



# HOSHIZAKI

## Parts List

Condensing Unit  
Serenity Series

Models  
SRK-14J/3



[hoshizaki.com](http://hoshizaki.com)

Number: 71343  
Issued: 8-19-2011  
Revised: 5-4-2016

## CONTENTS

Auxiliary Codes.....	3
A. Main Assembly and Refrigeration Circuit.....	4
B. Control Box Assembly.....	6
C. Accessories & Labels .....	7

## **Auxiliary Codes**

### **SRK-14J**

A-0 January 2011  
B-0 January 2012  
C-0 January 2013  
C-1 August 2013  
D-0 January 2014  
E-0 January 2015  
F-0 January 2016

### **SRK-14J3**

C-0 January 2013  
D-0 March 2014

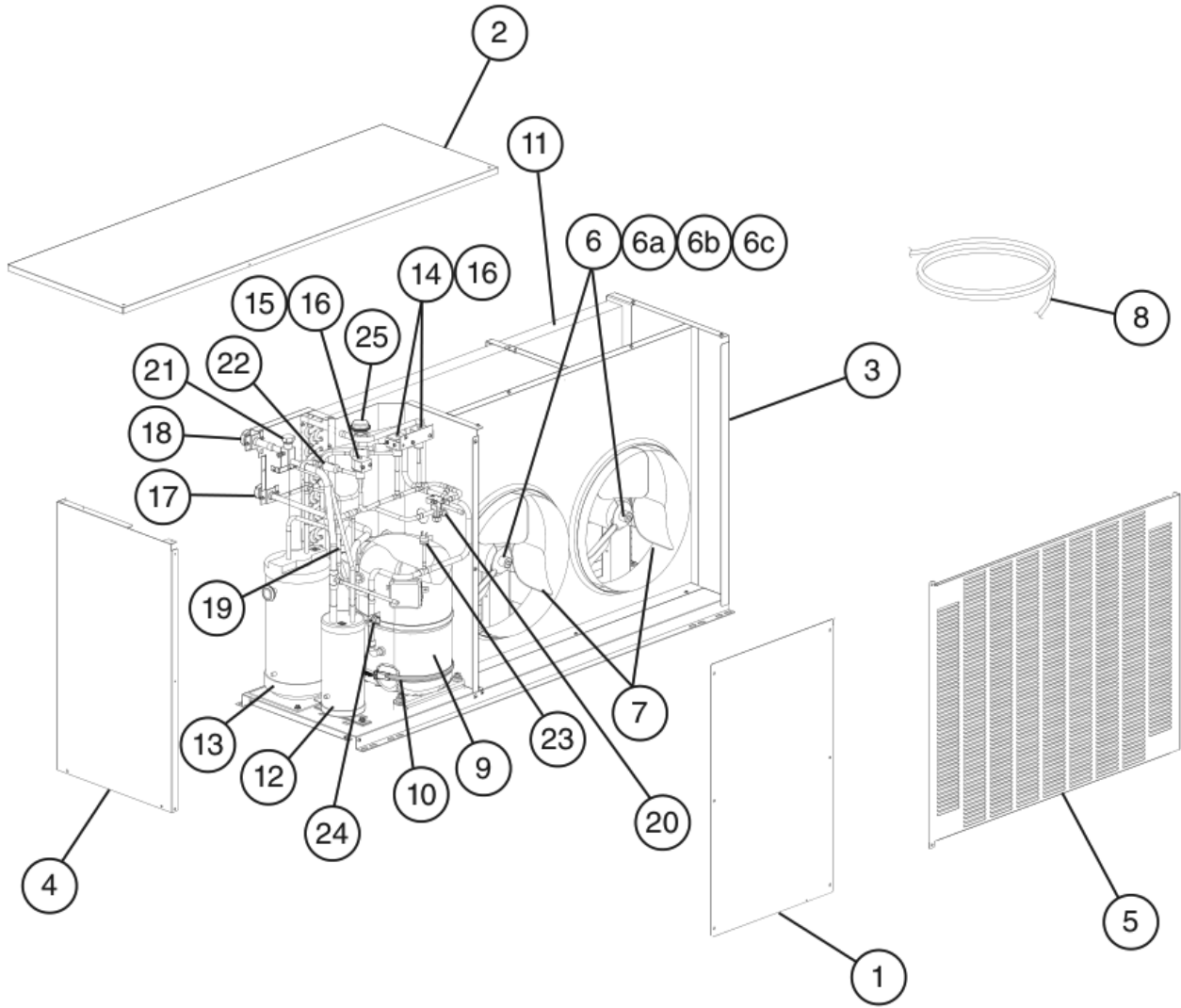
## **Auxiliary Code Breakdown**

The auxiliary code is the first two characters in the serial number. The first character indicates the year. Years progress or regress in alphabetical order. The series runs from "A" through "V" and the letters "I" and "O" are skipped. The second character indicates significant part changes within a year. Base is "0" and this number advances for each change. In cases where there is a letter in parentheses, this designates the month. This is the last character in the serial number. The series runs from "(A)" through "(M)" and the letter "(I)" is skipped. This designation is only included when identifying a parts change within an auxiliary code.

## **Note About Ordering Parts**

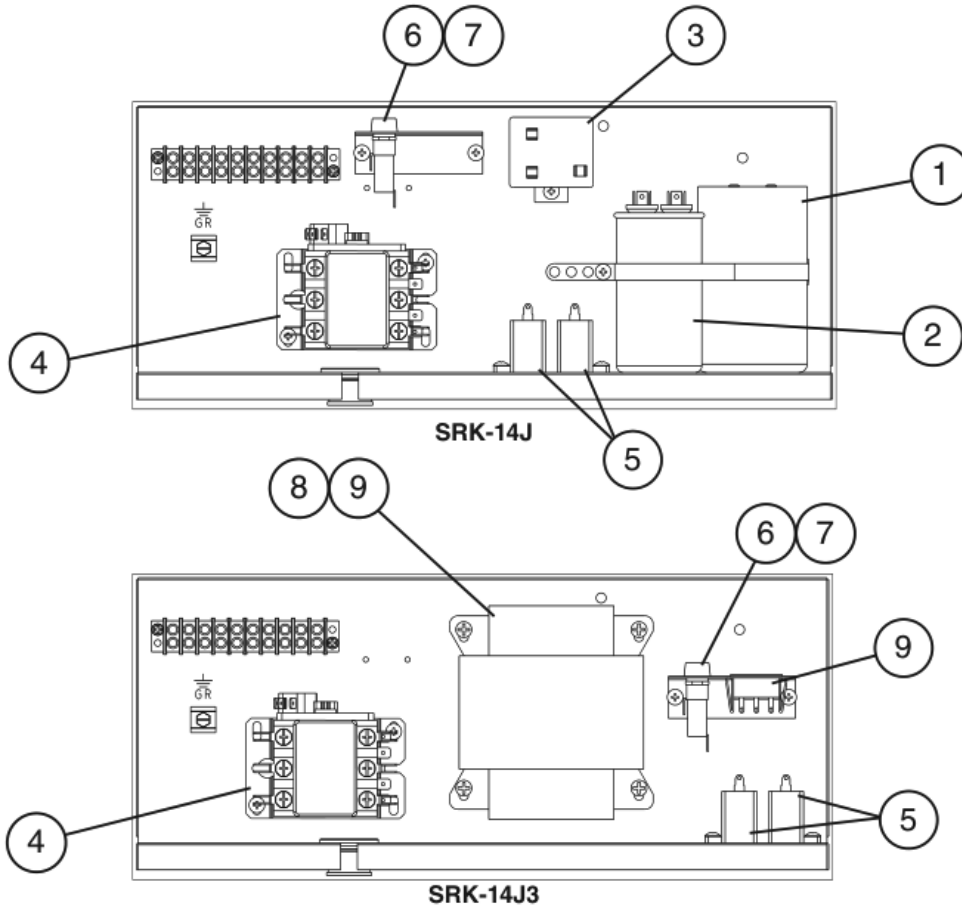
Most assemblies cannot be ordered as complete units; parts in the assemblies generally must be ordered separately.

**A. Main Assembly and Refrigeration Circuit**  
**SRK-14J, SRK-14J3**  
A-0 to F-0



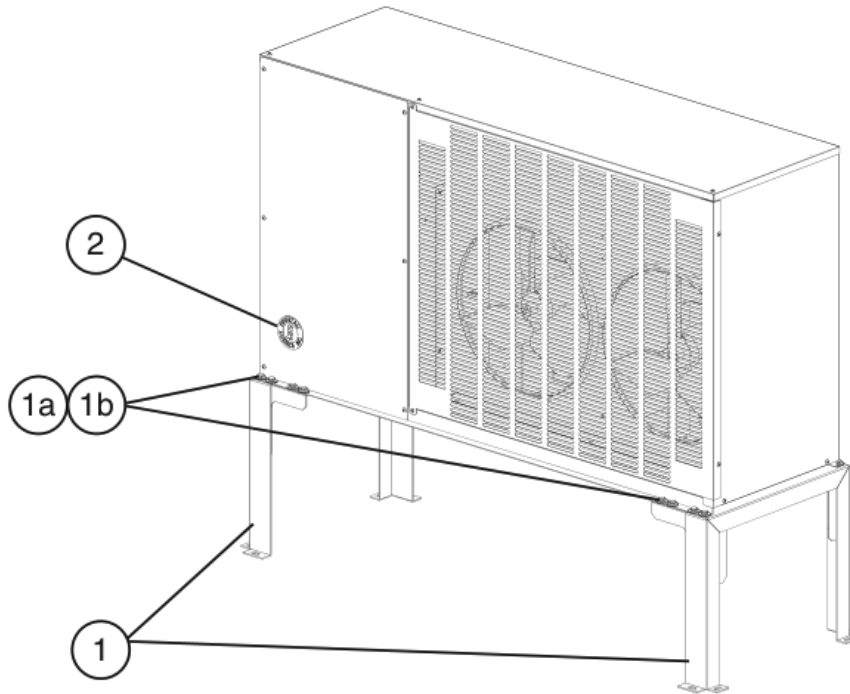
Title: A. Main Assembly and Refrigeration Circuit Model: SRK-14J, SRK-14J3												
Index No.	Description	Material or Model Number	Part Number	Required Number								
				A-0 to F-0								
<b>Main Assembly</b>												
1	Front Panel		<a href="#">3A3293-01</a>	1								
2	Top Panel		<a href="#">2A3242-01</a>	1								
3	Right Side Panel		<a href="#">3A3291-01</a>	1								
4	Left Side Panel		<a href="#">2A4981-01</a>	1								
5	Louver Panel		<a href="#">2A3241-01</a>	1								
6	Fan Motor		<a href="#">4A3201-01</a>	2								
6a	Split Lock Washer		<a href="#">7L2210832</a>	8								
6b	Flat Washer		<a href="#">7W2210832</a>	8								
6c	Hex Nut		<a href="#">7N0210832</a>	8								
7	Fan Blade		<a href="#">4A3614-01</a>	2								
8	Wire Harness		<a href="#">4A5657-02</a>	1								
<b>Refrigeration Circuit</b>												
9	Compressor	SRK-14J	<a href="#">4A4581-01</a>	1								
		SRK-14J3	<a href="#">4A4582-01</a>	1								
10	Crankcase Heater		<a href="#">4A5397-02</a>	1								
11	Condenser		<a href="#">1A0980-01</a>	1								
12	Accumulator		<a href="#">3A6803-01</a>	1								
13	Receiver		<a href="#">438209-01</a>	1								
14	Hot Gas Valve Body		<a href="#">4A3978-01</a>	2								
15	Liquid Line Valve Body		<a href="#">4A3276-01</a>	1								
16	Valve Coil		<a href="#">4A3277-01</a>	3								
17	Liquid Line Coupling		<a href="#">434072-01</a>	1								
18	Suction Line Coupling		<a href="#">4A3826-01</a>	1								
19	Check Valve		<a href="#">4A1373-01</a>	1								
20	Shutoff Valve		<a href="#">4A3491-01</a>	1								
21	Shutoff Valve		<a href="#">4A3490-01</a>	1								
22	Strainer		<a href="#">441569-02</a>	3								
23	High-Pressure Switch		<a href="#">463180-01</a>	1								
24	Discharge Line Thermostat		<a href="#">440664-01</a>	1								
25	Headmaster (C.P. R.)		<a href="#">4A0229-02</a>	1								

**B. Control Box Assembly**  
**SRK-14J, SRK-14J3**  
 A-0 to F-0



Title: B. Control Box Assembly Model: SRK-14J, SRK-14J3					Required Number								
Index No.	Description	Material or Model Number	Part Number	A-0 to F-0									
					1	Start Capacitor	<b>SRK-14J</b> 189-227MFD, 330VAC	<a href="#">3A0076-12</a>	1				
2	Run Capacitor	<b>SRK-14J</b> 35MFD, 440VAC	<a href="#">3A2005-12</a>	1									
3	Start Relay	<b>SRK-14J</b>	<a href="#">4A1107-09</a>	1									
4	Magnetic Contactor		<a href="#">4A0794-01</a>	1									
5	Fan Motor Capacitor	10MFD, 250VAC	<a href="#">443192-01</a>	2									
6	Fuse Holder		<a href="#">4A5443-01</a>	1									
7	Fuse	AGC-10A, 250VAC	<a href="#">4A0893-07</a>	1									
8	Main Transformer	<b>SRK-14J3</b>	<a href="#">4A5695-01</a>	1									
9	Voltage Tap Switch		<a href="#">4A1477-01</a>	1									

**C. Accessories & Labels**  
**SRK-14J, SRK-14J3**  
 A-0 to F-0



Title: C. Accessories & Labels Model: SRK-14J, SRK-14J3											
Index No.	Description	Material or Model Number	Part Number	Required Number							
				A-0 to C-0 (F)	C-0 (G) to F-0						
1	Leg		3A3716G01	2	2						
1a	Hex Head Bolt w/Washer	8x16, SS	7B0230816	16	-						
		8x20	7B0130820		16						
1b	Hex Nut		7N12-0800	16	-						
			7N11-0800		16						
2	Penguin Label		4A0526-01	1	1						