

# C1448, C1848, C2148 Service Parts

This part list contains the service parts for the air cooled, water cooled and remote air cooled C1448, C1848, C2148 ice machines.

To avoid costly and time consuming errors, double check the model and voltage before ordering a part.

The above have been manufactured in several voltages, which are designated by a voltage code after the hyphen (-) in the model number. Codes used included:

-32 = 208-230/60/1

-3 = 208-230/60/3

-6 = 230/50/1

-63 = 30/380-420/50/3

There was also a panel change in late 2009, denoted by a B at the end of the model number.

D series models began late 2014 and E began late 2017

Note: These abbreviations are used in this list:

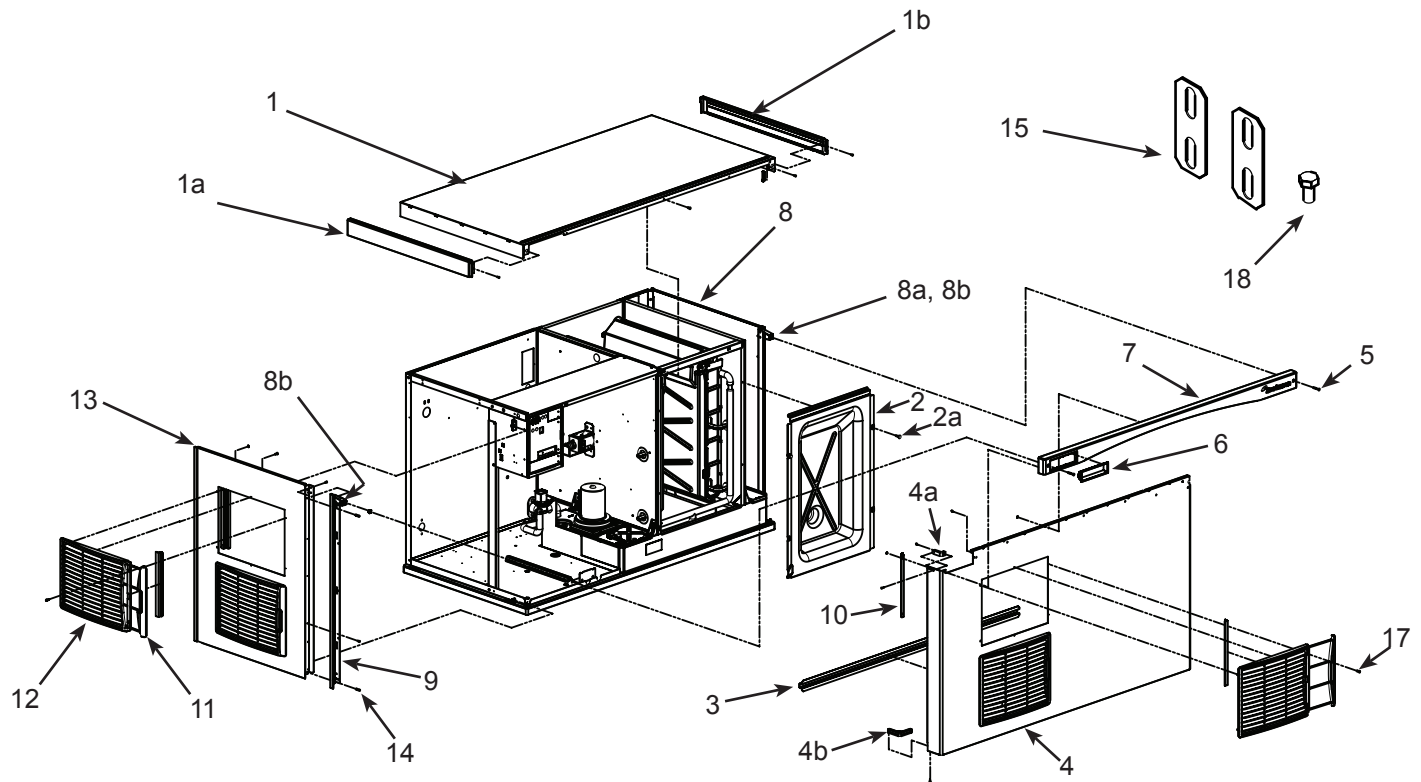
- AC = Air Cooled
- WC = Water Cooled
- RC = Remote Cooled
- HGV = Hot Gas Valve
- TXV = Thermostatic Expansion Valve
- Volt = Voltage
- Sol Vlv = Solenoid Valve
- Hdwe = Hardware


## Contents

Cabinet - A Series . . . . .	Page 2
Cabinet - B Series . . . . .	Page 3
Cabinet - D and E Series . . . . .	Page 4
Interior Parts . . . . .	Page 5
Evaporator Compartment . . . . .	Page 6
Air Cooled Refrigeration System . . . . .	Page 7
Air Cooled Fan Area . . . . .	Page 8
Water Cooled Refrigeration . . . . .	Page 9
Remote Refrigeration System . . . . .	Page 10
Electrical and Control Box, -3, -6, -32 . . . . .	Page 11
Electrical & Control Box, 400 volt, 50 Hz. 3 phase w/neutral (-63) . . . . .	Page 12
Compressors . . . . .	Page 13
Remote Condenser, ERC311 and ERC611 . . . . .	Page 14

# C1448, C1848, C2148 Service Parts

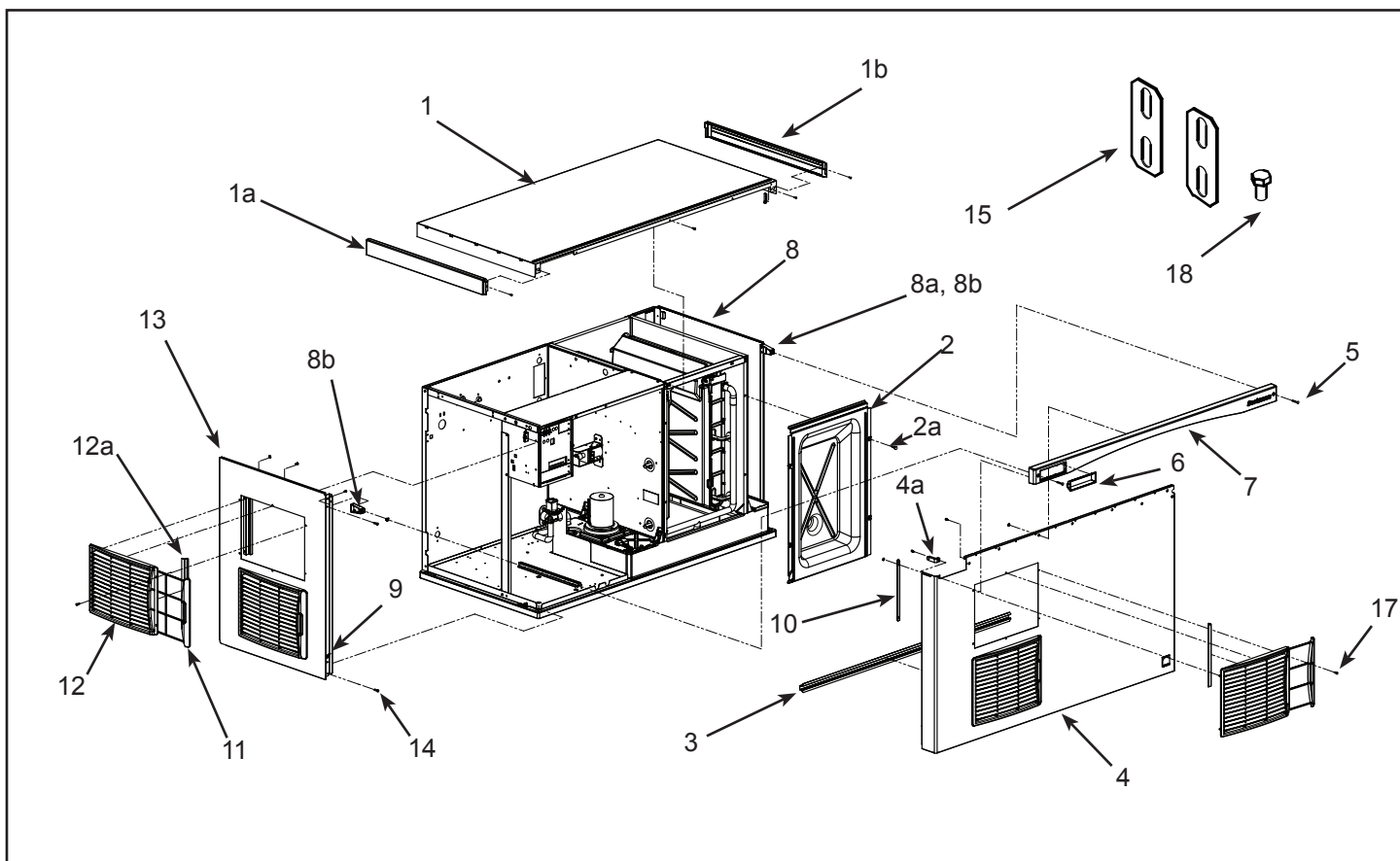
## Cabinet - A Series



Item Number	Part Number	Description	Item Number	Part Number	Description
1	A38941-023	Top panel, w/trim strips	8	A38553-022	Right side panel assy
1a	<a href="#">02-4221-01</a>	Left trim strip	8a	<a href="#">02-4215-01</a>	Receptacle
1b	<a href="#">02-4221-02</a>	Right trim strip	8b	<a href="#">03-3804-01</a>	Screw receptacle
2	<a href="#">02-4184-01</a>	Evaporator cover	9	<a href="#">02-4067-03</a>	Side panel support. Fits water cooled and remote models. Used as back side panel support for air cooled.
2a	<a href="#">03-0727-05</a>	Screw		<a href="#">02-4067-04</a>	Front side panel support for air cooled models
3	A39045-001	Front panel stiffener	10	A39222-001	Filter guide 
4	A38552-025	AC Front panel assembly, includes filters, trim strip, gussets and labels.	11	<a href="#">02-4212-01</a>	Air filter
	A38552-024	WC, or RC front panel assembly, includes trim strip, gussets and labels	12	<a href="#">02-4224-01</a>	Louver panel
4a	<a href="#">02-4216-01</a>	Top gusset	12a	A39238-001	Louver bracket
4b	<a href="#">02-4217-01</a>	Bottom gusset	13	A38551-023	Left side panel, AC
5	<a href="#">03-1735-03</a>	Screw, front panel		A38551-024	Left side panel WC, RC
6	<a href="#">02-4284-01</a>	Bezel, full window	14	<a href="#">03-1404-12</a>	Screw
6a	<a href="#">02-4284-02</a>	Bezel, partial window	15	A30911-015	Machine straps
7	<a href="#">02-4214-03</a>	Trim strip	16	<a href="#">16-0355-00</a>	Inlet water fitting, flare
			17	<a href="#">03-1419-17</a>	Flat head screw
			18	<a href="#">03-1405-15</a>	Screw

# C1448, C1848, C2148 Service Parts

## Cabinet - B Series



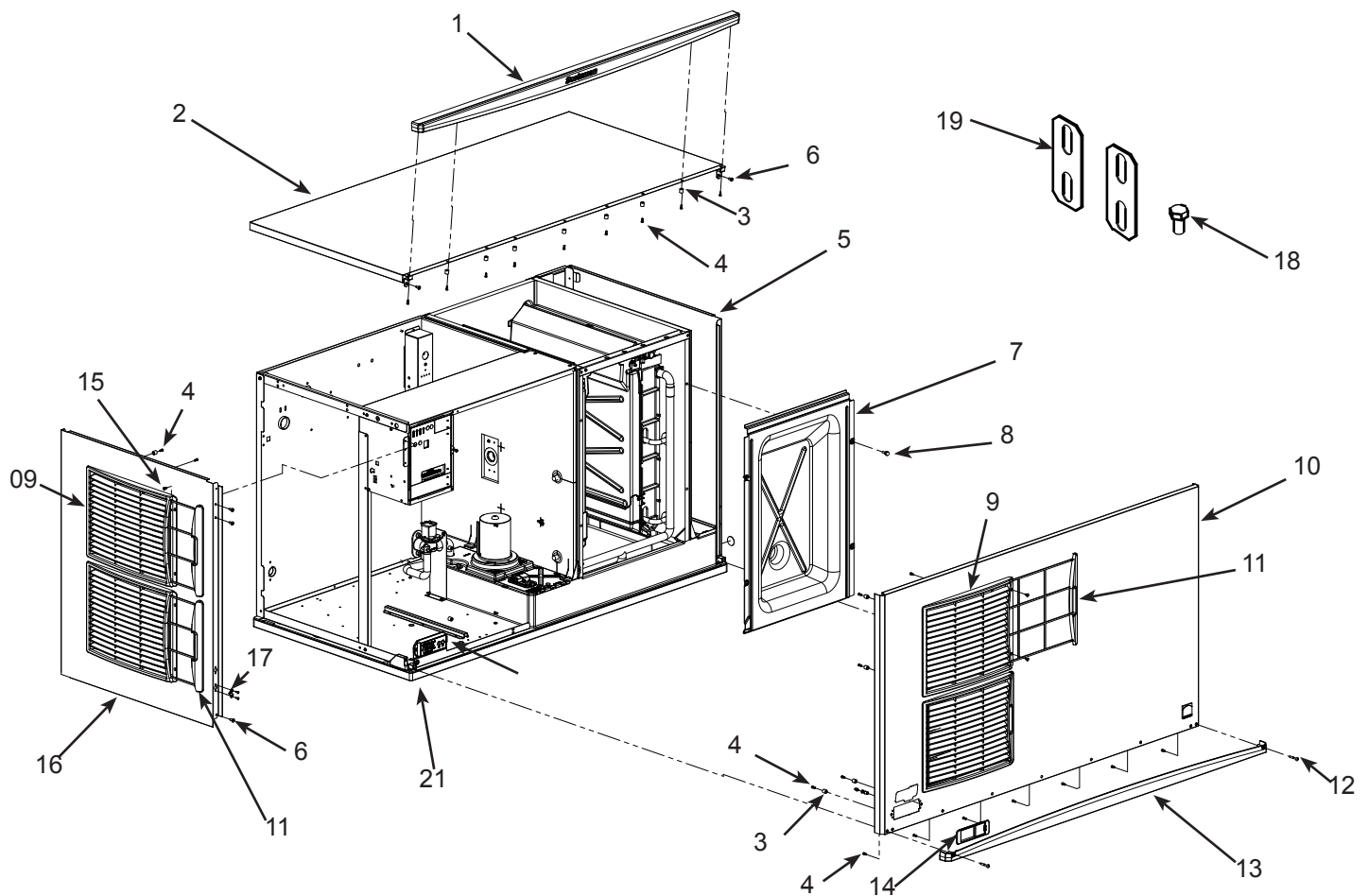
Item Number	Part Number	Description	Item Number	Part Number	Description
1	A39579-023	Top panel	8b	<a href="#">03-3804-01</a>	Screw receptacle
1a	<a href="#">02-4221-01</a>	Left trim strip*	9	A39571-001	Panel clip
1b	<a href="#">02-4221-02</a>	Right trim strip*	10	A39238-001	Filter guide
2	<a href="#">02-4184-01</a>	Evaporator cover	11	<a href="#">02-4212-01</a>	Air filter
2a	<a href="#">03-0727-05</a>	Screw	12	<a href="#">02-4224-01</a>	Louver panel
3	A39045-001	Front panel stiffener	12a	A39238-001	Louver bracket
4	A39578-025	AC Front panel assembly, includes filters, trim strip	13	A39580-026	Left side panel, AC
	A39578-024	WC, or RC front panel assembly, includes trim strip		A39580-024	Left side panel, WC, RC
4a	<a href="#">02-4216-01</a>	Top gusset	14	<a href="#">03-1404-12</a>	Screw
5	<a href="#">03-1735-03</a>	Screw, front panel	15	A30911-015	Machine straps
6	<a href="#">02-4284-01</a>	Bezel, full window	16	<a href="#">16-0355-00</a>	Inlet water fitting, flare**
6a	<a href="#">02-4284-02</a>	Bezel, partial window**	17	<a href="#">03-1419-17</a>	Flat head screw
7	<a href="#">02-4214-03</a>	Trim strip	18	<a href="#">03-1405-15</a>	Screw
8	A39581-022	Right side panel assy			
8a	<a href="#">02-4215-01</a>	Receptacle			

\* Side trim strips discontinued mid 2011

\*\* Bezel and fitting discontinued 2/8/2012.

# C1448, C1848, C2148 Service Parts

## Cabinet - D and E Series

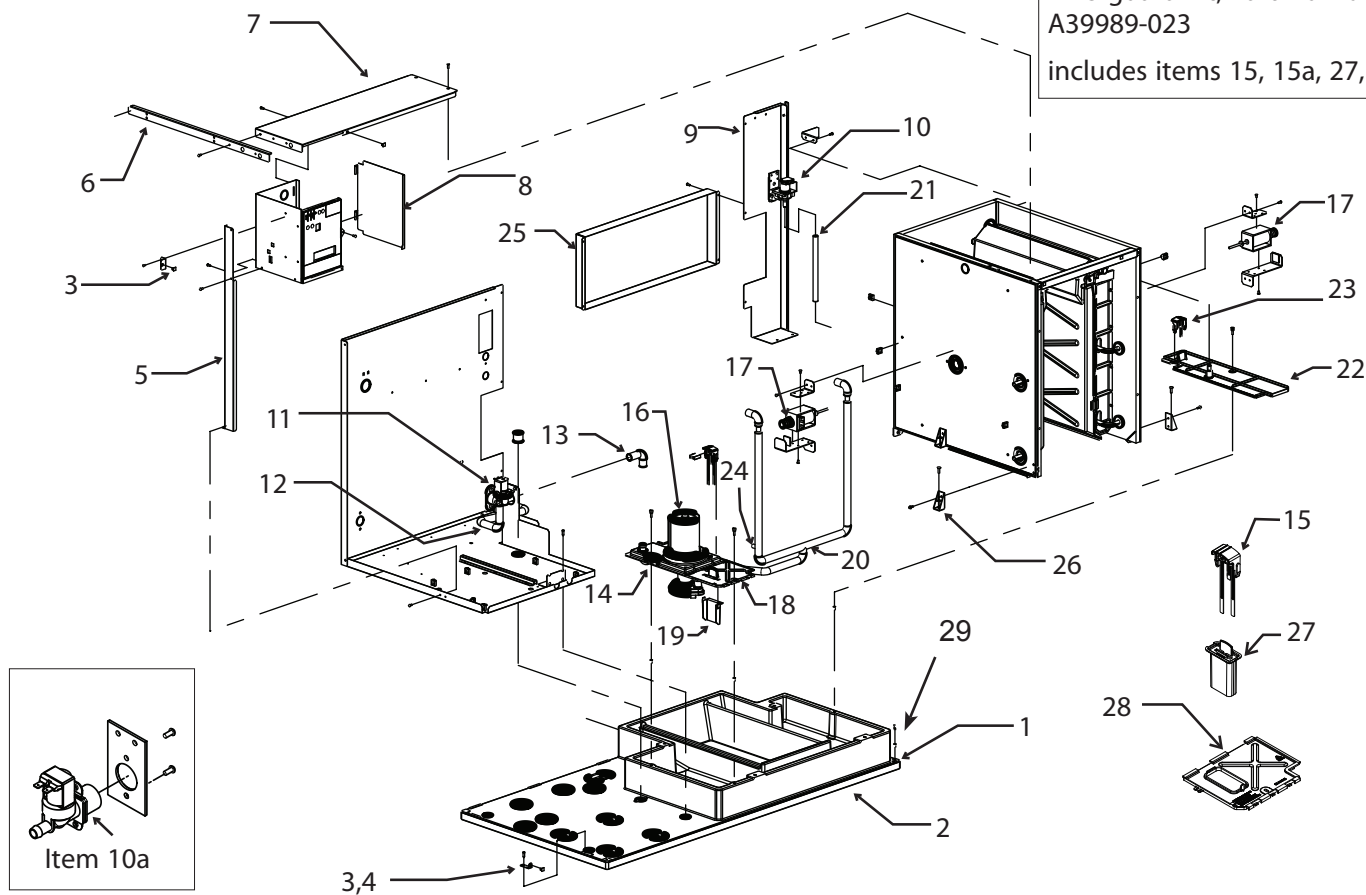


Item Number	Part Number	Description	Item Number	Part Number	Description
1	<a href="#">02-4819-03</a>	Trim strip	14	<a href="#">02-4821-02</a>	Bezel with standard door
2	A40309-023	Top panel	14a	<a href="#">02-4822-02</a>	Bezel with secure door
3	<a href="#">02-4824-01</a>	Spacer	15	<a href="#">03-1419-26</a>	Screw
4	<a href="#">03-3836-02</a>	Screw	16	A40310-028	Left side panel, AC
5	A40311-022	Right side panel		A40310-022	Left side panel WC, RC
6	<a href="#">03-1404-10</a>	Screw	17	<a href="#">03-1733-04</a>	Ball stud Receptacle
7	<a href="#">02-4184-01</a>	Inner front panel	18	<a href="#">03-1405-15</a>	Screw
8	<a href="#">03-0727-05</a>	Thumbscrew	19	A30911-015	Machine straps
9	<a href="#">02-4224-03</a>	Louvers	20	<a href="#">11-0622-21</a>	Light & switch panel D series
10	A40308-030	AC Front panel assembly, includes filters, trim strip, gussets and labels.	21		See page 5 items 29,29a &29b
	A40308-031	WC, or RC front panel assembly, includes trim strip, gussets and labels			
11	<a href="#">02-4212-03</a>	Filters			
12	<a href="#">03-1735-03</a>	Screw			
13	<a href="#">02-4820-03</a>	Trim strip bottom			

# C1448, C1848, C2148 Service Parts

## Interior Parts

WLS guard kit, Part Number  
A39989-023  
includes items 15, 15a, 27, 28

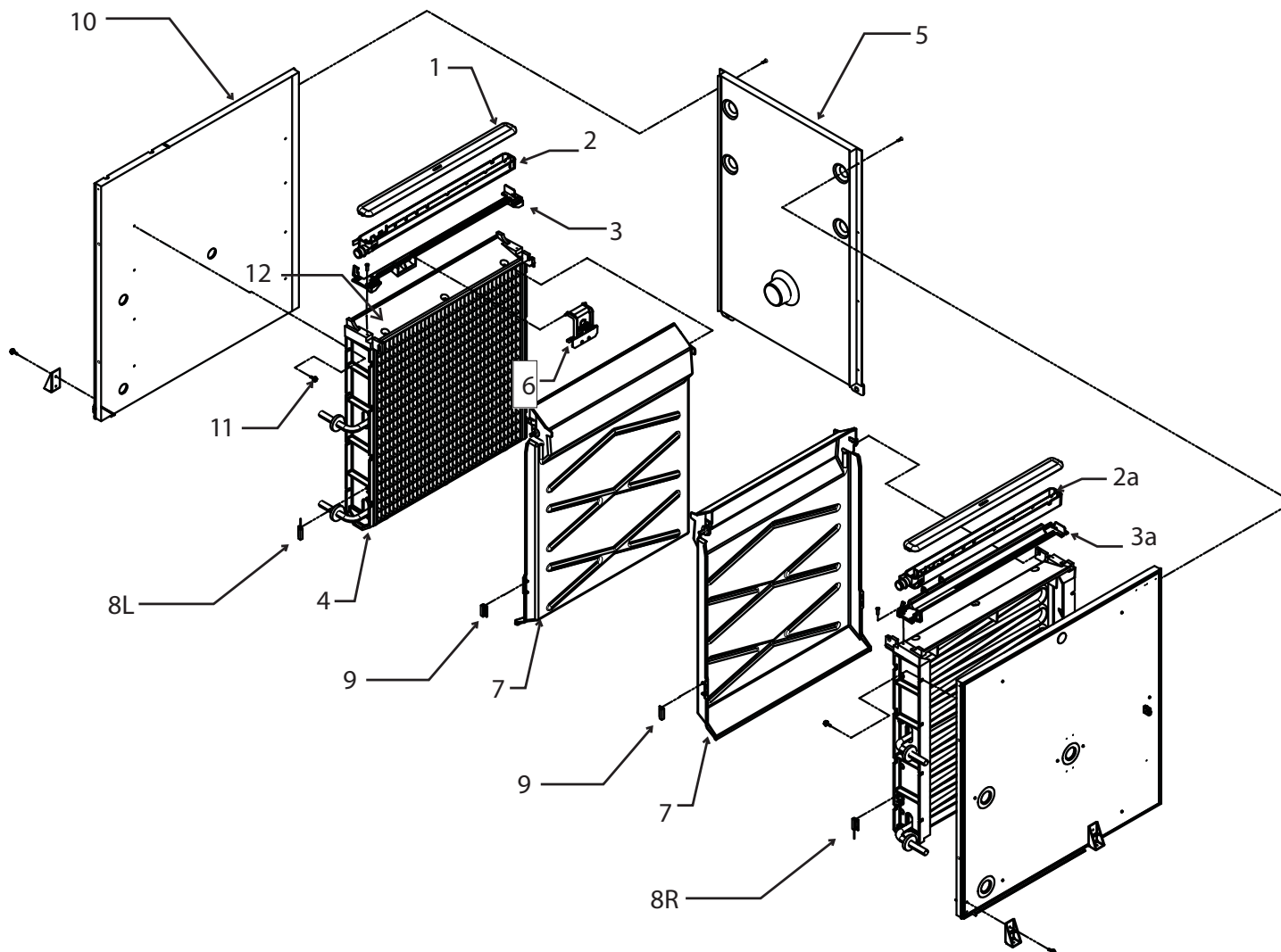


Item Number	Part Number	Description	Item Number	Part Number	Description
1	<a href="#">15-0411-00</a>	Strike - A series only	15a	WLS harness, see page 10	
2	no number	Base, insulated	16	<a href="#">12-2920-22</a>	Water pump - 60 Hz
3	<a href="#">03-3804-01</a>	Receptacle		<a href="#">12-2920-26</a>	Water pump - 50 Hz
4	A38732-001	Side panel mount	17	<a href="#">12-3060-22</a>	Harvest assist solenoid
5	A38629-001	Strut	18	<a href="#">02-4178-01</a>	Reservoir cover (prior)
6	A38582-001	Brace	19	<a href="#">02-4332-01</a>	Sensor cover (prior)
7	A39281-001	Control box top	20	<a href="#">02-4182-01</a>	Pump hose
8	A38537-001	Control box side	21	<a href="#">13-0674-02</a>	Fill hose order by ft (18")
9	A38680-001	Right back panel		<a href="#">15-0821-01</a>	Fill hose, -6 CE models
10	<a href="#">12-2922-02</a>	Inlet water sol vlv, 230 volt	22	<a href="#">02-4175-01</a>	Rt side res cover
	<a href="#">12-2912-01</a>	Water valve rebuild kit	23	A39030-022	Level sensor, discontinued
10a	<a href="#">11-0568-02</a>	Inlet water sol vlv, CE mod	24	<a href="#">11-0572-21</a>	Temp probe assy
11	<a href="#">11-0564-02</a>	Purge valve, 230 volt	25	A38681-001	Chase cover
12	A38862-002	Drain tube	26	<a href="#">02-4152-01</a>	Gusset
13	A38862-001	Drain hose	27	<a href="#">02-4646-01</a>	WLS guard, use/w item 28
14	<a href="#">02-4177-01</a>	Water pump bracket	28	<a href="#">02-4649-01</a>	Sump cover, use/w item 27
15	A39030-021	Water level sensor	29	<a href="#">02-4823-21</a>	*Panel mount kit, left
			29a	<a href="#">02-4823-22</a>	*Panel mount kit, right

\*Includes both screw receptacles

# C1448, C1848, C2148 Service Parts

## Evaporator Compartment



Item Number	Part Number	Description
1	<a href="#">02-4065-01</a>	Water distributor cover
2	<a href="#">02-4064-01</a>	Water distributor, left
2a	<a href="#">02-4064-02</a>	Water distributor, right
3	<a href="#">02-4205-01</a>	Mounting bracket, left
3a	<a href="#">02-4205-02</a>	Mounting bracket, right
4	see table	Evaporator

6	A39031-021	Ice thickness sensor
7	<a href="#">02-4611-21</a>	Curtain
8L	<a href="#">11-0563-06</a>	Curtain switch, left
8R	<a href="#">11-0563-03</a>	Curtain switch, right
9	<a href="#">11-0563-02</a>	Curtain switch magnet*
10	<a href="#">13-0943-01</a>	Gasket tape
11	<a href="#">03-3868-01</a>	Screw
12	<a href="#">02-4156-21</a>	Spillway replacement kit

\* Magnet included in replacement curtain [02-4611-21](#)

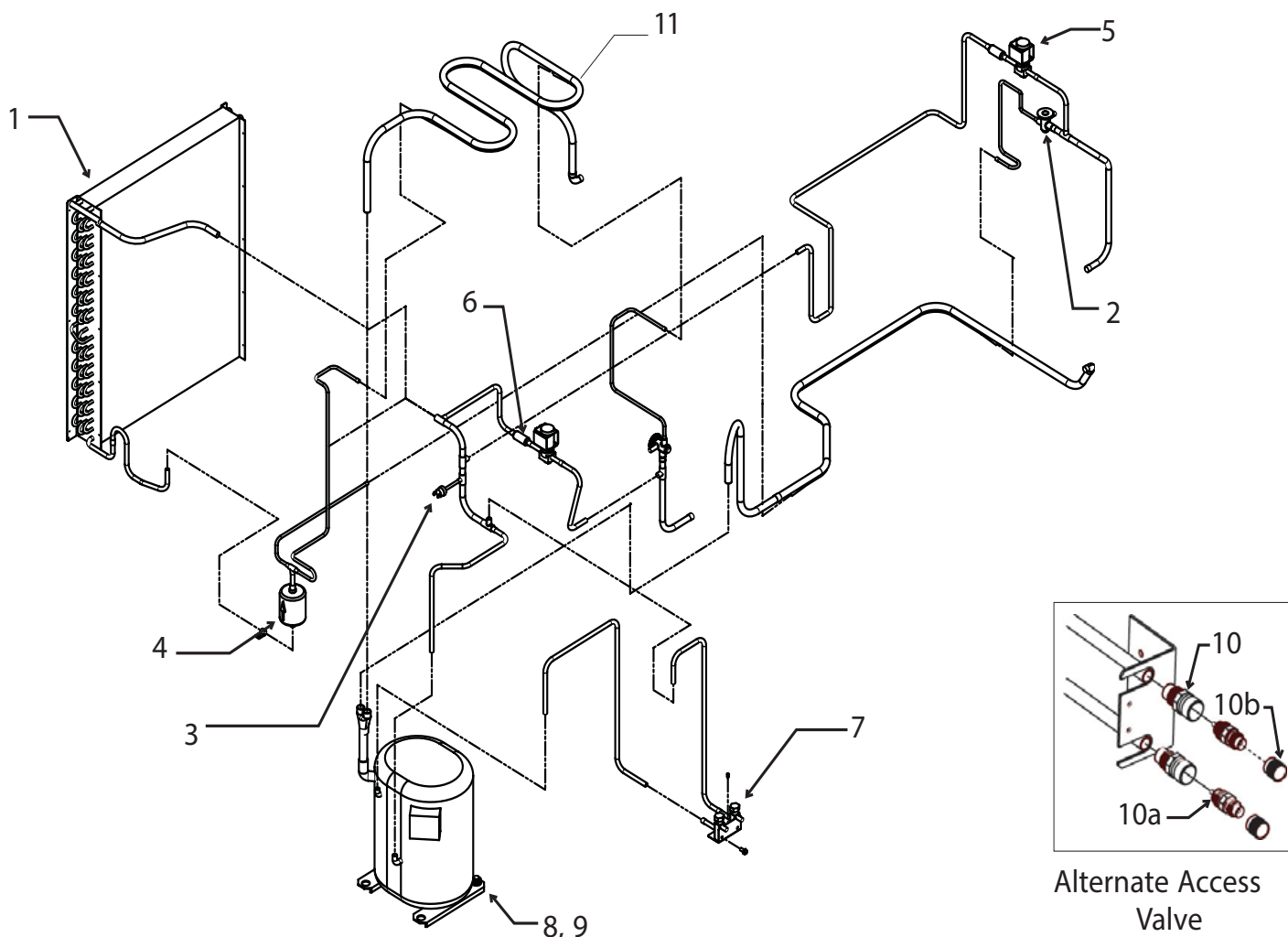
	small cube	medium cube
Right	A38628-023	A38628-024
Left	A38628-021	A38628-022

5 A38677-001 Back wall



# C1448, C1848, C2148 Service Parts

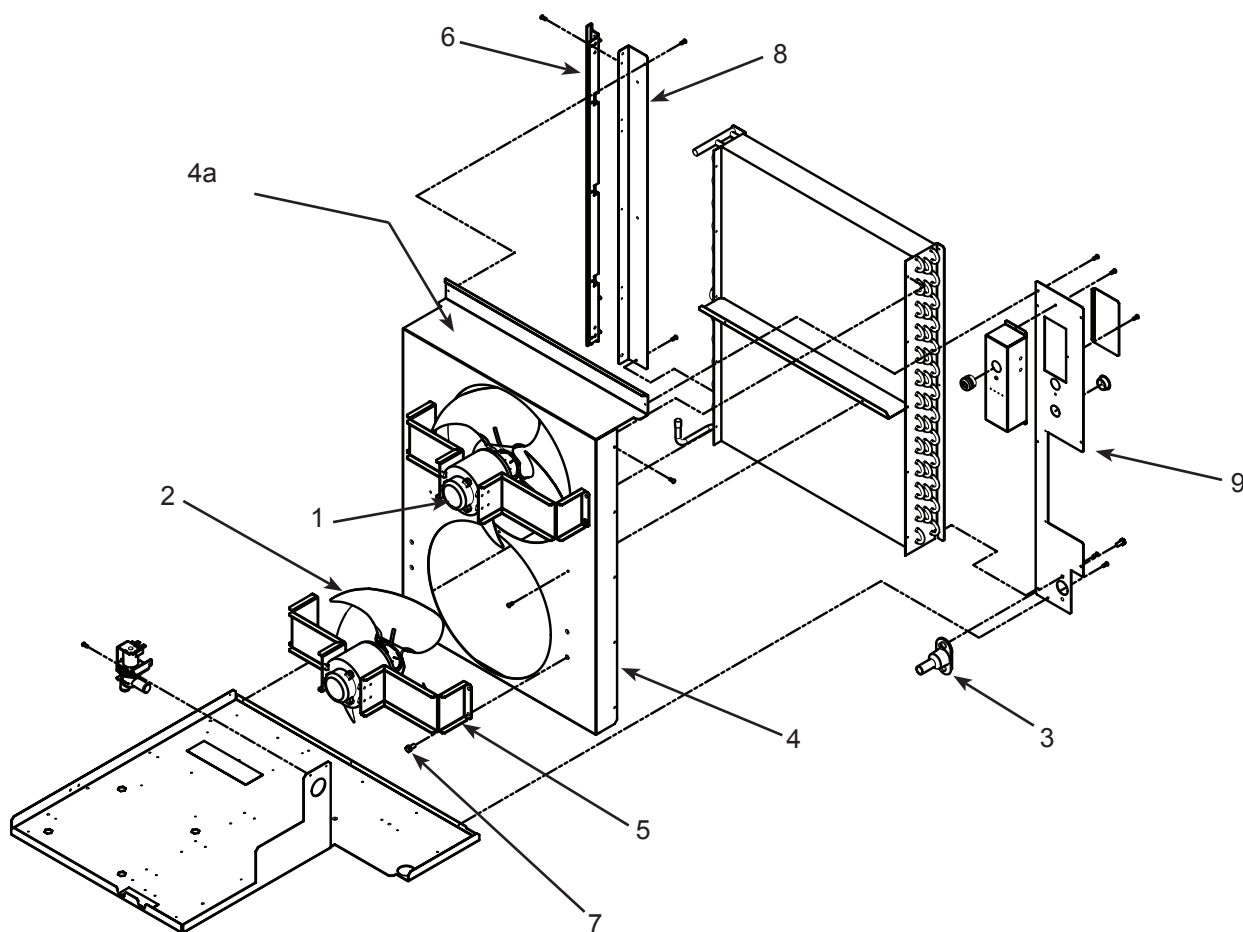
## Air Cooled Refrigeration System



Item Number	Part Number	Description	Alternate Access Valve, use began 4/08		
1	<a href="#">18-8892-01</a>	Condenser, AC	10	<a href="#">16-1137-01</a>	Valve body
2	<a href="#">16-1130-01</a>	TXV	10a	<a href="#">16-1139-01</a>	Core
	<a href="#">19-0599-06</a>	Insulation Danfoss TXV	10b	<a href="#">16-1140-01</a>	Cap
3	<a href="#">11-0566-22</a>	Fan cycle pressure sw.	11	A38736-001	Left suction line heat ex
4	<a href="#">02-3319-02</a>	Dryer			
5	<a href="#">11-0493-01</a>	Hot gas valve, 230 volt			
	<a href="#">12-2719-22</a>	230 volt coil			
	<a href="#">12-2733-30</a>	HGV rebuild kit			
6	<a href="#">16-1063-01</a>	Strainer			
7	<a href="#">16-0832-20</a>	Access valve			
	<a href="#">16-0832-03</a>	Port cap			
	<a href="#">16-0832-02</a>	Stem cap			
8	see page 10	Compressors			
9	see page 10	Compressor mounting hdw			

# C1448, C1848, C2148 Service Parts

## Air Cooled Fan Area

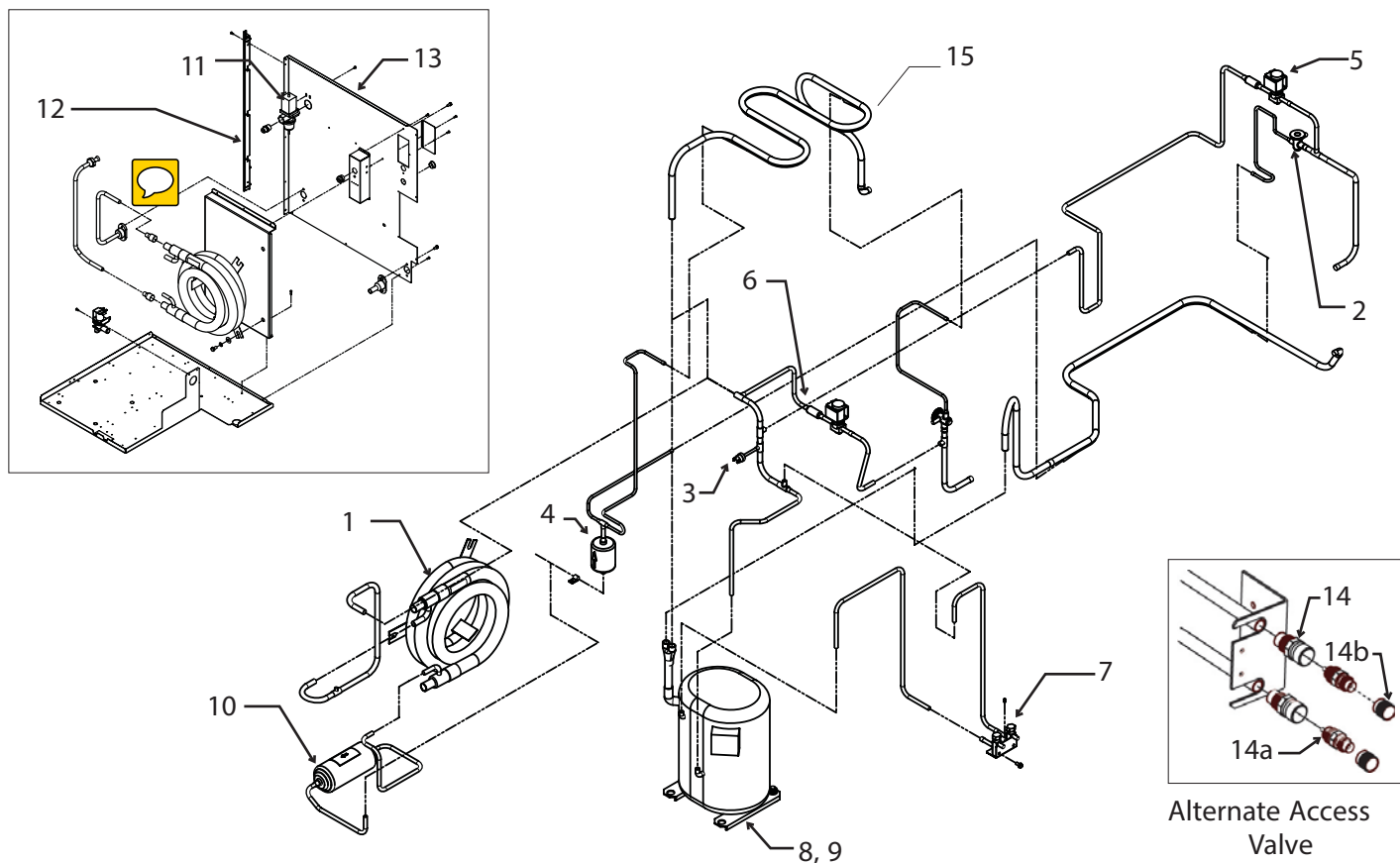


Item Number	Part Number	Description
1	<a href="#">18-8927-01</a>	Fan motor All but C1848 E
1a	<a href="#">18-8927-02</a>	C1848 E Fan motor
2	<a href="#">18-8882-01</a>	Fan blade
3	<a href="#">02-3692-21</a>	Drain adapter - also for WC and RC
4	A38682-001	Fan shroud - A Series
	A39630-001	Fan shroud - B- E Series
4a	A39631-001	Fan shroud top - B - E series only
5	A38554-001	Fan motor bracket
6	<a href="#">02-4067-04</a>	Side panel support - AC
7	<a href="#">03-1645-01</a>	Screw
8	A38741-001	AC bracket - A Series
	A39590-001	AC bracket - B and E Series
9	A38797-001	Back panel, AC only



# C1448, C1848, C2148 Service Parts

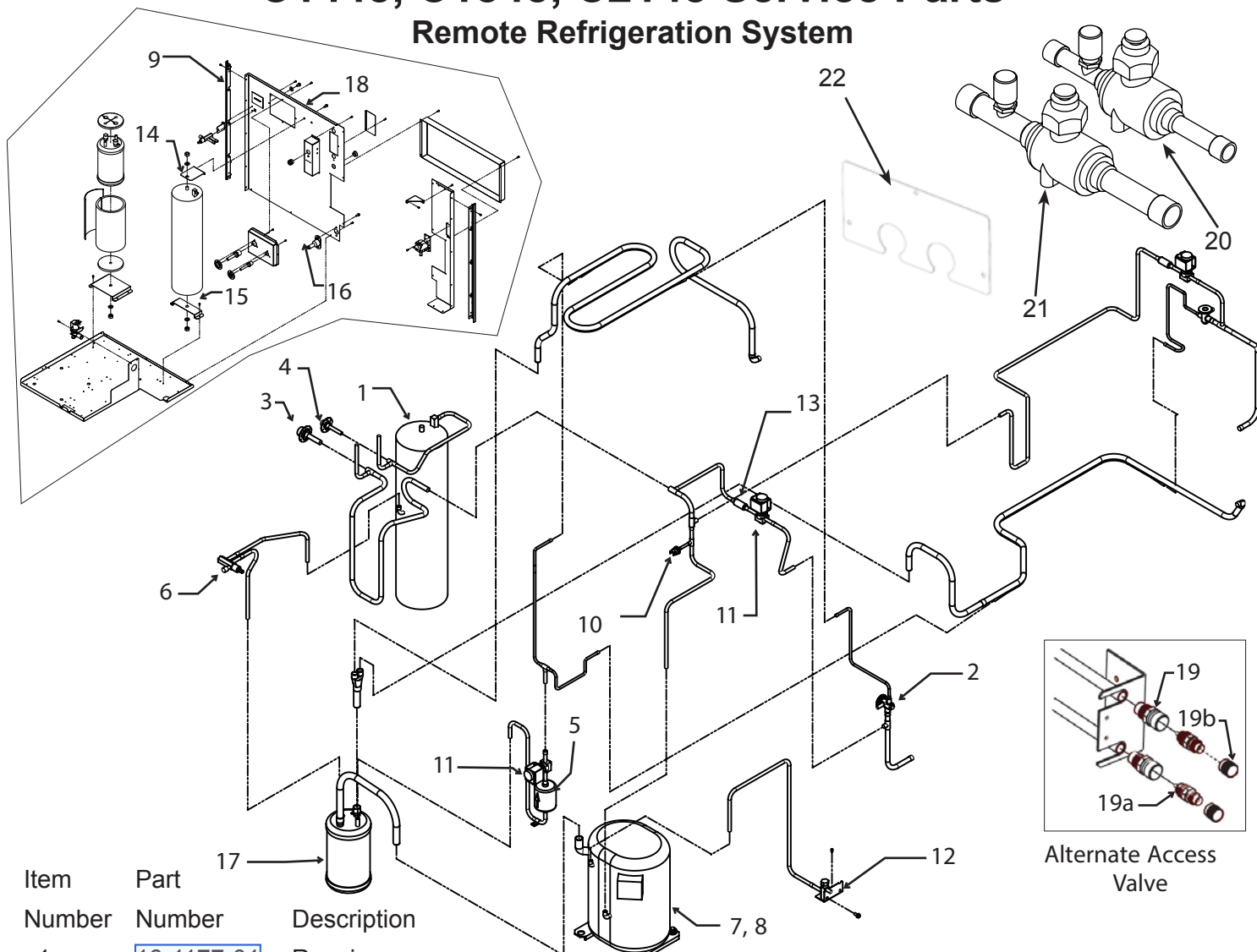
## Water Cooled Refrigeration



Item Number	Part Number	Description	Item Number	Part Number	Description
1	<a href="#">18-8865-01</a>	Condenser, WC C1448. C1848	8	see page 10	Compressors
	<a href="#">18-8931-21</a>	Condenser, WC C2148	9	see page 10	Compressor mounting hdw
2	<a href="#">16-1130-01</a>	TXV	10	<a href="#">02-2628-02</a>	Receiver
	<a href="#">19-0599-06</a>	Insulation for TXV	11	<a href="#">11-0608-21</a>	Water regulating valve, C1448W, C1848W
3	<a href="#">11-0501-21</a>	High pressure sw.		<a href="#">11-0478-02</a>	Water regulating valve C2148W
4	<a href="#">02-3319-02</a>	Dryer	12	<a href="#">02-4067-03</a>	Side support
5	<a href="#">11-0493-01</a>	Hot gas valve, 230 volt	13	A38606-001	Back panel, WC - A series
	<a href="#">12-2719-22</a>	230 volt coil		A39574-001	Back panel, WC - B - D series
	<a href="#">12-2733-30</a>	HGV rebuild kit		A40629-001	Back panel, WC - E series
6	<a href="#">16-1063-01</a>	Strainer		A40654-001	Back cover, WC - E series
7	<a href="#">16-1137-01</a>	Valve body	Prior Access Valve, up to 4/08		
7a	<a href="#">16-1139-01</a>	Core		<a href="#">16-0832-20</a>	Access valve
7b	<a href="#">16-1140-01</a>	Cap		<a href="#">16-0832-03</a>	Port cap
				<a href="#">16-0832-02</a>	Stem cap
			15	A38736-001	Left suction line heat ex

# C1448, C1848, C2148 Service Parts

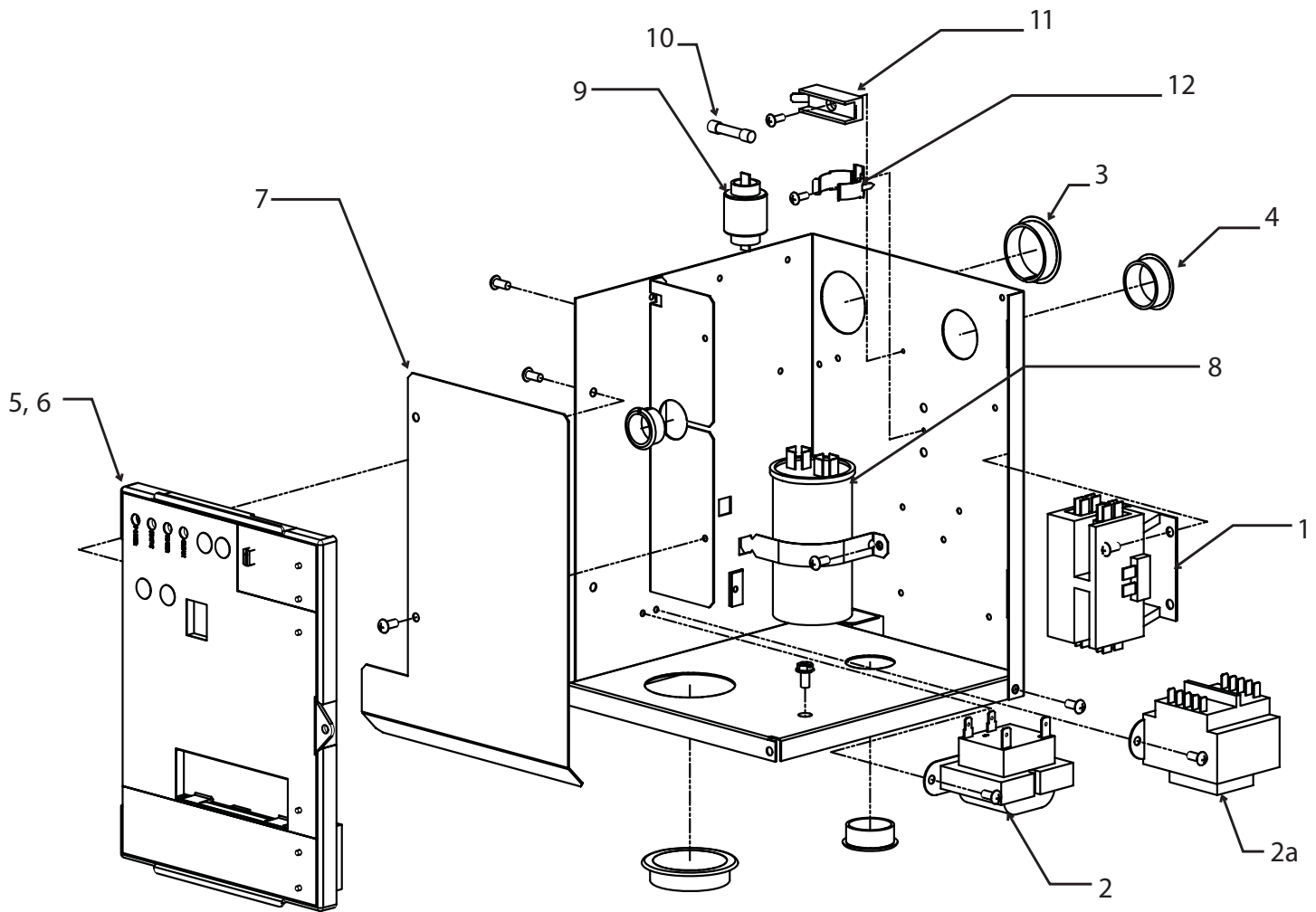
## Remote Refrigeration System



Item Number	Part Number	Description
1	<a href="#">16-1177-01</a>	Receiver
2	<a href="#">16-1130-01</a>	TXV
	<a href="#">19-0599-06</a>	insulation Danfoss TXV
3	<a href="#">16-0850-01</a>	Discharge quick connect
4	<a href="#">16-0850-03</a>	Liquid quick connect
5	<a href="#">02-3319-02</a>	Drier
6	<a href="#">16-1030-01</a>	Liquid line access valve
7	see page 10	Compressors
8	see page 10	Compressor mounting hdw
8a	see page 10	Crankcase heater
9	<a href="#">02-4067-03</a>	Side panel support,
10	<a href="#">11-0501-22</a>	High pressure cut out
11	<a href="#">11-0493-01</a>	Liquid line valve or HGV, 230 v
12	<a href="#">16-1137-01</a>	Valve body
	<a href="#">16-1139-01</a>	Core
	<a href="#">16-1140-01</a>	Cap
13	<a href="#">16-1063-01</a>	Strainer
14	<a href="#">A37211-001</a>	Top receiver bracket
15	<a href="#">A37212-001</a>	Bottom receiver bracket
16	<a href="#">02-3692-21</a>	Drain adapter
17	<a href="#">16-1122-21</a>	Accumulator, kit w/insul
18	<a href="#">A38679-001</a>	Back panel, rem - A series
	<a href="#">A39574-001</a>	Back panel, rem - B series
	<a href="#">A40629-001</a>	Back panel, rem - E series
*Prior Access Valve, up to 4/08		
19*	<a href="#">16-0832-20</a>	Access valve
19a*	<a href="#">16-0832-03</a>	Port cap
19b*	<a href="#">16-0832-02</a>	Stem cap
20	<a href="#">16-1208-01</a>	3/8 Isolation valve - E series
21	<a href="#">16-1208-02</a>	1/2 Isolation valve - E series
21a	<a href="#">A40507-001</a>	Isolation valve bracket - E series
22	<a href="#">A40508-001</a>	Fittings cover rem - E series

# C1448, C1848, C2148 Service Parts

## Electrical and Control Box, -3, -6, -32



Item Number	Part Number	Description
1	<a href="#">12-2469-02</a>	Contactor, 230, single ph
	<a href="#">12-2533-02</a>	Contactor, three phase
2	<a href="#">12-2924-02</a>	Transformer, 230 volt
2a	<a href="#">12-2639-01</a>	Transformer, 50 Hz
3	<a href="#">12-1213-11</a>	Snap bushing
4	<a href="#">12-1213-15</a>	Snap bushing
5	<a href="#">11-0621-21</a>	Service controller, fits all

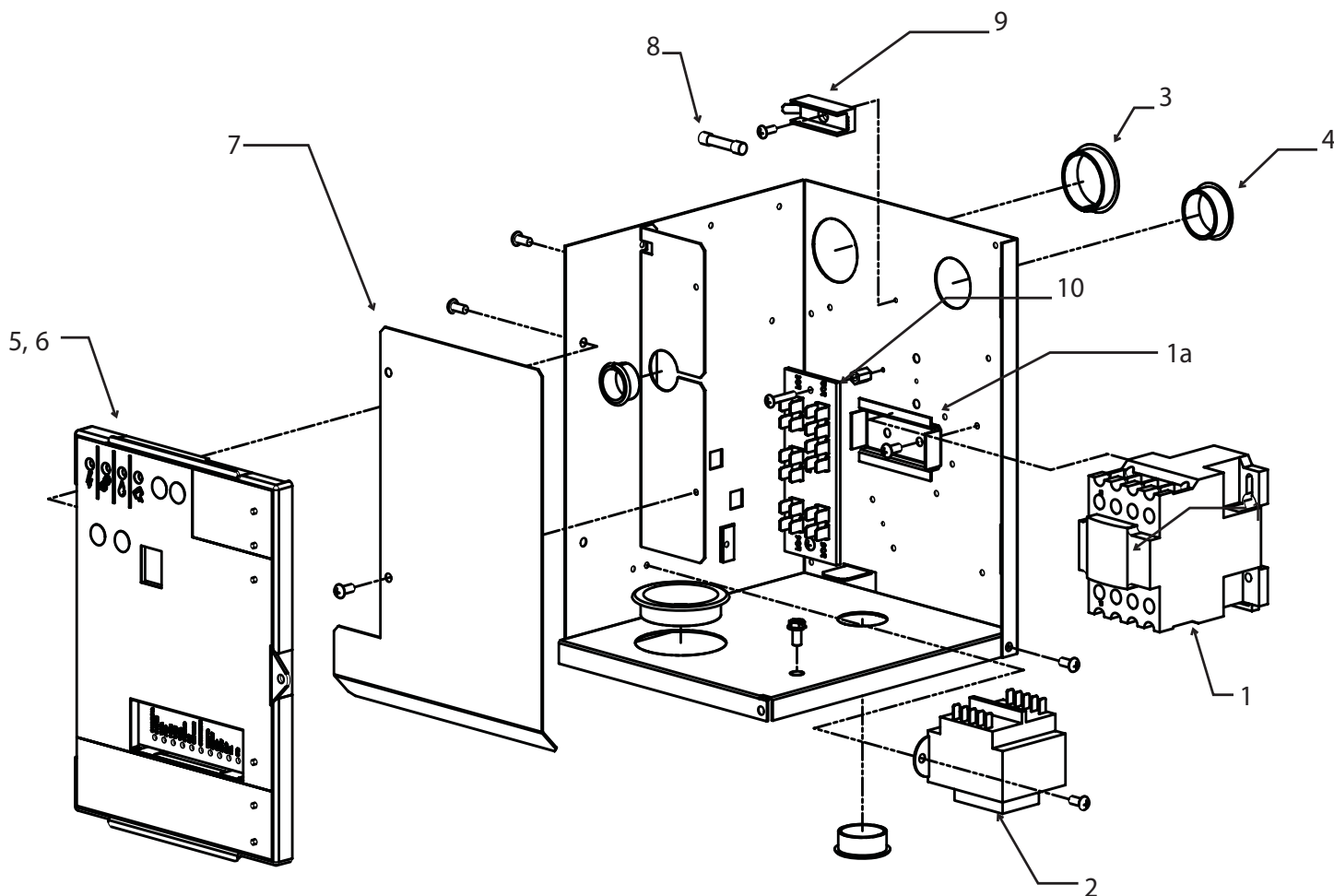
### Prodigy cubers

6	<a href="#">02-4076-01</a>	Control box door
	<a href="#">02-4189-01</a>	Overlay label
7	A39216-001	Barrier
8	see next page Run capacitor	
9	see next page PTCR -	

10	<a href="#">12-2686-01</a>	Fuse, 50 Hz only
11	<a href="#">12-2687-01</a>	Fuse holder
12	<a href="#">18-8840-02</a>	Bracket
Wiring Harnesses (not illustrated)		
13	<a href="#">12-2931-01</a>	Power harness, A & W
	<a href="#">12-2931-02</a>	Power harness, Remote
Power harness connects to J1 on controller		
14	<a href="#">12-2937-01</a>	Hi voltage harness, A & W
	<a href="#">12-2938-01</a>	Hi voltage harness, Rem
	<a href="#">12-2944-01</a>	Hi voltage, 50 Hz A & W
	<a href="#">12-2944-02</a>	Hi voltage, 50 Hz, Rem
Hi voltage harness has the 8 pin connector		
15	<a href="#">12-2928-01</a>	Water level sensor harness
for one 3 probe sensor. Second sensor discontinued.		
16	<a href="#">11-0622-21</a>	Light & switch panel D,E series

# C1448, C1848, C2148 Service Parts

## Electrical & Control Box, 400 volt, 50 Hz. 3 phase w/neutral (-63)



Item Number	Part Number	Description
1	<a href="#">12-3010-03</a>	Contactor, 400 v 3 ph.
1a	A39511-001	Bracket
2	<a href="#">12-2639-01</a>	Transformer, 50 Hz
3	<a href="#">12-1213-11</a>	Snap bushing
4	<a href="#">12-1213-15</a>	Snap bushing
5	<a href="#">11-0621-21</a>	Service controller, fits all Prodigy cubers
6	<a href="#">02-4076-01</a>	Control box door
	<a href="#">02-4189-01</a>	Overlay label
7	A39216-001	Barrier
8	<a href="#">12-2686-01</a>	Fuse, 50 Hz only
9	<a href="#">12-2687-01</a>	Fuse holder
10	A25981-001	Terminal board

### Wiring Harnesses (not illustrated)

11	<a href="#">12-3066-02</a>	Hi voltage, 50 Hz, Rem (with cap) Hi voltage harness has the 8 pin connector
12	<a href="#">12-2928-02</a>	Water level sensor harness
13	<a href="#">11-0622-21</a>	Light & switch panel D, E series

# C1448, C1848, C2148 Service Parts

## Compressors

Model	Electrical	Compressor	Run Capacitor	PTCR
C1448-32	208-230/60/1	<a href="#">18-8749-22</a>	<a href="#">18-1902-70</a>	<a href="#">18-8840-01</a>
C1448-6	230/50	<a href="#">18-8749-27</a>	<a href="#">18-1902-70</a>	<a href="#">18-8840-01</a>
C1448-3	208-230/60/3	<a href="#">18-8749-24</a>	-	-
C1848-32 A-D series	208-230/60/1	<a href="#">18-8751-23</a>	<a href="#">18-1902-71</a>	<a href="#">18-8840-01</a>
C1848-32 E series	208-230/60/1	<a href="#">18-8750-22</a>	<a href="#">18-1902-70</a>	<a href="#">18-8840-01</a>
C1448-63	230/380-420/50/3	<a href="#">18-8749-11</a>	-	-
C1848-6	230/50	<a href="#">18-8751-27</a>	<a href="#">18-1902-71</a>	<a href="#">18-8840-01</a>
C1848-3	208-230/60/3	<a href="#">18-8751-25</a>	-	-
C2148-32 - WC	208-230/60/1	<a href="#">18-8930-24</a>	<a href="#">18-1902-27</a>	<a href="#">18-8840-01</a>
C2148-6 - WC	230/50	<a href="#">18-8930-26</a>	<a href="#">18-1902-59</a>	<a href="#">18-8840-01</a>
C2148-3 - WC	208-230/60/3	<a href="#">18-8930-25</a>	-	-
C2148-32 - RC	208-230/60/1	<a href="#">18-8923-22</a>	<a href="#">18-1902-27</a>	<a href="#">18-8840-01</a>
C2148-6 - RC	230/50	<a href="#">18-8923-26</a>	<a href="#">18-1902-59</a>	<a href="#">18-8840-01</a>
C2148-3 - RC	208-230/60/3	<a href="#">18-8923-23</a>	-	-

Model	Bolt	Washer	Grommet	Sleeve
C1448, C1848	<a href="#">03-1420-20</a>	<a href="#">03-1407-07</a>	<a href="#">18-2300-27</a>	<a href="#">18-2300-26</a>
C2148	<a href="#">03-1405-20</a>	<a href="#">03-1407-07</a>	<a href="#">18-2300-27</a>	<a href="#">18-2300-26</a>

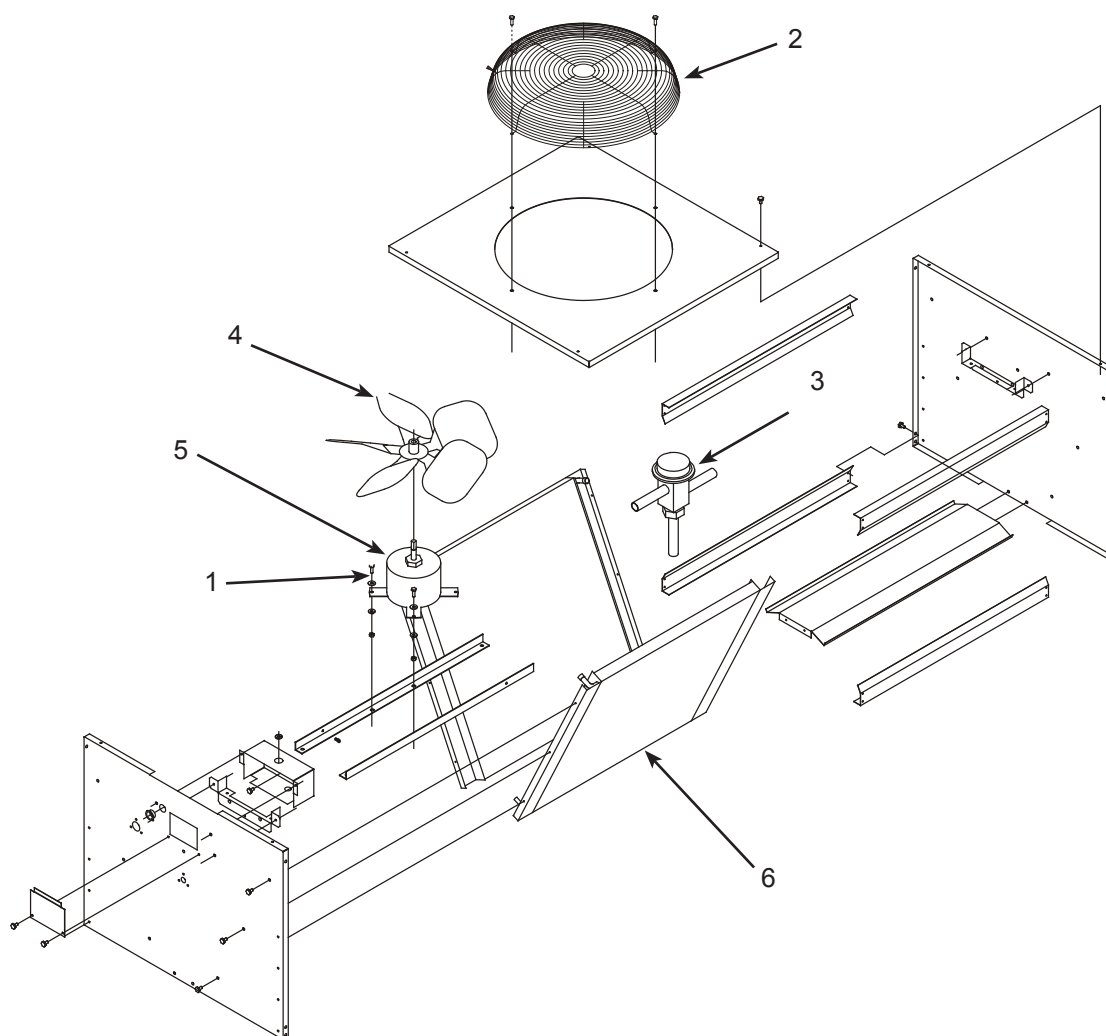
Model	Internal crankcase heater*	External crankcase heater*
C1448R, C1848R, C2148R	<a href="#">18-2308-01</a>	<a href="#">12-3043-03</a>

\* Included with replacement compressor

Compressor shells changed early 2012, crankcase heaters are external after the change. Suction and discharge diameters also changed. Replacement compressors supplied with necessary fittings.

# C1448, C1848, C2148 Service Parts

## Remote Condenser, ERC311 and ERC611



Item Number	Part Number	Description	Not Shown:	
1	<a href="#">03-1405-08</a>	Screw	A37169-001	Leg
2	<a href="#">02-3575-01</a>	Fan guard	A37170-001	Leg brace - ECR311
3	<a href="#">11-0422-22</a>	Headmaster	A37296-001	Leg brace - ERC611
4	<a href="#">18-8816-01</a>	Fan blade - ERC311	<a href="#">03-1645-01</a>	Screw for legs
	<a href="#">18-8820-01</a>	Fan blade - ERC611	<a href="#">16-0850-01</a>	Quick connect, discharge
5	<a href="#">12-2651-01</a>	Fan motor - ERC311	<a href="#">16-0850-03</a>	Quick connect, liquid
	<a href="#">12-2717-01</a>	Fan motor - ERC611	<a href="#">16-1100-08</a>	Quick connect w/ stub for 3/8 inch line set tube
6	<a href="#">18-8827-01</a>	Coil, ERC311	<a href="#">16-1100-09</a>	Quick connect w/ stub for 1/2 inch line set tube
	<a href="#">18-8819-01</a>	Coil, ERC611	Used on A-D	