

EH330 and EH430 Service Parts

This part list contains the service parts for the Eclipse 1200, 1400, 1800 and 2000 systems.

The models that are covered include:

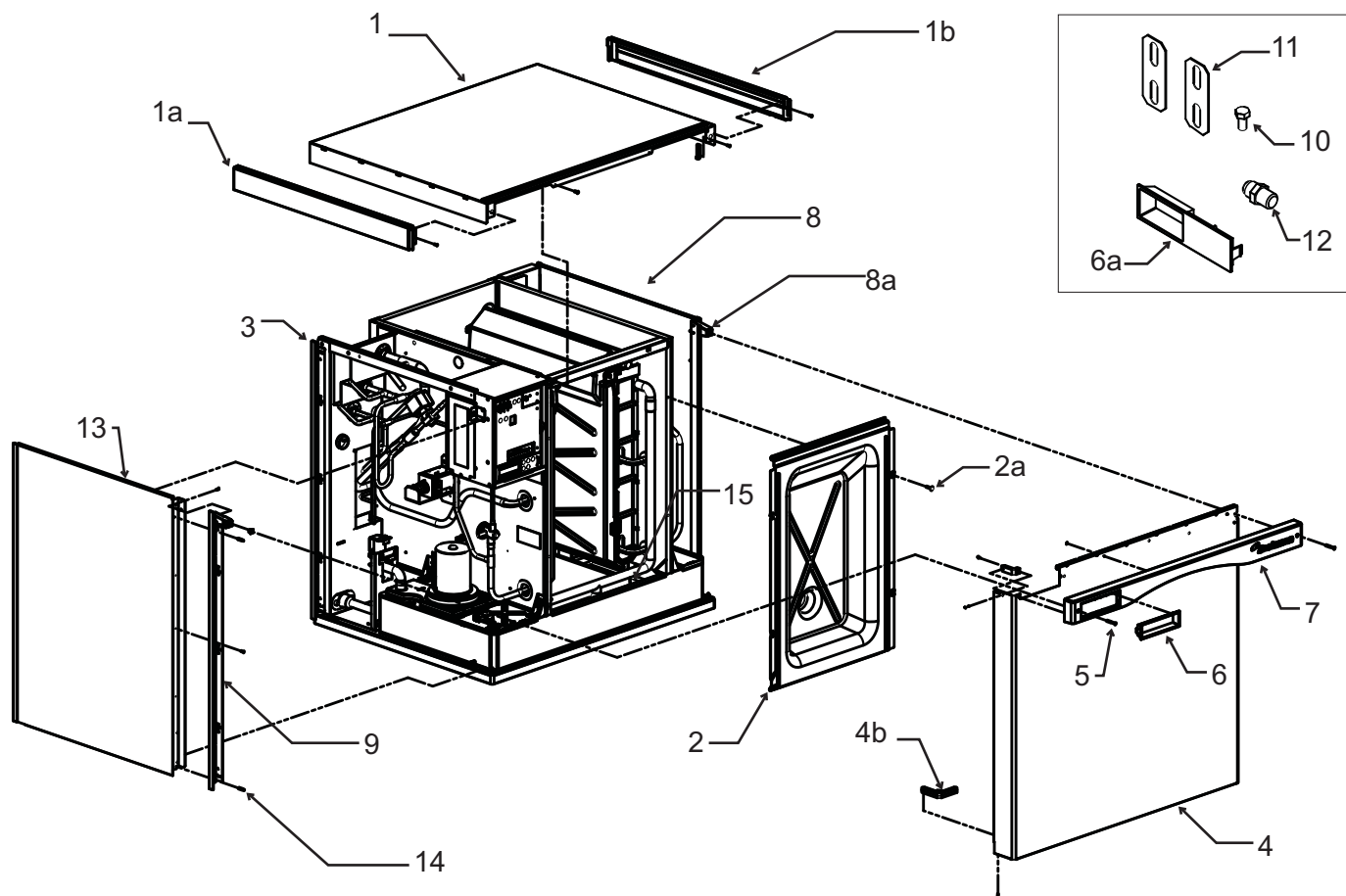
- EH330
- EH430
- C1200CP
- C1410CP
- C1800CP
- C2000CP
- ERC1086
- ERC2086

Table of Contents

EH330 Cabinet - A Series	Page 2	EH330 or EH430 Schematic Diagram	Page 18
EH330 Cabinet - B Series	Page 3	EH330 or EH430 Wiring Diagram	Page 19
EH430 Cabinet - A Series	Page 4	CP Single Phase Schematic Diagram	Page 20
EH430 Cabinet - B Series	Page 5	CP Single Phase Wiring Diagram	Page 21
EH330 and EH430 Interior Parts	Page 6	CP Three Phase Wiring Diagram	Page 22
EH330 and EH430 Refrigeration System	Page 7	CP Three Phase Schematic Diagram	Page 23
EH330 Evaporator Compartment	Page 8		
EH430 Evaporator Compartment	Page 9		
EH330 or EH430 Electrical	Page 10		
CP Cabinet	Page 11		
C1200CP Refrigeration System	Page 12		
C1410CP Refrigeration Systems	Page 13		
C1800CP Refrigeration System	Page 14		
C2000CP Refrigeration System	Page 15		
CP Control Box	Page 16		
Remote Condensers	Page 17		

EH330 and EH430 Service Parts

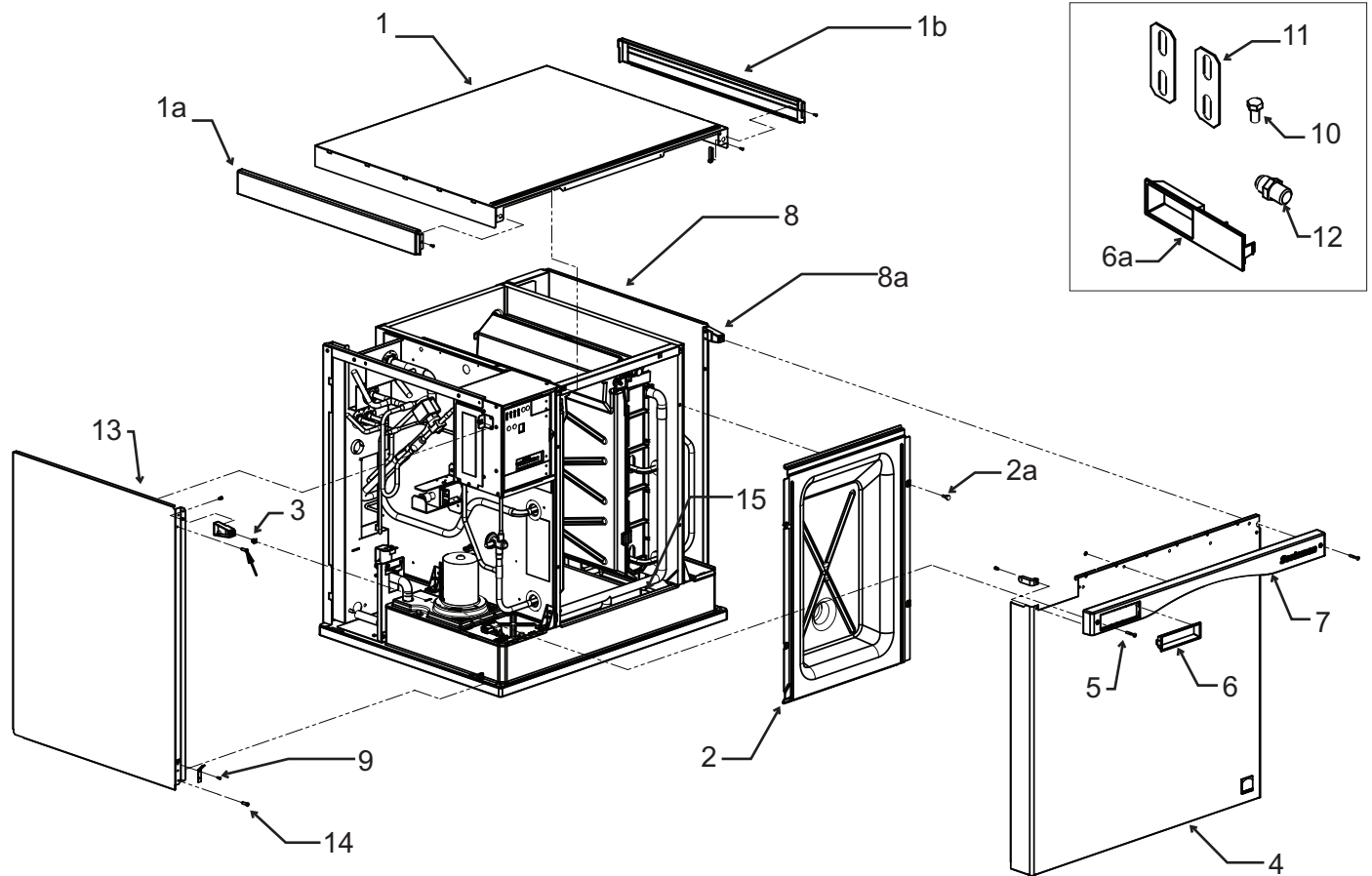
EH330 Cabinet - A Series



Item Number	Part Number	Description	Item Number	Part Number	Description
1	A38941-022	Top panel, w/trim strips	8a	02-4215-01	Receptacle
1a	02-4221-01	Left trim strip	9	02-4067-01	Side panel support
1b	02-4221-02	Right trim strip	10	03-1405-15	Screw
2	02-4504-01	Evaporator cover	11	A30911-015	Machine straps
2a	03-0727-05	Screw	12	16-0355-00	Inlet water fitting, flare
3	02-4067-03	Side panel support	13	A38551-022	Left side panel
4	A38552-022	Front panel assembly, includes trim strip, gussets and labels.	14	03-1404-12	Screw
4a	02-4216-01	Top gusset	15	13-0943-01	Gasket tape
4b	02-4217-01	Bottom gusset			
5	03-1735-03	Screw, front panel			
6	02-4284-01	Bezel, full window			
6a	02-4284-02	Bezel, partial window			
7	02-4214-02	Trim strip			
8	A38553-021	Right side panel assy			

EH330 and EH430 Service Parts

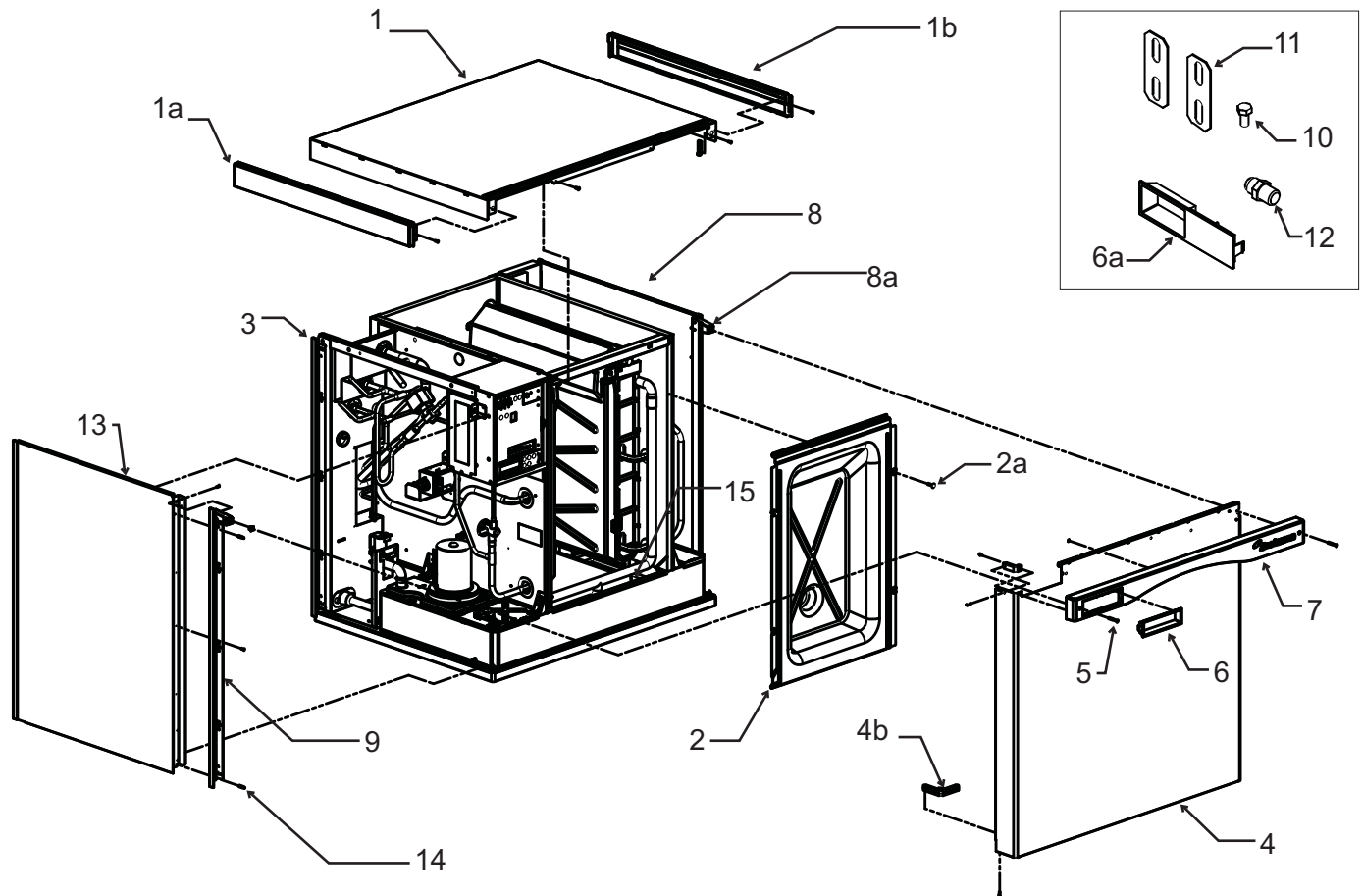
EH330 Cabinet - B Series



Item Number	Part Number	Description	Item Number	Part Number	Description
1	A39579-022	Top panel	9	A39571-001	Panel clip
1a	02-4221-01	Left trim strip*	10	03-1405-15	Screw
1b	02-4221-02	Right trim strip*	11	A30911-015	Machine straps
2	02-4504-01	Evaporator cover	12	16-0355-00	Inlet water fitting, flare**
2a	03-0727-05	Screw	13	A39580-022	Left side panel
3	03-3804-01	Screw receptacle	14	03-1404-12	Screw
4	A39578-022	Front panel assembly, includes trim strip and labels.	15	13-0943-01	Gasket tape
4a	02-4216-01	Top gusset	* Side trim strips discontinued mid 2011.		
5	03-1735-03	Screw, front panel	** Bezel and fitting discontinued from production 2/8/2012.		
6	02-4284-01	Bezel, full window			
6a	02-4284-02	Bezel, partial window**			
7	02-4214-02	Trim strip			
8	A39581-021	Right side panel assy			
8a	02-4215-01	Receptacle			

EH330 and EH430 Service Parts

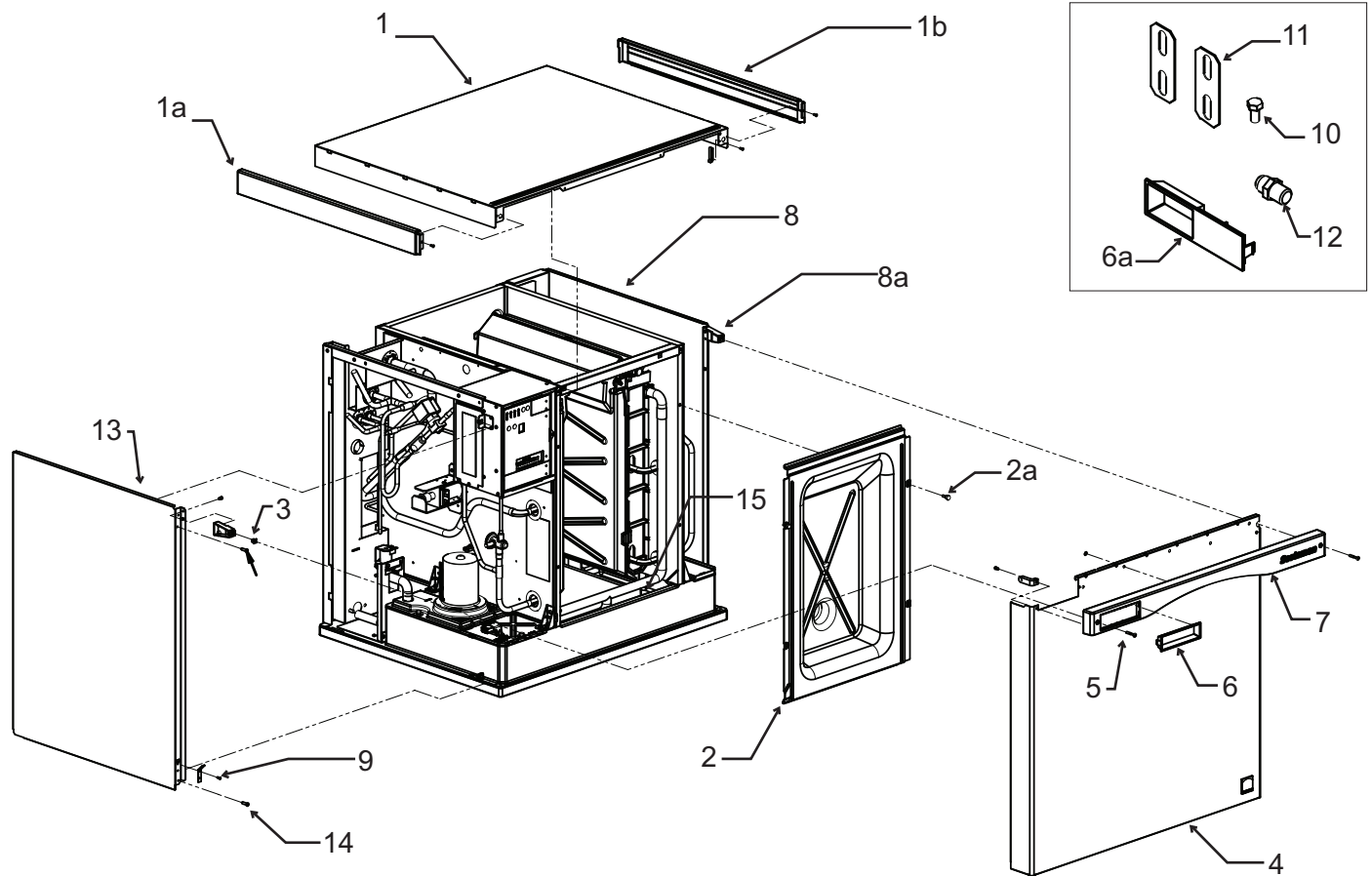
EH430 Cabinet - A Series



Item Number	Part Number	Description	Part Number	Description
1	A38941-022	Top panel, w/trim strips	8a	02-4215-01 Receptacle
1a	02-4221-01	Left trim strip	9	02-4067-03 Side panel support
1b	02-4221-02	Right trim strip	10	03-1405-15 Screw
2	02-4184-01	Evaporator cover	11	A30911-015 Machine straps
2a	03-0727-05	Screw	12	16-0355-00 Inlet water fitting, flare
3	02-4067-03	Side panel support	13	A38551-024 Left side panel
4	A38552-023	Front panel assembly, includes trim strip, gussets and labels.	14	03-1404-12 Screw
4a	02-4216-01	Top gusset	15	13-0943-01 Gasket tape
4b	02-4217-01	Bottom gusset		
5	03-1735-03	Screw, front panel		
6	02-4284-01	Bezel, full window		
6a	02-4284-02	Bezel, partial window		
7	02-4214-02	Trim strip		
8	A38553-022	Right side panel assy		

EH330 and EH430 Service Parts

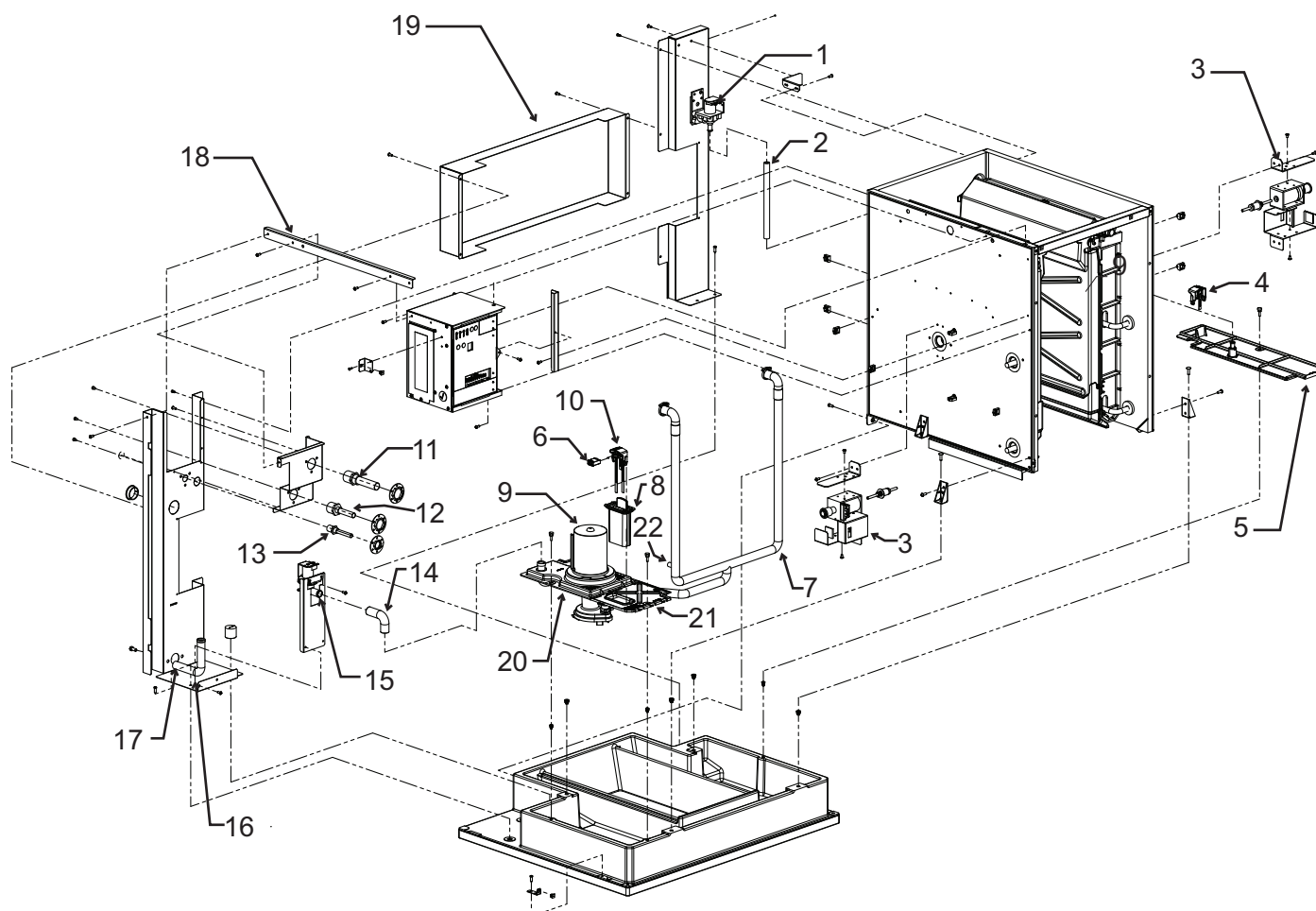
EH430 Cabinet - B Series



Item Number	Part Number	Description	Item Number	Part Number	Description
1	A39579-022	Top panel, w/trim strips	9	A39571-001	Panel clip
1a	02-4221-01	Left trim strip	10	03-1405-15	Screw
1b	02-4221-02	Right trim strip	11	A30911-015	Machine straps
2	02-4504-01	Evaporator cover	12	16-0355-00	Inlet water fitting, flare
2a	03-0727-05	Screw	13	A39580-024	Left side panel
3	03-3804-01	Screw receptacle	14	03-1404-12	Screw
4	A39578-023	Front panel assembly, includes trim strip and labels.	15	13-0943-01	Gasket
4a	02-4216-01	Top gusset			
5	03-1735-03	Screw, front panel			
6	02-4284-01	Bezel, full window			
6a	02-4284-02	Bezel, partial window			
7	02-4214-02	Trim strip			
8	A39581-022	Right side panel assy			
8a	02-4215-01	Receptacle			

EH330 and EH430 Service Parts

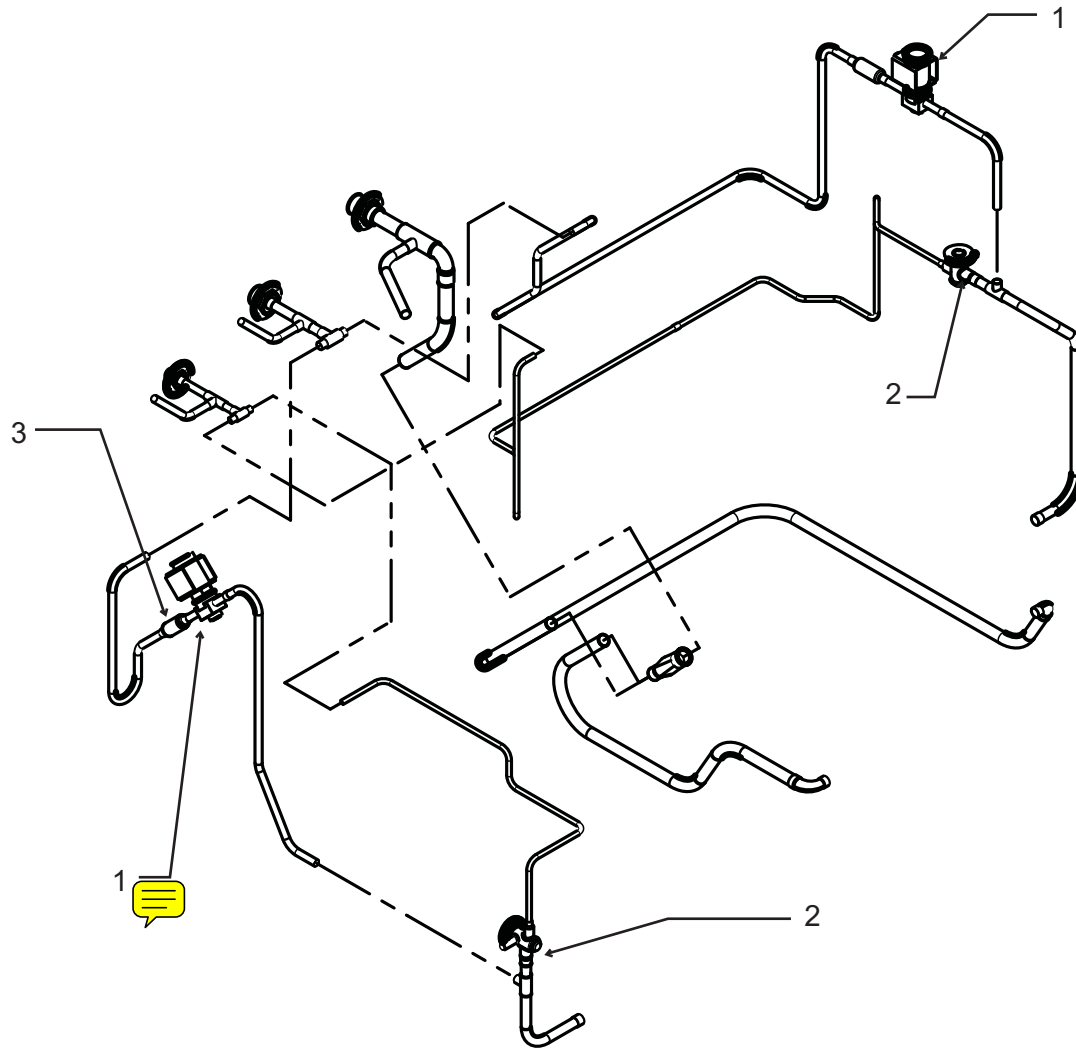
EH330 and EH430 Interior Parts



Item Number	Part Number	Description	Item Number	Part Number	Description
1	12-2922-01	Inlet water sol valve	12	16-0850-01	Vapor line fitting
2	13-0674-02	Tubing, order 2 (ft)	13	16-0850-03	Liquid line fitting
3	12-3060-21	Harvest assist	14	A38863-001	Tube
4	A39030-022	Level sensor, discontinued	15	11-0564-01	Purge valve
5	02-4175-01	Sump cover, rt	16	A38863-002	Tube, out
6	12-2928-01	WLS harness, no wire to item 4	17	02-3692-21	Drain fitting
7	02-4182-01	Water pump hose, EH430	18	A38804-001	Brace
	02-4505-01	Water pump hose, EH330	19	A38796-001	Chase
8	02-4332-01	WLS cover, prior fits 21	20	02-4177-01	Pump bracket
8a	02-4646-01	Probe guard, fits 21a	21	02-4178-01	Sump cover, prior, fits 8
9	12-2920-21	Water pump	21a	02-4649-01	Sump cover, fits 8a
10	A39030-021	Water level sensor	22	11-0572-21	Temp sensor set
11	16-0850-04	Suction line fitting			

EH330 and EH430 Service Parts

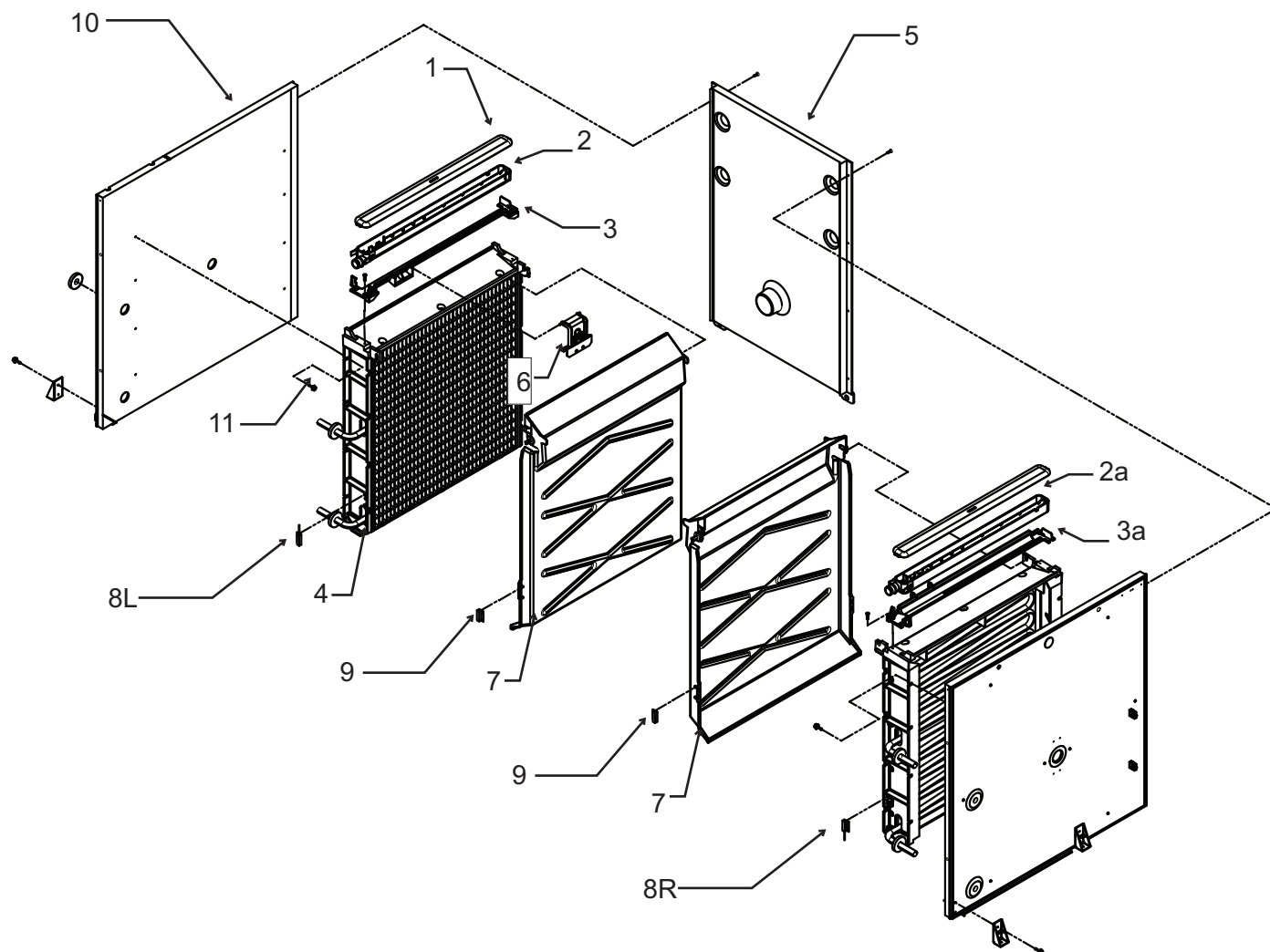
EH330 and EH430 Refrigeration System



Item	Part	
Number	Number	Description
1	11-0493-03	Vapor valve
2	16-1130-01	TXV - EH430
	16-1142-01	TXV - EH330
	02-4045-01	Insulation for TXV
3	16-1063-01	Strainer

EH330 and EH430 Service Parts

EH330 Evaporator Compartment



Item Number	Part Number	Description
1	02-4065-01	Water distributor cover
2	02-4064-01	Water distributor, left
2a	02-4064-02	Water distributor, right
3	02-4205-01	Mounting bracket, left
3a	02-4205-02	Mounting bracket, right
4	see table	Evaporator

8L	11-0563-06	Curtain switch, left
8R	11-0563-03	Curtain switch, right
9	11-0563-02	Curtain switch magnet
10	13-0943-01	Gasket tape
11	03-3868-01	Screw

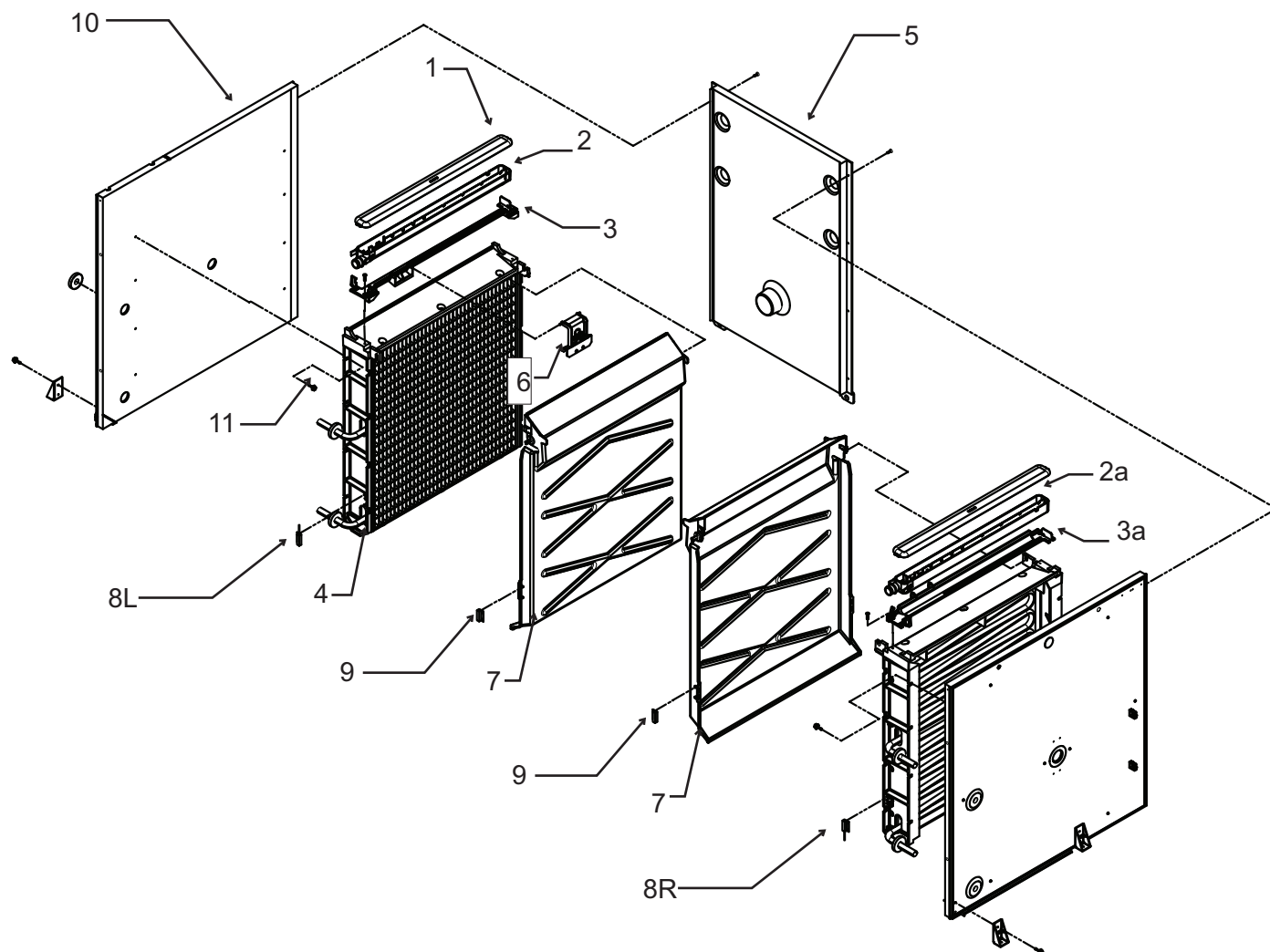
Note: Item 7 includes item 9, shipped loose.

	small cube	medium cube
Right	A38627-023	A38627-024
Left	A38627-021	A38627-022

5	A39480-001	Back wall
6	A39031-021	Ice thickness sensor
7	02-4100-32	Curtain

EH330 and EH430 Service Parts

EH430 Evaporator Compartment



Item Number	Part Number	Description
1	02-4065-01	Water distributor cover
2	02-4064-01	Water distributor, left
2a	02-4064-02	Water distributor, right
3	02-4205-01	Mounting bracket, left
3a	02-4205-02	Mounting bracket, right
4	see table	Evaporator

8L	11-0563-06	Curtain switch, left
8R	11-0563-03	Curtain switch, right
9	11-0563-02	Curtain switch magnet
10	13-0943-01	Gasket tape
11	03-3868-01	Screw

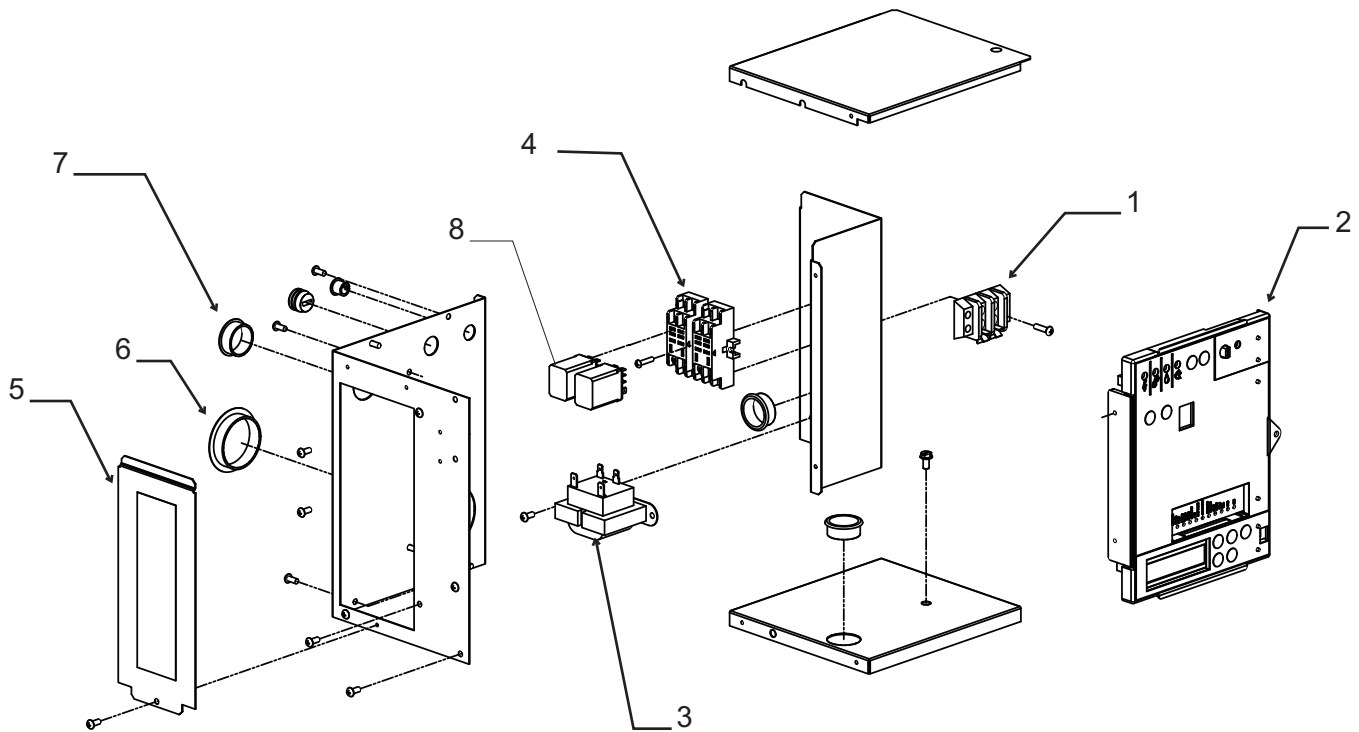
Note: Item 7 includes item 9, shipped loose.

	small cube	medium cube
Right	A38628-023	A38628-024
Left	A38628-021	A38628-022

5	A38677-001	Back wall
6	A39031-021	Ice thickness sensor
7	02-4611-21	Curtain

EH330 and EH430 Service Parts

EH330 or EH430 Electrical



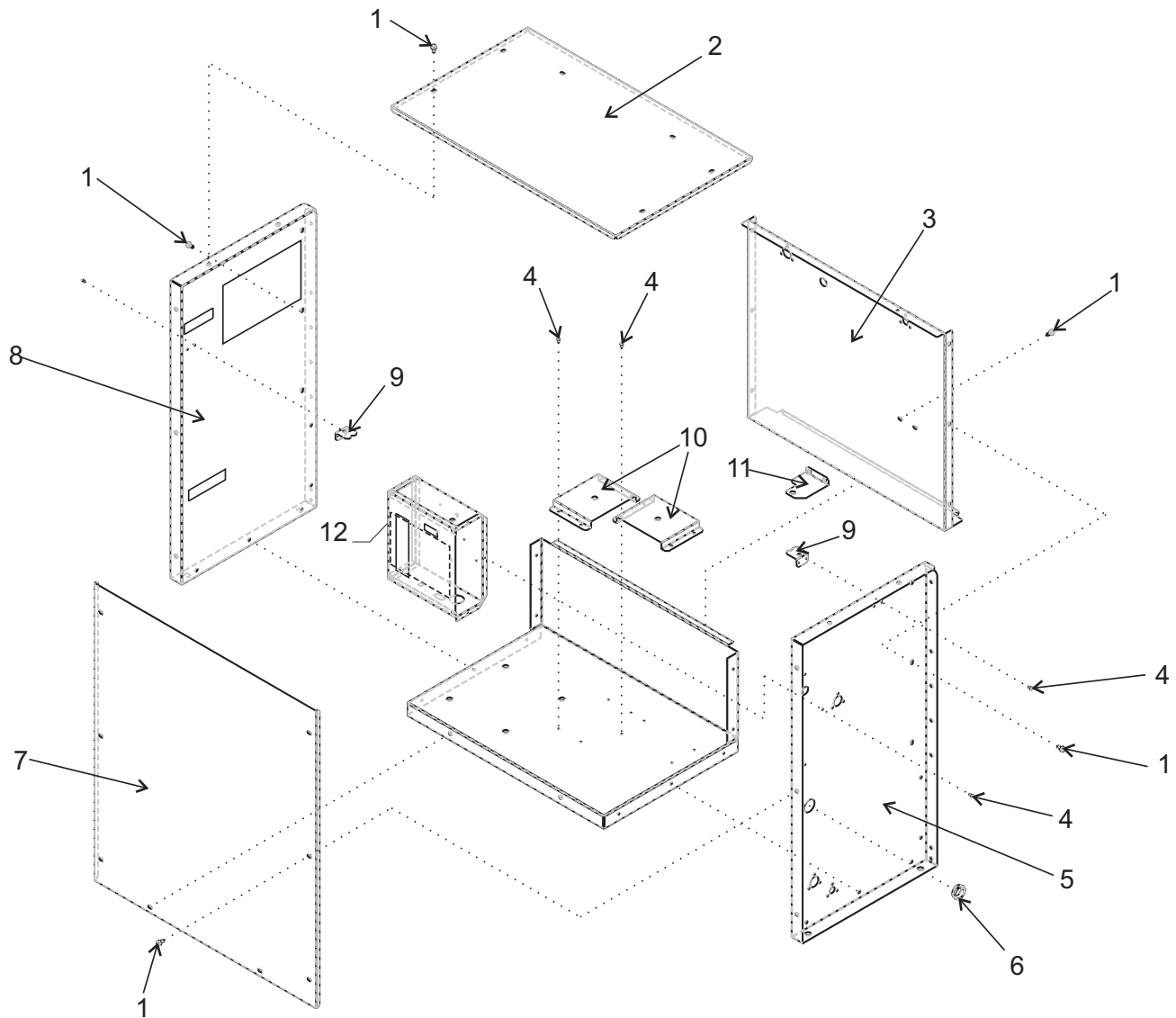
Item	Part	
Number	Number	Description
1	12-2780-01	Terminal strip
2	11-0550-28	Controller
3	12-2924-01	Transformer
4	12-2949-02	Relay base
5	A39287-001	Cover
6	12-1213-15	Snap bushing
7	12-1213-11	Snap bushing
8	12-2949-01	Relay

Not Illustrated:

9	12-2954-01	Low voltage harness - to interconnecting wire
10	12-2943-01	High voltage harness (has large plug)
11	12-2940-01	Control power harness
12	12-1638-19	Power cord

EH330 and EH430 Service Parts

CP Cabinet

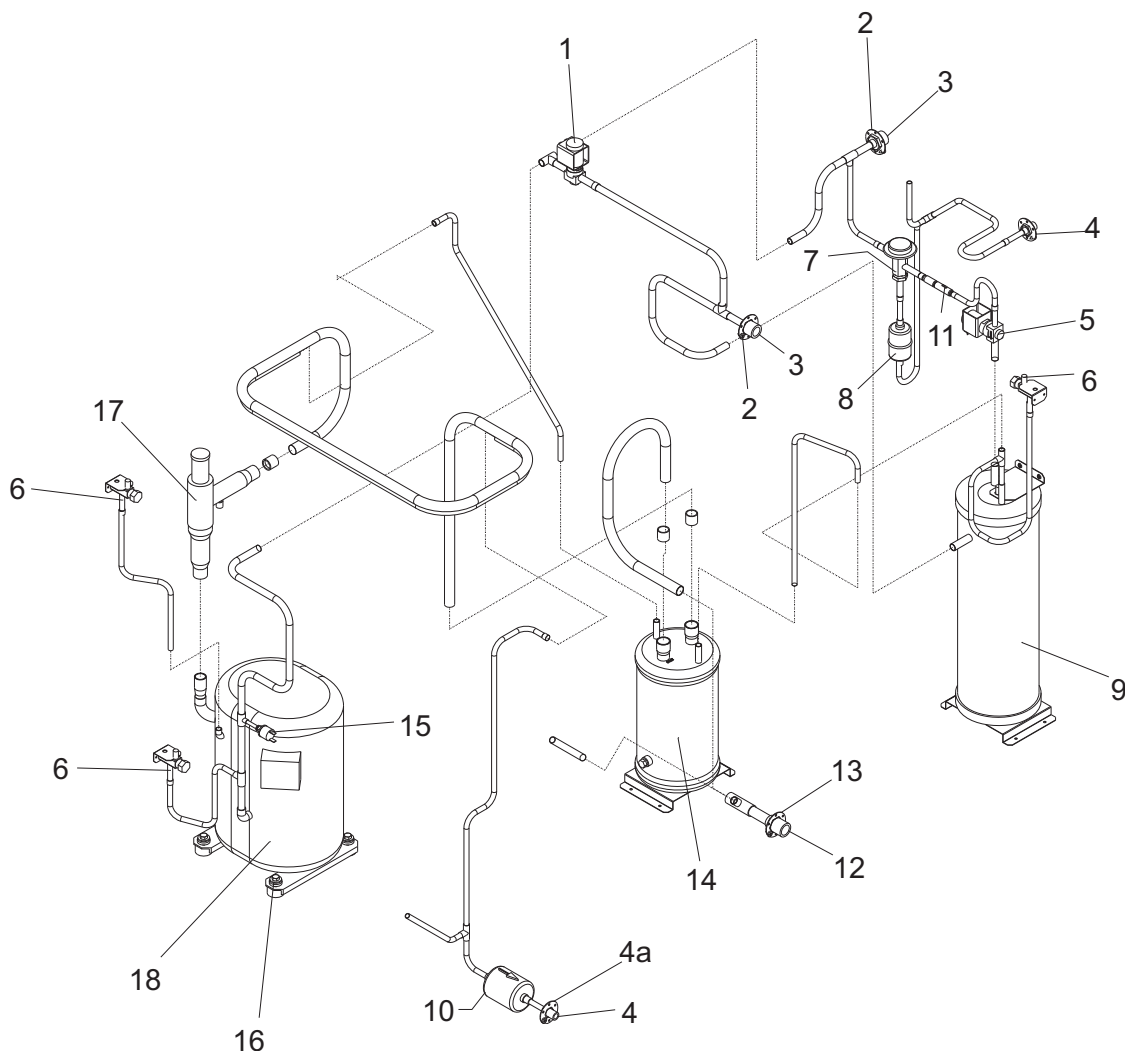


Item Number	Part Number	Description
1	03-1645-01	Screw
2	A37853-001	Top cover
3	A37845-001	Back panel
4	03-1531-01	Screw
5	A37829-001	Right side panel
6	12-1213-20	Snap bushing
7	A37896-001	Front cover
8	A37829-002	Left side panel
9	A37962-001	Service valve bracket

Item Number	Part Number	Description
10	A37948-001	Rec btm bracket - all or accumulator bracket - C1200CP or C1410CP
	A39319-001	Accumulator bracket, C1800CP or C2000CP
11	A37949-001	Receiver top bracket
12	A38430-001	Control box cover

EH330 and EH430 Service Parts

C1200CP Refrigeration System



Item Number	Part Number	Description	Part Number	Description
1	11-0507-03	By pass valve	13	16-0701-18 Mounting flange
2	16-0701-14	Mounting flange	14	16-0801-22 Accumulator
3	16-0850-01	Discharge quick connect	15	11-0501-22 Hi pressure cut out
4	16-0850-03	Liquid quick connect	16	18-2300-27 Mounting grommet
4a	16-0701-07	Mounting flange		18-2300-26 Sleeve
5	11-0546-01	Liquid inlet valve		03-1406-07 Washer
6	16-0832-20	Access valve		03-1404-15 Cap screw
7	11-0422-22	Headmaster	17	16-1096-21 CPR valve
8	02-3231-02	Filter	18	Compressors
9	16-1085-01	Receiver		
10	02-3319-02	Filter drier		
11	16-1029-01	Check valve		
12	16-0850-04	Suction quick connect		

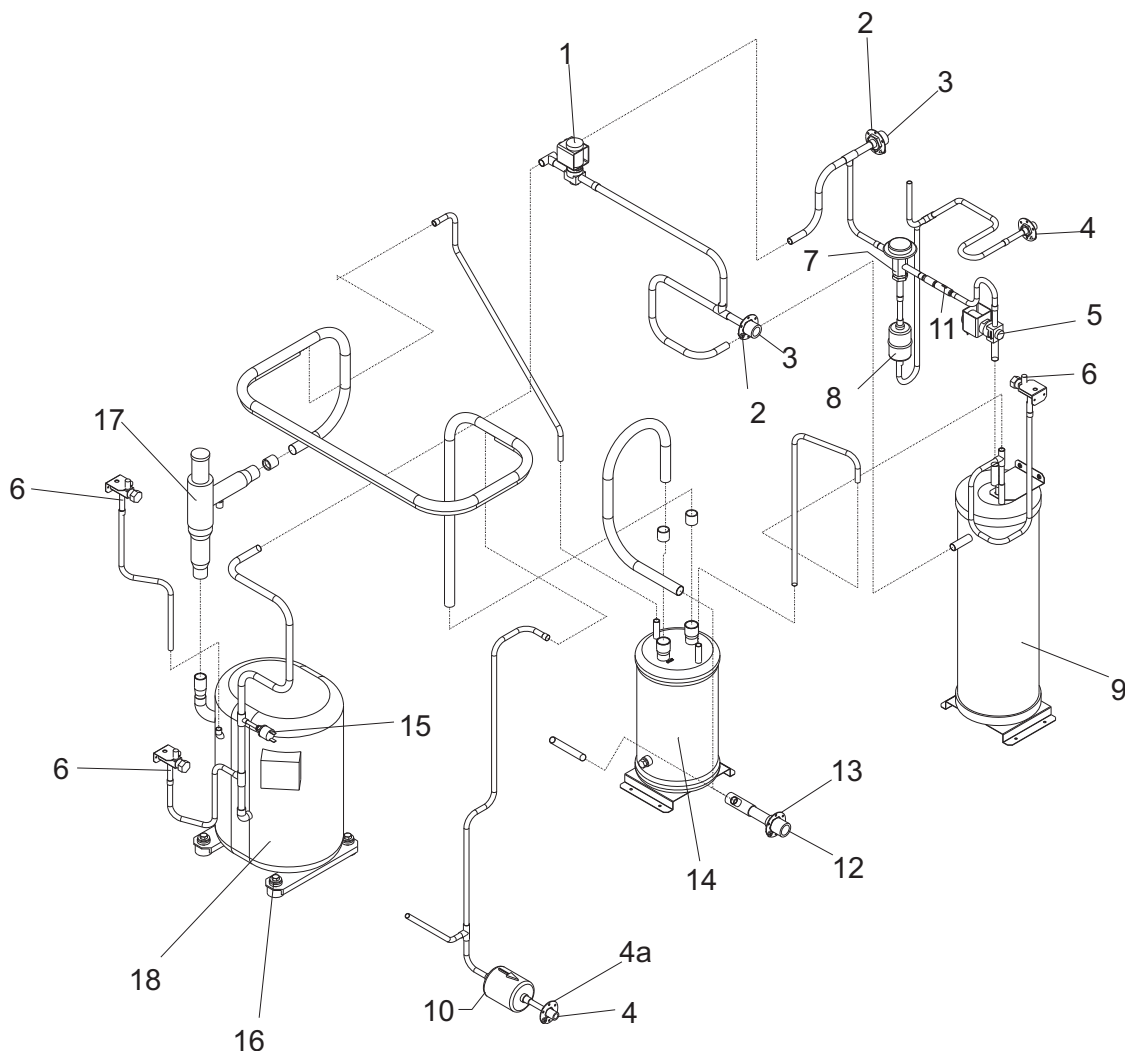
C1200CP-32	single phase	18-8750-22
C1200CP-2	three phase	18-8750-24

All compressors are 208-230 volt, 60 Hz.

Single phase compressors include starting components. All include a drier and crankcase heaters.

EH330 and EH430 Service Parts

C1410CP Refrigeration Systems



Item Number	Part Number	Description	Part Number	Description
1	11-0507-03	By pass valve	13	16-0701-18 Mounting flange
2	16-0701-14	Mounting flange	14	16-0801-22 Accumulator
3	16-0850-01	Discharge quick connect	15	11-0501-22 Hi pressure cut out
4	16-0850-03	Liquid quick connect	16	18-2300-27 Mounting grommet
4a	16-0701-07	Mounting flange		18-2300-26 Sleeve
5	11-0546-01	Liquid inlet valve		03-1406-07 Washer
6	16-0832-20	Access valve		03-1404-15 Cap screw
7	11-0422-22	Headmaster	17	16-1096-21 CPR valve
8	02-3231-02	Filter	18	Compressors
9	16-1085-01	Receiver		
10	02-3319-02	Filter drier		
11	16-1029-01	Check valve		
12	16-0850-04	Suction quick connect		

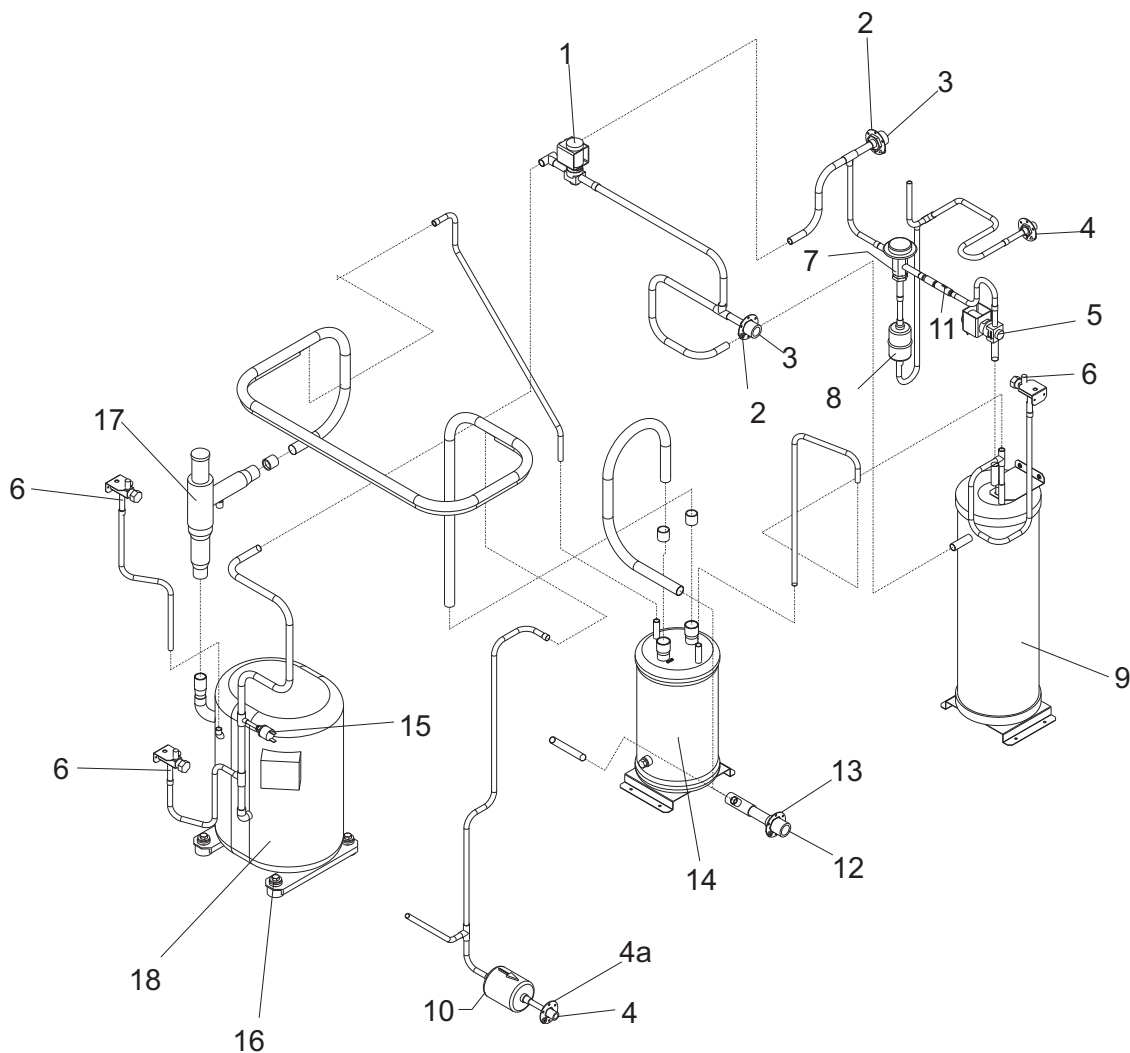
C1410CP-32	single phase	18-8749-22
C1410CP-2	three phase	18-8749-24

All compressors are 208-230 volt, 60 Hz.

Single phase compressors include starting components. All include a drier and crankcase heaters.

EH330 and EH430 Service Parts

C1800CP Refrigeration System



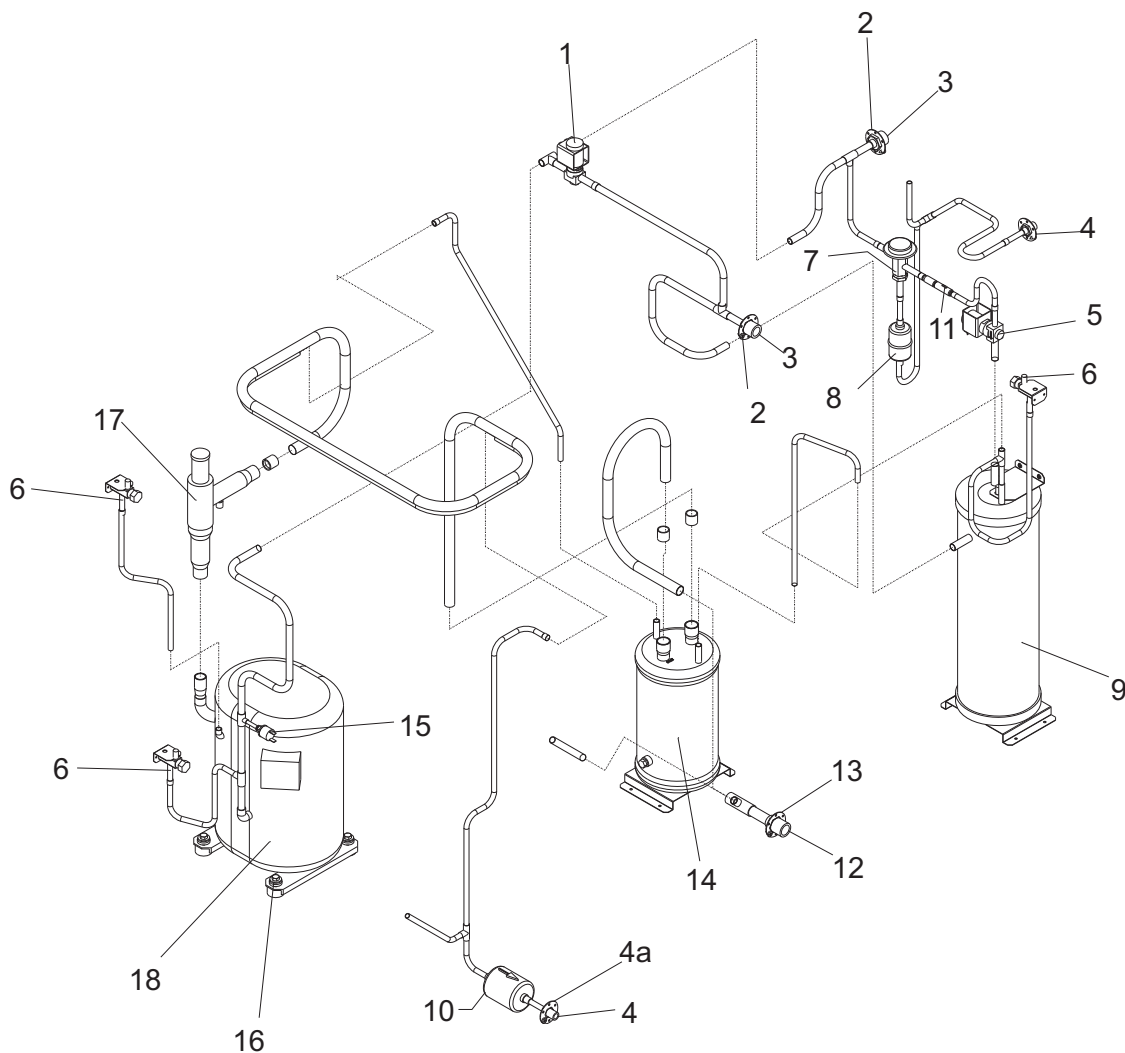
Item Number	Part Number	Description
1	11-0507-03	By pass valve
2	16-0701-14	Mounting flange
3	16-0850-01	Discharge quick connect
4	16-0850-03	Liquid quick connect
4a	16-0701-07	Mounting flange
5	11-0546-01	Liquid inlet valve
6	16-0832-20	Access valve
7	11-0422-22	Headmaster
8	02-3231-02	Filter
9	16-1085-01	Receiver
10	02-3319-02	Filter drier
11	16-1029-01	Check valve
12	16-0850-04	Suction quick connect
13	16-0701-18	Mounting flange
14	16-1122-21	Accumulator
15	11-0501-22	Hi pressure cut out
16	18-2300-27	Mounting grommet
	18-2300-26	Sleeve
	03-1406-07	Washer
	03-1404-15	Cap screw
17	16-1096-21	CPR valve
18	Compressors	
	C1800CP-32	single phase 18-8930-24
	C1800CP-2	three phase 18-8930-25

All compressors are 208-230 volt, 60 Hz.

Single phase compressors include starting components. All include a drier and crankcase heaters.

EH330 and EH430 Service Parts

C2000CP Refrigeration System



Item Number	Part Number	Description	Part Number	Description
1	11-0507-03	By pass valve	13	16-0701-18 Mounting flange
2	16-0701-14	Mounting flange	14	16-1122-21 Accumulator
3	16-0850-01	Discharge quick connect	15	11-0501-22 Hi pressure cut out
4	16-0850-03	Liquid quick connect	16	18-2300-27 Mounting grommet
4a	16-0701-07	Mounting flange		18-2300-26 Sleeve
5	11-0546-01	Liquid inlet valve		03-1406-07 Washer
6	16-0832-20	Access valve		03-1404-15 Cap screw
7	11-0422-22	Headmaster	17	16-1096-21 CPR valve
8	02-3231-02	Filter	18	Compressors
9	16-1085-01	Receiver		
10	02-3319-02	Filter drier		
11	16-1029-01	Check valve		
12	16-0850-04	Suction quick connect		

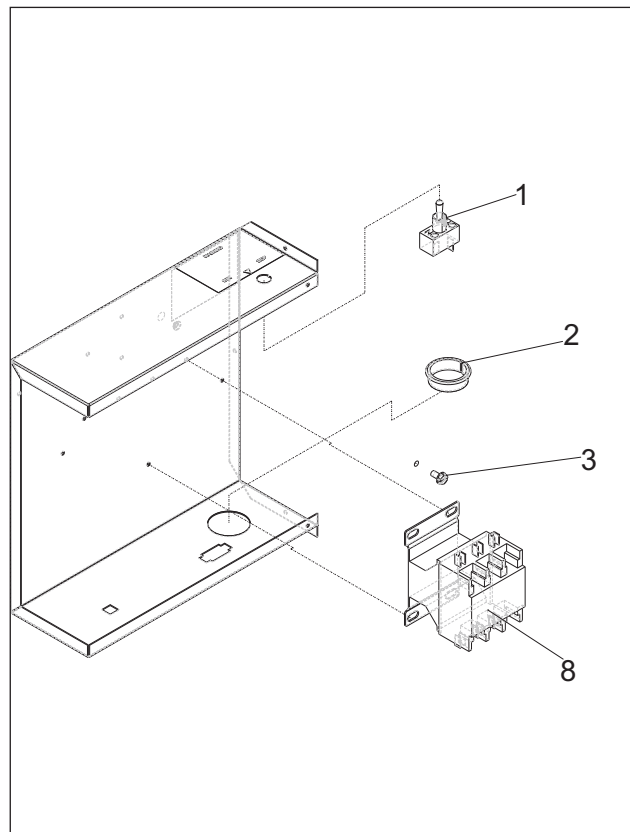
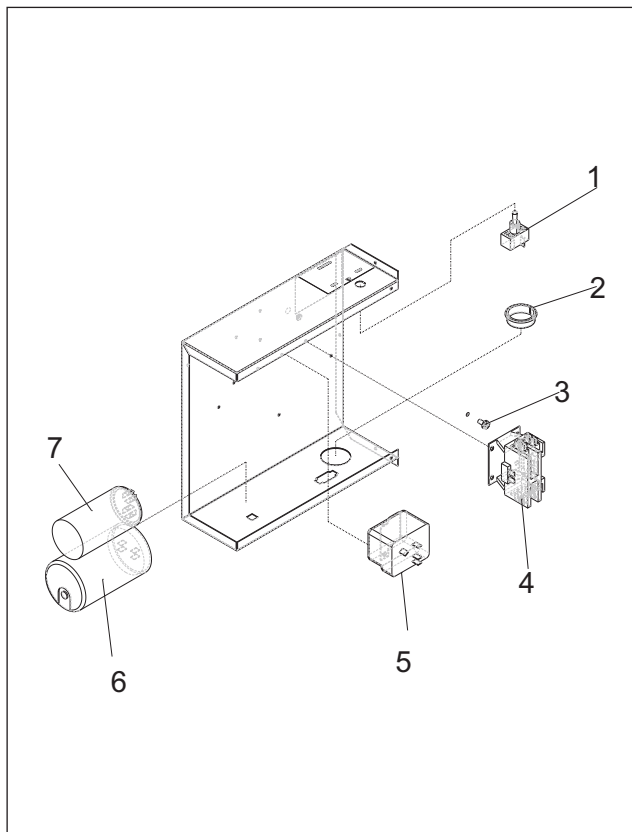
C2000CP-32	single phase	18-8923-22
C2000CP-2	three phase	18-8923-23

All compressors are 208-230 volt, 60 Hz.

Single phase compressors include starting components. All include a drier and crankcase heaters.

EH330 and EH430 Service Parts

CP Control Box



Item Number	Part Number	Description
1	12-2637-01	Toggle switch
2	12-1213-20	Snap bushing
3	03-1531-01	Mounting screw
4	12-2469-01	Single phase contactor

		C1200CP-32	C1410CP-32	C1800CP-32	C2000CP-32
5	Potential Relay	18-1903-46	18-1903-46	18-1903-62	18-1903-62
6	Start Capacitor	18-1901-48	18-1901-48	18-1901-27	18-1901-27
7	Run Capacitor	18-1902-70	18-1902-70	18-1902-27	18-1902-27

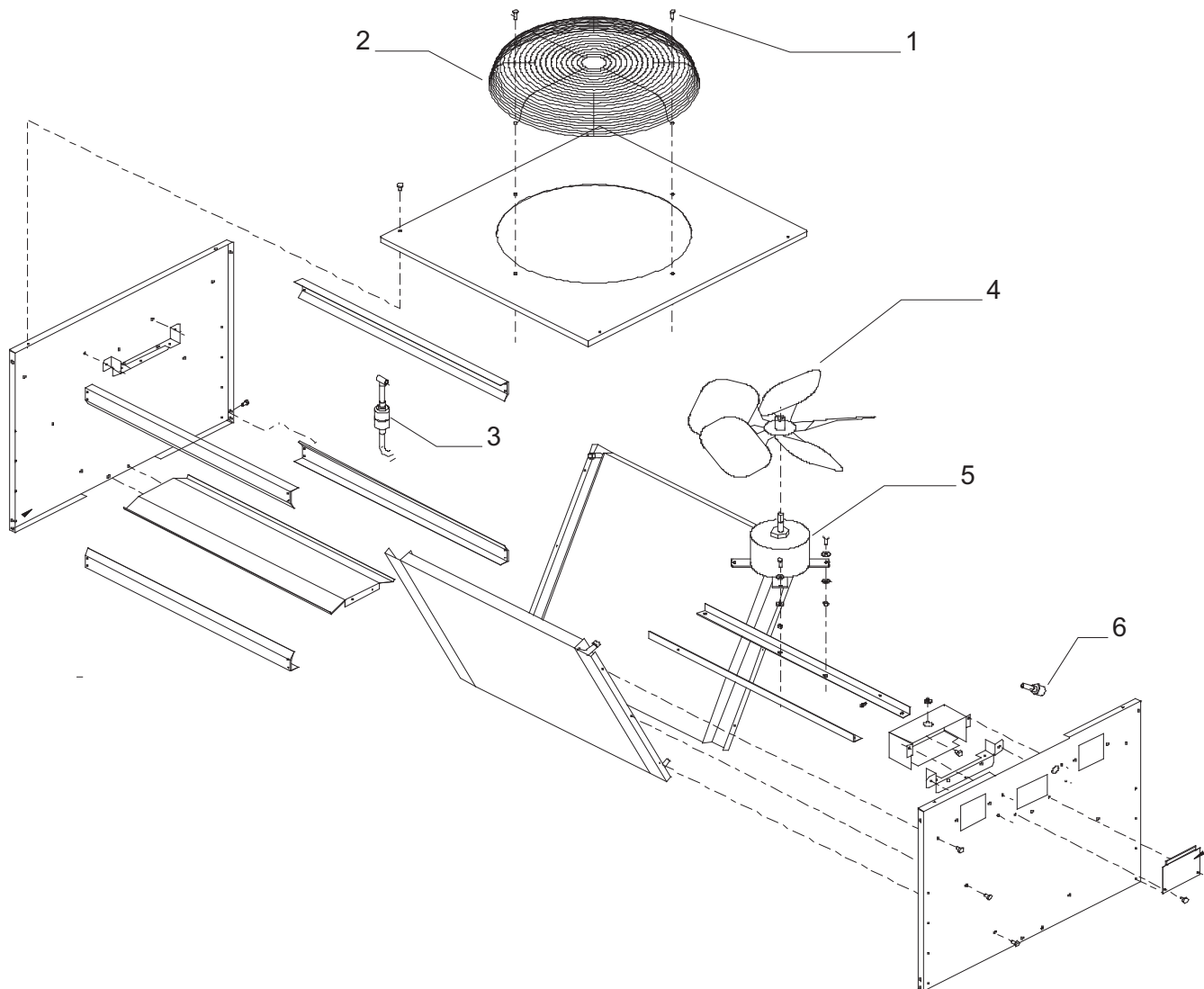
8 [12-2533-01](#) Three phase Contactor

Not Shown:

9 [12-2836-02](#) Transformer, 230 to 24

EH330 and EH430 Service Parts

Remote Condensers



Model ERC1086

Item Number	Part Number	Description
1	03-1405-08	Screw
2	02-3575-01	Fan guard
3	02-3231-03	Filter
4	18-8816-01	Fan blade
5	12-2651-01	Fan motor
6	16-1057-04	Quick connect, disch
	16-1057-03	Quick connect, liquid

Not Shown:

A37169-001	Leg
A37170-001	Leg brace
03-1645-01	Screw for legs

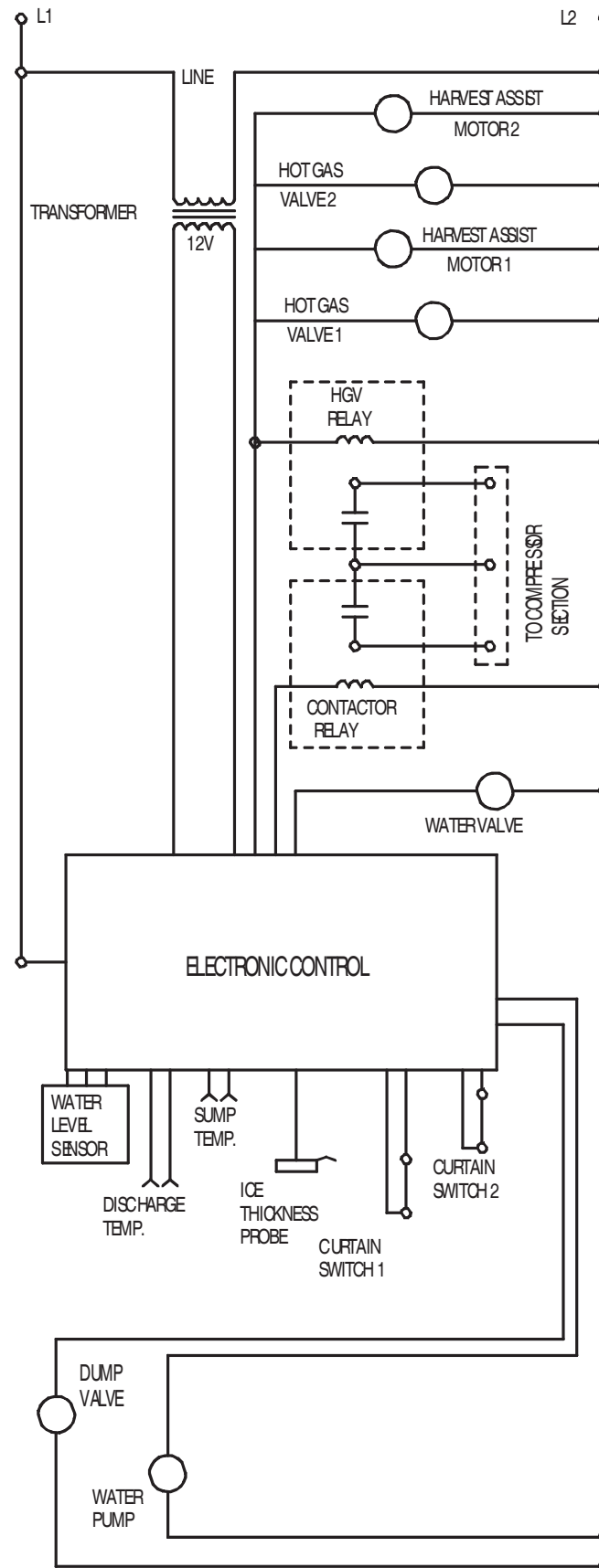
ERC2086

Item Number	Part Number	Description
1	03-1405-08	Screw
2	02-3770-01	Fan guard
3	02-3231-03	Filter
4	18-8820-01	Fan blade
5	12-2717-01	Fan motor
6	16-1057-04	Quick connect, disch
	16-1057-03	Quick connect, liquid

Not Shown:

A37169-001	Leg
A37296-001	Leg brace
03-1645-01	Screw for legs

EH330 or EH430 Schematic Diagram

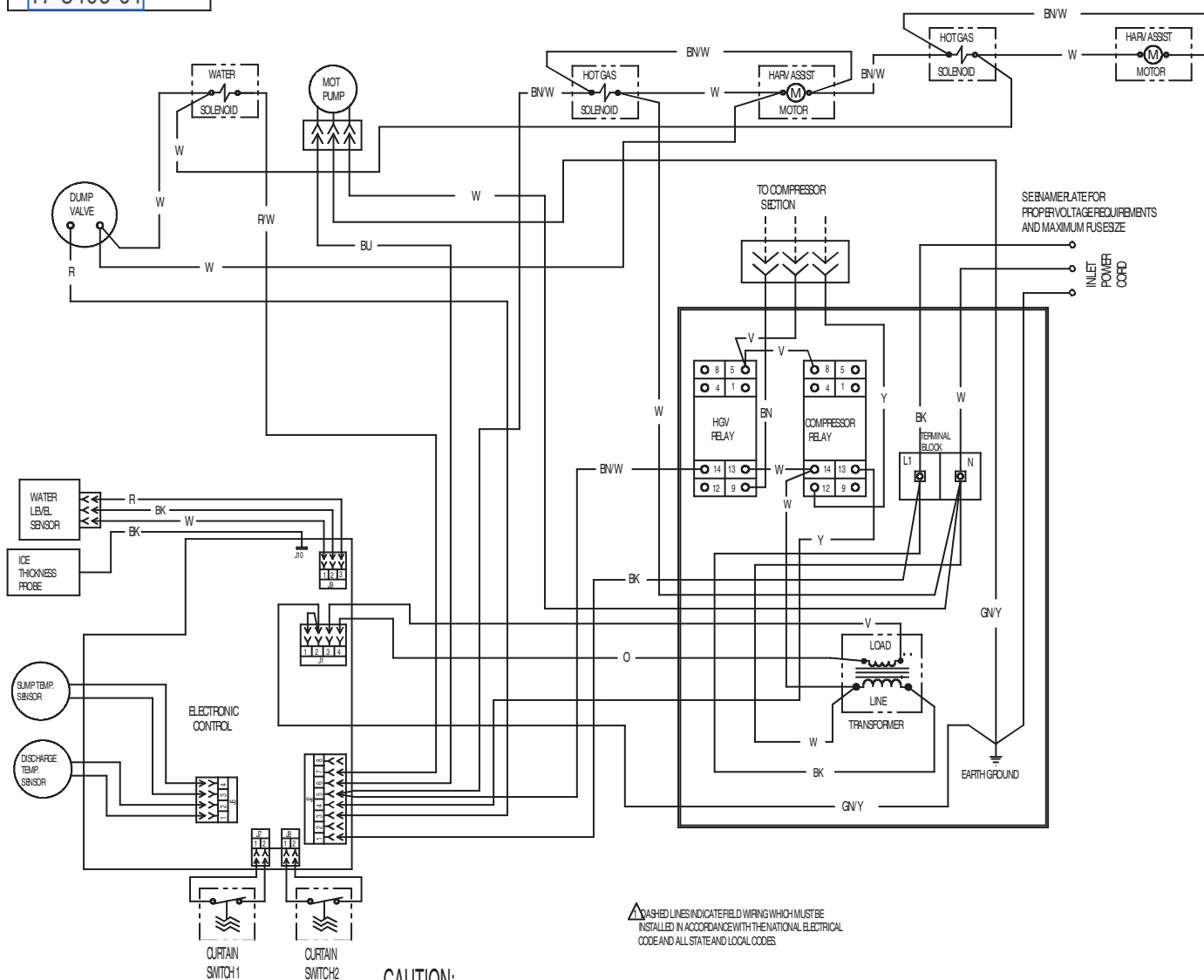


EH330 and EH430 Wiring Diagrams

EH330 or EH430 Wiring Diagram

17-3406-01

USE COPPER CONDUCTOR ONLY



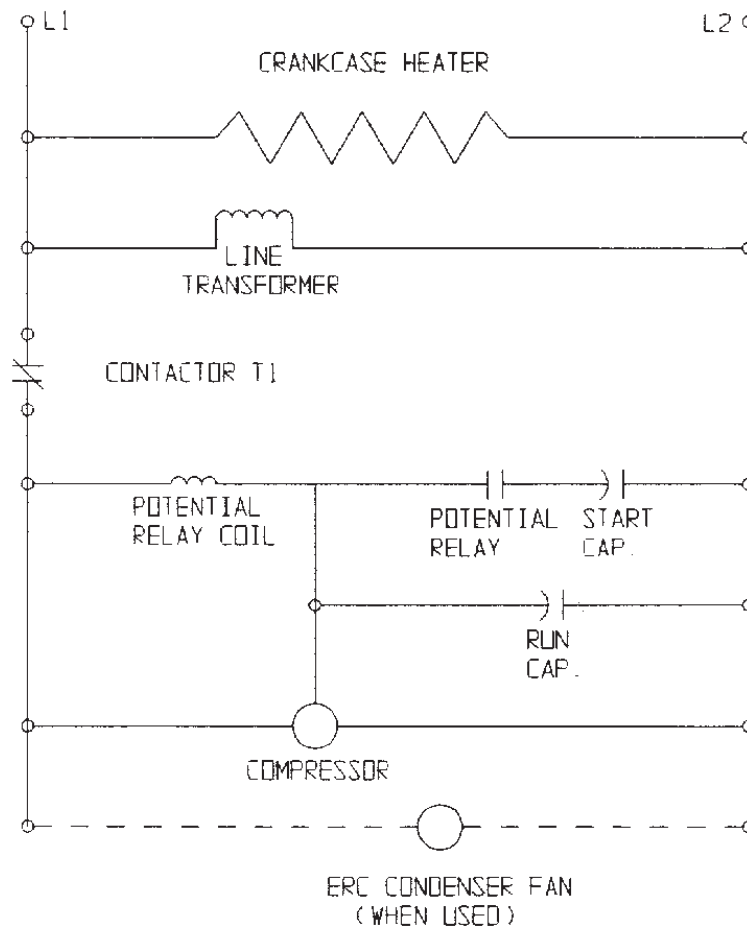
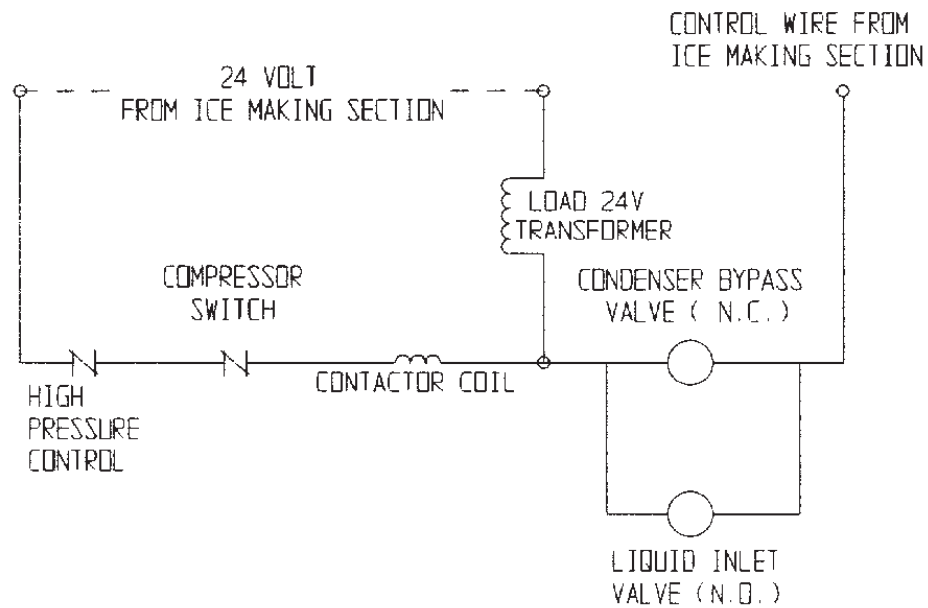
THIS UNIT MUST
BE GROUNDED.

CAUTION:

MORE THAN ONE DISCONNECT MEANS MAY BE
REQUIRED TO DISCONNECT ALL POWER TO THIS UNIT.

EH330 and EH430 Wiring Diagrams

CP Single Phase Schematic Diagram



CP Single Phase Wiring Diagram

USE COPPER CONDUCTORS ONLY

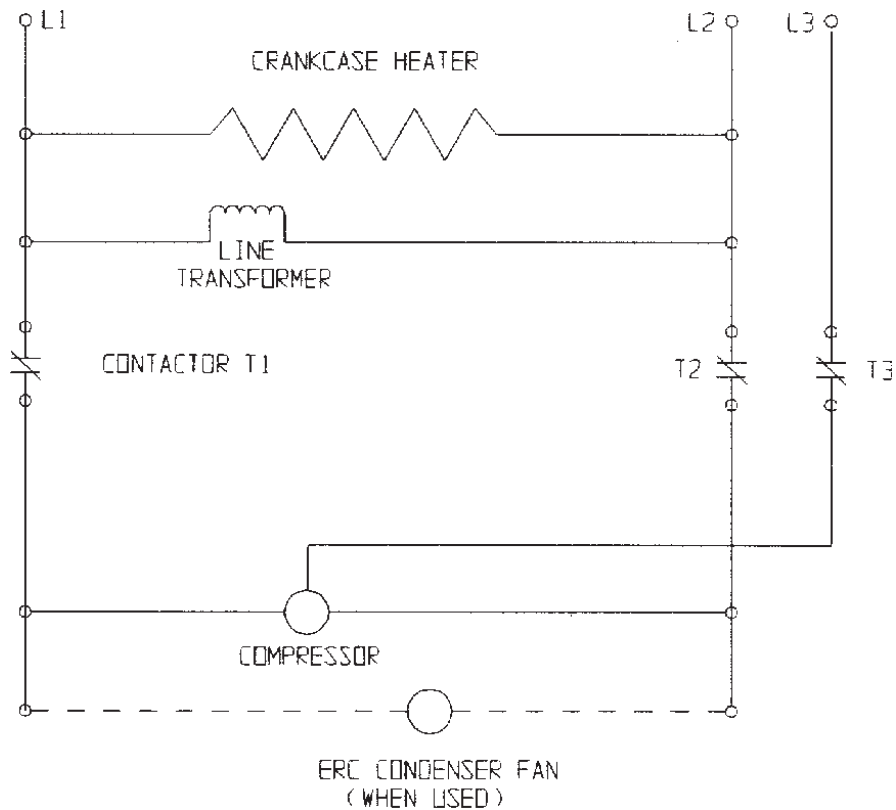
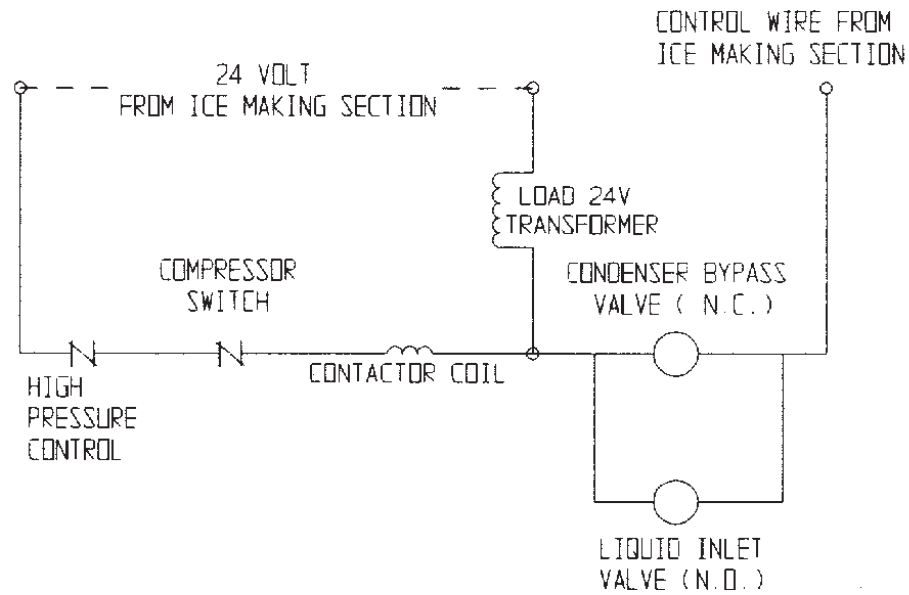


MORE THAN ONE DISCONNECT MEANS MAY BE
REQUIRED TO DISCONNECT ALL POWER TO THIS UNIT.

August 2008
Page 21

EH330 and EH430 Wiring Diagrams

CP Three Phase Wiring Diagram



CP Three Phase Schematic Diagram

USE COPPER CONDUCTORS ONLY



MORE THAN ONE DISCONNECT MEANS MAY BE
REQUIRED TO DISCONNECT ALL POWER TO THIS UNIT.