

C2648 Service Parts

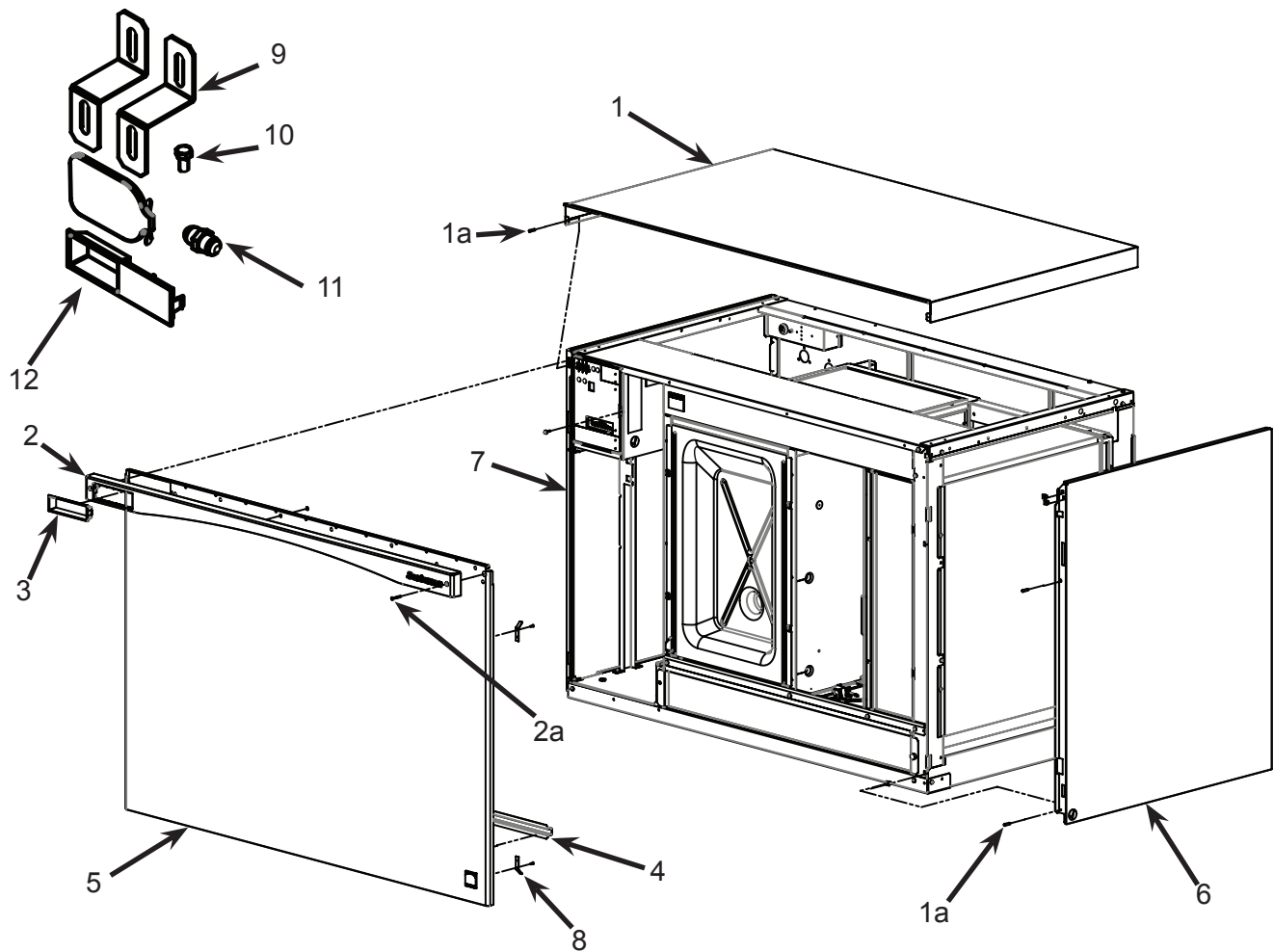
This is the service parts list for the C2648.
In December 2014 it was revised to a D series, which
designates a new cabinet.

Contents

Exterior Panels - A Series	Page 2
Exterior Panels - D Series	Page 3
Cabinet Structure.....	Page 4
Interior Components, Left View	Page 5
Interior Components, Right View.....	Page 6
Refrigeration System	Page 7
Freezing Compartment.....	Page 8
Control Box Components	Page 9
PRC241 Condenser	Page 10
Schematic Diagram- A Series	Page 11
Wiring Diagram- A Series.....	Page 12
Schematic Diagram- D Series.....	Page 13
Wiring Diagram- D Series	Page 14

C2648 Service Parts

Exterior Panels - A Series



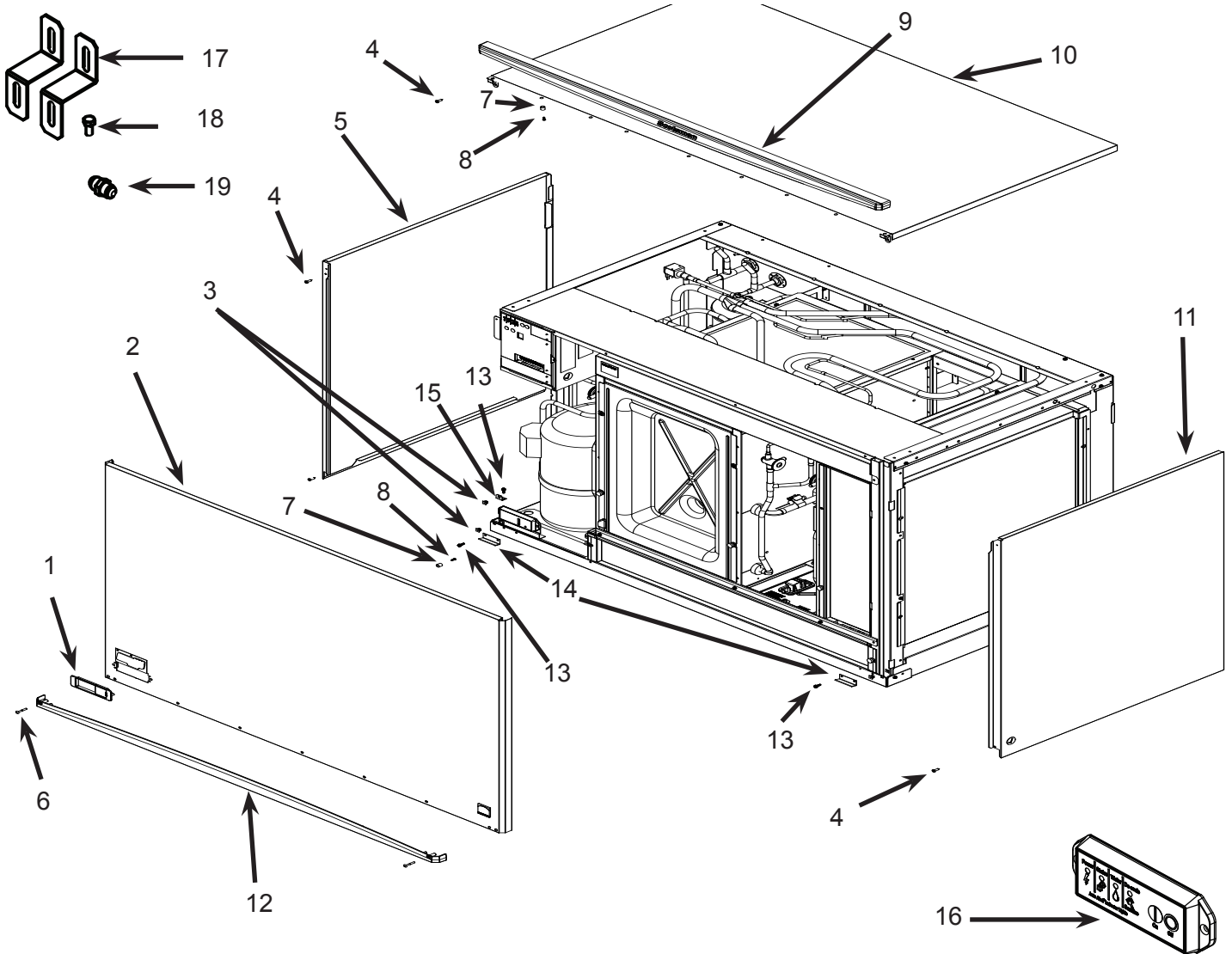
Item Number	Part Number	Description
1	A39777-021	Top panel
1a	03-1404-12	Screw
2	02-4214-03	Trim strip
3	02-4284-01	Bezel
4	A39045-001	Stiffener
5	A39740-021	Front panel assembly, includes items 2, 2a, 3, 4, and 8.
6	A39741-021	Right side panel
7	A39776-021	Left side panel
8	A39751-001	Side panel bracket

Items shipped in installation package:

10	03-1405-13	Screw
----	------------	-------

C2648 Service Parts

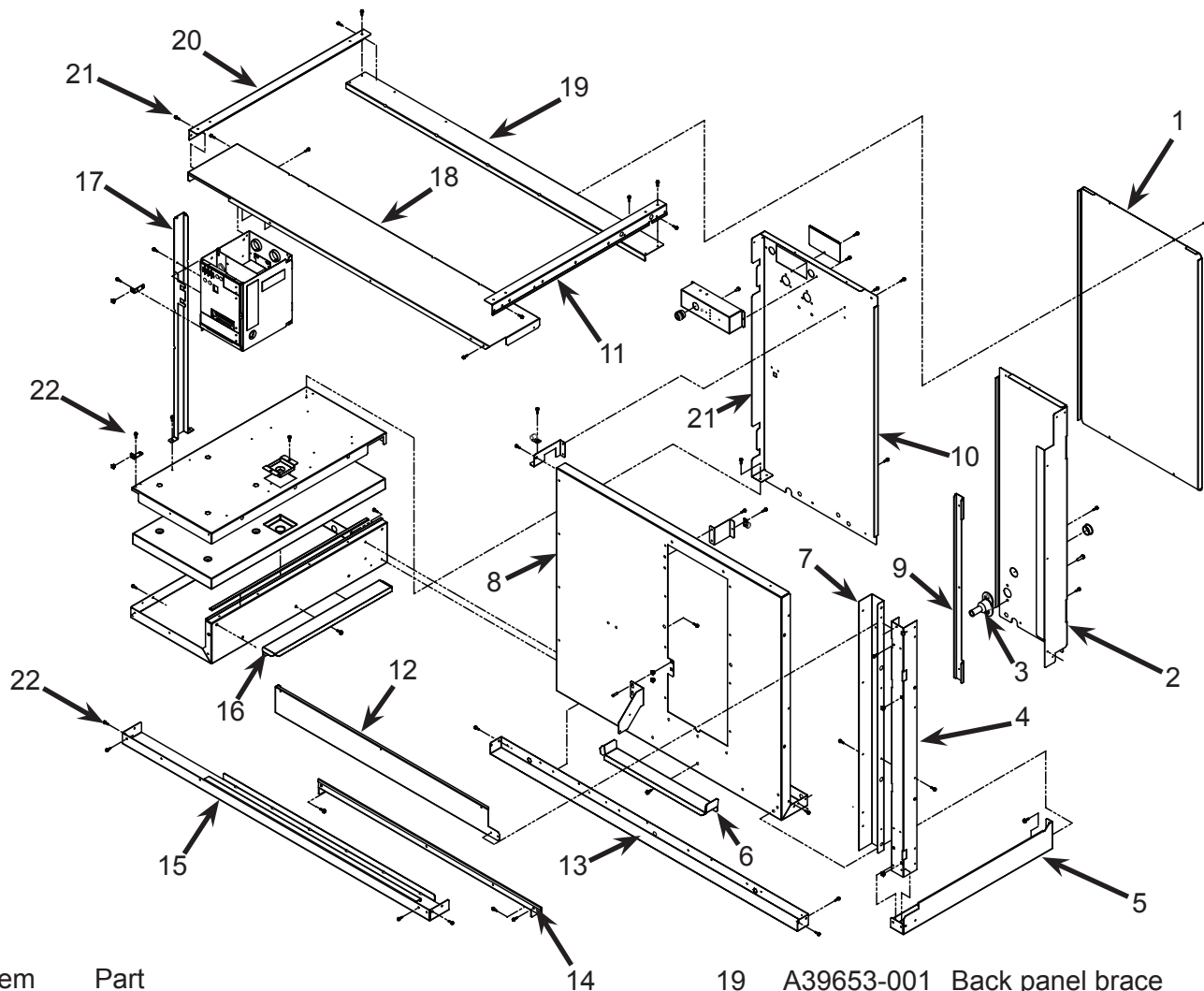
Exterior Panels - D Series



Item Number	Part Number	Description	Item Number	Part Number	Description
1	02-4821-02	Bezel, Includes Standard Door	13	03-3868-02	Screw #8 X 1/2
1A	02-4822-01	Standard Bezel Door (Door Only)	14	A40409-001	Support
1B	02-4822-02	Secure Bezel Door (Door Only)	15	A40408-001	Panel Bracket
2	A40308-035	Front Panel Assembly, Includes Items 1, 20 & 21	16	11-0622-21	Lower Switch Panel W/ Harness
3	03-3804-01	Screw Receptacle	17	A39708-001	Machine Support Bracket
4	03-1410-10	Screw #8 X .50	18	03-1405-13	Hex Cap Screw 5/16-18 X 5/8
5	A40392-001	Left Side Panel	19	16-1036-01	Water Inlet Fitting
6	03-1735-03	Screw			
7	02-4824-01	Spacer			
8	03-3836-02	Screw #8 3/8			
9	02-4819-03	Top Trim Strip			
10	A40309-024	Top Panel			
11	A40391-001	Right Side Panel			
12	02-4820-03	Bottom Trim Strip			

C2648 Service Parts

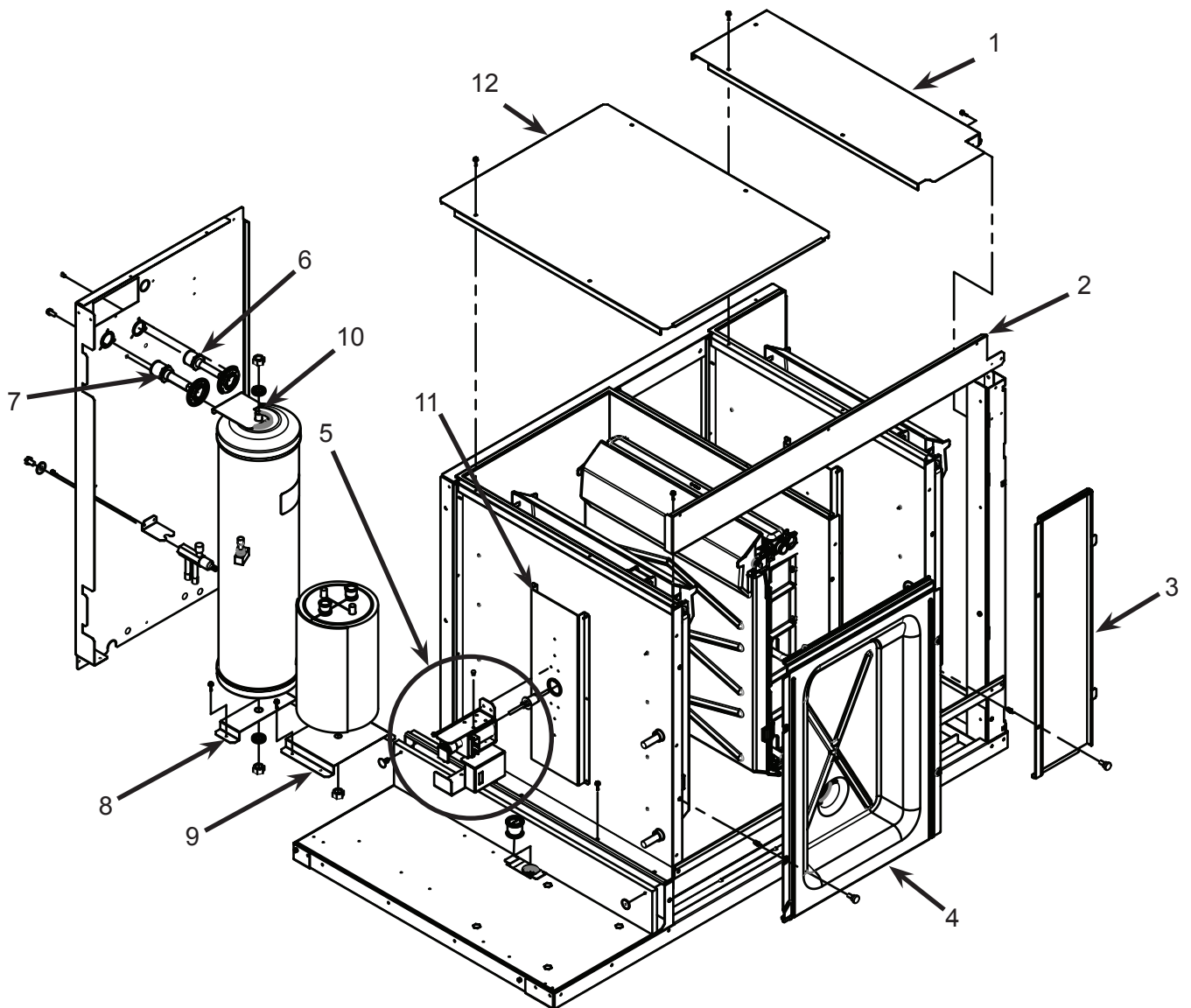
Cabinet Structure



Item Number	Part Number	Description	Part Number	Description
1	A39703-001	Back panel, ctr	19	A39653-001 Back panel brace
2	A39642-001	Back panel, rt	20	A39652-001 Support bracket
3	02-3692-21	Drain fitting	21	A39641-001 Back panel
4	A39639-001	Right support, outer	22	03-3868-02 Screw, phillips hex
5	A39635-001	Base, right		
6	A39659-001	Sump bracket, back		
7	A39640-001	Right support, inner		
8	A39638-001	Back wall		
9	A39779-001	Rt side panel bracket		
10	A39641-001	Back panel, left		
11	A39652-001	Support bracket		
12	A39651-001	Evap top support		
13	A39634-001	Back brace		
14	A39649-001	Evap support		
15	A39636-001	Front brace		
16	A39658-001	Sump support, left		
17	A39650-001	Control box support		
18	A39646-001	Front support bracket		

C2648 Service Parts

Interior Components, Left View

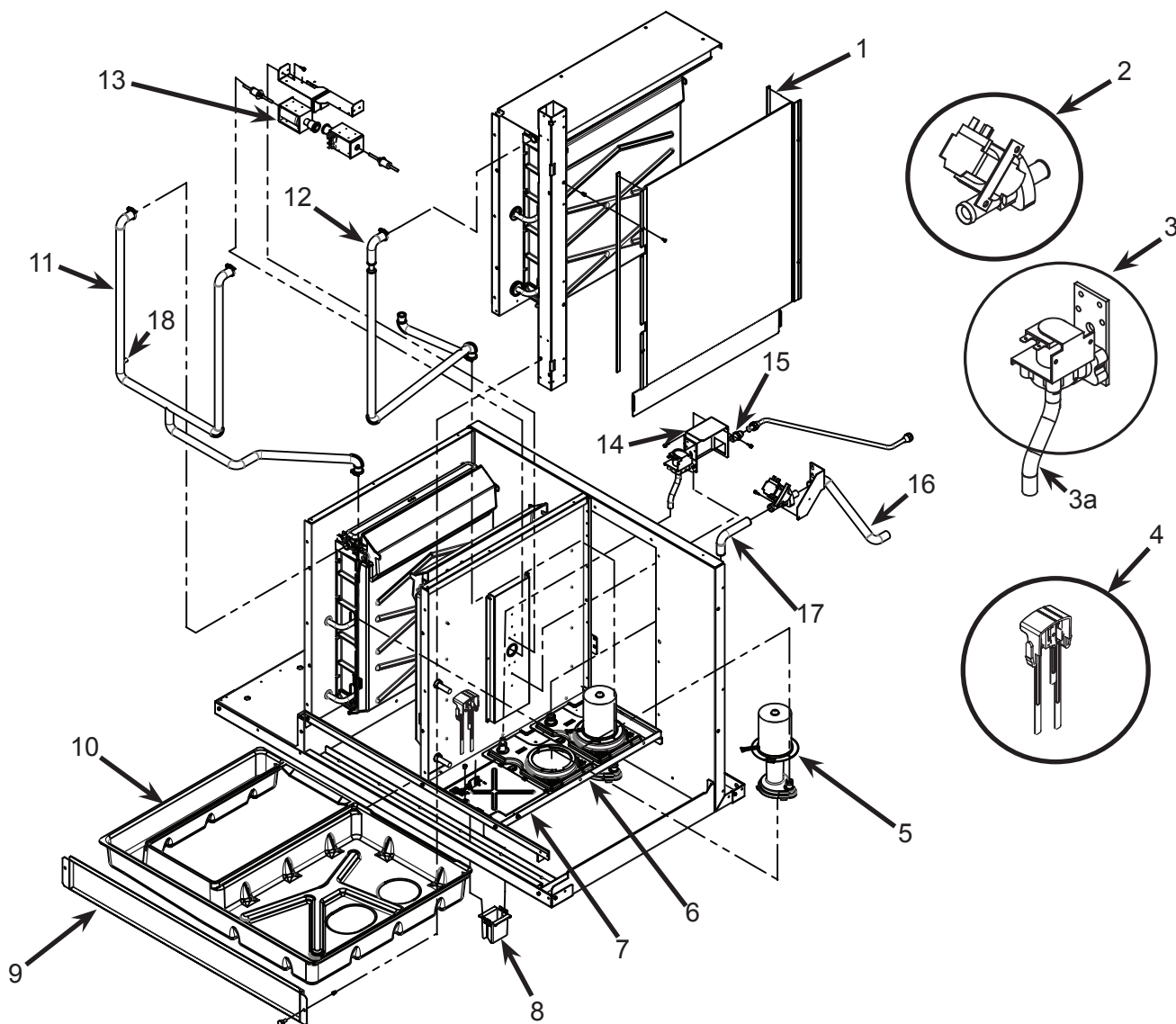


Item Number	Part Number	Description
1	A39704-001	Evap top, 1 plate
2	A39651-001	Evap top support
3	A39705-001	Evap cover, right
4	02-4184-01	Evap cover, center
5	12-3060-22	Harvest assist*
6	16-0850-01	Quick connect, 1/2
7	16-0850-05	Quick connect, 5/8
8	A37212-001	Receiver bracket bottom
9	A37948-001	Accumulator bracket
10	A37211-001	Receiver bracket top
11	A39657-001	HA mounting bracket
12	A39706-001	Evap top, 2 plate

* To change the two right harvest assist solenoids to 12-3060-22, replace them both at the same time.

C2648 Service Parts

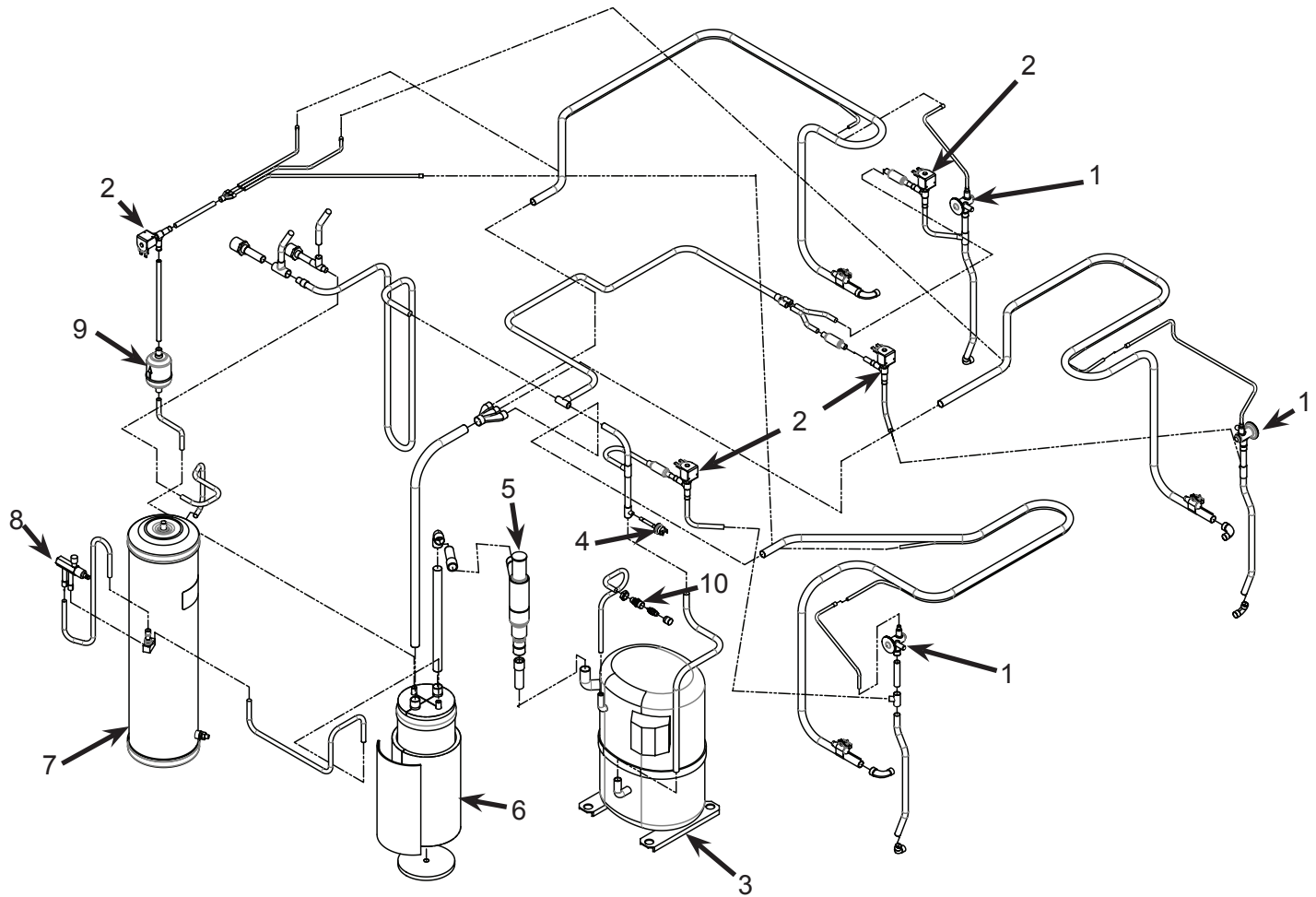
Interior Components, Right View



Item Number	Part Number	Description	Item Number	Part Number	Description
1	A39778-001	Right side liner	11	02-4552-01	Hose, 2 plates
2	11-0514-01	Purge valve	12	02-4553-01	Hose, 1 plate
3	12-2922-03	Inlet water sol valve	13	A39647-001	Harv assist bracket
4	A39829-001	Water level sensor	14	A39808-001	Inlet water vlve bracket
5	12-2920-22	Water pump	15	16-0355-00	Coupling half
6	02-4177-04	Pump bracket, front	16	A39655-002	Drain hose, out
7	02-4177-05	Pump bracket, back	17	A39655-001	Drain hose, in
8	02-4166-02	Sump cover	18	11-0572-21	Temp sensor set
9	02-4332-01	Probe cover			
10	A39702-001	Sump cover, front			
	02-4554-01	Sump			

C2648 Service Parts

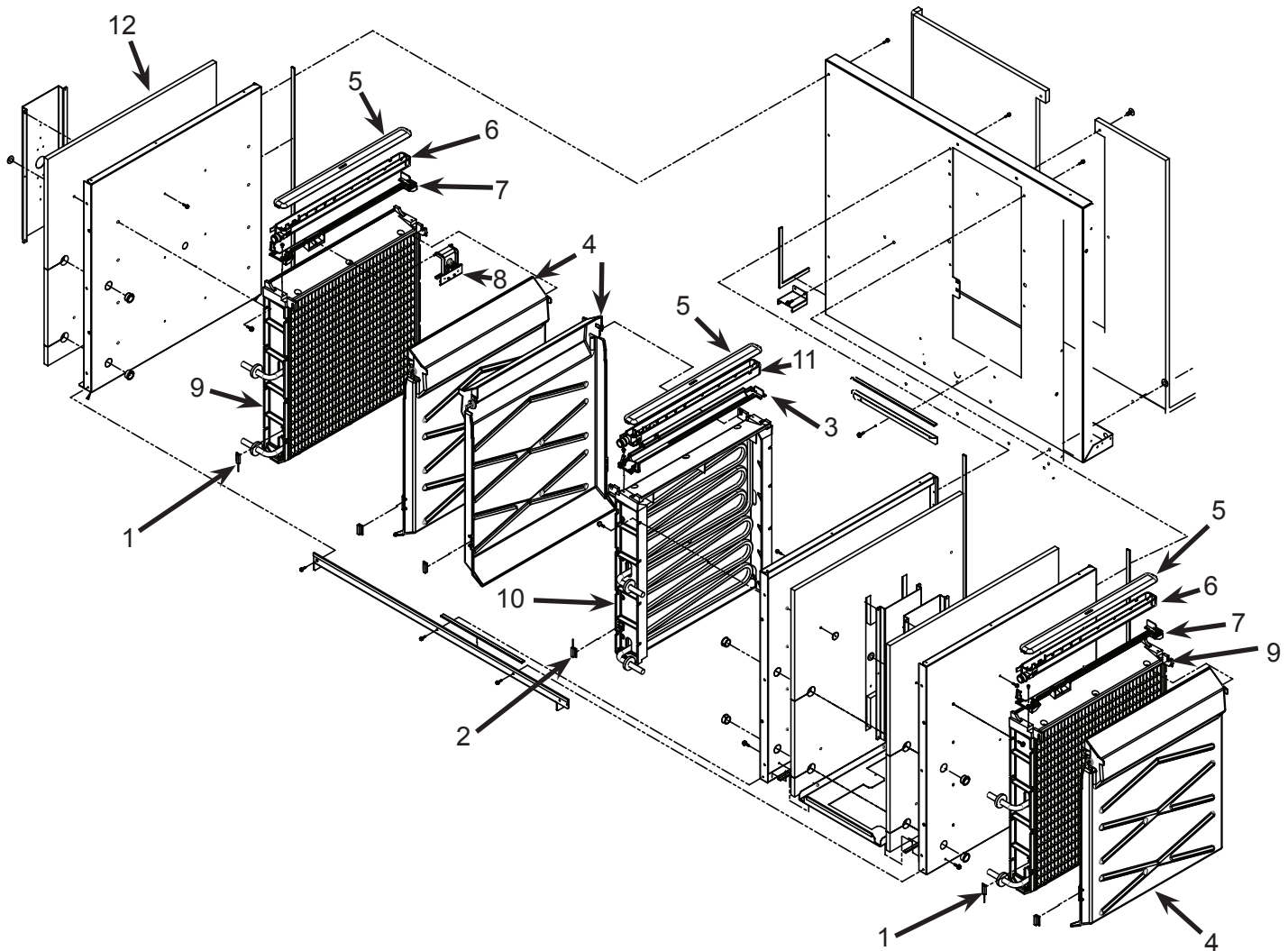
Refrigeration System



Item Number	Part Number	Description
1	16-1142-02	TXV
	19-0599-06	Insulation for TXV
2	11-0591-01	Hot gas valve / liquid line valve, no coil
2a	11-0590-02	Coil for HGV
3	18-8923-23	Compressor, 3 phase. Overload is internal. CS27K6E-TF5-276
4	11-0501-22	High pressure cut out
5	16-1096-23	OPR valve
6	16-1122-21	Accumulator with insulation
7	16-1177-01	Receiver
8	16-1030-01	Receiver outlet valve
9	02-4557-01	Dryer
10	16-1137-01	Access valve seat
	16-1139-01	Access valve core
	16-1140-01	Access valve cap

C2648 Service Parts

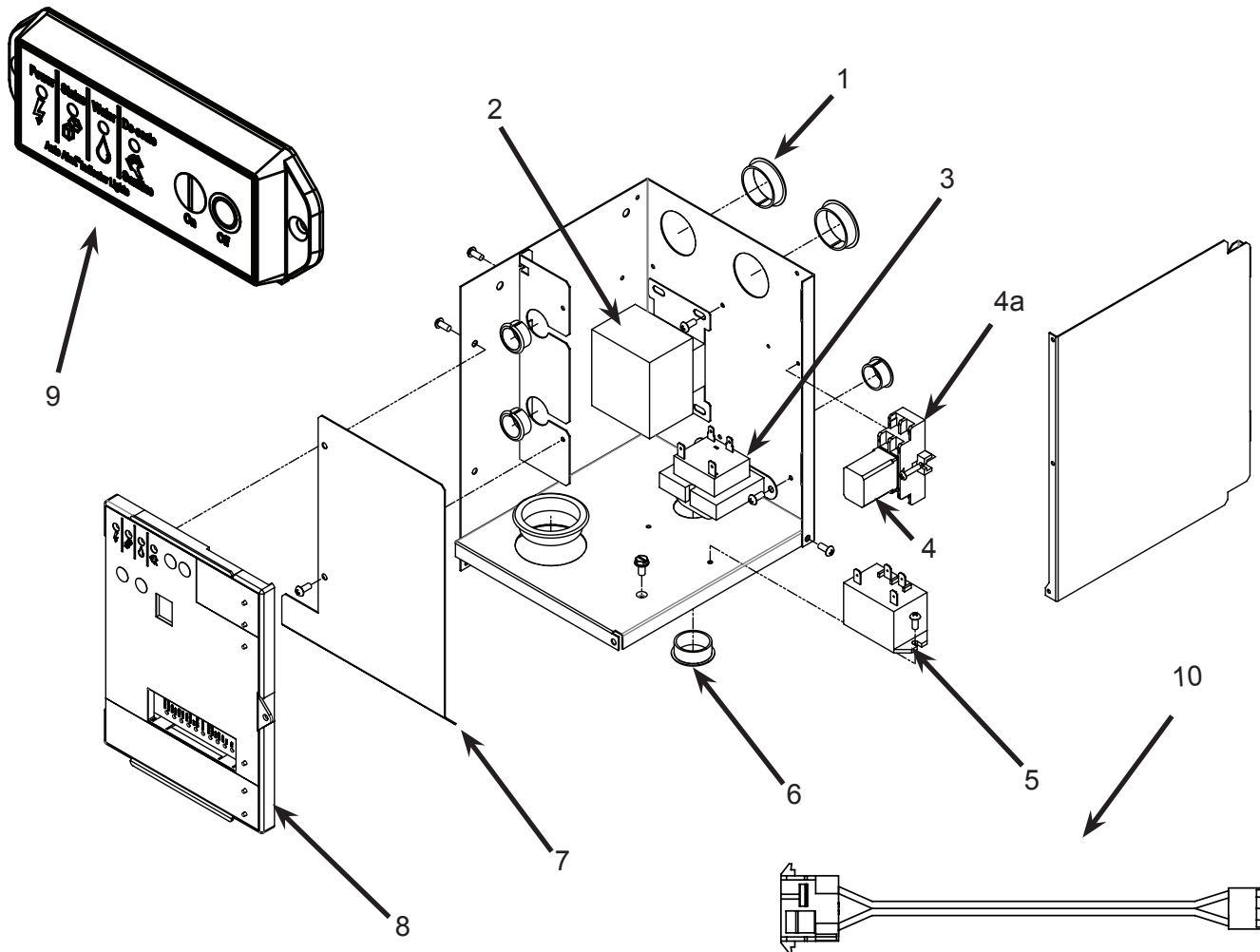
Freezing Compartment



Item Number	Part Number	Description
1	11-0563-06	Curtain switch
2	11-0563-03	Curtain switch
3	02-4205-02	Distributor mounting bracket
4	02-4611-21	Curtain, includes magnet
5	02-4065-01	Water distributor cover
6	02-4064-01	Water distributor
7	02-4205-01	Distributor mounting bracket
8	A39031-021	Ice thickness sensor
9	A38628-021	Left & Right evaporator, small cube
	A38628-022	Left & Right evaporator, medium cube
10	A38628-023	Center evaporator, small cube
	A38628-024	Center evaporator, medium cube
11	02-4064-02	Water distributor
12	02-4608-01	Insulation pad

C2648 Service Parts

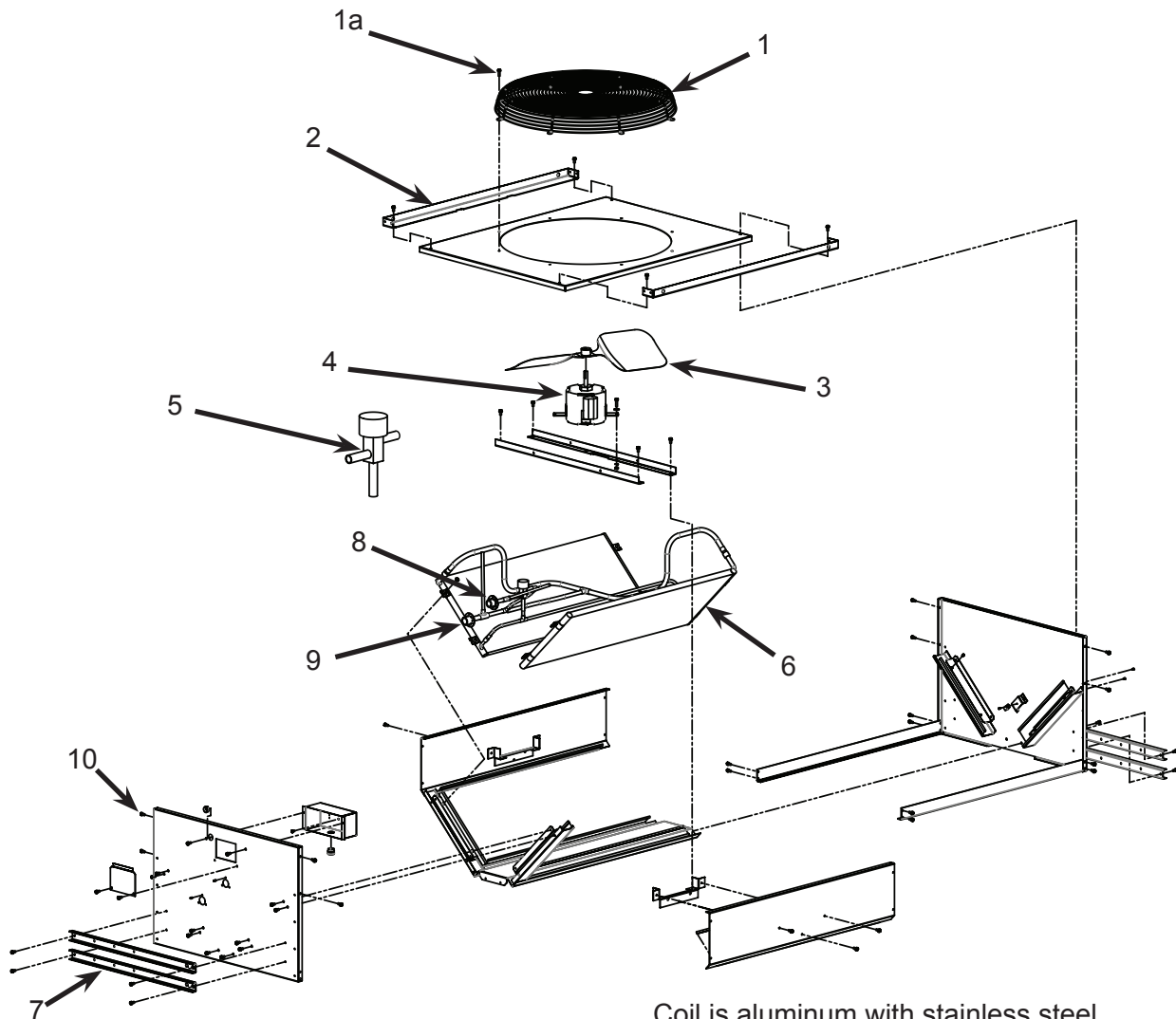
Control Box Components



Item Number	Part Number	Description
1	12-1213-20	Snap bushing
2	12-2533-02	Contactor
3	12-2924-02	Transformer
4	12-2949-03	Relay
4a	12-2949-02	Base
5	12-3031-01	High capacity relay
6	12-1213-11	Snap bushing
7	A39216-001	Barrier
8	11-0621-21	Controller, fits all Prodigy cubers
	11-0550-28	Controller, thru C series
	02-4076-01	Control box door
	02-4189-01	Overlay label
9	11-0622-21	Lower Switch Panel W/ Harness
10	12-3030-01	Harness for the 3rd Curtain Switch

C2648 Service Parts

PRC241 Condenser

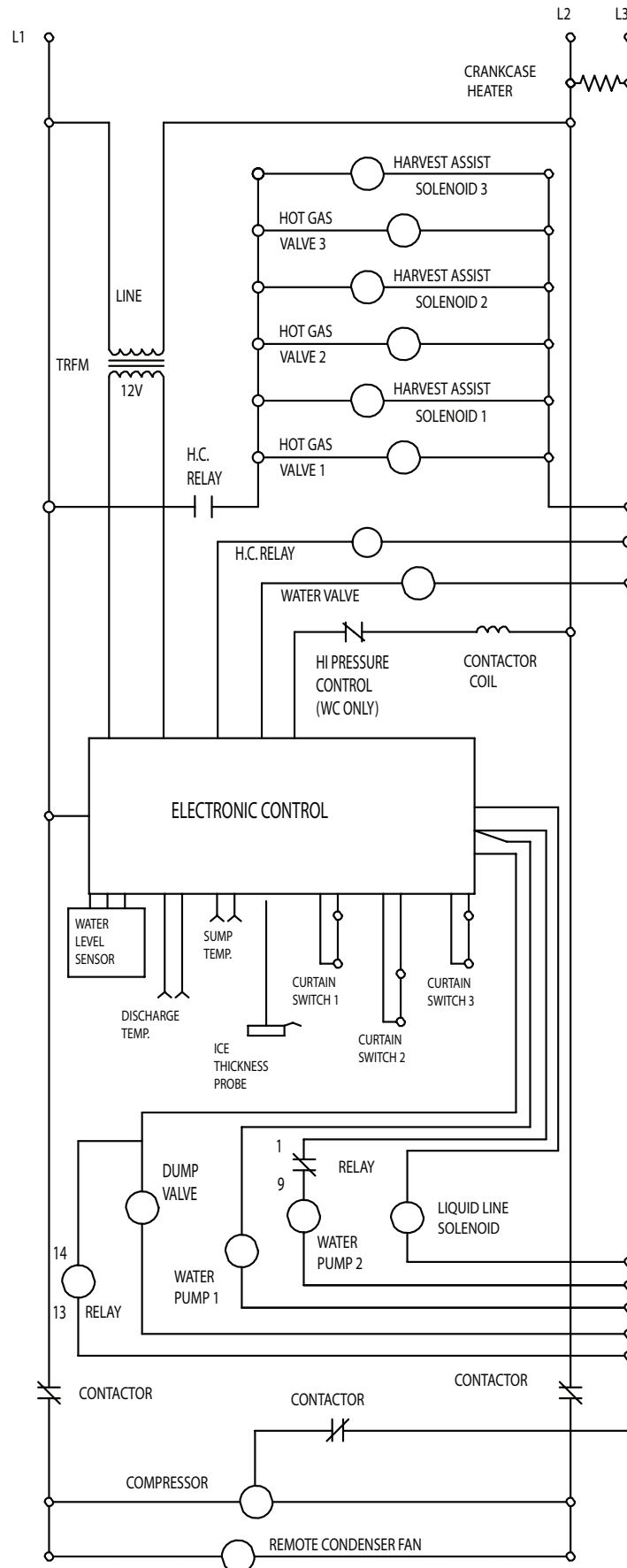


Coil is aluminum with stainless steel copper stubs. Do not overheat

Item Number	Part Number	Description
1	02-3770-01	Fan Guard
1a	03-1645-03	Screw
2	A39756-001	Leg brace
3	18-8820-01	Fan blade
4	12-2717-01	Fan motor
	18-8878-01	Fan motor capacitor
5	11-0422-22	Head pressure valve
6	18-8945-22	Condenser coil
7	A37169-001	Leg
8	16-0850-01	Liquid quick connect
9	16-0850-05	Disch. quick connect
10	03-1645-01	Screw, fits legs & other

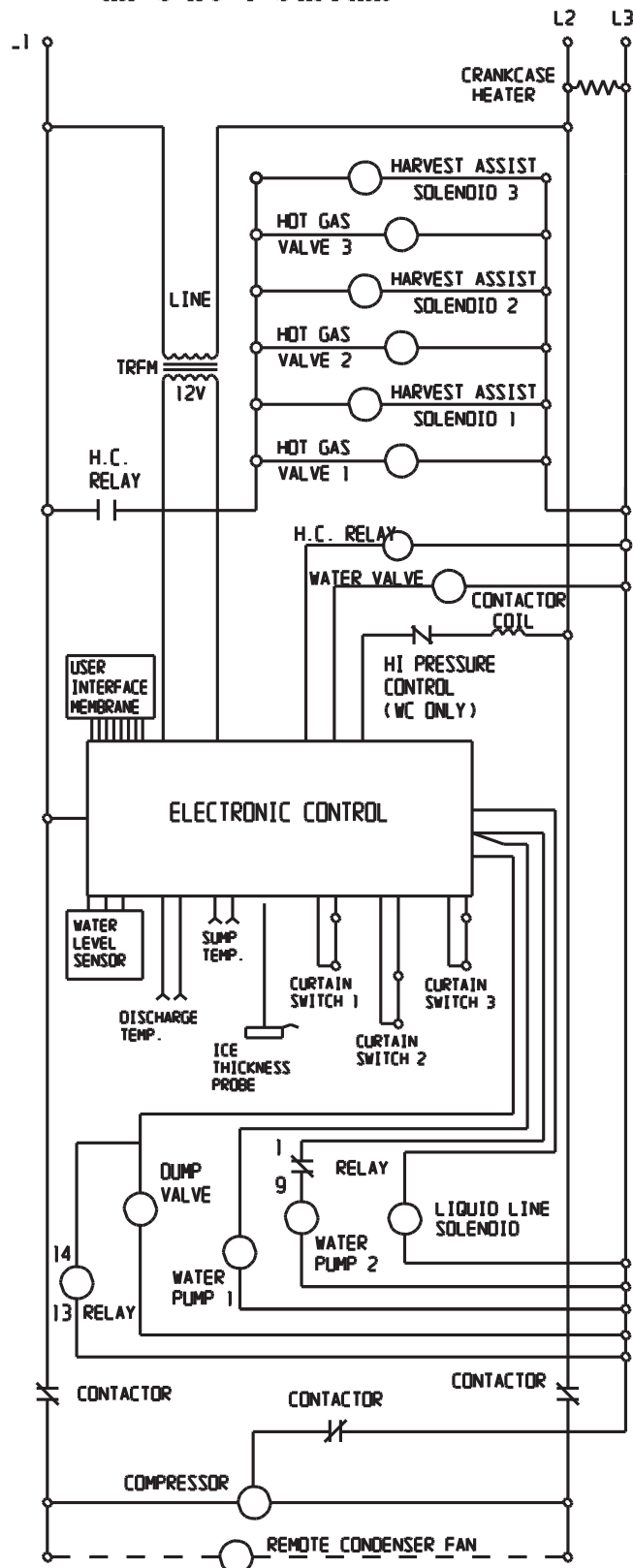
C2648 Service Parts

Schematic Diagram- A Series



Schematic Diagram- D Series

⚠ DASHED LINES INDICATE FIELD WIRING WHICH MUST BE INSTALLED IN ACCORDANCE WITH THE NATIONAL ELECTRICAL CODE AND ALL STATE AND LOCAL CODES.



Wiring Diagram- D Series

17-3544-01

USE COPPER CONDUCTORS ONLY

