

# CME1856W Service Parts

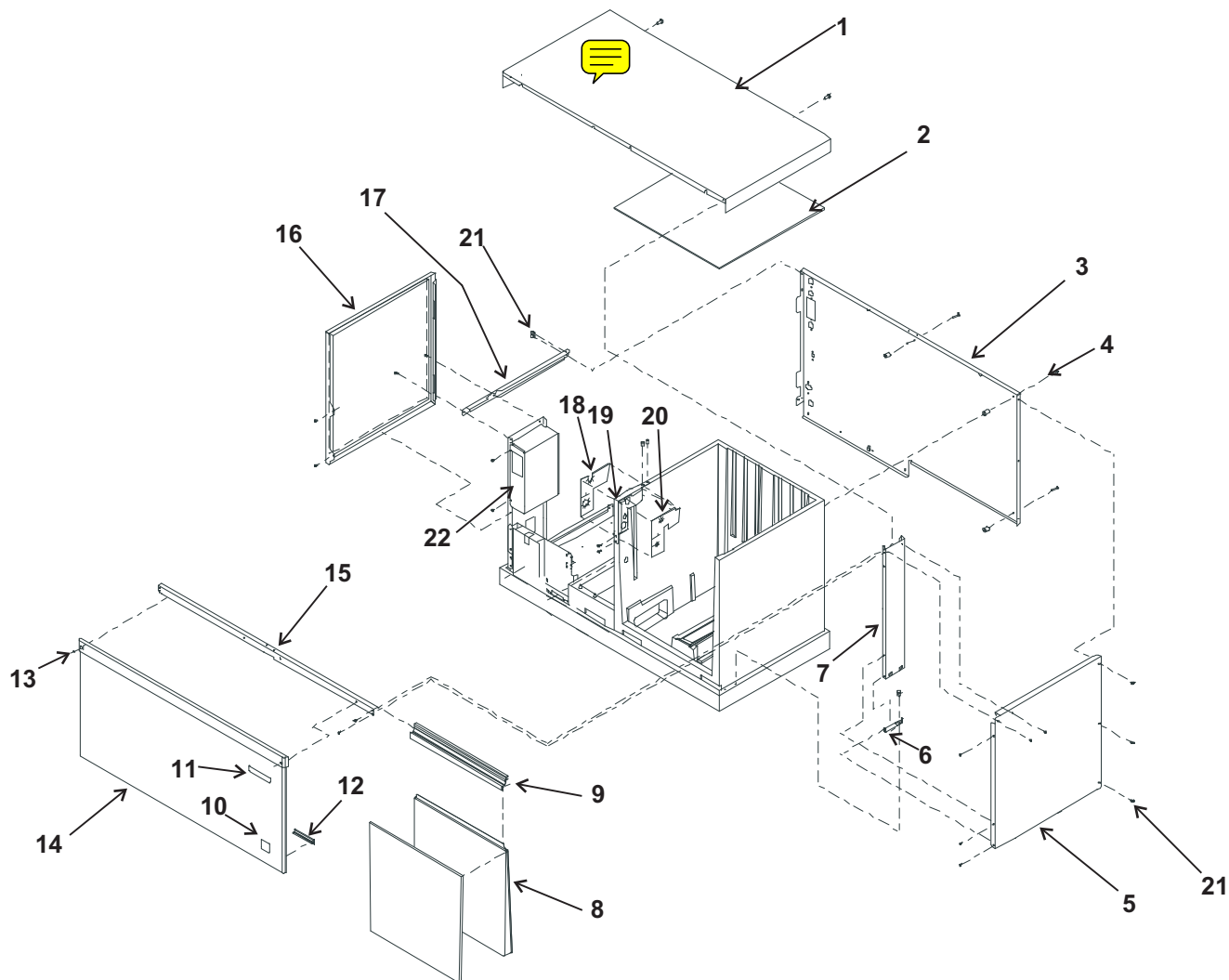
This parts list contains the part numbers and description of the replacement parts available for this model. To avoid costly and time consuming errors, double check the model and voltage before ordering a part.

## TABLE OF CONTENTS

<b>Cabinet</b> . . . . .	PAGE 2
Water System . . . . .	PAGE 3
Refrigeration . . . . .	PAGE 4
Electrical . . . . .	PAGE 5
BH900 Ice Storage Bin . . . . .	PAGE 6
BH1650 Ice Storage Bin . . . . .	PAGE 7
Kit Parts . . . . .	PAGE 8
Single Phase Wiring Diagram . . . . .	PAGE 9
Single Phase Schematic Diagram . . . . .	PAGE 10
Three Phase Wiring Diagram . . . . .	PAGE 11
Three Phase Schematic . . . . .	PAGE 12

# CME1856W Service Parts

## Cabinet



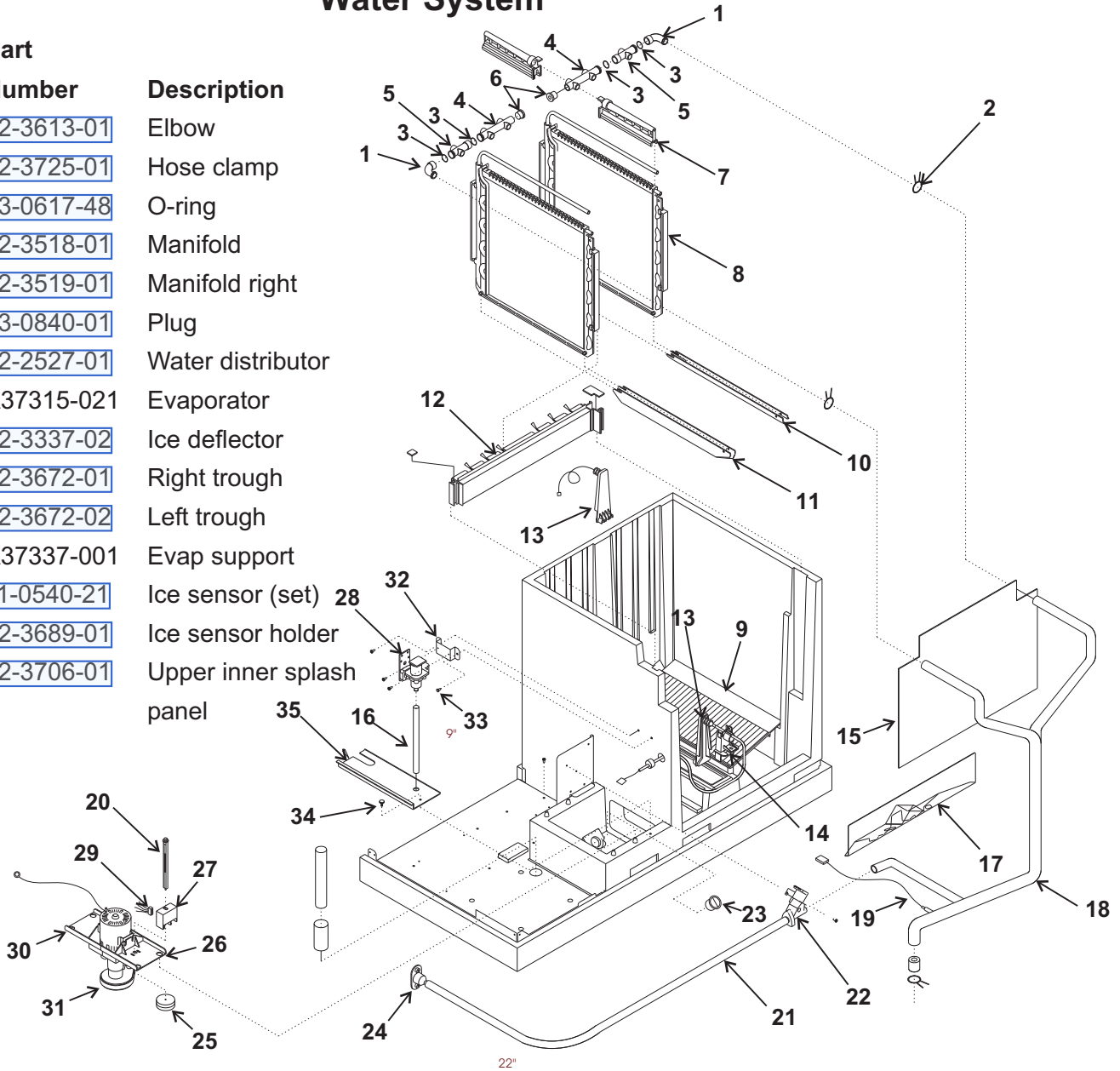
Item Number	Part Number	Description	Item Number	Part Number	Description
1	<a href="#">02-3823-21</a>	Top panel, plastic	14	A37489-031	Front panel, SS, includes items 13 and 11
2	<a href="#">02-3686-01</a>	Insulation	15	A37195-001	Channel, front top
3	A37671-001	Back panel	16	A37198-002	Left side panel, SS
4	<a href="#">03-1404-37</a>	Screw	17	A37365-001	Left side channel
5	A37668-001	Right side panel, SS	18	<a href="#">02-3696-03</a>	Left grommet
6	A37194-001	Right bottom channel	19	A37216-001	Bracket
7	A37213-001	Right side support	20	<a href="#">02-3696-02</a>	Right grommet
8	<a href="#">02-3702-21</a>	Evaporator cover & ins	21	<a href="#">03-1531-01</a>	Screw
9	<a href="#">02-3701-01</a>	Cover retainer	22	A37340-001	Control box cover
10	<a href="#">15-0792-02</a>	CM <sup>3</sup> emblem			
11	<a href="#">15-0808-03</a>	Emblem			
12	<a href="#">02-3699-01</a>	Panel support clip			
13	<a href="#">03-1735-01</a>	Front panel screw			

# CME1856W Service Parts

## Water System

Item Number	Part Number	Description
-------------	-------------	-------------

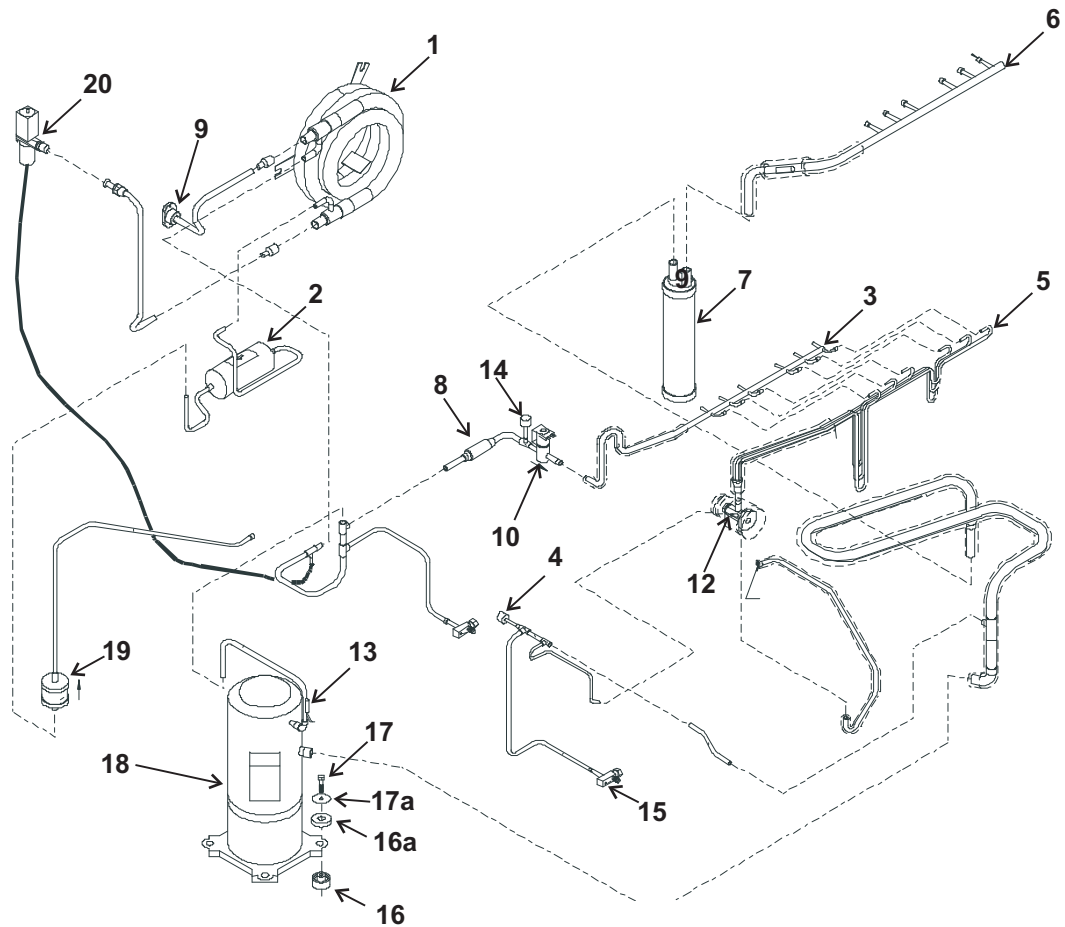
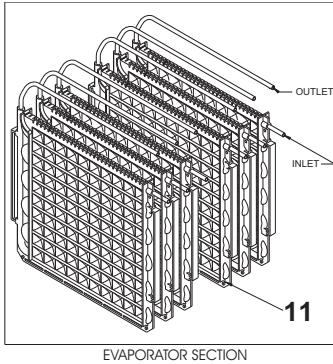
1	<a href="#">02-3613-01</a>	Elbow
2	<a href="#">02-3725-01</a>	Hose clamp
3	<a href="#">13-0617-48</a>	O-ring
4	<a href="#">02-3518-01</a>	Manifold
5	<a href="#">02-3519-01</a>	Manifold right
6	<a href="#">13-0840-01</a>	Plug
7	<a href="#">02-2527-01</a>	Water distributor
8	<a href="#">A37315-021</a>	Evaporator
9	<a href="#">02-3337-02</a>	Ice deflector
10	<a href="#">02-3672-01</a>	Right trough
11	<a href="#">02-3672-02</a>	Left trough
12	<a href="#">A37337-001</a>	Evap support
13	<a href="#">11-0540-21</a>	Ice sensor (set)
14	<a href="#">02-3689-01</a>	Ice sensor holder
15	<a href="#">02-3706-01</a>	Upper inner splash panel



16	<a href="#">13-0674-02</a>	Tube, order 1 unit	27	<a href="#">11-0539-51</a>	Water level sensor
17	<a href="#">02-3680-01</a>	Lower inner splash panel	28	<a href="#">12-2666-01</a>	Water solenoid valve
18	<a href="#">02-3660-01</a>	Water discharge hose		<a href="#">16-0355-00</a>	Coupling half
19	<a href="#">11-0515-21</a>	Temp sensor set	29	<a href="#">12-2665-01</a>	Harness for water sensor
20	<a href="#">02-3383-06</a>	Float stem	30	<a href="#">02-3388-05</a>	Pump bracket
21	<a href="#">13-0674-06</a>	Drain hose, order 2 units	31	<a href="#">12-2582-21</a>	Water pump
22	<a href="#">11-0514-01</a>	Purge valve	32	<a href="#">A37204-001</a>	Bracket
23	<a href="#">02-3703-01</a>	Drain plug	33	<a href="#">03-1404-18</a>	Screw
24	<a href="#">02-3692-21</a>	Drain fitting	34	<a href="#">03-1691-01</a>	Nylon screw
25	<a href="#">02-3341-01</a>	Float	35	<a href="#">02-3534-01</a>	Reservoir cover
26	<a href="#">02-3388-04</a>	Pump bracket			

# CME1856W Service Parts

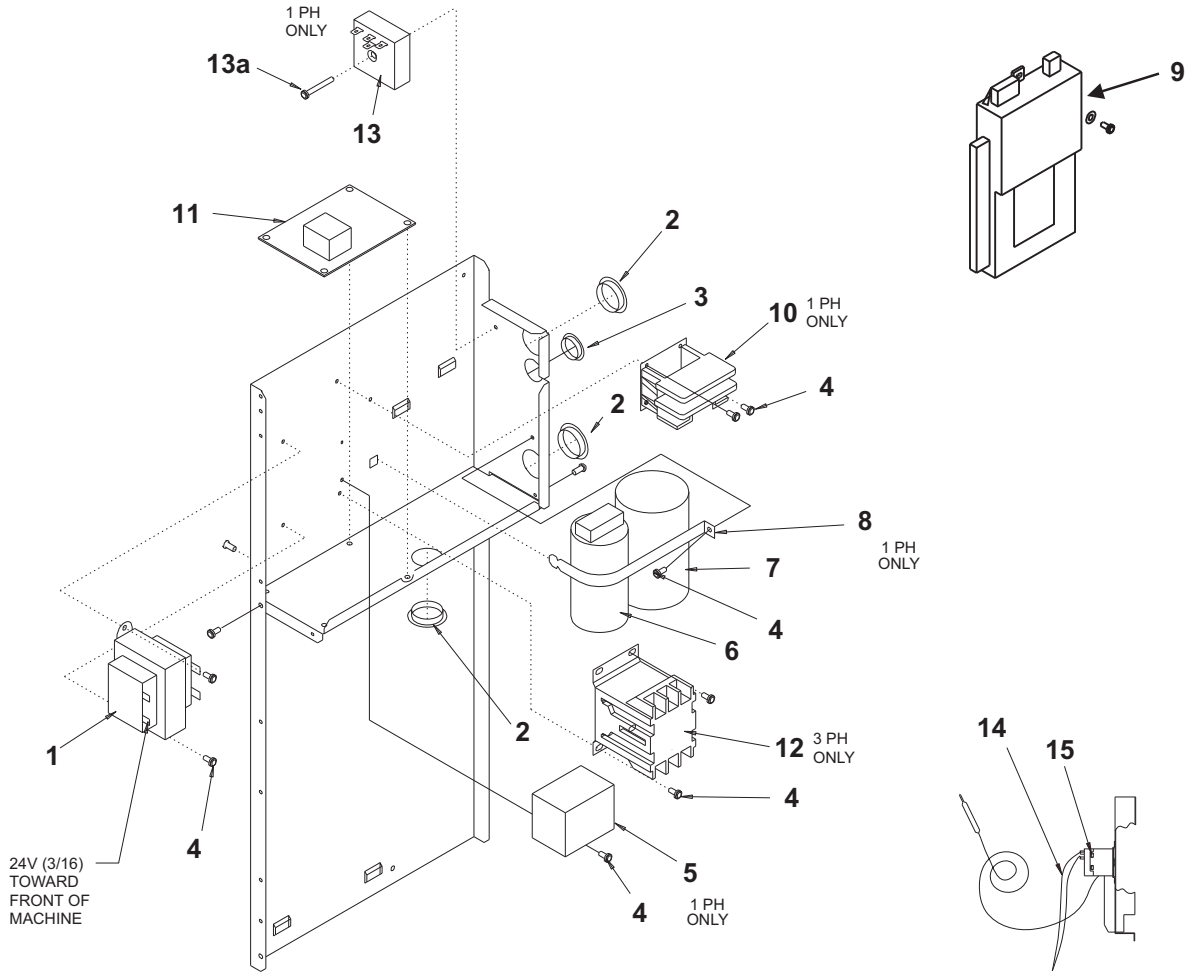
## Refrigeration



Item Number	Part Number	Description	Item Number	Part Number	Description
1	<a href="#">18-8865-21</a>	Water cooled condenser	13	<a href="#">11-0515-21</a>	Temp sensor set
2	<a href="#">02-2628-02</a>	Receiver	14	<a href="#">11-0501-23</a>	Hi pressure cut out
3	<a href="#">16-1050-01</a>	Hot gas header	15	<a href="#">16-0832-20</a>	Suction access valve
4	<a href="#">11-0502-21</a>	Low pressure cut out		<a href="#">16-0832-03</a>	Port cap
5	A37405-001	Distributor and tubes		<a href="#">16-0832-02</a>	Stem cap
6	<a href="#">16-1055-01</a>	Suction manifold	16	<a href="#">03-1729-01</a>	Solid Mount
7	<a href="#">16-1031-21</a>	Accumulator		<a href="#">03-3843-01</a>	Rubber grommet
7a	A37209-001	Accumulator bracket	16a	<a href="#">03-1729-03</a>	Rubber pad for sold mount
8	<a href="#">16-1063-03</a>	Strainer for HGV	17	<a href="#">03-1405-20</a>	Bolt
9	A31828-003	Drain fitting	17a	<a href="#">03-1729-02</a>	Washer for solid mount
10	<a href="#">11-0507-22</a>	Hot gas valve w/coil		<a href="#">03-1407-07</a>	Washer for rubber grommet
	<a href="#">12-2719-23</a>	Hot gas valve coil only		<a href="#">18-2300-26</a>	Sleeve for rubber grommet
11	A37315-021	Evaporator	18	<a href="#">18-8821-21</a>	Compressor, 60 Hz, single phase
12	<a href="#">16-1041-21</a>	TXV, AAE 2 5Z		<a href="#">18-8821-22</a>	Compressor, 60 Hz, 3 phase
	<a href="#">02-3792-01</a>	Insulation for TXV		<a href="#">18-8828-01</a>	crankcase heater for 3 phase
					Replacement compressors include a dryer
			19	<a href="#">02-3319-02</a>	Dryer
			20	<a href="#">11-0478-02</a>	Water reg valve

# CME1856W Service Parts

## Electrical

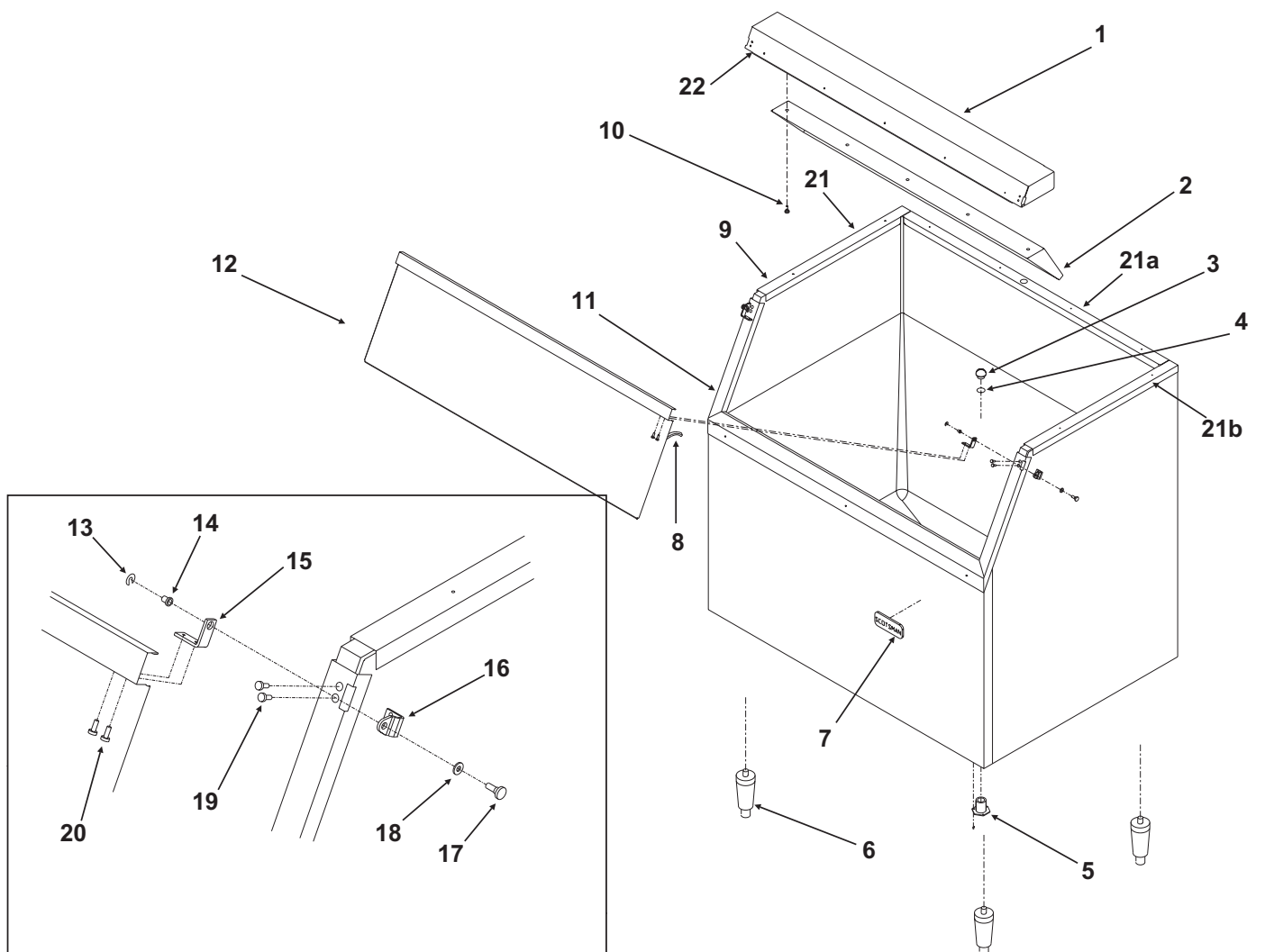


Item Number	Part Number	Description
1	A37217-001	Transformer
2	<a href="#">12-1213-11</a>	Snap bushing
3	<a href="#">12-1213-10</a>	Snap bushing
4	<a href="#">03-1531-01</a>	Screw
5	<a href="#">18-1903-55</a>	60 Hz potential relay
6	<a href="#">18-1902-59</a>	Run capacitor
7	<a href="#">18-1901-58</a>	60 Hz start capacitor
8	A37366-001	Strap
9	<a href="#">12-2838-24</a>	Controller
10	<a href="#">12-2595-01</a>	Single phase contactor
11	<a href="#">11-0531-22</a>	Purge valve timer
	<a href="#">03-1727-01</a>	Stand off
12	<a href="#">12-2533-01</a>	3 phase contactor
13	<a href="#">11-0530-01</a>	Time delay relay
13a	<a href="#">03-1531-10</a>	Screw

Item Number	Part Number	Description
14	<a href="#">12-2701-01</a>	Bin thermo harness
15	<a href="#">11-0521-21</a>	Bin thermostat
Not Shown:		
	<a href="#">02-3740-01</a>	Thermostat bracket
	<a href="#">03-1675-03</a>	3 pronged knob
	<a href="#">12-2708-01</a>	Lo voltage harness
	<a href="#">12-2732-01</a>	Hi voltage harness

# CME1856W Service Parts

## BH900 Ice Storage Bin



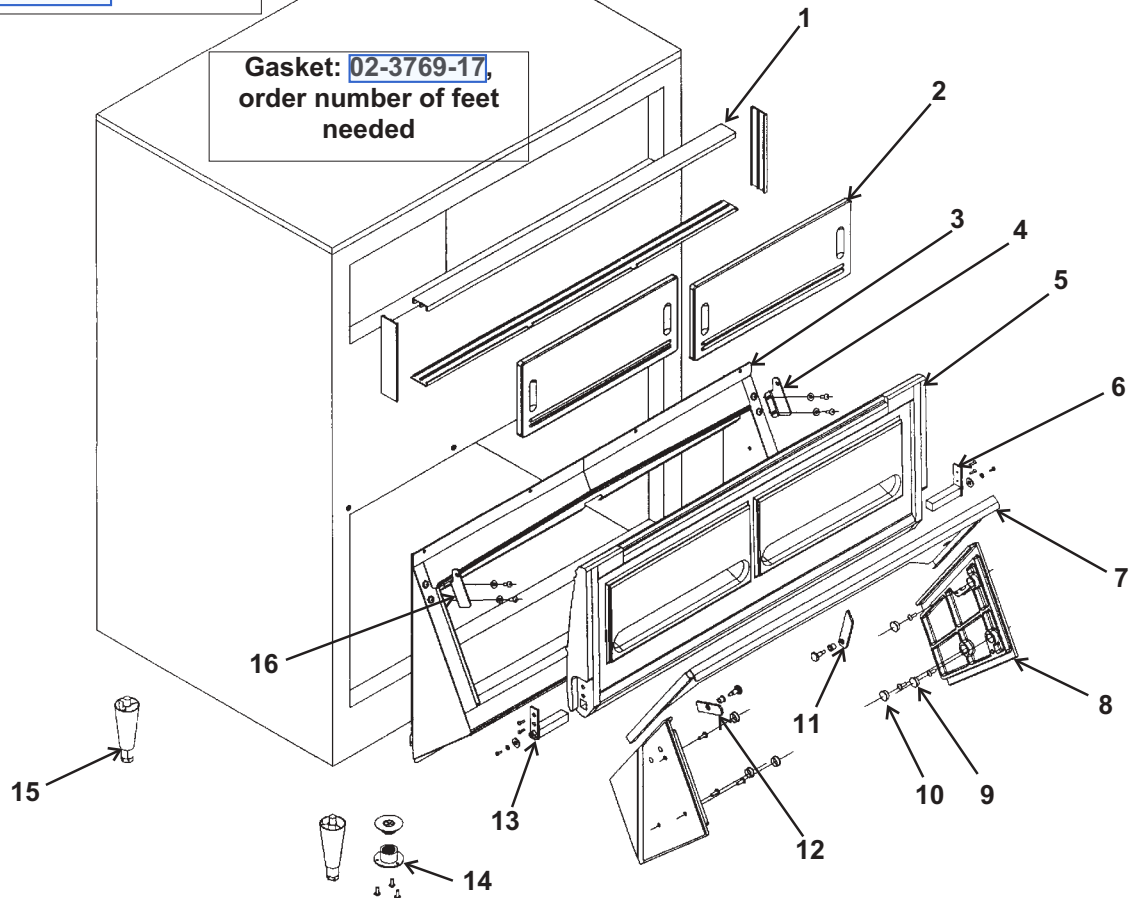
ITEM NUMBER	PARTS NUMBER	DESCRIPTION
1	A35322-001	Canopy Assembly
2	A35152-001	Ice Baffle
3	<a href="#">02-2809-01</a>	Drain Top
4	<a href="#">13-0617-11</a>	O-ring
5	<a href="#">02-3201-01</a>	Drain casting
6	KLP2E Leg Kit, Black KLP2S Leg Kit, Nickel Plated	
7	<a href="#">15-0711-01</a>	Emblem
8	<a href="#">13-0595-00</a>	Door gasket (6.25' reg.)
9	<a href="#">19-0503-04</a>	Bin gasket / ft
10	<a href="#">03-0727-11</a>	Baffle screw
11	A35275-001	Door frame assy.
	A37641-021	Door frame, BH900S-C

ITEM NUMBER	PARTS NUMBER	DESCRIPTION
12	A35323-001	Door w/gasket - BH900
13	<a href="#">03-1539-09</a>	"E" ring
14	<a href="#">02-2380-01</a>	Hinge bushing
15	<a href="#">02-3195-01</a>	Door hinge
16	<a href="#">02-3196-01</a>	Bin hinge
17	<a href="#">02-2806-01</a>	Shoulder screw
18	<a href="#">02-2380-02</a>	Spacer
19	<a href="#">03-1403-29</a>	Screw 10-24
20	<a href="#">03-1403-24</a>	Screw 10-24
21	A35280-001	Left bin channel
21a	A35311-001	Back bin channel
21b	A35279-001	Right bin channel
22	<a href="#">02-3202-01</a>	Trim guard

# CME1856W Service Parts

## BH1650 Ice Storage Bin

"Z" Brackets are used when attaching CME1356 or CME1656 to bin. Attaching screw pn: [03-1645-01](#)

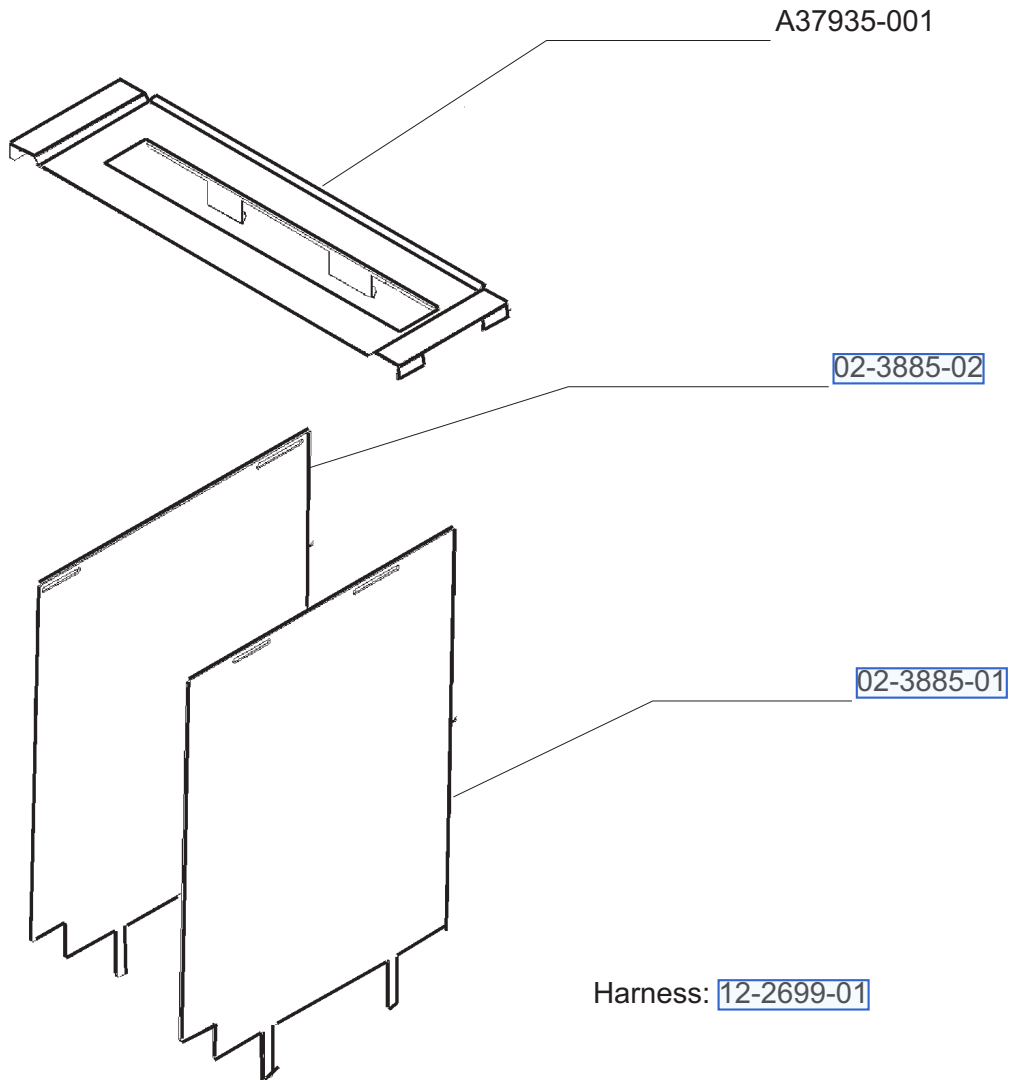


Item Number	Part Number	Description	Item Number	Part Number	Description
1	<a href="#">02-3769-02</a>	Track	12	<a href="#">02-3769-15</a>	Ice gate retainer
2	<a href="#">02-3769-16</a>	Window	13	<a href="#">02-3769-06</a>	Left hinge
3	<a href="#">02-3769-04</a>	Lower frame assembly	14	<a href="#">02-3769-01</a>	Plastic drain
4	<a href="#">02-3769-08</a>	Left and right hinges	15	KLP2S	Legs
5	<a href="#">02-3769-05</a>	Door with door hinges	Not Illustrated:		
6	<a href="#">02-3769-07</a>	Right hinge		<a href="#">02-3769-18</a>	Probe tool
7	<a href="#">02-3769-09</a>	Ice gate		<a href="#">02-3769-19</a>	Plastic Ice shovel.
8	<a href="#">02-3769-12</a>	End plate guide (pair)		<a href="#">02-3775-01</a>	Z brackets
9	<a href="#">02-3769-13</a>	Screws for end plat			
10	<a href="#">02-3769-14</a>	Plugs for end plate			
11	<a href="#">02-3769-10</a>	Catch for ice gate			

# CME1856W Service Parts

## Kit Parts

Stacking Kit,KSCME6-LG-B





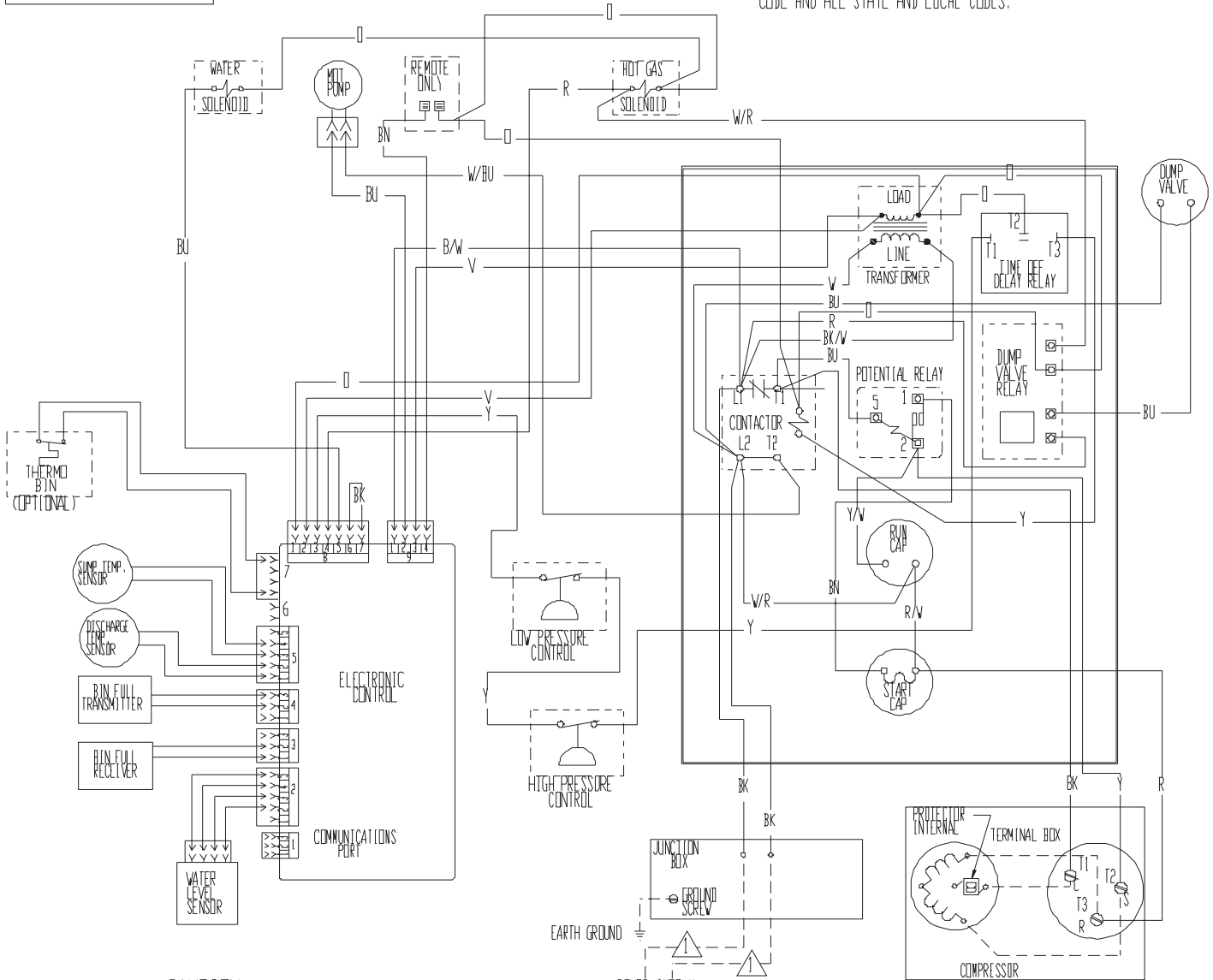
# CME1856W Service Parts

## Single Phase Wiring Diagram

17-2891-01

USE COPPER CONDUCTORS ONLY

⚠ DASHED LINES INDICATE FIELD WIRING WHICH MUST BE INSTALLED IN ACCORDANCE WITH THE NATIONAL ELECTRICAL CODE AND ALL STATE AND LOCAL CODES.



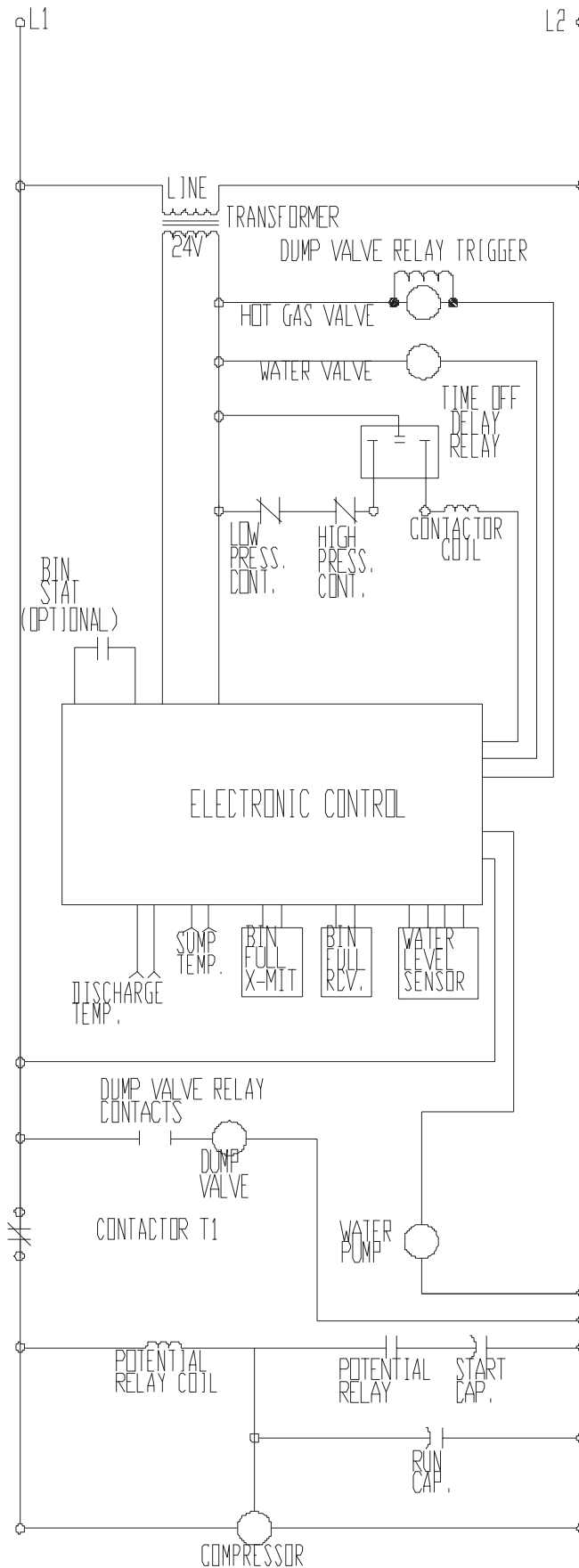
THIS UNIT MUST  
BE GROUNDED.

CAUTION:  
MORE THAN ONE DISCONNECT MEANS MAY BE  
REQUIRED TO DISCONNECT ALL POWER TO THIS UNIT.

POWER SUPPLY  
SEE NAMEPLATE FOR  
PROPER VOLTAGE REQUIREMENTS  
AND MAXIMUM FUSE SIZE

# CME1856W Service Parts

## Single Phase Schematic Diagram



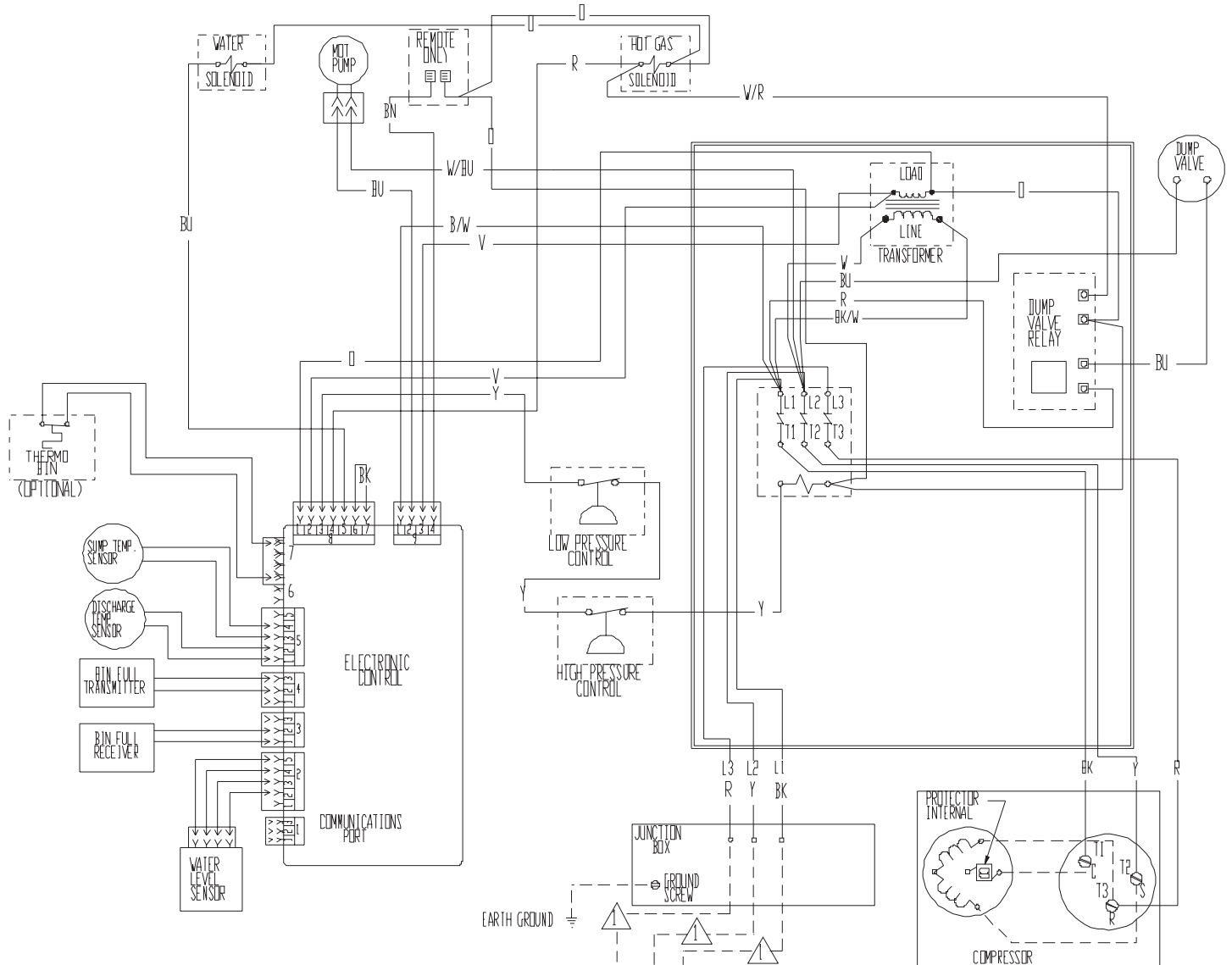
# CME1856W Service Parts

## Three Phase Wiring Diagram

17-2892-01

USE COPPER CONDUCTORS ONLY

⚠ DASHED LINES INDICATE FIELD WIRING WHICH MUST BE INSTALLED IN ACCORDANCE WITH THE NATIONAL ELECTRICAL CODE AND ALL STATE AND LOCAL CODES.



THIS UNIT MUST  
BE GROUNDED.

CAUTION:  
MORE THAN ONE DISCONNECT MEANS MAY BE  
REQUIRED TO DISCONNECT ALL POWER TO THIS UNIT.

SEE NAMEPLATE FOR  
PROPER VOLTAGE REQUIREMENTS  
AND MAXIMUM FUSE SIZE

## Three Phase Schematic



# SERVICE BULLETIN

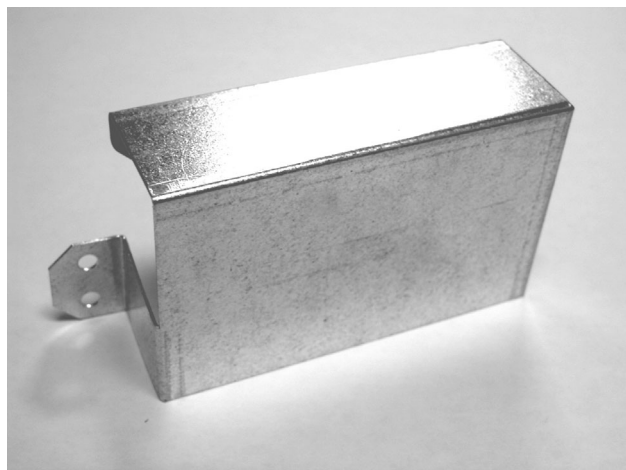
## Subject: Controller Cover

Affects all versions of models: CME1356, CME1656, CME1856 and CME2006

The above models are now manufactured with a sheet metal cover over the top of the controller.

Service controllers also are now shipped with a cover that should be applied to these models whenever replacing the controller if the machine does not already have a cover installed.

Whenever cleaning or servicing any unit, check to see whether it has a cover over the controller like the one shown below. If it does not, Scotsman recommends installing a cover. A separate part is now available for this purpose. Its part number is **A37480-021**. It mounts over the top end of the controller and is secured by two sheet metal screws. Use the cover as a template and drill two 1/8" holes for the two screws.



*Controller Cover*



*Cover Installed on Unit*

Scotsman is shipping a supply of covers to all Scotsman Distributors and listed service agencies. A supply of covers should be carried by each service person on service calls so a cover may be installed on the unit being cleaned or serviced if one is not already in place. Additional covers may be obtained free of charge from Scotsman, through the local Scotsman Distributor, as needed.