

# CME306 and CME456 Service Parts

This parts list contains the parts numbers for the CME306 and CME456 air and water cooled models.

The title at the top of the page identifies which model the parts list applies to.

The machines are available in 115/60 or 230/60 or 230/50 electrical configurations.

The A and B series have different water cooled condensers. C series has a different expansion valve and fan motor bracket, as well as the B series water cooled condenser..

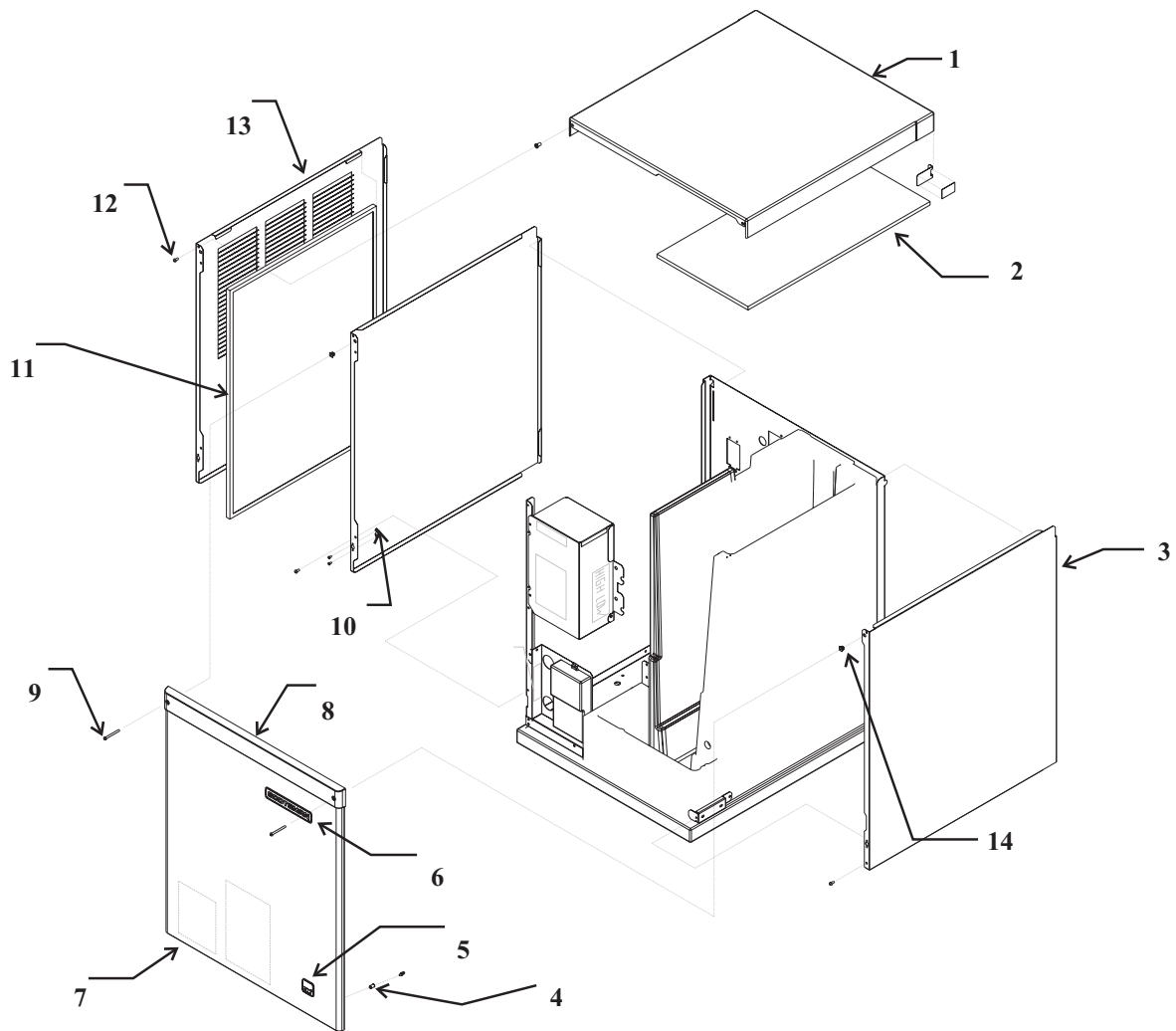
Be sure to check the description to confirm that the correct part number is being ordered.

## Table of Contents

Cabinet . . . . .	Page 2
Water Pump and Sensor . . . . .	Page 3
Evaporator and Water Distribution . . . . .	Page 4
CME306 Air Cooled Refrigeration . . . . .	Page 5
CME456 Air Cooled Refrigeration . . . . .	Page 6
Air Cooled Section . . . . .	Page 7
Interior Parts . . . . .	Page 8
CME306 Water Cooled Refrigeration . . . . .	Page 9
CME456 Water Cooled Refrigeration . . . . .	Page 10
Water Cooled Section . . . . .	Page 11
Control Box and Electrical . . . . .	Page 12
Wiring Diagram . . . . .	Page 13

# CME306 and CME456 Service Parts

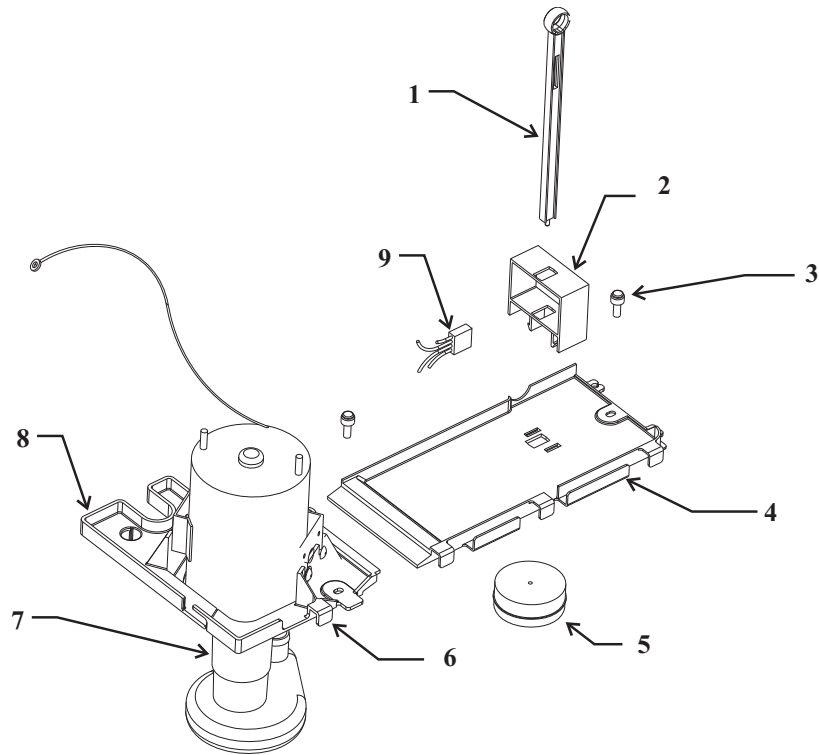
## Cabinet



Item Number	Part Number	Description
1	<a href="#">02-3820-21</a>	Top panel, plastic, includes item 2
2	<a href="#">02-3835-01</a>	Insulation
3	A37513-021	Right side panel, includes catches
4	<a href="#">03-1733-01</a>	Strike
	<a href="#">03-1734-01</a>	Insert
5	<a href="#">15-0792-02</a>	CM3 emblem
6	<a href="#">15-0808-01</a>	Emblem
7	A37577-021	Front panel, includes trim strip, strikes and emblems
8	<a href="#">02-3819-31</a>	Trim strip
9	<a href="#">03-1735-03</a>	Screw
10	<a href="#">03-1733-02</a>	Catch
11	<a href="#">02-2976-01</a>	Filter for air cooled
12	<a href="#">03-1531-01</a>	Screw
13	A37521-021	Left side panel, AC
	A37531-021	Left side panel, WC
14	<a href="#">03-3804-01</a>	Catch

# CME306 and CME456 Service Parts

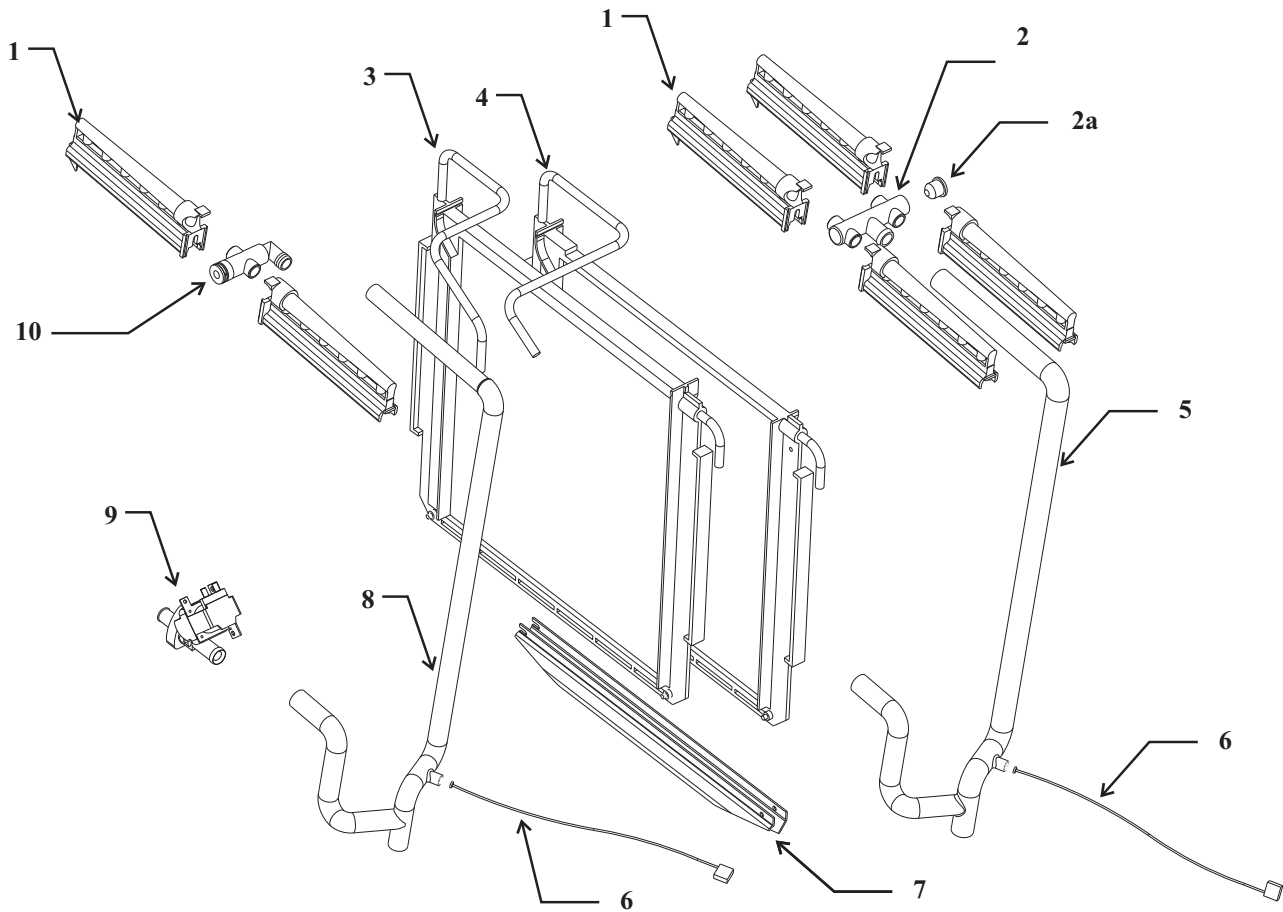
## Water Pump and Sensor



Item Number	Part Number	Description
1	<a href="#">02-3777-03</a>	Float stem, was dark blue, changed to <b>black</b> 2013.
2	<a href="#">11-0539-51</a>	Water level sensor
3	<a href="#">03-1691-01</a>	Screw
4	<a href="#">02-3803-01</a>	Sump cover
5	<a href="#">02-3341-01</a>	Float
6	<a href="#">02-3813-01</a>	Pump bracket - front half
7	<a href="#">12-2586-21</a>	Water pump, CME306 115/60
	<a href="#">12-2586-26</a>	Water pump, CME306 all 230 volt
	<a href="#">12-2586-27</a>	Water pump, CME456 115/60
	<a href="#">12-2586-23</a>	Water pump, CME456 all 230 volt
8	<a href="#">02-3802-01</a>	Pump bracket, back half
9	<a href="#">12-2665-01</a>	Harness

# CME306 and CME456 Service Parts

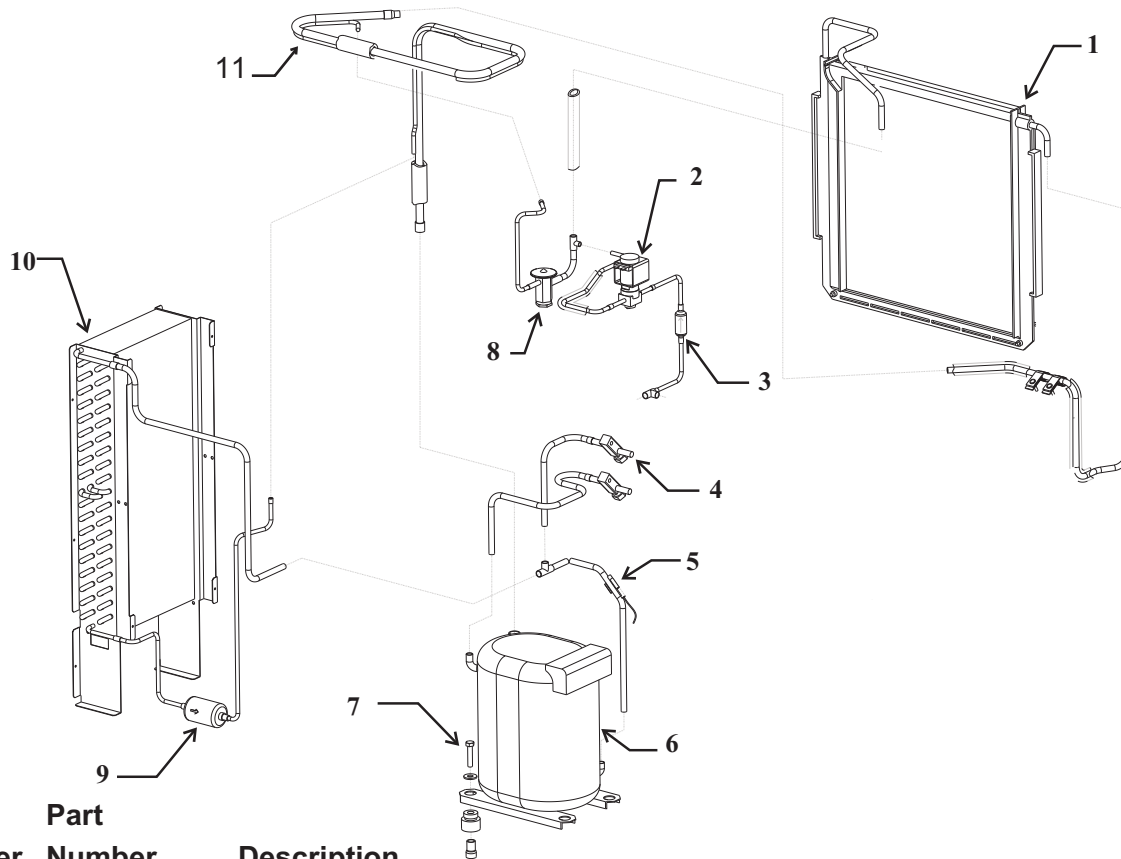
## Evaporator and Water Distribution



Item Number	Part Number	Description
1	<a href="#">02-2527-01</a>	Water distributor
2	<a href="#">02-3811-01</a>	Manifold (456 only)
2a	<a href="#">13-0840-01</a>	Rubber plug
3	A37575-022	Left evaporator
4	A37575-021	Right evaporator (456 only)
5	<a href="#">02-3807-01</a>	Water hose, CME456 only
6	<a href="#">11-0545-21</a>	Temperature sensor, includes discharge sensor
7	<a href="#">02-3824-01</a>	Water trough CME456 only
8	<a href="#">02-3814-01</a>	Water hose, CME306 only (1 plate)
9	<a href="#">11-0514-02</a>	Purge valve, 115/60 Hz
	<a href="#">11-0514-22</a>	Coil only, 115 volt
	<a href="#">11-0514-01</a>	Purge valve, 230 volt
	<a href="#">11-0514-21</a>	Coil only, 230 volt
10	A30926-001	Water manifold, CME306 only

# CME306 and CME456 Service Parts

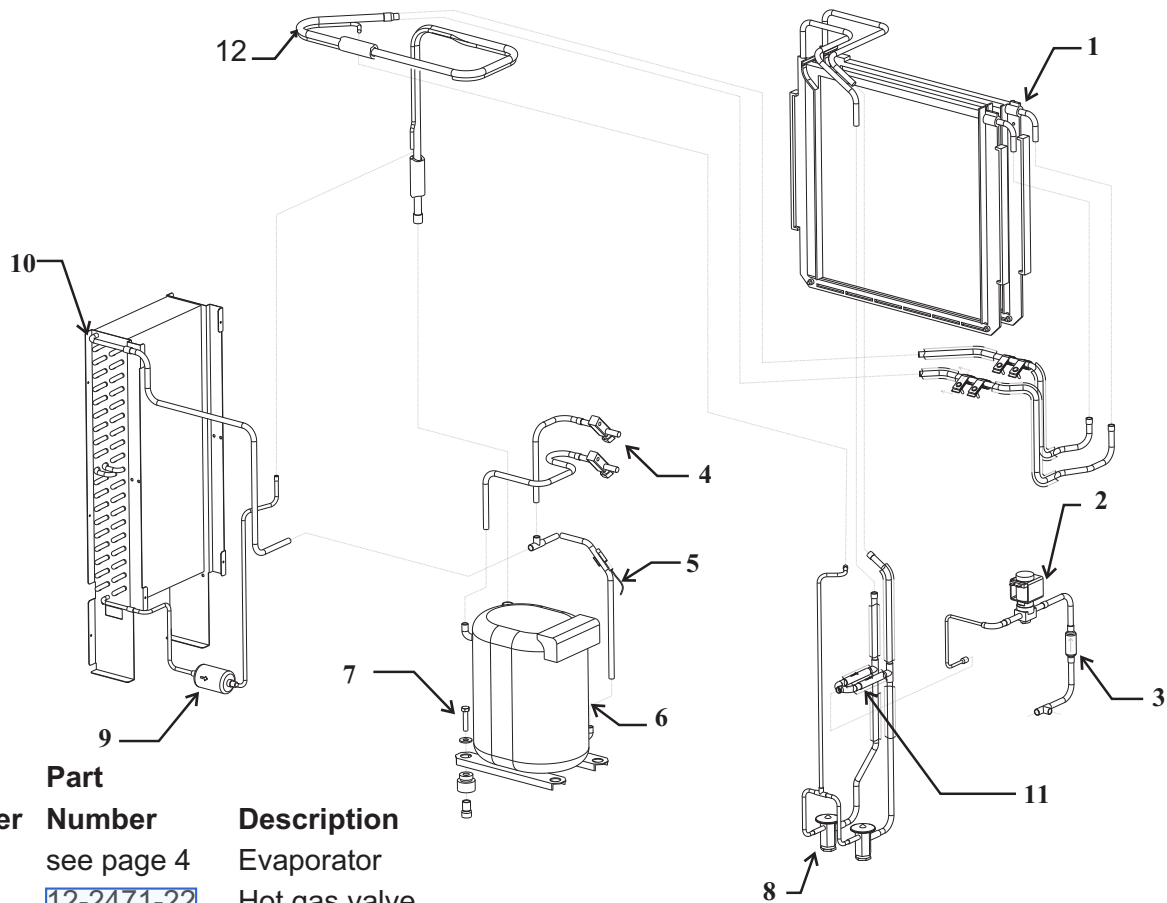
## CME306 Air Cooled Refrigeration



Item Number	Part Number	Description
1	A37575-022	Evaporator
2	<a href="#">12-2471-01</a>	Hot gas valve
3	<a href="#">16-1063-02</a>	Strainer
4	<a href="#">16-0832-21</a>	Access valve
	<a href="#">16-0832-03</a>	Port cap
	<a href="#">16-0832-02</a>	Stem cap
5	<a href="#">11-0545-21</a>	Discharge sensor, includes water sensor
6	<a href="#">18-8838-21</a>	Compressor, 115/60, includes PTCR, Run Cap and drier. RS43C2E-CAA-213
	<a href="#">18-5700-50</a>	Overload for above
	<a href="#">18-8720-56</a>	Compressor, 230/50, includes drier
	<a href="#">18-5700-55</a>	Overload for above
	<a href="#">18-8838-23</a>	Compressor, 230/60. RS43C2E-CAV-213
	<a href="#">18-8838-50</a>	Overload for above
7	<a href="#">03-1405-20</a>	Screw
	<a href="#">03-1407-07</a>	Washer
	<a href="#">18-2200-28</a>	Grommet
	<a href="#">18-2200-27</a>	Sleeve
8	<a href="#">16-1009-22</a>	TXV, AN 1/2 SZ. For A and B series.
	<a href="#">16-1115-02</a>	TXV. Danfoss, for C thru H series
	<a href="#">19-0599-06</a>	Insulation for TXV.
9	<a href="#">02-3319-01</a>	Filter drier
10	<a href="#">18-8833-01</a>	Air cooled condenser
11	A37538-001	Suction line

# CME306 and CME456 Service Parts

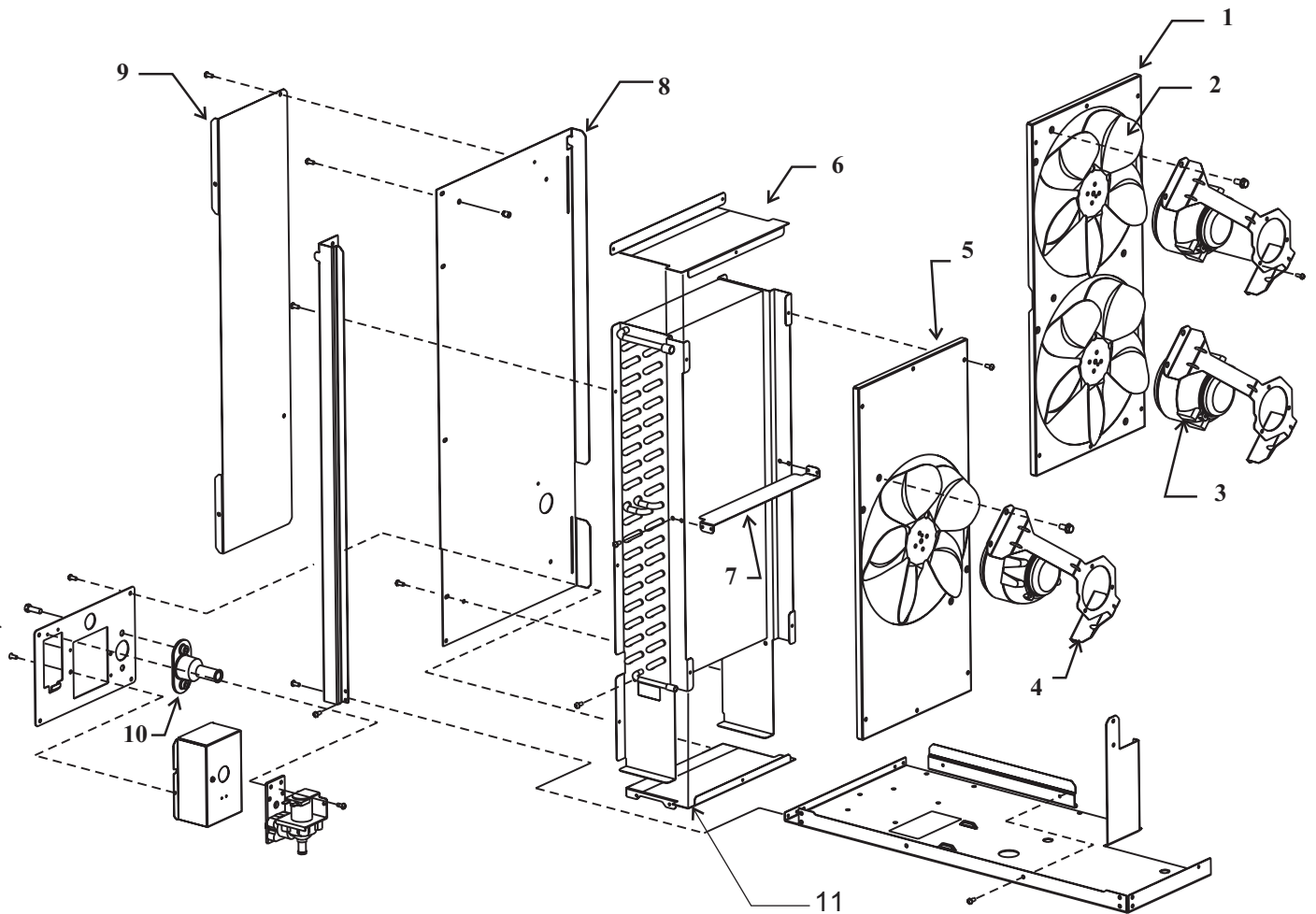
## CME456 Air Cooled Refrigeration



Item Number	Part Number	Description
1	see page 4	Evaporator
2	<a href="#">12-2471-22</a>	Hot gas valve
3	<a href="#">16-1063-02</a>	Strainer
4	<a href="#">16-0832-21</a>	Access valve
	<a href="#">16-0832-03</a>	Port cap
	<a href="#">16-0832-02</a>	Stem cap
5	<a href="#">11-0545-21</a>	Discharge sensor, includes water sensor
6	<a href="#">18-8839-21</a>	Compressor, 115/60, includes PTCR, Run Cap. and drier. RS55C2E-CAA-213
	<a href="#">18-8711-50</a>	Overload for above
	<a href="#">18-8839-22</a>	Compressor, 230/50, includes drier
	<a href="#">18-8721-50</a>	Overload for above
	<a href="#">18-8839-23</a>	Compressor, 230/60. RS55C2E-CAV-213
	<a href="#">18-8839-50</a>	Overload for above
7	<a href="#">03-1405-20</a>	Screw
	<a href="#">03-1407-07</a>	Washer
	<a href="#">18-2200-28</a>	Grommet
	<a href="#">18-2200-27</a>	Sleeve
8	<a href="#">16-1009-22</a>	TXV, AN ½ SZ. For A and B series.
	<a href="#">16-1115-02</a>	TXV. Danfoss, for C thru H series
	<a href="#">19-0599-06</a>	Insulation for TXV
9	<a href="#">02-3319-01</a>	Filter drier
10	<a href="#">18-8833-01</a>	Air cooled condenser
11	<a href="#">16-1071-01</a>	Check valve
12	A37538-001	Suction line

# CME306 and CME456 Service Parts

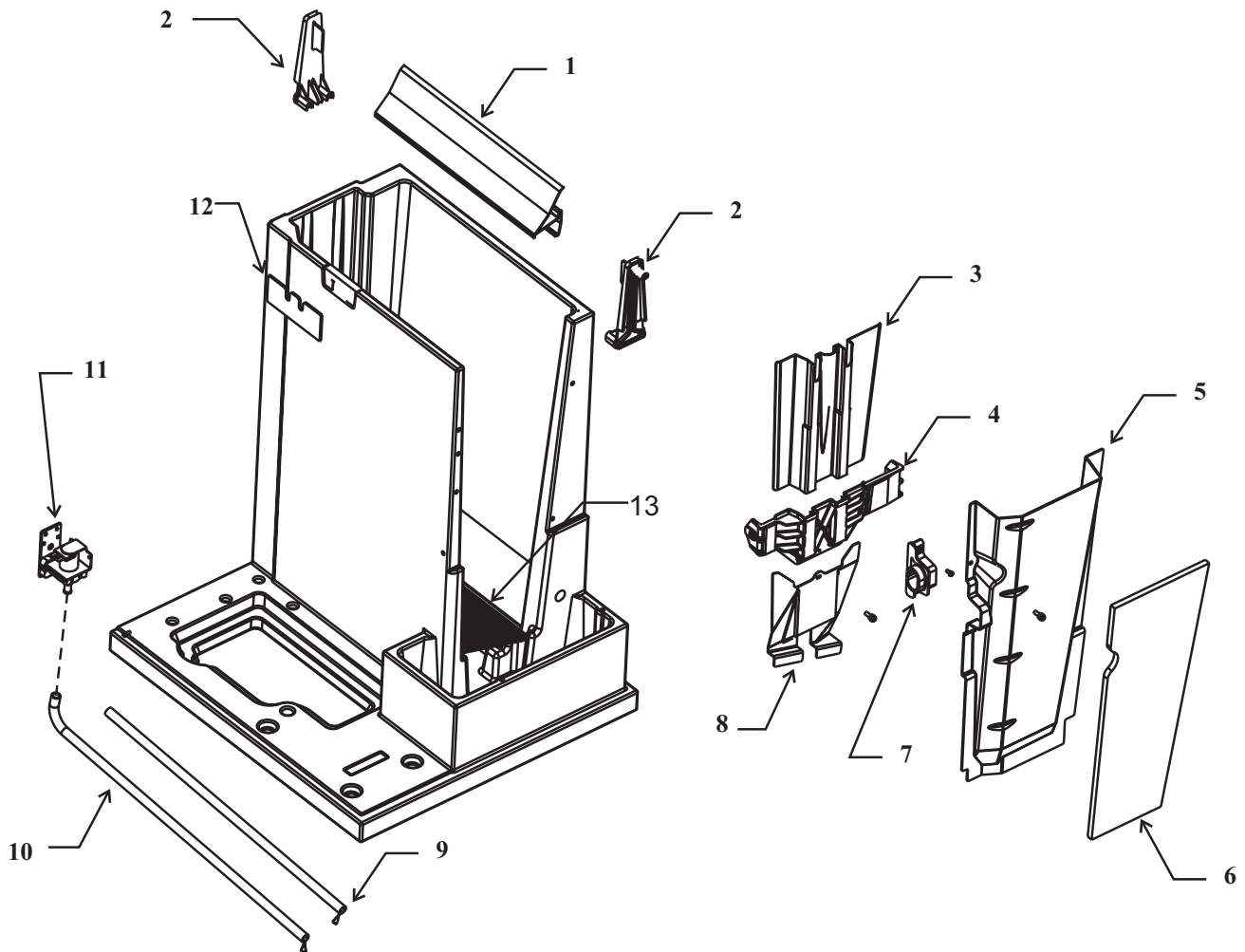
## Air Cooled Section



Item Number	Part Number	Description
1	A37576-001	Shroud for CME456
2	<a href="#">18-8836-01</a>	Fan blade
3	<a href="#">12-1681-23</a>	Fan motor, 115/60
	<a href="#">12-1681-04</a>	Fan motor, 230 volt
4	A37503-001	Fan motor bracket for A or B series (or E M & S fan motor)
	A38480-001	Fan motor bracket for C series (or GE fan motor)
	<a href="#">03-1645-01</a>	Screw, bracket to shroud
5	A37502-001	Shroud for CME306
6	A37613-001	Top of shroud
7	A37591-001	Divider
8	A37515-001	AC back panel
9	A37646-001	AC baffle
10	<a href="#">02-3692-21</a>	Drain fitting
11	A37612-001	Shroud bottom

# CME306 and CME456 Service Parts

## Interior Parts

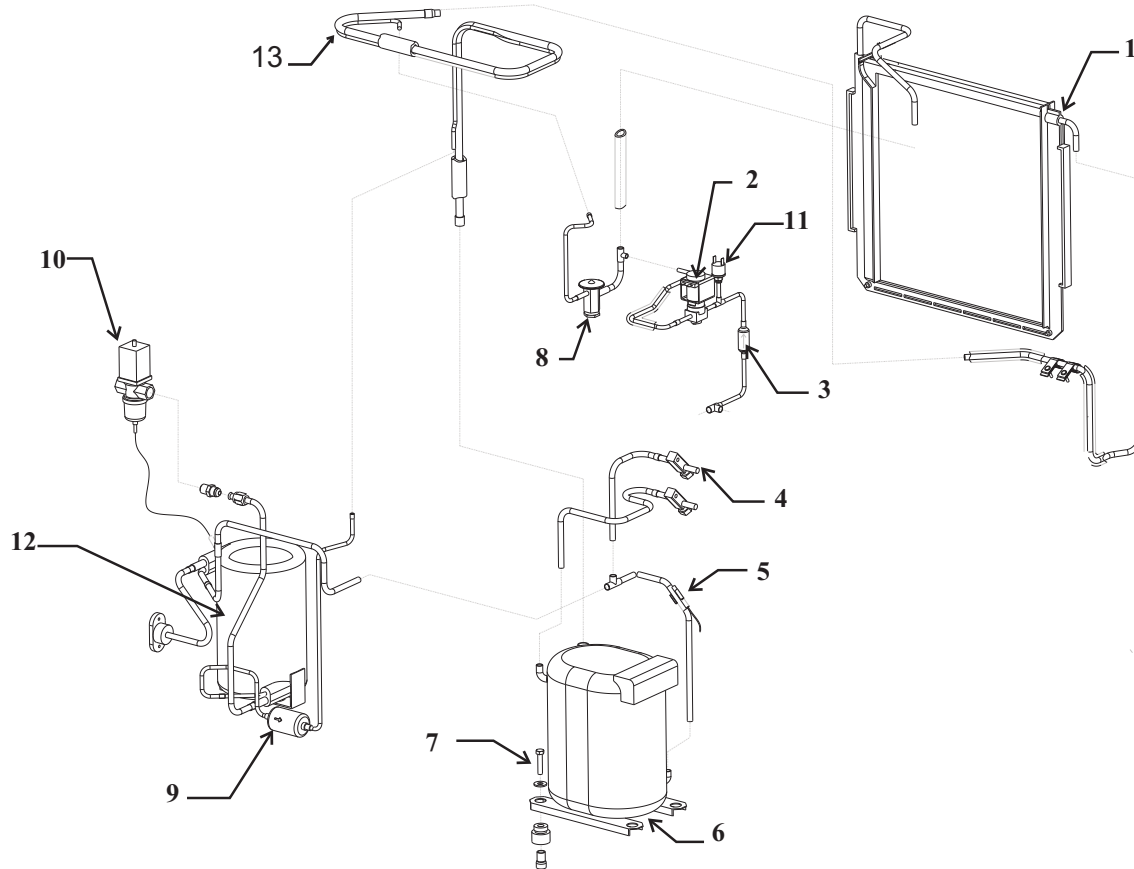


Item Number	Part Number	Description
1	<a href="#">02-3765-02</a>	Cascading shield, CME456 only
2	<a href="#">11-0540-21</a>	Ice Sensors, set of two
3	<a href="#">02-3808-01</a>	Upper splash panel
4	<a href="#">02-3805-01</a>	Evaporator support
5	<a href="#">02-3815-01</a>	Evaporator cover
6	<a href="#">02-3834-01</a>	Insulation
7	<a href="#">02-3816-01</a>	Grommet
8	<a href="#">02-3806-01</a>	Lower splash panel
9	<a href="#">13-0674-02</a>	Tubing, WC only, order 2 units (ft)
10	<a href="#">02-3812-01</a>	Tubing, AC only
	<a href="#">15-0821-01</a>	Tube, 50 Hz WRAS listed units
11	<a href="#">12-2548-01</a>	Water valve
	<a href="#">11-0568-01</a>	Water valve, 50 Hz WRAS listed units
12	<a href="#">02-3833-02</a>	Grommet seal
	<a href="#">02-3833-01</a>	Grommet
13	<a href="#">02-3801-01</a>	Ice deflector



# CME306 and CME456 Service Parts

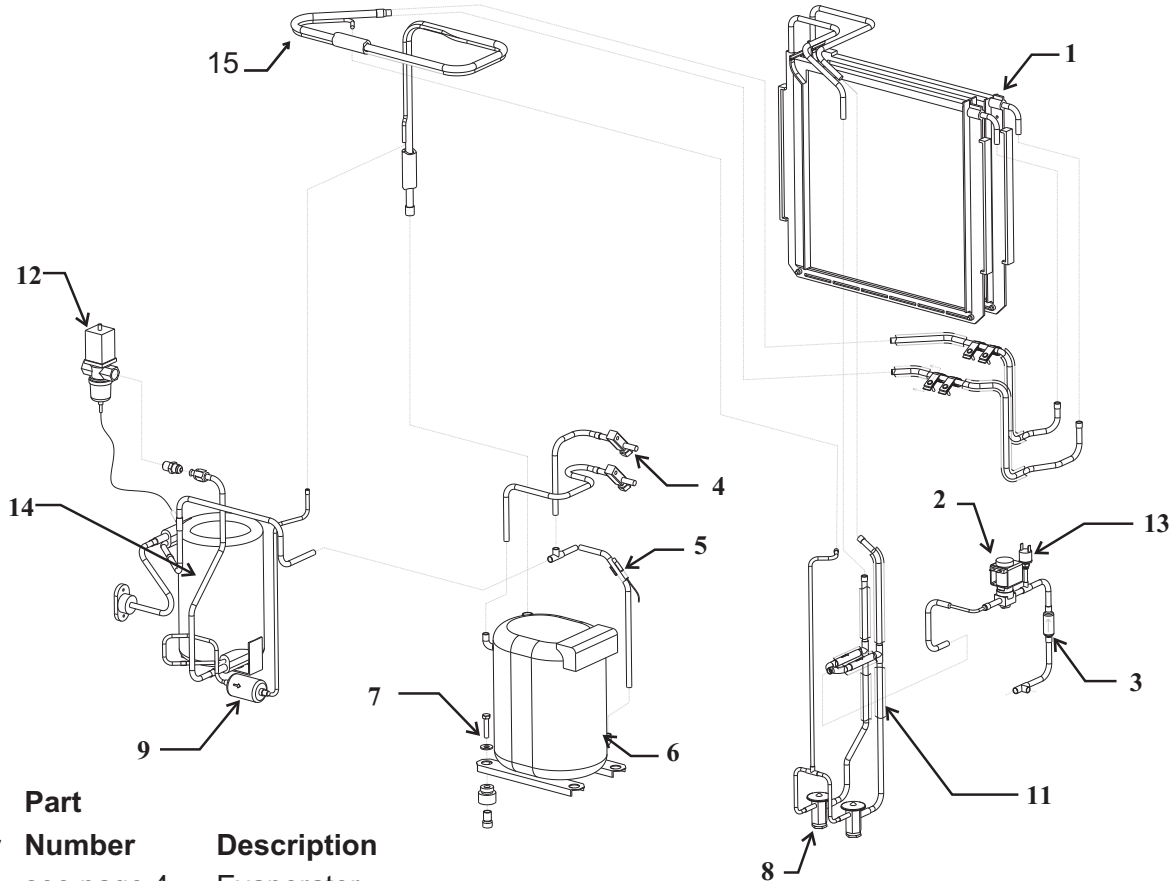
## CME306 Water Cooled Refrigeration



Item Number	Part Number	Description			
1	A37575-022	Evaporator			
2	<a href="#">12-2471-01</a>	Hot gas valve	8	<a href="#">16-1009-22</a>	TXV, AN ½ SZ. For A and B series
3	<a href="#">16-1063-02</a>	Strainer		<a href="#">16-1115-02</a>	TXV. Danfoss, for C thru H series
4	<a href="#">16-0832-21</a>	Access valve		<a href="#">19-0599-26</a>	Insulation for TXV
	<a href="#">16-0832-03</a>	Port cap	9	<a href="#">02-3319-01</a>	Filter drier
	<a href="#">16-0832-02</a>	Stem cap	10	<a href="#">11-0478-01</a>	Water regulating valve
5	<a href="#">11-0545-21</a>	Discharge sensor, includes water sensor	11	<a href="#">11-0501-21</a>	Hi pressure cut out
6	<a href="#">18-8838-21</a>	Compressor, 115/60, includes PTCR and drier RS43C2E-CAA-213	12	<a href="#">18-3306-25</a>	A Series water cooled condenser
	<a href="#">18-5700-50</a>	Overload for above		<a href="#">18-8871-21</a>	B or C Series water cooled condenser
	<a href="#">18-8720-26</a>	Compressor, 230/50, includes drier	13	A37538-001	Suction line
	<a href="#">18-5700-55</a>	Overload for above			
	<a href="#">18-8838-23</a>	Compressor, 230/60. RS43C2E-CAV-213			
	<a href="#">18-8838-50</a>	Overload for above			
7	<a href="#">03-1405-20</a>	Screw			
	<a href="#">03-1407-07</a>	Washer			
	<a href="#">18-2200-28</a>	Grommet			
	<a href="#">18-2200-27</a>	Sleeve			

# CME306 and CME456 Service Parts

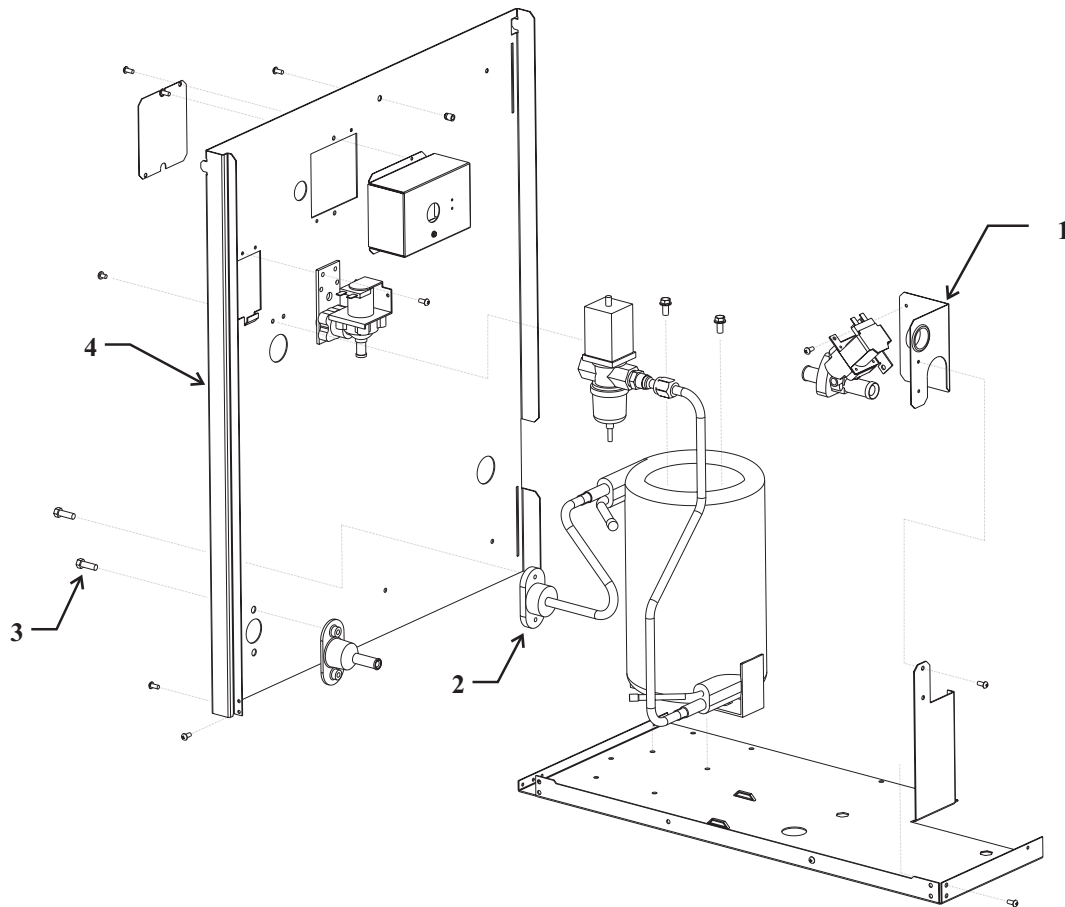
## CME456 Water Cooled Refrigeration



Item Number	Part Number	Description
1	see page 4	Evaporator
2	<a href="#">12-2471-22</a>	Hot gas valve
3	<a href="#">16-1063-02</a>	Strainer
4	<a href="#">16-0832-21</a> <a href="#">16-0832-03</a> <a href="#">16-0832-02</a>	Access valve Port cap Stem cap
5	<a href="#">11-0545-21</a>	Discharge sensor, includes water sensor
6	<a href="#">18-8839-21</a> <a href="#">18-8711-50</a> <a href="#">18-8839-22</a> <a href="#">18-8721-50</a> <a href="#">18-8839-23</a> <a href="#">18-8839-50</a>	Compressor, 115/60, includes Run cap, PTCR and drier. RS55C2E-CAA-213 Overload Compressor, 230/50, includes drier Overload Compressor, 230/60. RS55C2E-CAV-213 Overload for above
7	<a href="#">03-1405-20</a> <a href="#">03-1407-07</a> <a href="#">18-2200-28</a> <a href="#">18-2200-27</a>	Screw Washer Grommet Sleeve
8	<a href="#">16-1009-22</a> <a href="#">16-1115-02</a>	TXV, AN SZ. For A or B series TXV for C series. Insulation TXV: <a href="#">19-0599-06</a>
9	<a href="#">02-3319-01</a>	Filter drier
11	<a href="#">16-1071-01</a>	Check valve
12	<a href="#">11-0478-01</a>	Water regulating valve
13	<a href="#">11-0501-21</a>	Hi pressure cut out
14	<a href="#">18-3306-25</a> <a href="#">18-8871-21</a>	A Series water cooled condenser B or C Series water cooled condenser
15	<a href="#">A37538-001</a>	Suction line

# CME306 and CME456 Service Parts

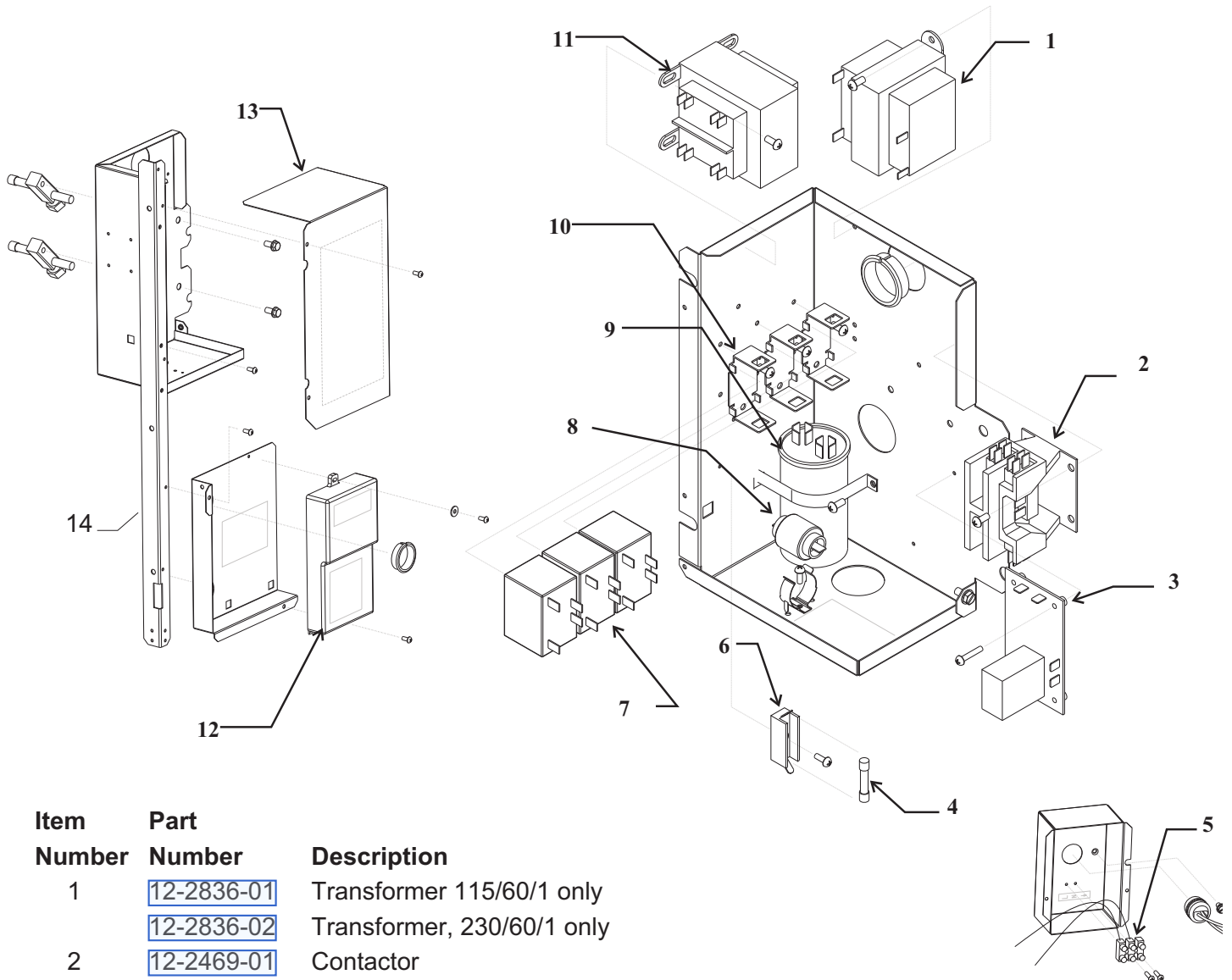
## Water Cooled Section



Item Number	Part Number	Description
1	A37507-001	Purge valve bracket, also used on air cooled
2	A31828-002	Drain casting
3	<a href="#">03-0571-01</a>	Screw
4	A37600-001	Back panel for water cooled

# CME306 and CME456 Service Parts

## Control Box and Electrical



Item Number	Part Number	Description
1	<a href="#">12-2836-01</a>	Transformer 115/60/1 only
	<a href="#">12-2836-02</a>	Transformer, 230/60/1 only
2	<a href="#">12-2469-01</a>	Contactor
3	<a href="#">11-0531-21</a>	Purge valve timer
4	<a href="#">12-2686-01</a>	Fuse for 230/50 only
5	<a href="#">12-2640-01</a>	Terminal strip for 230/50 only
6	<a href="#">12-2687-01</a>	Fuse holder 230/50 only
7	<a href="#">12-2679-01</a>	Relay 230/50 only
8	<a href="#">18-8835-01</a>	PTCR
9	<a href="#">18-1902-68</a>	Run Cap, CME306 for 115/60 Hz
	<a href="#">18-1902-17</a>	Run cap, for CME306 230/60 hz
	<a href="#">18-1902-45</a>	Run Cap CME456 115/60
	<a href="#">18-1902-30</a>	Run Cap for all CME456 230 volt
	<a href="#">18-2200-35</a>	Start Cap, CME306 230/50
10	<a href="#">12-2680-01</a>	Relay holder
11	<a href="#">12-2639-02</a>	Transformer for 230/50/1 only
12	<a href="#">12-2838-24</a>	Controller
13	A37510-001	Control box cover
14	A37505-001	Brace

### Harnesses:

#### Hi Voltage:

<a href="#">12-2775-01</a>	AC 230/50
<a href="#">12-2788-01</a>	WC 230/50
<a href="#">12-2767-01</a>	AC, WC 115/60

#### Low Voltage

<a href="#">12-2772-02</a>	WC, 230/50
<a href="#">12-2772-01</a>	AC, 230/50
<a href="#">12-2769-01</a>	AC, WC 115/60

# CME306 and CME456 Service Parts

## 60 Hz Wiring Diagram

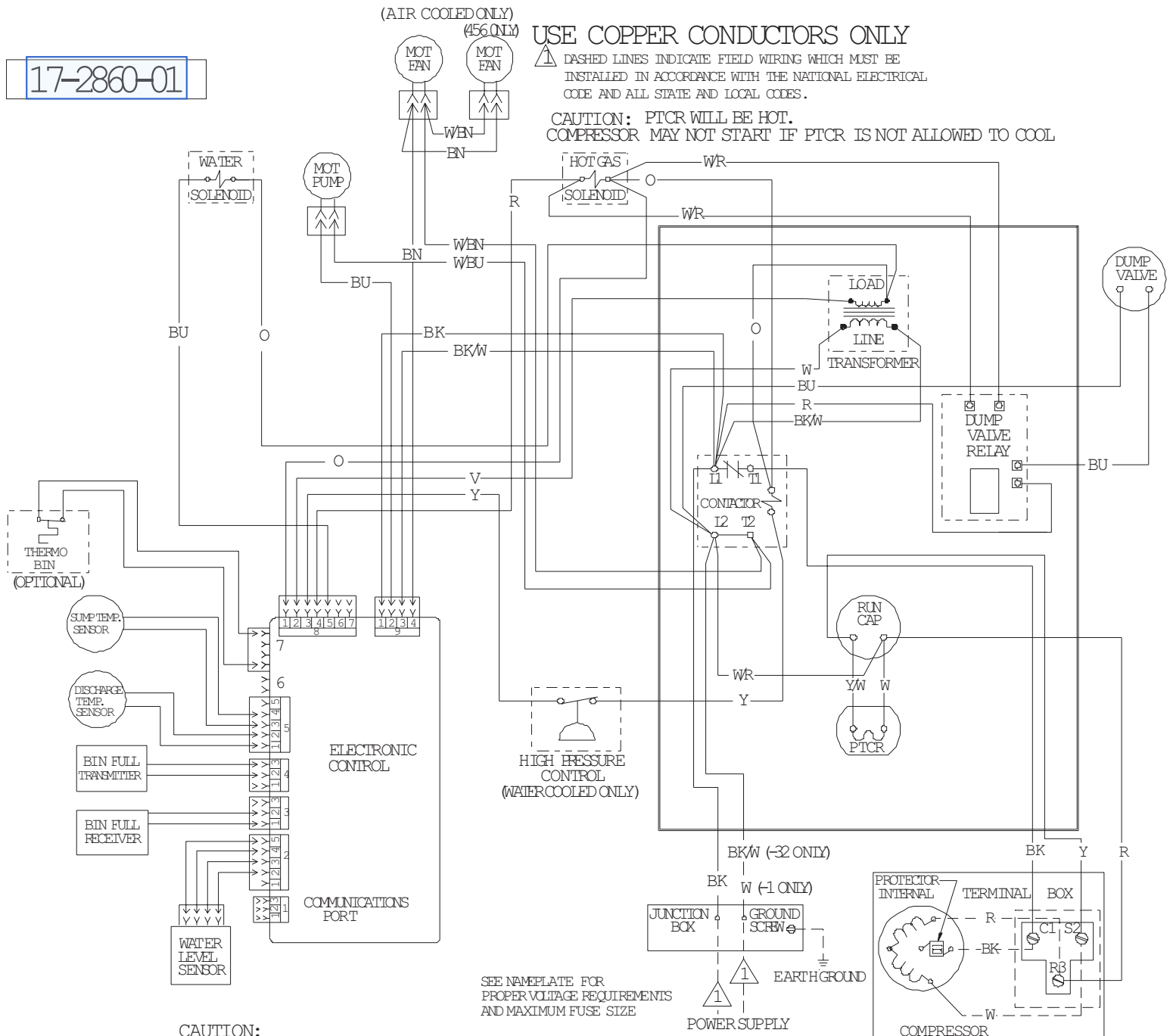
17-2860-01

(AIR COOLED ONLY)  
(456 ONLY)

### USE COPPER CONDUCTORS ONLY

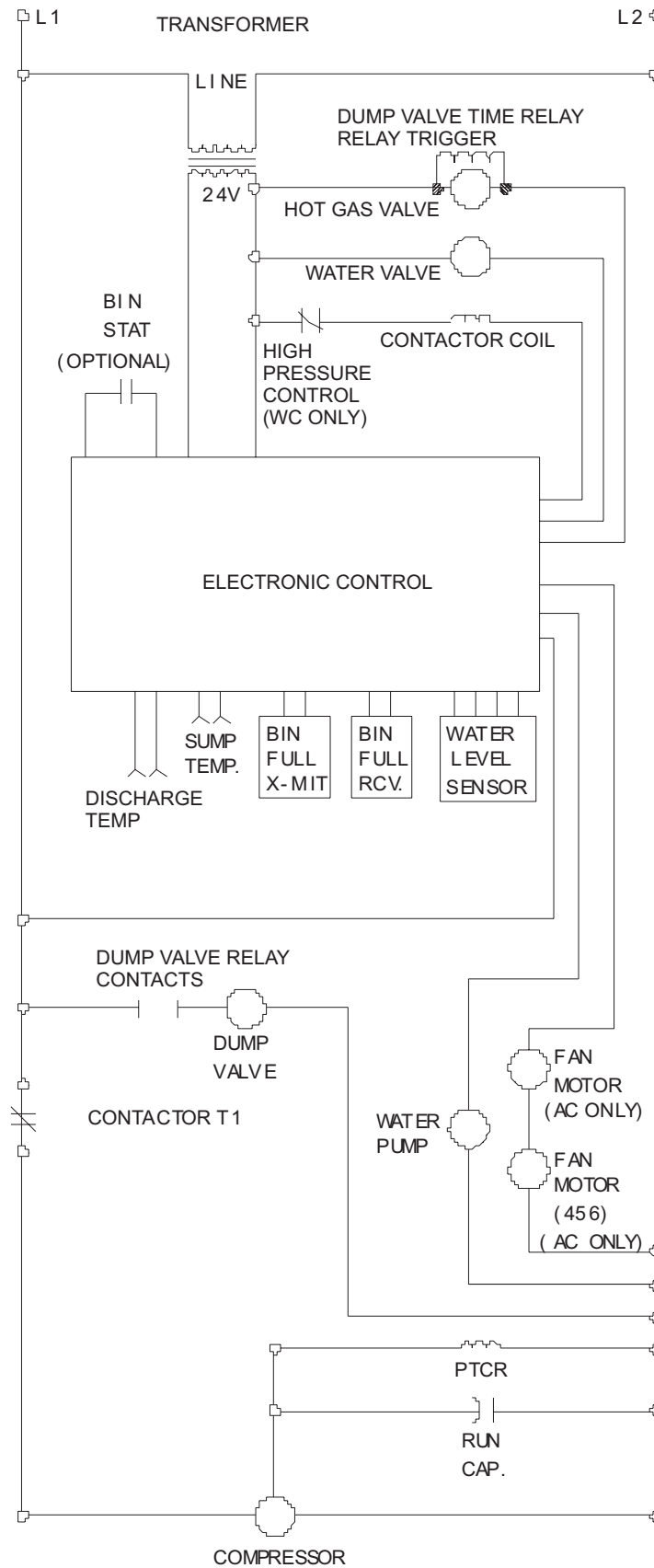
⚠ DASHED LINES INDICATE FIELD WIRING WHICH MUST BE INSTALLED IN ACCORDANCE WITH THE NATIONAL ELECTRICAL CODE AND ALL STATE AND LOCAL CODES.

CAUTION: PTCR WILL BE HOT.  
COMPRESSOR MAY NOT START IF PTCR IS NOT ALLOWED TO COOL



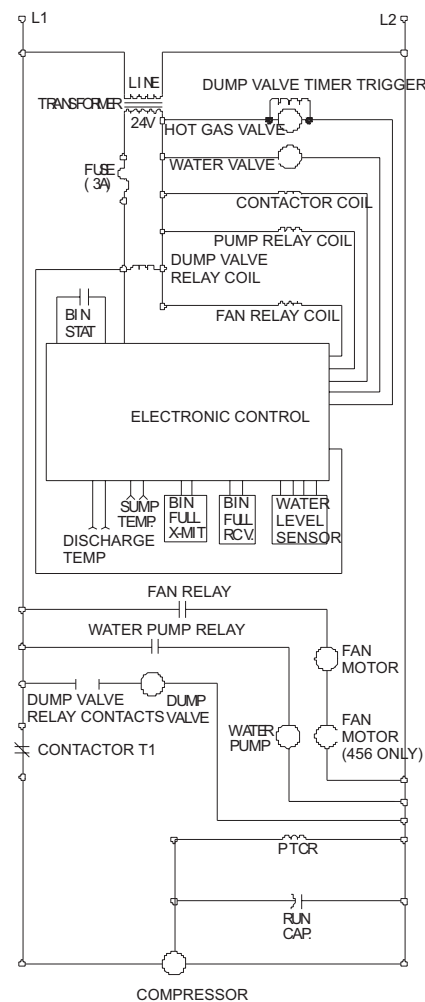
THIS UNIT MUST BE GROUNDED. CAUTION: MORE THAN ONE DISCONNECT MEANS MAY BE REQUIRED TO DISCONNECT ALL POWER TO THIS UNIT.

## 60 Hz Schematic Diagram



CAUTION: PTCR WILL BE HOT

COMPRESSOR MAY NOT START IF PTCR IS NOT ALLOWED TO COOL



## CME306 and CME456 Service Parts

THIS UNIT MUST  
BE GROUNDED.

## CME456 50 Hz Water Cooled Wiring Diagram





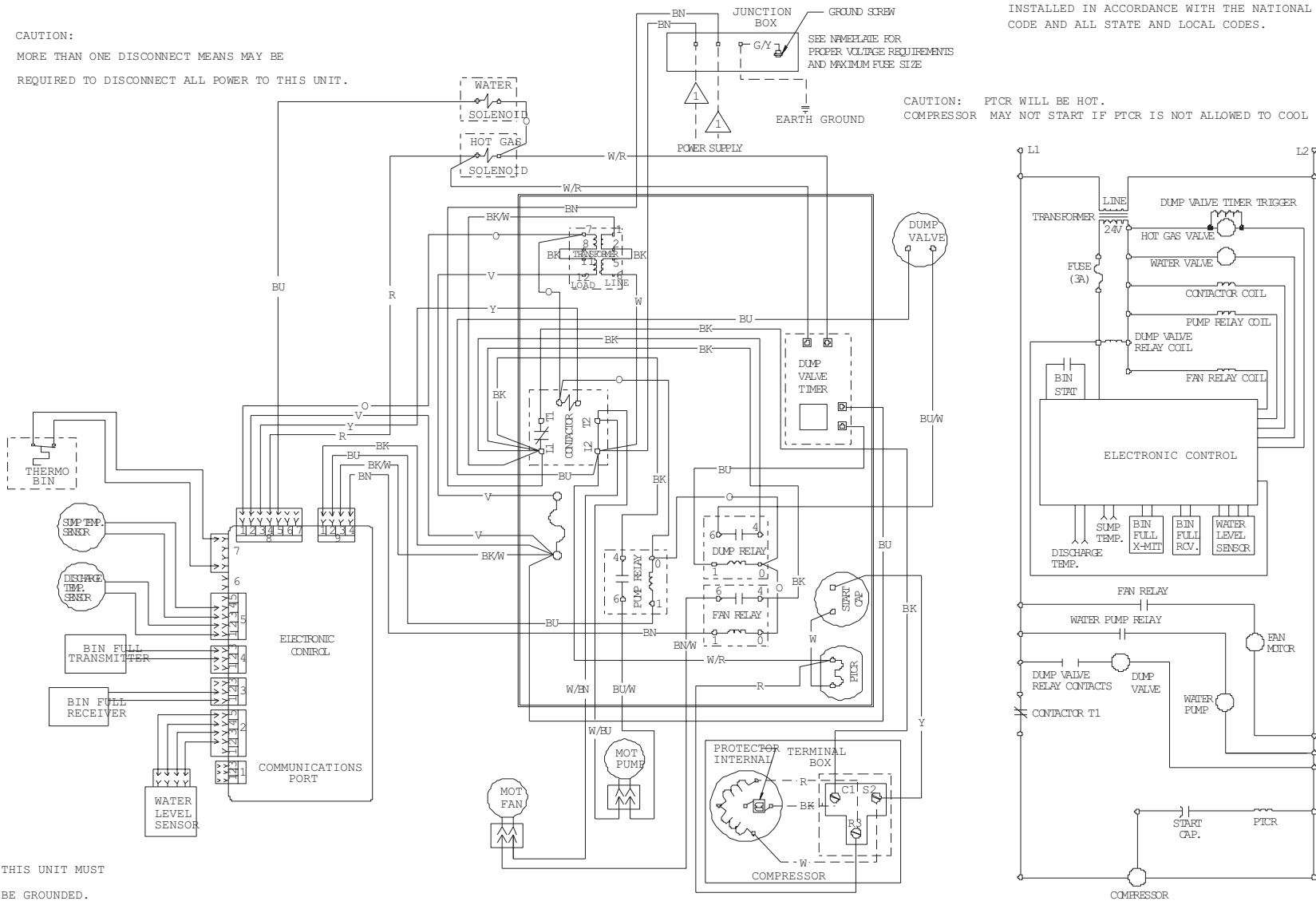
17-2789-01

USE COPPER CONDUCTORS ONLY

CAUTION:  
MORE THAN ONE DISCONNECT MEANS MAY BE  
REQUIRED TO DISCONNECT ALL POWER TO THIS UNIT.

⚠ DASHED LINES INDICATE FIELD WIRING WHICH MUST BE  
INSTALLED IN ACCORDANCE WITH THE NATIONAL ELECTRICAL  
CODE AND ALL STATE AND LOCAL CODES.

CAUTION: PTCR WILL BE HOT.  
COMPRESSOR MAY NOT START IF PTCT IS NOT ALLOWED TO COOL



THIS UNIT MUST  
BE GROUNDED.

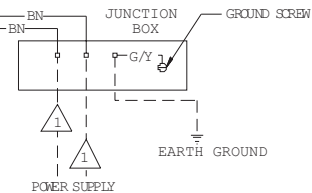
# CME306 and CME456 Service Parts CME306 50 Hz Air Cooled Wiring Diagram

17-2790-01

USE COPPER CONDUCTORS ONLY

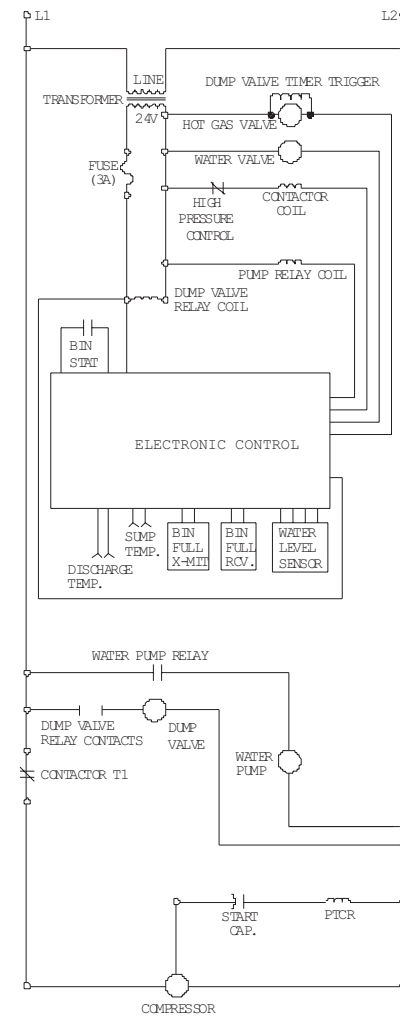
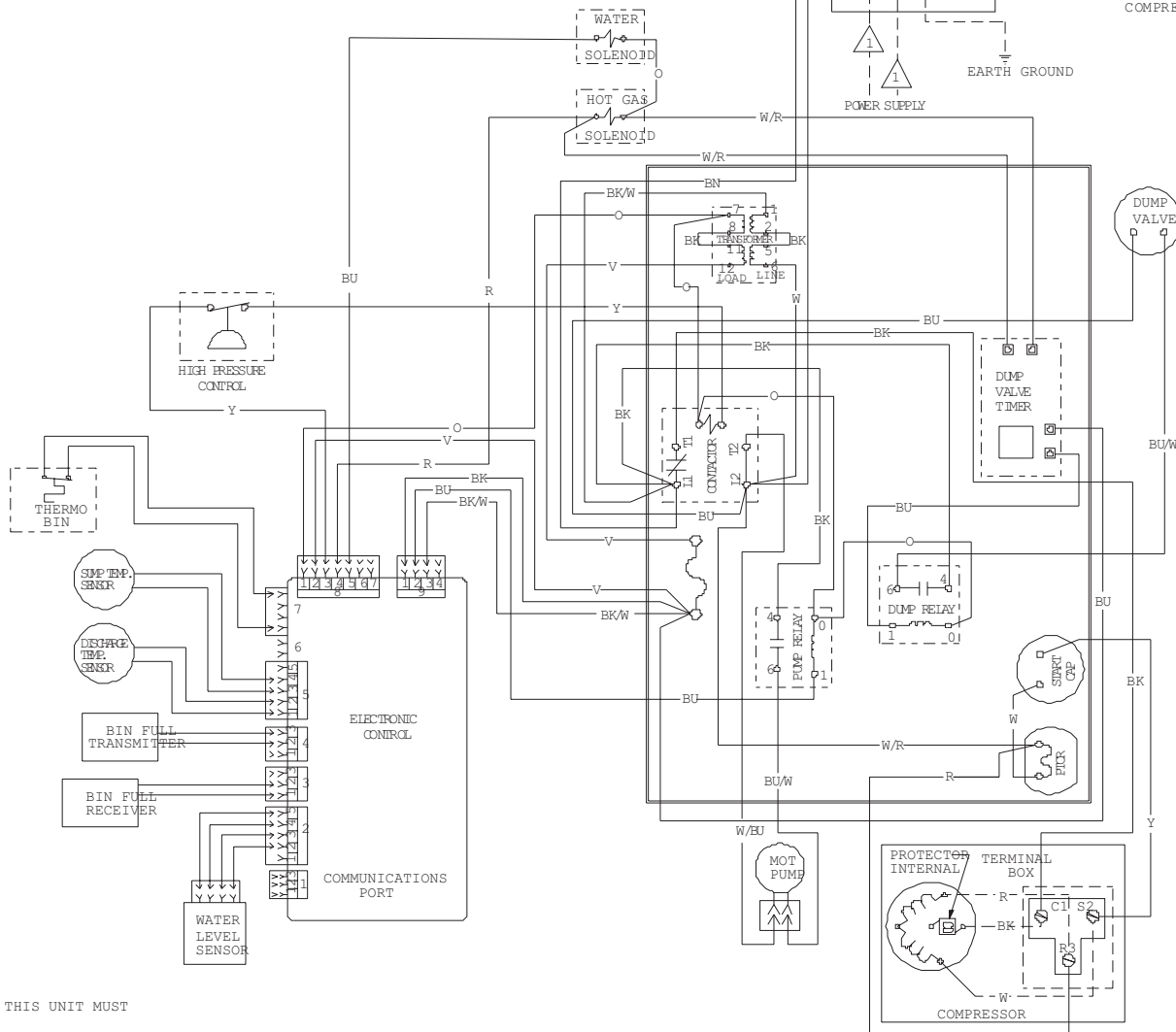
CAUTION:  
MORE THAN ONE DISCONNECT MEANS MAY BE  
REQUIRED TO DISCONNECT ALL POWER TO THIS UNIT.

SEE NAMEPLATE FOR  
PROPER VOLTAGE REQUIREMENTS  
AND MAXIMUM FUSE SIZE



1 DASHED LINES INDICATE FIELD WIRING WHICH MUST BE  
INSTALLED IN ACCORDANCE WITH THE NATIONAL ELECTRICAL  
CODE AND ALL STATE AND LOCAL CODES.

CAUTION: PTCR WILL BE HOT.  
COMPRESSOR MAY NOT START IF PTCR IS NOT ALLOWED TO COOL.



THIS UNIT MUST  
BE GROUNDED.

**CME306 50 Hz Water Cooled**