

## CME506R, CME656R & CME806R Service Parts

This parts list contains the service part numbers for 3 basic Electrical Components Common to All Machines models, plus 4 different electrical configurations. It contains service parts for all series machines. The series differences include:

- A - first production
- B - not used
- C - New front panel and side panels
- D - New top panel and PTCR
- E - New side panels and CME506R expansion valve change
- Inlet water valve
- System controller
- Water sensor
- Discharge line sensor
- Bin controls
- Water level sensor
- Hi pressure cut out

The complete model number will be needed to identify the correct part.

Unique parts include: cabinet, electrical and refrigeration.

Electrical Codes are located at the end of the model number (voltage/hertz/phase):

- -1 is 115/60/1
- -32 is 208-230/60/1
- -3 is 208-230/60/3
- -6 is 250/50/1

### Unique Electrical Components

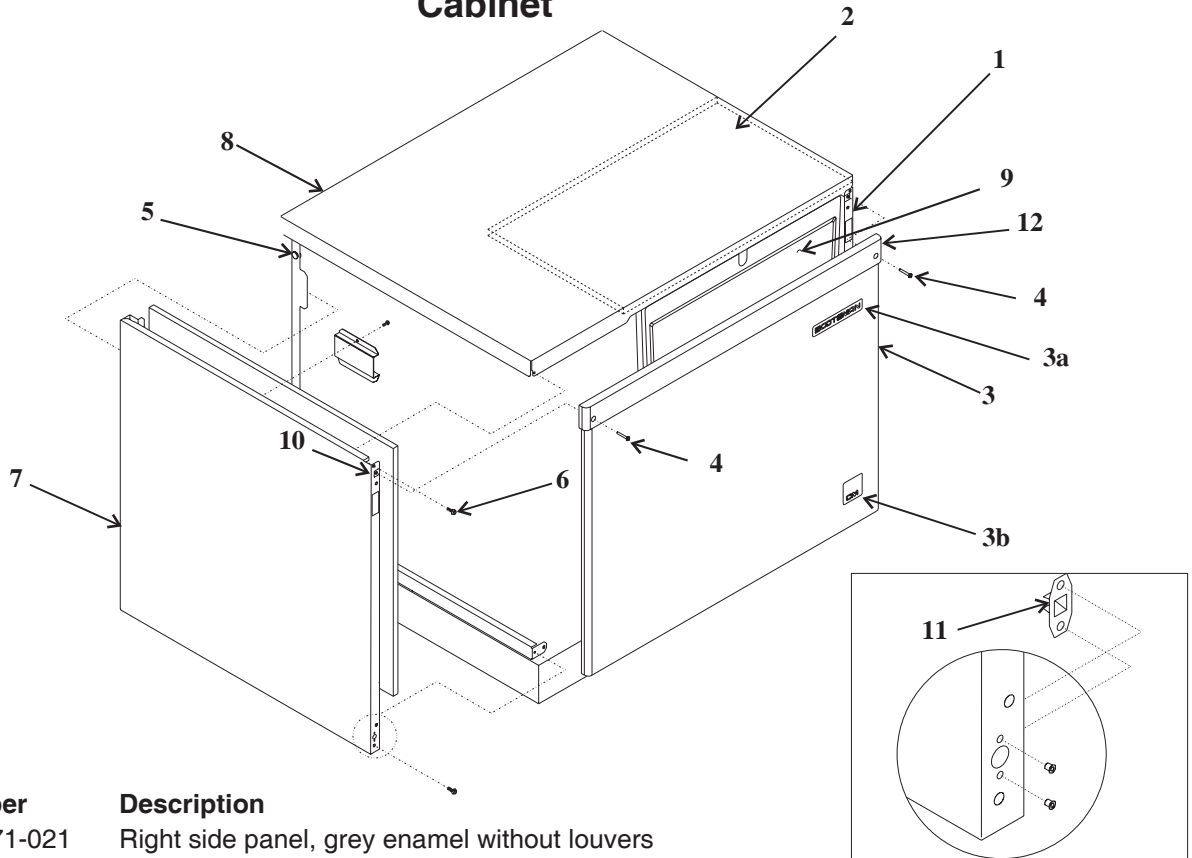
- Compressor and related starting components
- Contactor (single / three phase)
- Fan motor
- Water pump
- Transformer
- Hot gas valve

## Table of Contents

Cabinet . . . . .	page 2
Interior Structure and Controls . . . . .	page 3
CME506 Refrigeration . . . . .	page 4
CME506 E Series Refrigeration . . . . .	page 5
CME656 Refrigeration . . . . .	page 6
CME806 Refrigeration . . . . .	page 7
Receiver . . . . .	page 8
Water System Components . . . . .	page 9
Compressors and Electrical Components . . . . .	page 10
HTB555 Ice Storage Bin . . . . .	page 11
Remote Condenser . . . . .	page 12
Wiring Diagrams . . . . .	page 13

## CME506R, CME656R & CME806R Service Parts

### Cabinet

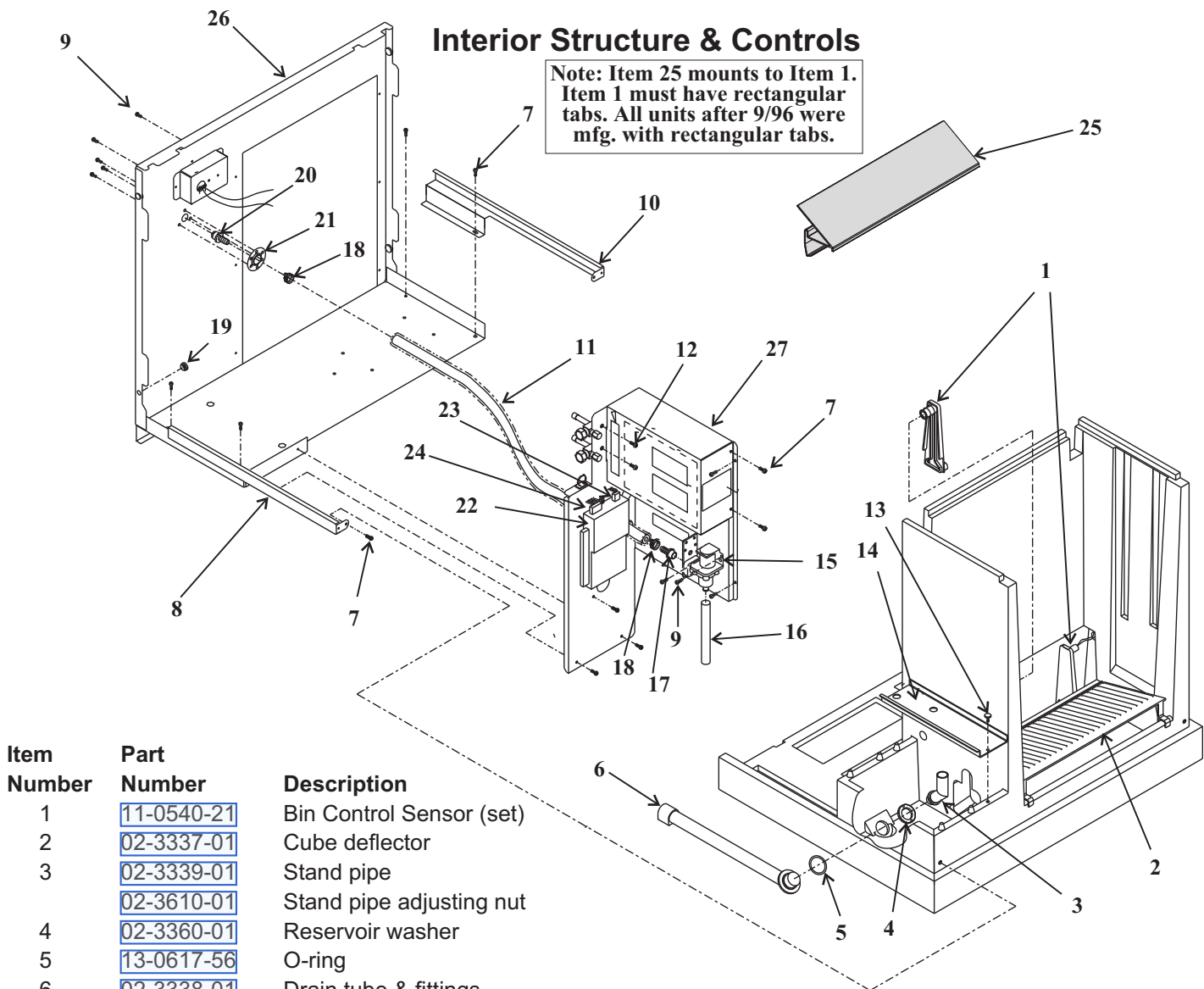


Item Number	Part Number	Description
1	A37071-021	Right side panel, grey enamel without louvers
	A37071-022	A - D series right side panel, stainless steel without louvers
	A38126-021	E Series right side panel
2	<a href="#">02-3659-01</a>	Top insulation
3	<a href="#">02-3797-21</a>	<b>C series Front panel kit</b> , gray plastic, includes trim strip & emblems
	<a href="#">03-1733-01</a>	Strike (for C model panel, SS and plastic)
	A37167-001	Front panel kit, gray plastic, includes item 10a (for A series)
	A37488-021	<b>C or higher series Front panel kit, stainless steel</b> , includes trim strip & emblems
	A35964-002	Front panel kit, stainless steel (for A models)
3a	<a href="#">15-0808-01</a>	Emblem for ss panel (Scotsman); <a href="#">03-0271-00</a> is the speed nut for emblem
3b	<a href="#">15-0792-02</a>	Emblem for C to E series front panel, (CM <sup>3</sup> )
4	<a href="#">03-1735-01</a>	Screw for trim strip (for C or D or E series)
	<a href="#">03-1404-12</a>	Sheet metal screw for plastic front panel (for A series)
	<a href="#">03-1419-22</a>	Sheet metal screw for ss front panel
5	<a href="#">02-1875-03</a>	Panel bumper/hole plug
6	<a href="#">03-1531-01</a>	Sheet metal screw for A - C series
	<a href="#">03-1403-19</a>	Machine screw for D series
7	A37070-021	Left side panel, grey enamel without louvers A - D series only
	A37070-022	Left side panel, stainless steel without louvers A - D series only
	A38127-021	E Series Left side panel
8	A35965-001	Top panel, grey enamel, order item 2 also
	A35965-002	Top panel, stainless steel, order item 2 also
	<a href="#">02-3822-21</a>	Top panel, plastic, original with D series, fits all and includes item 2
9a	<a href="#">02-3663-01</a>	Evaporator cover, use began Feb. 1997. For A and B series
	<a href="#">02-3796-01</a>	Evap cover insulation for above cover
	<a href="#">02-3663-20</a>	Evaporator cover w/ins for C - higher series
10	<a href="#">03-1423-06</a>	Speed nut for panel screws
11	<a href="#">03-1733-02</a>	Catch
		12 <a href="#">02-3794-31</a> Trim strip.
		<a href="#">03-1731-02</a> Push nut for trim strip

# CME506R, CME656R & CME806R Service Parts

## Interior Structure & Controls

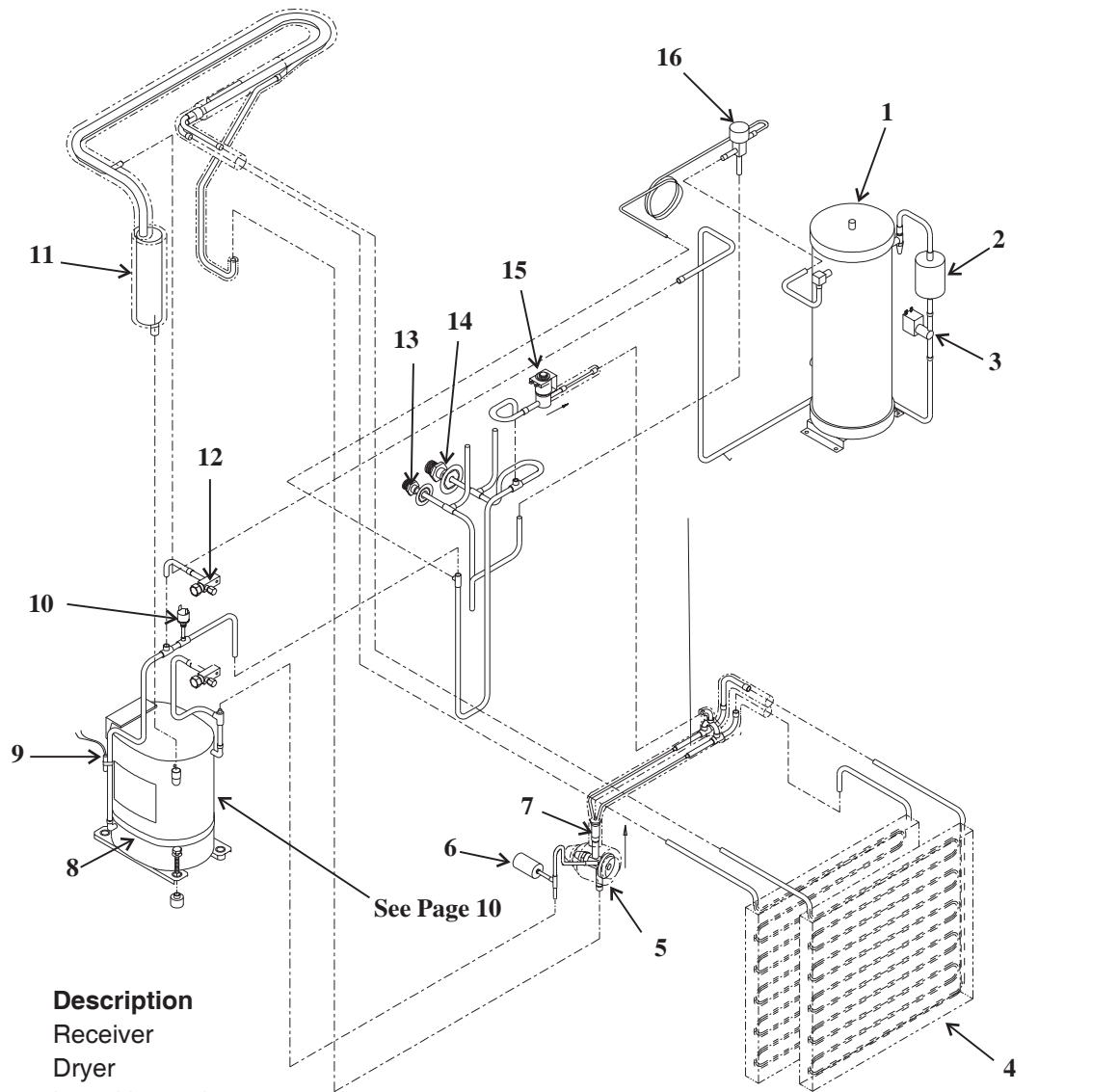
Note: Item 25 mounts to Item 1.  
Item 1 must have rectangular  
tabs. All units after 9/96 were  
mfg. with rectangular tabs.



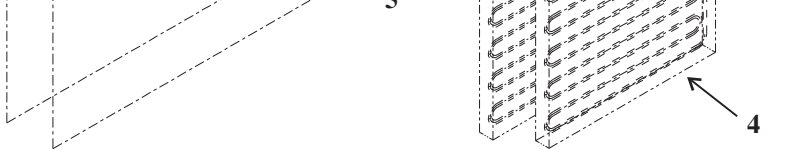
Item Number	Part Number	Description
1	<a href="#">11-0540-21</a>	Bin Control Sensor (set)
2	<a href="#">02-3337-01</a>	Cube deflector
3	<a href="#">02-3339-01</a>	Stand pipe
	<a href="#">02-3610-01</a>	Stand pipe adjusting nut
4	<a href="#">02-3360-01</a>	Reservoir washer
5	<a href="#">13-0617-56</a>	O-ring
6	<a href="#">02-3338-01</a>	Drain tube & fittings
7	<a href="#">03-1404-18</a>	Screw
8	A36298-001	Left side channel
9	<a href="#">03-1404-07</a>	Screw
10	A36297-001	Right side channel
11	<a href="#">13-0906-01</a>	Plastic Inlet water tube, 21"
	not used after Sept. 1996	
12	<a href="#">03-1645-01</a>	Screw
13	<a href="#">03-1691-01</a>	Nylon screw
14	<a href="#">02-3340-01</a>	Reservoir cover
15	<a href="#">12-2548-01</a>	Inlet water valve
16	<a href="#">13-0674-02</a>	Tubing, 9" req., order 1 unit
17	obsolete	Water inlet fitting for hose
	<a href="#">16-1020-01</a>	Water fitting for copper
18	obsolete	Clamp for hose
19	<a href="#">13-0903-01</a>	Bumper for side panels
20	<a href="#">16-0997-01</a>	Inlet water fitting for hose
	<a href="#">16-1019-01</a>	Inlet water fitting for copper

Item Number	Part Number	Description
21	<a href="#">16-0701-07</a>	Mounting flange
22	<a href="#">12-2838-24</a>	System controller, fits all
23	<a href="#">12-2541-21</a>	Hi Voltage harness A - C
	<a href="#">12-2785-01</a>	Hi voltage harness - D series
24	<a href="#">12-2644-02</a>	Lo voltage harness A - C
	<a href="#">12-2782-02</a>	Lo voltage harness, D + series
25	<a href="#">02-3657-01</a>	Cascading shield, use began 2/97.
26	A36460-001	Back panel assy
27	A35959-001	Hi voltage box cover

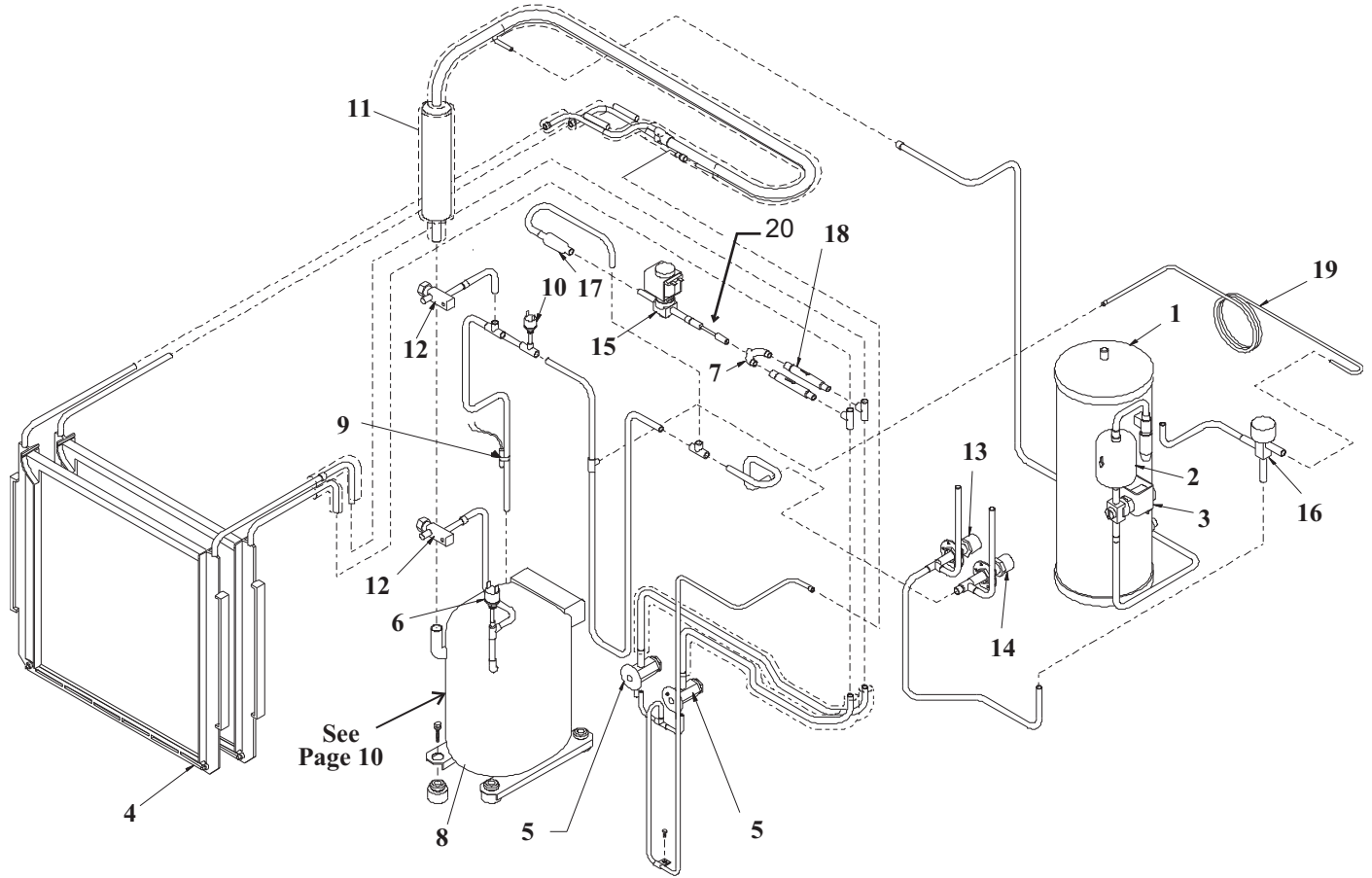
## CME506R A - D Series Refrigeration System



Item Number	Part Number	Description	
1	16-0761-01	Receiver	
2	02-3319-02	Dryer	
3	12-2471-23	Liquid line valve	
4	A36734-020	Evaporator	
5	16-1017-21	TXV	
	02-2920-01	Insulation for TXV	
6	11-0502-21	Pump down pressure switch	
7	16-0843-03	Distributor and tubes	
8	12-1868-01	Crankcase heater	
9	02-3410-21	Discharge line temperature sensor, includes water temp sensor & clip	
	03-1711-01	Sensor clip	
10	11-0501-22	Hi pressure cut out switch	
11	16-0778-21	Accumulator	
12	16-0832-20	Access valve	
	16-0832-03	Port cap	
	16-0832-02	Stem cap	
13	16-0850-03	Liquid line fitting	
14	16-0850-01	Discharge line fitting	
15	12-2471-22	Hot gas valve complete	
	12-2719-23	Hot gas valve coil	
	16	11-0422-24	Discharge pressure control valve
	17	16-1063-01	Hot gas valve strainer, not shown

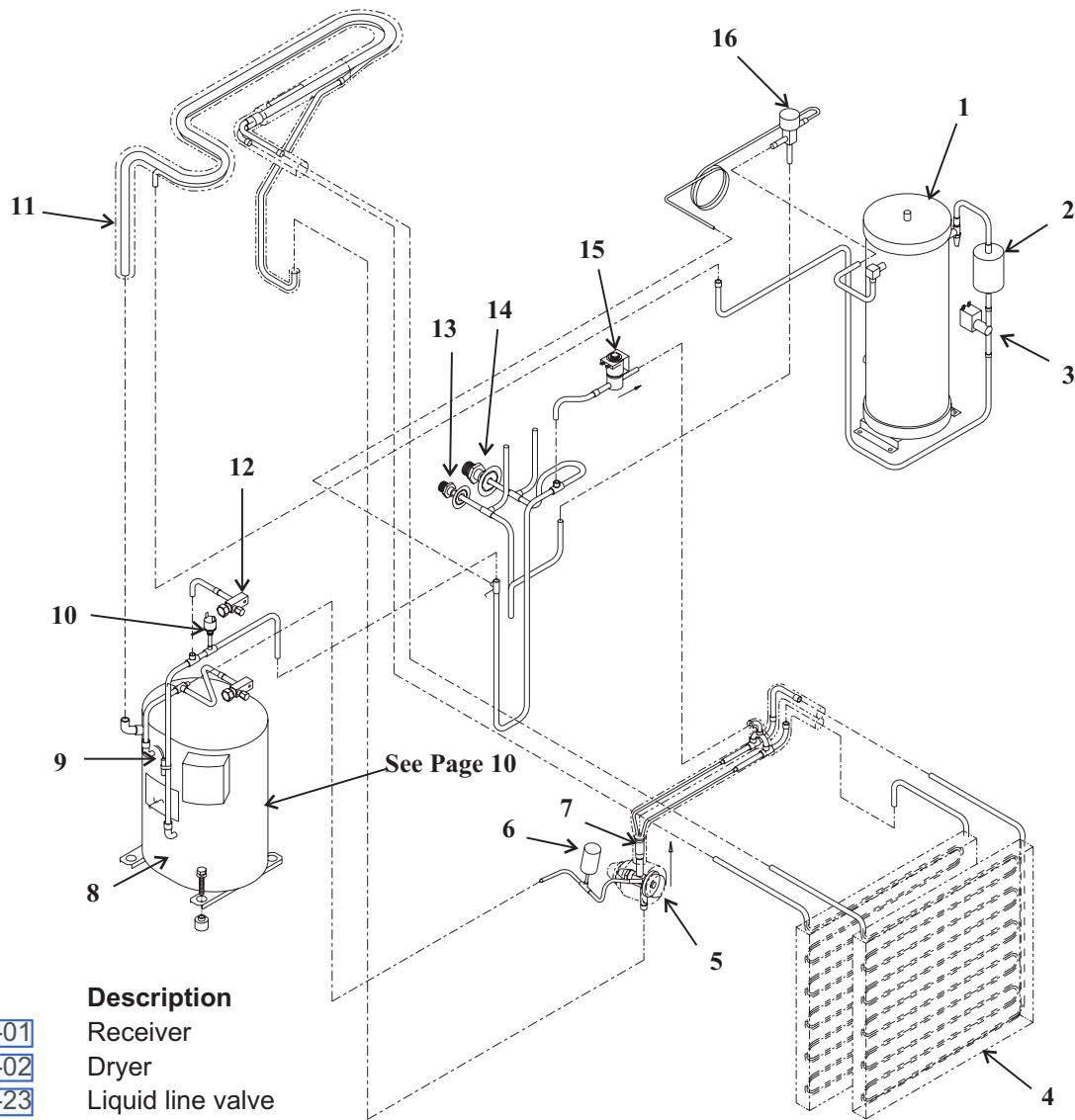


## CME506R E & Higher Series Refrigeration System



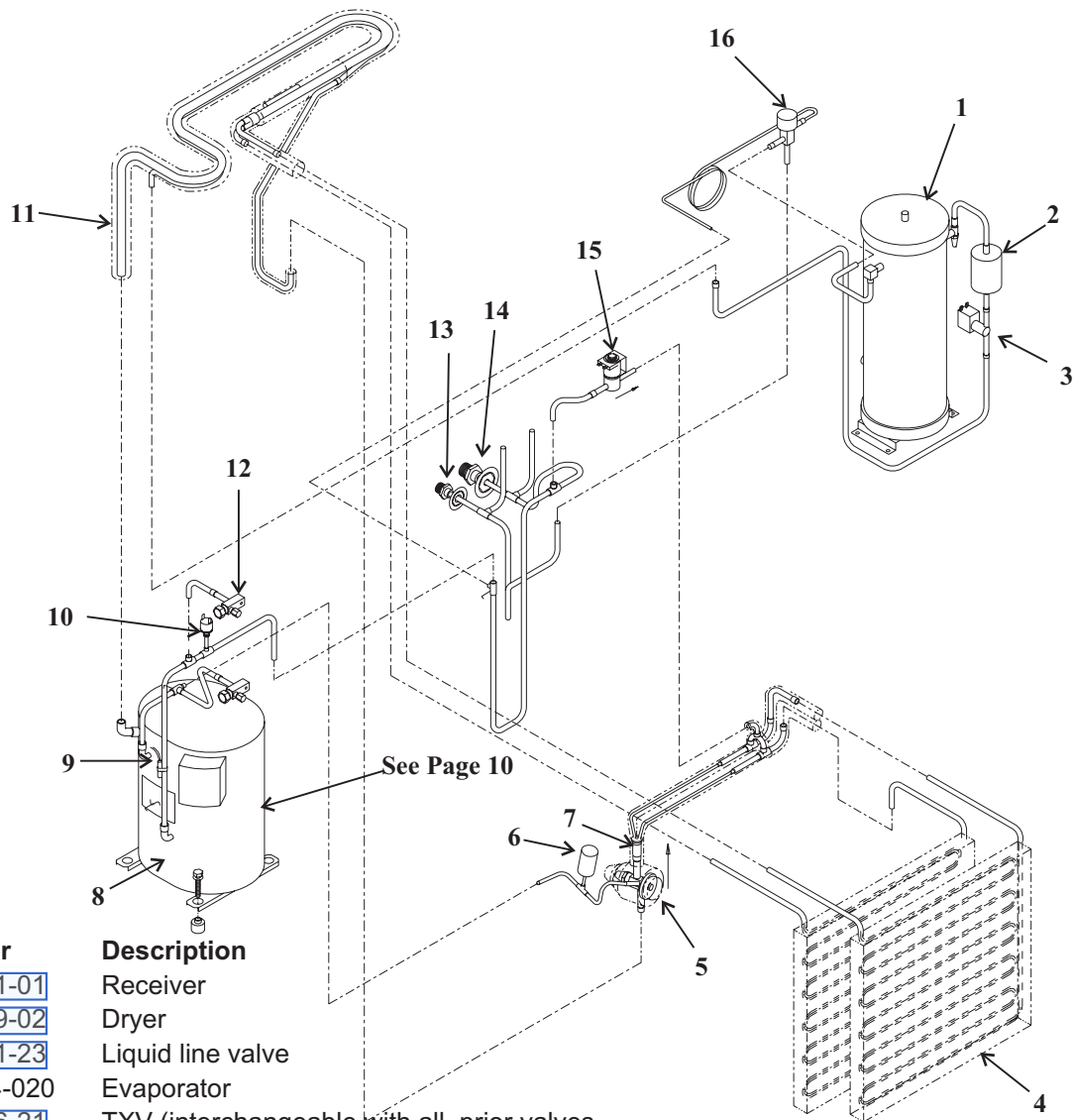
Item Number	Part Number	Description	Item Number	Part Number	Description
1	<a href="#">16-0761-01</a>	Receiver	16	<a href="#">11-0422-24</a>	Discharge pressure control valve
2	<a href="#">02-3319-02</a>	Dryer	17	<a href="#">16-1063-01</a>	Hot gas valve strainer
3	<a href="#">12-2471-23</a>	Liquid line valve	18	<a href="#">16-1071-01</a>	Check valve
4	A36734-020	Evaporator	19	A36427-001	By-pass tubing
5	<a href="#">16-1009-22</a>	TXV - only for E series	20	<a href="#">16-1095-01</a>	Restrictor
	<a href="#">02-3792-01</a>	Insulation for TXV			
6	<a href="#">11-0502-21</a>	Pump down pressure switch			
7	<a href="#">16-0776-01</a>	Tee			
8	<a href="#">12-1868-01</a>	Crankcase heater			
9	<a href="#">02-3410-21</a>	Discharge line temperature sensor, includes water temp sensor & clip			
	<a href="#">03-1711-01</a>	Sensor clip			
10	<a href="#">11-0501-22</a>	Hi pressure cut out switch			
11	<a href="#">16-0778-21</a>	Accumulator			
12	<a href="#">16-0832-20</a>	Access valve			
	<a href="#">16-0832-03</a>	Port cap			
	<a href="#">16-0832-02</a>	Stem cap			
13	<a href="#">16-0850-03</a>	Liquid line fitting			
14	<a href="#">16-0850-01</a>	Discharge line fitting			
15	<a href="#">12-2471-22</a>	Hot gas valve complete			
	<a href="#">12-2719-23</a>	Hot gas valve coil			

## CME656R Refrigeration System



Item Number	Part Number	Description			
1	<a href="#">16-0761-01</a>	Receiver			
2	<a href="#">02-3319-02</a>	Dryer			
3	<a href="#">12-2471-23</a>	Liquid line valve			
4	A36734-020	Evaporator			
5	<a href="#">16-1076-21</a>	TXV (interchangeable with all prior valves)			
	<a href="#">02-2920-01</a>	Insulation for TXV			
6	<a href="#">11-0502-21</a>	Pump down pressure switch	16	<a href="#">11-0422-24</a>	Discharge pressure control valve
7	<a href="#">16-0843-02</a>	Distributor and tubes			
8	<a href="#">12-2308-01</a>	Crankcase heater	17	<a href="#">16-1063-01</a>	Hot gas valve strainer,
9	<a href="#">02-3410-21</a>	Discharge line temperature sensor, includes water temp sensor & clip			not shown
	<a href="#">03-1711-01</a>	Sensor clip			
10	<a href="#">11-0501-22</a>	Hi pressure cut out switch			
11	no number	Suction line			
12	<a href="#">16-0832-20</a>	Access valve			
	<a href="#">16-0832-03</a>	Port cap			
	<a href="#">16-0832-02</a>	Stem cap			
13	<a href="#">16-0850-03</a>	Liquid line fitting			
14	<a href="#">16-0850-01</a>	Discharge line fitting			
15	<a href="#">12-2471-22</a>	Hot gas valve complete			
	<a href="#">12-2719-23</a>	Hot gas valve coil			

## CME806R Refrigeration System

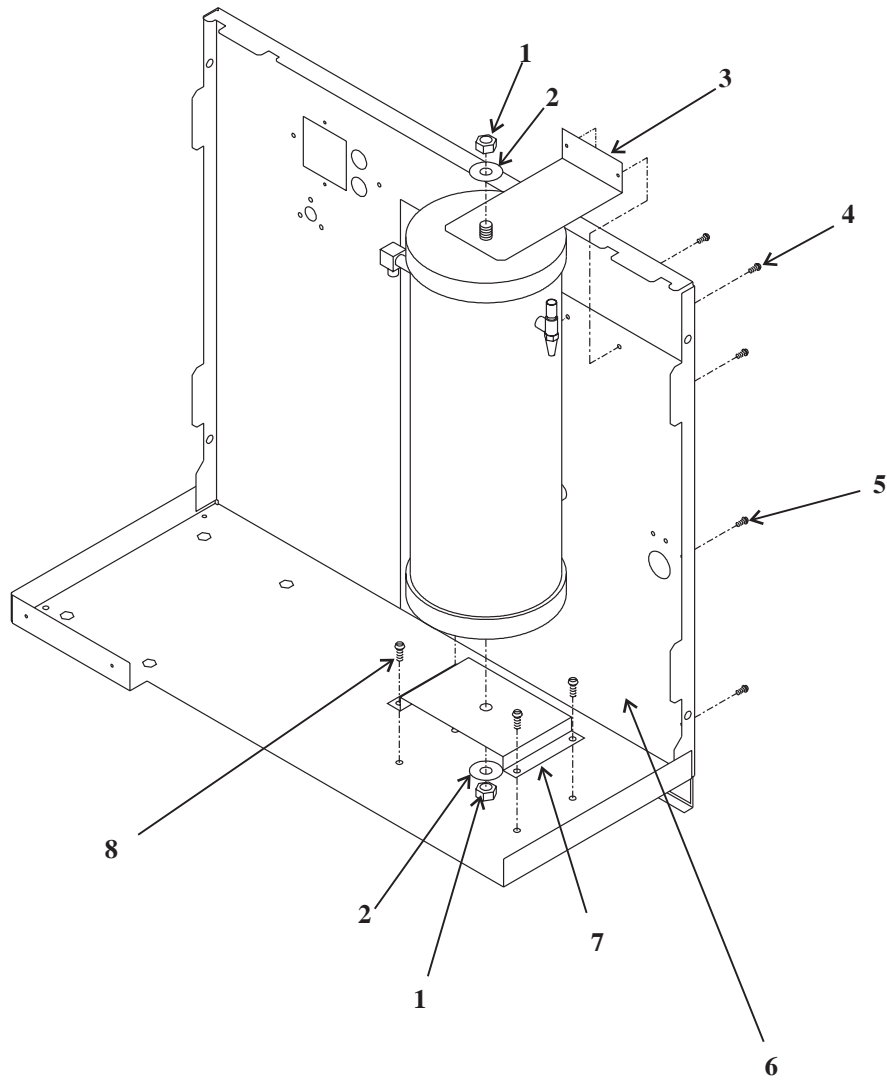


Item Number	Part Number	Description
1	<a href="#">16-0761-01</a>	Receiver
2	<a href="#">02-3319-02</a>	Dryer
3	<a href="#">12-2471-23</a>	Liquid line valve
4	A36734-020	Evaporator
5	<a href="#">16-1076-21</a>	TXV (interchangeable with all prior valves)
	<a href="#">02-3396-01</a>	Insulation for TXV
6	<a href="#">11-0502-21</a>	Pump down pressure switch
7	<a href="#">16-0843-02</a>	Distributor and tubes
8	<a href="#">12-2308-01</a>	Crankcase heater
9	<a href="#">02-3410-21</a>	Discharge line temperature sensor, includes water temp sensor & clip
	<a href="#">03-1711-01</a>	Sensor clip
10	<a href="#">11-0501-22</a>	Hi pressure cut out switch
11	no number	Suction line
12	<a href="#">16-0832-20</a>	Access valve
	<a href="#">16-0832-03</a>	Port cap
	<a href="#">16-0832-02</a>	Stem cap
13	<a href="#">16-0850-03</a>	Liquid line fitting
14	<a href="#">16-0850-01</a>	Discharge line fitting
15	<a href="#">12-2471-24</a>	Hot gas valve complete
	<a href="#">12-2719-23</a>	Hot gas valve coil
16	<a href="#">11-0422-23</a>	Discharge pressure control valve



## CME506R, CME656R & CME806R Service Parts

### Receiver

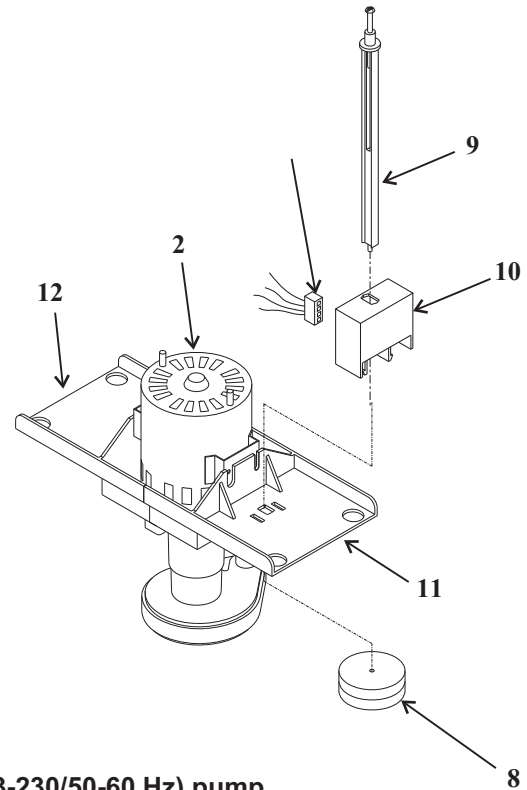
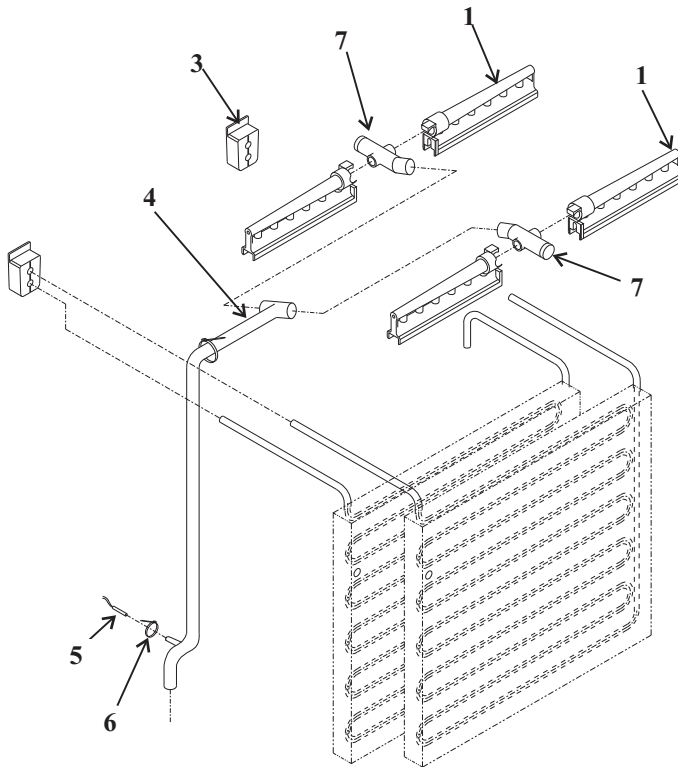


Item Number	Part Number	Description
1	<a href="#">03-1406-13</a>	Nut
2	<a href="#">03-1410-06</a>	Washer
3	A36454-001	Bracket
4	<a href="#">03-1638-03</a>	Screw
5	<a href="#">03-1531-01</a>	Screw
6	A36440-001	Back cover
7	A36021-001	Bracket
8	<a href="#">03-1645-01</a>	Screw



# CME506R, CME656R & CME806R Service Parts

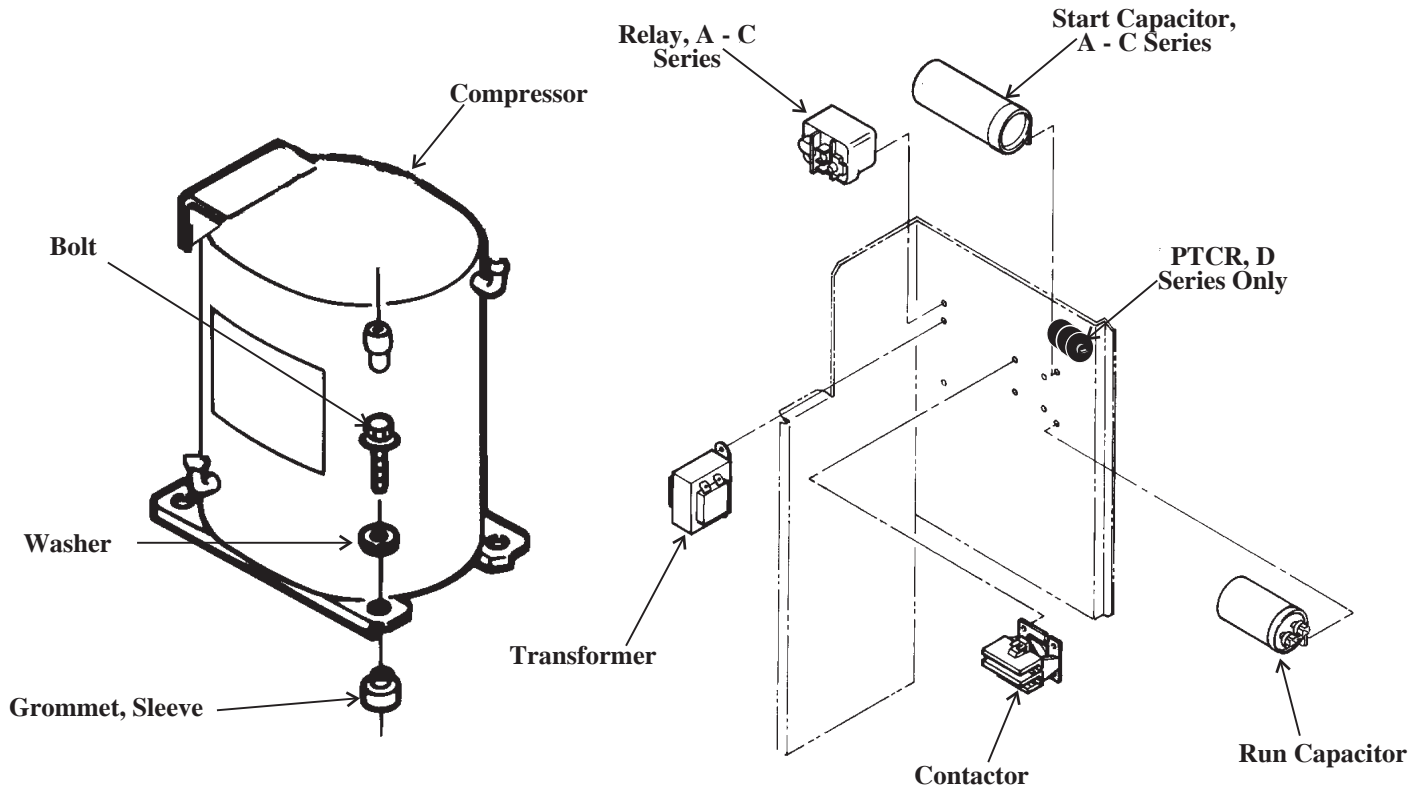
## Water System Components



Item Number	Part Number	Description
1	<a href="#">02-2527-01</a>	Water distributor
2	<a href="#">12-2586-27</a>	<b>CME506-1 pump (115/60 Hz)</b>
	<a href="#">12-2586-23</a>	<b>CME656 or CME506-6 or CME806 (203-230/50-60 Hz) pump</b>
3	<a href="#">13-0898-01</a>	Tubing grommet
4	<a href="#">02-3336-01</a>	Water distributor tube
5	<a href="#">02-3410-21</a>	Water temperature sensor includes disch. temp. sensor
6	no number	Cable tie
7	<a href="#">02-3405-01</a>	Inlet Tee
	<a href="#">13-0840-01</a>	Rubber plug
8	<a href="#">02-3341-01</a>	Float
9	<a href="#">02-3383-02</a>	Float stem grey, non adjustable after 2/97
10	<a href="#">11-0539-51</a>	Float sensor
11	<a href="#">02-3388-04</a>	Front pump bracket for 12-2586 type pump
12	<a href="#">02-3388-05</a>	Rear pump bracket for 12-2586 type pump
13	<a href="#">12-2506-01</a>	Harness

# CME506R, CME656R & CME806R Service Parts

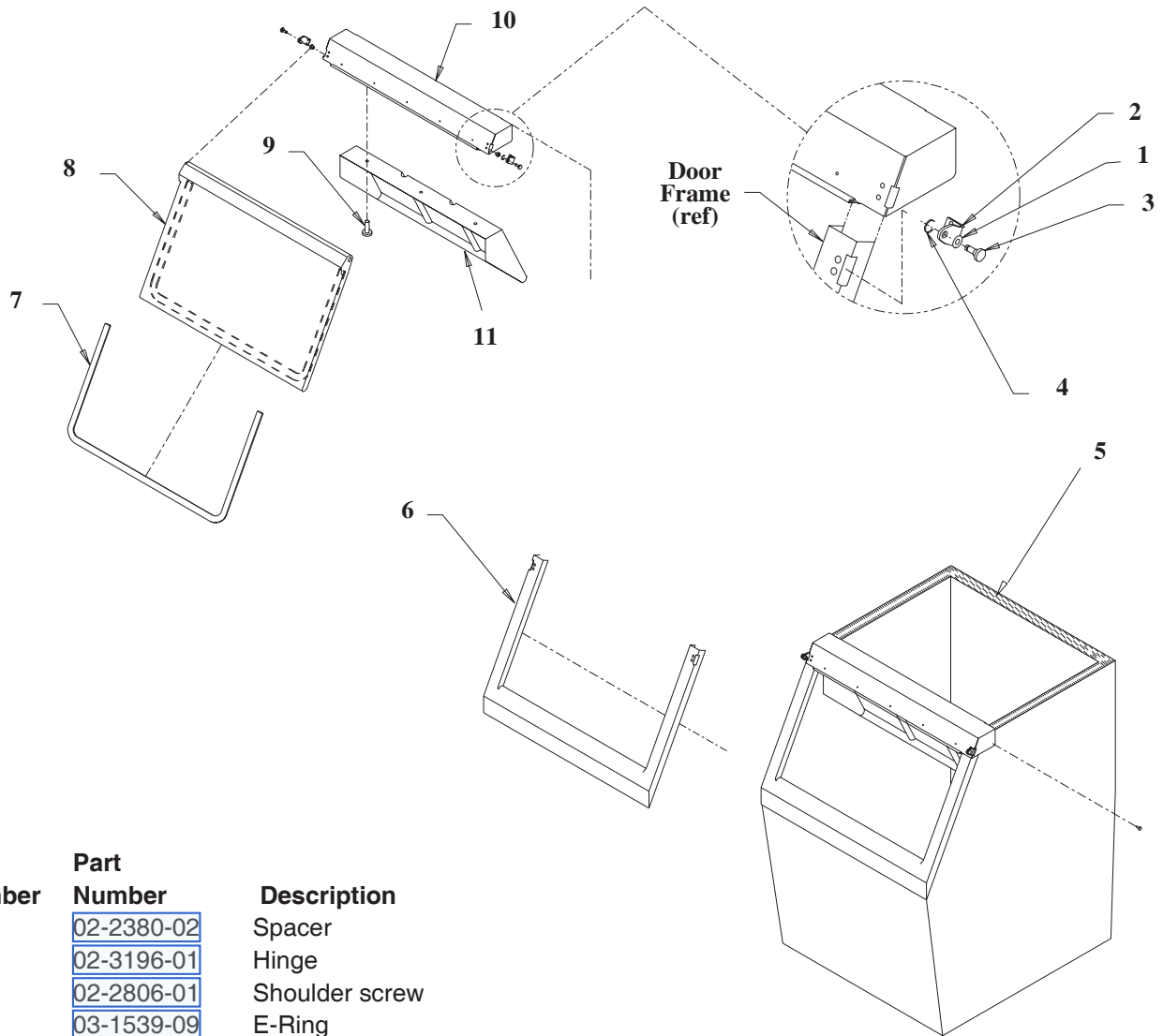
## Compressors and Electrical Components



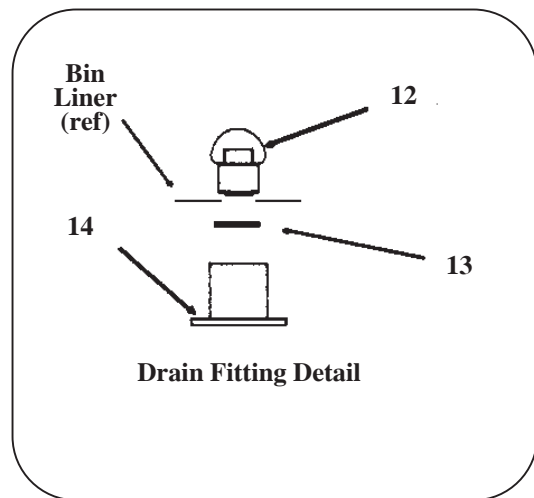
Model	CME506		CME656			CME806	
Voltage/Hz	115/60	250/50	208-230/60	208-230/60	250/50	208-230/60	230/50
Phase	Single	Single	Single	Three	Single	Single	Single
Compressor*	<a href="#">18-8721-21*</a>	<a href="#">18-8721-22</a>	<a href="#">18-8813-23*</a>	<a href="#">18-8813-25</a>	<a href="#">18-8813-27</a>	<a href="#">18-8749-22*</a>	<a href="#">18-8749-27</a>
PTCR** D series	<a href="#">18-8835-01</a>	<a href="#">18-8835-01</a>	<a href="#">18-8835-01</a>	<a href="#">18-8835-01</a>	<a href="#">18-8835-01</a>	<a href="#">18-8835-01</a>	<a href="#">18-8835-01</a>
Start Relay**	<a href="#">18-1903-50</a>	<a href="#">18-1903-29</a>	<a href="#">18-1903-33</a>	not used	<a href="#">18-1903-29</a>	<a href="#">18-1903-46</a>	<a href="#">18-1903-33</a>
Start Capacitor**	<a href="#">18-1901-03</a>	<a href="#">18-1901-43</a>	<a href="#">18-1901-15</a>	not used	<a href="#">18-1901-52</a>	<a href="#">18-1901-48</a>	<a href="#">18-1901-48</a>
Run Capacitor	<a href="#">18-1902-45</a>	<a href="#">18-1902-30</a>	<a href="#">18-1902-53</a>	not used	<a href="#">18-1902-53</a>	<a href="#">18-1902-55</a>	<a href="#">18-1902-55</a>
Overload	<a href="#">18-8711-50</a>	<a href="#">18-8721-50</a>	internal	internal	internal	internal	internal
Mounting Bolt	<a href="#">03-1405-20</a>	<a href="#">03-1405-20</a>	<a href="#">03-1405-20</a>	<a href="#">03-1405-20</a>	<a href="#">03-1405-20</a>	<a href="#">03-1405-20</a>	<a href="#">03-1405-20</a>
Sleeve	<a href="#">18-2200-27</a>	<a href="#">18-2200-27</a>	<a href="#">18-2200-27</a>	<a href="#">18-2200-27</a>	<a href="#">18-2200-27</a>	<a href="#">18-2200-27</a>	<a href="#">18-2200-27</a>
Washer	<a href="#">03-1407-07</a>	<a href="#">03-1407-07</a>	<a href="#">03-1407-07</a>	<a href="#">03-1407-07</a>	<a href="#">03-1407-07</a>	<a href="#">03-1407-07</a>	<a href="#">03-1407-07</a>
Grommet	<a href="#">18-2200-28</a>	<a href="#">18-2200-28</a>	<a href="#">18-2200-28</a>	<a href="#">18-2200-28</a>	<a href="#">18-2200-28</a>	<a href="#">18-2200-28</a>	<a href="#">18-2200-28</a>
Contactor	<a href="#">12-2469-01</a>	<a href="#">12-2469-01</a>	<a href="#">12-2469-01</a>	<a href="#">12-2533-01</a>	<a href="#">12-2469-01</a>	<a href="#">12-2469-01</a>	<a href="#">12-2469-01</a>
Transformer	A37231-001	A37217-001	A37217-001	A37217-001	A37217-001	A37217-001	A37217-001

# CME506R, CME656R & CME806R Service Parts

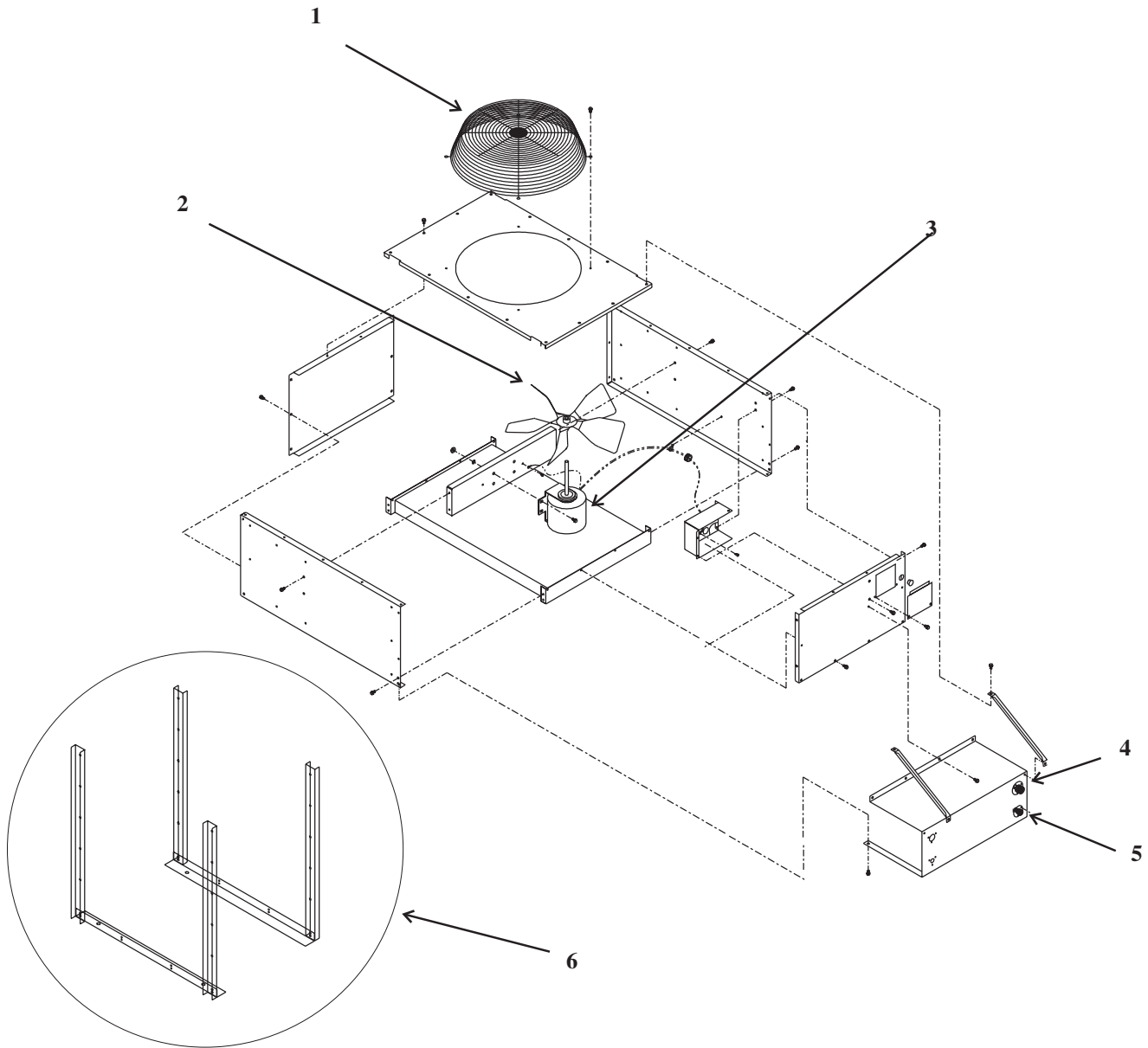
## HTB555 Ice Storage Bin



Item Number	Part Number	Description
1	<a href="#">02-2380-02</a>	Spacer
2	<a href="#">02-3196-01</a>	Hinge
3	<a href="#">02-2806-01</a>	Shoulder screw
4	<a href="#">03-1539-09</a>	E-Ring
5	<a href="#">19-0503-04</a>	Gasket, order 9 units
6	<a href="#">02-3274-02</a>	Door frame - Grey
7	<a href="#">13-0909-01</a>	Door gasket, order 5 units
8	<a href="#">A36481-022</a>	Door - Grey
9	<a href="#">03-0727-11</a>	Thumb screw
10	<a href="#">A35637-001</a>	Canopy
11	<a href="#">A37310001</a>	Baffle
12	<a href="#">02-2809-02</a>	Drain top
13	<a href="#">13-0617-09</a>	O-Ring
14	<a href="#">02-3108-01</a>	Drain bottom
Not shown	<a href="#">05-0586-01</a>	Drain elbow
	<a href="#">02-0540-00</a>	Scoop



## CME506R, CME656R & CME806R Service Parts



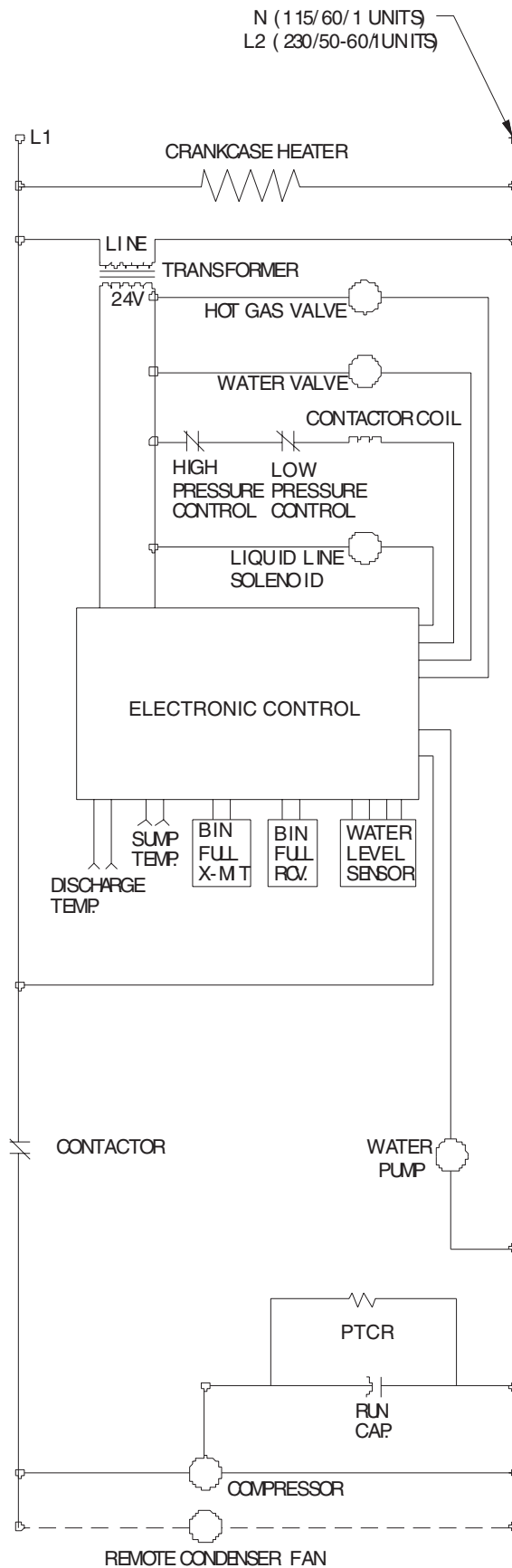
ITEM NUMBER	NUMBER	PART DESCRIPTION
1	<a href="#">02-3575-01</a>	Fan guard
2	<a href="#">18-8800-01</a>	Fan blade
3	<a href="#">18-8796-01</a>	Fan motor ERC101
	<a href="#">18-8796-32</a>	Fan motor ERC201, ERC402
4	<a href="#">16-0850-01</a>	Quick connect, discharge
5	<a href="#">16-0850-03</a>	Quick connect, liquid
6	A36990-001	Leg kit for ERC101, 201
	A36990-002	Leg kit for ERC402

Filters:

<a href="#">02-3231-03</a>	Discharge line
<a href="#">02-3231-02</a>	Liquid line

# CME506R, CME656R & CME806R Service Parts

## D Series, Single Phase Schematic Diagram

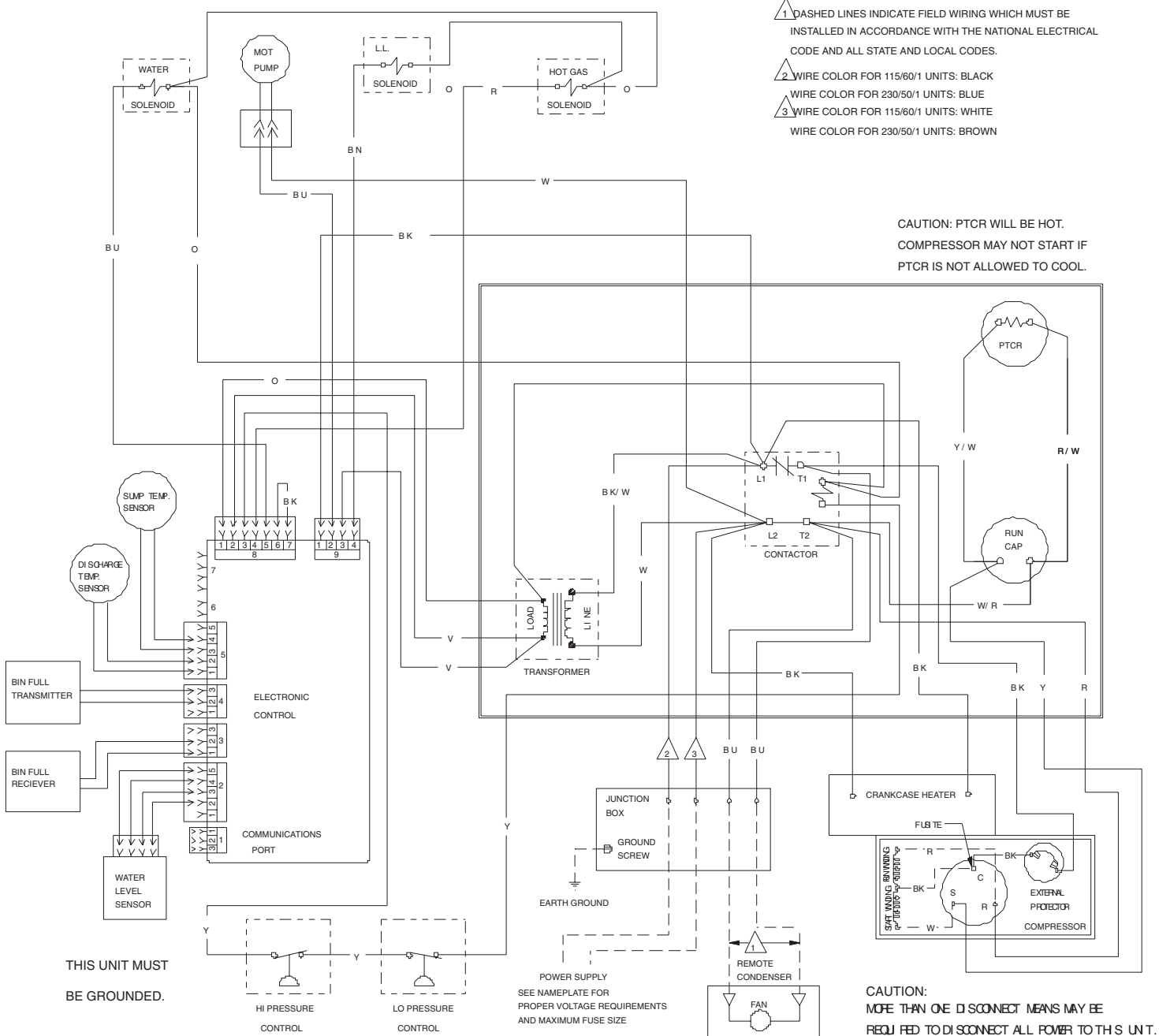


# CME506R, CME656R & CME806R Service Parts

## D Series, CME506R Wiring Diagram

17-2748-01

USE COPPER CONDUCTORS ONLY

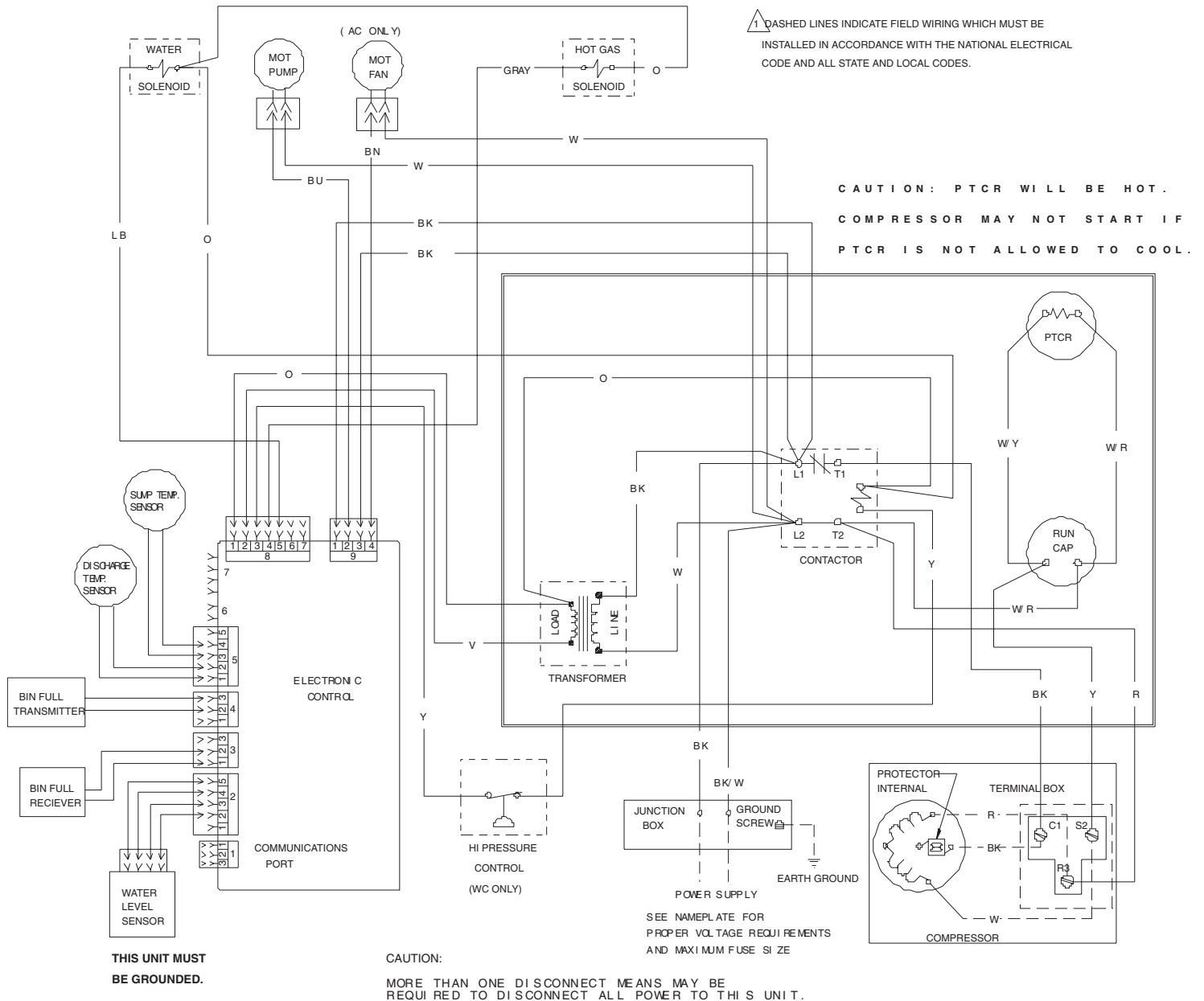


# CME506R, CME656R & CME806R Service Parts

## D Series, CME656R and CME806R Single Phase Wiring Diagram

17-2751-01

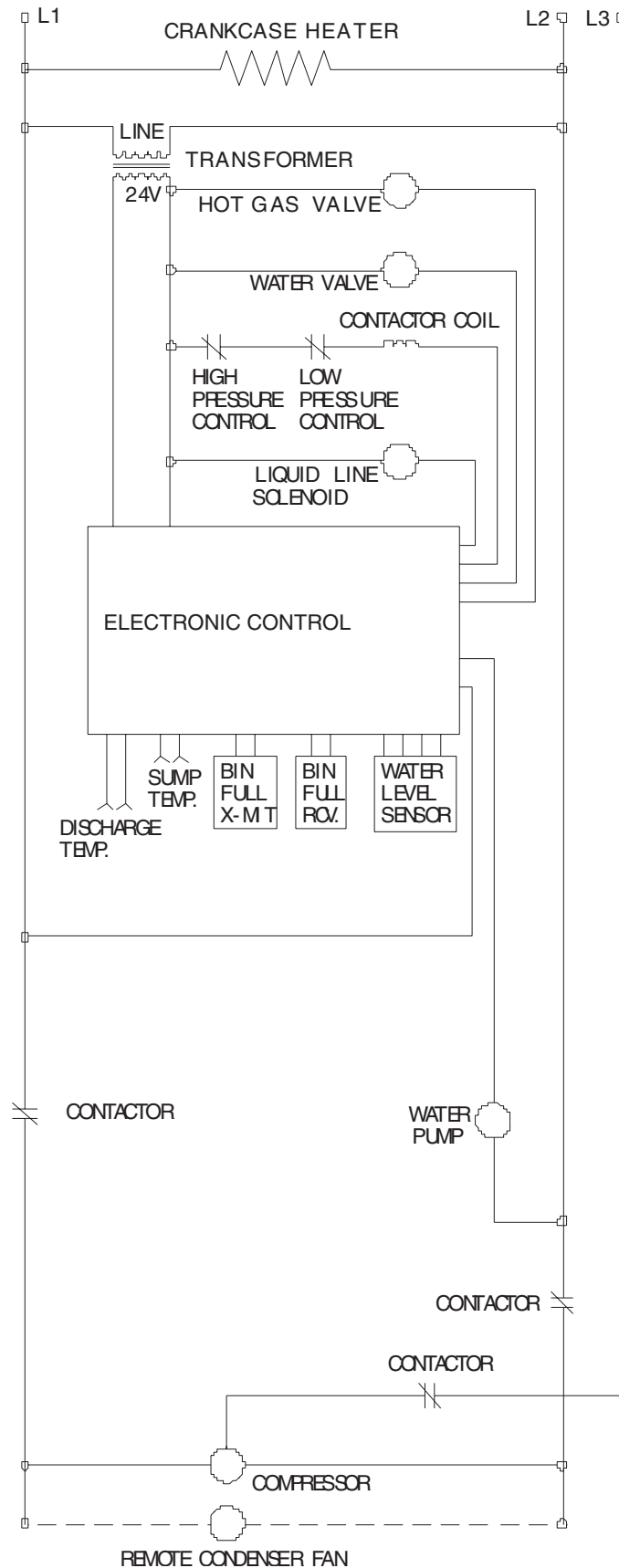
USE COPPER CONDUCTORS ONLY





## CME506R, CME656R & CME806R Service Parts

### D Series, Three Phase Schematic Diagram



March 2002

Page 16

## D Series, Three Phase Wiring Diagram

USE COPPER CONDUCTORS ONLY

**17-2/58-0**

**USE COPPER CONDUCTORS ONLY**

**1** DASHED LINES INDICATE FIELD WIRING WHICH MUST BE INSTALLED IN ACCORDANCE WITH THE NATIONAL ELECTRICAL CODE AND ALL STATE AND LOCAL CODES.

**THIS UNIT MUST BE GROUND.**

**Wiring Diagram Details:**

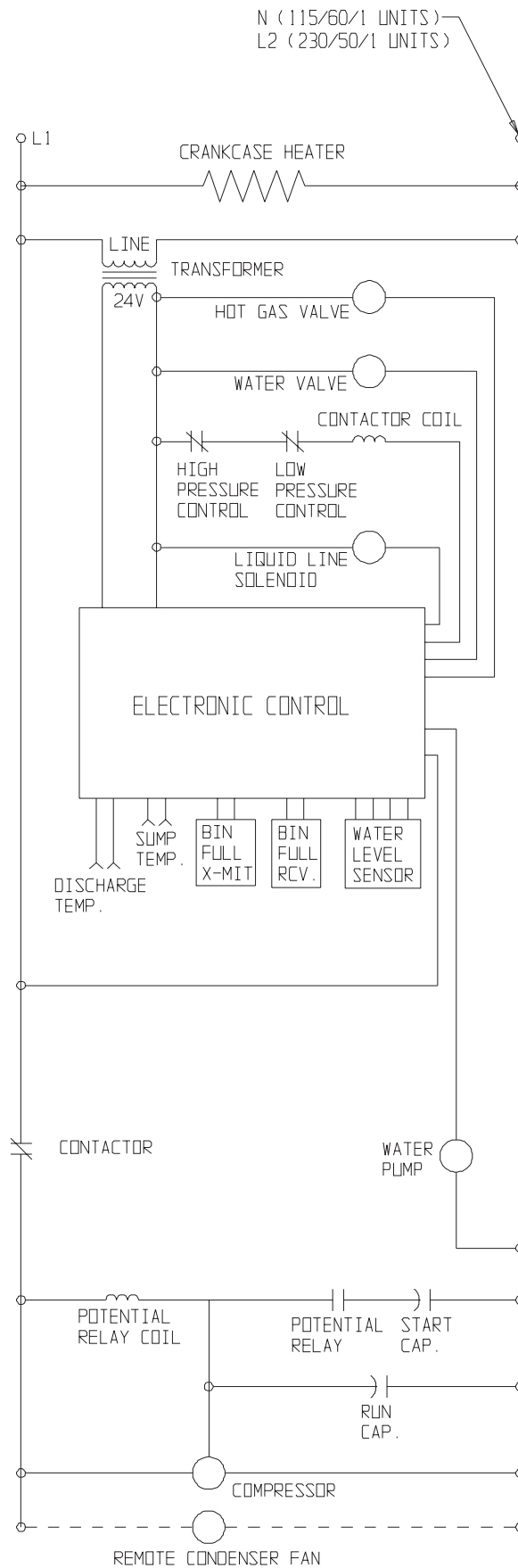
- Power Supply:** Includes a transformer with primary terminals L1, L2, L3 and secondary terminals T1, T2, T3. It is connected to a junction box with terminals BK, BK, BK, BU, BU. The junction box also includes a ground screw and is connected to earth ground.
- Control Components:**
  - Electronic Control:** A central unit with multiple input/output terminals (1-15) connected to various sensors and controls.
  - Communications Port:** Connected to the electronic control.
  - HI Pressure Control:** Connected to the electronic control.
  - LO Pressure Control:** Connected to the electronic control.
- Sensors and Actuators:**
  - Water Level Sensor:** Connected to the electronic control.
  - Discharge Temp Sensor:** Connected to the electronic control.
  - Sump Temp Sensor:** Connected to the electronic control.
  - Water Solenoid:** Connected to the electronic control.
  - Mot Pump:** Connected to the electronic control.
  - Hot Gas Solenoid:** Connected to the electronic control.
- Other Components:**
  - Cranks Case Heater:** Connected to the electronic control.
  - Compressor:** Connected to the electronic control.
  - Remote Condenser:** Connected to the electronic control.
  - Fan:** Connected to the electronic control.

**CAUTION:** MORE THAN ONE DISCONNECT MEANS MAY BE REQUIRED TO DISCONNECT ALL POWER TO THIS UNIT.

CAUTION:  
MORE THAN ONE DISCONNECT MEANS MAY BE  
REQUIRED TO DISCONNECT ALL POWER TO THIS UNIT.

## CME506R, CME656R & CME806R Service Parts

### Single Phase Schematic Diagram, A - C Series

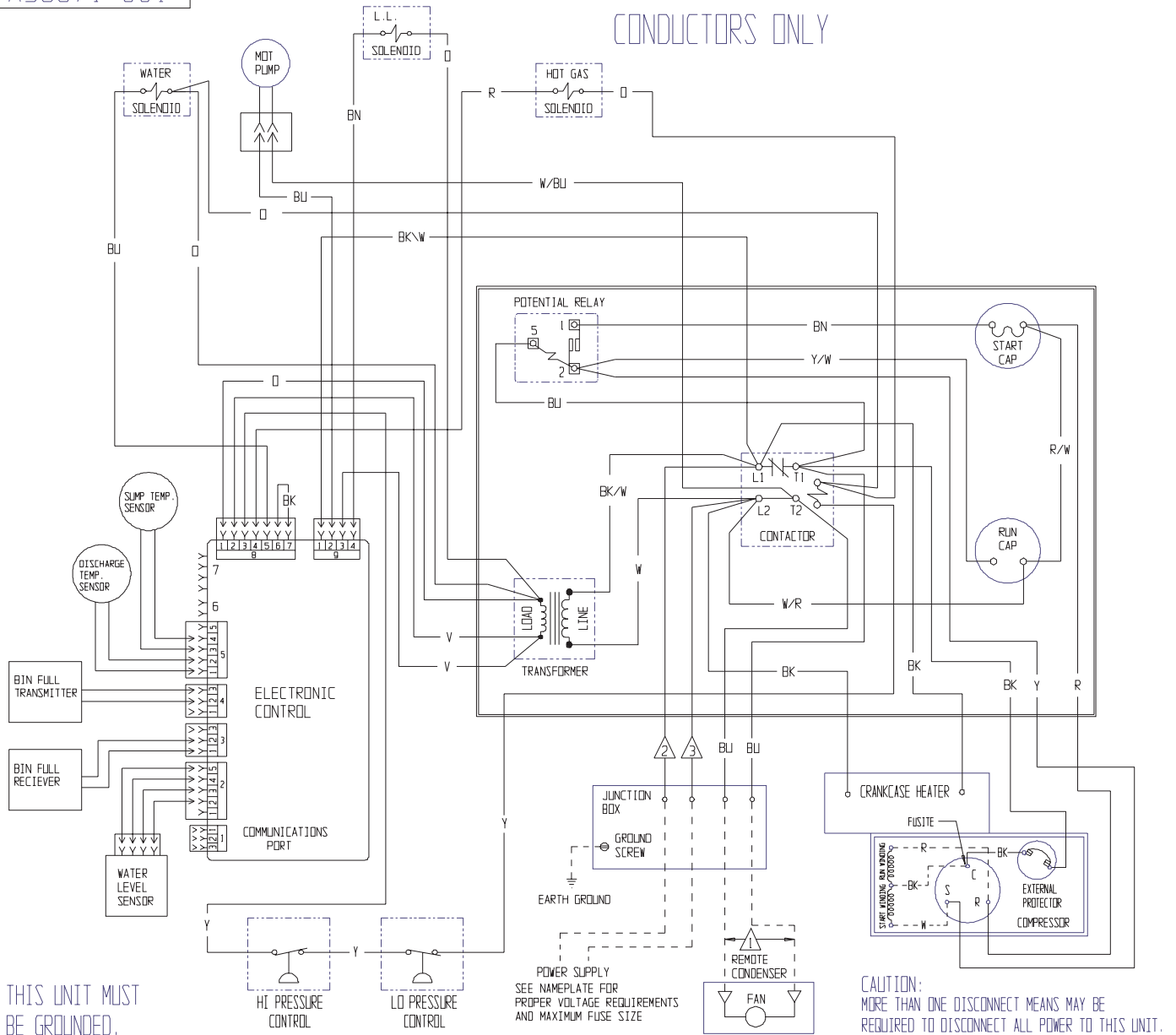


# CME506R, CME656R & CME806R Service Parts

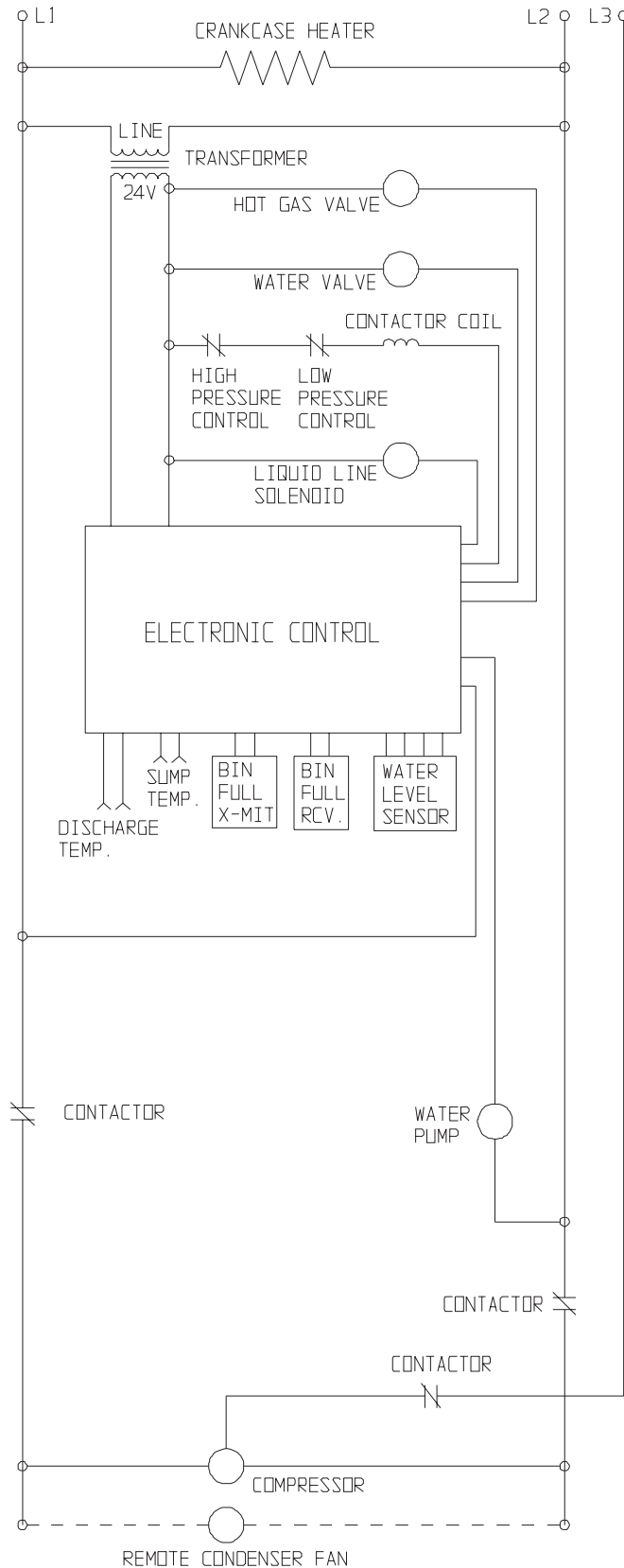
## A -C Series Single Phase Wiring Diagram

A36671-001

USE COPPER  
CONDUCTORS ONLY



## A -C Series Three Phase Schematic Diagram



# A - C Series Three Phase Wiring Diagram

