

# CME650R SERVICE PARTS

This section contains the parts illustrations and parts lists for the CME650R.

CME650R ice machines are manufactured in both single and three phase. When ordering electrical parts, be certain to match the voltage to the ice machine.

Example:

CME650RE-32A is a single phase machine.

CME650RE-3A is a 3 phase machine.

A "no number" designation, when found in the part number column, indicates the part in question is not available from Scotsman as an assembly. This designation is used only for clarity in making the list.

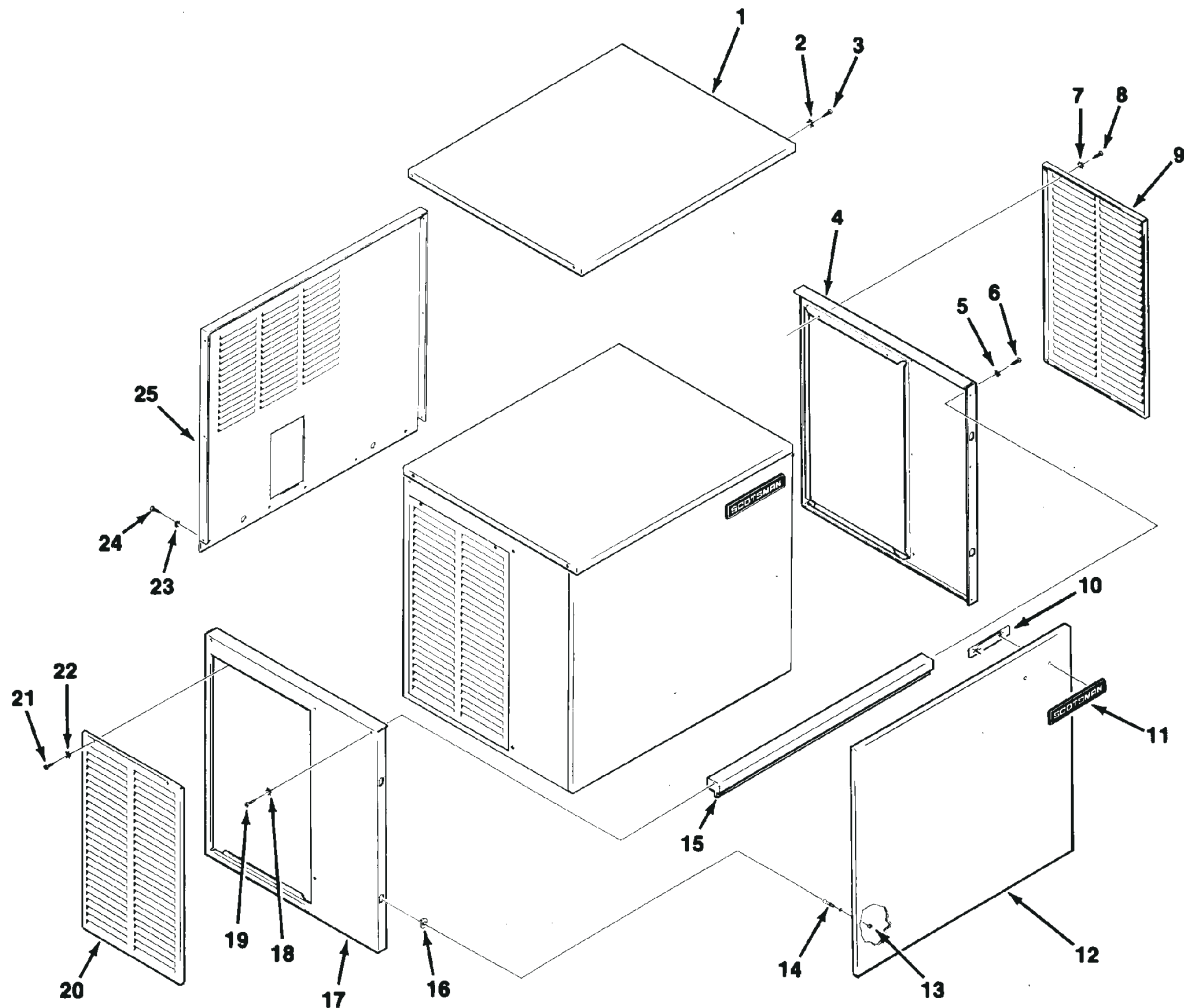
When ordering parts, to avoid costly delays and errors, give the part number, the complete description as shown in the list, and the quantity of each part or assembly required.

## TABLE OF CONTENTS

Exterior Panels . . . . .	2
Interior Panels . . . . .	3
Refrigeration System . . . . .	4
Water System . . . . .	5
Control Box . . . . .	6
Remote Condenser . . . . .	7
Wiring Diagrams . . . . .	8

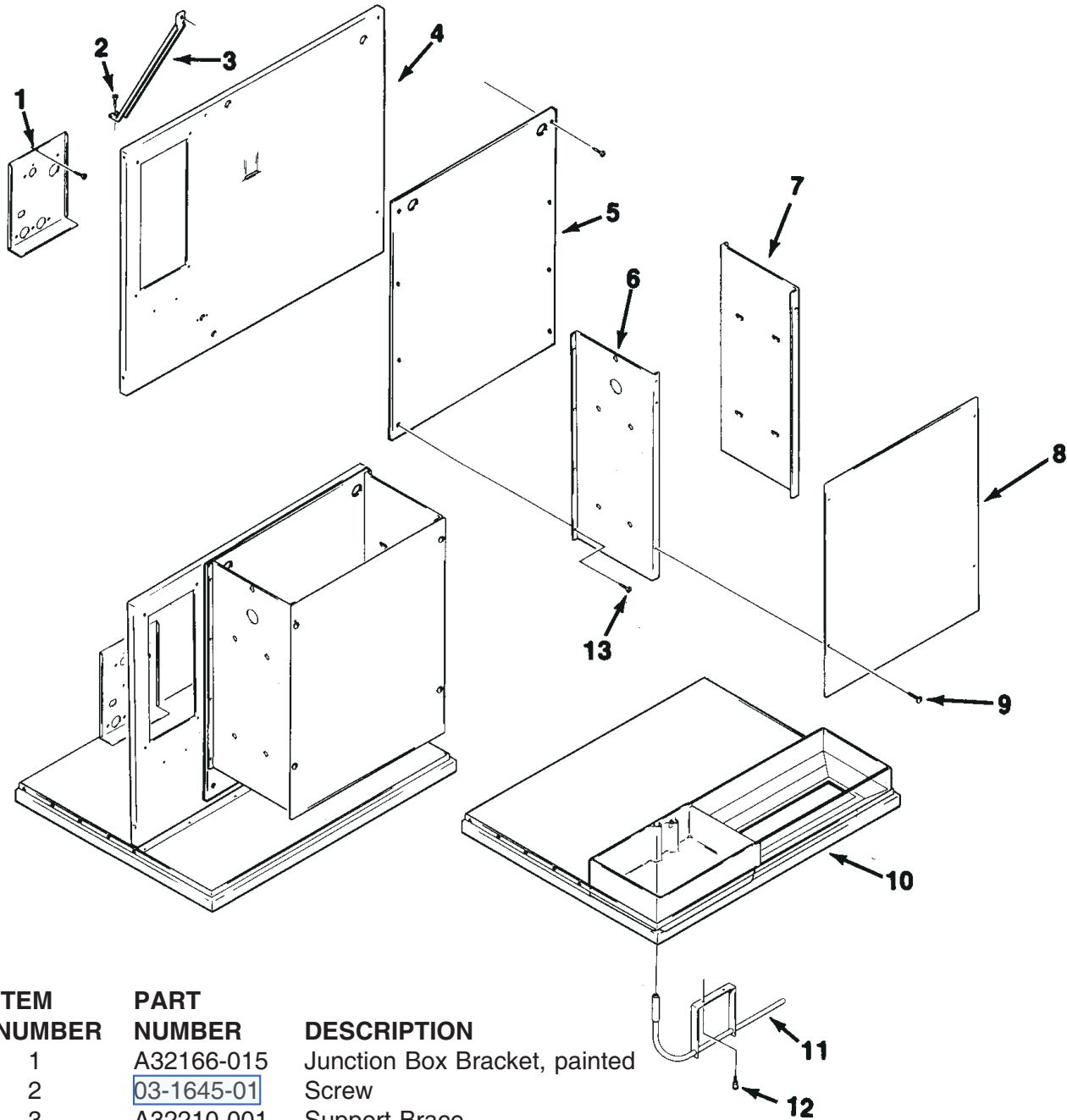
# CME650R SERVICE PARTS

## CABINET ASSEMBLY



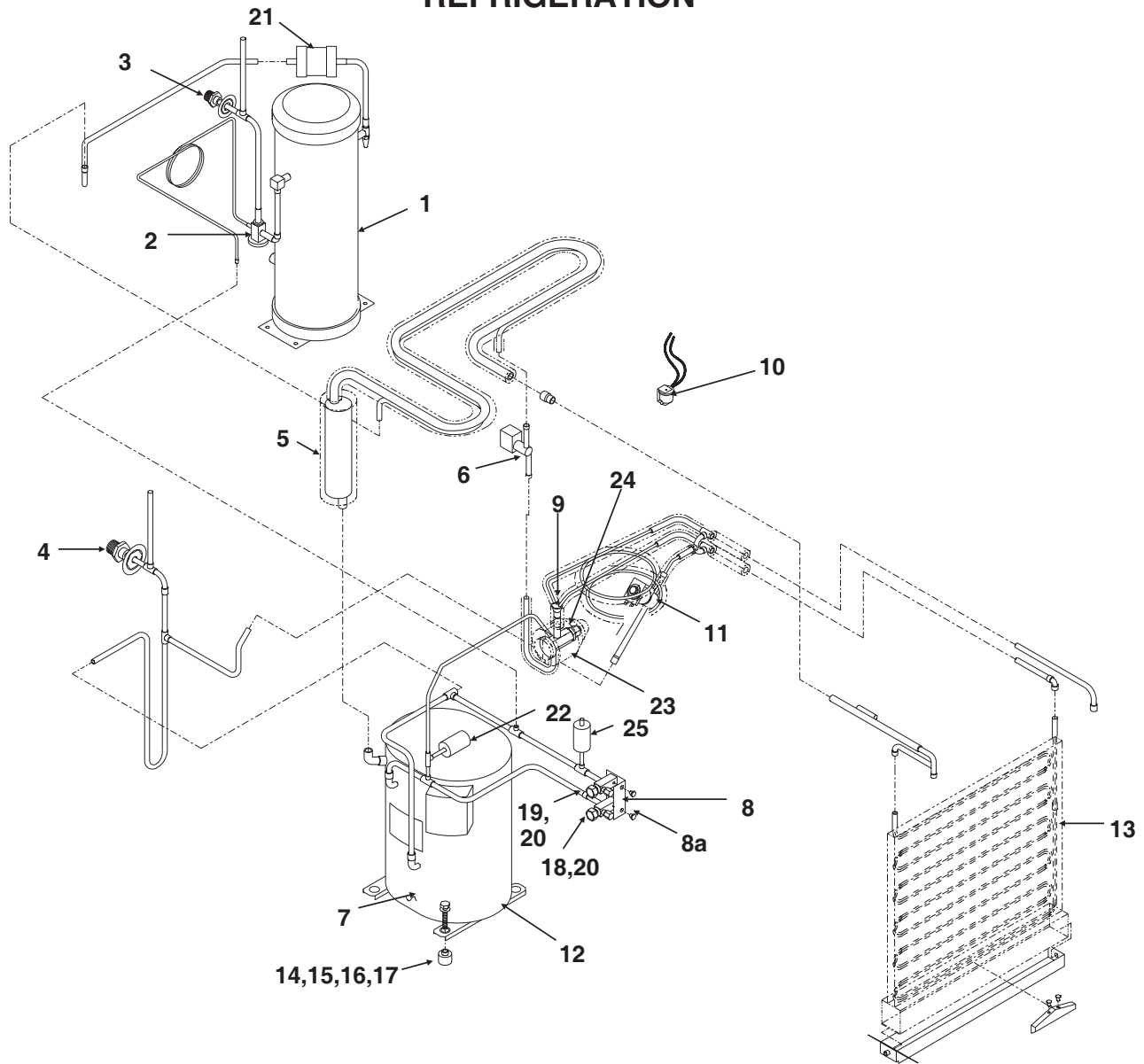
ITEM NUMBER	PART NUMBER	DESCRIPTION	ITEM NUMBER	PART NUMBER	DESCRIPTION
1	A32159-001	Top Panel, Painted	13	<a href="#">03-1406-04</a>	Nut
	A32159-002	Top Panel, S. S.	14	<a href="#">15-0411-00</a>	Strike
2	<a href="#">03-1417-27</a>	Lockwasher	15	A32169-001	Front Support
3	<a href="#">03-1531-01</a>	Screw	16	<a href="#">02-0836-00</a>	Cabinet Catch
4	A32162-001	Right End Panel, Paint	17	A32163-001	Left End Panel, Paint
	A32162-002	Right End Panel, S.S.		A32163-002	Left End Panel, S.S.
5.	<a href="#">03-1417-27</a>	Lockwasher	18	<a href="#">03-1417-27</a>	Lockwasher
6	<a href="#">03-1531-01</a>	Screw	19	<a href="#">03-1531-01</a>	Screw
7	<a href="#">03-1417-27</a>	Lockwasher	20	A32161-001	Service Panel, sandalwood
8	<a href="#">03-1404-12</a>	Screw		A33946-032	Service Panel, gray
9	A32161-001	Service Panel, Painted	21	<a href="#">03-1404-12</a>	Screw
	A33946-002	Service Panel, gray	22	<a href="#">03-1412-27</a>	Lockwasher
10	<a href="#">03-0271-00</a>	Speed Nut	23	<a href="#">03-1417-27</a>	Lockwasher
11	<a href="#">15-0711-01</a>	Emblem for painted	24	<a href="#">03-1531-01</a>	Screw
	<a href="#">15-0808-01</a>	Emblem for stainless steel	25	A32201-003	Back Panel for painted
12	A32160-001	Front Panel, Painted		A32201-002	Back panel for stainless
	A32160-002	Front Panel, S.S.			

# CME650R SERVICE PARTS CABINET INTERIOR



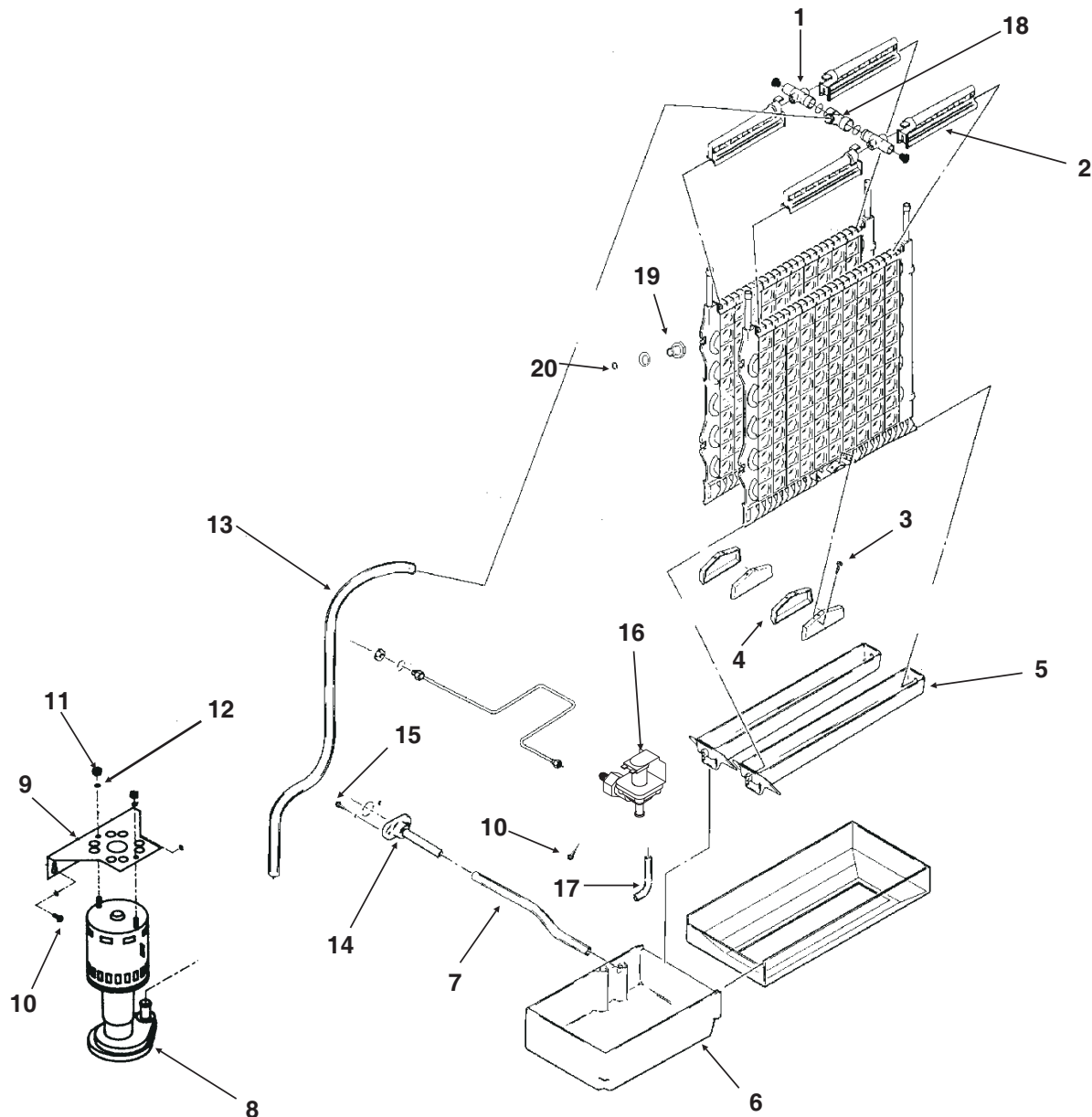
ITEM NUMBER	PART NUMBER	DESCRIPTION
1	A32166-015	Junction Box Bracket, painted
2	<a href="#">03-1645-01</a>	Screw
3	A32210-001	Support Brace
4	A35666-001	Retainer
5	<a href="#">02-2867-01</a>	Splash Panel
6	A35671-001	Evaporator Bracket, Left
7	A32172-001	Evaporator Bracket, Right
8	<a href="#">02-3246-01</a>	Evaporator Plate Cover
9	<a href="#">03-0727-09</a>	Thumbscrew
10	A32153-002	Base
11	A32262-001	Bin Thermostat Bracket
12	<a href="#">03-0727-09</a>	Thumbscrew
13	<a href="#">03-1531-01</a>	Screw

# CME650R SERVICE PARTS REFRIGERATION



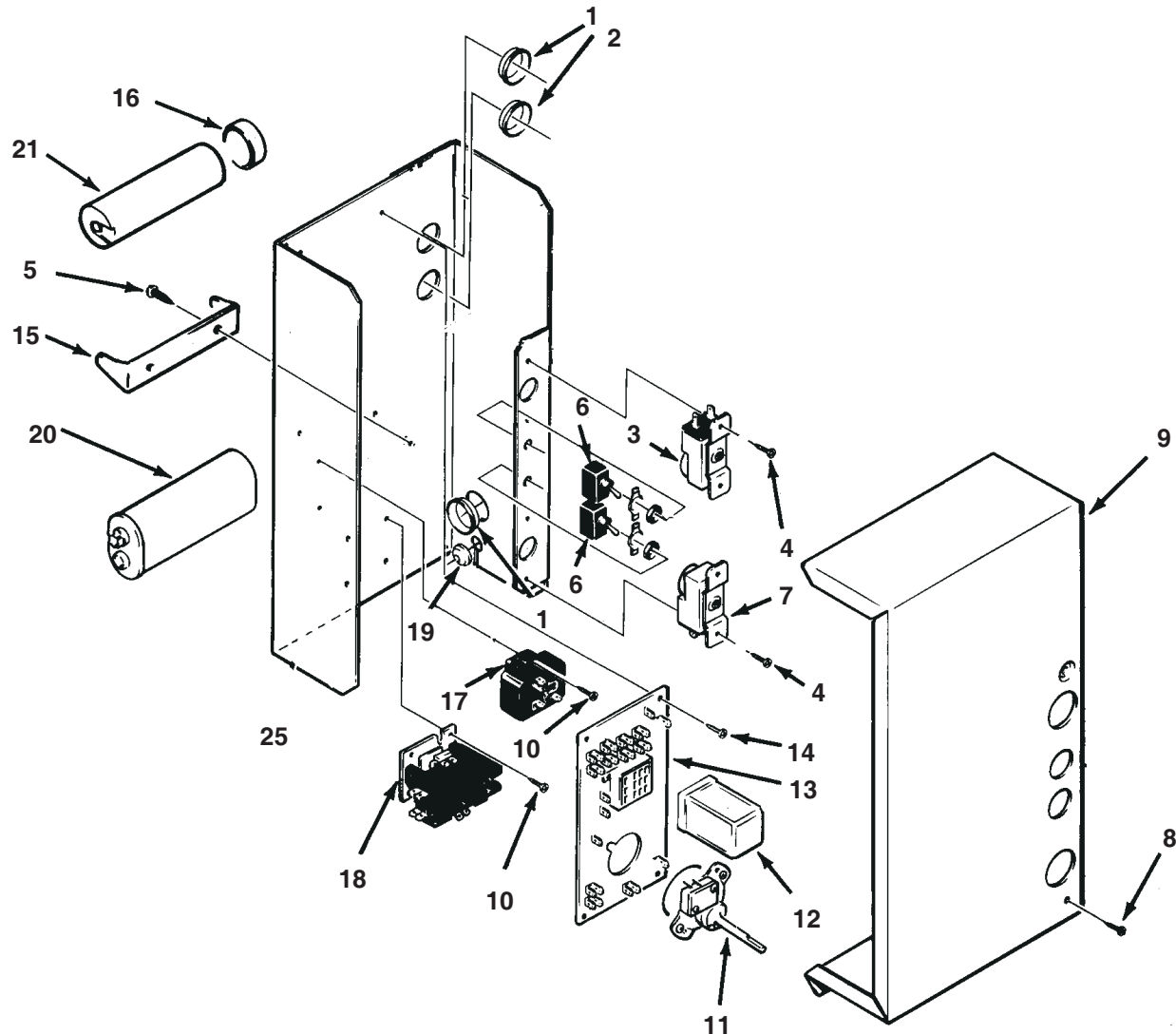
ITEM NUMBER	PART NUMBER	DESCRIPTION	ITEM NUMBER	PART NUMBER	DESCRIPTION
1	<a href="#">16-0761-01</a>	Receiver	13	<a href="#">A30296-020</a>	Evaporator
2	<a href="#">11-0422-24</a>	Disch press. control valve	14	<a href="#">18-2200-28</a>	Grommet
3	<a href="#">16-0850-03</a>	Quick connect fitting, 3/8"	15	<a href="#">18-2200-27</a>	Sleeve
4	<a href="#">16-0850-01</a>	Quick connect fitting, 1/2"	16	<a href="#">03-1407-07</a>	Washer
5	<a href="#">A35841-001</a>	Heat exchanger	17	<a href="#">03-1405-20</a>	Screw
6	<a href="#">12-2135-22</a>	Liquid line solenoid valve	18	<a href="#">16-0832-20</a>	Lo side access valve (w/caps)
7	<a href="#">12-2308-01</a>	Crankcase heater	19	<a href="#">16-0832-21</a>	Hi side access valve (w/caps)
8	<a href="#">A35588-001</a>	Bracket for valves	20	<a href="#">16-0832-02</a>	Stem cap
8a	<a href="#">03-0571-02</a>	Screw for valves		<a href="#">16-0832-03</a>	Core cap
9	<a href="#">16-0844-01</a>	Distributor, includes tubes	21	<a href="#">02-3319-02</a>	Drier
10	<a href="#">12-2300-03</a>	Hi Temp Cut Out	22	<a href="#">11-0484-21</a>	Pump down pressure switch
11	<a href="#">12-2417-23</a>	Hot Gas Valve with coil	23	<a href="#">A36067-001</a>	TXV insulation
12	<a href="#">18-8726-23</a>	208-230/60/1 Compressor	24	<a href="#">16-0867-22</a>	TXV
	<a href="#">18-8726-25</a>	208-230/60/3 Compressor	25	<a href="#">11-0485-21</a>	Hi Pressure Cut Out Switch
Compressors include drier, Overload is internal					

# CME650R SERVICE PARTS WATER SYSTEM



ITEM NUMBER	PART NUMBER	DESCRIPTION	ITEM NUMBER	PART NUMBER	DESCRIPTION
1	A29703-001	Manifold	13	<a href="#">13-0674-07</a>	Pump hose, 33"
2	<a href="#">02-2527-01</a>	Water distributor tube	14	A32282-003	Drain assembly
3	<a href="#">03-1531-01</a>	Screw	15	<a href="#">03-1645-01</a>	Screw
4	<a href="#">02-2878-01</a>	End cover	16	<a href="#">12-2446-24</a>	Inlet water valve
5	<a href="#">02-2868-01</a>	Drain trough	17	A35926-001	Water inlet tube
6	<a href="#">02-2869-01</a>	Reservoir	18	<a href="#">02-2519-01</a>	Tee
7	<a href="#">13-0674-07</a>	Drain hose, 8"	19	<a href="#">02-2642-01</a>	Plate mount
8	<a href="#">12-2265-22</a>	Water pump	20	<a href="#">03-1394-03</a>	Pal nut
9	A35554-015	Pump bracket			
10	<a href="#">03-1531-01</a>	Screw			
11	<a href="#">03-1406-05</a>	Nut			
12	<a href="#">03-1417-06</a>	Lockwasher			

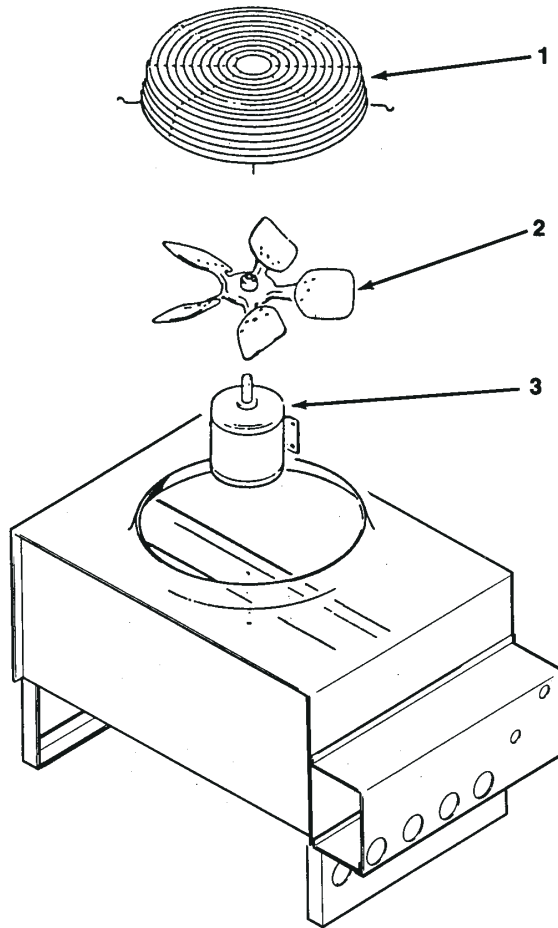
# CME650R SERVICE PARTS CONTROL BOX



ITEM NUMBER	PART NUMBER	DESCRIPTION	ITEM NUMBER	PART NUMBER	DESCRIPTION
1	<a href="#">12-1213-17</a>	Snap bushing	16	<a href="#">18-2200-38</a>	Cap for start capacitor
2	<a href="#">12-1213-10</a>	Snap bushing	17	<a href="#">18-1903-33</a>	Potential relay
3	<a href="#">11-0435-21</a>	Cube size thermostat	18	<a href="#">12-2469-02</a>	Contactor for single phase
4	<a href="#">03-1403-17</a>	Screw		<a href="#">12-0739-02</a>	Contactor for 3 phase
5	<a href="#">03-1418-06</a>	Screw	19	<a href="#">12-1213-04</a>	Snap bushing
6	<a href="#">12-0426-01</a>	Toggle switch	20	<a href="#">18-1902-53</a>	Run capacitor
7	<a href="#">11-0427-22</a>	Bin thermostat		<a href="#">13-0666-00</a>	Cap for run capacitor
8	<a href="#">03-1531-01</a>	Screw		<a href="#">A32872-001</a>	Clamp for run capacitor
9	<a href="#">A32168-001</a>	Control Box Cover	21	<a href="#">18-1901-15</a>	Start capacitor
10	<a href="#">03-1638-03</a>	Screw			
11	<a href="#">12-2317-22</a>	Timer & Switch			
12	<a href="#">12-1879-03</a>	Relay			
13	<a href="#">12-1912-01</a>	Circuit Board			
14	<a href="#">03-1403-02</a>	Screw			
15	<a href="#">18-2200-39</a>	Bracket for start capacitor			

# CME650R SERVICE PARTS

## REMOTE CONDENSER



### RCE651 or RCE652

ITEM NUMBER	PART NUMBER	DESCRIPTION
1	<a href="#">02-2618-01</a>	Fan Guard
2	<a href="#">18-6304-01</a>	Fan Blade
3	<a href="#">18-5301-01</a>	Fan Motor

For Pre Charged Line Set

4	<a href="#">16-1057-01</a>	Female coupling (3/8")
5	<a href="#">16-1057-02</a>	Female coupling (1/2")

### ERC201 or ERC402

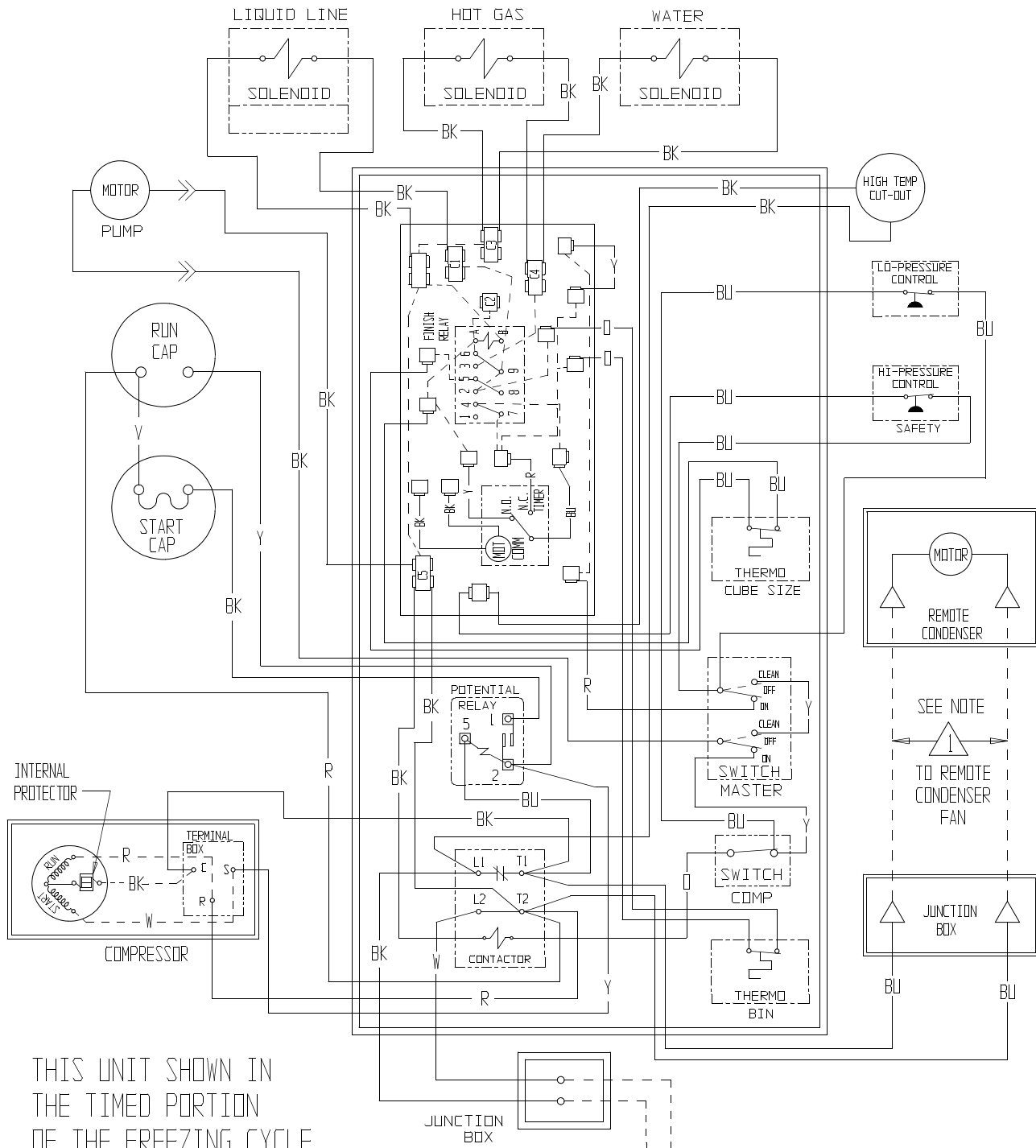
1	<a href="#">02-3575-01</a>	Fan guard
2	<a href="#">18-8800-01</a>	Fan blade
3	<a href="#">18-8796-32</a>	Fan motor

# CME650R SERVICE PARTS

## Single Phase WIRING DIAGRAM

A35941-032

THIS UNIT MUST BE GROUNDED



THIS UNIT SHOWN IN  
THE TIMED PORTION  
OF THE FREEZING CYCLE

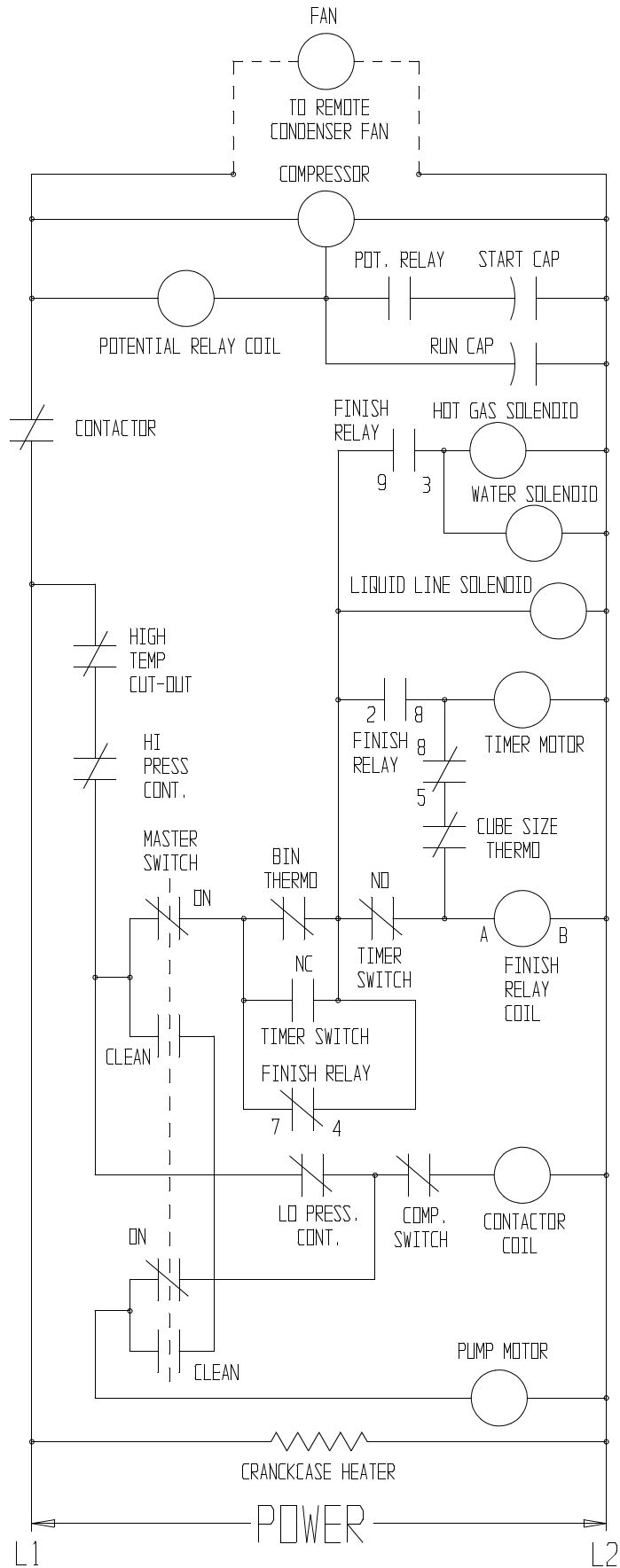
USE COPPER CONDUCTORS ONLY

POWER SUPPLY:  
SEE NAMEPLATE FOR PROPER VOLTAGE  
REQUIREMENTS AND MAXIMUM FUSE SIZE



# CME650R SERVICE PARTS

## Single Phase SCHEMATIC DIAGRAM

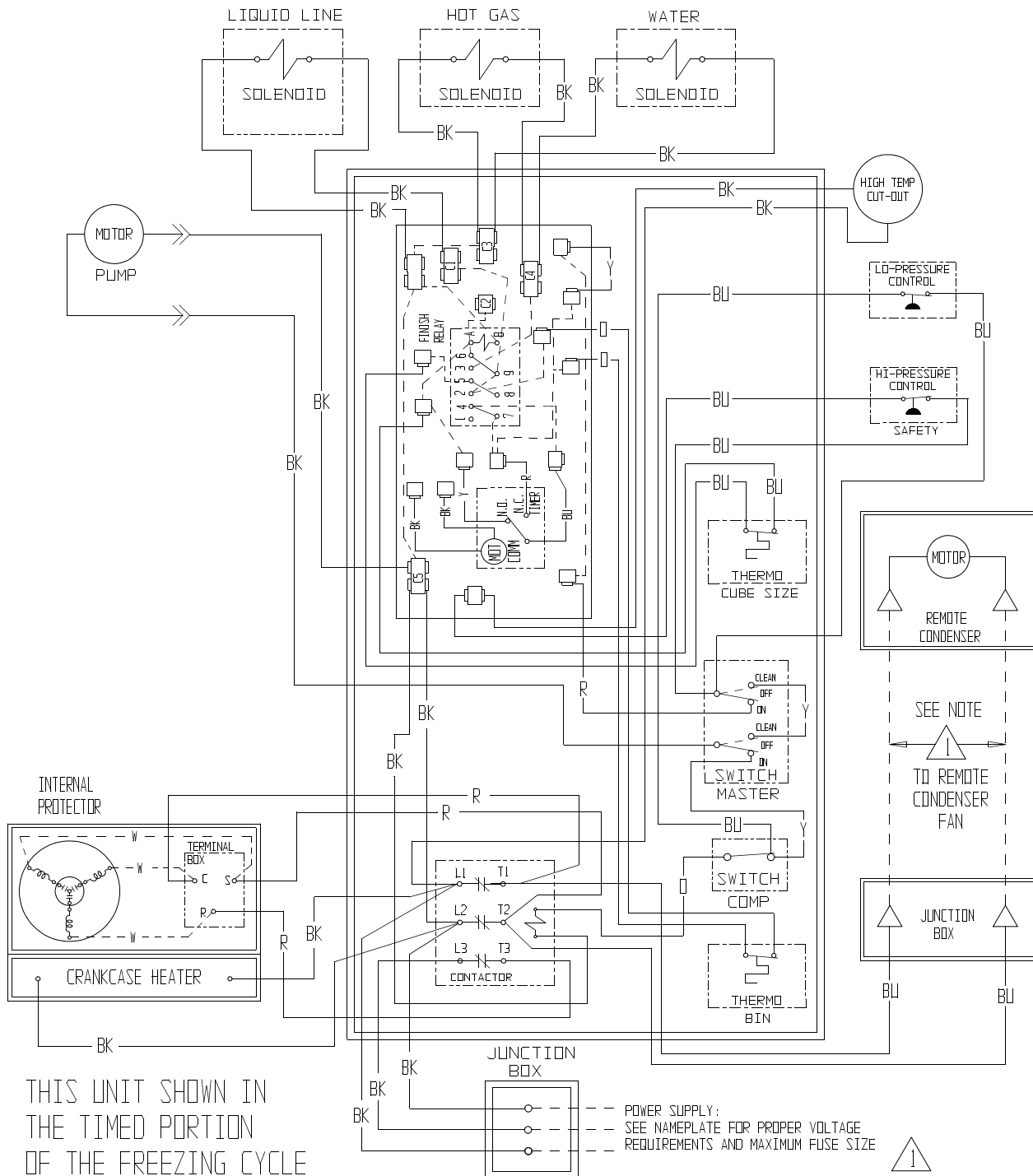


# CME650R SERVICE PARTS

## 3 Phase Wiring Diagram

A35941-003

THIS UNIT MUST BE GROUNDED



# CME650R SERVICE PARTS

## 3 Phase Schematic Diagram

