

# CMS1202R SERVICE PARTS

This parts lists shows the service parts for the CMS1202R Remote.

Check the model number of the machine to be certain of obtaining the correct part.

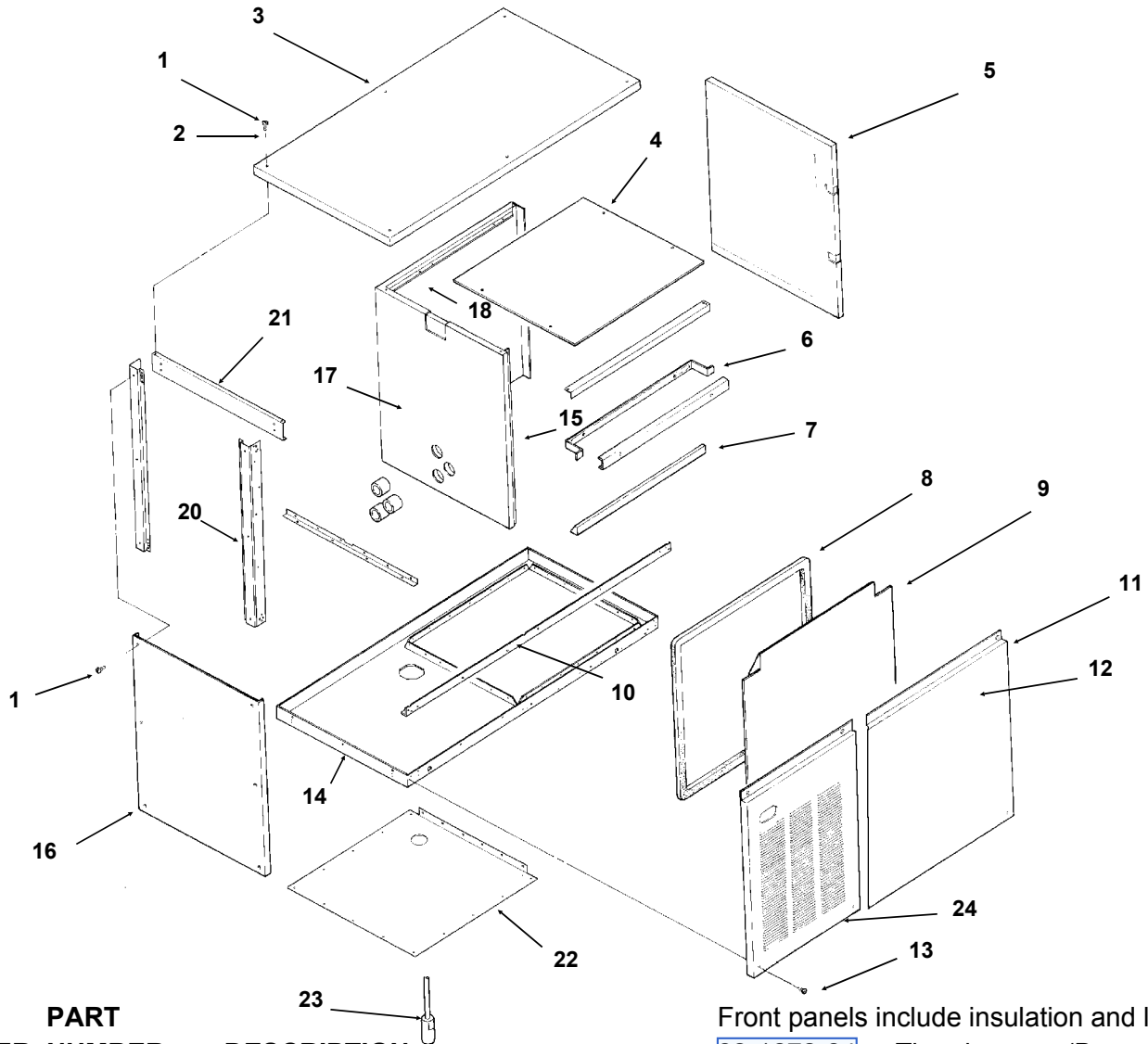
Included at the back of the parts list are the wiring diagrams.

## Table of Contents

Cabinet . . . . .	Page 2
Refrigeration System . . . . .	Page 3
Remote Condenser . . . . .	Page 4
Control Box . . . . .	Page 6
BH900 Bin . . . . .	Page 7
Wiring Diagrams . . . . .	Page 8

# CMS1202R SERVICE PARTS

## CABINET PARTS



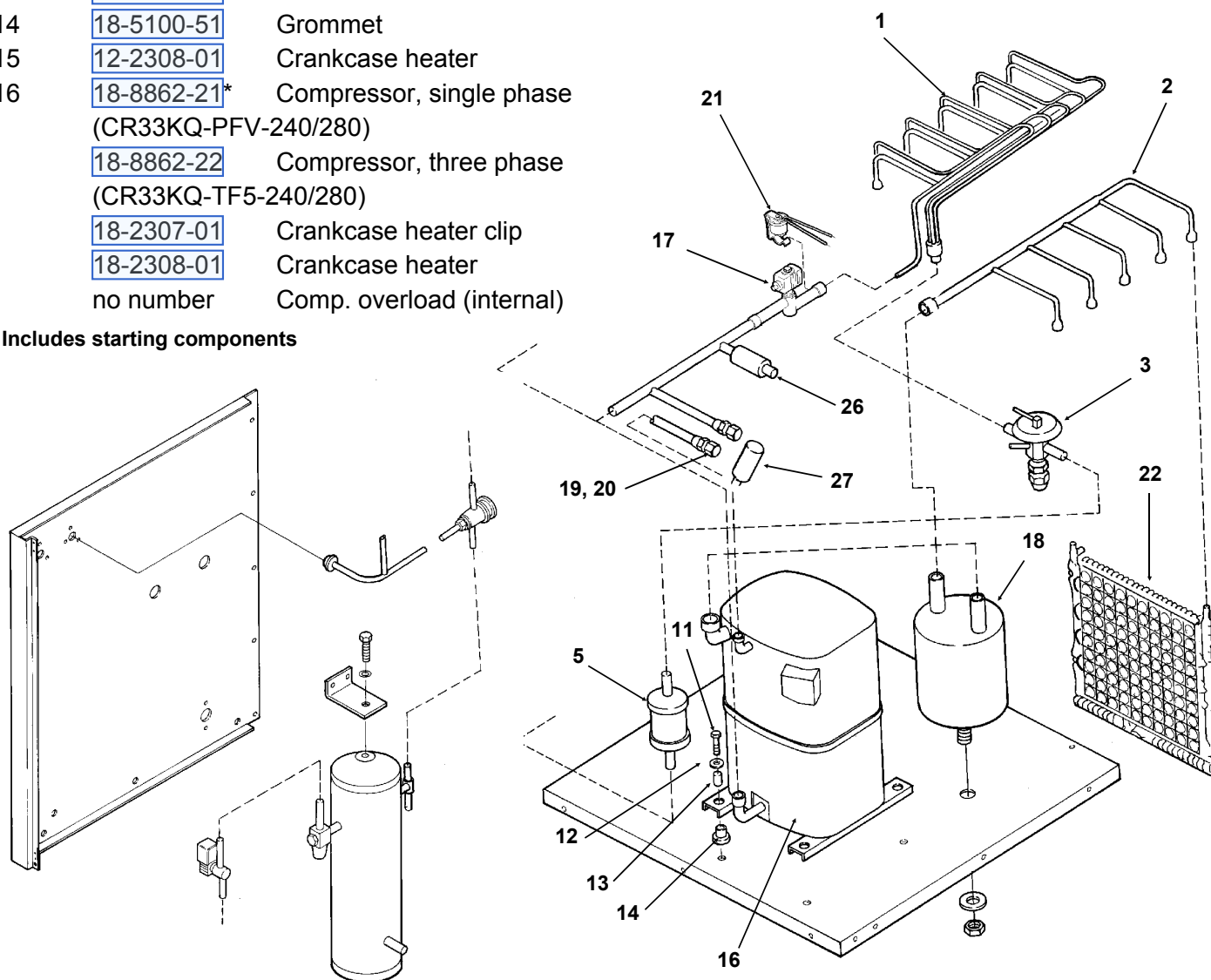
ITEM NUMBER	PART NUMBER	DESCRIPTION			
1	<a href="#">03-1531-01</a>	Screws			Front panels include insulation and liner
2	<a href="#">03-1417-27</a>	Washers			<a href="#">03-1678-04</a> Thumb screw (B model)
3	A35074-001	Panel top (enamel)	12		<a href="#">03-1678-03</a> Screw retainer (B model)
	A35074-002	Panel top (stainless)	13		<a href="#">02-3252-01</a> Plastic bumper (B model)
4	A33364-001	Liner top	14		<a href="#">15-0711-01</a> Emblem
5	A29164-003	Right panel (enamel)	15		<a href="#">03-1404-19</a> Screws
	A29164-002	Right panel (stainless)	16		A35110-001 Base assembly
6	A29204-001	Brace front	17		<a href="#">02-2533-01</a> Liner, left side
7	<a href="#">02-2532-01</a>	Liner cap	18		A35075-001 Left side panel, enamel
8	<a href="#">13-0595-00</a>	Gasket (order per foot)	19		A35075-002 Left side panel, stainless
9	<a href="#">02-2795-01</a>	Liner, front panel	20		no number Retainer
10	<a href="#">03-1678-01</a>	Speed clip (B model)	21		<a href="#">02-2531-01</a> Liner back
11	A35080-021	Front panel (enamel)	22		<a href="#">02-2534-01</a> Right side liner
	A35080-022	Front panel, (stainless)	23		A35069-001 Corner post
	A35401-022	B mod right front panl, stainless	24		A35066-001 Brace
	A35401-021	B mod right front panel, painted			<a href="#">02-3151-01</a> Plastic cover
					A34908-021 Transducer
					A35400-001 B model left frnt pnl, painted

# CMS1202R SERVICE PARTS

## REFRIGERATION SYSTEM

ITEM NUMBER	PART NUMBER	DESCRIPTION	ITEM NUMBER	PART NUMBER	DESCRIPTION
1	A35122-001	Evap. manifold assy	17	12-2135-22	Hot gas valve
2	16-0887-01	Manifold assy		02-3231-03	Hot gas valve filter
3	16-0816-21	Expansion valve	18	16-0817-21	Accumulator
	13-0617-51	O-Ring	19	16-0560-00	Valve core
	02-2920-01	Foam insulation	20	16-0563-00	Valve cap
4	12-2274-01	Liquid line solenoid valve	21	12-2300-07	Hi temp cut out
5	02-3319-01	Drier	22	A30296-020	Evaporator plate
6	16-0761-01	Receiver	23	16-0850-01	Discharge quick connect
7	A35072-001	Receiver bracket	24	16-0850-03	Liquid quick connect
8	03-1410-06	Lockwasher	25	A35070-001	Back panel
9	03-1406-13	Nut	26	11-0446-25	Hi pressure cut out
10	11-0422-22	Head pressure reg. valve	27	11-0467-21	Pump down control
11	03-1405-20	Screw			
12	03-1407-07	Washer			
13	18-2200-28	Sleeve			
14	18-5100-51	Grommet			
15	12-2308-01	Crankcase heater			
16	18-8862-21*	Compressor, single phase (CR33KQ-PFV-240/280)			
	18-8862-22	Compressor, three phase (CR33KQ-TF5-240/280)			
	18-2307-01	Crankcase heater clip			
	18-2308-01	Crankcase heater			
	no number	Comp. overload (internal)			

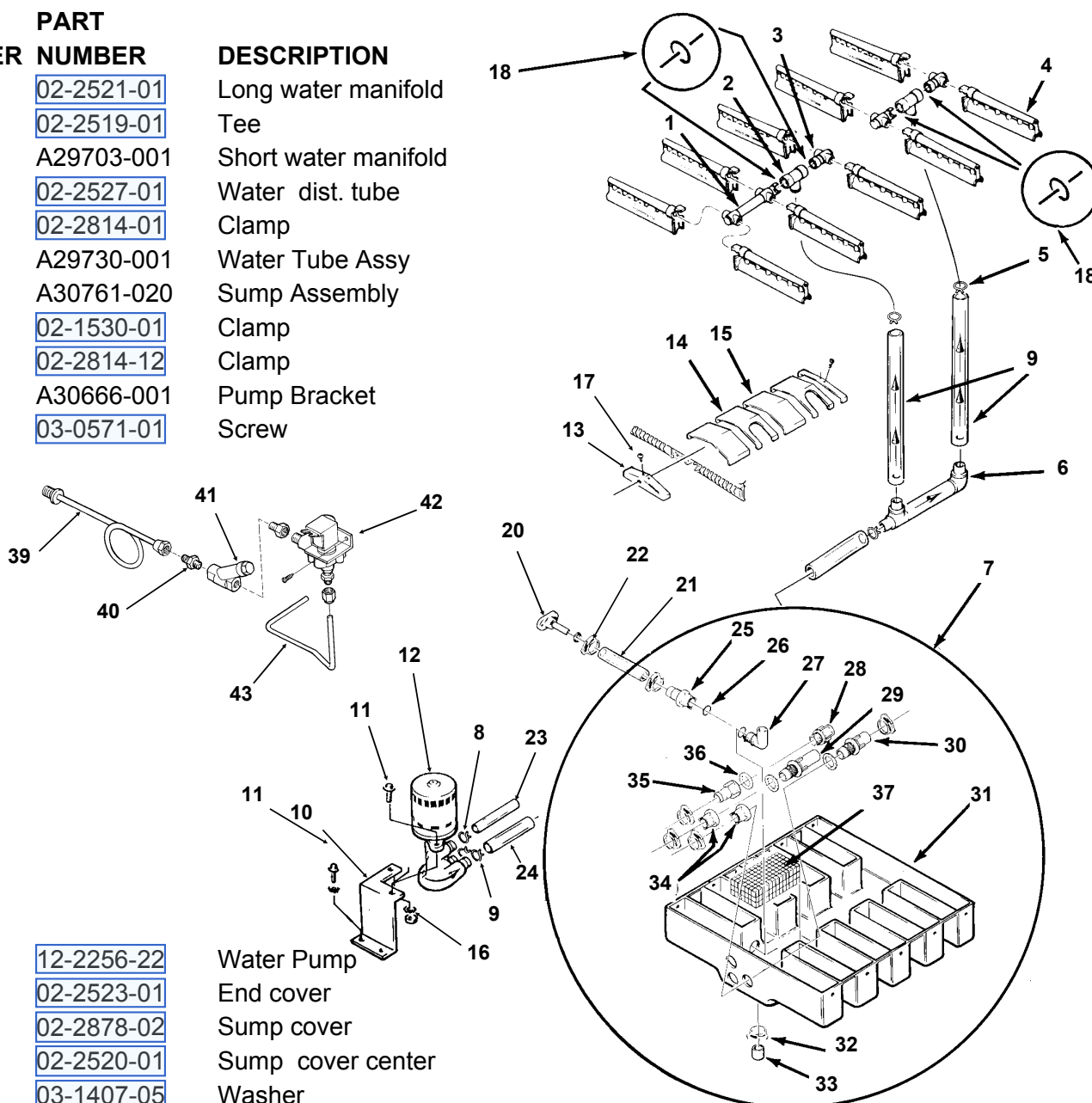
\* Includes starting components



# CMS1202R SERVICE PARTS

## WATER SYSTEM

ITEM NUMBER	PART NUMBER	DESCRIPTION
1	02-2521-01	Long water manifold
2	02-2519-01	Tee
3	A29703-001	Short water manifold
4	02-2527-01	Water dist. tube
5	02-2814-01	Clamp
6	A29730-001	Water Tube Assy
7	A30761-020	Sump Assembly
8	02-1530-01	Clamp
9	02-2814-12	Clamp
10	A30666-001	Pump Bracket
11	03-0571-01	Screw

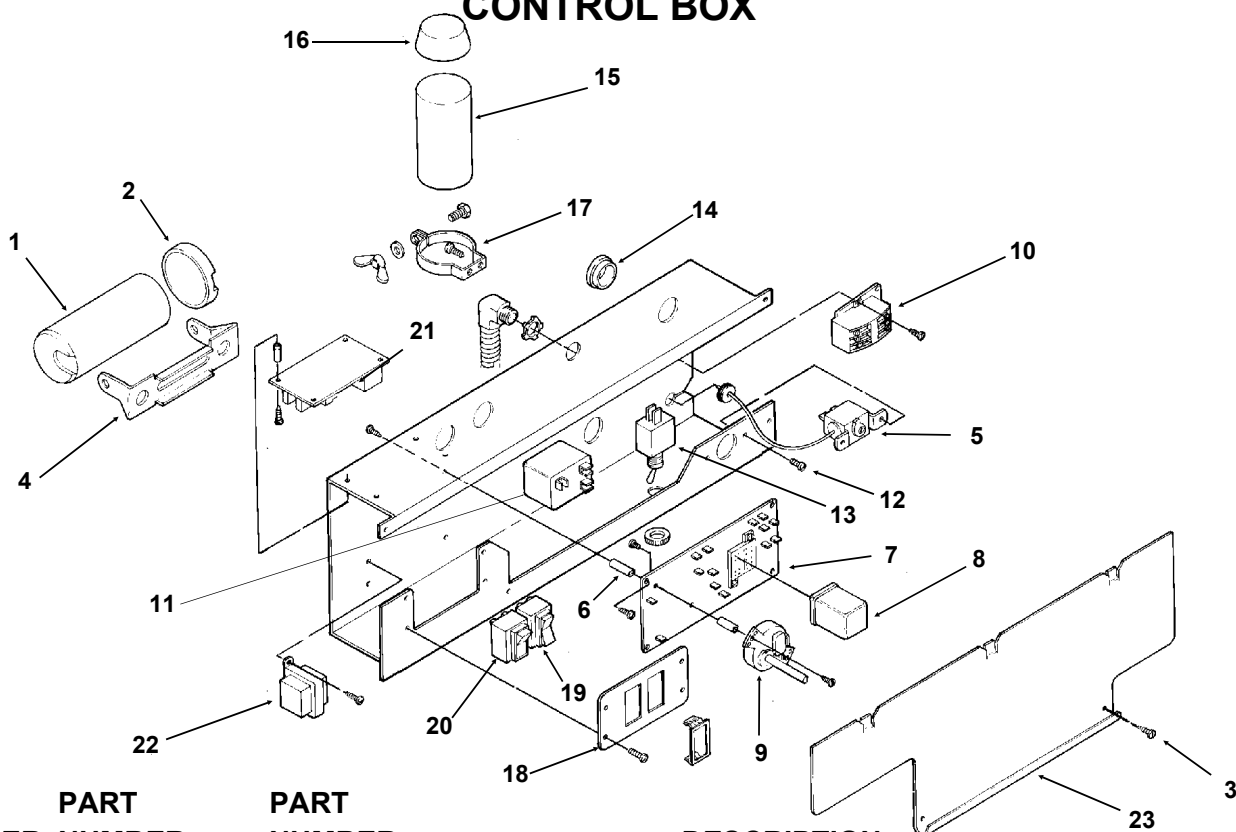


12	12-2256-22	Water Pump
13	02-2523-01	End cover
14	02-2878-02	Sump cover
15	02-2520-01	Sump cover center
16	03-1407-05	Washer
17	03-1531-01	Screw
18	13-0617-48	O-ring
19	13-0674-07	Hose (18.5")
20	A32282-003	Drain
21	13-0674-07	Tube, drain (7")
22	02-2814-12	Hose clamp
23	13-0674-07	Tube, need 6.25"
24	13-0674-08	Tube, need 6.6"
25	02-2606-01	Female tube
26	13-0617-02	O-ring
27	02-2125-01	Elbow
28	02-2080-01	Overflow
29	02-2792-01	Pick Up tube

30	02-2793-01	Inlet tube
31	no number	sump pan
32	02-1530-01	Clamp
33	13-0796-01	Rubber cap
34	02-2791-01	Water inlet nut
35	02-2606-01	Female tube
36	13-0617-02	O-ring
37	A30760-001	Screen
39	A35119-001	Water inlet assy.
40	16-0791-01	Half unio
41	16-0162-00	Strainer
42	12-1646-04	Inlet water valve
43	A35117-001	Tube

# CMS1202R SERVICE PARTS

## CONTROL BOX

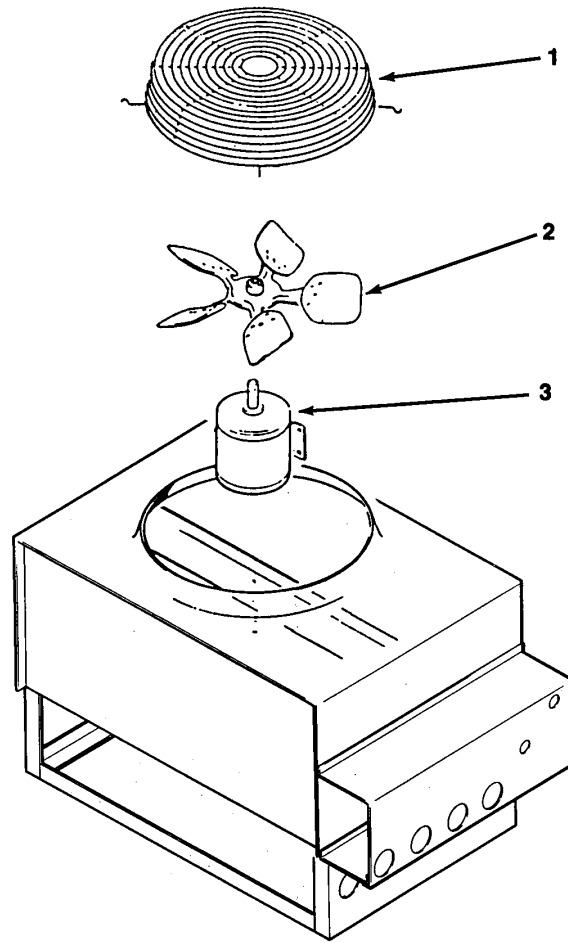


ITEM NUMBER	PART NUMBER	PART NUMBER	DESCRIPTION
	<b>3 phase</b>	<b>single phase</b>	<b>Repl. comp*</b>
1	-	<a href="#">18-1901-48</a>	<a href="#">18-1901-27</a> Start Capacitor
2	-	<a href="#">18-8702-01</a>	Start Cap. Cap
3	-	<a href="#">03-1638-03</a>	Screw
4	-	<a href="#">18-2200-39</a>	Start cap. bracket
5	<a href="#">11-0351-22</a>	same	Cube Size Control
6	<a href="#">02-2242-02</a>	same	Stand off
7	<a href="#">12-1912-01</a>	same	Circuit board
8	<a href="#">12-1879-03</a>	same	Relay
9	<a href="#">12-2317-22</a>	same	Timer & Switch
10	<a href="#">12-0739-02</a>	<a href="#">12-2469-02</a>	Contactor
11	-	<a href="#">18-1903-46</a>	<a href="#">18-1903-56</a> Potential Relay
12	<a href="#">03-1403-17</a>	same	Screw
13	<a href="#">12-0426-01</a>	same	Comp. Switch
14	-	<a href="#">12-1213-12</a>	Snap busing
15	-	<a href="#">18-1902-27</a>	Run capacitor
16	-	<a href="#">13-0666-00</a>	Terminal cover
17	-	A34314-001	Run Cap Bracket
18	<a href="#">02-3173-01</a>	same	Switch plate
19	<a href="#">12-2414-01</a>	same	Wash- Off - Ice switch
20	<a href="#">12-2411-01</a>	same	Bin ice level switch
	<a href="#">12-2402-01</a>	same	Wire harness, bin level switch to board
21	<a href="#">12-2376-21</a>	same	Ice level control circuit board
22	<a href="#">12-2285-22</a>	same	Transformer
23	A35082-001	same	Control box cover

\* Start capacitor and relay are different on later replacement compressors. Check compressor model. Original was CRG3-0250-PFV-270, late replacement model is CR33KQ-PVF-240/280

# CMS1202R SERVICE PARTS

## REMOTE CONDENSER

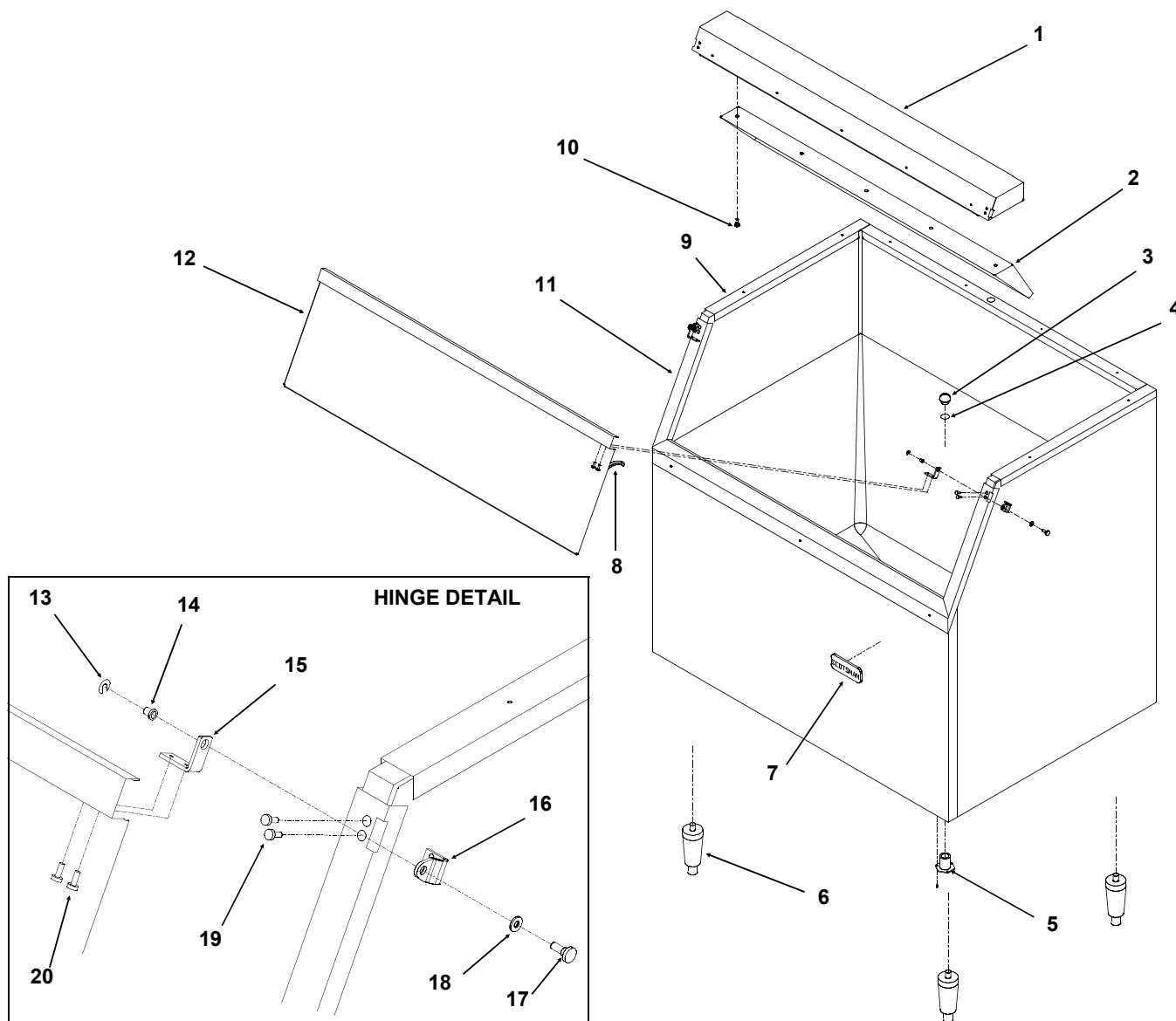


### RC1422-32

ITEM NUMBER	PART NUMBER	DESCRIPTION
1	<a href="#">02-2618-01</a>	Fan guard
2	<a href="#">18-6304-01</a>	Fan blade
3	<a href="#">18-5301-01</a>	Fan motor
Not Shown:		
4	<a href="#">16-0850-03</a>	Quick connect, liquid
5	<a href="#">16-0850-01</a>	Quick connect, discharge
6	<a href="#">16-1057-01</a>	Quick connect, pre-charged 3/8" line
7	<a href="#">16-1057-02</a>	Quick connect, pre-charged 1/2" line

# CMS1202R SERVICE PARTS

## BH900 ICE STORAGE BIN



ITEM NUMBER	PARTS NUMBER	DESCRIPTION
1	A35322-020	Canopy Assembly
2	A35152-001	Ice Baffle
3	<a href="#">02-2809-01</a>	Drain Top
4	<a href="#">13-0617-11</a>	O-ring
5	<a href="#">02-3201-01</a>	Drain casting
6	KLP2E	Leg Kit, Black
	KLP2S	Leg Kit, Nickel Plated
7	<a href="#">15-0711-01</a>	Emblem
8	<a href="#">13-0595-00</a>	Door gasket( 6.25' reg.)
9	<a href="#">19-0503-04</a>	Bin gasket
10	<a href="#">03-0727-11</a>	Baffle screw
11	A35275-001	Door frame assy.
12	A35323-020	Door with gasket
13	<a href="#">03-1539-09</a>	"E" ring

ITEM NUMBER	PARTS NUMBER	DESCRIPTION
14	<a href="#">02-2380-01</a>	Hinge bushing
15	<a href="#">02-3195-01</a>	Door hinge
16	<a href="#">02-3196-01</a>	Bin hinge
17	<a href="#">02-2806-01</a>	Shoulder screw
18	<a href="#">02-2380-02</a>	Spacer
19	<a href="#">03-1403-29</a>	Screw 10-24
20	<a href="#">03-1403-24</a>	Screw 10-24
21	<a href="#">02-0540-00</a>	Scoop
Not Shown		
22	A35280-001	Left bin channel
23	A35311-001	Back bin channel
24	A35279-001	Right bin channel
25	<a href="#">02-3202-01</a>	Trim guard for canopy

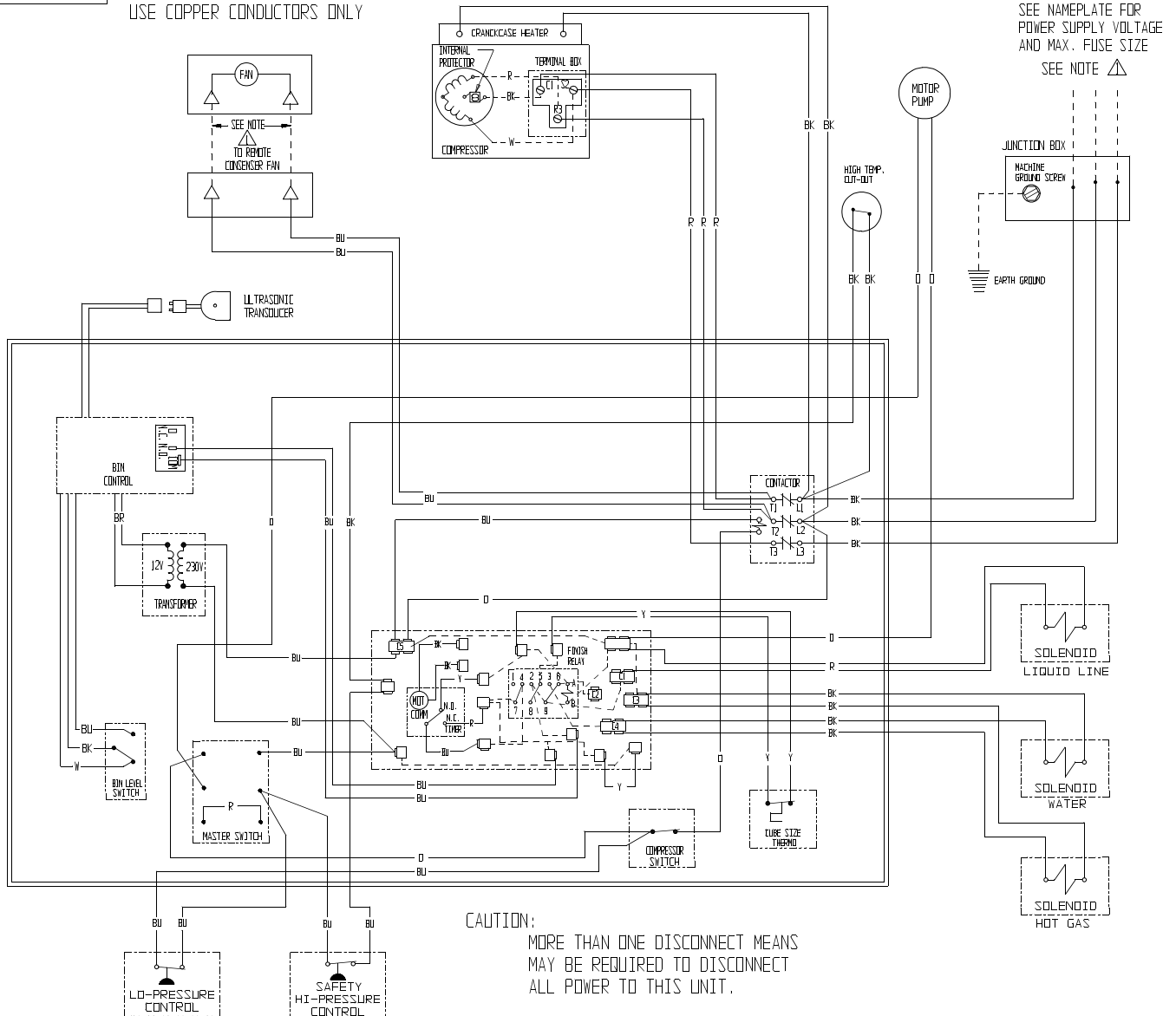
# CMS1202R SERVICE PARTS

208-230/60/3

Remote Air Cooled

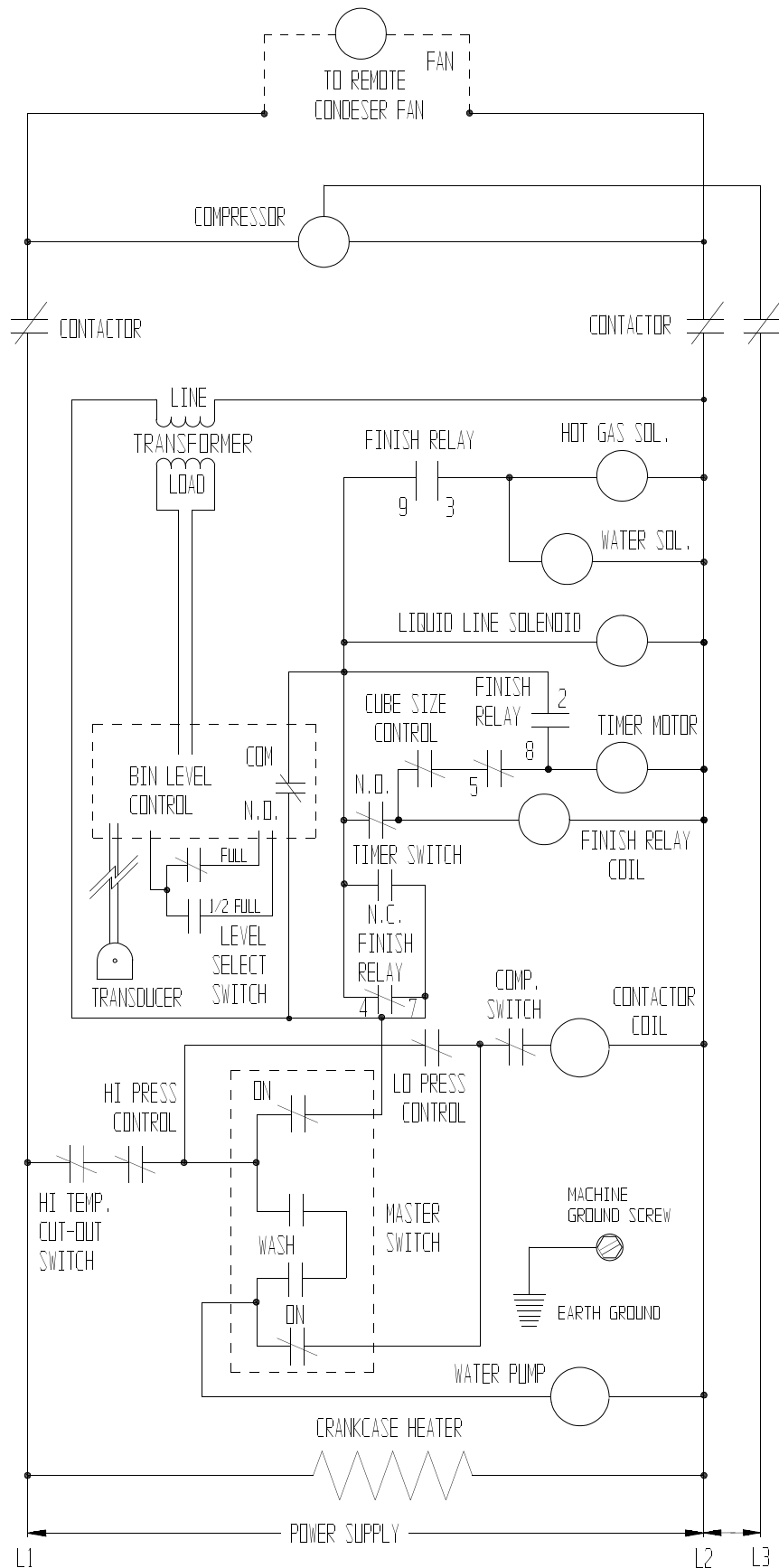
A35441-003

THIS UNIT MUST BE GROUNDED  
USE COPPER CONDUCTORS ONLY





## Remote Air Cooled



# CMS1202R SERVICE PARTS

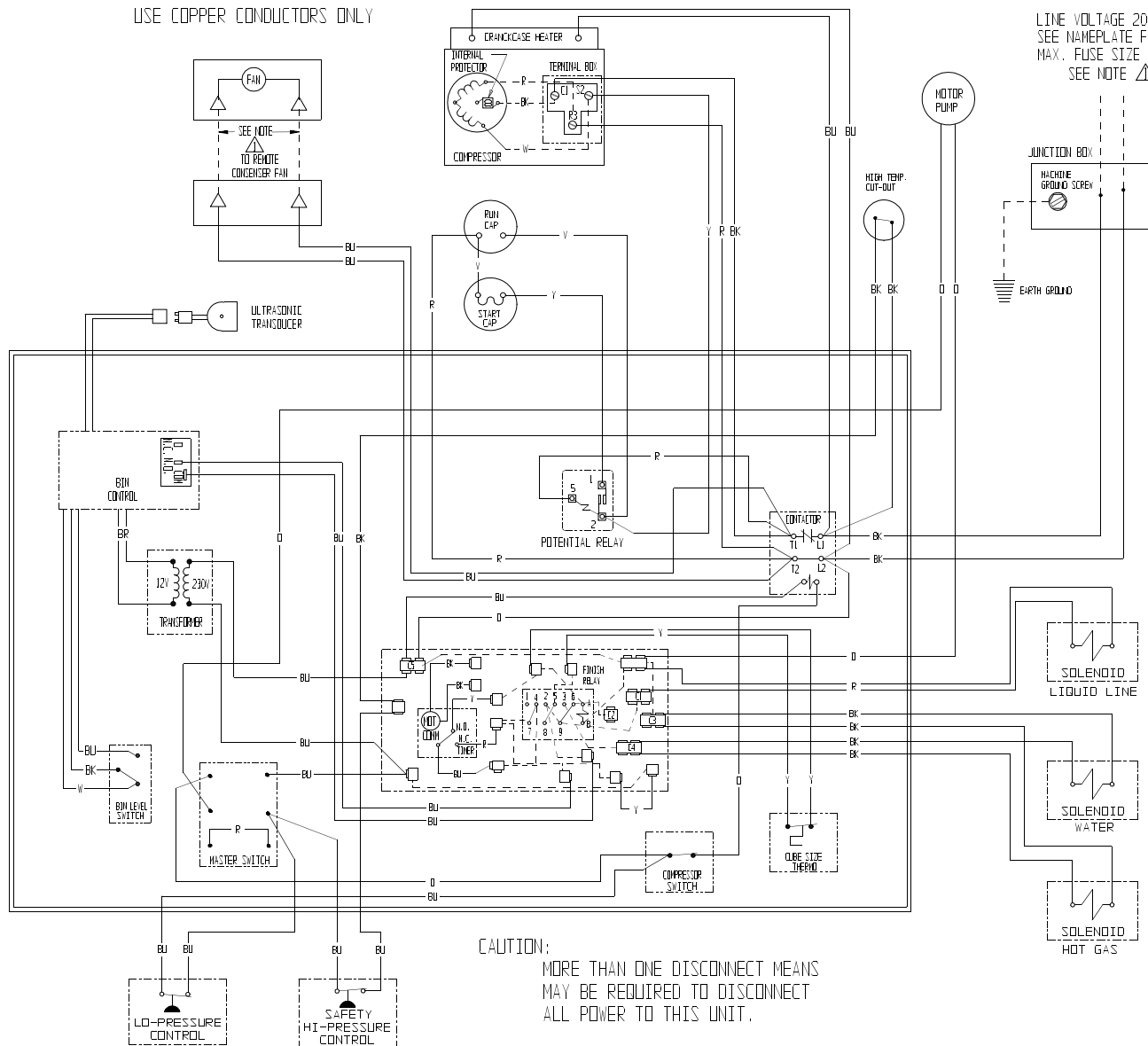
208-230/60/1

## Remote Air Cooled

NOTE:  
 ▲ DASHED LINES INDICATE FIELD WIRING WHICH MUST BE  
 INSTALLED IN ACCORDANCE WITH THE NATIONAL ELECTRICAL  
 CODE AND ALL STATE AND LOCAL CODES.

THIS UNIT SHOWN IN THE TIMED PORTION  
 OF THE FREEZING CYCLE

THIS UNIT MUST BE GROUNDED  
 USE COPPER CONDUCTORS ONLY



CAUTION:  
 MORE THAN ONE DISCONNECT MEANS  
 MAY BE REQUIRED TO DISCONNECT  
 ALL POWER TO THIS UNIT.

## Remote Air Cooled

