

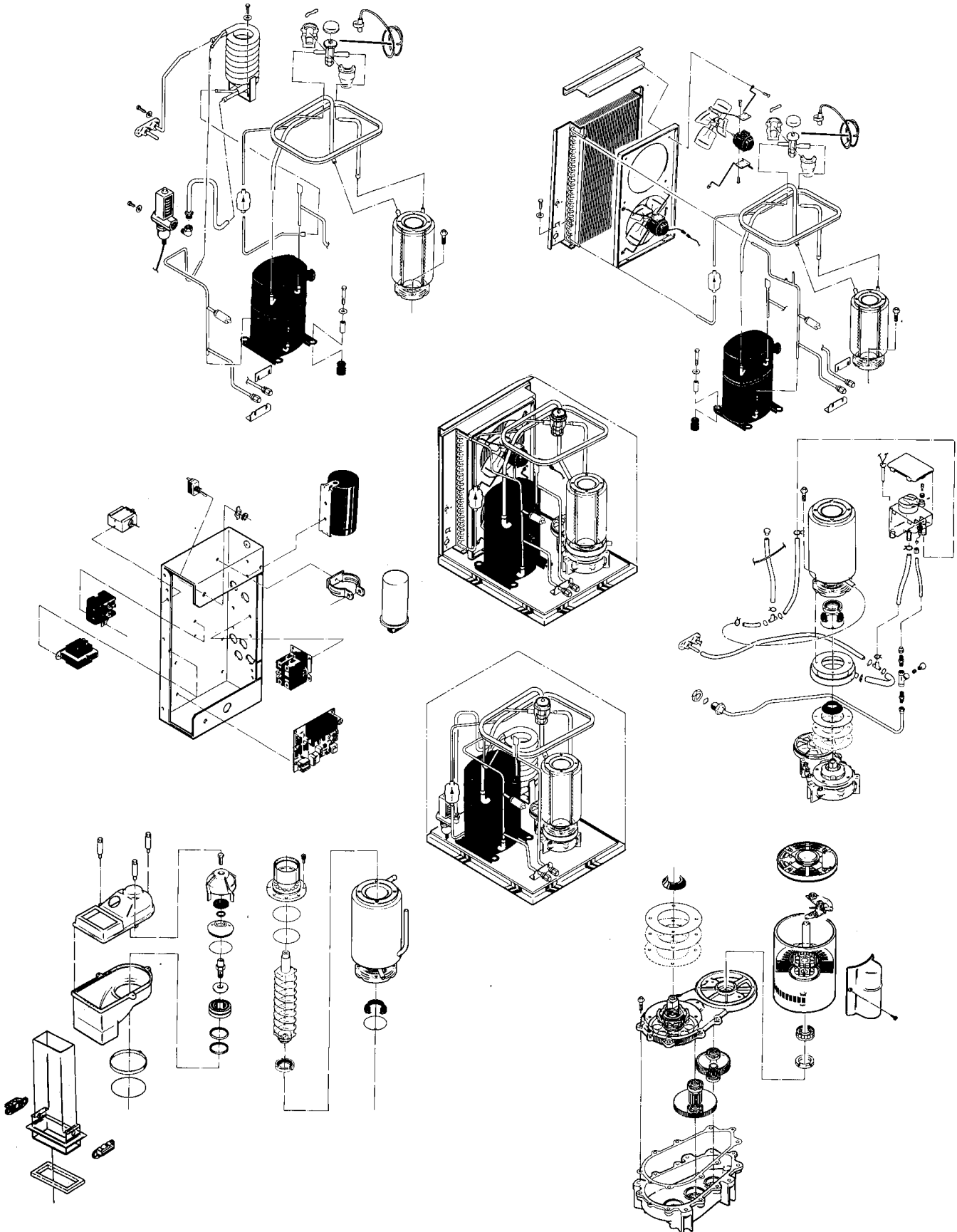
# FM1202 SERVICE PARTS

This parts list contains the service parts and wiring diagrams for this model. Check the model number in question to be sure that it is applicable to this parts list.

## TABLE OF CONTENTS

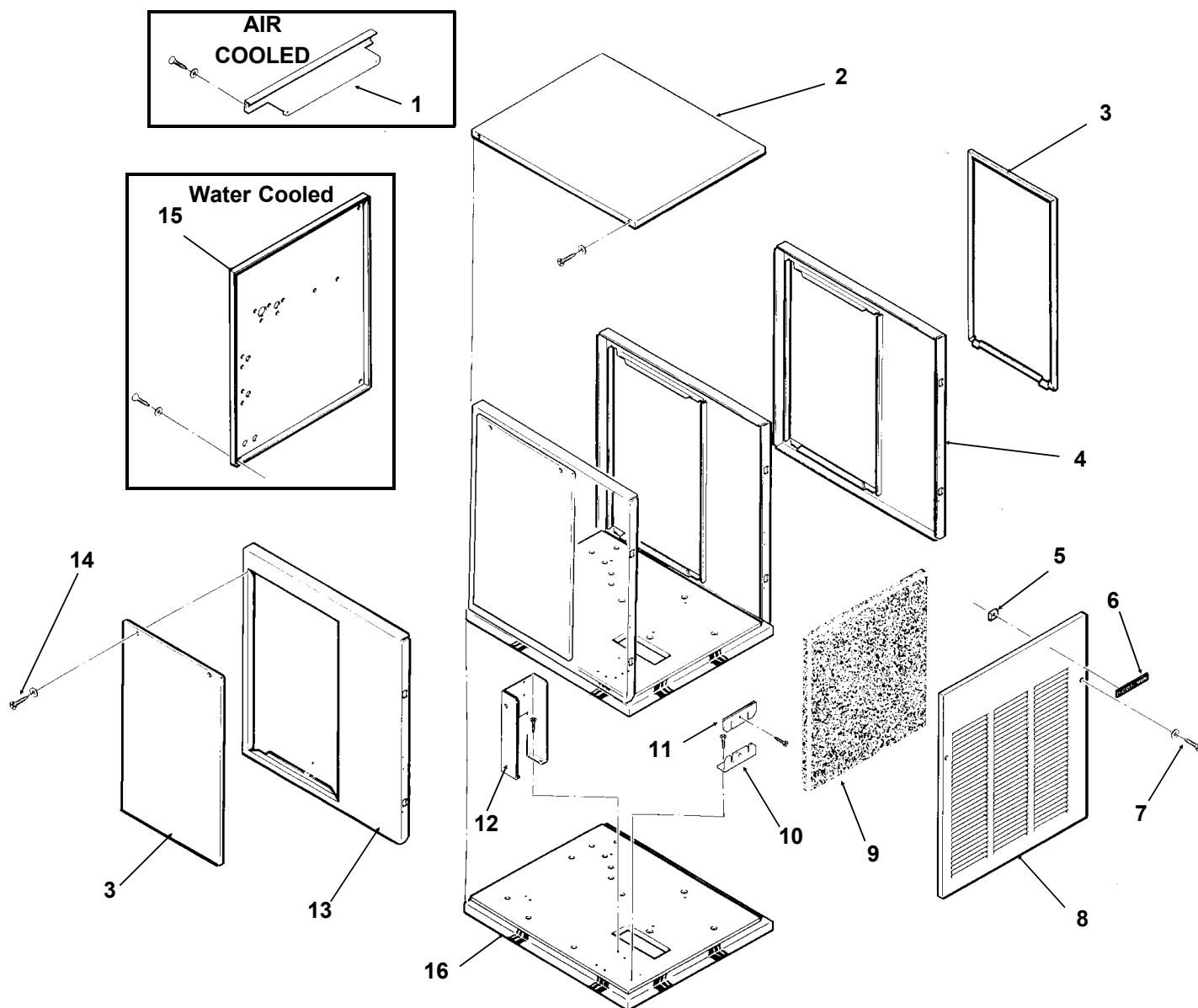
Cabinet .....	2
Air Cooled Refrigeration .....	3
Water Cooled Refrigeration.....	4
Water System .....	5
Gearmotor.....	6
Evaporator .....	7
Control Box.....	8
Wiring Diagrams .....	9

# FM1202 SERVICE PARTS



# FM1202 SERVICE PARTS

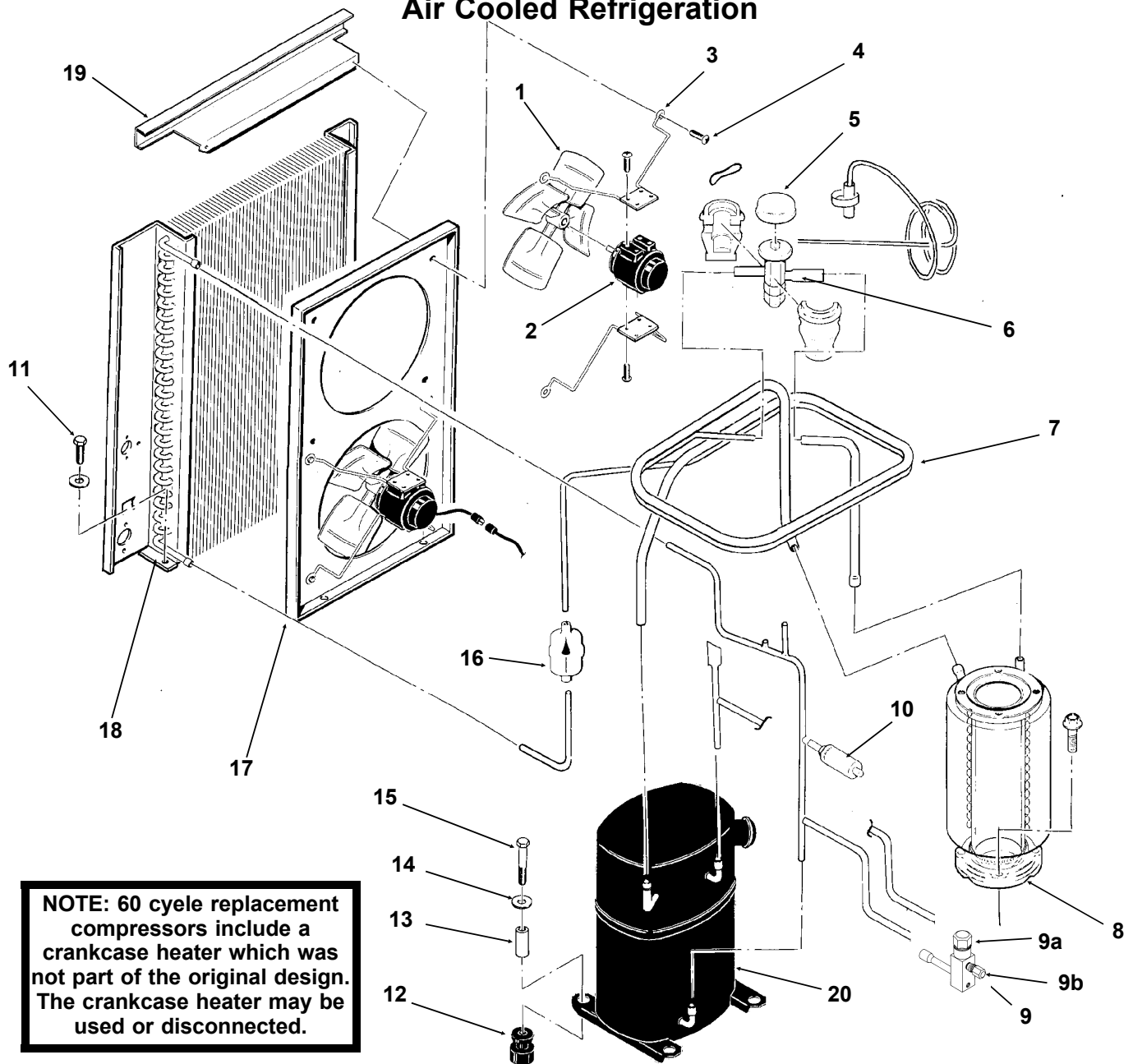
## Cabinet Assembly



ITEM NUMBER	PART NUMBER	DESCRIPTION	ITEM NUMBER	PART NUMBER	DESCRIPTION
1	A33233-001	Condenser Support	9	<a href="#">02-2976-01</a>	Filter Assembly
2	A33256-001	Top Panel, Painted	10	<a href="#">03-1660-01</a>	Filter clip
	A33256-002	Top Panel, S.S.	11	A34348-001	Ft. brace
3	A34038-001	Service Panel, Painted	12	A34039-001	Control Box Support
	A34038-002	Service Panel, S.S.	13	A32435-001	Left Side Panel, Painted
4	A33292-001	Right Side Panel, Painted		A32435-002	Left Side Panel, S.S.
	A33292-002	Right Side Panel, S.S.	14	<a href="#">03-1404-12</a>	Screw
5	<a href="#">03-0271-00</a>	Speed Clip	15	A33252-001	Rear Panel, Water Cooled Painted Only
6	<a href="#">15-0711-01</a>	Emblem			
7	<a href="#">03-1419-08</a>	Screw			
8	A33255-001	Front Panel, Painted	16.	A34042-001	Base
	A33255-002	Front Panel, S.S.			

# FM1202 SERVICE PARTS

## Air Cooled Refrigeration

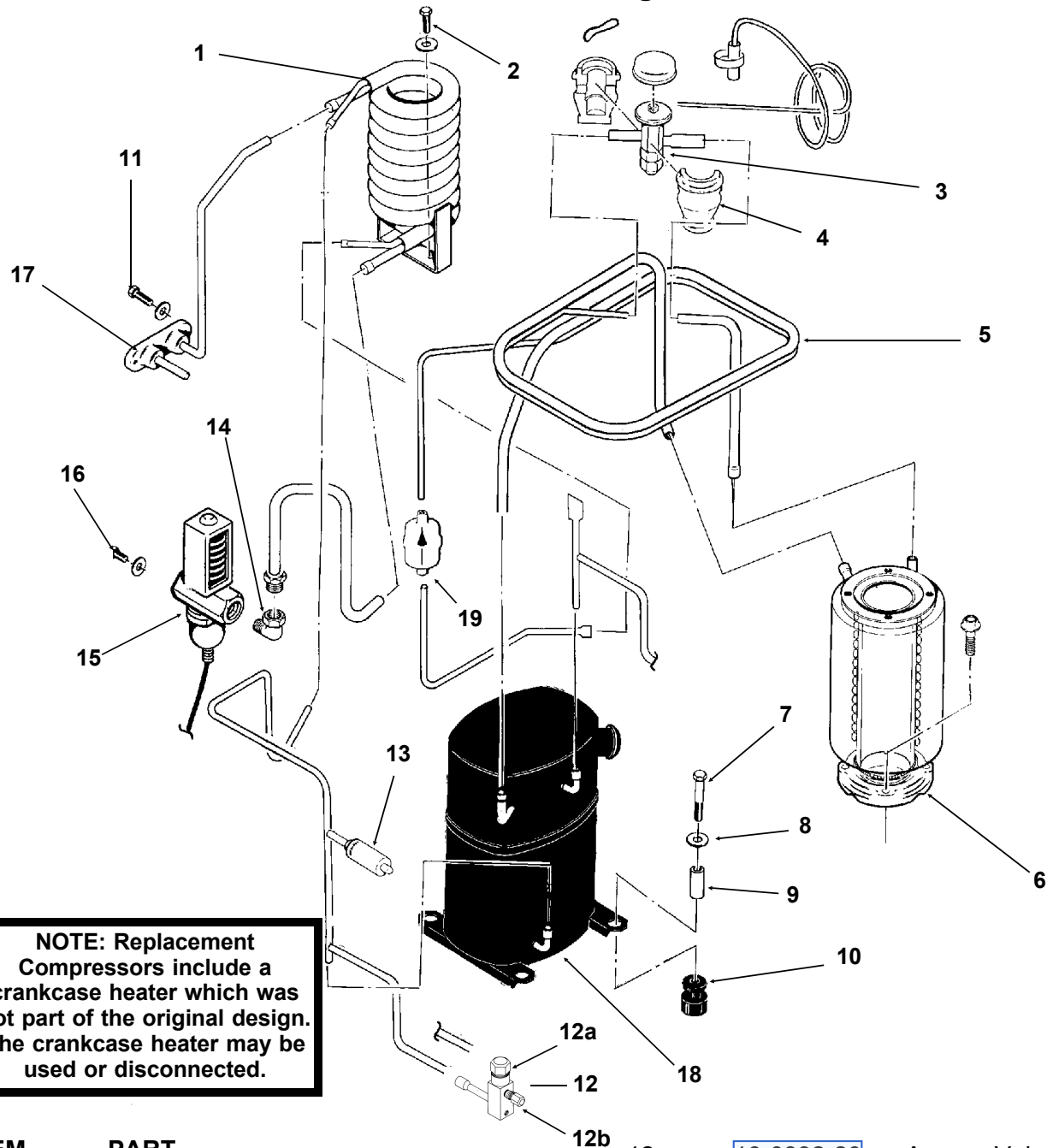


**NOTE: 60 cycle replacement compressors include a crankcase heater which was not part of the original design. The crankcase heater may be used or disconnected.**

ITEM NUMBER	PART NUMBER	DESCRIPTION	ITEM NUMBER	PART NUMBER	DESCRIPTION
1	18-3815-01	Fan Blade	12	18-6800-01	Grommet
2	12-1576-02	Fan Motor	13	18-2300-27	Sleeve
3	02-2378-01	Fan Bracket	14	03-1407-07	Washer
4	03-1531-01	Screw	15	03-1405-20	Cap Screw
5	A32961-020	Insulation Kit (3 piece)	16	02-3319-02	Dryer
6	11-0477-20	Thermo Expansion Valve	17	A33231-001	Fan Shroud
7	A35566-001	Suction Line	18	18-8717-01	Condenser
8	A32890-020	Evaporator	19	A33233-001	Condenser Mount
9	16-0832-20	Access valve	20	18-8716-23	Compressor 208-230/60/1
9a	16-0832-02	Stem cap		18-8716-25	Compressor 200-230/60/3
9b	16-0832-03	Core cap		18-8716-26	Compressor 220-240/50/1
10	11-0446-27	Hi Pressure Cut Out		(18-8716-06	for 50 cycle only)
11	03-1645-01	Screw		all compressors have internal overloads	
				18-8716-23, 18-8716-25 have crankcase heaters	

# FM1202 SERVICE PARTS

## Water Cooled Refrigeration

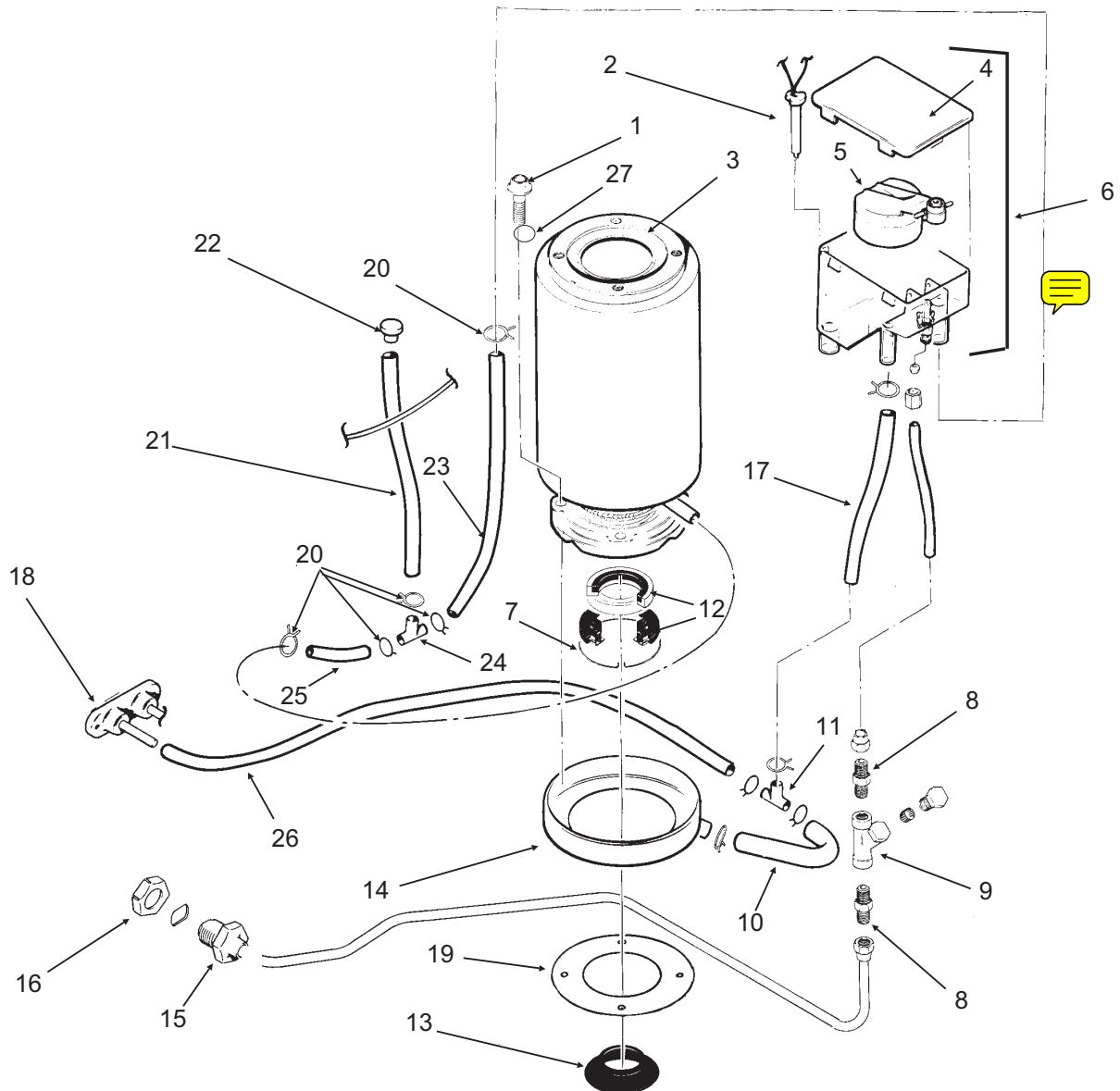


**NOTE: Replacement Compressors include a crankcase heater which was not part of the original design. The crankcase heater may be used or disconnected.**

ITEM NUMBER	PART NUMBER	DESCRIPTION			
1	18-8718-25	Condenser	12	16-0832-20	Access Valve Complete
2	03-1645-01	Screw	12a	16-0832-02	Stem cap
3	11-0477-20	Thermo Expansion Valve	12b	16-0832-03	Core cap
4	A32961-020	Insulation Kit (3 piece)	13	11-0446-27	Hi Pressure Cut Out
5	A35566-001	Suction Line	14	16-0401-02	Elbow
6	A32890-020	Evaporator	15	11-0424-01	Water Reg. Valve
7	03-1405-20	Cap Screw	16	03-1403-14	Screw
8	03-1407-07	Washer	17	A34044-001	Drain Assembly
9	18-2300-26	Sleeve	18	18-8716-23	Compressor 208-230/60/1
10	18-6800-01	Grommet		18-8716-25	Compressor 200-230/60/3
11	03-1645-01	Screw		18-8716-26	Compressor 220-240/50/1
				(all have internal overloads & 18-8716-23,	
				18-8716-25 have crankcase heaters)	
			19	02-3319-02	Dryer

# FM1202 SERVICE PARTS

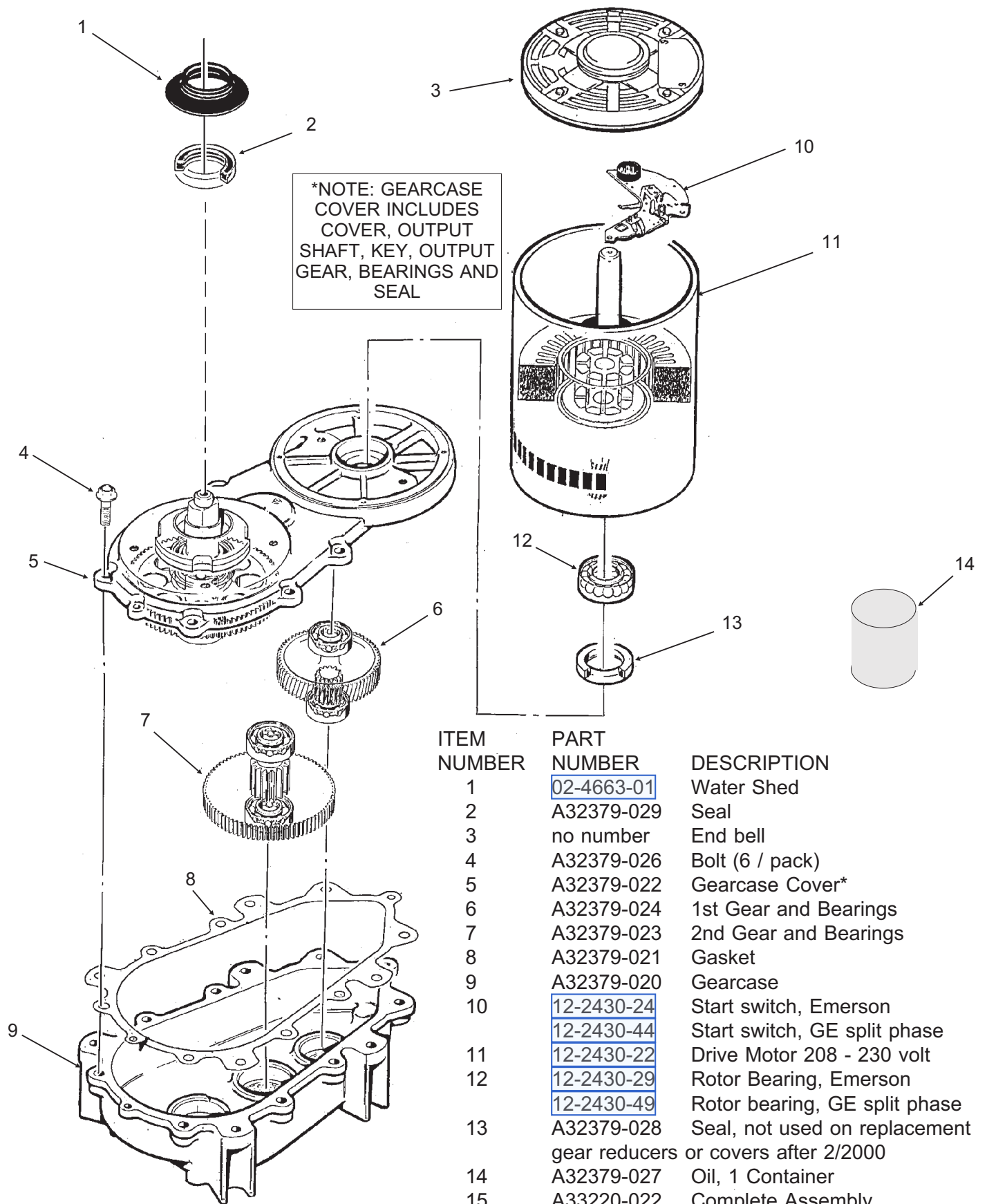
## Water System



ITEM NUMBER	PART NUMBER	DESCRIPTION	ITEM NUMBER	PART NUMBER	DESCRIPTION
1	03-1405-41	Cap Screw	14	A32050-001	Drip Pan
2	A33101-022	Water Level Sensor	15	A27318-001	Water Inlet Fitting
3	A32890-020	Evaporator	16	03-1394-01	Pal Nut
4	02-2936-01	Res. Cover	17	13-0079-03	Res. Overflow, 8" req.
5	A32907-001	Float Assembly with pin	18	A34045-001	Drain Casting, air cooled
	housing seal, rubber seat, insert & float		19	13-0704-00	Gasket
	02-3190-01	Rubber seat	20	02-2814-08	Clamps
6	A32929-020	Reservoir Assy Complete	21	13-0674-06	Evap. Drain, 14" req.
7	A32777-001	Retaining Ring for seal	22	13-0840-01	Plug
8	16-0791-01	Half Union	23	13-0674-06	Evap. Inlet Tube, 5" req.
9	16-0162-00	Strainer	24	16-0670-01	Tee
10	13-0079-03	Tube, 3.2" req.	25	A33203-001	Tube, Preformed
11	16-0670-02	Tee	26	13-0079-03	Drain Tube, 24" req.
12	02-0929-23	Water Seal	27.	03-1417-13	Lockwasher
13	02-4663-01	Water Shed			

# FM1202 SERVICE PARTS

Gearmotor



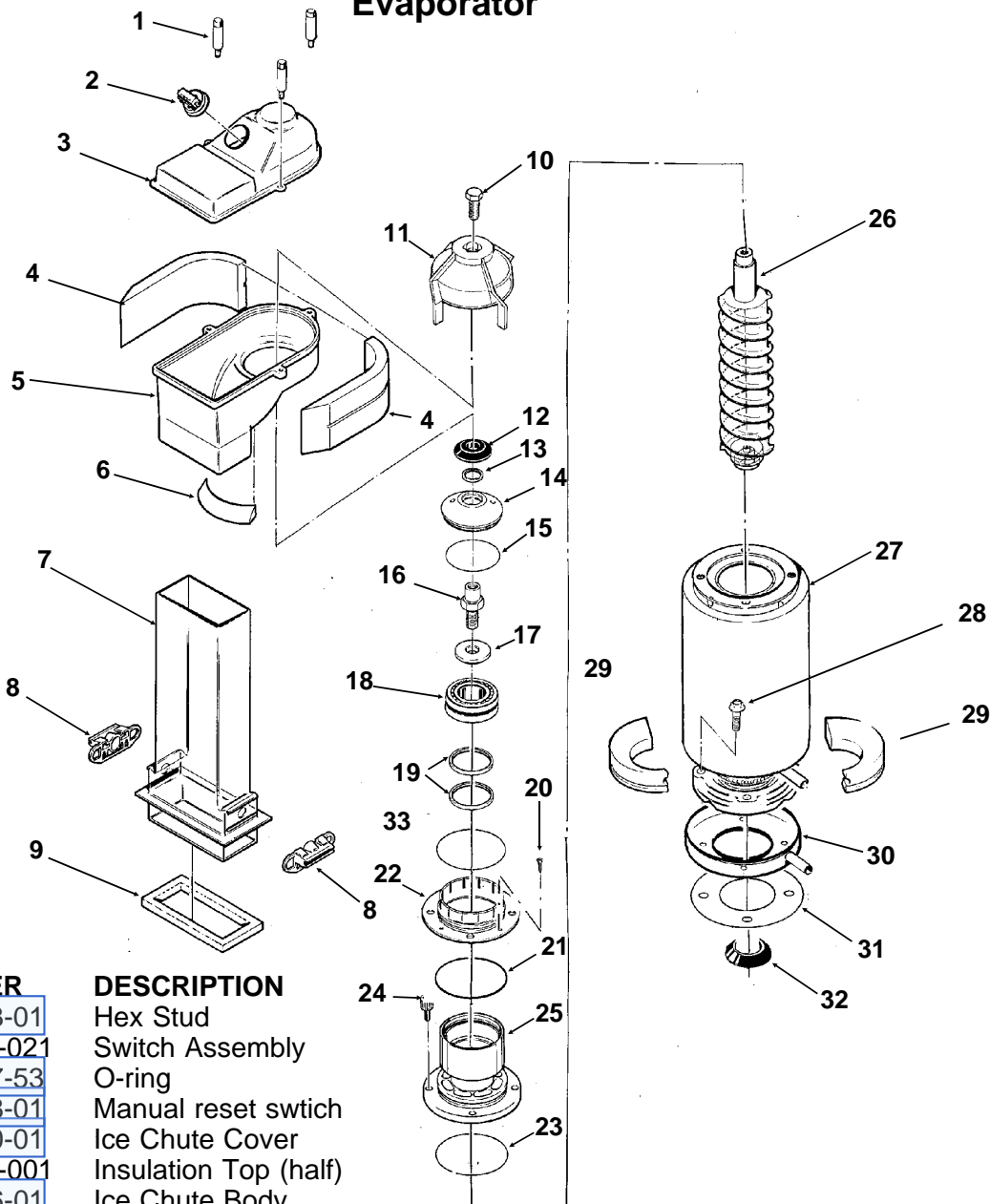
ITEM NUMBER	PART NUMBER	DESCRIPTION
1	<a href="#">02-4663-01</a>	Water Shed
2	A32379-029	Seal
3	no number	End bell
4	A32379-026	Bolt (6 / pack)
5	A32379-022	Gearcase Cover*
6	A32379-024	1st Gear and Bearings
7	A32379-023	2nd Gear and Bearings
8	A32379-021	Gasket
9	A32379-020	Gearcase
10	<a href="#">12-2430-24</a>	Start switch, Emerson
	<a href="#">12-2430-44</a>	Start switch, GE split phase
11	<a href="#">12-2430-22</a>	Drive Motor 208 - 230 volt
12	<a href="#">12-2430-29</a>	Rotor Bearing, Emerson
	<a href="#">12-2430-49</a>	Rotor bearing, GE split phase
13	A32379-028	Seal, not used on replacement gear reducers or covers after 2/2000
14	A32379-027	Oil, 1 Container
15	A33220-022	Complete Assembly
	208-230 volt	
	A33220-030	Gears, oil & cases. No motor.



# FM1202 SERVICE PARTS

## Evaporator

Not Illustrated:  
Bail Clamp, pn  
A34969-001



### ITEM NUMBER

### PART NUMBER

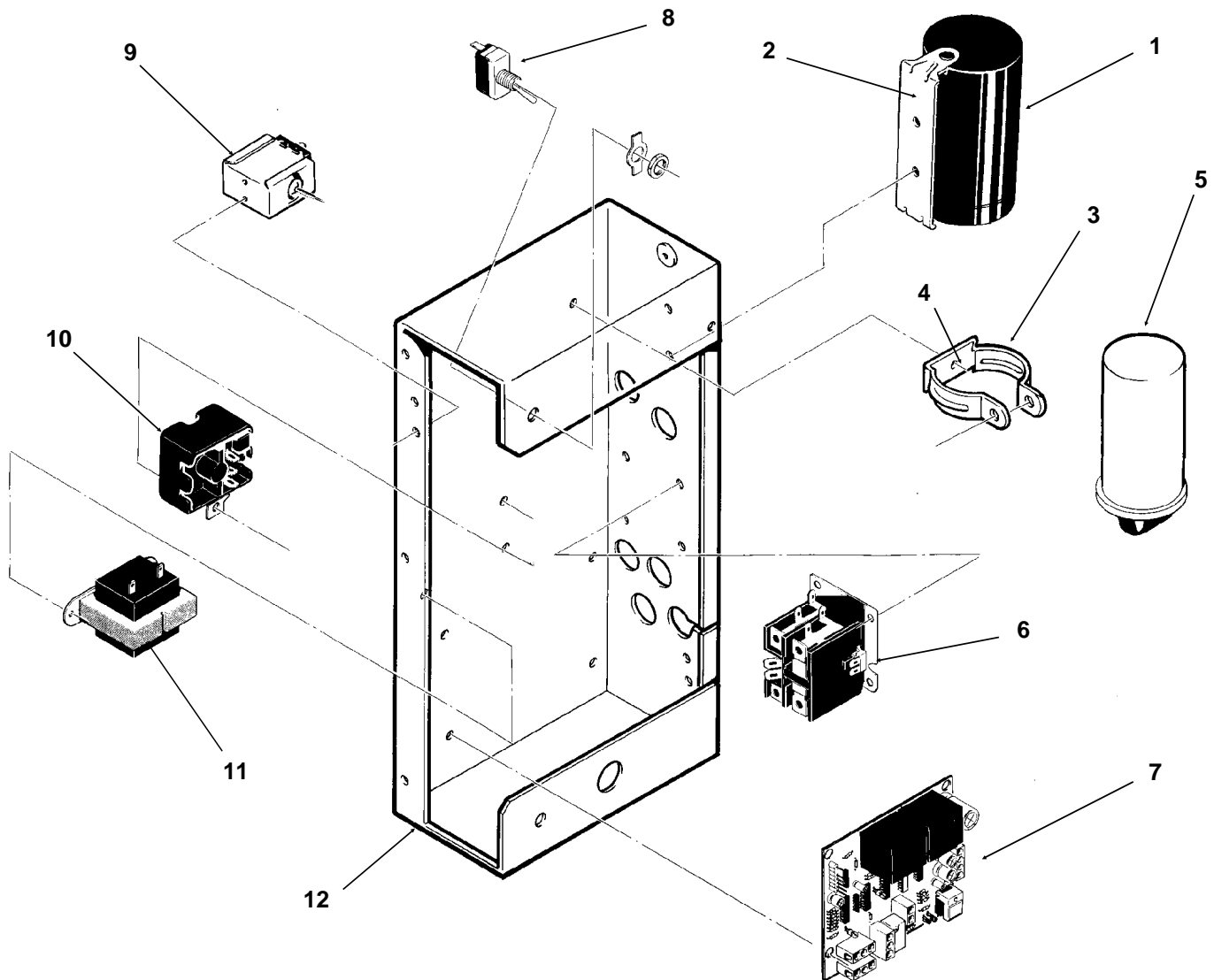
### DESCRIPTION

1.	02-2933-01	Hex Stud			
2.	A32891-021	Switch Assembly			
	13-0617-53	O-ring			
	12-2398-01	Manual reset switch			
3.	02-2930-01	Ice Chute Cover			
4.	A32963-001	Insulation Top (half)			
5.	02-2926-01	Ice Chute Body			
6.	A33102-001	Insulation Collar Inside			
	A35419-020	Strap kit	20.	03-1405-27	Screw
7.	02-2929-01	Ice Chute Lower	21.	13-0617-52	O-Ring
8.	A37708-021	Ice level sensors (set of 2)	22.	02-2916-01	Slotted Collar
9.	A32930-001	Chute Gasket	23.	13-0617-45	O-Ring
10.	03-1405-52	Hex Cap Screw	24.	03-1544-08	Soc. Head Screw
11.	02-3001-01	Ice Sweep	25.	A34505-020	Breaker (Divider)
12.	13-0871-01	Water Shed			(includes 18 & 19)
13.	02-2978-01	Lip Seal	26.	A38071-022	Auger
14.	02-3128-20	Breaker Cover	27.	A32890-020	Evaporator
15.	13-0617-54	O-Ring	28.	03-1405-41	Cap Screw
16.	08-0660-01	Auger Stud, includes item 17	29.	A32962-001	Insulation Bot. (half)
17.	no number	Thrust Washer, part of #16		A32962-002	Insulation (half)
18.	A34559-020	Bearing	30.	A32050-001	Drip Pan
19.	02-2977-01	Lip Seal	31.	13-0704-00	Drip Pan Gasket
			32.	13-0868-01	Water shed
			33.	13-0617-49	o-ring



# FM1202 SERVICE PARTS

## Control Box

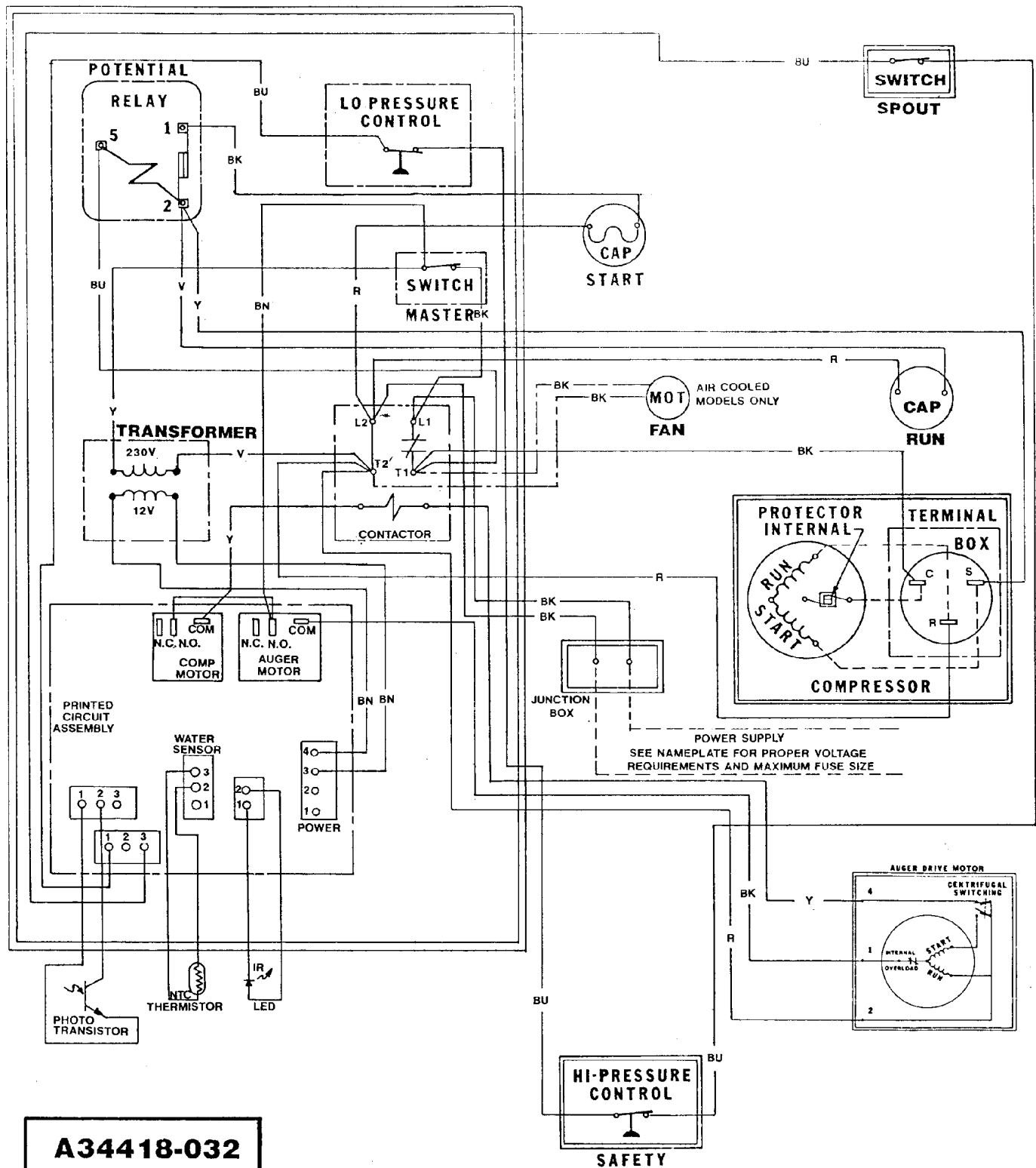


ITEM NUMBER	PART NUMBER	DESCRIPTION	ITEM NUMBER	PART NUMBER	DESCRIPTION
1	<a href="#">18-1901-15</a>	Start Capacitor, all 60 Hz	7	<a href="#">A37750-021</a>	Circuit Board
	<a href="#">18-1901-23</a>	Start Capacitor, 50 Hz	8.	<a href="#">12-0426-01</a>	Master Switch
	<a href="#">18-2200-38</a>	Start Capacitor Cap.	9.	<a href="#">11-0447-20</a>	Low Pressure Control
2.	<a href="#">18-2200-39</a>	Start Capacitor Bracket	10	<a href="#">18-1903-33</a>	Potential Relay, 60 Hz
	<a href="#">03-1638-04</a>	Screw		<a href="#">18-1903-46</a>	Potential relay, 50 Hz
	<a href="#">03-1417-15</a>	Lockwasher	11.	<a href="#">12-2285-22</a>	Transformer
3.	<a href="#">A32872-001</a>	Run Cap Bracket	12	no number	Control Box
	<a href="#">03-1652-02</a>	Bolt	NOT ILLUSTRATED		
	<a href="#">03-0255-04</a>	Wing Nut	13.	<a href="#">12-2337-02</a>	3 Pin Plug Assy
4.	<a href="#">03-1638-03</a>	Screw		(Safety Circuit to Circuit Board)	
5.	<a href="#">18-1902-53</a>	Run capacitor, all	14.	<a href="#">12-2340-01</a>	4 Pin Plug Assy
6.	<a href="#">12-2048-02</a>	Single Phase Contactor		(Transformer to Circuit Board)	
	<a href="#">12-0739-02</a>	Three phase contactor	15.	<a href="#">A34055-001</a>	Control Box Cover

Note: HZ means Cycles, 50 Hz is 50 cycle, the model number ends in a -6 for 50 Hz models.

# FM1202 SERVICE PARTS

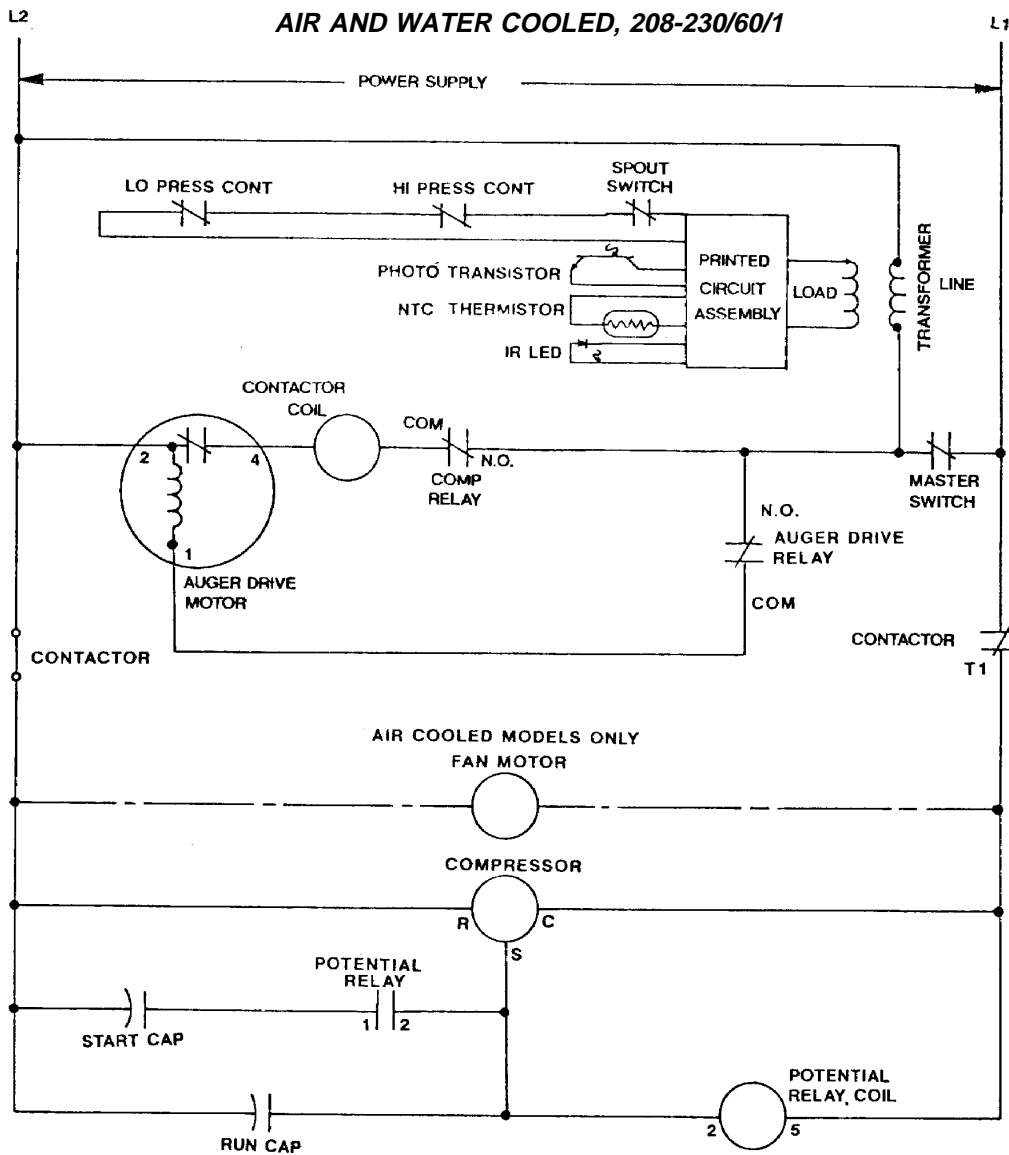
AIR AND WATER COOLED, 208-230/60/1



**A34418-032**

# FM1202 SERVICE PARTS

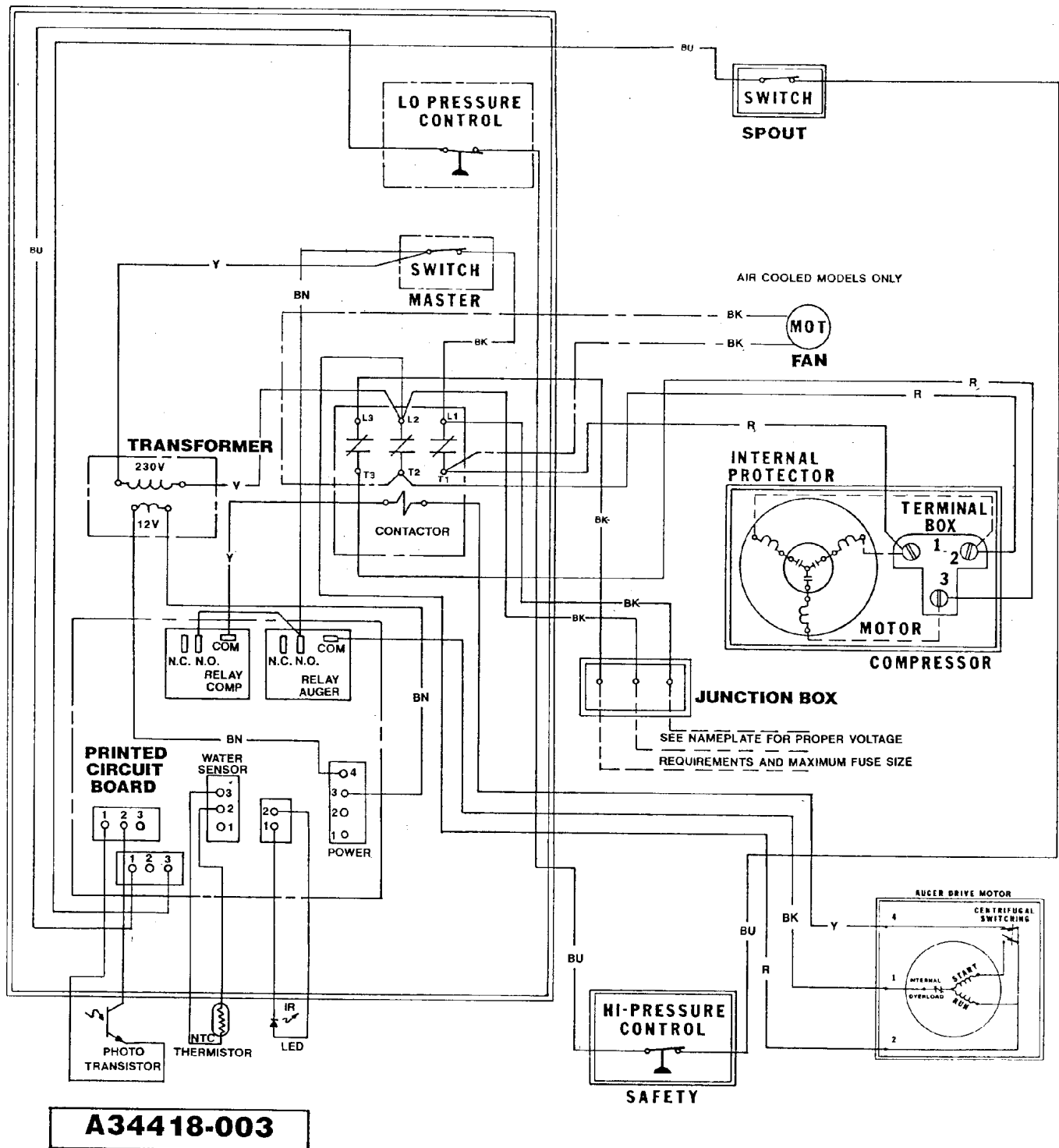
AIR AND WATER COOLED, 208-230/60/1



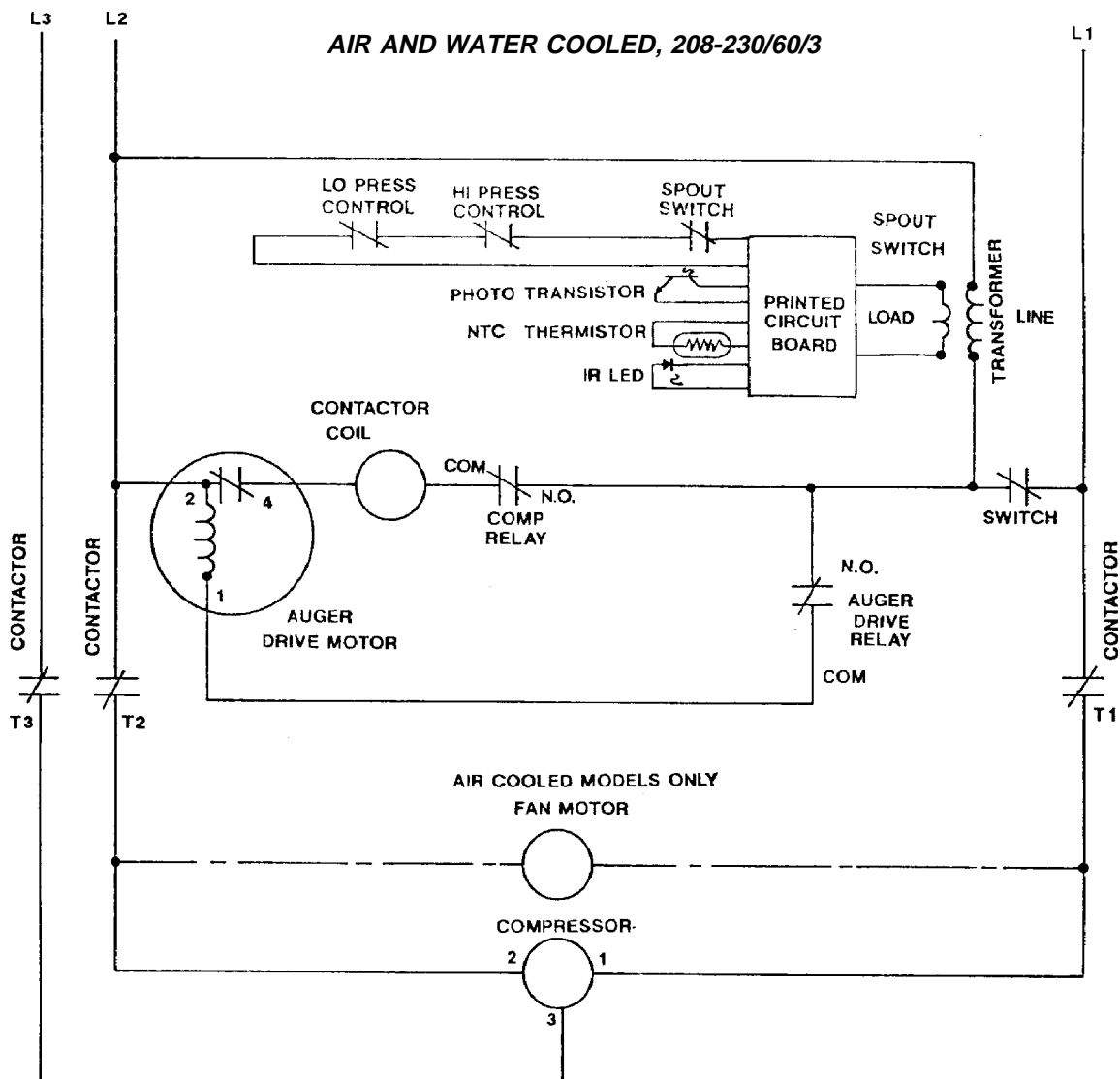
**USE COPPER CONDUCTORS ONLY**  
**ALL CONTROLS SHOWN IN NORMAL ICEMAKING MODE**  
**THIS UNIT MUST BE GROUND**

# FM1202 SERVICE PARTS

AIR AND WATER COOLED, 208-230/60/3



# FM1202 SERVICE PARTS



**USE COPPER CONDUCTORS ONLY  
ALL CONTROLS SHOWN IN NORMAL ICEMAKING MODE  
THIS UNIT MUST BE GROUNDED**