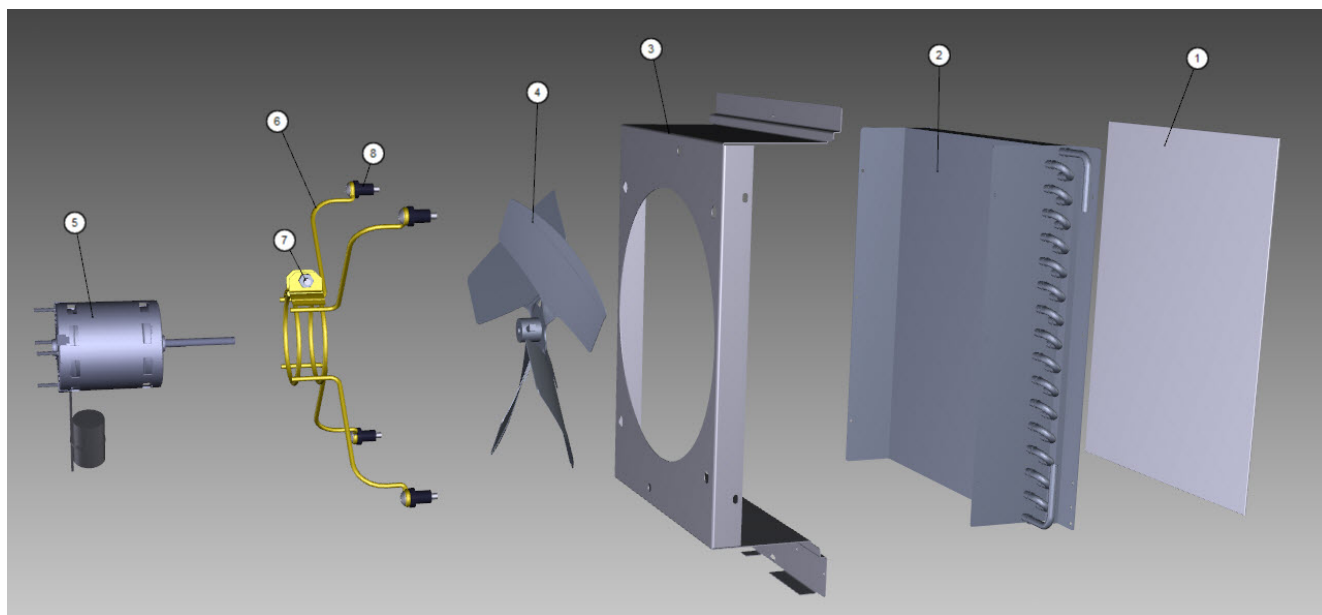


## iT0420, iP0320 Indigo NXT

### iT0420, iP0320 - Refrigeration Compartment - Air-cooled Components



---

iT0420, iP0320 - Refrigeration Compartment - Air-cooled Components

# iT0420, iP0320 Indigo NXT

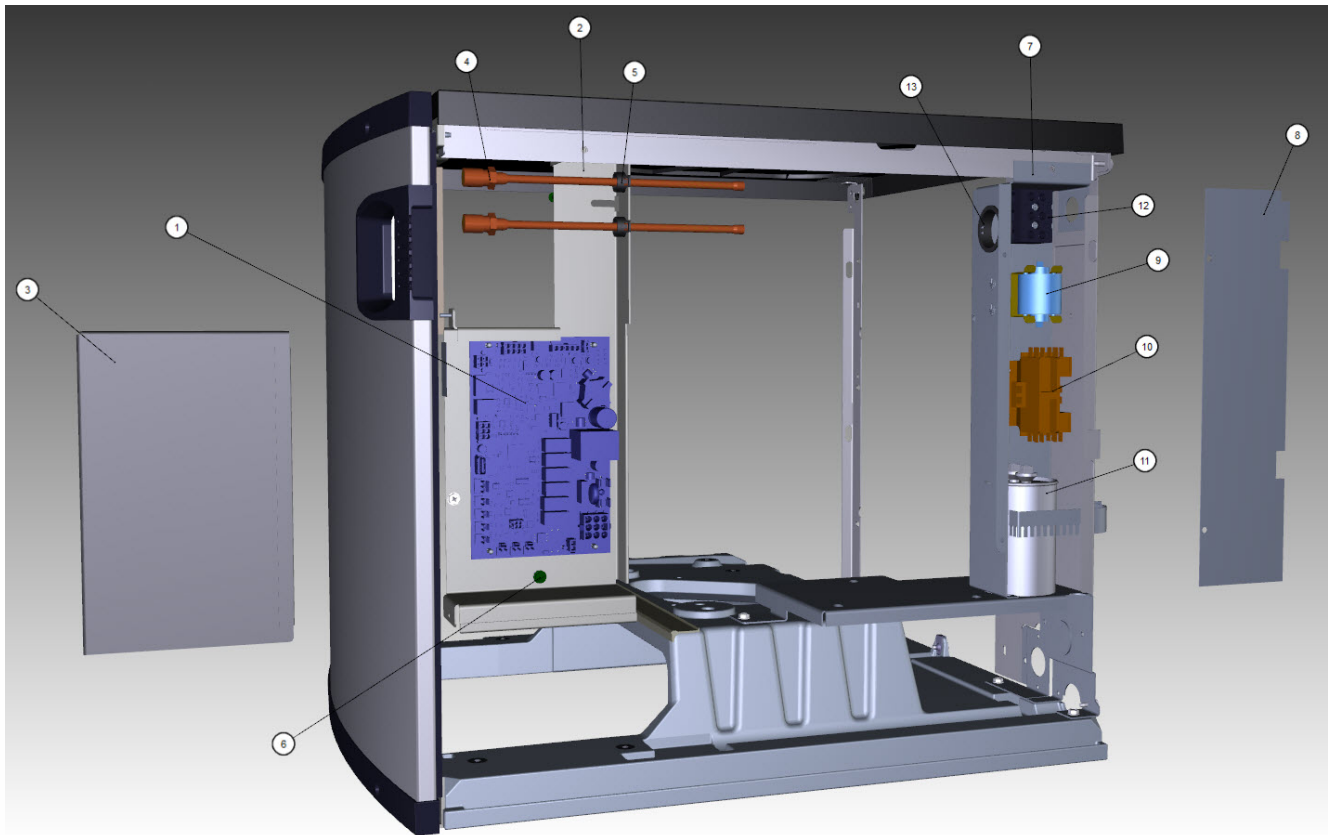
## iT0420, iP0320 - Refrigeration Compartment - Air-cooled Components

#	PART #	DESCRIPTION	QTY	Note
1	3005939	Air Filter - 16.8" x 12.81"		
1a	000009076	Air Filter - 12.5" x 11.63" - R290		
2	000008832	Air Condenser		
2a	000008871	Air Condenser - Micro Channel		[1]
2b	000009060	Air Condenser Mounting Plates - R290 230V/50 Hz/1 Ph		
3	000014015	Fan Shroud		
3a	000009009	Fan Shroud - R290 230V/50 Hz/1ph		[1]
4	2416203	Fan Blade		
4A	2416223	Fan Blade - R290		
5		Fan Motor		
5a	2412929	Fan Motor - 115V/60 Hz/1 Ph		[2]
5b	2412939	Fan Motor - 208-230V/50-60 Hz		[3]
5c	2412823	Fan Motor - 208-230V/50-60 Hz - R290		
6	000014018	Fan Motor Bracket		
6a	000010922	Fan Motor Bracket - R290		
7	5033589	Screw		
7a	5545109	Mounting - Lock Washer		
7b	5429529	Mounting - Hexnut		
8		Fan Bracket Mounting		
8a	5202099	Screw - #10-24 x 0.5" PHIL		
8b	5545109	Mounting - Lock Washer		
8c	5573059	Flat Washer		
8d	5429559	Rubber Wellnut		
9	5202069	Screw - #10-24 x 0.5" HEX		

### PART NOTES:

- [1] - IP0320 R290 Models Only
- [2] - Includes Nuts
- [3] - Includes Nuts.

## iT0420, iP0320 - Control Box



## iT0420, iP0320 - Control Box

IT0420 - Control Box

# iT0420, iP0320 Indigo NXT

## iT0420, iP0320 - Control Box

#	PART #	DESCRIPTION	QTY	Note
1	000015208	Control Board		
1b	4302253	Control Board Mounting Supports		
1a	000015009	Ceramic Fuse - 6.3A		
2	000012264	Refrigeration Service Valve Assembly - 0.3125"		
3	000014395	Control Board Box		
4	000010901	Control Board Box Cover		
5	2502189	Bushing - 0.625"		
6	5202169	Screw - #10-24 x 0.5" Ground		
6a	5573209	Star Washer		
7	000014363	Start Component Box		
8	000010910	Start Components Box Cover		
9	000014323	PTCR - 12A		
10		Contactor		
10a	2006589	Contactor - 115V/60 Hz/1 Ph		
10b	2006599	Contactor - 230V/50-60 Hz/1 Ph		
11a	000010708	Run Capacitor - 115-230V/50-60 Hz/1 Ph		[1]
11b	000010715	Run Capacitor - 230V/50-60 Hz/1 Ph		[2]
11c	000011640	Run Capacitor - 230V/50-60 Hz/1 Ph		[3]
11d	5005309	Capacitor Mounting Bracket		
12	2006143	Terminal Block - 50 Hz - 3 Pole		
13	2500139	Bushing - 1.5"		
14	2500019	Bushing - 1.187"		
15	5202069	Screw - #10-24 x 0.5" HEX		
16	5573209	Star Washer		
17		Control Box Wiring Harness		
17a	000014639	Control Box Wiring Harness - 115V/60 Hz/1 Ph		
17b	000014659	Control Box Wiring Harness - 230V/60 Hz/1 Ph		
17c	000014660	Control Box Wiring Harness - 230V/50 Hz/1 Ph		
18	000011182	Wiring Harness - Compressor - Samsung		
19	000014638	Wiring Harness - PTCR		
20	000014595	Wire Lead - Air		
21		iP0320 R290 Components		
21a	000009209	Contactor Box - R290		
21b	000009210	Contactor Box Cover - R290		
21c	000009211	Contactor Box False Bottom - R290		
21d	2502283	Strain Relief		
21e	000009262	Contactor Wiring Harness - R290		
21f	000009951	Control Box Wiring Harness R290 - 230V/50 Hz/1 Ph to Start Components		
21g	000009195	Start Capacitor - R290		
21h	000009194	Run Capacitor - 230V/50 Hz/1 Ph - R290		
21i	000009258	Start Relay - 230V/50 Hz/1 Ph - R290		
21j	000009064	Compressor Plug - R290		

### PART NOTES:

- [1] - 115V/60 Hz Models
- [2] - 230V/60 Hz Models

iT0420, iP0320 - Control Box

# iT0420, iP0320 Indigo NXT

## iT0420, iP0320 - Control Box

#	PART #	DESCRIPTION	QTY	Note
[3]	-	230V/50 Hz Models		

---

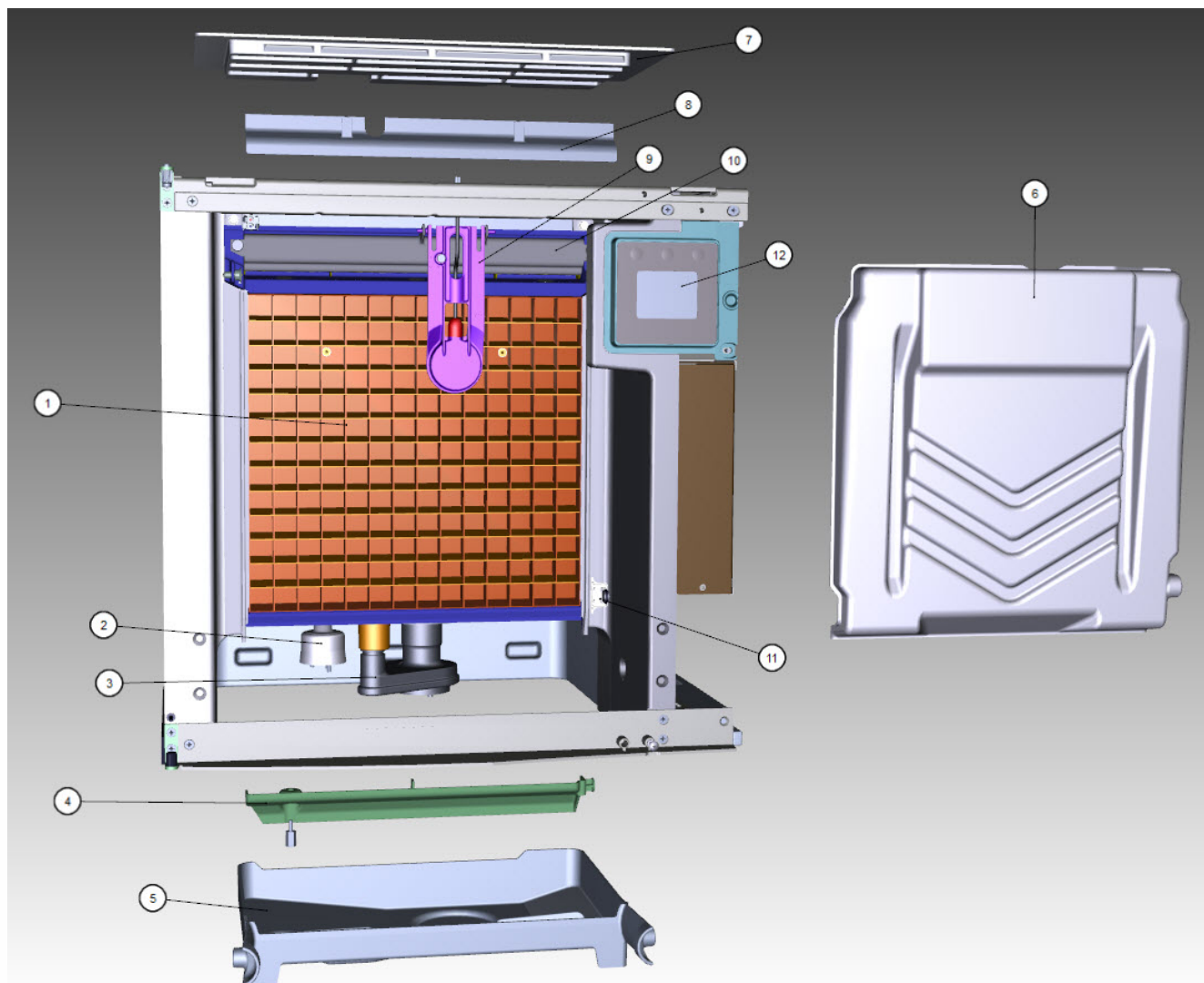
iT0420, iP0320 - Control Box

IT0420 - Control Box



# iT0420, iP0320 Indigo NXT

## iT0420, iP0320 - Evaporator Compartment



iT0420, iP0320 - Evaporator Compartment

# iT0420, iP0320 Indigo NXT

## iT0420, iP0320 - Evaporator Compartment

#	PART #	DESCRIPTION	QTY	Note
1		Evaporator Assembly		
1a	000011339	Evaporator - Dice Cube		
1b	000011340	Evaporator - Half Dice Cube		
1d	7602799	Evaporator Top Frame Assembly - 22"		[1]
1e	4010463	Evaporator Bottom Frame Assembly		
1f	5429139	Hex Nut - #8-32 Brass		
2	000016053	Water Level Probe		[2]
2a	000007099	Wire - Control Box to Probe		[3]
2b	000007053	Water Level Probe - Holder		
2c	5202099	Screw - #10-24 x 0.5" PHIL		[4]
3		Water Pump		
3a	2008929-ORA	Water Pump - 115V/60 Hz		
3b	2008939	Water Pump - 230V/60 Hz		[5]
3c	2008949	Water Pump - 230V/50 Hz		[5]
3d	000013413	Water Pump - 200V/50-60 Hz/1 Ph		
3e	000010244	Water Pump Mount		
4	7602779	Water Diverter - 22" Models		
4a	5305123	Thumbscrew SS - #8-32 x 0.44"		
5	000011512	Water Trough - 22"		
6	4011189	Water Curtain		
7	000009188	Foodzone Seal Panel		
8	6065389	Evaporator Top Filler Panel		[6]
8a	6063339	Bracket - Top Filler Panel		
8b	5202099	Screw - #10-24 x 0.5" PHIL		
9	000015292	Ice Thickness Control Probe		[7]
10	7602789	Water Distribution Tube - 22"		
10a	5004649	O-Rings - 0.675"		[8]
11	000007888	Magnetic Bin Switch		
11a	000014038	Bin Switch Wiring Harness		
12	000015153	Touchscreen Housing Assembly		
13	5004799	Thumbscrew SS - #8-32 x 0.375"		[9]
13a	5004629	O-Ring - 0.125" ID		
14	5004619	Screw - #12-16 x 0.687"		
15	5004659	Water Pump Base O-Ring - 4.00" ID		
16	5004679	Water Pump Outlet O-Ring - 0.875" ID		

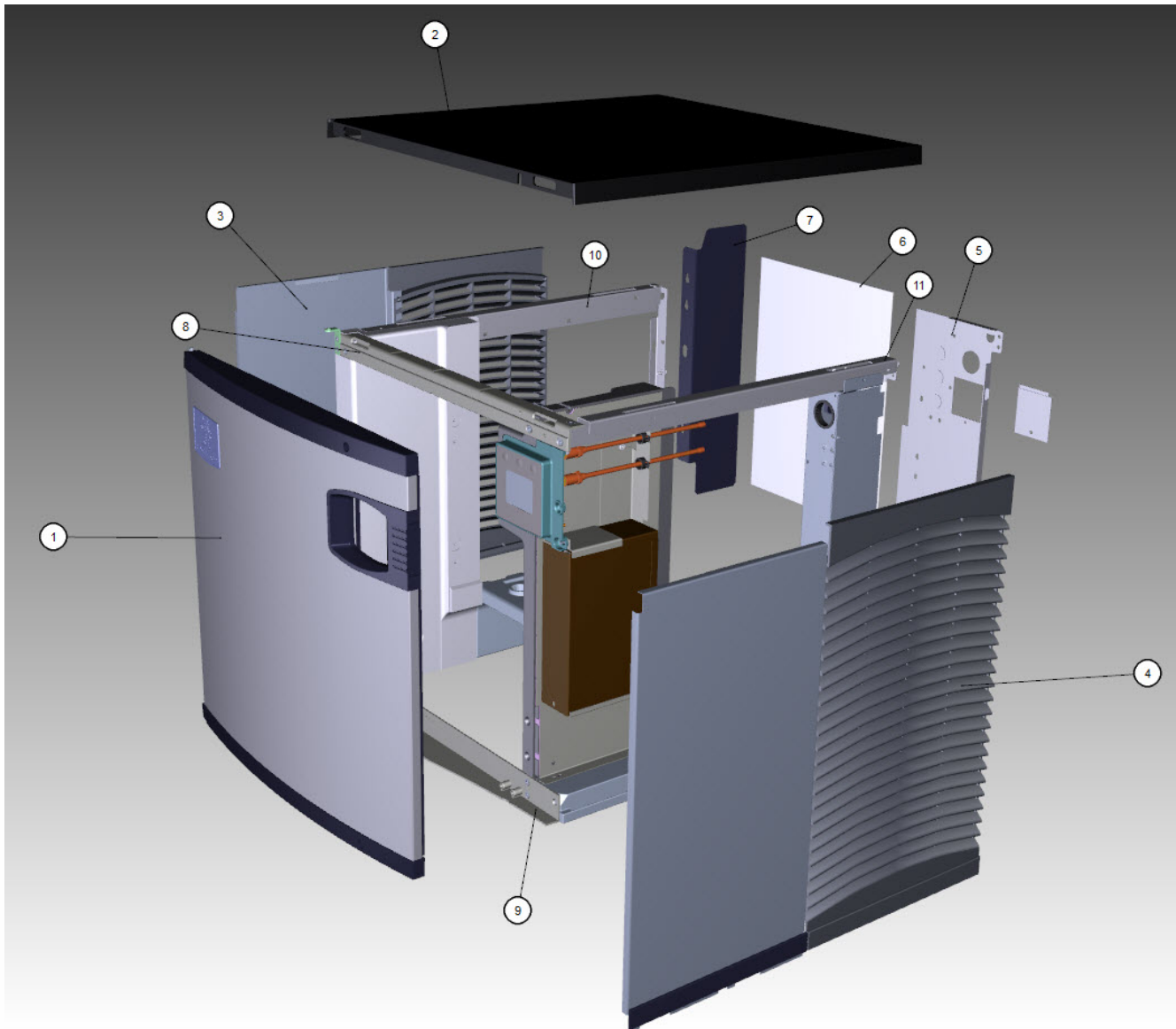
### PART NOTES:

- [1] - Includes top frame disks and hex nuts.
- [2] - Includes probe and wire.
- [3] - No Longer Available -must order Water Level Probe for new wire
- [4] - Mount Water Level Probe Holder
- [5] - Includes O-Rings
- [6] - Includes Cover
- [7] - Includes ice thickness probe, clip and washer.
- [8] - Back of Distribution Assembly
- [9] - Water Distribution Tube Mounting

iT0420, iP0320 - Evaporator Compartment

# iT0420, iP0320 Indigo NXT

## iT0420, iP0320 - Panels



iT0420, iP0320 - Panels

IT0420 - Panels



# iT0420, iP0320 Indigo NXT

## iT0420, iP0320 - Panels

#	PART #	DESCRIPTION	QTY	Note
1	000015669	Front Panel Assembly - 22" x 21.5"		
1a	040008050	Front Panel Assembly - 22" x 21.5" - SS		[1]
1b	000006560	Front Panel Top Endcap		
1c	040007383	Front Panel Top Endcap		[1]
1d	000006565	Front Panel Bottom Endcap		
1e	040007384	Front Panel Bottom Endcap		[1]
1f	000007047	Front Panel LCD Frame without Key Guard		
1g	5004899	Front Panel Screw		
1h	000009024	Foam Tape - 0.375" x 0.375" x 12.0"		[2]
2	4012029	Top Cover		
3	000012616	Left Side Panel - 21.5" H		
3a	040005623	Left Side Panel - 21.5" H - SS		[3]
4	000012615	Right Side Panel - 21.5" H		
4a	040005622	Right Side Panel - 21.5" H - SS		[3]
5	000014394	Back Panel - Air-cooled		
5a	000010907	Back Panel with Electrical Connection Box - Water-cooled Models		
5b	000008022	Back Coupling Panel - Water-cooled Models		
5c	000016062	Back Panel - Air-cooled Models - R290 Only		
6	3005939	Air Filter - 16.8" x 12.81"		
6a	000009076	Air Filter - 12.5" x 11.63" - R290		[4]
7	000007314	Air Baffle Assembly		
8	000010050	Front Top Support		
8a	5005379	Mounting Screw - #8-32 x 1.0" PHIL		
8b	5005099	Screw - #10-16 x 0.625"		
9	7602829	Bottom Door Frame		
9a	5005379	Mounting Screw - #8-32 x 1.0" PHIL		
9b	5202099	Screw - #10-24 x 0.5" PHIL		
10	6068649	Left Top Channel		
11	000010981	Right Top Channel		
12	000010299	Left Corner Post		
13	3005579	Left Panel Pivot Leaf Hinge		[5]
13a	5005379	Mounting Screw - #8-32 x 1.0" PHIL		
13b	000001127	Tapping Plate - Panel Hinge Screws		
14		Electrical Box on Rear of Ice Machine		
14a	6067289	Rear Connection Box		
14b	6067299	Cover - Rear Connection Box		
14c	2006143	Terminal Block - 50 Hz - 3 Pole		
14d	5202169	Screw - #10-24 x 0.5" Ground		
15	K00438	Top Air Discharge Kit		[6]
16	7112319	Cartoning		

### PART NOTES:

- [1] - APAC EMEA Only  
Only Used with Serial Numbers Beginning with 31
- [2] - Priced per foot. Must order 25 feet.

iT0420, iP0320 - Panels

# iT0420, iP0320 Indigo NXT

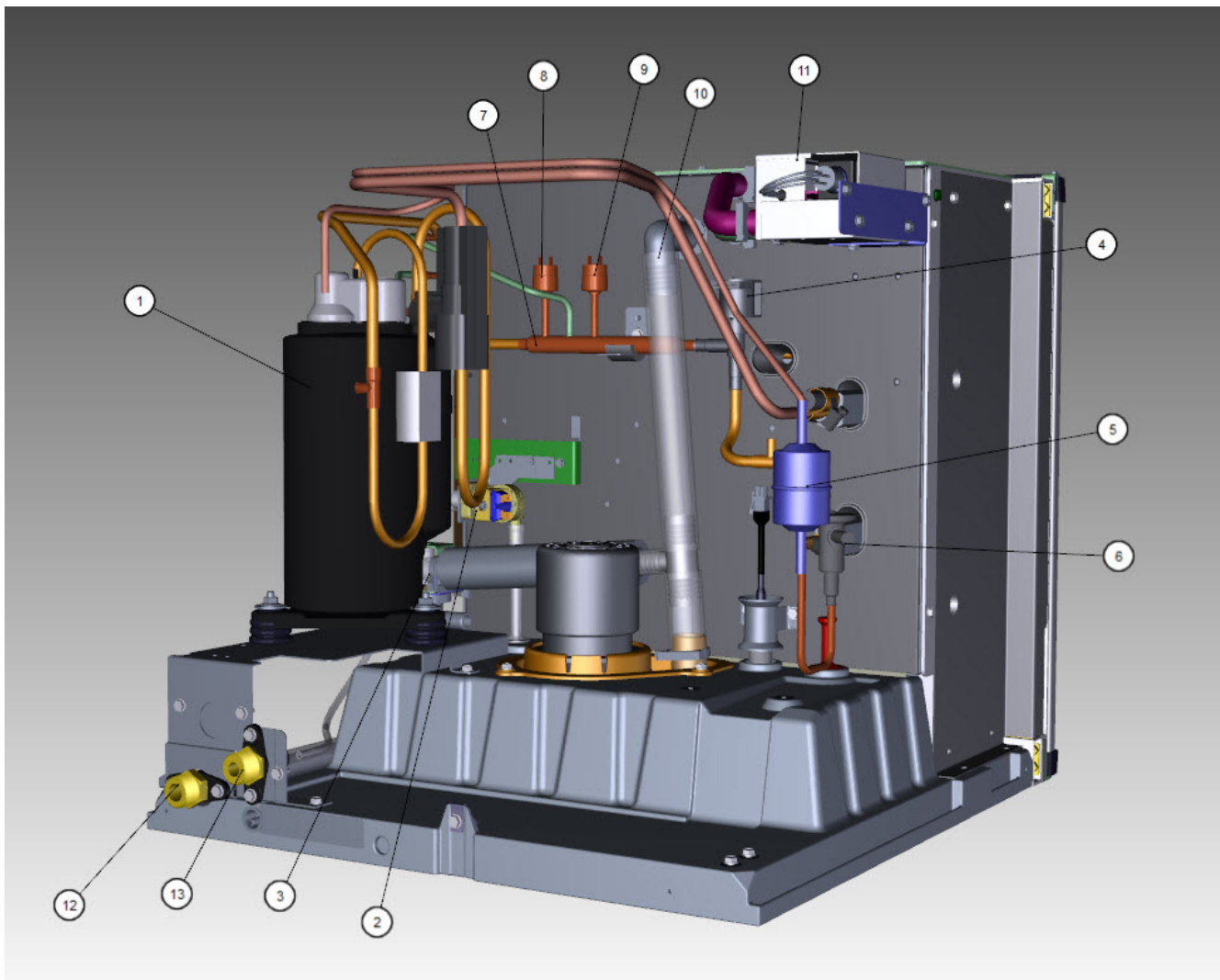
## iT0420, iP0320 - Panels

#	PART #	DESCRIPTION	QTY	Note
[3]	-	APAC and EMEA Only Only Used with Serial Numbers Beginning with 31		
[4]	-	IP0320 R290 Models Only		
[5]	-	Top or Bottom		
[6]	-	Top air discharge kits are used when there is not sufficient clearance on the sides of an air-cooled machine. The kit will change the side panels and top panel so the air intake is from the back of the machine and the exhaust is re-routed out of the top of the machine rather than the sides.		

Includes Louvered Top Cover, Solid LH Panel, Solid RH Panel and Screws.

# iT0420, iP0320 Indigo NXT

## iT0420, iP0320 - Refrigeration Compartment - Common Components



iT0420, iP0320 - Refrigeration Compartment - Common Components

# iT0420, iP0320 Indigo NXT

## iT0420, iP0320 - Refrigeration Compartment - Common Components

#	PART #	DESCRIPTION	QTY	Note
1		Compressor		
1a	000010315	Compressor - Samsung - 115V/60 Hz/1 Ph		
1b	000010316	Compressor - Samsung - 208-230V/60 Hz/1 Ph		
1c	000010464	Compressor - Samsung - 230V/50 Hz/1 Ph		
1d	000011143	Overload Protector - 230V/60 Hz/1 Ph		
1e	000010853	Overload Protector - Bracket		
1f	000010332	Compressor - R290 - 230V/50 Hz/1 Ph		
2		Water Inlet Valve with Bracket		
2a	000009120	Water Inlet Valve - 115V/60 Hz/1 Ph		[1]
2b	000009126	Water Inlet Valve - 208-230V/50-60 Hz		[1]
3		Water Dump Valve		[2]
3a	000014062	Water Dump Valve - 115V/60 Hz		
3b	000014063	Water Dump Valve - 208-230V/50-60 Hz		
3c	6058459	Mounting Bracket - Water Dump Valve		
3d	4420383	Clear Tubing - 0.625" ID		
4		Harvest Valve		
4a	000015045	Solenoid Valve 0.375" x 0.375" Including 115V/60 Hz Electrical Coil		[3]
4b	000005156	Solenoid Valve Coil Only - 115V/60 Hz		
4c	000015044	Solenoid Valve 0.375" x 0.375" Including 208-230V/50-60 Hz Electrical Coil		[3]
4d	000005157	Solenoid Valve Coil Only - 230V/50-60 Hz		
5	000015361	Drier with Access Port - 0.25"		
5a	8930259	Drier without Access Port - 0.25"		[4]
6	000015018	Expansion Valve		
6a	000009954	Expansion Valve - R290 - 230V/50 Hz/1 Ph		[5]
6b	000012443	Valve Insulation Boot - Body - Danfoss		
6c	4007203	Valve Insulation Boot - Bulb		
7	000011170	Manifold Strainer		
7a	6058571	Bracket - Access Valves/Manifold Strainer		
7b	000010699	Grommet - Manifold Strainer		
8	000013531	Fan Cycling Control - 335-275 psig		
8a	000013507	Fan Cycling Control - 150-200 psig - R290		
9	000013576	High Pressure Cut-out 450-600 psig		
9a	000013577	High Pressure Cut-out - 250-350 psig - R290		
10	000015334	Insulated Tube		[6]
10a	5650609	Snap Clamp - 1.0" ID		
10b	5650709	Snap Clamp - 0.8" x 0.9" ID		
11	K00454	LuminIce II - Bulb		
12	000005423	Female Wing Adapter - 0.5"		
12a	4420291	Tygon Tube - 0.25" OD		
13	8706093	Female Wing Adapter - Brass - 0.375"		[7]
13a	1360961	Male Connector - 0.375"		
14	000015573	Thermistor with Spring Clips		
15	000001382	Vinyl Tubing 0.625" ID		[8]
15a	6038831	Insulation - 0.88" ID x 0.25" W x 13.5" L		
15b	5650709	Snap Clamp - 0.8" x 0.9" ID		

iT0420, iP0320 - Refrigeration Compartment - Common Components

# iT0420, iP0320 Indigo NXT

## iT0420, iP0320 - Refrigeration Compartment - Common Components

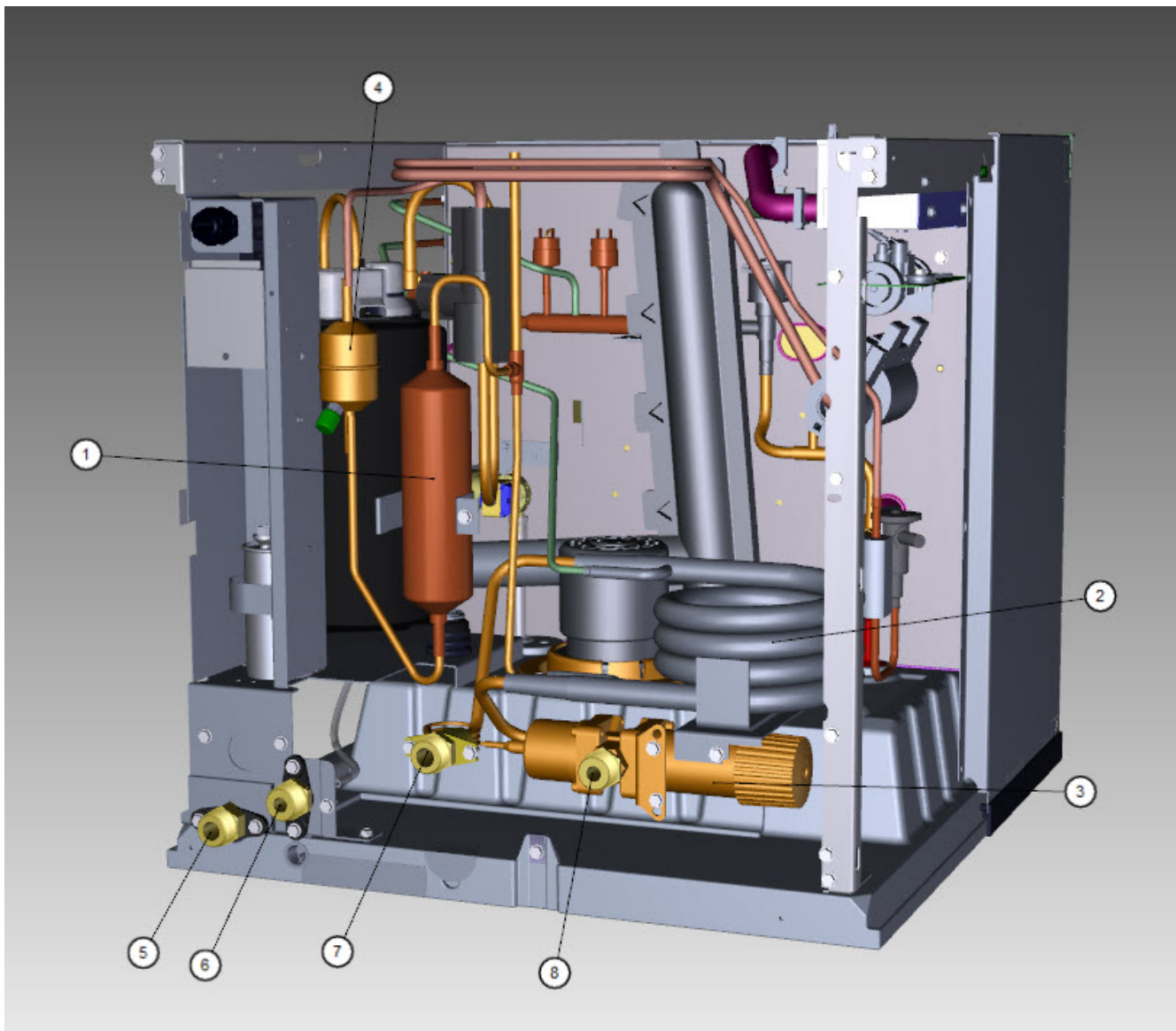
#	PART #	DESCRIPTION	QTY	Note
16	4010439	Tubing - Water Inlet Valve		
17	000000288	Clip-on Tubing Elbow		
20		Compressor Mounting		
20a	000015352	Compressor Base - Metal		[9]
20aa	000015930	Compressor Base - Plastic		[10]
20b	8503069	Mounting - Rubber Grommet		
20c	8503949	Mounting - Sleeve		
20d	5004819	Compressor Mounting - Bolt		
20e	5004829	Compressor Mounting - Nut		
21	5650529	Clamp - Expansion Valve Bulb		
22	3000503	Strap - Expansion Valve Bulb - 0.5"		
23	5202069	Screw - #10-24 x 0.5" HEX		
24	000011604	Plug - Float Hole		
25	000010320	Terminal Cover		

### PART NOTES:

- [1] - 0.5 gpm  
Includes water valve inlet, bracket, screws, adapter and locking clip.
- [2] - with bracket
- [3] - With Screen
- [4] - Must be Used on IP0320 Models (R290)
- [5] - IP0320 R290 Models Only
- [6] - vinyl tubing from distribution tube to water pump dump valve
- [7] - Brass  
If replacing a nylon fitting you must order 1360961
- [8] - dump valve to drain adapter
- [9] - IT0420 Models
- [10] - IP0320 Models

# iT0420, iP0320 Indigo NXT

## iT0420 - Refrigeration Compartment- Water-cooled Components



iT0420 - Refrigeration Compartment- Water-cooled Components

# iT0420, iP0320 Indigo NXT

## iT0420 - Refrigeration Compartment- Water-cooled Components

#	PART #	DESCRIPTION	QTY	Note
1	000008892	Receiver		
2	000000045	Water-cooled Condenser		
3	000013475	Water Regulating Valve - 0.375"		
4	8930259	Drier without Access Port - 0.25"		
5	000005423	Female Wing Adapter - 0.5"		
6	8706083	Female Wing Adapter - Brass - 0.5"		
7	8706103	Female Wing Adapter - Brass - 0.5" NPT x 0.375" ODF		
8	8700393	Reducing Nipple - 0.75" x 0.38"		
9	6000541	Receiver Strap		
10	5002159	Elbow - 0.375" MF x 0.375" MPT		
11	5202069	Screw - #10-24 x 0.5" HEX		
12	5573419	Washer		
13	000010604	Mounting Base - Water Condenser or Receiver		

---

iT0420 - Refrigeration Compartment- Water-cooled Components