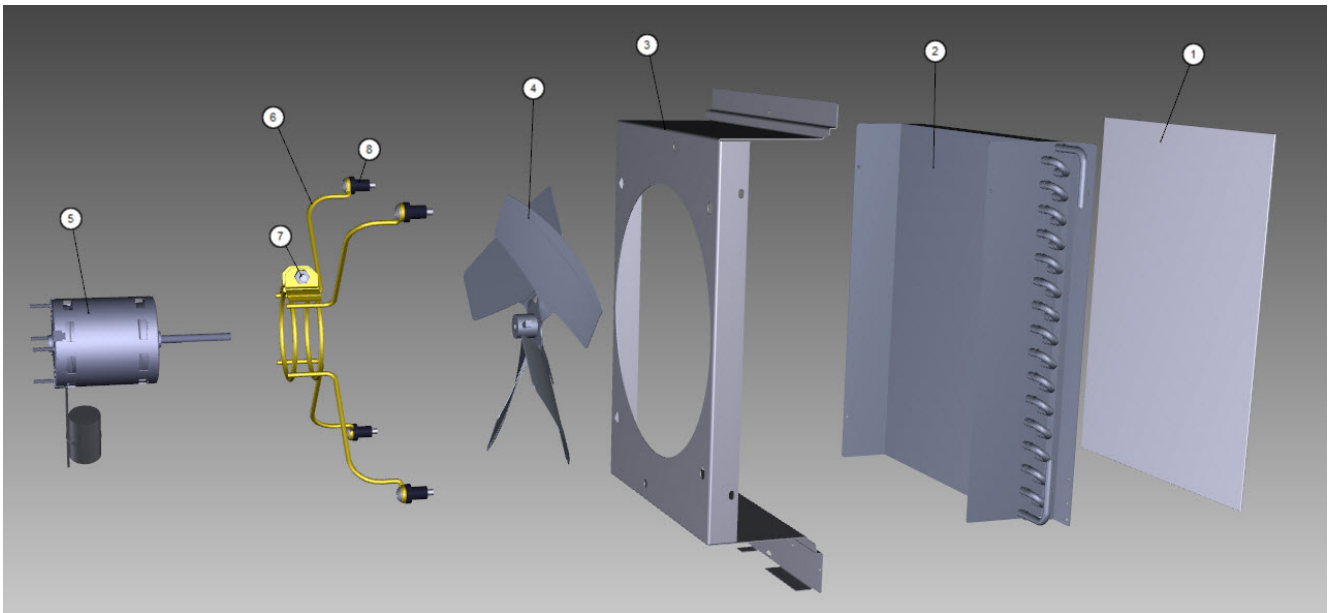


# iT0620 Indigo NXT

## iT0620 - Refrigeration Compartment - Air-cooled Components



# iT0620 Indigo NXT

## iT0620 - Refrigeration Compartment - Air-cooled Components

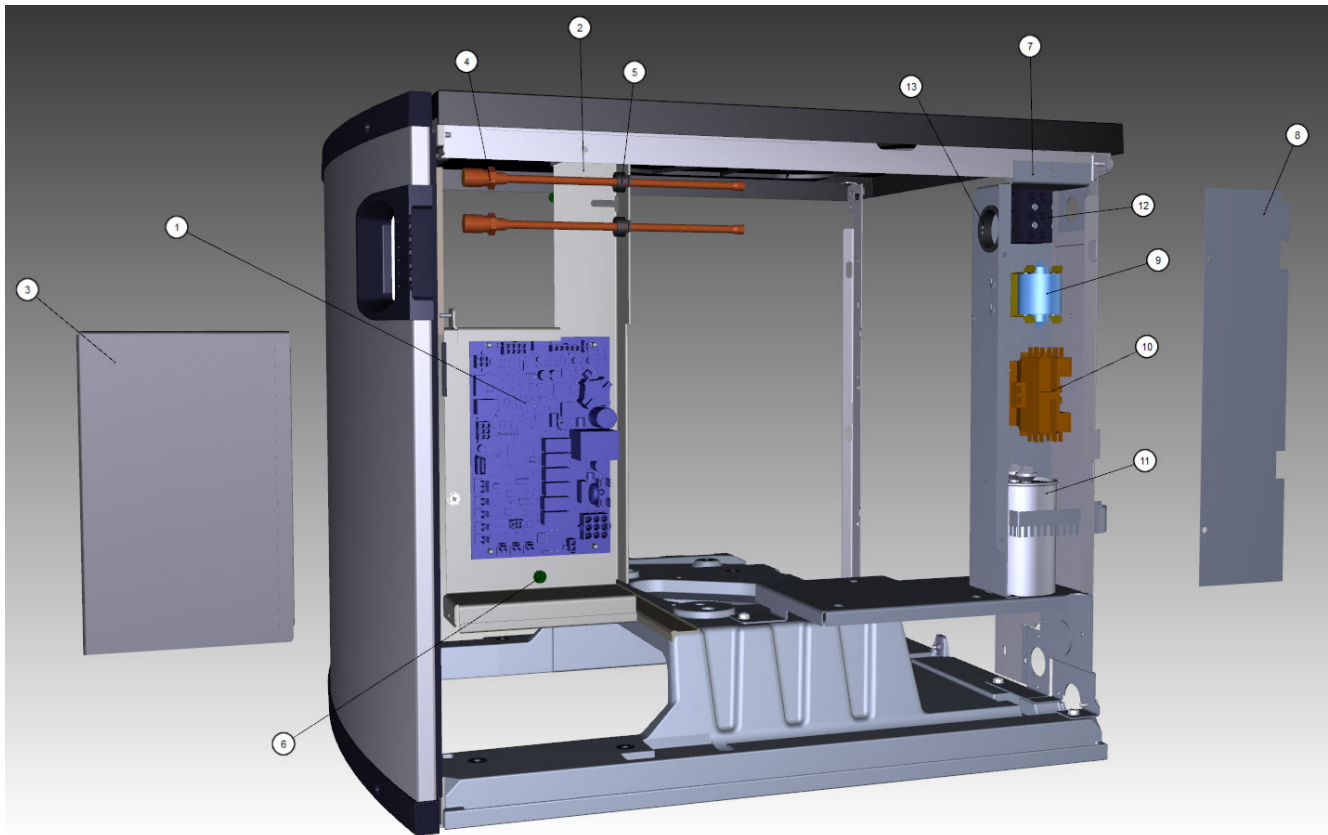
#	PART #	DESCRIPTION	QTY	Note
1	3005569	Air Filter - 14.29" x 16.94"		
2	000008850	Air Condenser		
3	000013957	Fan Shroud		
4	2416203	Fan Blade		
5		Fan Motor		
5a	2412929	Fan Motor - 115V/60 Hz/1 Ph		[1]
5b	2412939	Fan Motor - 208-230V/50-60 Hz		[2]
6	000014018	Fan Motor Bracket		
7	5033589	Screw		
7a	5545109	Mounting - Lock Washer		
7b	5429529	Mounting - Hexnut		
8		Fan Bracket Mounting		
8a	5202099	Screw - #10-24 x 0.5" PHIL		
8b	5545109	Mounting - Lock Washer		
8c	5573059	Flat Washer		
8d	5429559	Rubber Wellnut		
9	5202069	Screw - #10-24 x 0.5" HEX		

### PART NOTES:

- [1] - Includes Nuts
- [2] - Includes Nuts.

# iT0620 Indigo NXT

## iT0620 - Control Box



iT0620 - Control Box

IT0620 - Control Box

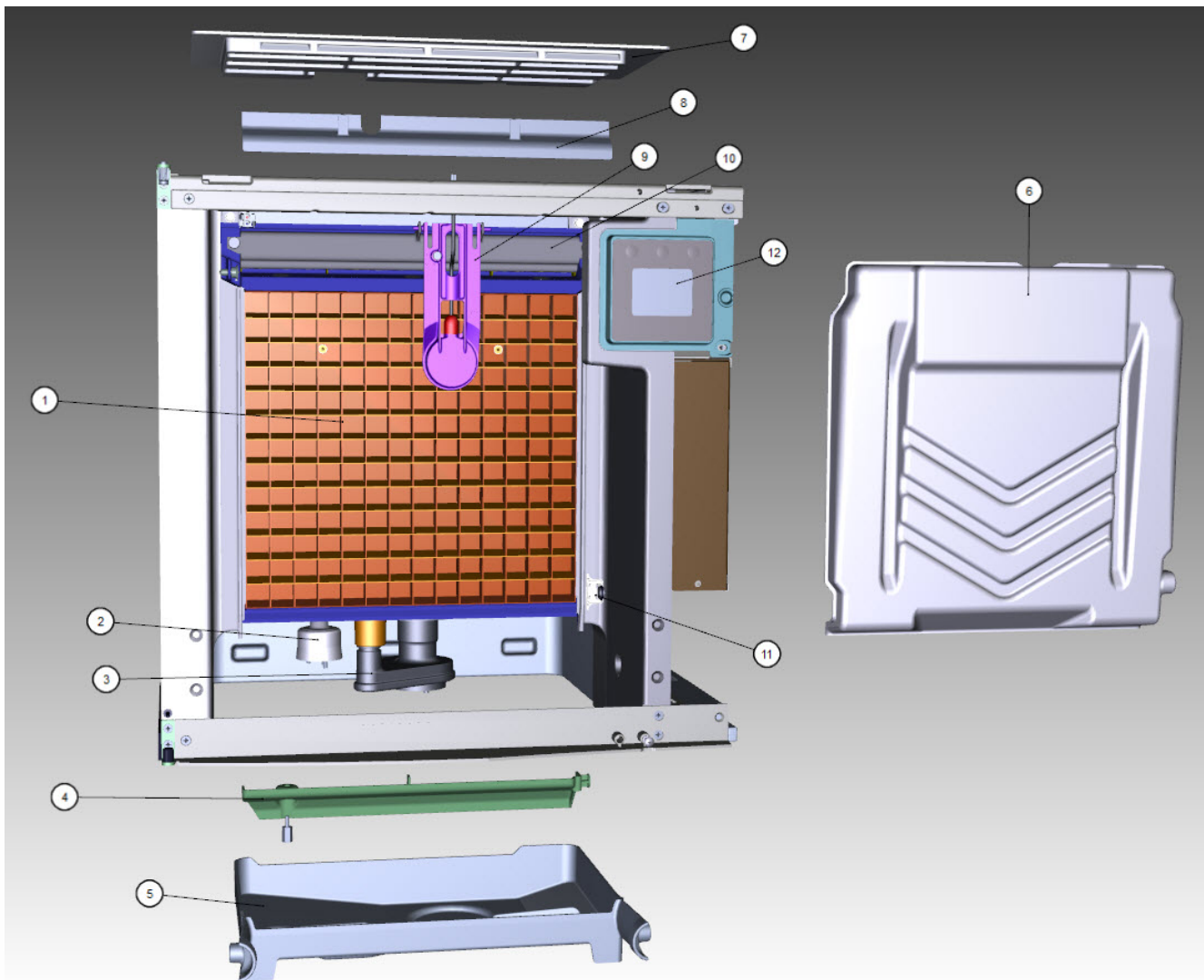
# iT0620 Indigo NXT

## iT0620 - Control Box

#	PART #	DESCRIPTION	QTY	Note
1	000015208	Control Board		
1b	4302253	Control Board Mounting Supports		
1a	000015009	Ceramic Fuse - 6.3A		
2	000012264	Refrigeration Service Valve Assembly - 0.3125"		
3	000014395	Control Board Box		
4	000010901	Control Board Box Cover		
5	2502189	Bushing - 0.625"		
6	5202169	Screw - #10-24 x 0.5" Ground		
6a	5573209	Star Washer		
7	000014363	Start Component Box		
8	000010910	Start Components Box Cover		
9		PTCR		
9a	000014323	PTCR - 12A		
10		Contactor		
10a	2006589	Contactor - 115V/60 Hz/1 Ph		
10b	2006599	Contactor - 230V/50-60 Hz/1 Ph		
11	000005488	Run Capacitor - 115-230V/50-60 Hz/1 Ph		
11a	000011640	Run Capacitor - 230V/50-60 Hz/1 Ph		
11b	5005309	Capacitor Mounting Bracket		
12	2006143	Terminal Block - 50 Hz - 3 Pole		
13	2500139	Bushing - 1.5"		
14	2500019	Bushing - 1.187"		
15	5202069	Screw - #10-24 x 0.5" HEX		
16	5573209	Star Washer		
17		Control Box Wiring Harness		
17a	000014639	Control Box Wiring Harness - 115V/60 Hz/1 Ph		
17b	000014659	Control Box Wiring Harness - 230V/60 Hz/1 Ph		
17c	000014660	Control Box Wiring Harness - 230V/50 Hz/1 Ph		
18	000011182	Wiring Harness - Compressor - Samsung		
19	000014638	Wiring Harness - PTCR		
20	000014595	Wire Lead - Air		

# iT0620 Indigo NXT

## iT0620 - Evaporator Compartment



iT0620 - Evaporator Compartment

# iT0620 Indigo NXT

## iT0620 - Evaporator Compartment

#	PART #	DESCRIPTION	QTY	Note
1		Evaporator Assembly		
1a	000011339	Evaporator - Dice Cube		
1b	000011340	Evaporator - Half Dice Cube		
1c	000011341	Evaporator - Regular Cube		
1d	7602799	Evaporator Top Frame Assembly - 22"		[1]
1e	4010463	Evaporator Bottom Frame Assembly		
1f	5429139	Hex Nut - #8-32 Brass		
2	000016053	Water Level Probe		[2]
2a	000007099	Wire - Control Box to Probe		[3]
2b	000007053	Water Level Probe - Holder		
2c	5202099	Screw - #10-24 x 0.5" PHIL		[4]
3		Water Pump		
3a	2008929-ORA	Water Pump - 115V/60 Hz		
3b	2008939	Water Pump - 230V/60 Hz		[5]
3c	2008949	Water Pump - 230V/50 Hz		[5]
3d	000013413	Water Pump - 200V/50-60 Hz/1 Ph		
3e	000010244	Water Pump Mount		
4	7602779	Water Diverter - 22" Models		
4a	5305123	Thumbscrew SS - #8-32 x 0.44"		
5	000011512	Water Trough - 22"		
6	4011189	Water Curtain		
7	000009188	Foodzone Seal Panel		
8	6065389	Evaporator Top Filler Panel		[6]
8a	6063339	Bracket - Top Filler Panel		
8b	5202099	Screw - #10-24 x 0.5" PHIL		
9	000015292	Ice Thickness Control Probe		[7]
10	7602789	Water Distribution Tube - 22"		
10a	5004649	O-Rings - 0.675"		[8]
11	000007888	Magnetic Bin Switch		
11a	000014038	Bin Switch Wiring Harness		
12	000015153	Touchscreen Housing Assembly		
13	5004799	Thumbscrew SS - #8-32 x 0.375"		[9]
13a	5004629	O-Ring - 0.125" ID		
14	5004619	Screw - #12-16 x 0.687"		
15	5004659	Water Pump Base O-Ring - 4.00" ID		
16	5004679	Water Pump Outlet O-Ring - 0.875" ID		

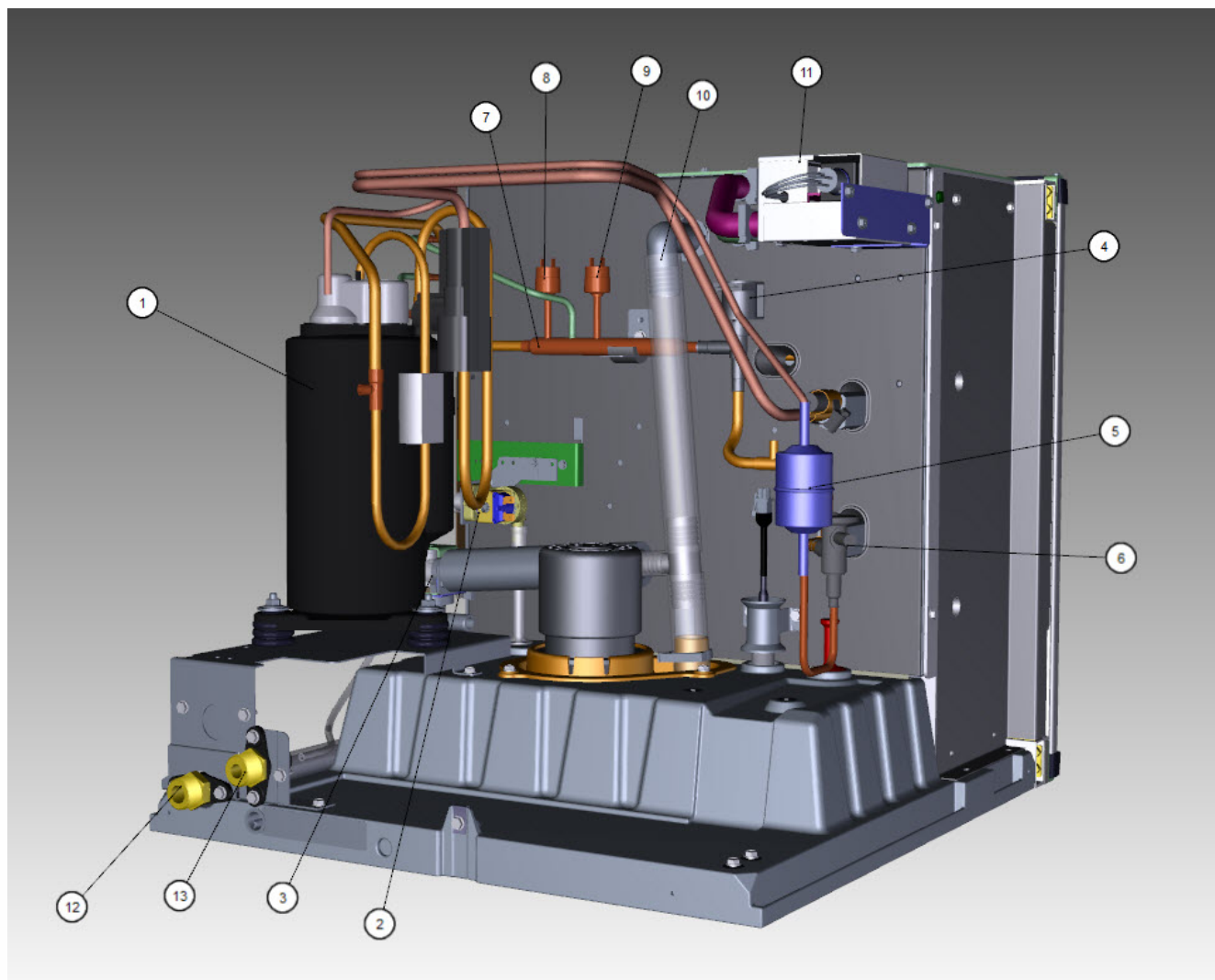
### PART NOTES:

- [1] - Includes top frame disks and hex nuts.
- [2] - Includes probe and wire.
- [3] - No Longer Available -must order Water Level Probe for new wire
- [4] - Mount Water Level Probe Holder
- [5] - Includes O-Rings
- [6] - Includes Cover
- [7] - Includes ice thickness probe, clip and washer.
- [8] - Back of Distribution Assembly
- [9] - Water Distribution Tube Mounting

## iT0620 - Evaporator Compartment

# iT0620 Indigo NXT

## iT0620 - Refrigeration Compartment - Common Components



iT0620 - Refrigeration Compartment - Common Components

# iT0620 Indigo NXT

## iT0620 - Refrigeration Compartment - Common Components

#	PART #	DESCRIPTION	QTY	Note
1		Compressor		
1a	000010462	Compressor - Samsung - 115V/60 Hz/1 Ph		
1b	000010463	Compressor - Samsung - 230V/60 Hz/1 Ph		
1c	000010464	Compressor - Samsung - 230V/50 Hz/1 Ph		
1d	000011145	Overload Protector - 115V/60 Hz/1 Ph		
1e	000014410	Overload Protector - 230V/60 Hz/1 Ph		
1f	000010853	Overload Protector - Bracket		
2		Water Inlet Valve with Bracket		
2a	000009120	Water Inlet Valve - 115V/60 Hz/1 Ph		[1]
2b	000009126	Water Inlet Valve - 208-230V/50-60 Hz		[1]
3		Water Dump Valve		[2]
3a	000014062	Water Dump Valve - 115V/60 Hz		
3b	000014063	Water Dump Valve - 208-230V/50-60 Hz		
3c	6058459	Mounting Bracket - Water Dump Valve		
3d	4420383	Clear Tubing - 0.625" ID		
4		Harvest Valve		
4a	000015045	Solenoid Valve 0.375" x 0.375" Including 115V/60 Hz Electrical Coil		[3]
4b	000005156	Solenoid Valve Coil Only - 115V/60 Hz		
4c	000015044	Solenoid Valve 0.375" x 0.375" Including 208-230V/50-60 Hz Electrical Coil		[3]
4d	000005157	Solenoid Valve Coil Only - 230V/50-60 Hz		
5	000015361	Drier with Access Port - 0.25"		
6	000015020	Expansion Valve		
6a	000012443	Valve Insulation Boot - Body - Danfoss		
6b	4007203	Valve Insulation Boot - Bulb		
7	000011170	Manifold Strainer		
7a	6058571	Bracket - Access Valves/Manifold Strainer		
7b	000010699	Grommet - Manifold Strainer		
8	000013531	Fan Cycling Control - 335-275 psig		
9	000013576	High Pressure Cut-out 450-600 psig		
10	000015334	Insulated Tube		[4]
10a	5650609	Snap Clamp - 1.0" ID		
10b	5650709	Snap Clamp - 0.8" x 0.9" ID		
11	K00454	Luminice II - Bulb		
12	000005423	Female Wing Adapter - 0.5"		
12a	4420291	Tygon Tube - 0.25" OD		
13	8706093	Female Wing Adapter - Brass - 0.375"		[5]
13a	1360961	Male Connector - 0.375"		
14	000015573	Thermistor with Spring Clips		
14a	5650733	Cable Tie - 8.0" L		
15	000001382	Vinyl Tubing 0.625" ID		[6]
15a	6038831	Insulation - 0.88" ID x 0.25" W x 13.5" L		
15b	5650709	Snap Clamp - 0.8" x 0.9" ID		
16		Air Assist		
16a	000007222	Air Assist - 115V		
16b	000007223	Air Assist - 230V		

## iT0620 - Refrigeration Compartment - Common Components



# iT0620 Indigo NXT

## iT0620 - Refrigeration Compartment - Common Components

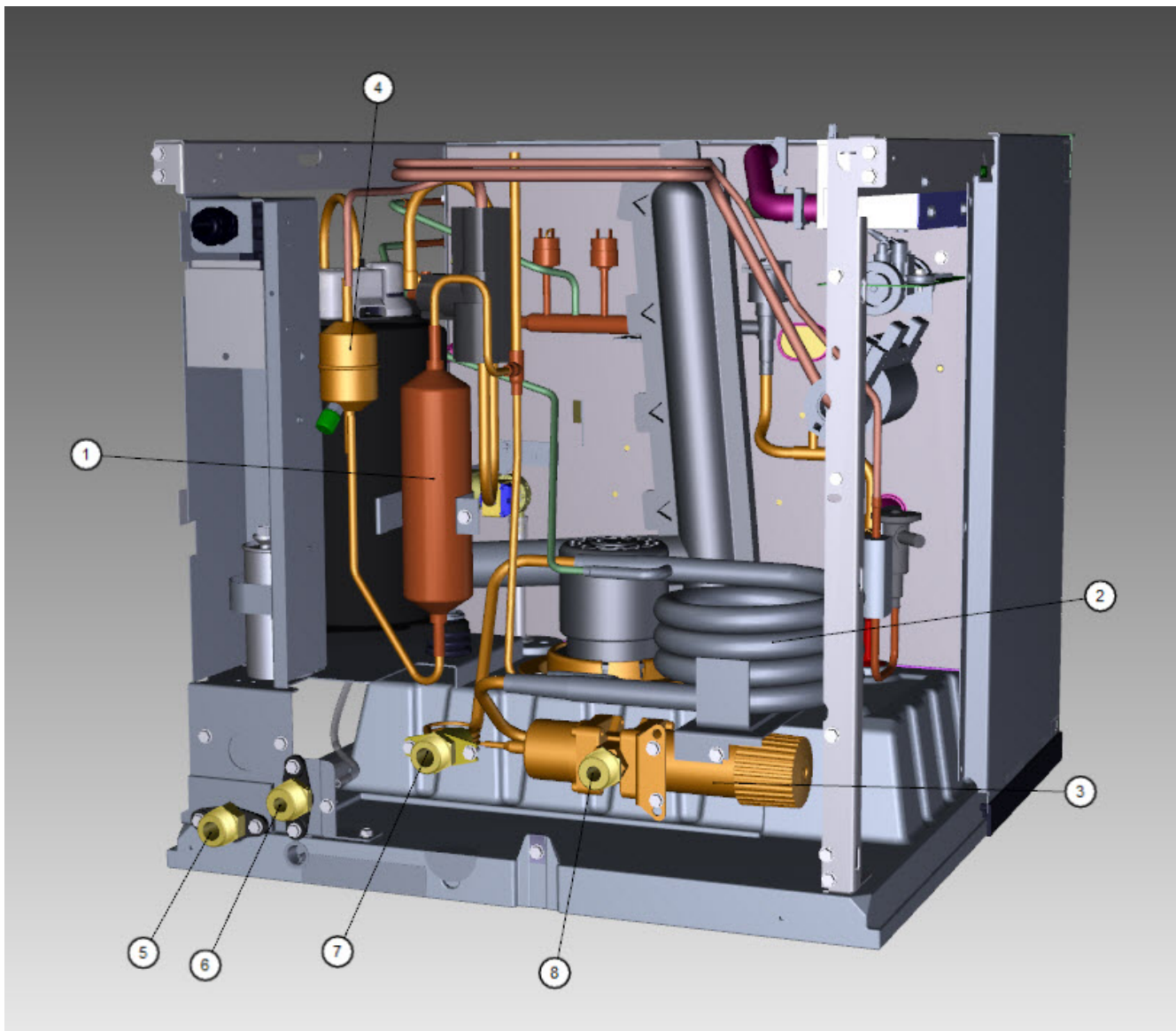
#	PART #	DESCRIPTION	QTY	Note
16c	4011739	Air Manifold		[7]
16d	000006489	Air Assist Bracket		
16e	3001453	Air Assist - Nozzle		[8]
16f	4420883	Vinyl Tubing - 0.25" ID		
16g	9002593	Tubing, Clear PVC – 0.125" ID x 0.25" OD		
17	4010439	Tubing - Water Inlet Valve		
17a	000000288	Clip-on Tubing Elbow		
20		Compressor Mounting		
20a	000015352	Compressor Base - Metal		
20b	8503069	Mounting - Rubber Grommet		
20c	8503949	Mounting - Sleeve		
20d	5004819	Compressor Mounting - Bolt		
20e	5004829	Compressor Mounting - Nut		
21	5650529	Clamp - Expansion Valve Bulb		
22	3000503	Strap - Expansion Valve Bulb - 0.5"		
23	5202069	Screw - #10-24 x 0.5" HEX		
24	000011604	Plug - Float Hole		
25	000010320	Terminal Cover		

### PART NOTES:

- [1] - 0.5 gpm  
Includes water valve inlet, bracket, screws, adapter and locking clip.
- [2] - with bracket
- [3] - With Screen
- [4] - vinyl tubing from distribution tube to water pump dump valve
- [5] - Brass  
If replacing a nylon fitting you must order 1360961
- [6] - dump valve to drain adapter
- [7] - Air Pump Tubing Outlet
- [8] - Nonreplacable - Soldered in place

# iT0620 Indigo NXT

## iT0620 - Refrigeration Compartment - Water-cooled Components



iT0620 - Refrigeration Compartment - Water-cooled Components

# iT0620 Indigo NXT

## iT0620 - Refrigeration Compartment - Water-cooled Components

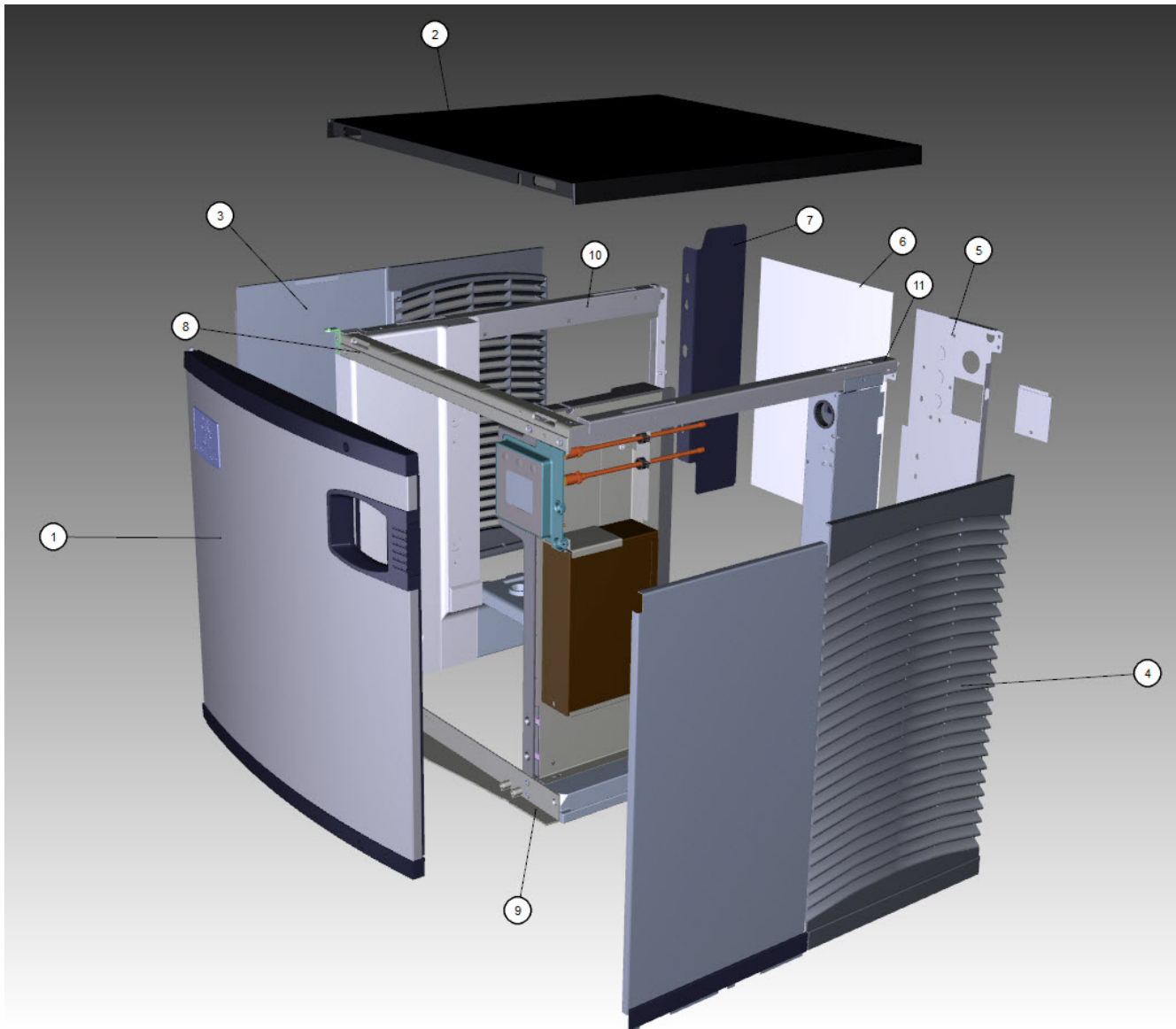
#	PART #	DESCRIPTION	QTY	Note
1	000008892	Receiver		
2	000000045	Water-cooled Condenser		
3	000013475	Water Regulating Valve - 0.375"		
4	8930259	Drier without Access Port - 0.25"		
5	000005423	Female Wing Adapter - 0.5"		
6	8706083	Female Wing Adapter - Brass - 0.5"		
7	8706103	Female Wing Adapter - Brass - 0.5" NPT x 0.375" ODF		
8	8700393	Reducing Nipple - 0.75" x 0.38"		
9	6000541	Receiver Strap		
10	5002159	Elbow - 0.375" MF x 0.375" MPT		
11	5202069	Screw - #10-24 x 0.5" HEX		
12	5573419	Washer		
13	000010604	Mounting Base - Water Condenser or Receiver		

---

iT0620 - Refrigeration Compartment - Water-cooled Components

# iT0620 Indigo NXT

## iT0620 - Panels



# iT0620 Indigo NXT

## iT0620 - Panels

#	PART #	DESCRIPTION	QTY	Note
1	000015669	Front Panel Assembly - 22" x 21.5"		
1a	040008050	Front Panel Assembly - 22" x 21.5" - SS		[1]
1b	000006560	Front Panel Top Endcap		
1c	040007383	Front Panel Top Endcap		[1]
1d	000006565	Front Panel Bottom Endcap		
1e	040007384	Front Panel Bottom Endcap		[1]
1f	000007047	Front Panel LCD Frame without Key Guard		
1g	5004899	Front Panel Screw		
1h	000009024	Foam Tape - 0.375" x 0.375" x 12.0"		[2]
2	4012029	Top Cover		
3	000012616	Left Side Panel - 21.5" H		
3a	040005623	Left Side Panel - 21.5" H - SS		[3]
4	000012615	Right Side Panel - 21.5" H		
4a	040005622	Right Side Panel - 21.5" H - SS		[3]
5	000014362	Back Panel - Air-cooled		
6	3005569	Air Filter - 14.29" x 16.94"		
7	000007314	Air Baffle Assembly		
8	000010050	Front Top Support		
8a	5005379	Mounting Screw - #8-32 x 1.0" PHIL		
8b	5005099	Screw - #10-16 x 0.625"		
9	7602829	Bottom Door Frame		
9a	5005379	Mounting Screw - #8-32 x 1.0" PHIL		
9b	5202099	Screw - #10-24 x 0.5" PHIL		
10	6068649	Left Top Channel		
11	000010981	Right Top Channel		
12	000010907	Back Panel with Electrical Connection Box - Water-cooled Models		
13	000008022	Back Coupling Panel - Water-cooled Models		
14	5004899	Front Panel Screw		
15	000010299	Left Corner Post		
16	3005579	Left Panel Pivot Leaf Hinge		[4]
16a	5005379	Mounting Screw - #8-32 x 1.0" PHIL		
16b	000001127	Tapping Plate - Panel Hinge Screws		
17		Electrical Box on Rear of Ice Machine		
17a	6067289	Rear Connection Box		
17b	6067299	Cover - Rear Connection Box		
17c	2006143	Terminal Block - 50 Hz - 3 Pole		
17d	5202169	Screw - #10-24 x 0.5" Ground		
18	K00438	Top Air Discharge Kit		[5]
19	7112319	Cartoning		

### PART NOTES:

- [1] - APAC EMEA Only  
Only Used with Serial Numbers Beginning with 31
- [2] - Priced per foot. Must order 25 feet.

# iT0620 Indigo NXT

## iT0620 - Panels

#	PART #	DESCRIPTION	QTY	Note
[3]	-	APAC and EMEA Only Only Used with Serial Numbers Beginning with 31		
[4]	-	Top or Bottom		
[5]	-	Top air discharge kits are used when there is not sufficient clearance on the sides of an air-cooled machine. The kit will change the side panels and top panel so the air intake is from the back of the machine and the exhaust is re-routed out of the top of the machine rather than the sides.		
Includes Louvered Top Cover, Solid LH Panel, Solid RH Panel and Screws.				