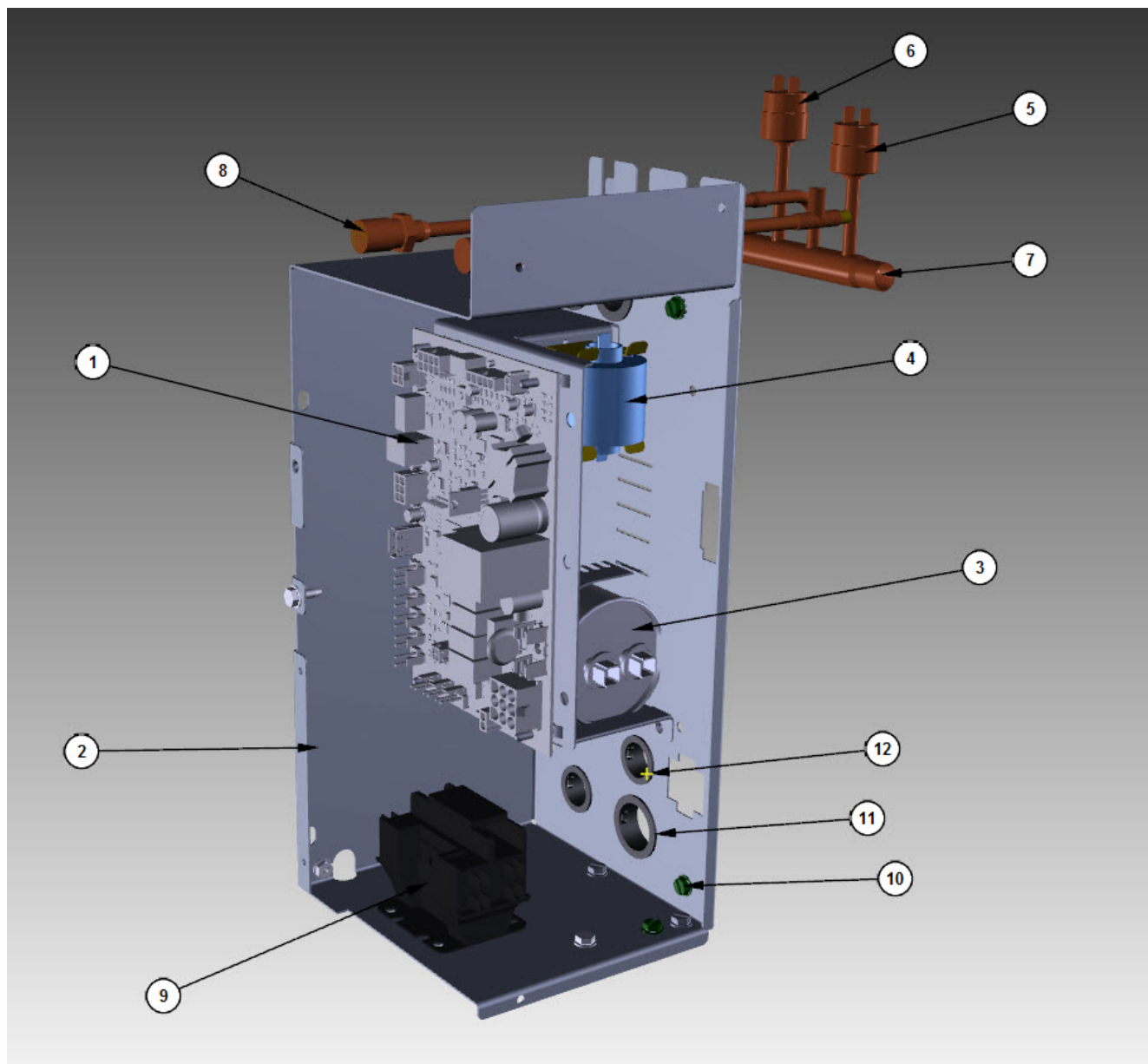


iT0300 Indigo NXT

iT0300 - Control Box



iT0300 Indigo NXT

iT0300 - Control Box

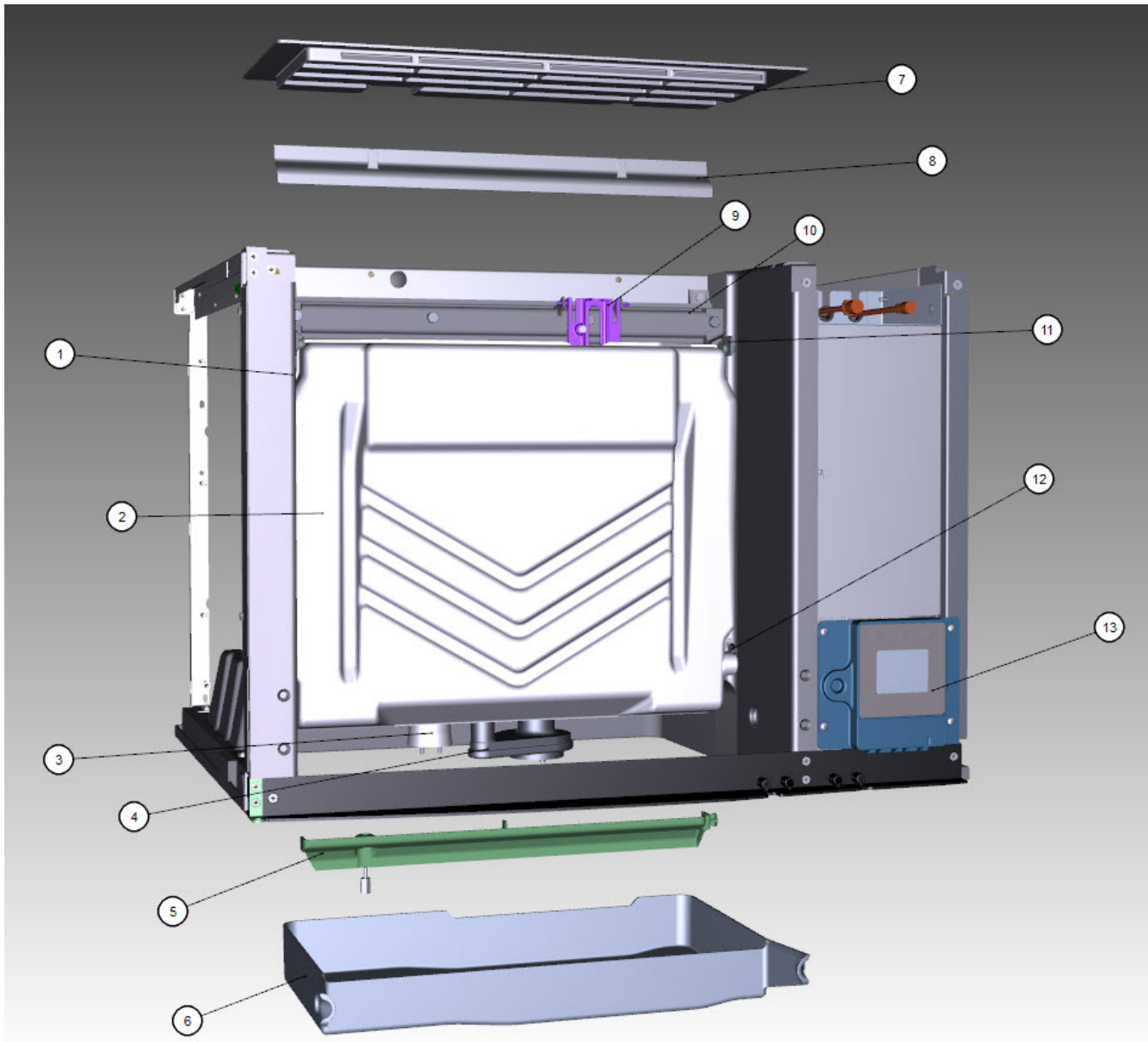
#	PART #	DESCRIPTION	QTY	Note
1	000015208	Control Board		
1a	000015009	Ceramic Fuse - 6.3A		
2	000013818	Control Box		
2a	000010897	Control Box Cover - Upper		
2b	000014353	Control Box Cover - Lower		
2c	000007564	Control Board Mounting Bracket		
2d	4302253	Control Board Mounting Supports		
3		Compressor Run Capacitor		
3a	000000028	Run Capacitor - 115-230V/50-60 Hz/1 Ph		
3b	000010714	Run Capacitor - 230V/60 Hz/1 Ph		
3c	000010715	Run Capacitor - 230V/50-60 Hz/1 Ph		[1]
3d	000010711	Bracket - Run Capacitor		
4	000014323	PTCR - 12A		
4a	8505013	PTCR Mounting Bracket		
5	000013531	Fan Cycling Control - 335-275 psig		
6	000013576	High Pressure Cut-out 450-600 psig		
7	000008364	Manifold Strainer		
7a	6058571	Bracket - Access Valves/Manifold Strainer		
7b	000010699	Grommet - Manifold Strainer		
8	8373263	Access Valve - 7.25" L		
8a	7626843	Valve Cores		
9	2006589	Contactactor - 115V/60 Hz/1 Ph		
9a	2006599	Contactactor - 230V/50-60 Hz/1 Ph		
10	5202169	Screw - #10-24 x 0.5" Ground		
10a	5573209	Star Washer		
11	2500019	Bushing - 1.187"		
12	2501409	Bushing - 0.875"		
13	5202069	Screw - #10-24 x 0.5" HEX		
13a	5573209	Star Washer		
14		Control Box Wiring Harness		
14a	000007696	Control Box Wiring Harness - 115V/60 Hz/1 Ph		
14b	000007179	Control Box Wiring Harness - 230V/60 Hz/1 Ph		
14c	000007180	Control Box Wiring Harness - 230V/50 Hz/1 Ph		
15	000011182	Wiring Harness - Compressor - Samsung		
16	000007185	Wiring Harness - Compressor Compartment - Air-cooled		
17	000007177	Wiring Harness - Compressor Compartment - Water-cooled		

PART NOTES:

[1] - Used on 50 Hz Models

iT0300 Indigo NXT

iT0300 - Evaporator Compartment



iT0300 - Evaporator Compartment

iT0300 Indigo NXT

iT0300 - Evaporator Compartment

#	PART #	DESCRIPTION	QTY	Note
1		Evaporator Assembly		
1a	7602699	Evaporator - Dice Cube		
1b	7602709	Evaporator - Half Dice Cube		
2	4011149	Water Curtain		
3	000016053	Water Level Probe		[1]
3a	000007724	Wire - Control Box to Water Level Probe		[2]
3b	000007053	Water Level Probe - Holder		
3c	5202099	Screw - #10-24 x 0.5" PHIL		[3]
4		Water Pump - See Note for Usage		
4a	2007679	Water Pump - 115V/60 Hz		[4]
4c	2007659	Water Pump - 230V/60 Hz		[5]
4d	2007669	Water Pump - 230V/50 Hz		[4]
4e	000010244	Water Pump Mount		
5	7602213	Water Diverter - 30" Models		
5a	5305123	Thumbscrew SS - #8-32 x 0.44"		
6	000010828	Water Trough - 30"		
7	000009055	Foodzone Seal Panel - 30"		[6]
8	4008469	Evaporator Top Filler Panel		[7]
8a	6063339	Bracket - Top Filler Panel		
8b	5202099	Screw - #10-24 x 0.5" PHIL		
9	000015292	Ice Thickness Control Probe		[8]
10	7602193	Water Distribution Tube - 30"		
10a	5004649	O-Rings - 0.675"		[9]
11	7602203	Evaporator Top Frame Assembly - 30"		[10]
11a	4009613	Evaporator Bottom Frame Assembly		
11b	5429139	Hex Nut - #8-32 Brass		
12	000007888	Magnetic Bin Switch		
12a	000014038	Bin Switch Wiring Harness		
13	000015154	Touch Screen Housing Assembly - 30"/48"		
13a	000006697	Mounting Bracket		[11]
14	5004799	Thumbscrew SS - #8-32 x 0.375"		[12]
14a	5004629	O-Ring - 0.125" ID		
15	5004619	Screw - #12-16 x 0.687"		
16	5004659	Water Pump Base O-Ring - 4.00" ID		
17	5004679	Water Pump Outlet O-Ring - 0.875" ID		

PART NOTES:

- [1] - Includes probe and wire.
- [2] - No Longer Available - must order Water Level Probe for new wire
- [3] - Mount Water Level Probe Holder
- [4] - Includes O-Rings
- [5] - Includes O-Rings.
- [6] - Snaps into Place
- [7] - Includes Cover and Instructions
- [8] - Includes ice thickness probe, clip and washer.
- [9] - Back of Distribution Assembly
- [10] - Includes top frame disks and hex nuts.

iT0300 - Evaporator Compartment

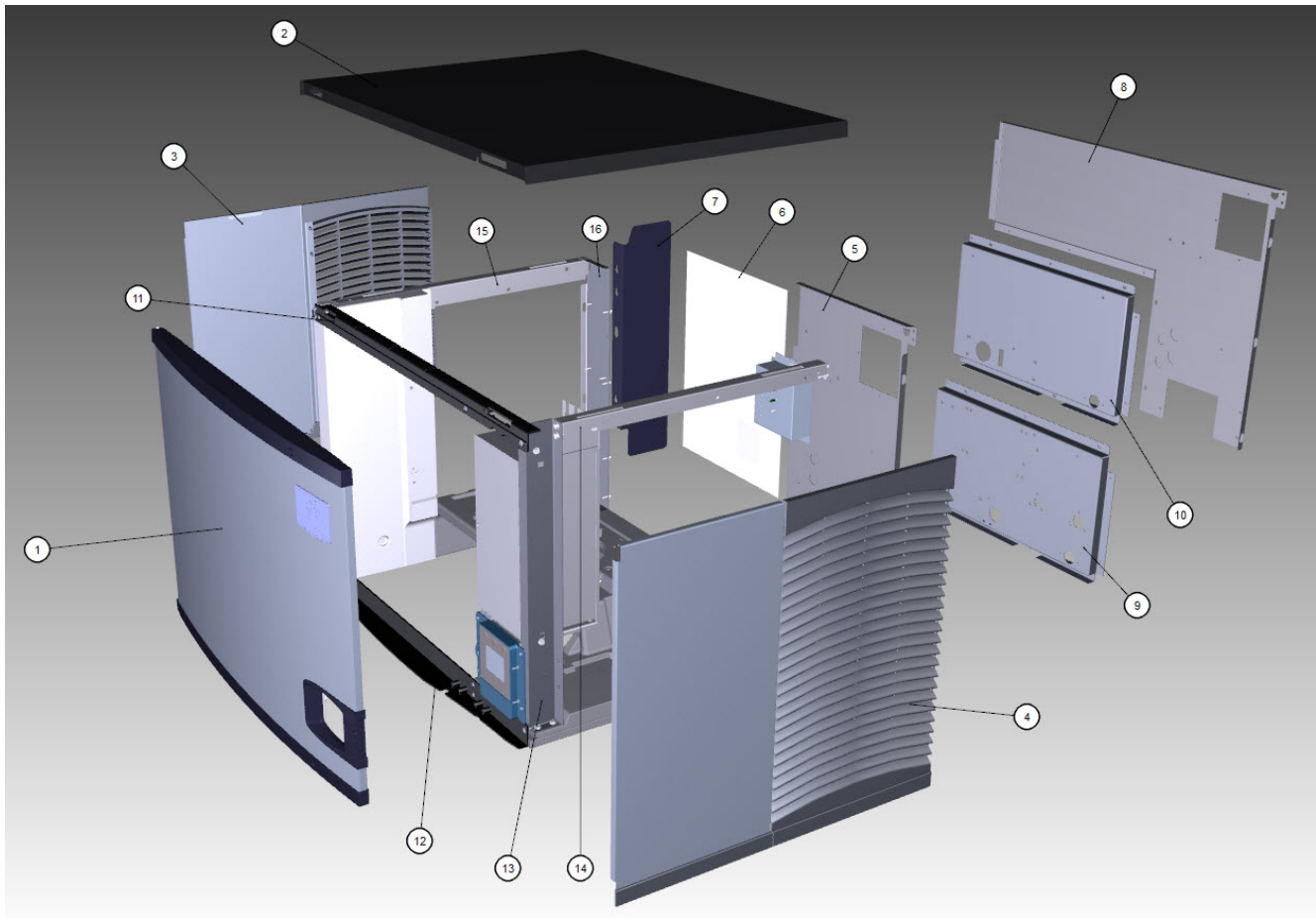
iT0300 Indigo NXT

iT0300 - Evaporator Compartment

#	PART #	DESCRIPTION	QTY	Note
[11]	-	Mounts Housing Assembly to Machine		
[12]	-	Water Distribution Tube Mounting		

iT0300 Indigo NXT

iT0300 - Panels



iT0300 Indigo NXT

iT0300 - Panels

#	PART #	DESCRIPTION	QTY	Note
1	000015666	Front Panel Assembly - 30" x 16.5"		
1a	040008046	Front Panel Assembly - 30" x 16.5" - SS		[1]
1b	5004899	Front Panel Screw		
1c	000006538	Front Panel Top Endcap - Hinged		
1d	040007383	Front Panel Top Endcap		[2]
1e	000006539	Front Panel Bottom Endcap - Hinged		
1f	040007387	Front Panel Bottom Endcap		[2]
1g	000009024	Foam Tape - 0.375" x 0.375" x 12.0"		[3]
2	000006699	Top Cover		
3	000012614	Left Side Panel - 16.5" H		
3a	040004819	Left Side Panel - 16.5" H - SS		[4]
4	000012613	Right Side Panel - 16.5" H		
4a	040004820	Right Side Panel - 16.5" H - SS		[4]
5	3005699	Air Filter - 14.0" x 12.78"		
6	000016026	Back Panel - Air-cooled Models		
7	000007676	Air Baffle Assembly		
8	000016027	Back Panel - Water-cooled Models		
9	6061739	Back Coupling Panel - Water-cooled and Remote Air-cooled		
10	000008482	Panel - Water Regulating Valve - High Pressure		
11	000010051	Front Top Support		
11a	5005379	Mounting Screw - #8-32 x 1.0" PHIL		
11b	5005099	Screw - #10-16 x 0.625"		
12	7602263	Bottom Door Frame		
12a	5005379	Mounting Screw - #8-32 x 1.0" PHIL		
12b	5202099	Screw - #10-24 x 0.5" PHIL		
12c	000001127	Tapping Plate - Panel Hinge Screws		
13	000010677	Right Corner Post		
14	000011032	Right Top Channel		
15	6068649	Left Top Channel		
16	000010354	Left Corner Post		
17	3005579	Left Panel Pivot Leaf Hinge		
18		Electrical Box on Rear of Ice Machine		
18a	6067289	Rear Connection Box		
18b	6067299	Cover - Rear Connection Box		
18c	5202169	Screw - #10-24 x 0.5" Ground		
19	7112299	Cartoning		
20	000006564	LCD Frame without Key Guard		
21	000012003	Bulkhead Gasket		

PART NOTES:

- [1] - APAC EMEA Only
Only Used with Serial Numbers Beginning with 31
- [2] - APAC and EMEA Only
- APAC EMEA Only
Only Used with Serial Numbers Beginning with 31

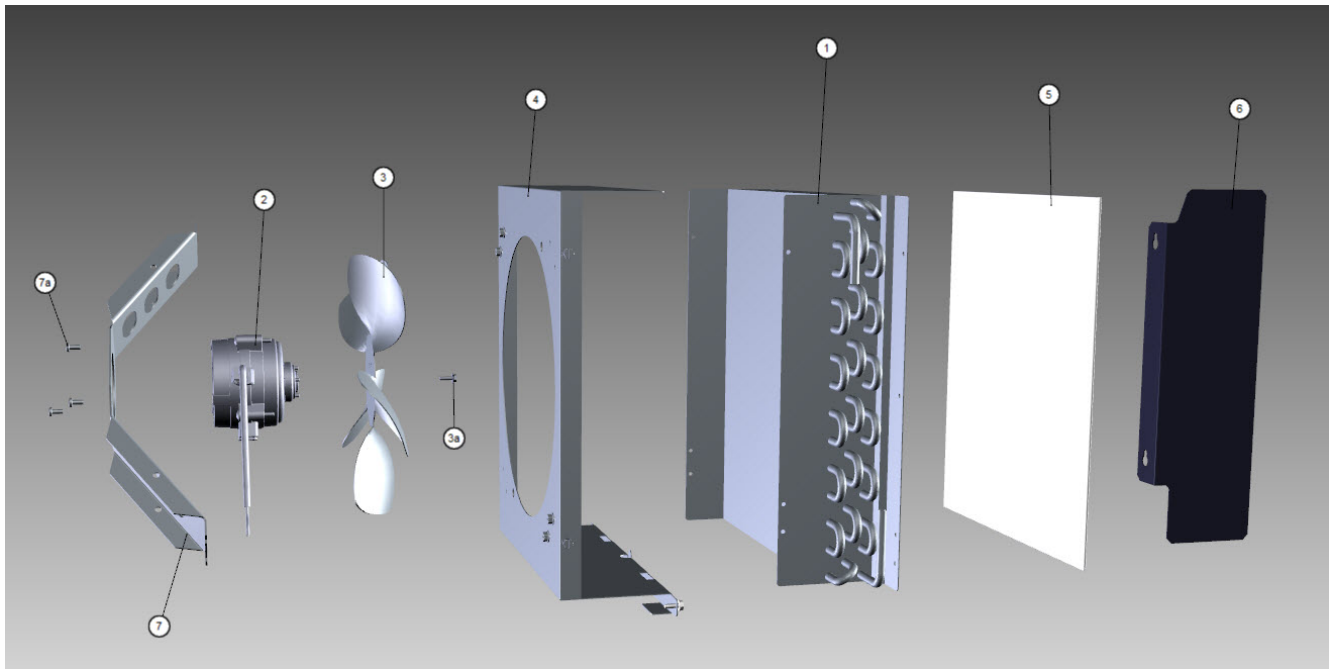
iT0300 Indigo NXT

iT0300 - Panels

#	PART #	DESCRIPTION	QTY	Note
[3]	-	Priced per foot. Must order 25 feet.		
[4]	-	APAC EMEA Only		
		Only Used with Serial Numbers Beginning with 31		
		APAC and EMEA Only		

iT0300 Indigo NXT

iT0300 - Refrigeration Compartment – Air-cooled Components



iT0300 Indigo NXT

iT0300 - Refrigeration Compartment – Air-cooled Components

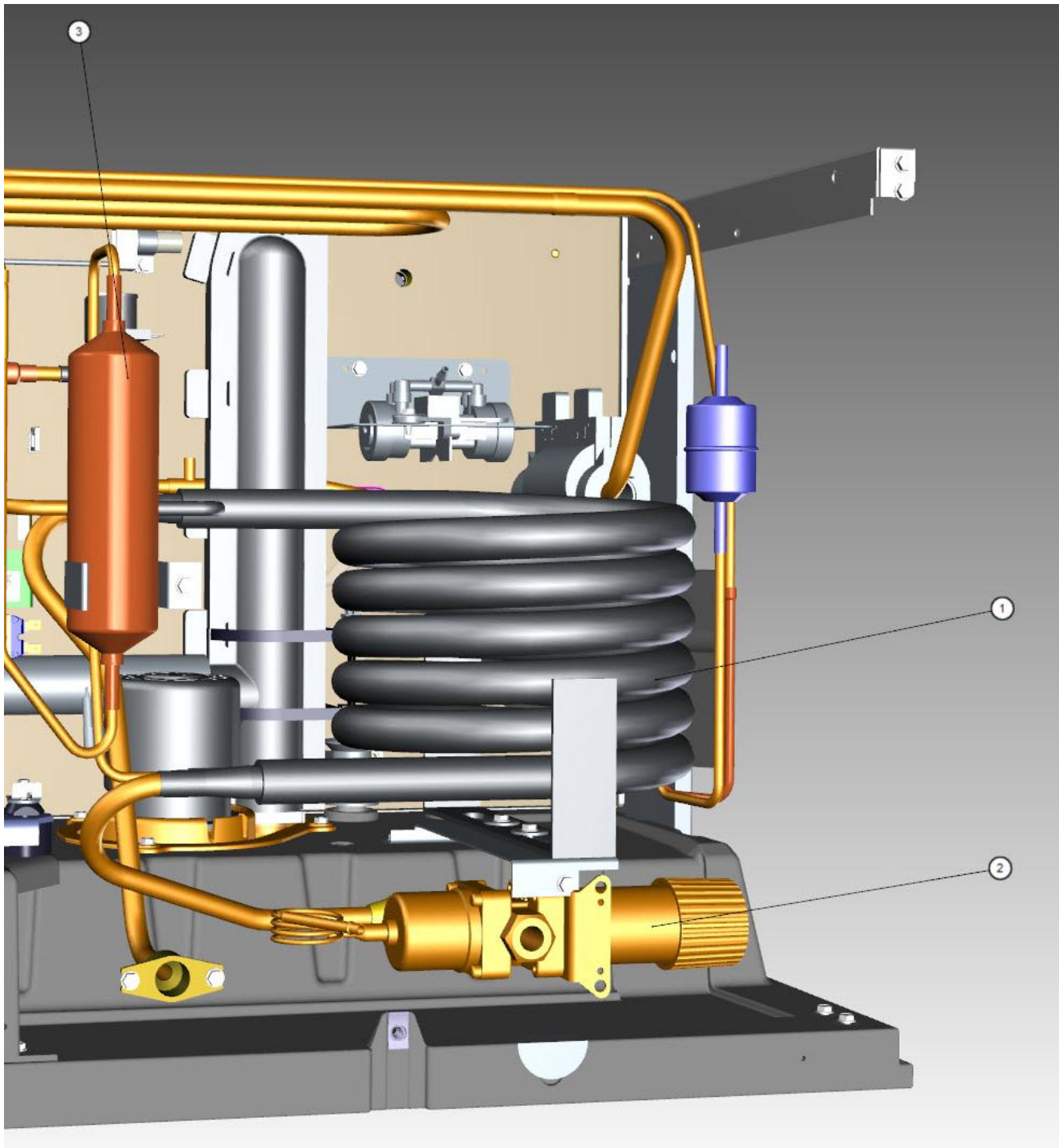
#	PART #	DESCRIPTION	QTY	Note
1a	000010602	Air Condenser		[1]
1b	8851303	Air Condenser		[2]
2a	2412813	Fan Motor - 115V/60 Hz		
2b	2412823	Fan Motor - 208-230V/50-60 Hz		[3]
2c	000015389	Fan Motor - 230V/50-60 Hz/1 Ph		[4]
3	2416223	Fan Blade		
3a				
4	6058399	Fan Shroud		
4a	5202069	Screw - #10-24 x 0.5" HEX		
5	3005699	Air Filter - 14.0" x 12.78"		
6	000007676	Air Baffle Assembly		
7	000010922	Fan Motor Bracket		
7a	5026729	Mounting Screw - #8-32 x 0.25"		
8	5033589	Screw - Fan Bracket to Fan Shroud		

PART NOTES:

- [1] - Used on 60 Hz Models
- [2] - Used on 50 Hz Models
- [3] - 230V/60 Hz
- [4] - Includes motor fan and screws.
230V/50 Hz

iT0300 Indigo NXT

iT0300 - Refrigeration Compartment – Water-cooled Components



iT0300 - Refrigeration Compartment – Water-cooled Components

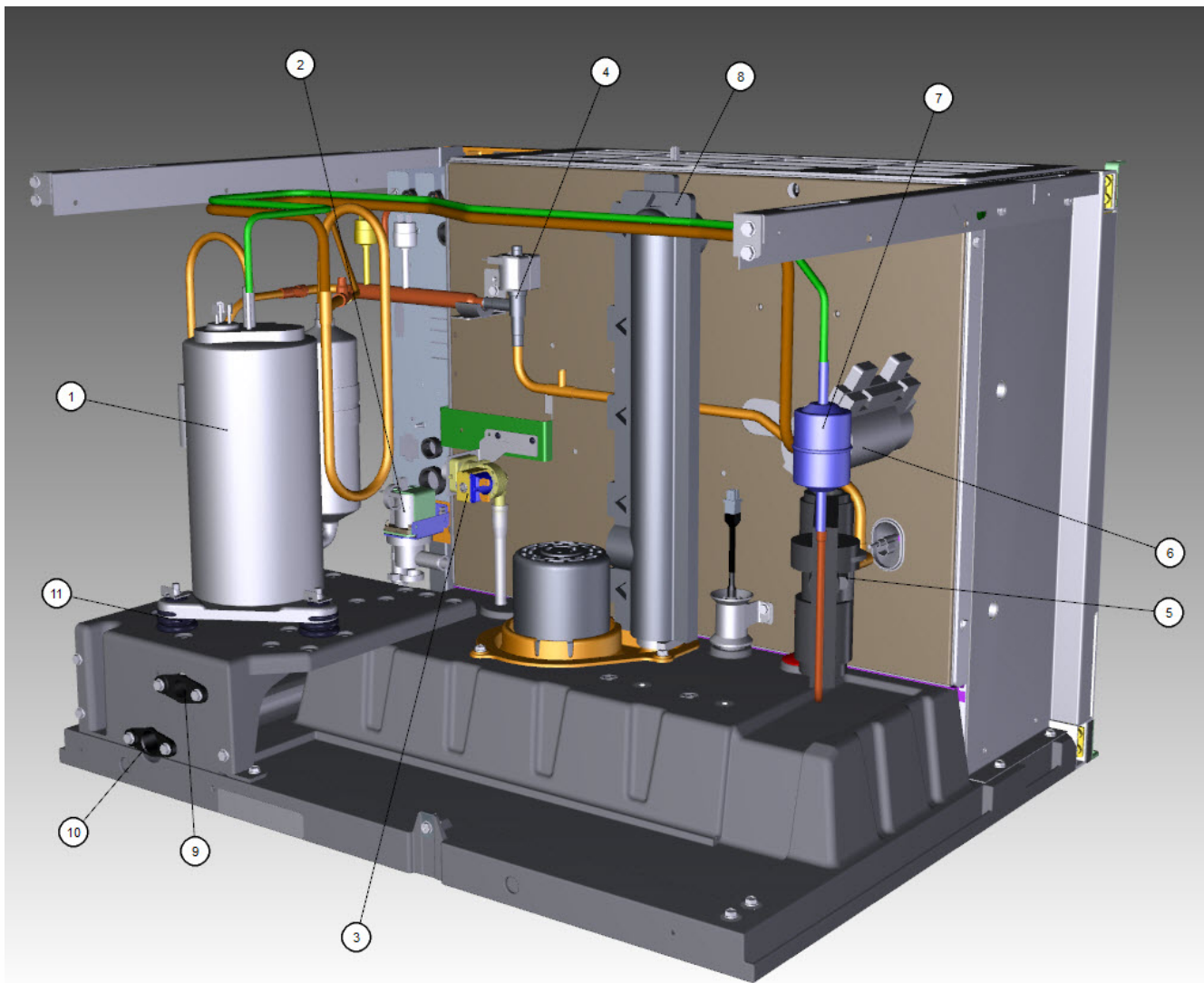
iT0300 Indigo NXT

iT0300 - Refrigeration Compartment – Water-cooled Components

#	PART #	DESCRIPTION	QTY	Note
1	000000045	Water-cooled Condenser		
2	000013475	Water Regulating Valve - 0.375"		
3	000008892	Receiver		
4	5003883	Flare Nut - 0.5"		
4a	8332033	Water Coupling		
5	6061739	Back Coupling Panel - Water-cooled and Remote Air-cooled		
6	6000541	Receiver Strap		
7	5002249	Elbow - 0.5" MF x 0.375" MPT		
8	5202069	Screw - #10-24 x 0.5" HEX		
9	5573419	Washer		
10	6058659	Mounting Base - Water Condenser or Receiver SS		
11	8706083	Female Wing Adapter - Brass - 0.5"		

iT0300 Indigo NXT

iT0300 - Refrigeration Compartment - Common Components



iT0300 - Refrigeration Compartment - Common Components

iT0300 Indigo NXT

iT0300 - Refrigeration Compartment - Common Components

#	PART #	DESCRIPTION	QTY	Note
1		Compressor		
1a	000010460	Compressor - Samsung - 115V/60 Hz/1 Ph		[1]
1ab	000017368	Compressor - Samsung - 115V/60 Hz/1 Ph		[2]
1b	000010459	Compressor - Samsung - 208-230V/60 Hz/1 Ph		
1c	000010461	Compressor - Samsung - 230V/50 Hz/1 Ph		
1d	000017367	Compressor 230V/60Hz/1Ph		
1e	000011182	Wiring Harness - Compressor - Samsung		
2a	000014062	Water Dump Valve - 115V/60 Hz		
2b	000014063	Water Dump Valve - 208-230V/50-60 Hz		
2c	6058459	Mounting Bracket - Water Dump Valve		
3a	000009120	Water Inlet Valve - 115V/60 Hz/1 Ph		[3]
3b	000009126	Water Inlet Valve - 208-230V/50-60 Hz		[3]
4		Harvest Valve		
4a	000015045	Solenoid Valve 0.375" x 0.375" Including 115V/60 Hz Electrical Coil		[4]
4b	000005156	Solenoid Valve Coil Only - 115V/60 Hz		
4c	000015044	Solenoid Valve 0.375" x 0.375" Including 208-230V/50-60 Hz Electrical Coil		[4]
4d	000005157	Solenoid Valve Coil Only - 230V/50-60 Hz		
5	000016239	Expansion Valve		[5]
5a	000016240	Expansion Valve		[6]
5b	000012443	Valve Insulation Boot - Body - Danfoss		
6	000002719	Valve Insulation Boot - Bulb - Danfoss		
6a	5650529	Clamp - Expansion Valve Bulb		
6b	3000503	Strap - Expansion Valve Bulb - 0.5"		
7	000015361	Drier with Access Port - 0.25"		
8	000015400	Insulated Tube		[7]
8a	5650609	Snap Clamp - 1.0" ID		
8b	5650709	Snap Clamp - 0.8" x 0.9" ID		
9	8706093	Female Wing Adapter - Brass - 0.375"		[8]
10	000005423	Female Wing Adapter - 0.5"		
10a	1360961	Male Connector - 0.375"		
11		Compressor Mounting		
11a	000015135	Compressor Base		
11b	8503069	Mounting - Rubber Grommet		
11c	8503949	Mounting - Sleeve		
11d	5004819	Compressor Mounting - Bolt		
11e	5004829	Compressor Mounting - Nut		
12	4420383	Clear Tubing - 0.625" ID		
13	4420291	Tygon Tube - 0.25" OD		
14	4010439	Tubing - Water Inlet Valve		
15	000001382	Vinyl Tubing 0.625" ID		[9]
15a	6038831	Insulation - 0.88" ID x 0.25" W x 13.5" L		
15b	5650709	Snap Clamp - 0.8" x 0.9" ID		
16	000015573	Thermistor with Spring Clips		
17	K00454	LuminIce II - Bulb		
17a	000014037	Wiring Harness - LuminIce II		

iT0300 - Refrigeration Compartment - Common Components

iT0300 Indigo NXT

iT0300 - Refrigeration Compartment - Common Components

#	PART #	DESCRIPTION	QTY	Note
18a	000007222	Air Assist - 115V		
18b	000007223	Air Assist - 230V		
18c	4011739	Air Manifold		[10]
18d	000014419	Air Assist Bracket		
18e	3001453	Air Assist - Nozzle		[11]
18f	4420883	Vinyl Tubing - 0.25" ID		
18g	9002593	Tubing, Clear PVC – 0.125" ID x 0.25" OD		
19	5202069	Screw - #10-24 x 0.5" HEX		
20	000012000	Accumulator		
20a	000016196	Bracket - Accumulator		
21	000011604	Plug - Float Hole		

PART NOTES:

- [1] - Before Serial Number 1120965154
- [2] - After Serial Number 1120965154
- [3] - 0.5 gpm

Includes water valve inlet, bracket, screws, adapter and locking clip.
- [4] - With Screen
- [5] - Used on 60 Hz Models
- [6] - Used on 50 Hz Models
- [7] - vinyl tubing from distribution tube to water pump & dump valve
- [8] - Brass

If replacing a nylon fitting you must order 1360961
- [9] - dump valve to drain adapter
- [10] - Air Pump Tubing Outlet
- [11] - Nonreplacable - Soldered in place