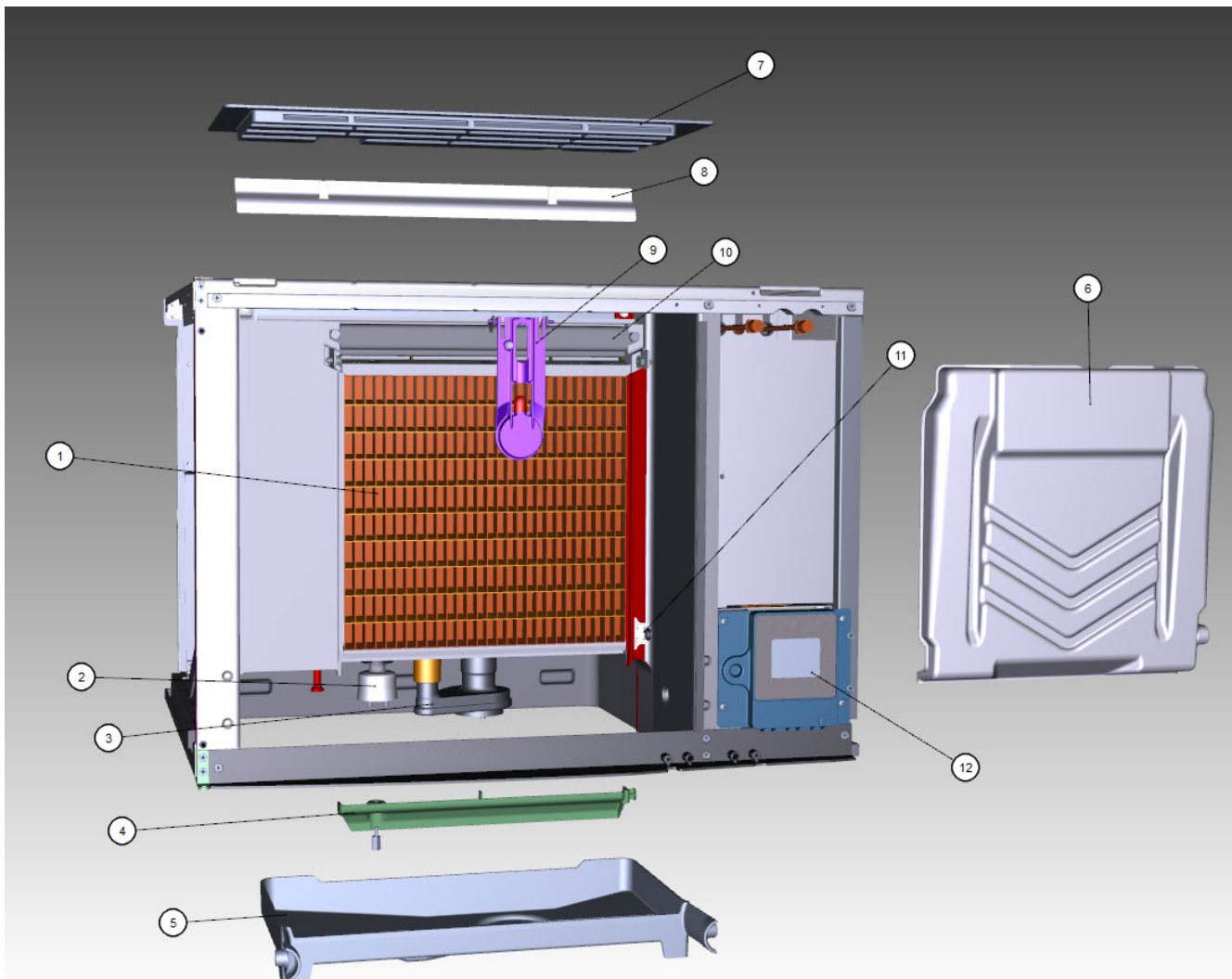


iT0450 Indigo NXT

iT0450 - Evaporator Compartment



iT0450 - Evaporator Compartment

iT0450 Indigo NXT

iT0450 - Evaporator Compartment

#	PART #	DESCRIPTION	QTY	Note
1		Evaporator Assembly		
1a	7602879	Evaporator - Dice Cube		
1b	7602889	Evaporator - Half Dice Cube		
2	000016053	Water Level Probe		[1]
2a	000007724	Wire - Control Box to Water Level Probe		[2]
2b	000007053	Water Level Probe - Holder		
2c	5202099	Screw - #10-24 x 0.5" PHIL		[3]
3		Water Pump		
3a	2008929-ORA	Water Pump - 115V/60 Hz		
3b	2008939	Water Pump - 230V/60 Hz		[4]
3c	2008949	Water Pump - 230V/50 Hz		[4]
3d	000010244	Water Pump Mount		
3e	5004659	Water Pump Base O-Ring - 4.00" ID		
3f	5004679	Water Pump Outlet O-Ring - 0.875" ID		
4	7602779	Water Diverter - 22" Models		
4a	5305123	Thumbscrew SS - #8-32 x 0.44"		
5	000010828	Water Trough - 30"		
6	4011189	Water Curtain		
7	000010322	Foodzone Seal Panel - 30"		[5]
8	4008469	Evaporator Top Filler Panel		[6]
8a	6063339	Bracket - Top Filler Panel		
8b	5202099	Screw - #10-24 x 0.5" PHIL		
9	000015292	Ice Thickness Control Probe		[7]
10	7602789	Water Distribution Tube - 22"		
10a	5004649	O-Rings - 0.675"		[8]
10b	5004799	Thumbscrew SS - #8-32 x 0.375"		[9]
11	000007888	Magnetic Bin Switch		
11a	000014038	Bin Switch Wiring Harness		
12	000015154	Touch Screen Housing Assembly - 30"/48"		
12a	000006697	Mounting Bracket		[10]
13	5004619	Screw - #12-16 x 0.687"		
14	7602799	Evaporator Top Frame Assembly - 22"		[11]
15	4010463	Evaporator Bottom Frame Assembly		
15a	5429139	Hex Nut - #8-32 Brass		

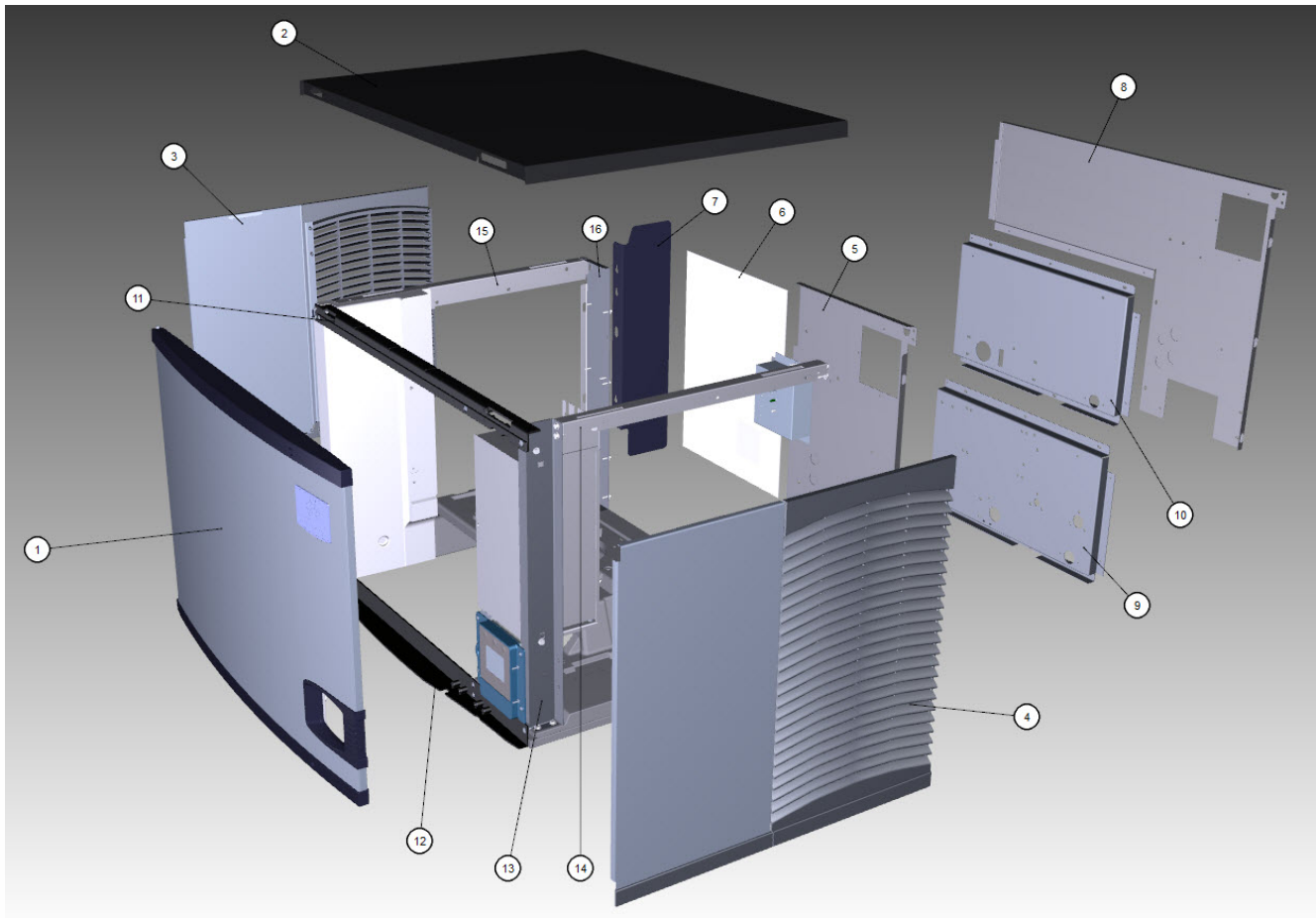
PART NOTES:

- [1] - Includes probe and wire.
- [2] - No Longer Available - must order Water Level Probe for new wire
- [3] - Mount Water Level Probe Holder
- [4] - Includes O-Rings
- [5] - Tape into Place
- [6] - Includes Cover and Instructions
- [7] - Includes ice thickness probe, clip and washer.
- [8] - Back of Distribution Assembly
- [9] - Water Distribution Tube Mounting
- [10] - Mounts Housing Assembly to Machine
- [11] - Includes top frame disks and hex nuts.

iT0450 - Evaporator Compartment

iT0450 Indigo NXT

iT0450 - Panels



iT0450 Indigo NXT

iT0450 - Panels

#	PART #	DESCRIPTION	QTY	Note
1	000015667	Front Panel Assembly - 30" x 21.5"		
1a	040008047	Front Panel Assembly - 30" x 21.5" - SS		[1]
1b	000006538	Front Panel Top Endcap - Hinged		
1c	040007386	Front Panel Top Endcap		[2]
1d	000006539	Front Panel Bottom Endcap - Hinged		
1e	040007387	Front Panel Bottom Endcap		[2]
1f	5004899	Front Panel Screw		
1g	000009024	Foam Tape - 0.375" x 0.375" x 12.0"		[3]
2	000006699	Top Cover		
3	000012616	Left Side Panel - 21.5" H		
3a	040005623	Left Side Panel - 21.5" H - SS		[1]
4	000012615	Right Side Panel - 21.5" H		
4a	040005622	Right Side Panel - 21.5" H - SS		[1]
5	000011084	Back Panel - Air-cooled		
6	3005939	Air Filter - 16.8" x 12.81"		
7	000007314	Air Baffle Assembly		
8	000011092	Back Panel - Water-cooled and Remote Air-cooled		
9	000014482	Back Coupling Panel - Water-cooled and Remote Air-cooled		
10	000008482	Panel - Water Regulating Valve - High Pressure		
11	000010051	Front Top Support		
11a	5005379	Mounting Screw - #8-32 x 1.0" PHIL		
11b	5005099	Screw - #10-16 x 0.625"		
12	7602263	Bottom Door Frame		
12a	5005379	Mounting Screw - #8-32 x 1.0" PHIL		
12b	5202099	Screw - #10-24 x 0.5" PHIL		
13	000010680	Right Corner Post		
14	000011032	Right Top Channel		
15	6068649	Left Top Channel		
16	000010299	Left Corner Post		
17		Electrical Box on Rear of Ice Machine		
17a	6067289	Rear Connection Box		
17b	6067299	Cover - Rear Connection Box		
17c	2006143	Terminal Block - 50 Hz - 3 Pole		
17d	5202169	Screw - #10-24 x 0.5" Ground		
18	3005579	Left Panel Pivot Leaf Hinge		
18a	5005379	Mounting Screw - #8-32 x 1.0" PHIL		
18b	000001127	Tapping Plate - Panel Hinge Screws		
19	K00379	Top Air Discharge Kit Option		[4]
20	7112239	Cartoning		
21	000006564	LCD Frame without Key Guard		
22	000012003	Bulkhead Gasket		

PART NOTES:

- [1] - APAC and EMEA Only
Only Used with Serial Numbers Beginning with 31

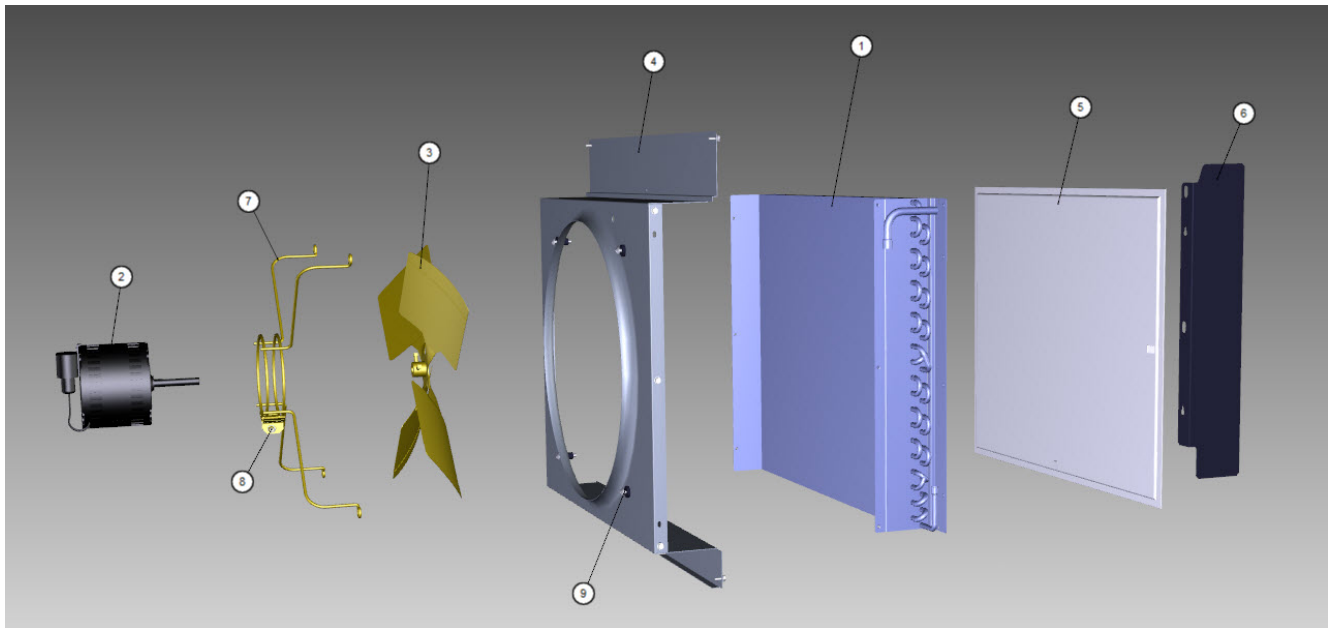
iT0450 Indigo NXT

iT0450 - Panels

#	PART #	DESCRIPTION	QTY	Note
[2]	-	APAC EMEA Only		
		Only Used with Serial Numbers Beginning with 31		
[3]	-	Priced per foot. Must order 25 feet.		
[4]	-	Top air discharge kits are used when there is not sufficient clearance on the sides of an air-cooled machine. The kit will change the side panels and top panel so the air intake is from the back of the machine and the exhaust is re-routed out of the top of the machine rather than the sides.		
Includes Louvered Top Cover, Solid LH Panel, Solid RH Panel and Screws.				

iT0450 Indigo NXT

iT0450 - Refrigeration Compartment – Air-cooled Components



iT0450 Indigo NXT

iT0450 - Refrigeration Compartment – Air-cooled Components

#	PART #	DESCRIPTION	QTY	Note
1	000008832	Air Condenser		
2a	2412929	Fan Motor - 115V/60 Hz/1 Ph		[1]
2b	2412939	Fan Motor - 208-230V/50-60 Hz		[2]
3	2416203	Fan Blade		
4	000014015	Fan Shroud		
5	3005939	Air Filter - 16.8" x 12.81"		
6	000007314	Air Baffle Assembly		
7	000014018	Fan Motor Bracket		
8		Fan Motor Mounting		
8a	5033589	Screw		
8b	5545109	Mounting - Lock Washer		
8c	5429529	Mounting - Hexnut		
9		Fan Bracket Mounting		
9a	5033589	Screw		
9b	5545109	Mounting - Lock Washer		
9c	5573059	Flat Washer		
9d	5429559	Rubber Wellnut		
10	5202069	Screw - #10-24 x 0.5" HEX		

PART NOTES:

- [1] - Includes Nuts
- [2] - Includes Nuts.

iT0450 Indigo NXT

iT0450 - Refrigeration Compartment – Water-cooled Components



iT0450 - Refrigeration Compartment – Water-cooled Components

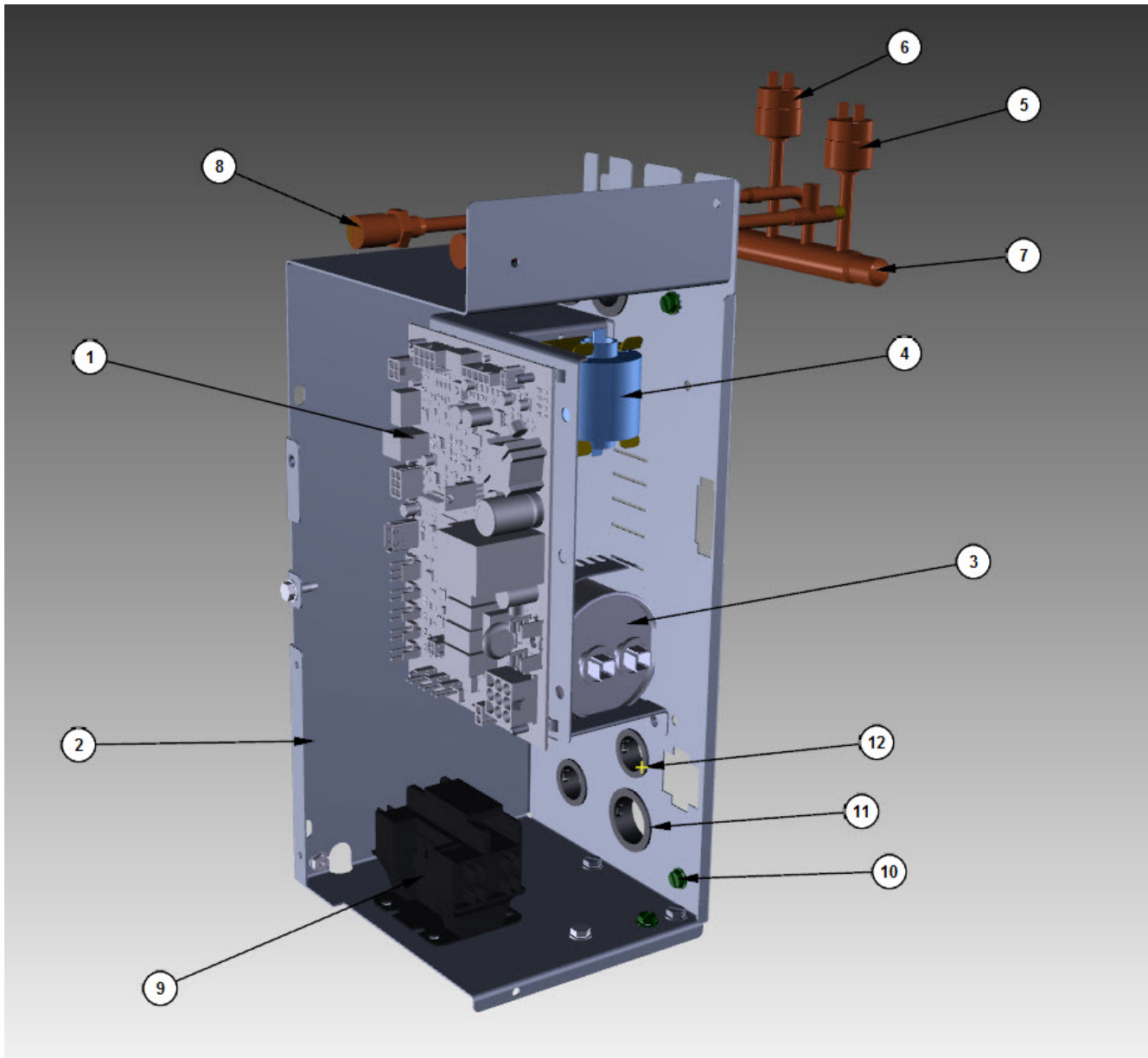
iT0450 Indigo NXT

iT0450 - Refrigeration Compartment – Water-cooled Components

#	PART #	DESCRIPTION	QTY	Note
1	000000045	Water-cooled Condenser		
2	000013475	Water Regulating Valve - 0.375"		
3	000008892	Receiver		
4	5003883	Flare Nut - 0.5"		
4a	8332033	Water Coupling		
5	000014482	Back Coupling Panel - Water-cooled and Remote Air-cooled		
6	6000541	Receiver Strap		
7	5002249	Elbow - 0.5" MF x 0.375" MPT		
8	5202069	Screw - #10-24 x 0.5" HEX		
9	5573419	Washer		
10	000010604	Mounting Base - Water Condenser or Receiver		
11	8706083	Female Wing Adapter - Brass - 0.5"		

iT0450 Indigo NXT

iT0450 - Control Box



iT0450 Indigo NXT

iT0450 - Control Box

#	PART #	DESCRIPTION	QTY	Note
1	000015208	Control Board		
1a	000015009	Ceramic Fuse - 6.3A		
2	000013818	Control Box		
2a	000012138	Control Box Cover		
2b	000007564	Control Board Mounting Bracket		
2c	4302253	Control Board Mounting Supports		
3		Compressor Run Capacitor		
3a	000011640	Run Capacitor - 230V/50-60 Hz/1 Ph		[1]
3b	000010708	Run Capacitor - 115-230V/50-60 Hz/1 Ph		[2]
3c	6021601	Capacitor Mounting Strap		
4	000014323	PTCR - 12A		[3]
4a	8505003	PTCR - 10A		[4]
4b	8505023	PTCR Mounting Bracket		
4c	8505013	PTCR Mounting Bracket		
5	000013576	High Pressure Cut-out 450-600 psig		
6	000013531	Fan Cycling Control - 335-275 psig		
7	000011170	Manifold Strainer		
7a	6058571	Bracket - Access Valves/Manifold Strainer		
7b	000010699	Grommet - Manifold Strainer		
8a	8373263	Access Valve - 7.25" L		
8b	8373253	Access Valve - 6.0" L		
8c	7626843	Valve Cores		
8d	000012264	Refrigeration Service Valve Assembly - 0.3125"		
9		Contactactor		
9a	2006589	Contactactor - 115V/60 Hz/1 Ph		
9b	2009089	Contactactor - 208-230V/50-60 Hz/1 Ph		
9c	2006619	Contactactor - 230V/60 Hz/3 Ph		
10	5202169	Screw - #10-24 x 0.5" Ground		
10a	5573209	Star Washer		
11	2500019	Bushing - 1.187"		
12	2501409	Bushing - 0.875"		
13	5202069	Screw - #10-24 x 0.5" HEX		
13a	5573209	Star Washer		
14		Control Box Wiring Harness		
14a	000007696	Control Box Wiring Harness - 115V/60 Hz/1 Ph		
14b	000007179	Control Box Wiring Harness - 230V/60 Hz/1 Ph		
14c	000007180	Control Box Wiring Harness - 230V/50 Hz/1 Ph		
15	2008263	Wiring Harness - Compressor - 3 Ph		
16		Compressor Compartment Wiring Harness		
16a	000007185	Wiring Harness - Compressor Compartment - Air-cooled		
16b	000007177	Wiring Harness - Compressor Compartment - Water-cooled		
17	000012569	Electronic Noise Filter - Korea		
17a	000005500	Electrical Noise Filter Wiring Harness		
17b	000011505	Terminal Cover		
17c	000011506	Terminal Cover Gasket		

iT0450 - Control Box

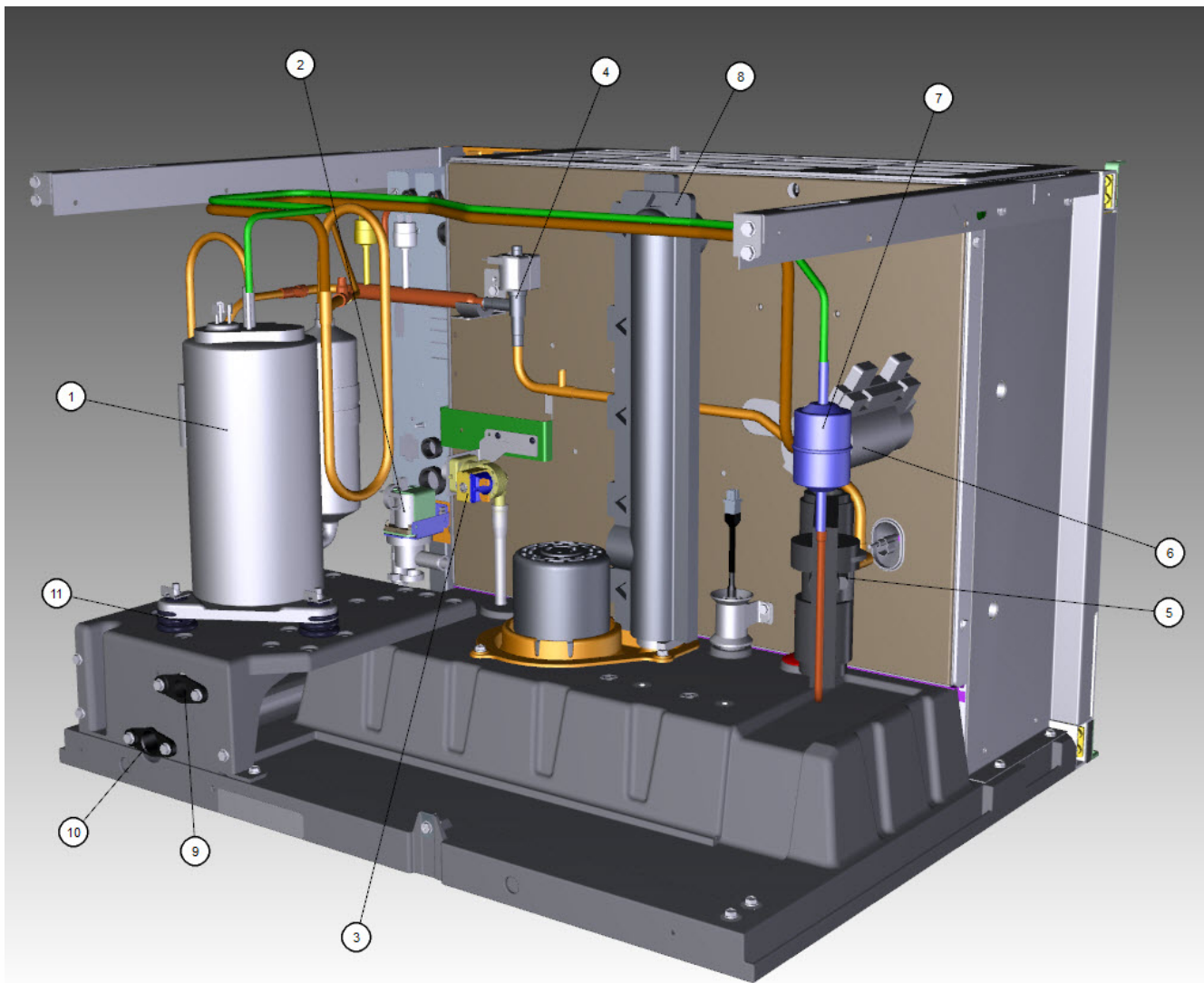
iT0450 Indigo NXT

iT0450 - Control Box

#	PART #	DESCRIPTION	QTY	Note
PART NOTES:				
[1]	-	230V/60 Hz Models		
[2]	-	115V/60 Hz 230V/50 Hz Models		
[3]	-	Air-cooled Water-cooled Models		
[4]	-	Remote Models		

iT0450 Indigo NXT

iT0450 - Refrigeration Compartment - Common Components



iT0450 - Refrigeration Compartment - Common Components

iT0450 Indigo NXT

iT0450 - Refrigeration Compartment - Common Components

#	PART #	DESCRIPTION	QTY	Note
1		Compressor		
1a	000010315	Compressor - Samsung - 115V/60 Hz/1 Ph		
1b	000010316	Compressor - Samsung - 208-230V/60 Hz/1 Ph		
1c	000010464	Compressor - Samsung - 230V/50 Hz/1 Ph		
1d	000011182	Wiring Harness - Compressor - Samsung		
2a	000014062	Water Dump Valve - 115V/60 Hz		
2b	000014063	Water Dump Valve - 208-230V/50-60 Hz		
2c	6058459	Mounting Bracket - Water Dump Valve		
3a	000009123	Water Inlet Valve - 115V/60 Hz/1 Ph		[1]
3b	000009122	Water Inlet Valve - 208-230V/50-60 Hz		[1]
4		Harvest Valve		
4a	000015045	Solenoid Valve 0.375" x 0.375" Including 115V/60 Hz Electrical Coil		[2]
4b	000005156	Solenoid Valve Coil Only - 115V/60 Hz		
4c	000015044	Solenoid Valve 0.375" x 0.375" Including 208-230V/50-60 Hz Electrical Coil		[2]
4d	000005157	Solenoid Valve Coil Only - 230V/50-60 Hz		
5	000015019	Expansion Valve		
5a	000012443	Valve Insulation Boot - Body - Danfoss		
6	000002719	Valve Insulation Boot - Bulb - Danfoss		
6a	5650529	Clamp - Expansion Valve Bulb		
6b	3000503	Strap - Expansion Valve Bulb - 0.5"		
7	000015361	Drier with Access Port - 0.25"		
8	000015402	Insulated Tube		[3]
8a	5650609	Snap Clamp - 1.0" ID		
8b	5650709	Snap Clamp - 0.8" x 0.9" ID		
9	8706093	Female Wing Adapter - Brass - 0.375"		[4]
9a	1360961	Male Connector - 0.375"		
10	000005423	Female Wing Adapter - 0.5"		
11		Compressor Mounting		
11a	000008346	Compressor Base		
11b	8503069	Mounting - Rubber Grommet		
11c	8503949	Mounting - Sleeve		
11d	5004819	Compressor Mounting - Bolt		
11e	5004829	Compressor Mounting - Nut		
12	4420383	Clear Tubing - 0.625" ID		
13	4420291	Tygon Tube - 0.25" OD		
14a	4010439	Tubing - Water Inlet Valve		
15	000001382	Vinyl Tubing 0.625" ID		[5]
15a	6038831	Insulation - 0.88" ID x 0.25" W x 13.5" L		
15b	5650709	Snap Clamp - 0.8" x 0.9" ID		
16	000015573	Thermistor with Spring Clips		
17	K00454	LuminIce II - Bulb		
17a	000014037	Wiring Harness - LuminIce II		
18a	000007222	Air Assist - 115V		
18b	000007223	Air Assist - 230V		
18c	4011739	Air Manifold		[6]

iT0450 - Refrigeration Compartment - Common Components

iT0450 Indigo NXT

iT0450 - Refrigeration Compartment - Common Components

#	PART #	DESCRIPTION	QTY	Note
18d	000014419	Air Assist Bracket		
18e	3001453	Air Assist - Nozzle		[7]
18f	4420883	Vinyl Tubing - 0.25" ID		
18g	9002593	Tubing, Clear PVC – 0.125" ID x 0.25" OD		
19	5202069	Screw - #10-24 x 0.5" HEX		
20	000011604	Plug - Float Hole		
21	000010320	Terminal Cover		
22	000014574	Insulation Tube 0.375" ID X .38" W X 2.75" LG		

PART NOTES:

- [1] - 0.78 gpm
Includes water valve inlet, bracket, screws, adapter, 0.375-18 NPT brass connector and locking clip.
- [2] - With Screen
- [3] - vinyl tubing from distribution tube to water pump & dump valve
- [4] - Brass
If replacing a nylon fitting you must order 1360961
- [5] - dump valve to drain adapter
- [6] - Air Pump Tubing Outlet
- [7] - Nonreplacable - Soldered in place