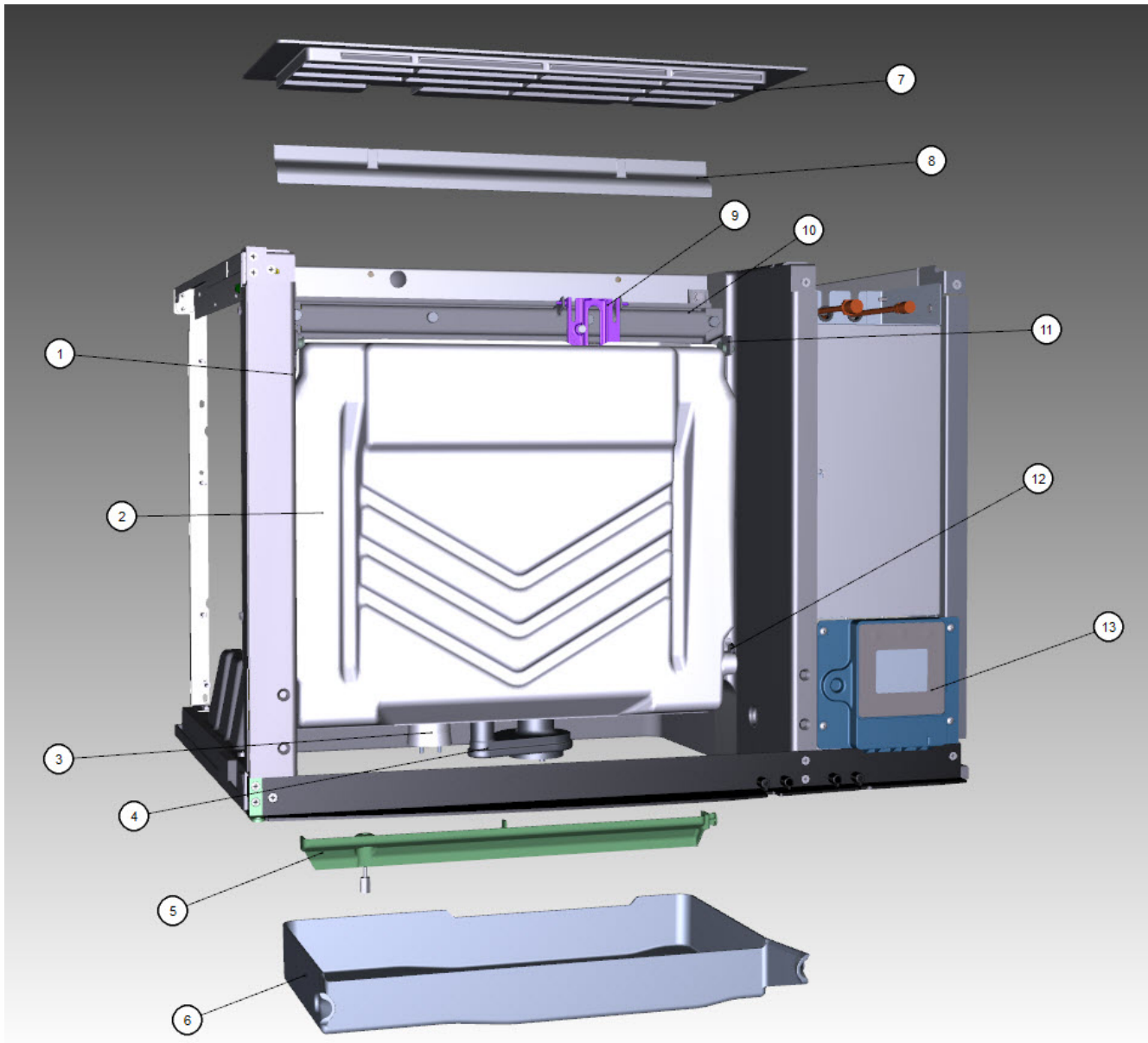


iT0500, iP0500 Indigo NXT, JCT0500

iT0500, iP0500 - Evaporator Compartment



iT0500, iP0500 - Evaporator Compartment

iT0500, iP0500 Indigo NXT, JCT0500

iT0500, iP0500 - Evaporator Compartment

#	PART #	DESCRIPTION	QTY	Note
1		Evaporator Assembly		
1a	7602839	Evaporator - Dice Cube		
1b	7602849	Evaporator - Half Dice Cube		
1c	7602859	Evaporator - Regular Cube		
2	4010979	Water Curtain		
3	000016053	Water Level Probe		[1]
3a	000007724	Wire - Control Box to Water Level Probe		[2]
3b	000007053	Water Level Probe - Holder		
3c	5202099	Screw - #10-24 x 0.5" PHIL		[3]
4		Water Pump - See Note for Usage		
4a	8251129	Water Pump - 115V/60 Hz		[4]
4b	2008109	Water Pump - 230V/60 Hz		[5]
4c	2008119	Water Pump - 230V/50-60 Hz		[6]
4d	8252109	Water Pump - 230V/50-60 Hz		[7]
4e	000010244	Water Pump Mount		
5	7602213	Water Diverter - 30" Models		
5a	5305123	Thumbscrew SS - #8-32 x 0.44"		
6		Water Trough - See Serial Break for Usage		
6a	000010337	Water Trough - 30"		[8]
6b	000010828	Water Trough - 30"		[9]
7	000010322	Foodzone Seal Panel - 30"		[10]
8	4008469	Evaporator Top Filler Panel		[11]
8a	6063339	Bracket - Top Filler Panel		
8b	5202099	Screw - #10-24 x 0.5" PHIL		
9	000015292	Ice Thickness Control Probe		[12]
10	7602193	Water Distribution Tube - 30"		
10a	5004649	O-Rings - 0.675"		[13]
11	7602203	Evaporator Top Frame Assembly - 30"		[14]
11a	4009613	Evaporator Bottom Frame Assembly		
11b	5429139	Hex Nut - #8-32 Brass		
12	000007888	Magnetic Bin Switch		
12a	000014038	Bin Switch Wiring Harness		
13	000015154	Touch Screen Housing Assembly - 30"/48"		
13a	000006697	Mounting Bracket		[15]
14	5004799	Thumbscrew SS - #8-32 x 0.375"		[16]
14a	5004629	O-Ring - 0.125" ID		
15	5004619	Screw - #12-16 x 0.687"		
16	5004659	Water Pump Base O-Ring - 4.00" ID		
17	5004679	Water Pump Outlet O-Ring - 0.875" ID		

PART NOTES:

- [1] - Includes probe and wire.
- [2] - No Longer Available - must order Water Level Probe for new wire
- [3] - Mount Water Level Probe Holder
- [4] - Includes o-rings.
- [5] - Includes O-Rings
60 Hz

iT0500, iP0500 - Evaporator Compartment

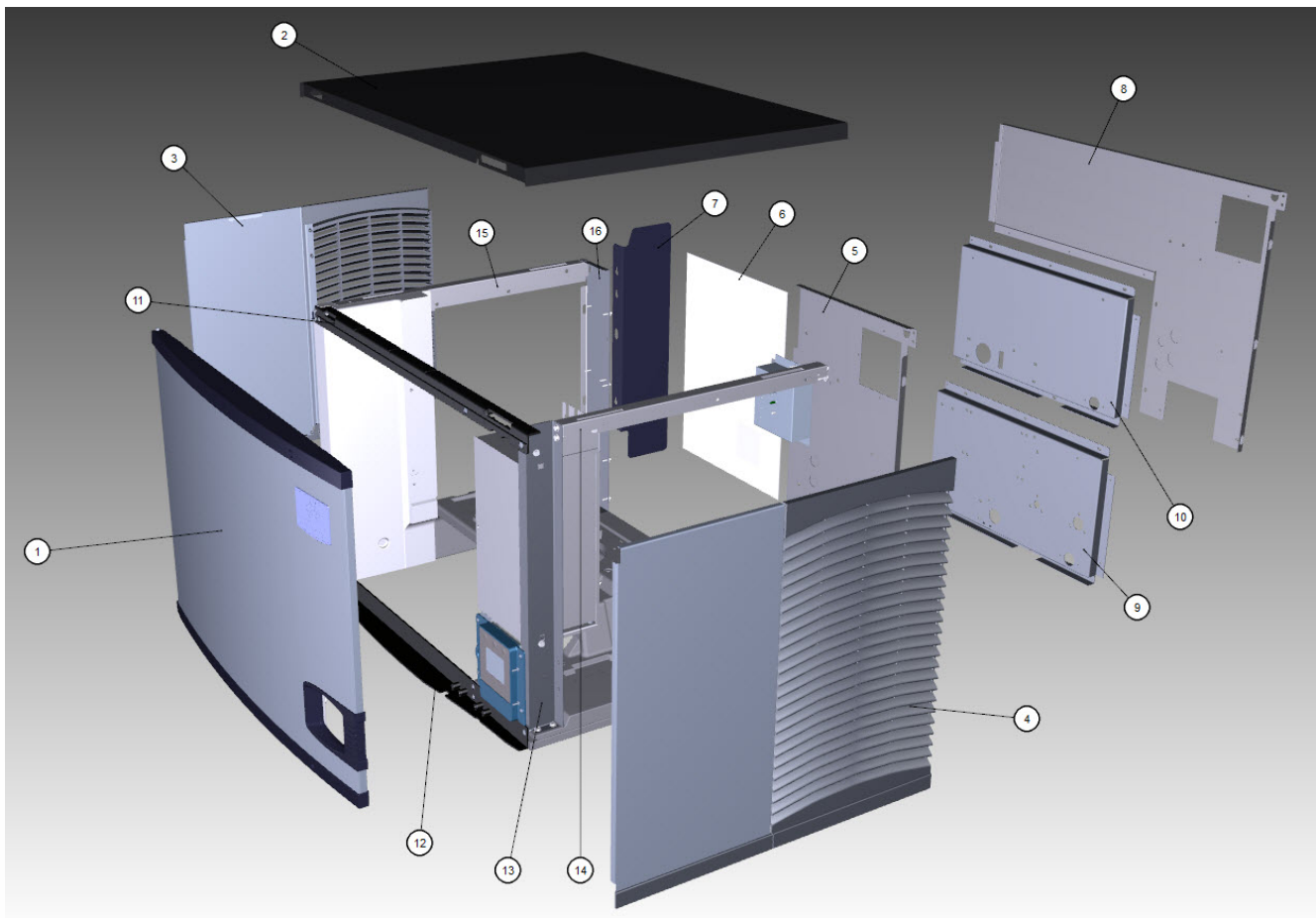
iT0500, iP0500 Indigo NXT, JCT0500

iT0500, iP0500 - Evaporator Compartment

#	PART #	DESCRIPTION	QTY	Note
[6]	-	Includes water pump o-rings 50 Hz		
[7]	-	Includes o-rings. IP0500 R290 Models Only		
[8]	-	Before SN1121208286 - Metal Bulkheads		
[9]	-	After SN1121208287 - Plastic Bulkheads		
[10]	-	Tape into Place		
[11]	-	Includes Cover and Instructions		
[12]	-	Includes ice thickness probe, clip and washer.		
[13]	-	Back of Distribution Assembly		
[14]	-	Includes top frame disks and hex nuts.		
[15]	-	Mounts Housing Assembly to Machine		
[16]	-	Water Distribution Tube Mounting		

iT0500, iP0500 Indigo NXT, JCT0500

iT0500, iP0500 - Panels



iT0500, iP0500 Indigo NXT, JCT0500

iT0500, iP0500 - Panels

#	PART #	DESCRIPTION	QTY	Note
1	000015667	Front Panel Assembly - 30" x 21.5"		
1a	040008047	Front Panel Assembly - 30" x 21.5" - SS		[1]
1b	000006538	Front Panel Top Endcap - Hinged		
1c	040007386	Front Panel Top Endcap		[2]
1d	000006539	Front Panel Bottom Endcap - Hinged		
1e	040007387	Front Panel Bottom Endcap		[2]
1f	5004899	Front Panel Screw		
1g	000009024	Foam Tape - 0.375" x 0.375" x 12.0"		[3]
2	000006699	Top Cover		
3	000012616	Left Side Panel - 21.5" H		
3a	040005623	Left Side Panel - 21.5" H - SS		[1]
4	000012615	Right Side Panel - 21.5" H		
4a	040005622	Right Side Panel - 21.5" H - SS		[1]
5	000011086	Back Panel - Air-cooled		
5a	000008922	Back Panel - R290		[4]
6	3005569	Air Filter - 14.29" x 16.94"		
6a	000008923	Air Filter - 14.25" x 12.58" - R290		[4]
7	000007314	Air Baffle Assembly		
8	000011092	Back Panel - Water-cooled and Remote Air-cooled		
9	000014482	Back Coupling Panel - Water-cooled and Remote Air-cooled		
10	000008482	Panel - Water Regulating Valve - High Pressure		
11	000010051	Front Top Support		
11a	5005379	Mounting Screw - #8-32 x 1.0" PHIL		
11b	5005099	Screw - #10-16 x 0.625"		
12	7602263	Bottom Door Frame		
12a	5005379	Mounting Screw - #8-32 x 1.0" PHIL		
12b	5202099	Screw - #10-24 x 0.5" PHIL		
12c	000001127	Tapping Plate - Panel Hinge Screws		
13	000010680	Right Corner Post		
14	000011032	Right Top Channel		
15	6068649	Left Top Channel		
16	000010299	Left Corner Post		
17	3005579	Left Panel Pivot Leaf Hinge		
18		Electrical Box on Rear of Ice Machine		
18a	6067289	Rear Connection Box		
18b	6067299	Cover - Rear Connection Box		
18c	2006143	Terminal Block - 50 Hz - 3 Pole		
18d	5202169	Screw - #10-24 x 0.5" Ground		
19	K00379	Top Air Discharge Kit Option		[5]
20	7112239	Cartoning		
21	000006564	LCD Frame without Key Guard		
22	000012003	Bulkhead Gasket		

PART NOTES:

- [1] - APAC and EMEA Only
Only Used with Serial Numbers Beginning with 31

iT0500, iP0500 Indigo NXT, JCT0500

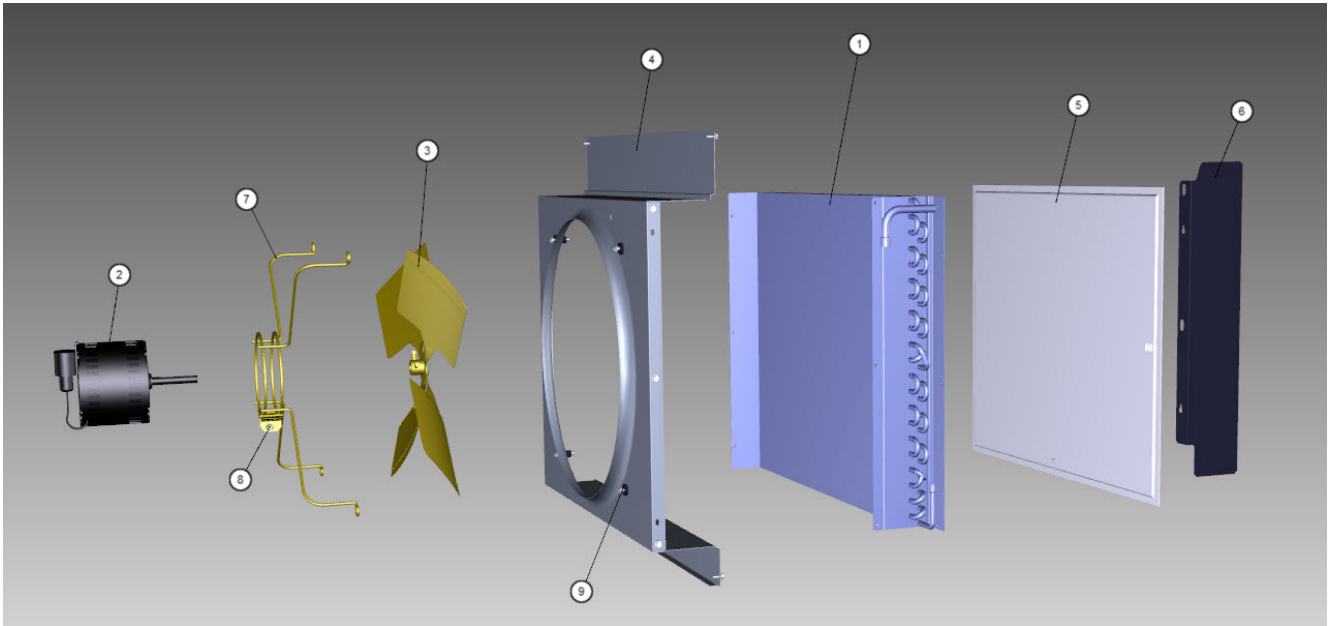
iT0500, iP0500 - Panels

#	PART #	DESCRIPTION	QTY	Note
[2]	-	APAC EMEA Only Only Used with Serial Numbers Beginning with 31		
[3]	-	Priced per foot. Must order 25 feet.		
[4]	-	IP0500 R290 Models Only		
[5]	-	Top air discharge kits are used when there is not sufficient clearance on the sides of an air-cooled machine. The kit will change the side panels and top panel so the air intake is from the back of the machine and the exhaust is re-routed out of the top of the machine rather than the sides.		

Includes Louvered Top Cover, Solid LH Panel, Solid RH Panel and Screws.

iT0500, iP0500 Indigo NXT, JCT0500

iT0500, iP0500 - Refrigeration Compartment – Air-cooled Components



iT0500, iP0500 Indigo NXT, JCT0500

iT0500, iP0500 - Refrigeration Compartment – Air-cooled Components

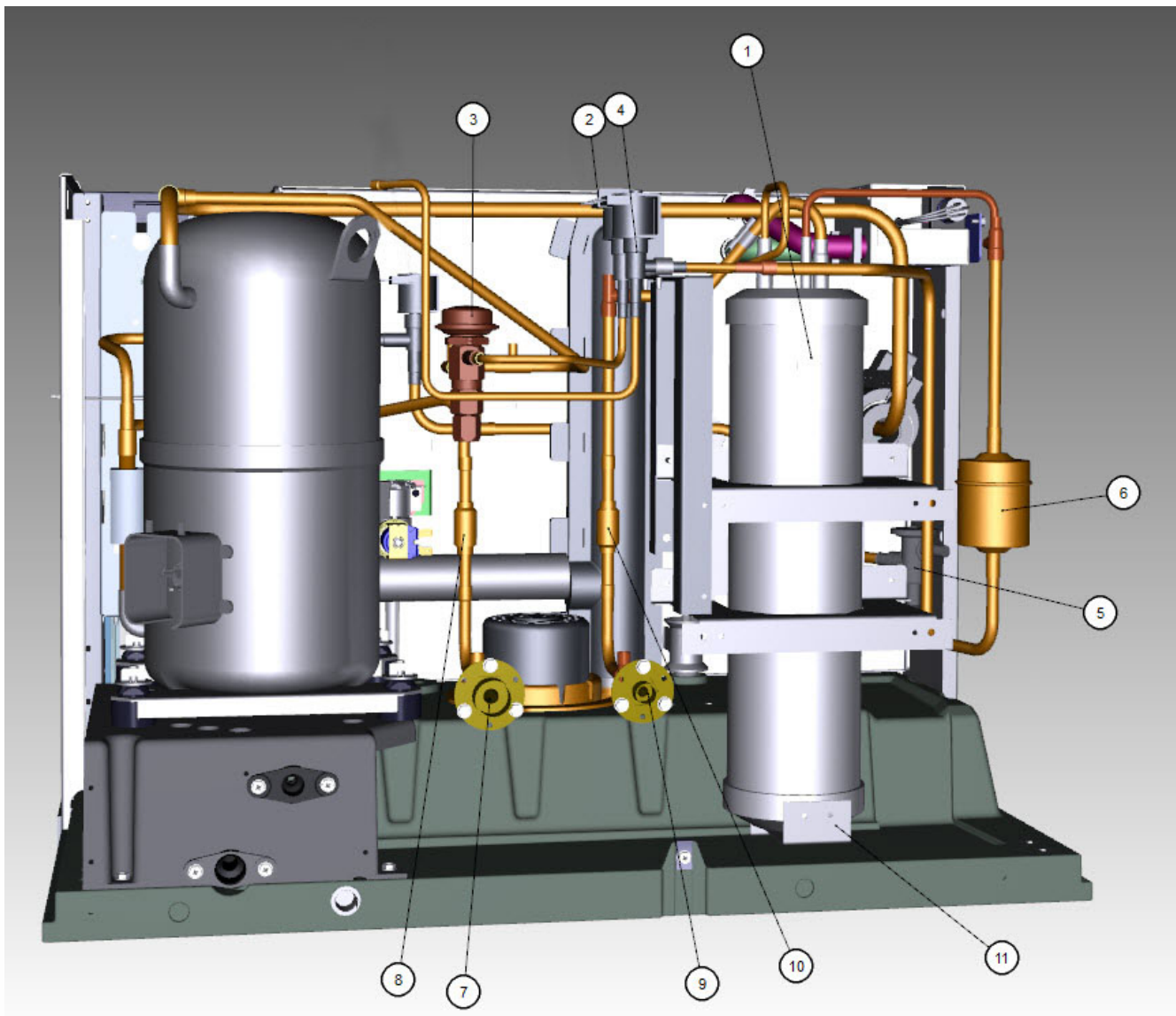
#	PART #	DESCRIPTION	QTY	Note
1	000008850	Air Condenser		
1a	000008785	Air Condenser - R290		[1]
1b	000009061	Air Condenser Mounting Plates - R290		[1]
2a	2412929	Fan Motor - 115V/60 Hz/1 Ph		[2]
2b	2412939	Fan Motor - 208-230V/50-60 Hz		[3]
3	2416203	Fan Blade		
4	000013957	Fan Shroud		
4a	000008921	Fan Shroud - R290		[1]
5	3005569	Air Filter - 14.29" x 16.94"		
5a	000008923	Air Filter - 14.25" x 12.58" - R290		[1]
6	000007314	Air Baffle Assembly		
7	000014018	Fan Motor Bracket		
8		Fan Motor Mounting		
8a	5033589	Screw		
8b	5545109	Mounting - Lock Washer		
8c	5429529	Mounting - Hexnut		
9		Fan Bracket Mounting		
9a	5033589	Screw		
9b	5545109	Mounting - Lock Washer		
9c	5573059	Flat Washer		
9d	5429559	Rubber Wellnut		
10	5202069	Screw - #10-24 x 0.5" HEX		

PART NOTES:

- [1] - IP0500 R290 Models Only
- [2] - Includes Nuts
- [3] - Includes Nuts.

iT0500, iP0500 Indigo NXT, JCT0500

iT0500 - Refrigeration Compartment – Remote Components



iT0500 - Refrigeration Compartment – Remote Components

iT0500, iP0500 Indigo NXT, JCT0500

iT0500 - Refrigeration Compartment – Remote Components

#	PART #	DESCRIPTION	QTY	Note
1	000014656	Receiver		
2		Harvest Pressure Regulating Solenoid Valve		
2a	000015051	Solenoid Valve 0.25" x 0.25" Including 115V/60 Hz Electrical Coil		[1]
2b	000005156	Solenoid Valve Coil Only - 115V/60 Hz		
3	000015157	Harvest Pressure Regulating (HPR) Valve		[2]
4		Liquid Line Solenoid Valve		
4c	000015049	Solenoid Valve 0.25" x 0.25" Including 115V/60 Hz Electrical Coil		[3]
4d	000005156	Solenoid Valve Coil Only - 115V/60 Hz		
5	000015021	Expansion Valve		
6	8930279	Drier without Access Port - 0.375"		
7	000014478	Coupling - Male - 1.17"-12		
7a	8360063	Coupling Mounting Flange for 1.17"-12		
8	8373149	Magni-Check Valve - 0.375"		
9	000014478	Coupling - Male - 0.625"-18		
9a	8360053	Coupling Mounting Flange for 0.625"-18		
10	8373149	Magni-Check Valve - 0.375"		
11		Receiver Mounting		
11a	6000561	Mounting Bracket - Receiver		
11b	6307214	Mounting Strap - Receiver		
11c	000010983	Support Bracket		
11d	000011072	Base - Water/RemoteCondenser		
11e	5202069	Screw - #10-24 x 0.5" HEX		

PART NOTES:

- [1] - With Screen
- [2] - HPR
- [3] - Without Screen
Danfoss

iT0500, iP0500 Indigo NXT, JCT0500

iT0500 - Refrigeration Compartment – Water-cooled Components



iT0500 - Refrigeration Compartment – Water-cooled Components

iT0500, iP0500 Indigo NXT, JCT0500

iT0500 - Refrigeration Compartment – Water-cooled Components

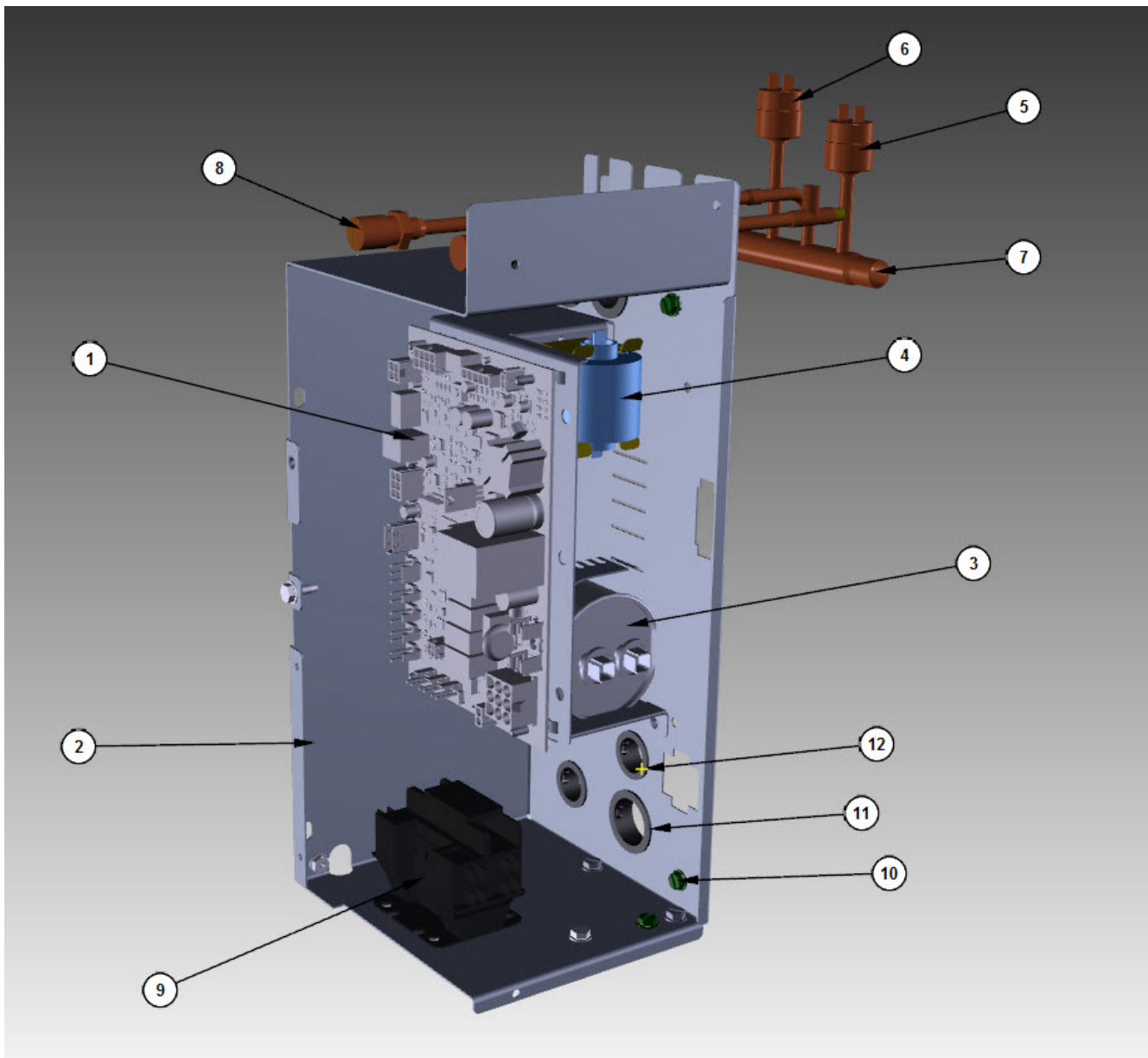
#	PART #	DESCRIPTION	QTY	Note
1	8865333	Water-cooled Condenser		
2	000013475	Water Regulating Valve - 0.375"		
3	000008892	Receiver		
4	5003883	Flare Nut - 0.5"		
4a	8332033	Water Coupling		
5	000014482	Back Coupling Panel - Water-cooled and Remote Air-cooled		
6	6000541	Receiver Strap		
7	5002249	Elbow - 0.5" MF x 0.375" MPT		
8	5202069	Screw - #10-24 x 0.5" HEX		
9	5573419	Washer		
10	000010604	Mounting Base - Water Condenser or Receiver		
11	8706083	Female Wing Adapter - Brass - 0.5"		[1]

PART NOTES:

[1] - Condenser Drain

iT0500, iP0500 Indigo NXT, JCT0500

iT0500, iP0500 - Control Box



iT0500, iP0500 - Control Box

iT0500, iP0500 Indigo NXT, JCT0500

iT0500, iP0500 - Control Box

#	PART #	DESCRIPTION	QTY	Note
1	000015208	Control Board		
1a	000015009	Ceramic Fuse - 6.3A		
2	000013818	Control Box		
2a	000012138	Control Box Cover		
2b	000007564	Control Board Mounting Bracket		
2c	4302253	Control Board Mounting Supports		
3a	000010708	Run Capacitor - 115-230V/50-60 Hz/1 Ph		[1]
3b	8503933	Run Capacitor - 115-230V/50-60 Hz/1 Ph		[2]
3c	000010715	Run Capacitor - 230V/50-60 Hz/1 Ph		[3]
3d	000011640	Run Capacitor - 230V/50-60 Hz/1 Ph		[3]
3e	6021601	Capacitor Mounting Strap		
4	000014323	PTCR - 12A		[4]
4a	8505013	PTCR Mounting Bracket		
	2007579	Start Relay - 230V/60 Hz/1 Ph		[5]
	8505823	Start Capacitor - 50-60 Hz/1 Ph		[6]
5	000013576	High Pressure Cut-out 450-600 psig		
5a	000013577	High Pressure Cut-out - 250-350 psig - R290		[7]
6	000013531	Fan Cycling Control - 335-275 psig		
6a	000013507	Fan Cycling Control - 150-200 psig - R290		[7]
7	000011170	Manifold Strainer		
7a	6058571	Bracket - Access Valves/Manifold Strainer		
7b	000010699	Grommet - Manifold Strainer		
8a	8373263	Access Valve - 7.25" L		
8b	8373253	Access Valve - 6.0" L		
8c	7626843	Valve Cores		
8d	000012264	Refrigeration Service Valve Assembly - 0.3125"		
9		Contactors		
9a	2006589	Contactors - 115V/60 Hz/1 Ph		
9b	2009089	Contactors - 208-230V/50-60 Hz/1 Ph		
9c	2006619	Contactors - 230V/60 Hz/3 Ph		
10	5202169	Screw - #10-24 x 0.5" Ground		
10a	5573209	Star Washer		
11	2500019	Bushing - 1.187"		
12	2501409	Bushing - 0.875"		
13	5202069	Screw - #10-24 x 0.5" HEX		
13a	5573209	Star Washer		
14		Control Box Wiring Harness		
14a	000007696	Control Box Wiring Harness - 115V/60 Hz/1 Ph		
14b	000007179	Control Box Wiring Harness - 230V/60 Hz/1 Ph		
14c	000007180	Control Box Wiring Harness - 230V/50 Hz/1 Ph		
14d	000009996	Control Box Wiring Harness R290 - 230V/50 Hz/1 Ph to Control Board		
15	2008263	Wiring Harness - Compressor - 3 Ph		
16		Compressor Compartment Wiring Harness		
16a	000007185	Wiring Harness - Compressor Compartment - Air-cooled		
16b	000007177	Wiring Harness - Compressor Compartment - Water-cooled		

iT0500, iP0500 - Control Box

iT0500, iP0500 Indigo NXT, JCT0500

iT0500, iP0500 - Control Box

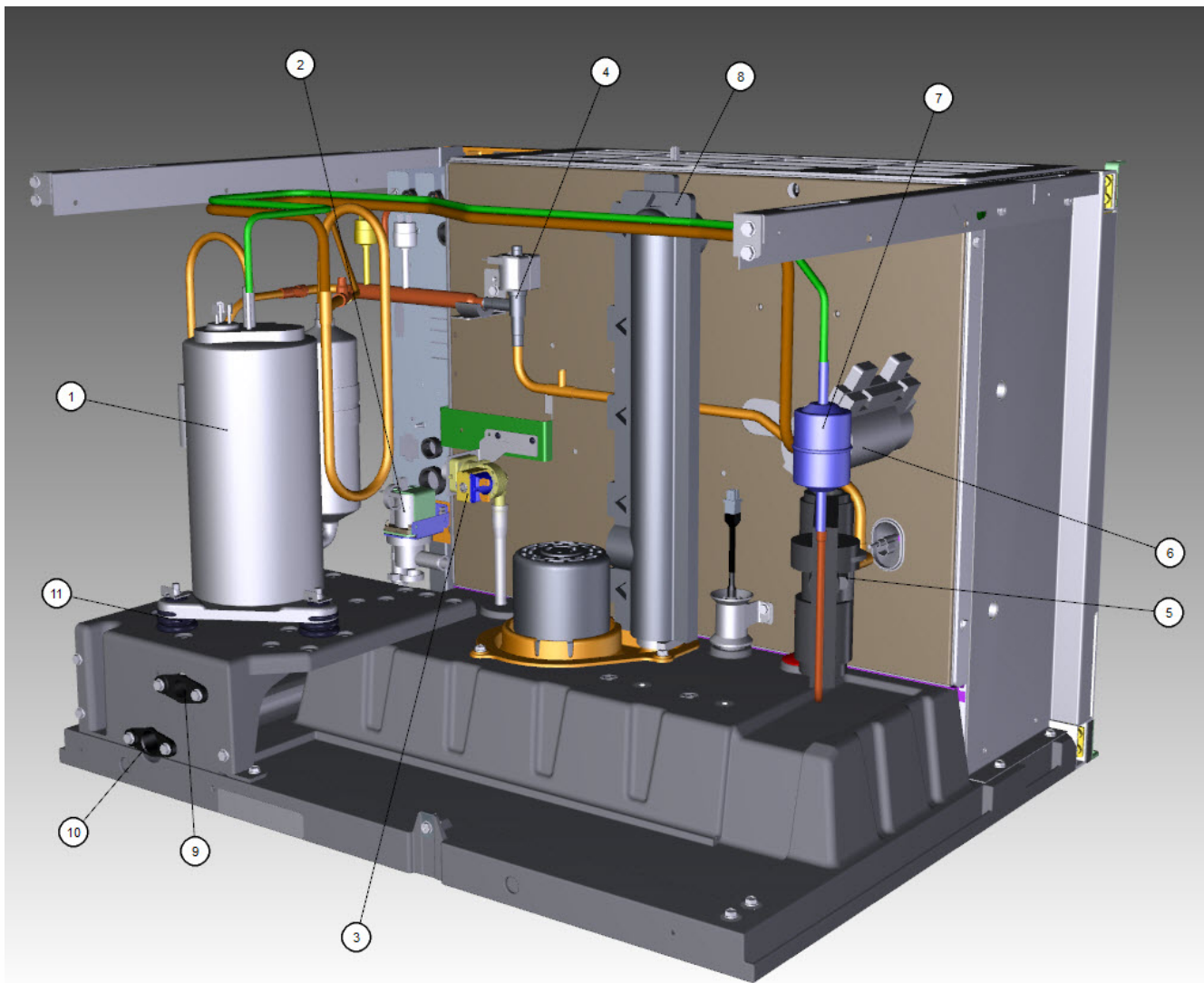
#	PART #	DESCRIPTION	QTY	Note
16c	000007184	Wiring Harness - Compressor Compartment - Remote Air-cooled		
17	000012569	Electronic Noise Filter - Korea		
17a	000005500	Electrical Noise Filter Wiring Harness		
17b	000011505	Terminal Cover		
17c	000011506	Terminal Cover Gasket		
18		IP0500 Only Components		
18a	000009209	Contactor Box - R290		
18b	000009210	Contactor Box Cover - R290		
18c	000009211	Contactor Box False Bottom - R290		
18d	2502283	Strain Relief		
18e	000009262	Contactor Wiring Harness - R290		
18f	2006143	Terminal Block - 50 Hz - 3 Pole		
18g	000000022	Start Capacitor - 115-230V/50-60 Hz/1 Ph		
18h	2009493	Run Capacitor - 230V/50-60 Hz/1 Ph		
18i	2007929	Start Potential Relay - 208-230V/50-60 Hz/1 Ph		
18j	000009064	Compressor Plug - R290		

PART NOTES:

- [1] - Used with Samsung Compressors 115V/60 Hz/1 Ph - AWN Models
- [2] - Used with Bristol Compressors 115V/60 Hz/1 Ph - Remote Models
- [3] - Used with Samsung Compressors 230V/60 Hz/1 Ph - AWN Models
- [4] - Used with Samsung Compressors - AWN Models
- [5] - Includes Terminal Adapter
Used with Bristol Compressors 115V/60 Hz/1 Ph - Remote Models
- [6] - Used with Samsung Compressors 115V/60 Hz/1 Ph - Remote Models
- [7] - IP0500 R290 Models Only

iT0500, iP0500 Indigo NXT, JCT0500

iT0500, iP0500 - Refrigeration Compartment - Common Components



iT0500, iP0500 - Refrigeration Compartment - Common Components

iT0500, iP0500 Indigo NXT, JCT0500

iT0500, iP0500 - Refrigeration Compartment - Common Components

#	PART #	DESCRIPTION	QTY	Note
1		Compressor		
1a	000014237	Compressor - Bristol - 115V/60 Hz/1 Ph - USE UP		[1]
1b	000010315	Compressor - Samsung - 115V/60 Hz/1 Ph		[2]
1c	000018337	Compressor - Samsung - 115V/60 Hz/1 Ph		[3]
1d	000010316	Compressor - Samsung - 208-230V/60 Hz/1 Ph		
1e	000010464	Compressor - Samsung - 230V/50 Hz/1 Ph		
1f	000010044	Compressor - 230V/50 Hz/1ph - R290		[4]
1g	000011182	Wiring Harness - Compressor - Samsung		
2a	000014062	Water Dump Valve - 115V/60 Hz		
2b	000014063	Water Dump Valve - 208-230V/50-60 Hz		
2c	6058459	Mounting Bracket - Water Dump Valve		
3a	000009120	Water Inlet Valve - 115V/60 Hz/1 Ph		[5]
3b	000009126	Water Inlet Valve - 208-230V/50-60 Hz		[5]
4		Harvest Valve		
4a	000015043	Solenoid Valve 0.375" x 0.375" Including 115V/60 Hz Electrical Coil		[6]
4b	000005156	Solenoid Valve Coil Only - 115V/60 Hz		
4c	000015042	Solenoid Valve 0.375" x 0.375" Including 208-230V/50-60 Hz Electrical Coil		[6]
4d	000005157	Solenoid Valve Coil Only - 230V/50-60 Hz		
5a	000015015	Expansion Valve		[7]
5b	000015021	Expansion Valve		[8]
5c	000008875	Expansion Valve - R290		[9]
5d	000012443	Valve Insulation Boot - Body - Danfoss		
6	000002719	Valve Insulation Boot - Bulb - Danfoss		
6a	5650529	Clamp - Expansion Valve Bulb		
6b	3000503	Strap - Expansion Valve Bulb - 0.5"		
7a	000015361	Drier with Access Port - 0.25"		[10]
7b	8930279	Drier without Access Port - 0.375"		[8]
7c	8930259	Drier without Access Port - 0.25"		[11]
8	000015402	Insulated Tube		[12]
8a	5650609	Snap Clamp - 1.0" ID		
8b	5650709	Snap Clamp - 0.8" x 0.9" ID		
9	000005423	Female Wing Adapter - 0.5"		
10	8706093	Female Wing Adapter - Brass - 0.375"		[13]
10a	1360961	Male Connector - 0.375"		
11		Compressor Mounting		
11a	000008346	Compressor Base		
11b	8503069	Mounting - Rubber Grommet		
11c	8503949	Mounting - Sleeve		
11d	5004819	Compressor Mounting - Bolt		
11e	5004829	Compressor Mounting - Nut		
12	4420383	Clear Tubing - 0.625" ID		
13	4420291	Tygon Tube - 0.25" OD		
14a	4010439	Tubing - Water Inlet Valve		
15	000001382	Vinyl Tubing 0.625" ID		[14]
15a	6038831	Insulation - 0.88" ID x 0.25" W x 13.5" L		

iT0500, iP0500 - Refrigeration Compartment - Common Components

iT0500, iP0500 Indigo NXT, JCT0500

iT0500, iP0500 - Refrigeration Compartment - Common Components

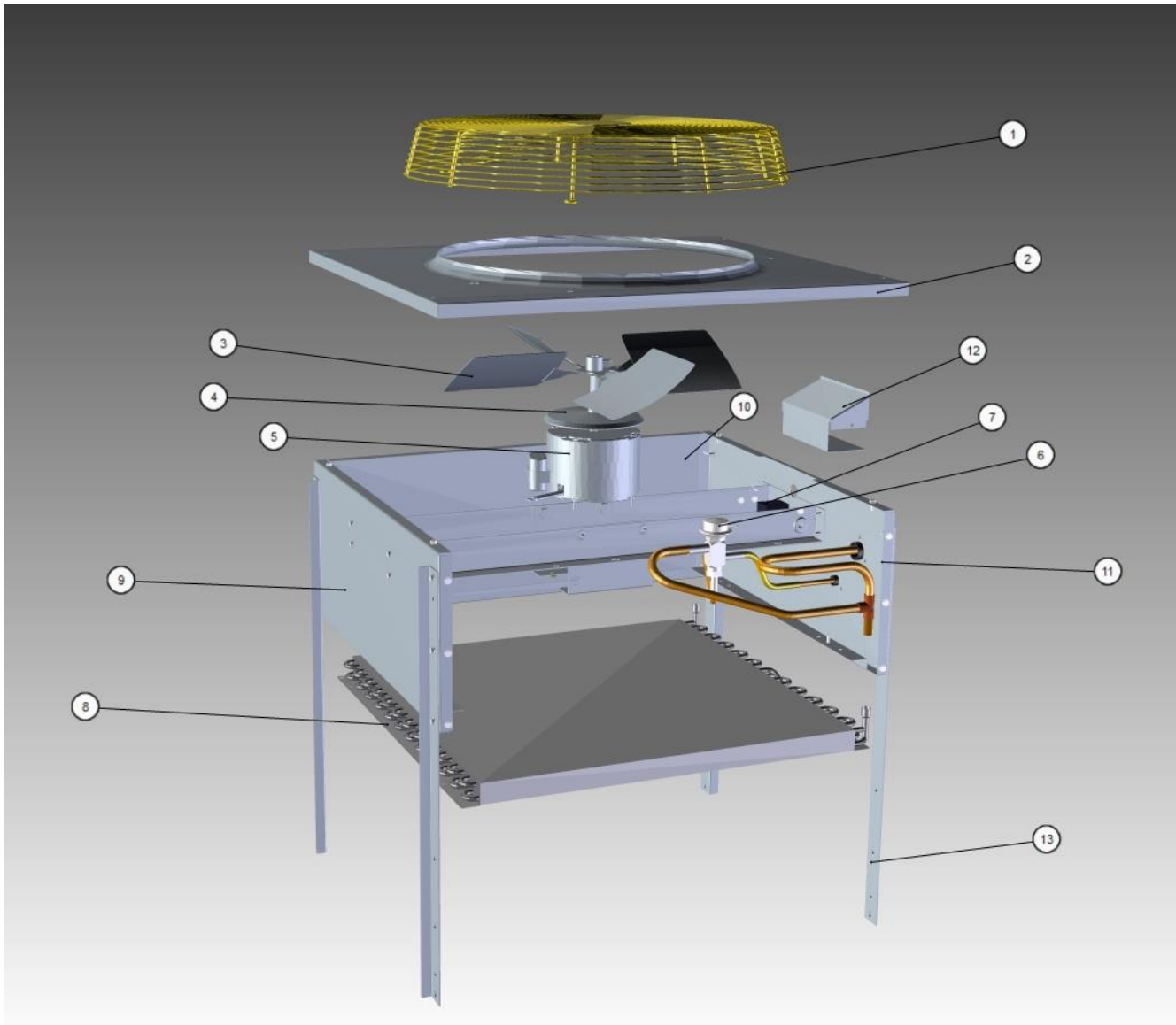
#	PART #	DESCRIPTION	QTY	Note
15b	5650709	Snap Clamp - 0.8" x 0.9" ID		
16	000015573	Thermistor with Spring Clips		
17	K00454	LuminIce II - Bulb		
17a	000014037	Wiring Harness - LuminIce II		
18	000007223	Air Assist - 230V		
18a	4011739	Air Manifold		[15]
18b	000014419	Air Assist Bracket		
18c	3001453	Air Assist - Nozzle		[16]
18d	4420883	Vinyl Tubing - 0.25" ID		
18e	9002593	Tubing, Clear PVC – 0.125" ID x 0.25" OD		
19	5202069	Screw - #10-24 x 0.5" HEX		
20	000011604	Plug - Float Hole		
21	000010320	Terminal Cover		

PART NOTES:

- [1] - Remote Models Only
- [2] - Air-cooled Water-cooled Models
- [3] - Remotes Only. Replaces Bristol compressors (includes conversion kit).
- [4] - Includes compressor, start potential relay, start cap and run capacitor.
- [5] - 0.5 gpm
Includes water valve inlet, bracket, screws, adapter and locking clip.
- [6] - With Screen
- [7] - Air Water-cooled Models
- [8] - Remote Models
- [9] - IP0500 R290 Models Only
- [10] - iT0500 Air-cooled Water-cooled Models
- [11] - IP0500 Models (R290)
- [12] - vinyl tubing from distribution tube to water pump & dump valve
- [13] - Brass
If replacing a nylon fitting you must order 1360961
- [14] - dump valve to drain adapter
- [15] - Air Pump Tubing Outlet
- [16] - Nonreplacable - Soldered in place

iT0500, iP0500 Indigo NXT, JCT0500

JCT0500 Remote Condenser



JCT0500 Remote Condenser

JCT0500 Remote Condenser

Manitowoc

iT0500, iP0500 Indigo NXT, JCT0500

JCT0500 Remote Condenser

#	PART #	DESCRIPTION	QTY	Note
1	3400643	Fan Guard		
2	6017751	Top Cover		
3	2416113	Fan Blade		
4	2415053	Rain Slinger		
5	7629423	Fan Motor - 115V/60 Hz/1 Ph		
5a	000010947	Fan Motor Mounting Bracket - Support		
5b	000010917	Fan Motor Mounting Bracket and Bottom Bracket for Legs		
6	000008870	Head Pressure Control Valve - 300 PSI		
7		Not Used		
8	8850639	Air Condenser		[1]
8a	8850637	Air Condenser - Coated		
9	000000607	Panel - Front		
10	000010865	Panel - Side		
11	000000608	Panel - Rear		
12	6017761	Electrical Box Cover		
13	000010873	Legs		[2]
14	5035659	Fan Motor Mounting Screw		
14a	5573099	Mounting - Flat Washer		
14b	5573139	Lockwasher		
14c	5429759	Hex Nut		
15	5033459	Screw - 0.25"-20 x 0.625"		
15a	5573049	Flat WasherMounting -		
15b	5545119	Mounting - Lock Washer		
15c	5429529	Mounting - Hexnut		
16	5202069	Screw - #10-24 x 0.5" HEX		
17	K00129	Female Line Set Coupling Kit		
18	7108369	Cartoning		

PART NOTES:

- [1] - Includes fush-cop bushing.
- [2] - Sold Individually

JCT0500 Remote Condenser