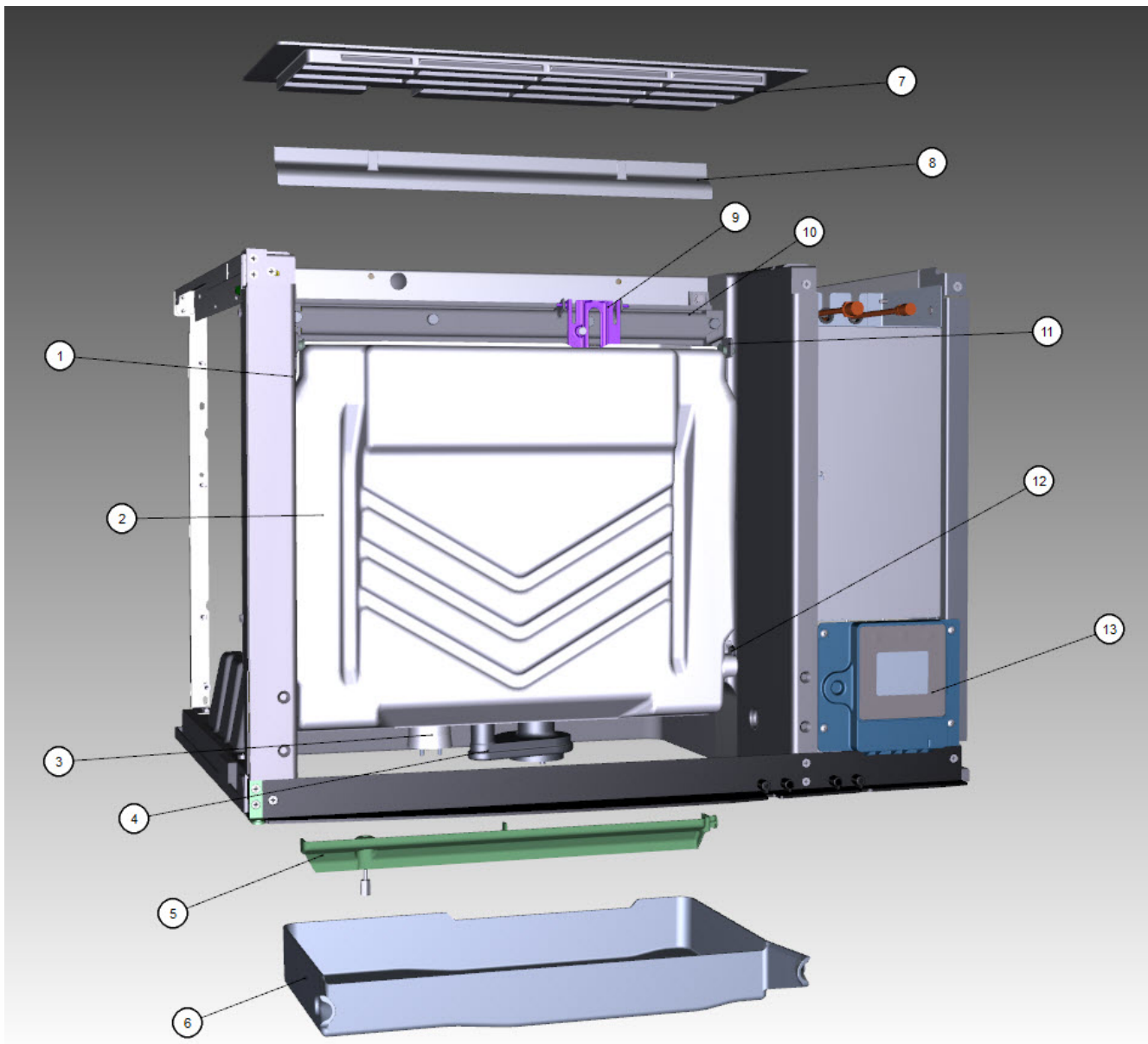


iT0750 Indigo NXT, JCT1200

iT0750 - Evaporator Compartment



iT0750 - Evaporator Compartment

iT0750 Indigo NXT, JCT1200

iT0750 - Evaporator Compartment

#	PART #	DESCRIPTION	QTY	Note
1		Evaporator Assembly		
1a	7602839	Evaporator - Dice Cube		
1b	7602849	Evaporator - Half Dice Cube		
2	4010979	Water Curtain		
3	000016053	Water Level Probe		[1]
3a	000007724	Wire - Control Box to Water Level Probe		[2]
3b	000007053	Water Level Probe - Holder		
3c	5202099	Screw - #10-24 x 0.5" PHIL		[3]
4		Water Pump - See Note for Usage		
4a	2008109	Water Pump - 230V/60 Hz		[4]
4b	8252109	Water Pump - 230V/50-60 Hz		[5]
4c	000010244	Water Pump Mount		
5	7602213	Water Diverter - 30" Models		
5a	5305123	Thumbscrew SS - #8-32 x 0.44"		
6	000010828	Water Trough - 30"		
7	000010322	Foodzone Seal Panel - 30"		[6]
8	4008469	Evaporator Top Filler Panel		[7]
8a	6063339	Bracket - Top Filler Panel		
8b	5202099	Screw - #10-24 x 0.5" PHIL		
9	000015292	Ice Thickness Control Probe		[8]
10	7602193	Water Distribution Tube - 30"		
10a	5004649	O-Rings - 0.675"		[9]
11	7602203	Evaporator Top Frame Assembly - 30"		[10]
11a	040008623	Evaporator Top Frame Assembly - 30" - without RTV Silicone		[11]
11b	4009613	Evaporator Bottom Frame Assembly		
11c	5429139	Hex Nut - #8-32 Brass		
12	000007888	Magnetic Bin Switch		
12a	000014038	Bin Switch Wiring Harness		
13	000015154	Touch Screen Housing Assembly - 30"/48"		
13a	000006697	Mounting Bracket		[12]
14	5004799	Thumbscrew SS - #8-32 x 0.375"		[13]
14a	5004629	O-Ring - 0.125" ID		
15	5004619	Screw - #12-16 x 0.687"		
16	5004659	Water Pump Base O-Ring - 4.00" ID		
17	5004679	Water Pump Outlet O-Ring - 0.875" ID		

PART NOTES:

- [1] - Includes probe and wire.
- [2] - No Longer Available - must order Water Level Probe for new wire
- [3] - Mount Water Level Probe Holder
- [4] - Includes O-Rings
60 Hz
- [5] - Includes o-rings.
50 Hz
- [6] - Tape into Place
- [7] - Includes Cover and Instructions
- [8] - Includes ice thickness probe, clip and washer.
- [9] - Back of Distribution Assembly

iT0750 - Evaporator Compartment

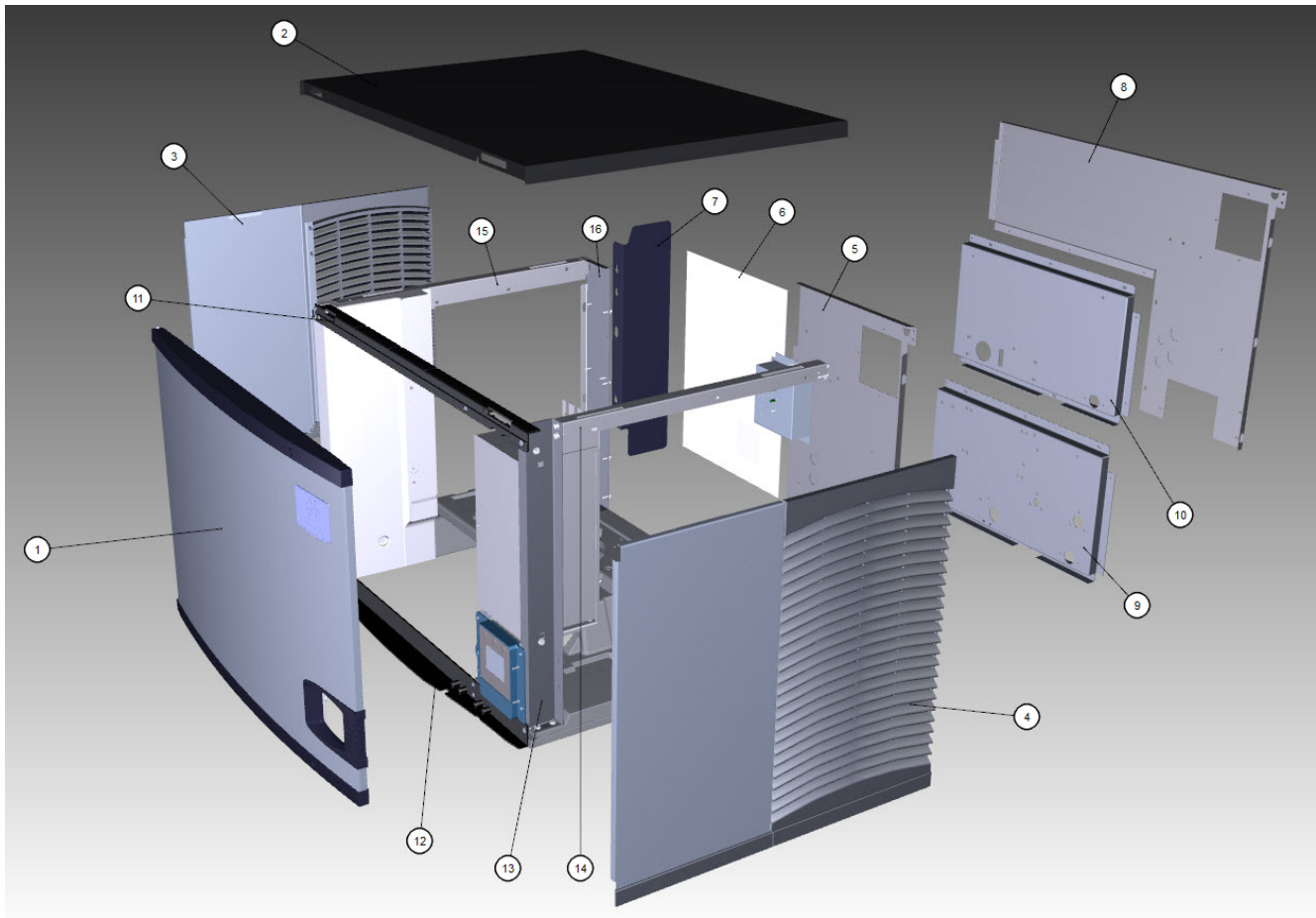
iT0750 Indigo NXT, JCT1200

iT0750 - Evaporator Compartment

#	PART #	DESCRIPTION	QTY	Note
[10]	-	Includes top frame disks and hex nuts.		
[11]	-	Outside of China Market		
[12]	-	Mounts Housing Assembly to Machine		
[13]	-	Water Distribution Tube Mounting		

iT0750 Indigo NXT, JCT1200

iT0750 - Panels



iT0750 Indigo NXT, JCT1200

iT0750 - Panels

#	PART #	DESCRIPTION	QTY	Note
1	000015667	Front Panel Assembly - 30" x 21.5"		
1a	040008047	Front Panel Assembly - 30" x 21.5" - SS		[1]
1b	000006538	Front Panel Top Endcap - Hinged		
1c	040007386	Front Panel Top Endcap		[2]
1d	000006539	Front Panel Bottom Endcap - Hinged		
1e	040007387	Front Panel Bottom Endcap		[2]
1f	5004899	Front Panel Screw		
1g	000009024	Foam Tape - 0.375" x 0.375" x 12.0"		[3]
2	000006699	Top Cover		
3	000012616	Left Side Panel - 21.5" H		
3a	040005623	Left Side Panel - 21.5" H - SS		[1]
4	000012615	Right Side Panel - 21.5" H		
4a	040005622	Right Side Panel - 21.5" H - SS		[1]
5	3005689	Air Filter - 18.88" x 17.19"		
6	000011039	Back Panel - Air-cooled		
7	000007314	Air Baffle Assembly		
8	000011092	Back Panel - Water-cooled and Remote Air-cooled		
9	6061739	Back Coupling Panel - Water-cooled and Remote Air-cooled		
10	000008482	Panel - Water Regulating Valve - High Pressure		
11	000010051	Front Top Support		
11a	5005379	Mounting Screw - #8-32 x 1.0" PHIL		
11b	5005099	Screw - #10-16 x 0.625"		
12	7602263	Bottom Door Frame		
12a	5005379	Mounting Screw - #8-32 x 1.0" PHIL		
12b	5202099	Screw - #10-24 x 0.5" PHIL		
12c	000001127	Tapping Plate - Panel Hinge Screws		
13	000011326	Right Corner Post		
14	000011032	Right Top Channel		
15	6068649	Left Top Channel		
16	000011100	Left Corner Post		
17	3005579	Left Panel Pivot Leaf Hinge		
18		Electrical Box on Rear of Ice Machine		
18a	6067289	Rear Connection Box		
18b	6067299	Cover - Rear Connection Box		
18c	2006143	Terminal Block - 50 Hz - 3 Pole		
18d	5202169	Screw - #10-24 x 0.5" Ground		
19	K00379	Top Air Discharge Kit Option		[4]
20	7112239	Cartoning		
21	000006564	LCD Frame without Key Guard		
22	000012003	Bulkhead Gasket		

PART NOTES:

- [1] - APAC and EMEA Only
Only Used with Serial Numbers Beginning with 31
- [2] - APAC EMEA Only
Only Used with Serial Numbers Beginning with 31

iT0750 Indigo NXT, JCT1200

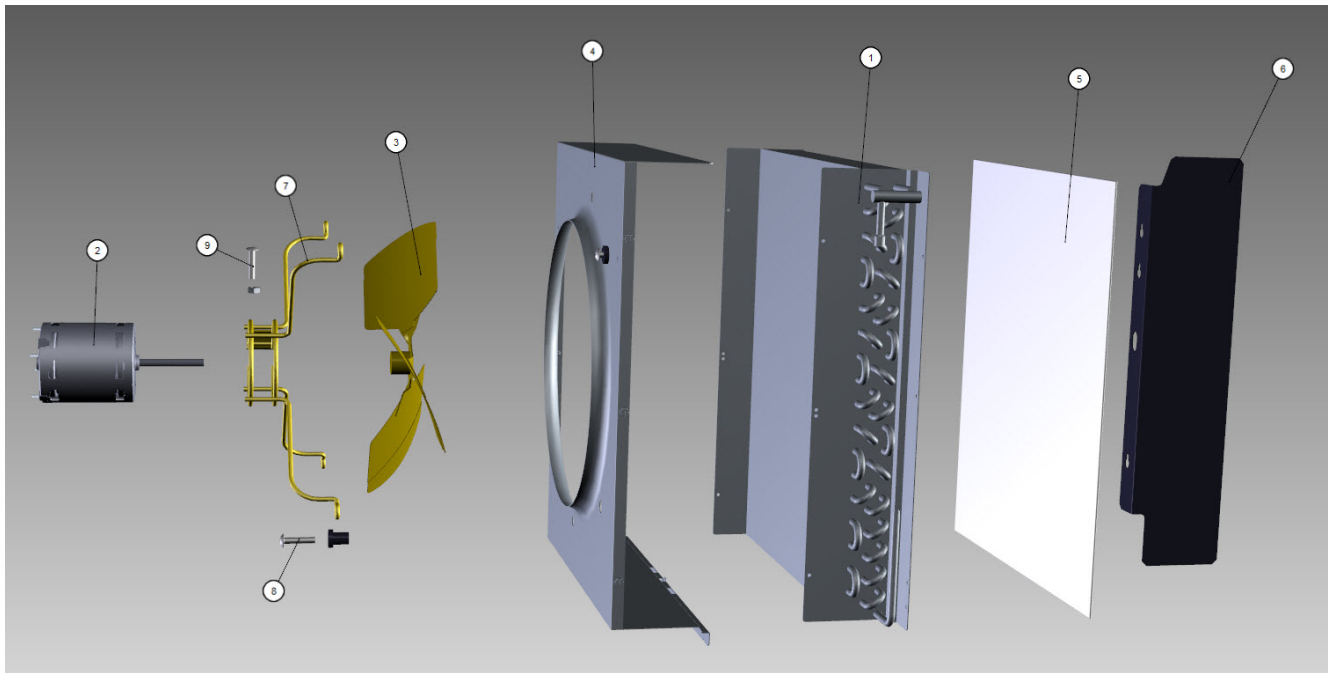
iT0750 - Panels

#	PART #	DESCRIPTION	QTY	Note
[3]	-	Priced per foot. Must order 25 feet.		
[4]	-	Top air discharge kits are used when there is not sufficient clearance on the sides of an air-cooled machine. The kit will change the side panels and top panel so the air intake is from the back of the machine and the exhaust is re-routed out of the top of the machine rather than the sides.		

Includes Louvered Top Cover, Solid LH Panel, Solid RH Panel and Screws.

iT0750 Indigo NXT, JCT1200

iT0750 - Refrigeration Compartment – Air-cooled Components



iT0750 - Refrigeration Compartment – Air-cooled Components

iT0750 Indigo NXT, JCT1200

iT0750 - Refrigeration Compartment – Air-cooled Components

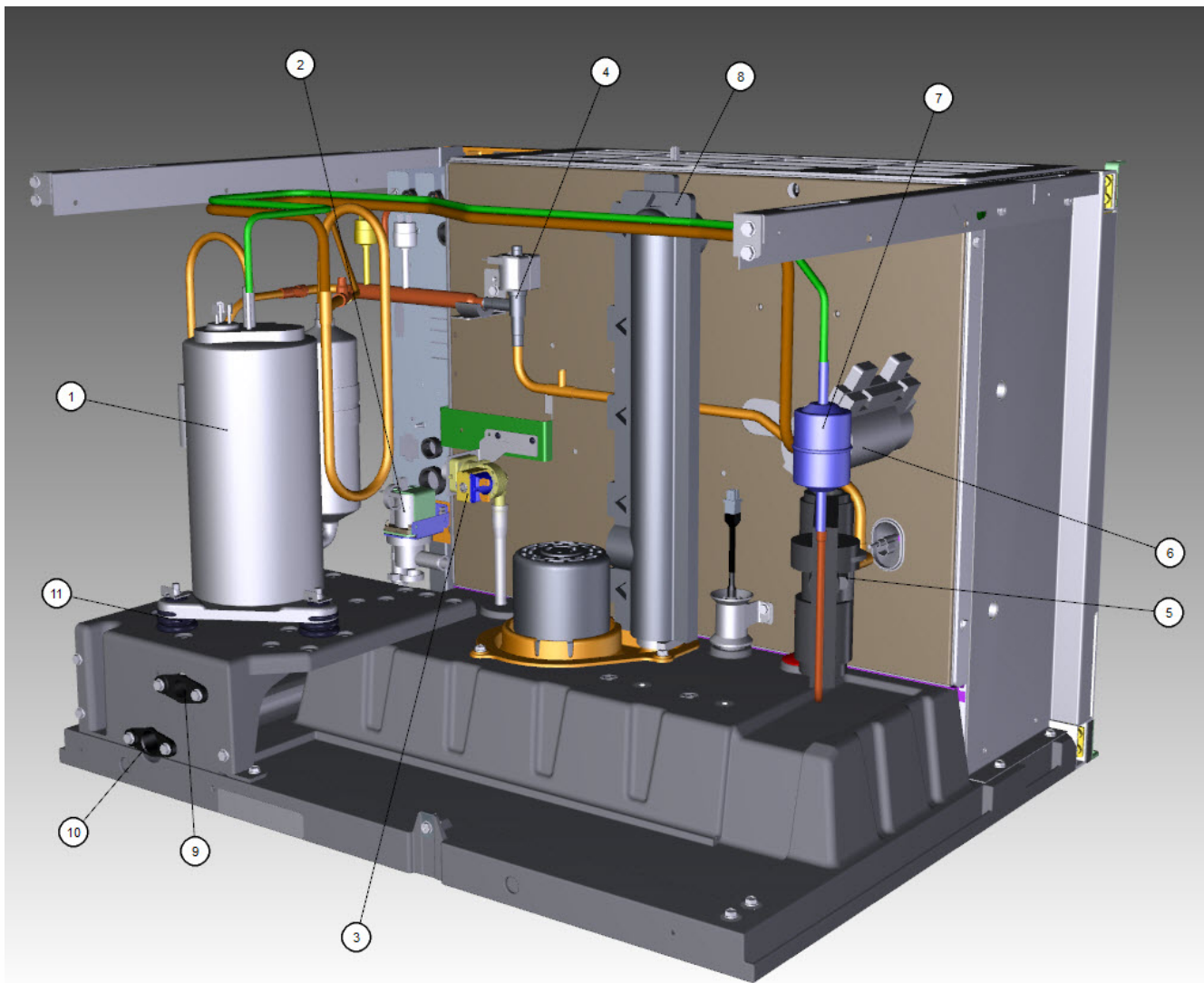
#	PART #	DESCRIPTION	QTY	Note
1	000008868	Air Condenser		
2	2412939	Fan Motor - 208-230V/50-60 Hz		[1]
3	2416173	Fan Blade		
4	000014016	Fan Shroud		
4a	5202069	Screw - #10-24 x 0.5" HEX		
5	3005689	Air Filter - 18.88" x 17.19"		
6	000007314	Air Baffle Assembly		
7	000014018	Fan Motor Bracket		
8		Fan Bracket Mounting		
8a	5033589	Screw		
8b	5545109	Mounting - Lock Washer		
8c	5573059	Flat Washer		
8d	5429559	Rubber Wellnut		
9		Fan Motor Mounting		
9a	5033589	Screw		
9b	5545109	Mounting - Lock Washer		
9c	5429529	Mounting - Hexnut		

PART NOTES:

[1] - Includes Nuts.

iT0750 Indigo NXT, JCT1200

iT0750 - Refrigeration Compartment - Common Components



iT0750 - Refrigeration Compartment - Common Components

iT0750 Indigo NXT, JCT1200

iT0750 - Refrigeration Compartment - Common Components

#	PART #	DESCRIPTION	QTY	Note
1		Compressor		
1a	000014179	Compressor - Samsung - 208-230V/60 Hz/1 Ph		
1b	040004801	Compressor - 220-240V/50 Hz/1 Ph		[1]
1c	000016231	Compressor - 220-240V/50 Hz/1 Ph		[2]
1d	000011182	Wiring Harness - Compressor - Samsung		
2	000014063	Water Dump Valve - 208-230V/50-60 Hz		
3	000009122	Water Inlet Valve - 208-230V/50-60 Hz		[3]
4		Harvest Valve		
4c	000015042	Solenoid Valve 0.375" x 0.375" Including 208-230V/50-60 Hz Electrical Coil		[4]
4d	000005157	Solenoid Valve Coil Only - 230V/50-60 Hz		
5		Expansion Valve - See Notes for Usage		
5a	000015026	Expansion Valve		[5]
5b	000015291	Expansion Valve		[6]
5c	000015022	Expansion Valve		[7]
5d	000015012	Expansion Valve - Danfoss		[8]
5e	000012443	Valve Insulation Boot - Body - Danfoss		
6	000002719	Valve Insulation Boot - Bulb - Danfoss		
6a	5650529	Clamp - Expansion Valve Bulb		
6b	3000503	Strap - Expansion Valve Bulb - 0.5"		
7	000015361	Drier with Access Port - 0.25"		
8	000015402	Insulated Tube		[9]
8a	5650609	Snap Clamp - 1.0" ID		
8b	5650709	Snap Clamp - 0.8" x 0.9" ID		
9	8706093	Female Wing Adapter - Brass - 0.375"		[10]
9a	1360961	Male Connector - 0.375"		
10	000005423	Female Wing Adapter - 0.5"		
11		Compressor Mounting		
11a	000008346	Compressor Base		
11b	8503069	Mounting - Rubber Grommet		
11c	8503949	Mounting - Sleeve		
11d	5004819	Compressor Mounting - Bolt		
11e	5004829	Compressor Mounting - Nut		
12	4420383	Clear Tubing - 0.625" ID		
13	4420291	Tygon Tube - 0.25" OD		
14	4010439	Tubing - Water Inlet Valve		
15	000001382	Vinyl Tubing 0.625" ID		[11]
15a	6038831	Insulation - 0.88" ID x 0.25" W x 13.5" L		
15b	5650709	Snap Clamp - 0.8" x 0.9" ID		
16	000015573	Thermistor with Spring Clips		
17	K00454	LuminIce II - Bulb		
17a	000014037	Wiring Harness - LuminIce II		
18	000007222	Air Assist - 115V		
18a	000007223	Air Assist - 230V		
18b	4011739	Air Manifold		[12]
18c	000014419	Air Assist Bracket		
18d	4420883	Vinyl Tubing - 0.25" ID		

iT0750 - Refrigeration Compartment - Common Components

iT0750 Indigo NXT, JCT1200

iT0750 - Refrigeration Compartment - Common Components

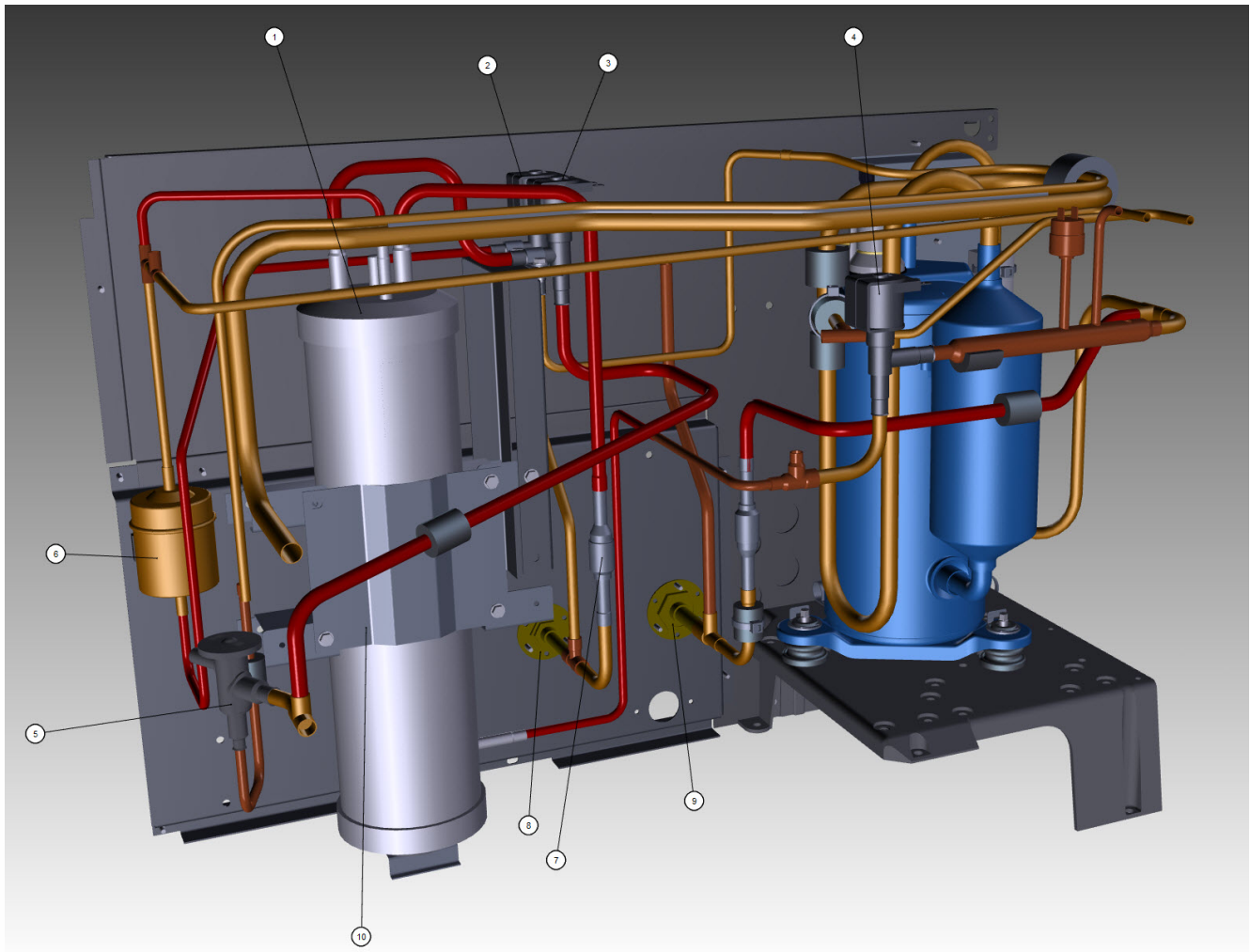
#	PART #	DESCRIPTION	QTY	Note
18e	9002593	Tubing, Clear PVC – 0.125" ID x 0.25" OD		
19	5202069	Screw - #10-24 x 0.5" HEX		
20	000011604	Plug - Float Hole		
21	000010320	Terminal Cover		

PART NOTES:

- [1] - Used on Models Before SN 1120647228
- [2] - Used on Models After SN 1120647228
- [3] - 0.78 gpm
Includes water valve inlet, bracket, screws, adapter, 0.375-18 NPT brass connector and locking clip.
- [4] - With Screen
- [5] - Air-cooled Models, 60 Hz Only
Remote Models, 50-60 Hz
- [6] - Air-cooled Models, 50 Hz Only
- [7] - Water-cooled Models, 60 Hz Only
- [8] - Water-cooled Models, 50 Hz Only
- [9] - vinyl tubing from distribution tube to water pump & dump valve
- [10] - Brass
If replacing a nylon fitting you must order 1360961
- [11] - dump valve to drain adapter
- [12] - Air Pump Tubing Outlet

iT0750 Indigo NXT, JCT1200

iT0750 - Refrigeration Compartment – Remote Components



iT0750 - Refrigeration Compartment – Remote Components

iT0750 Indigo NXT, JCT1200

iT0750 - Refrigeration Compartment – Remote Components

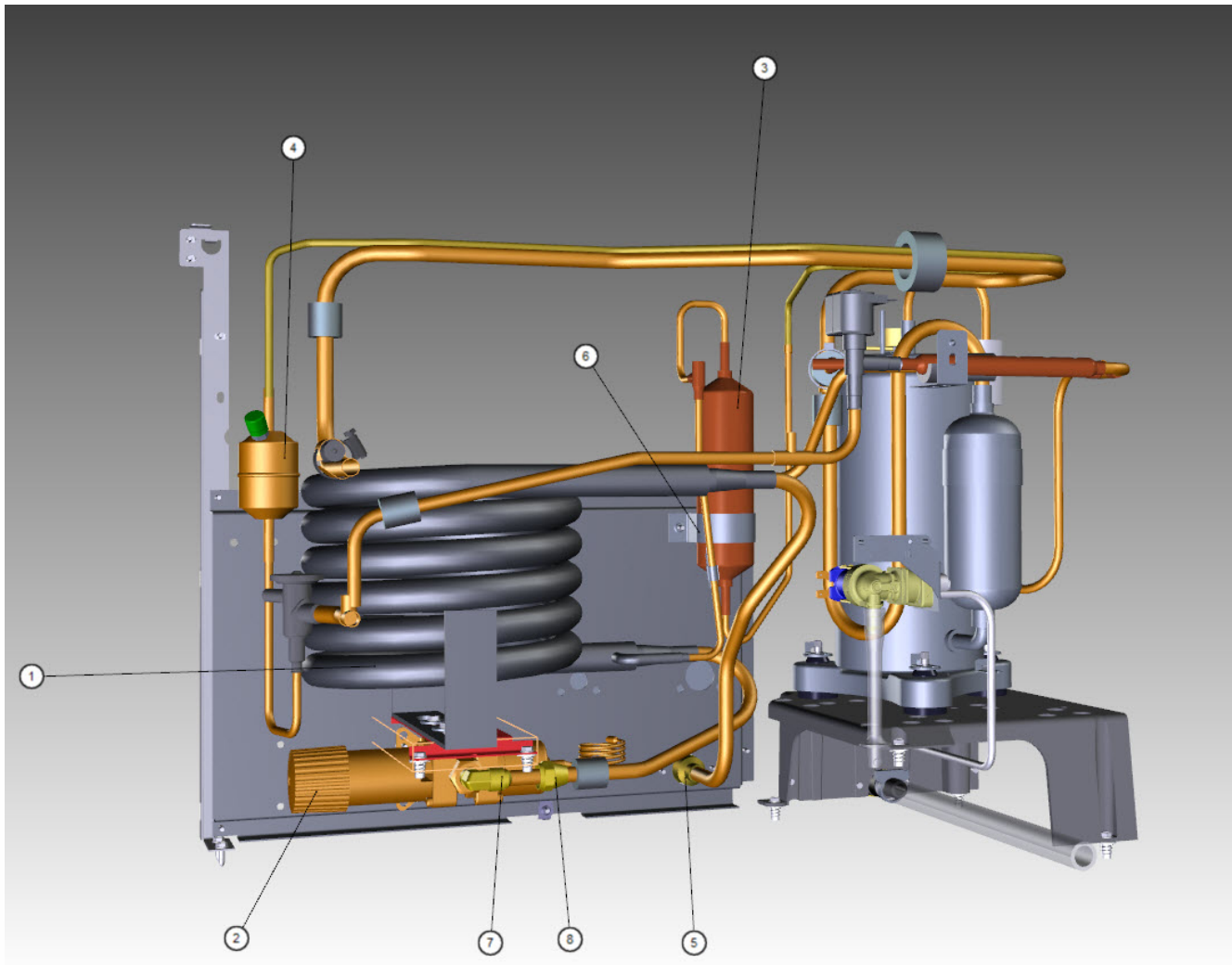
#	PART #	DESCRIPTION	QTY	Note
1	000014656	Receiver		
2		Liquid Line Solenoid Valve		
2a	000015048	Solenoid Valve 0.25" x 0.25" Including 208-230V/50-60 Hz Electrical Coil		[1]
2b	000005157	Solenoid Valve Coil Only - 230V/50-60 Hz		
3		Harvest Pressure Regulating Solenoid Valve		
3a	000015050	Solenoid Valve 0.25" x 0.25" Including 208-230V/50-60 Hz Electrical Coil		[2]
3b	000005157	Solenoid Valve Coil Only - 230V/50-60 Hz		
4		Condenser Bypass Valve		
4a	000007019	Solenoid Valve 0.375" x 0.375" Including 208-230V/50-60 Hz Electrical Coil		[2]
4b	000005157	Solenoid Valve Coil Only - 230V/50-60 Hz		
5	000015026	Expansion Valve		
6	8930279	Drier without Access Port - 0.375"		
7	8373149	Magni-Check Valve - 0.375"	2	
8	000014479	Coupling - Male - 1.17"-12		
8a	8360063	Coupling Mounting Flange for 1.17"-12		
9	000014478	Coupling - Male - 0.625"-18		
9a	8360053	Coupling Mounting Flange for 0.625"-18		
10		Receiver Mounting		
10a	000010965	Mounting Bracket - Receiver		
10b	000010968	Mounting Strap - Receiver		
10c	000010983	Support Bracket		
10d	000010967	Base - Water/RemoteCondenser		
10e	5202069	Screw - #10-24 x 0.5" HEX		

PART NOTES:

- [1] - Without Screen Danfoss
- [2] - With Screen

iT0750 Indigo NXT, JCT1200

iT0750 - Refrigeration Compartment – Water-cooled Components



iT0750 - Refrigeration Compartment – Water-cooled Components

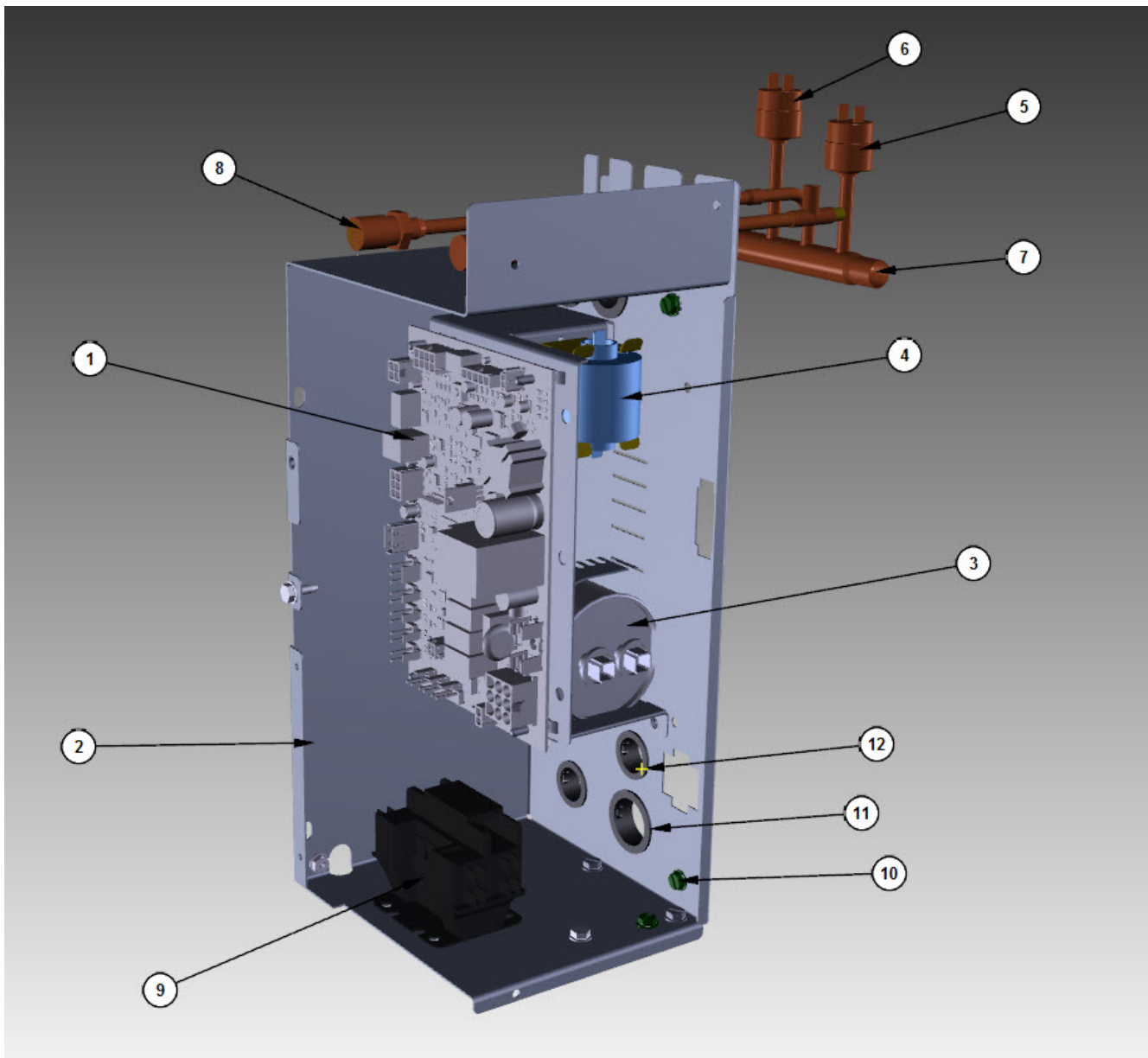
iT0750 Indigo NXT, JCT1200

iT0750 - Refrigeration Compartment – Water-cooled Components

#	PART #	DESCRIPTION	QTY	Note
1	8253039	Water-cooled Condenser		
2	000013475	Water Regulating Valve - 0.375"		
3	000008892	Receiver		
4	8930259	Drier without Access Port - 0.25"		
5	6061739	Back Coupling Panel - Water-cooled and Remote Air-cooled		
6	6000541	Receiver Strap		
6a	5202069	Screw - #10-24 x 0.5" HEX		
7	5002249	Elbow - 0.5" MF x 0.375" MPT		
8	5003883	Flare Nut - 0.5"		
8b	5573419	Washer		
9	8332033	Water Coupling		
10	000010604	Mounting Base - Water Condenser or Receiver		
10a	5202069	Screw - #10-24 x 0.5" HEX		
11	8706083	Female Wing Adapter - Brass - 0.5"		

iT0750 Indigo NXT, JCT1200

iT0750 - Control Box



iT0750 Indigo NXT, JCT1200

iT0750 - Control Box

#	PART #	DESCRIPTION	QTY	Note
1	000015208	Control Board		
1a	000015009	Ceramic Fuse - 6.3A		
2	000013818	Control Box		
2a	000012138	Control Box Cover		
2b	000007564	Control Board Mounting Bracket		
2c	4302253	Control Board Mounting Supports		
3		Compressor Run Capacitor		
3a	000010717	Run Capacitor - 230V/60 Hz/1 Ph		[1]
3b	2010133	Run Capacitor - 50 Hz		[2]
3c	000015624	Run Capacitor - 115-230V/50-60 Hz		[3]
3c	6021601	Capacitor Mounting Strap		
4	000014323	PTCR - 12A		[4]
4a	8505023	PTCR Mounting Bracket		
5	000013576	High Pressure Cut-out 450-600 psig		
6	000013531	Fan Cycling Control - 335-275 psig		
7	000011170	Manifold Strainer		
7a	6058571	Bracket - Access Valves/Manifold Strainer		
7b	000010699	Grommet - Manifold Strainer		
8	8373263	Access Valve - 7.25" L		
8a	7626843	Valve Cores		
8b	000012264	Refrigeration Service Valve Assembly - 0.3125"		
9		Contactactor		
9a	2009089	Contactactor - 208-230V/50-60 Hz/1 Ph		[5]
9b	2006599	Contactactor - 230V/50-60 Hz/1 Ph		[6]
9c	2006619	Contactactor - 230V/60 Hz/3 Ph		
10	5202169	Screw - #10-24 x 0.5" Ground		
10a	5573209	Star Washer		
11	2500019	Bushing - 1.187"		
12	2501409	Bushing - 0.875"		
13	5202069	Screw - #10-24 x 0.5" HEX		
13a	5573209	Star Washer		
14		Control Box Wiring Harness		
14a	000007179	Control Box Wiring Harness - 230V/60 Hz/1 Ph		
14b	000007180	Control Box Wiring Harness - 230V/50 Hz/1 Ph		
15	000011182	Wiring Harness - Compressor - Samsung		
15a	2008263	Wiring Harness - Compressor - 3 Ph		
16		Compressor Compartment Wiring Harness		
16a	000007185	Wiring Harness - Compressor Compartment - Air-cooled		
16b	000007177	Wiring Harness - Compressor Compartment - Water-cooled		
16c	000017610	Wiring Harness - Compressor Compartment - Remote Air-cooled		
17	000012569	Electronic Noise Filter - Korea		
17a	000005500	Electrical Noise Filter Wiring Harness		
17b	000011505	Terminal Cover		
17c	000011506	Terminal Cover Gasket		
18	000014349	Overload Protector		[1]

iT0750 - Control Box

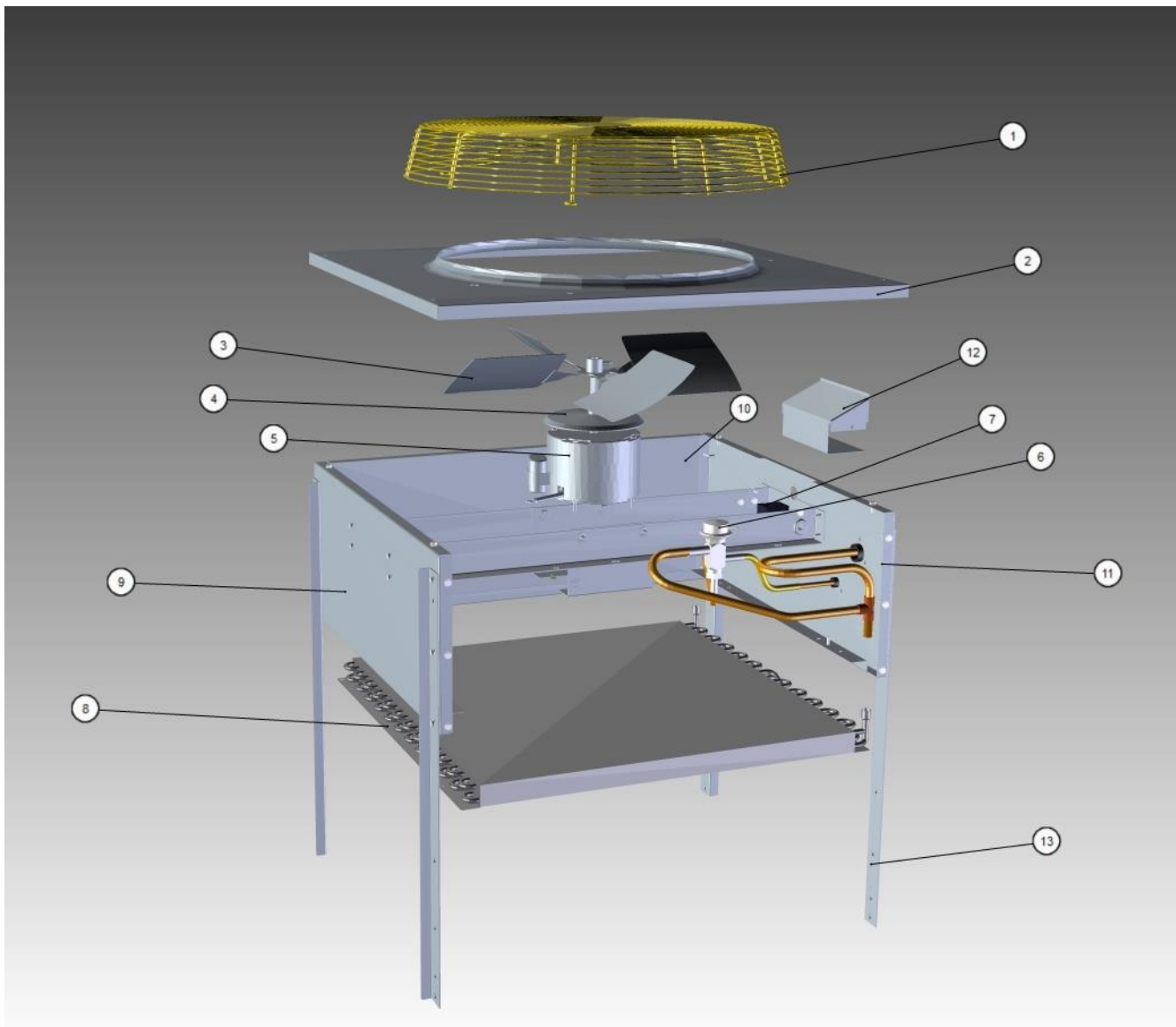
iT0750 Indigo NXT, JCT1200

iT0750 - Control Box

#	PART #	DESCRIPTION	QTY	Note
PART NOTES:				
[1]	-	All Models - 60 Hz		
[2]	-	Air Water Models - 50 Hz		
[3]	-	Remote Models - 50 Hz		
[4]	-	Air-cooled Water-cooled Models		
[5]	-	Air Water Models		
[6]	-	Remote Models		

iT0750 Indigo NXT, JCT1200

JCT1200 Remote Condenser



JCT1200 Remote Condenser

iT0750 Indigo NXT, JCT1200

JCT1200 Remote Condenser

#	PART #	DESCRIPTION	QTY	Note
1	3400643	Fan Guard		
2	6017751	Top Cover		
3	2416113	Fan Blade		
4	2415053	Rain Slinger		
5	7629413	Fan Motor - 208-230V/50-60 Hz/1 Ph		
5a	000010947	Fan Motor Mounting Bracket - Support		
5b	000010917	Fan Motor Mounting Bracket and Bottom Bracket for Legs		
6	000008870	Head Pressure Control Valve - 300 PSI		
7	000008040	Terminal Block - 3 Pole		
8	8850629	Air Condenser		[1]
8a	8850627	Air Condenser - Coated		
9	000000607	Panel - Front		
10	000010865	Panel - Side		
11	000000608	Panel - Rear		
12	6017761	Electrical Box Cover		
13	000010873	Legs		[2]
13a	000010917	Fan Motor Mounting Bracket and Bottom Bracket for Legs		
13b	5202169	Screw - #10-24 x 0.5" Ground		
14	5035659	Fan Motor Mounting Screw		
14a	5573099	Mounting - Flat Washer		
14b	5573139	Lockwasher		
14c	5429759	Hex Nut		
15	5033459	Screw - 0.25"-20 x 0.625"		
15a	5573049	Flat WasherMounting -		
15b	5545119	Mounting - Lock Washer		
15c	5429529	Mounting - Hexnut		
16	5202069	Screw - #10-24 x 0.5" HEX		
17	2512033	Strain Relief Bushing		
18	2502189	Bushing - 0.625"		
19	5573209	Star Washer		
20	8360343	Coupling - Male - 0.625"-18		
20a	8360053	Coupling Mounting Flange for 0.625"-18		
21	8360353	Coupling - Male - 1.17"-12		
21a	8360063	Coupling Mounting Flange for 1.17"-12		
22	K00129	Female Line Set Coupling Kit		
23	7108369	Cartoning		

PART NOTES:

- [1] - Includes flush-cop bushing
- [2] - Sold Individually

JCT1200 Remote Condenser