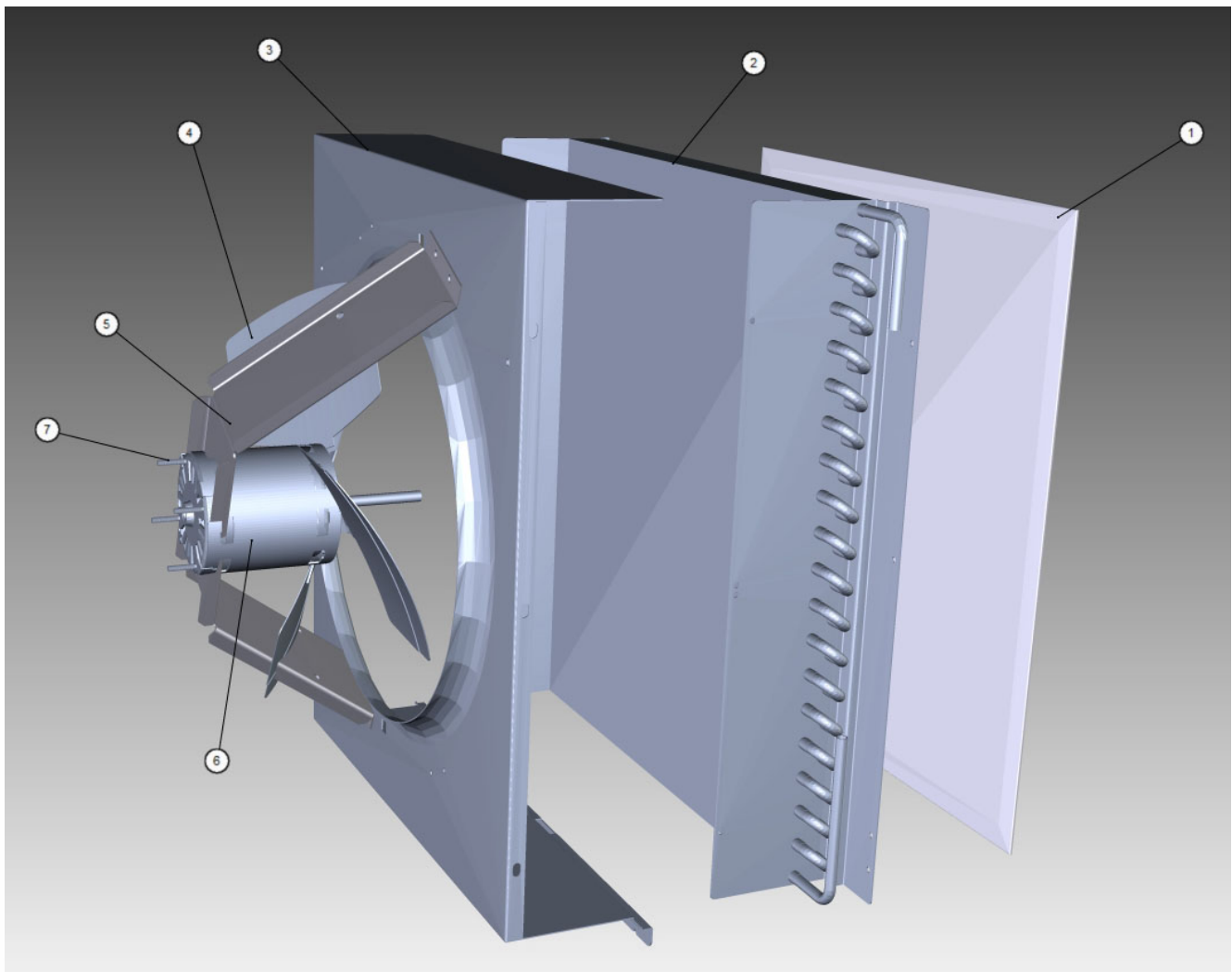


K0500

K0500 Refrigeration Compartment - Air-cooled Components



K0500 Refrigeration Compartment - Air-cooled Components

K0500 Air-cooled

Manitowoc

K0500

K0500 Refrigeration Compartment - Air-cooled Components

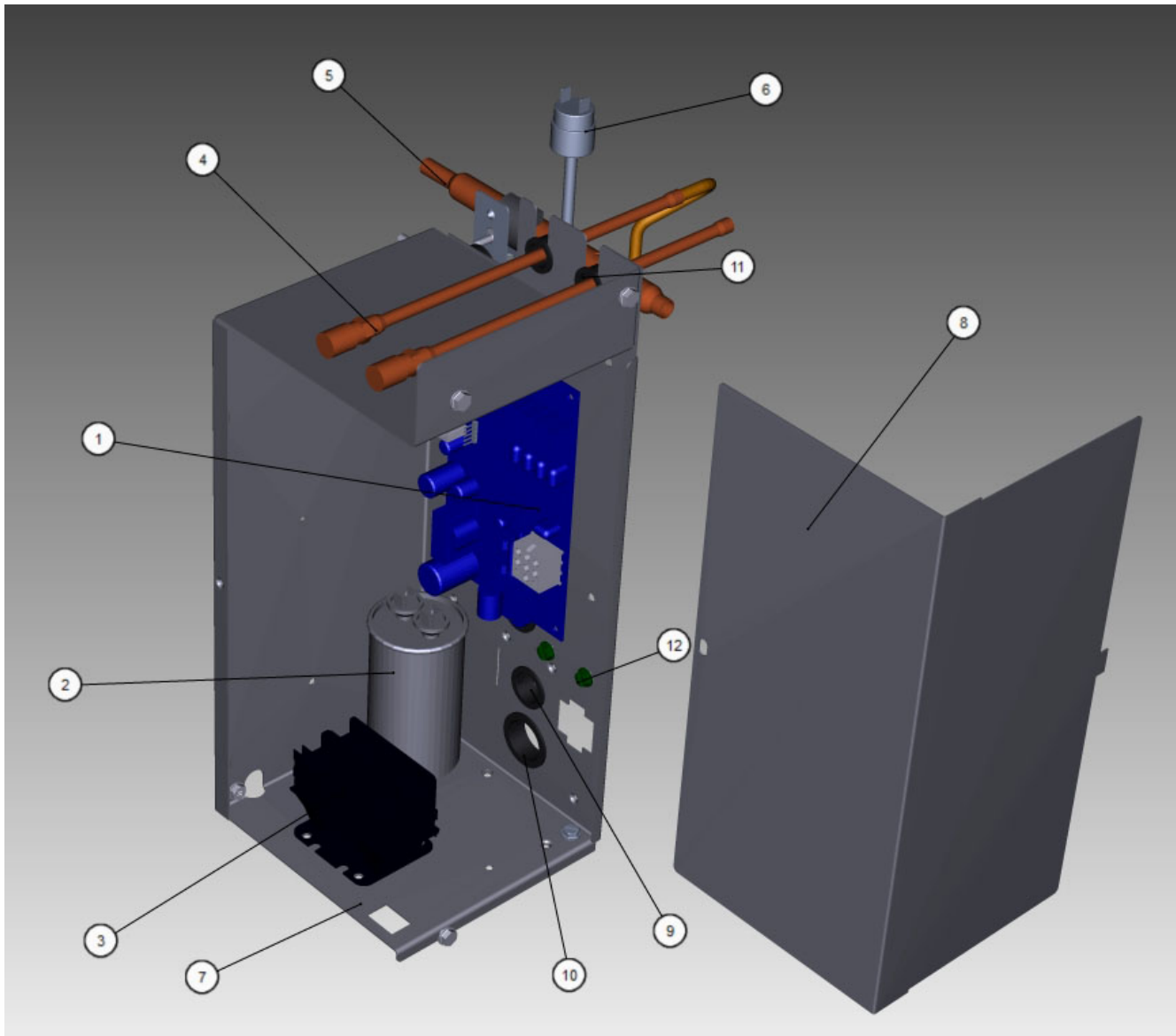
#	PART #	DESCRIPTION	QTY	Note
1	3005569	Air Filter - 14.29" x 16.94"		
2	000008850	Air Condenser		
3	000002484	Fan Shroud		
4	2416203	Fan Blade		
5	000010977	Fan Motor Bracket		
6		Fan Motor		
6a	2412929	Fan Motor - 115V/60 Hz/1 Ph		[1]
6b	2412939	Fan Motor - 208-230V/50-60 Hz		[2]
7		Fan Motor Mounting		
7a	5033589	Screw		
7b	000000936	Mounting - NutMounting -		
8	5202069	Screw - #10-24 x 0.5" HEX		
9	000013531	Fan Cycling Control - 335-275 psig		

PART NOTES:

- [1] - Includes Nuts
- [2] - Includes Nuts.

K0500

K0500 Control Box



K0500 Control Box

K0500

K0500 Control Box

#	PART #	DESCRIPTION	QTY	Note
1	000015302	Control Board Assembly		[1]
1	040005242	Control Board - USE UP		
1a	000015010	Fuse - 3.15A		
1b	4302253	Control Board Mounting Supports		
2		Run Capacitor - See Note for Usage		
2a	000005488	Run Capacitor - 115-230V/50-60 Hz/1 Ph		[2]
2b	000011640	Run Capacitor - 230V/50-60 Hz/1 Ph		
2c	000010711	Bracket - Run Capacitor		
3		Contactor		
3a	2006589	Contactor - 115V/60 Hz/1 Ph		
3b	2006599	Contactor - 230V/50-60 Hz/1 Ph		
4	8373263	Access Valve - 7.25" L		
4a	7626843	Valve Cores		
5	000011170	Manifold Strainer		
5a	6058571	Bracket - Access Valves/Manifold Strainer		
6	000013576	High Pressure Cut-out 450-600 psig		
7	000010617	Control Box		
8	000012138	Control Box Cover		
9	2501409	Bushing - 0.875"		
10	2500019	Bushing - 1.187"		
11	2502189	Bushing - 0.625"		
12	5202169	Screw - #10-24 x 0.5" Ground		
7	000013531	Fan Cycling Control - 335-275 psig		
14	2007939	Toggle Switch		
15		Wiring Harness		
15a	000010264	Control Box Wiring Harness - 115V/60 Hz/1 Ph		
	000013969	Control Box Wiring Harness - 115V/60 Hz/1 Ph		
15b	000010265	Control Box Wiring Harness - 230V/60 Hz/1 Ph		
	000013971	Control Box Wiring Harness - 230V/60 Hz/1 Ph		
15c	000010599	Control Box Wiring Harness - 230V/50 Hz/1 Ph		
	000013970	Control Box Wiring Harness - 230V/50 Hz/1 Ph		
15d	000011182	Wiring Harness - Compressor - Samsung		
15e	000010724	Wiring Harness - Toggle Switch		
15f	000010511	Wiring Harness - Float Switch to Control Box		
15g	000007185	Wiring Harness - Compressor Compartment - Air-cooled		
15h	000007177	Wiring Harness - Compressor Compartment - Water-cooled		
16	2006143	Terminal Block - 50 Hz - 3 Pole		[3]
17	000014323	PTCR - 12A		[4]

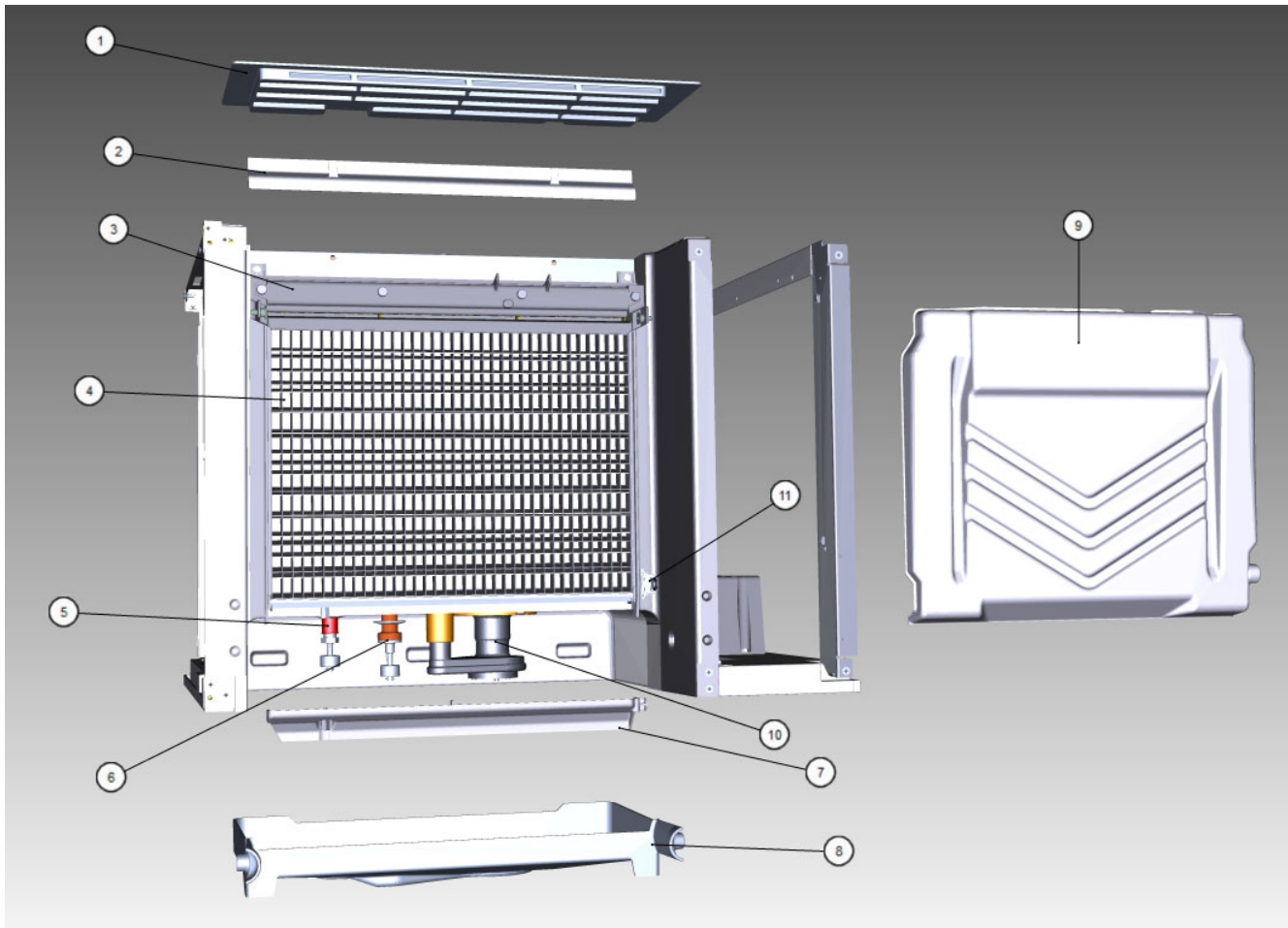
PART NOTES:

- [1] - Includes board and instructions.
- [2] - 115V/60 Hz
- [3] - 50 Hz Only
- [4] - Used on Models After May 2017

K0500 Control Box

K0500

K0500 Evaporator Compartment



K0500 Evaporator Compartment

K0500 Evap Comp

Manitowoc

K0500

K0500 Evaporator Compartment

#	PART #	DESCRIPTION	QTY	Note
1	00009055	Foodzone Seal Panel - 30"		[1]
2	4008469	Evaporator Top Filler Panel		[2]
2a	5202099	Screw - #10-24 x 0.5" PHIL		
3	7602193	Water Distribution Tube - 30"		
3a	5004799	Thumbscrew SS - #8-32 x 0.375"		
3b	5004629	O-Ring - 0.125" ID		
4		Evaporator Assembly		
4a	7602839	Evaporator - Dice Cube		
4b	7602849	Evaporator - Half Dice Cube		
4c	5004619	Screw - #12-16 x 0.687"		
5	000012651	Ice Thickness Float		
5a	000010630	Bracket - Ice Thickness Float		
6	000012649	Harvest Float		
6a	000010818	Bracket - Harvest Float		
7	7602213	Water Diverter - 30" Models		
7a	5305123	Thumbscrew SS - #8-32 x 0.44"		
8	000010828	Water Trough - 30"		
9	4010979	Water Curtain		
10		Water Pump - See Note for Usage		
10a	8251129	Water Pump - 115V/60 Hz		[3]
10b	8252109	Water Pump - 230V/50-60 Hz		[4]
10c	000010244	Water Pump Mount		
10d	5004659	Water Pump Base O-Ring - 4.00" ID		
10e	5004679	Water Pump Outlet O-Ring - 0.875" ID		
11	000010510	Magnetic Bin Switch		
12	7602203	Evaporator Top Frame Assembly - 30"		[5]
13	4009613	Evaporator Bottom Frame Assembly		
13a	5429139	Hex Nut - #8-32 Brass		

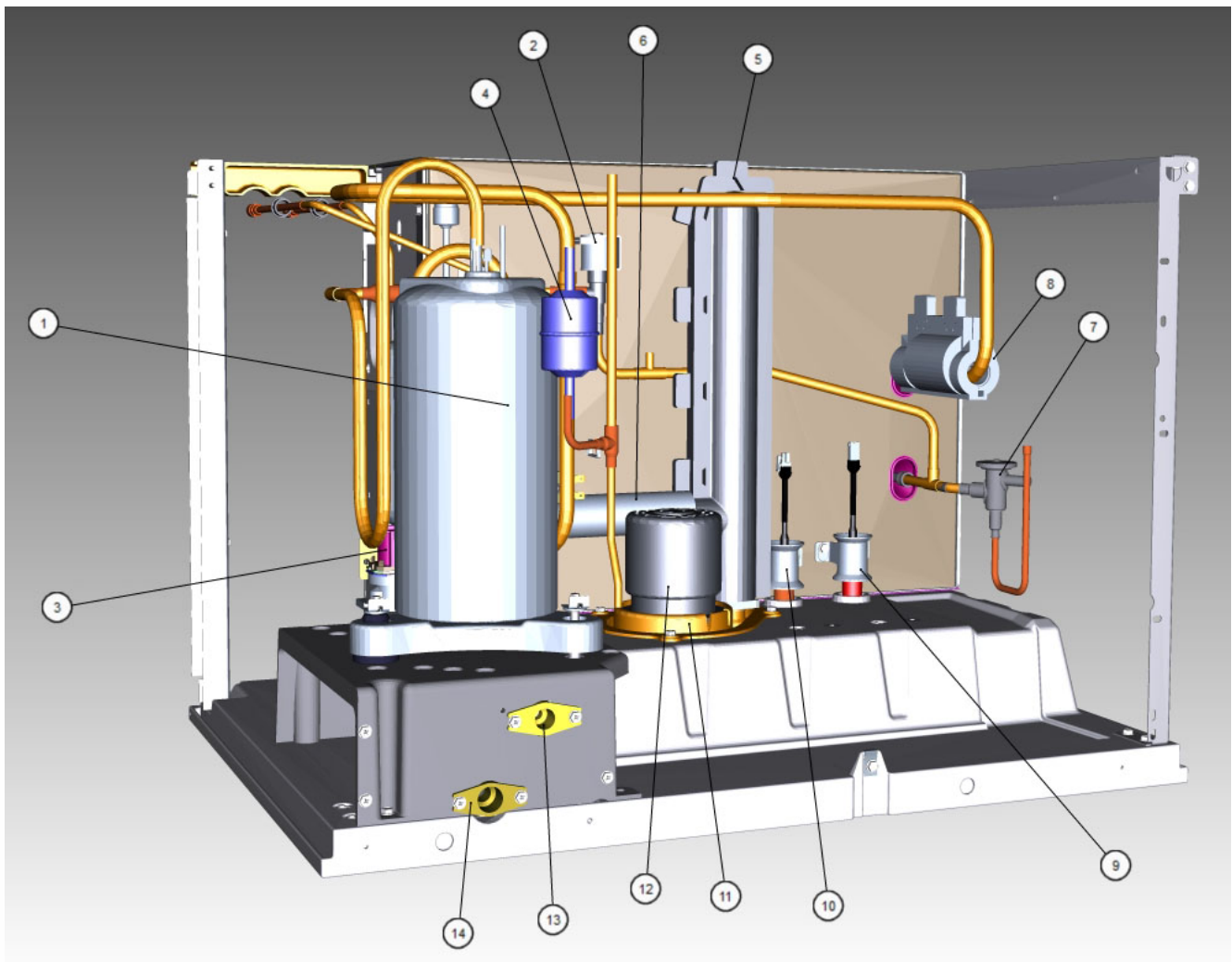
PART NOTES:

- [1] - Snaps into Place
- [2] - Includes Cover and Instructions
- [3] - Includes o-rings.
- [4] - Includes o-rings.
230V/50 Hz
- [5] - Includes top frame disks and hex nuts.

K0500 Evaporator Compartment

K0500

K0500 Refrigeration Compartment - Common Components



K0500 Refrigeration Compartment - Common Components

K0500 Refrigeration Compartment

Manitowoc

K0500

K0500 Refrigeration Compartment - Common Components

#	PART #	DESCRIPTION	QTY	Note
1		Compressor		
1a	000010462	Compressor - Samsung - 115V/60 Hz/1 Ph		
1b	000011145	Overload Protector - 115V/60 Hz/1 Ph		
1c	000010464	Compressor - Samsung - 230V/50 Hz/1 Ph		
2		Harvest Valve		
2a	000015043	Solenoid Valve 0.375" x 0.375" Including 115V/60 Hz Electrical Coil		[1]
2b	000005156	Solenoid Valve Coil Only - 115V/60 Hz		
2c	000015042	Solenoid Valve 0.375" x 0.375" Including 208-230V/50-60 Hz Electrical Coil		[1]
2d	000005157	Solenoid Valve Coil Only - 230V/50-60 Hz		
3		Water Dump Valve		
3a	000014062	Water Dump Valve - 115V/60 Hz		
3b	000014063	Water Dump Valve - 208-230V/50-60 Hz		
3c	6058459	Mounting Bracket - Water Dump Valve		
3d	4420383	Clear Tubing - 0.625" ID		
4	8930259	Drier without Access Port - 0.25"		
5,6	000015402	Insulated Tube		
7	000012224	Expansion Valve - Danfoss		
7a	000012443	Valve Insulation Boot - Body - Danfoss		
8	000002719	Valve Insulation Boot - Bulb - Danfoss		
9	000012651	Ice Thickness Float		
9a	000010630	Bracket - Ice Thickness Float		
10	000012649	Harvest Float		
10a	000010818	Bracket - Harvest Float		
11	000010244	Water Pump Mount		
12		Water Pump		
12a	8251129	Water Pump - 115V/60 Hz		[2]
12b	8252109	Water Pump - 230V/50-60 Hz		[2]
13	8706093	Female Wing Adapter - Brass - 0.375"		[3]
14	000005423	Female Wing Adapter - 0.5"		
15		Water Inlet Valve		
15a	000009123	Water Inlet Valve - 115V/60 Hz/1 Ph		[4]
15b	000009122	Water Inlet Valve - 208-230V/50-60 Hz		[4]
15c	4420291	Tygon Tube - 0.25" OD		
15d	4010439	Tubing - Water Inlet Valve		
16	5650609	Snap Clamp - 1.0" ID		
17	5650709	Snap Clamp - 0.8" x 0.9" ID		
18	000001382	Vinyl Tubing 0.625" ID		
18a	6038831	Insulation - 0.88" ID x 0.25" W x 13.5" L		
19	1360961	Male Connector - 0.375"		
20	5650529	Clamp - Expansion Valve Bulb		
21	3000833	Strap - Expansion Valve Bulb - 0.375"		
22	5202069	Screw - #10-24 x 0.5" HEX		
23	000008346	Compressor Base		
24	000011505	Terminal Cover		
24a	000011506	Terminal Cover Gasket		

K0500 Refrigeration Compartment - Common Components

K0500

K0500 Refrigeration Compartment - Common Components

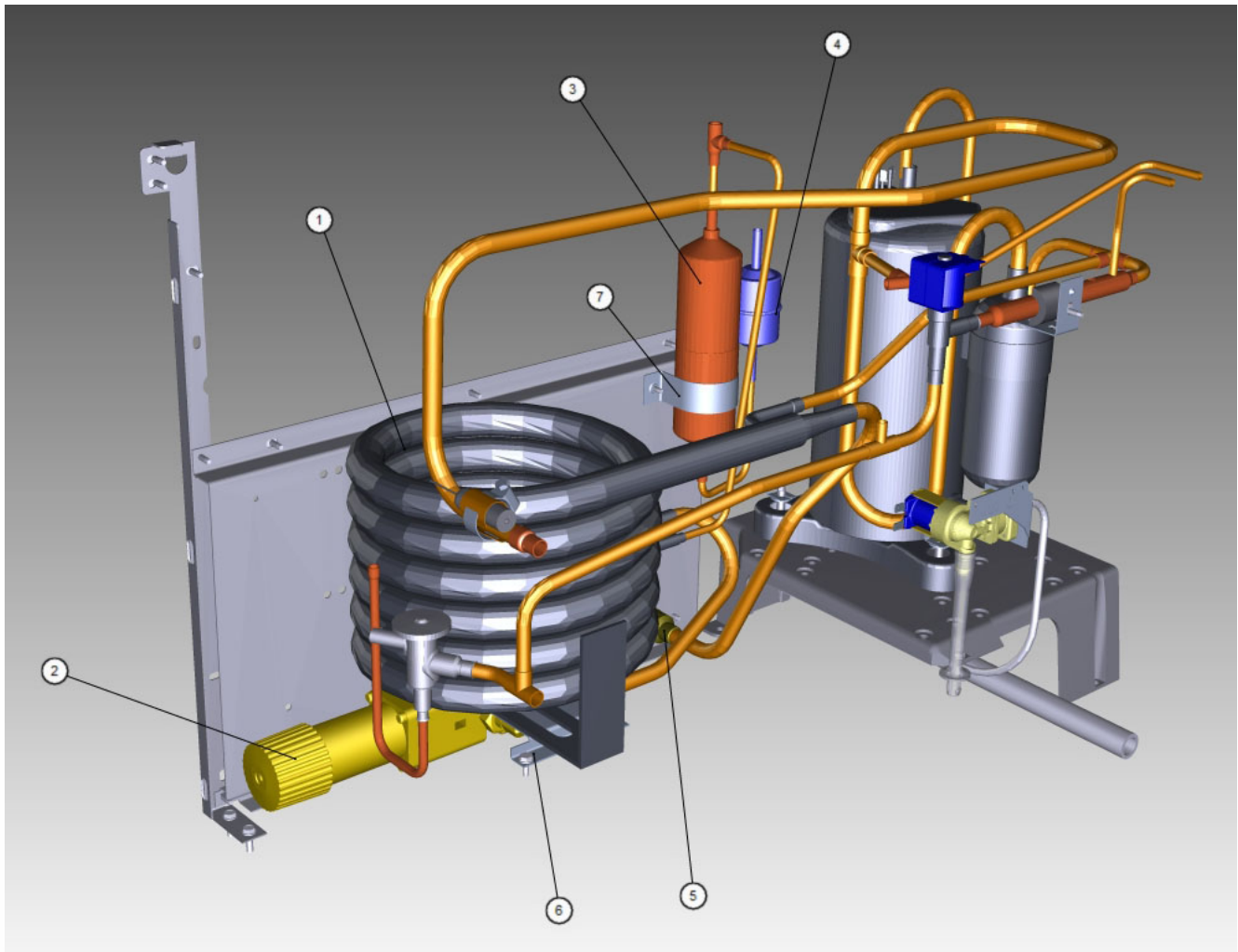
#	PART #	DESCRIPTION	QTY	Note
24b	000010854	Terminal Cover Nut		

PART NOTES:

- [1] - With Screen
- [2] - Includes o-rings.
- [3] - Brass
-
-
- If replacing a nylon fitting you must order 1360961
- [4] - 0.78 gpm
-
-
- Includes water valve inlet, bracket, screws, adapter, 0.375-18 NPT brass connector and locking clip.

K0500

K0500 Refrigeration Compartment - Water-cooled Components



K0500 Refrigeration Compartment - Water-cooled Components

K0500 Water-cooled

Manitowoc

K0500

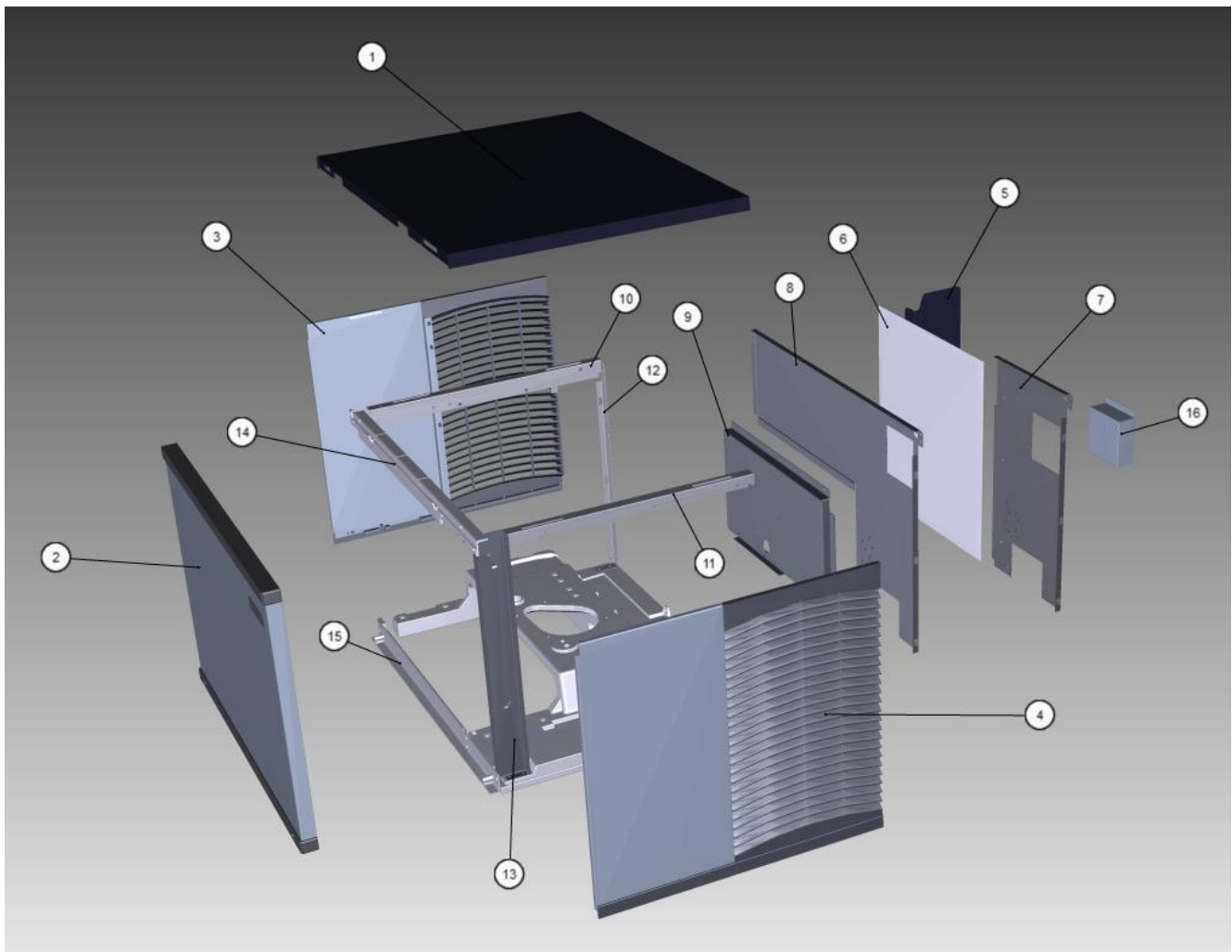
K0500 Refrigeration Compartment - Water-cooled Components

#	PART #	DESCRIPTION	QTY	Note
1	8865333	Water-cooled Condenser		
2	000013475	Water Regulating Valve - 0.375"		
3	000008892	Receiver		
4	8930259	Drier without Access Port - 0.25"		
5	8706083	Female Wing Adapter - Brass - 0.5"		
6	000010604	Mounting Base - Water Condenser or ReceiverWater Condenser Mounting		
7	6000541	Receiver Strap		
8	5002249	Elbow - 0.5" MF x 0.375" MPT		
9	5202069	Screw - #10-24 x 0.5" HEX		
10	5573419	Washer		
11	5003883	Flare Nut - 0.5"		

K0500 Refrigeration Compartment - Water-cooled Components

K0500

K0500 Panels



K0500 Panels

K0600 Panels

K0500

K0500 Panels

#	PART #	DESCRIPTION	QTY	Note
1	000010523	Top Cover		
2	000012139	Front Panel		
2a	000010600	Door - Drip Lip		
2b	000010293	Front Panel Mounting Brackets		
2c	000008023	Screw - #8-32 x 0.875"		
2d	000010294	Door Seal		
3	000011272	Left Side Panel		[1]
4	000011271	Right Side Panel		[2]
5	000007314	Air Baffle Assembly		
6	3005569	Air Filter - 14.29" x 16.94"		
7	000011086	Back Panel - Air-cooled		
8	000011092	Back Panel - Water-cooled and Remote Air-cooled		
9	000010603	Back Coupling Panel - Water-cooled/Remote		
10	6068649	Left Top Channel		
11	000011032	Right Top Channel		
12	000011100	Left Corner Post		
13	000011326	Right Corner Post		
14	000010269	Front Top Support		
15	000010268	Bottom Door Frame		
15a	000001127	Tapping Plate - Panel Hinge Screws		
16	6067289	Rear Connection Box		
16a	6067299	Cover - Rear Connection Box		
17	000012225	Cartoning		

PART NOTES:

- [1] - Includes panel louver, panel trim bottom, left side panel and dual lock-low profile fastener.
- [2] - Includes panel louver, panel trim bottom, right side panel and dual lock-low profile fastener.