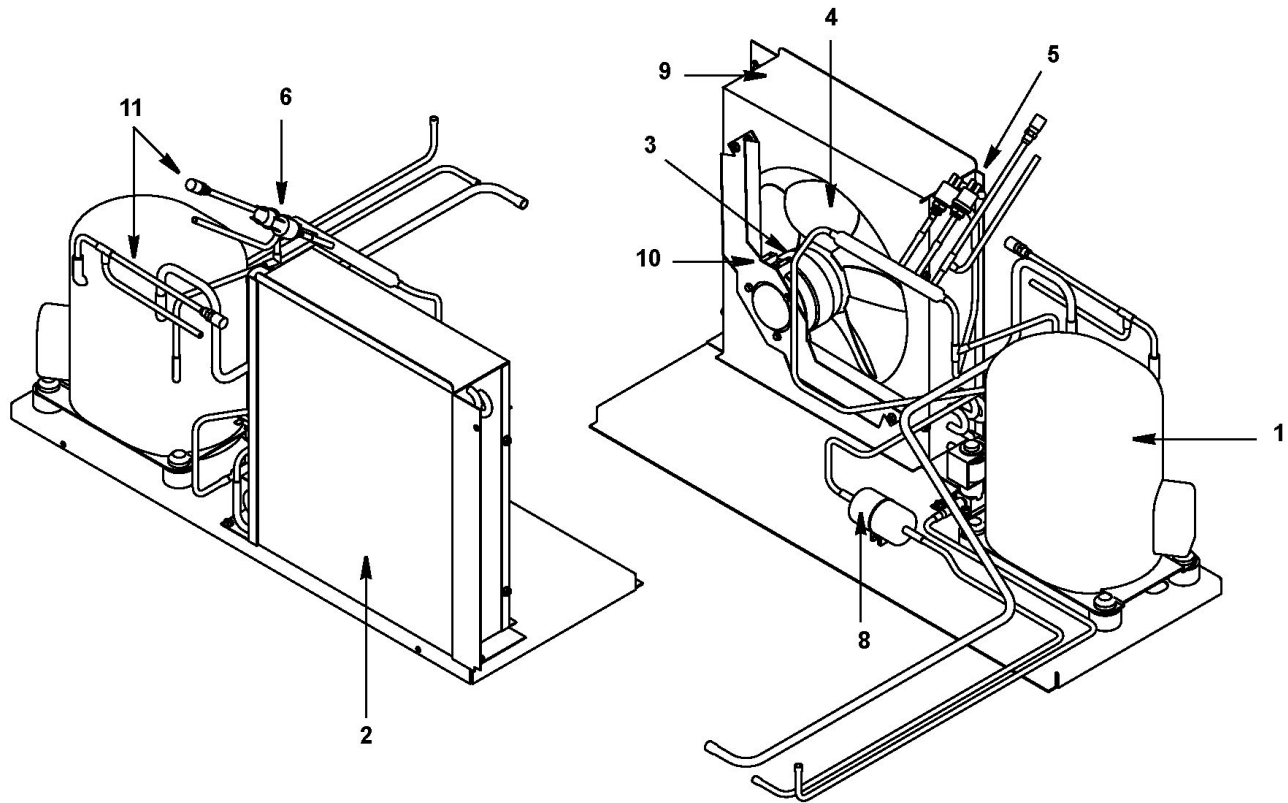


KF0250 UnderCounter

KF0250 Refrigeration Compartment - Air-cooled Components



KF0250 Refrigeration Compartment - Air-cooled Components

KF0250 Air-cooled Compartment

Manitowoc

KF0250 UnderCounter

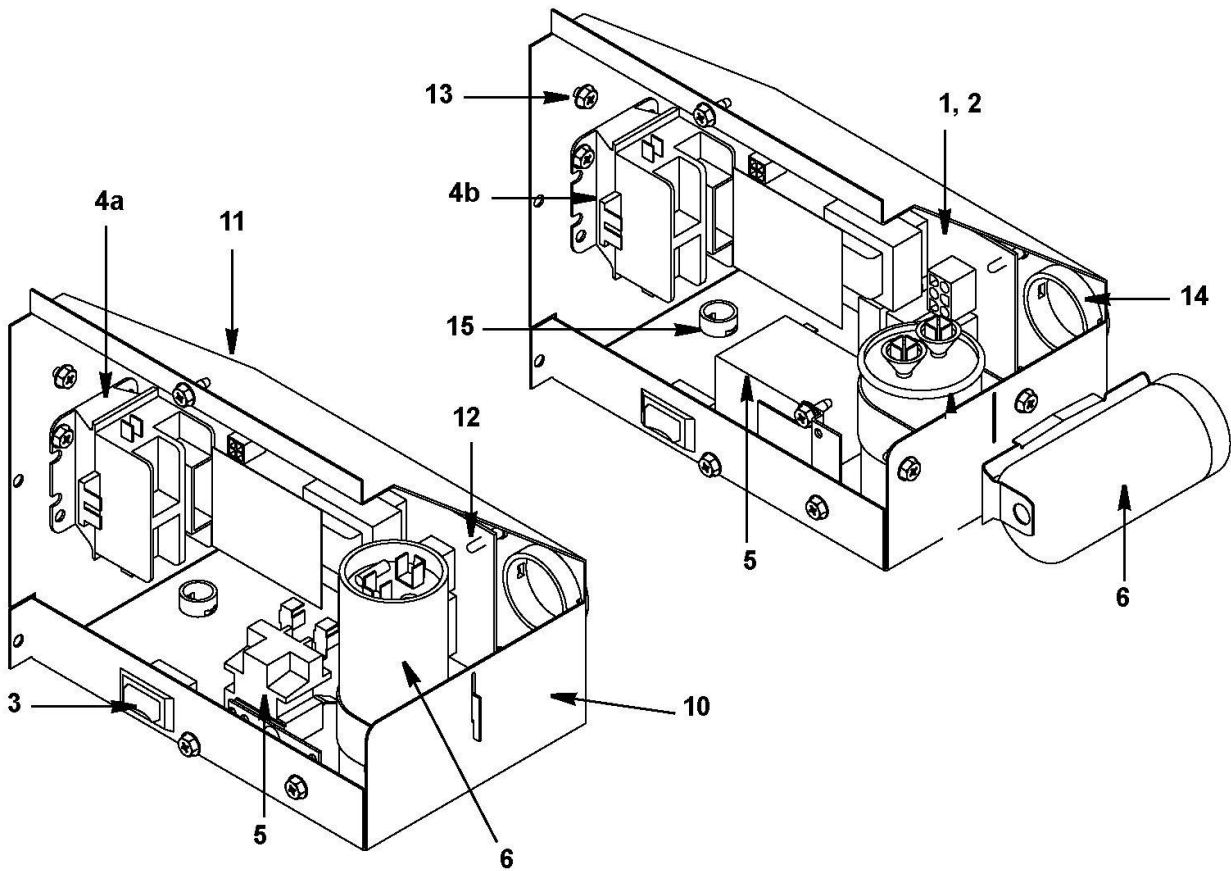
KF0250 Refrigeration Compartment - Air-cooled Components

#	PART #	DESCRIPTION	QTY	Note
2	8851383	Air Condenser		
3	040005737	Fan Motor - 115V/60 Hz		
3a	5005513	Screw - Hex Head - M4 x 0.7 mm		[1]
4	2416223	Fan Blade		
5	000013508	Fan Cycling Control - 200-250 psig		
6	000013579	High Pressure Cut-out - 300-450 psig		
7	040003921	Air Filter - 13.63" x 11.13"		[2]
7a	040004683	Bracket - Air Filter		
8	8930259	Drier without Access Port - 0.25"		
9	6034591	Fan Shroud		
10	000010922	Fan Motor Bracket		
10a	5202069	Screw - #10-24 x 0.5" HEX		
11	5475079	Speed Nut - 0.25" x 20		
12	8373253	Access Valve - 6.0" L		
12a	7626843	Valve Cores		

PART NOTES:

- [1] - Mounts Fan Motor to Bracket
- [2] - Includes air filter and filter bracket.

KF0250 Control Box



KF0250 Control Box

KF0250 Control Box

Manitowoc

KF0250 UnderCounter

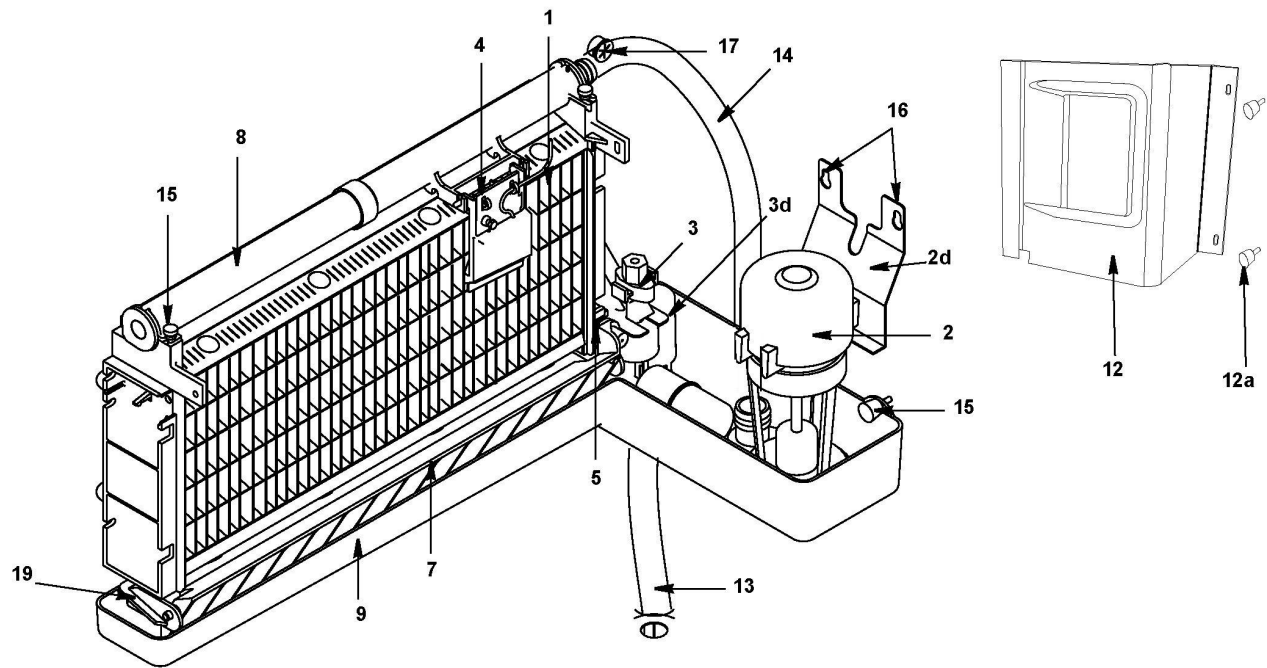
KF0250 Control Box

#	PART #	DESCRIPTION	QTY	Note
1	7629073	Control Board		
2	2511493	Fuse - 10A		
3	2301513	Toggle Switch		
3a	2032483	Wiring Harness - Toggle Switch		
4a	2006569	Contactor - 115V/60 Hz/1 Ph		
5	040005645	Relay		
6	040005642	Start Capacitor		
7	040005570	Wiring Harness - Air-cooled		
8	2007003	Wiring Harness - Ice Thickness Control Probe		
9	040001257	Power Cord - 115V/60 Hz		
10	040005266	Control Box		
11	040002357	Control Box Cover		
12	4302253	Control Board Mounting Supports		
13	5202329	Screw - #10-24 x 0.25" PHIL		
13a	5573209	Star Washer		
14	2500139	Bushing - 1.5"		
15	2502189	Bushing - 0.625"		
16	040005644	Overload		

KF0250 Control Box

KF0250 UnderCounter

KF0250 Evaporator Components



KF0250 Evaporator Components

KF0250 Evaporator Components

Manitowoc

KF0250 UnderCounter

KF0250 Evaporator Components

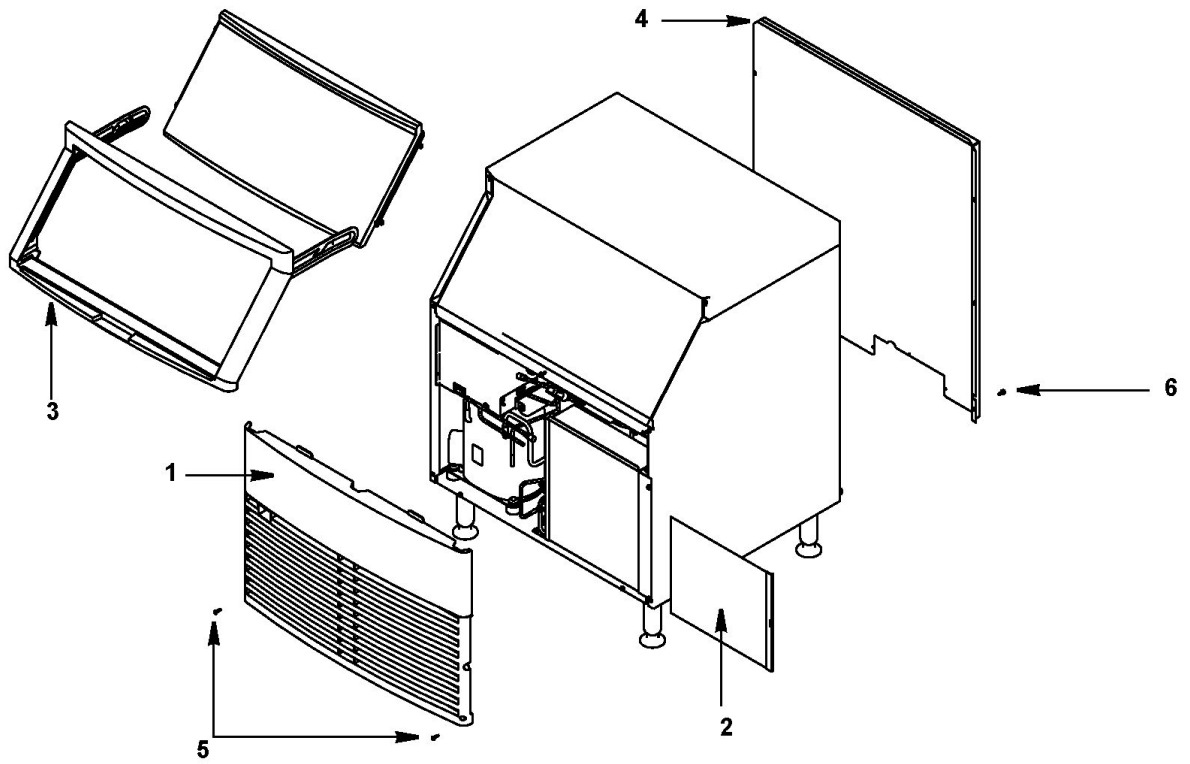
#	PART #	DESCRIPTION	QTY	Note
1		Evaporator Assembly		
1a	7629549	Evaporator - Regular Cube		
1b	7629559	Evaporator - Dice Cube		
1c	7629569	Evaporator - Half Dice Cube		
1d	040001379	Bottom Frame Plug		
2		Water Pump		
2a	7623063	Water Pump - 115V/60 Hz		
2b	7626013	Water Pump - 230V/50-60 Hz		
2c	040000945	Water Pump - 230V/50-60 Hz		
2d	040001514	Water Pump Mounting Plate		
3	8369049	Float Valve Assembly		
3a	8369069	Float Valve Screen		
3b	8369089	Float Valve Plunger		
3c	5650729	Compression Nut		
3d	7621403	Bracket		
4	7601603	Ice Thickness Control Probe Assembly w/14.0' Lead		
5	7601613	Magnetic Bin Switch		
6	7620543	Water Flow Clamp - Use on Regular Cube Evap. Only		
7	000011555	Ice Damper		
7a	7629093	Magnet and Cap		
8	040002531	Water Distribution Tube - UnderCounters		[1]
9	040001251	Water Trough		
10	4420291	Tygon Tube - 0.25" OD		
11	4302223	Siphon Cap		
12	000006754	Water Pump Cover		
12a	040001217	Thumbscrew - #8-32 x 0.625"		
13	040001219	Drain Tube		
14	040001234	Tubing		
15	5000013	Thumbscrew - #8-32 x 0.375"		
15	040001217	Thumbscrew - #8-32 x 0.625"		
16	5202069	Screw - #10-24 x 0.5" HEX		
17	2500169	Bushing - 0.91" OD x 0.44" ID		
18		Water Pump Lead		
18a	2078063	Water Pump Lead - 115V/60 Hz		
18b	040000847	Water Pump Lead - 208-230V/50-60 Hz		
19	040001766	Evaporator Frame Assembly		

PART NOTES:

[1] - Includes distribution assembly and o-rings.

KF0250 UnderCounter

KF0250 Panels



KF0250 UnderCounter

KF0250 Panels

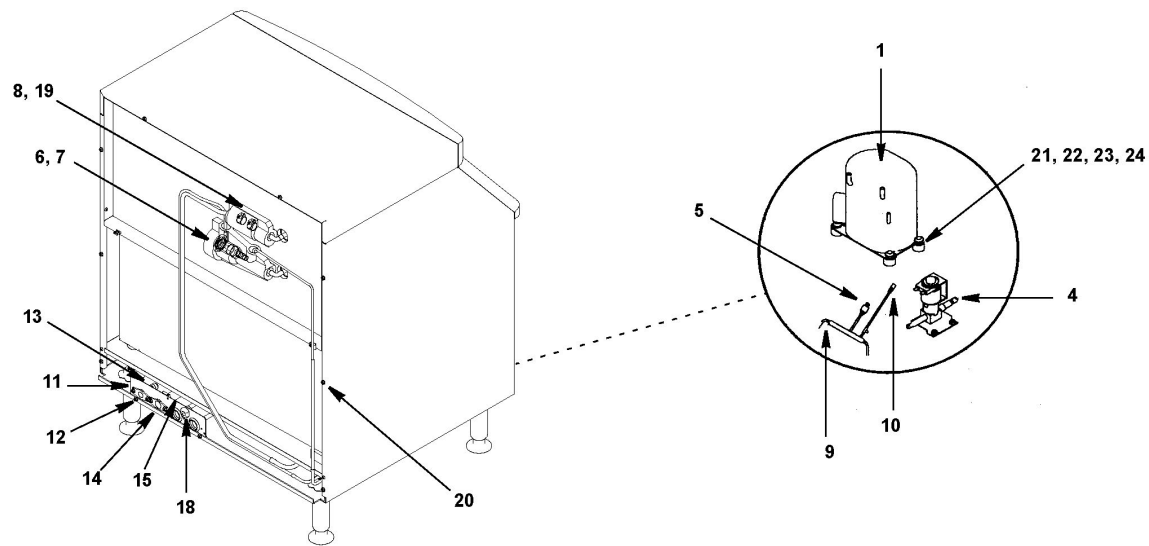
#	PART #	DESCRIPTION	QTY	Note
1	040003920	Front Panel Assembly		
2	040003921	Air Filter - 13.63" x 11.13"		[1]
2a	040004683	Bracket - Air Filter		
3	040003919	Bin Door & Door Frame Assembly		[2]
3a	040003918	Bin Door w/Pins		[3]
3b	040003917	Door Frame w/Screws		[4]
3c	040004688	Door Track Set - LH and RH		
3d	000006837	Door Pin Sleeve		
3e	000015104	Screw - #8-18 x 0.625" SSDoor Frame		
4	6034671	Back Panel, Upper		
5	5202239	Screws - #8 x 0.75"		[5]
5a	5474893	Tinnerman Clip - #8		
6	5202069	Screw - #10-24 x 0.5" HEX		
7	040004889	Ice Scoop - Standard - 32 ounces		
8	K00151	Legs - 6"		

PART NOTES:

- [1] - Includes air filter and filter bracket.
- [2] - Includes door track set left/right sub-assembly, door frame, screws, door assembly and sleeve door pin.
- [3] - Includes door assembly and sleeve door pin.
- [4] - Includes Door Tracks, frame bracket and screws.
- [5] - Pack of 10

KF0250 UnderCounter

KF0250 Refrigeration Compartment - Common Components



KF0250 Refrigeration Compartment - Common Components

KF0250 UnderCounter

KF0250 Refrigeration Compartment - Common Components

#	PART #	DESCRIPTION	QTY	Note
1	040005638	Compressor - Embraco - 115V/60 Hz/1 Ph		
1a	040005645	Relay		
1b	040005642	Start Capacitor		
1c	040005644	Overload		
4		Harvest Valve		
4a	040008541	Harvest Valve with Coil - 115V/60 Hz/1 Ph		
4a	040000101	Harvest Valve Coil Only -115V/60 Hz/1 Ph		
4b	040008540	Harvest Valve with Coil - 230V/50-60 Hz/1 Ph		
4b	040000103	Harvest Valve Coil Only - 230V/50-60 Hz/1 Ph		
4c	040000672	Bracket - Harvest Valve		
5	000013579	High Pressure Cut-out - 300-450 psig		
6	7602893	Expansion Valve		
7	040005366	Valve Insulation Boot - Body		
8	4007203	Valve Insulation Boot - Bulb		
9	040007601	Manifold Strainer		
10	8373253	Access Valve - 6.0" L		
10a	7626843	Valve Cores		
11	6034601	Coupling Panel - Water/Electrical		
12	8706093	Female Wing Adapter - Brass - 0.375"		[1]
13	1360961	Male Connector - 0.375"		
14	000005423	Female Wing Adapter - 0.5"		
15	4421463	Bin Drain Tubing		
16	5650649	Snap Clamp - 0.75" - Nylon		
17	4420291	Tygon Tube - 0.25" OD		
18	2502283	Strain Relief		
19	5650529	Clamp - Expansion Valve Bulb		
20	5202069	Screw - #10-24 x 0.5" HEX		
21	040005640	Mounting - Rubber Grommet		
22	5573179	Compressor Mounting Washer		
23	040005697	Compressor Mounting Pin		
24	040005641	Mounting - Sleeve		
25	040005572	Base - Compressor		
26	040002847	Terminal Cover		
27	040002848	Bracket - Overload		
28	040005643	Bracket - Capacitor		

PART NOTES:

[1] - Brass

If replacing a nylon fitting you must order 1360961