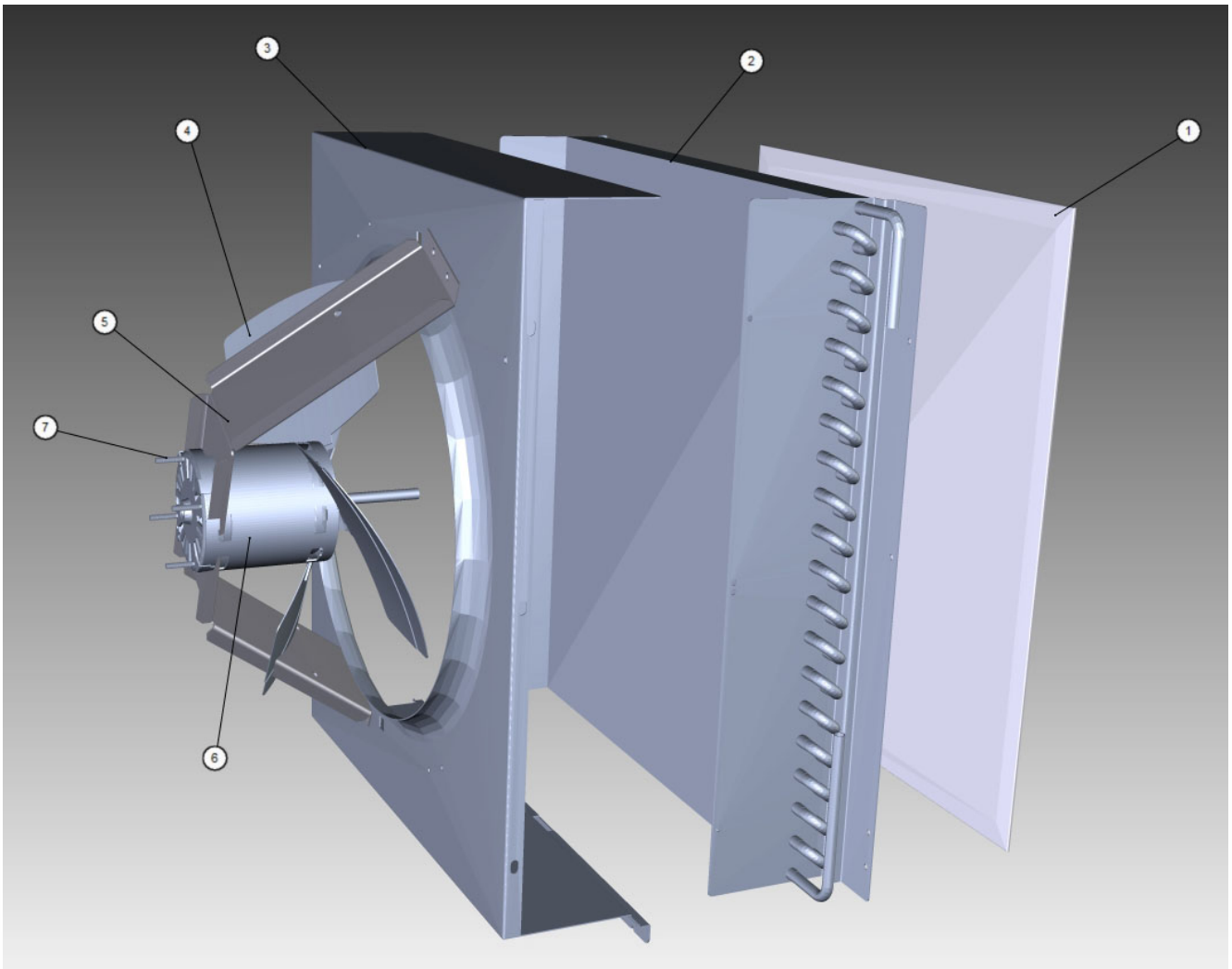


KT0700

KT0700 Refrigeration Compartment - Air-cooled Components



KT0700 Refrigeration Compartment - Air-cooled Components

KT0700 Air-cooled

Manitowoc

KT0700

KT0700 Refrigeration Compartment - Air-cooled Components

#	PART #	DESCRIPTION	QTY	Note
1	3005689	Air Filter - 18.88" x 17.19"		
2	000008868	Air Condenser		
3	000014016	Fan Shroud		
4	2416173	Fan Blade		
5	000014018	Fan Motor Bracket		
6		Fan Motor		
6a	2412929	Fan Motor - 115V/60 Hz/1 Ph		[1]
6b	2412939	Fan Motor - 208-230V/50-60 Hz		[2]
7		Fan Motor Mounting		
7a	000001524	Screw		
7b	5429559	Rubber Wellnut		
8	5429529	Mounting - Hexnut		
9	000013531	Fan Cycling Control - 335-275 psig		
10	000002764	Insulation - Manifold Tee to Condenser		
11	000007314	Air Baffle Assembly		

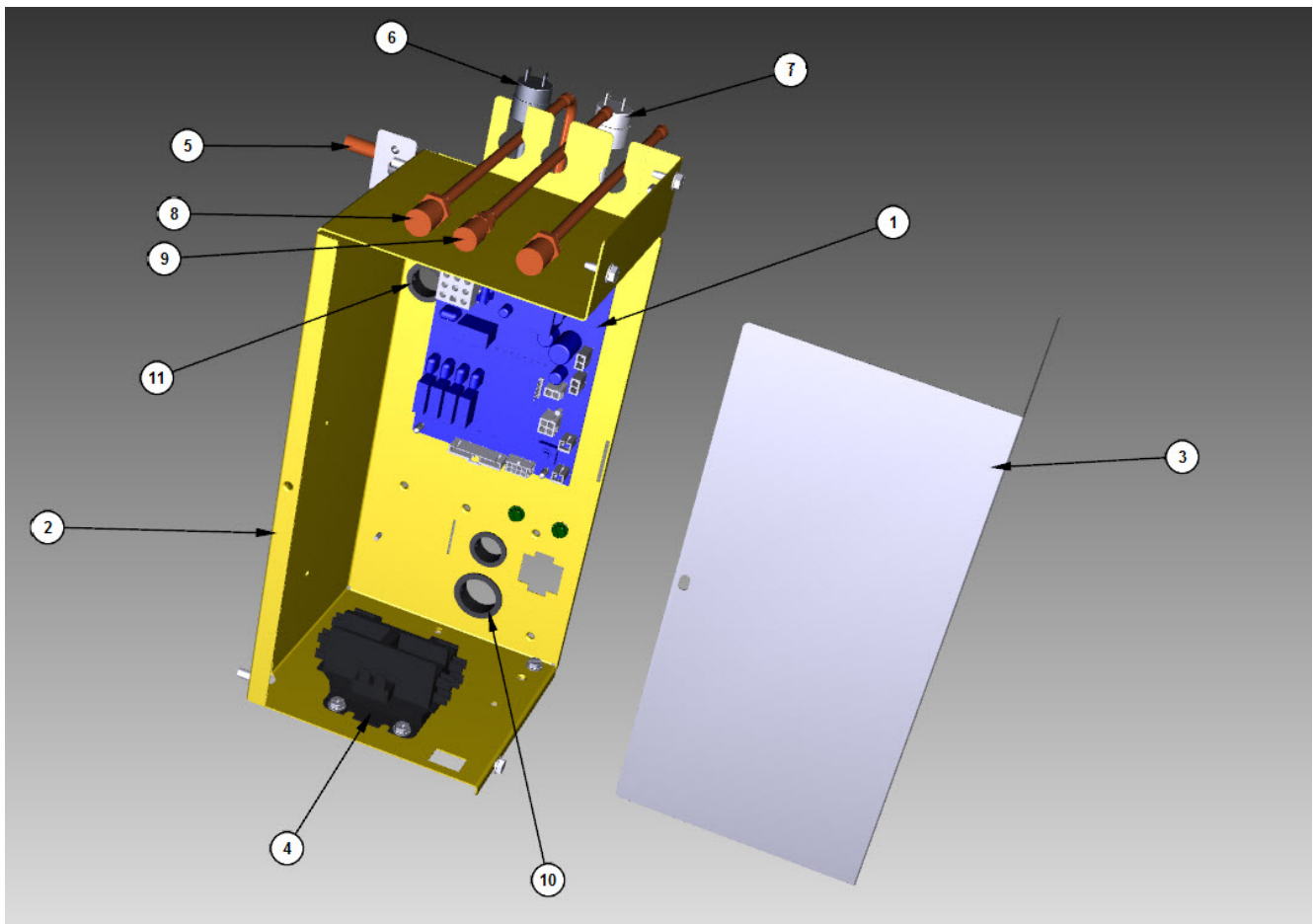
PART NOTES:

- [1] - Includes Nuts
- [2] - Includes Nuts.

KT0700 Refrigeration Compartment - Air-cooled Components

KT0700

KT0700 Control Box



KT0700 Control Box

KT0700 Control Box

KT0700

KT0700 Control Box

#	PART #	DESCRIPTION	QTY	Note
1	000015302	Control Board Assembly		[1]
1a	000015010	Fuse - 3.15A		
1b	4302253	Control Board Mounting Supports		
2	000013819	Control Box		
3	000012138	Control Box Cover		
4	2006599	Contact - 230V/50-60 Hz/1 Ph		
5	000011170	Manifold Strainer		
5a	6058571	Bracket - Access Valves/Manifold Strainer		
5b	000010699	Grommet - Manifold Strainer		
6	000013576	High Pressure Cut-out 450-600 psig		
7	000013531	Fan Cycling Control - 335-275 psig		
8	8373263	Access Valve - 7.25" L		
8a	7626843	Valve Cores		
9	000012264	Refrigeration Service Valve Assembly - 0.3125"		
10	2501409	Bushing - 0.875"		
11	2500019	Bushing - 1.187"		
11a	2502189	Bushing - 0.625"		
12		Run Capacitor - See Note for Usage		
12a	000000028	Run Capacitor - 115-230V/50-60 Hz/1 Ph		[2]
12b	2010133	Run Capacitor		[3]
12c	000010711	Bracket - Run Capacitor		
13	5202169	Screw - #10-24 x 0.5" Ground		
14	2007939	Toggle Switch		
15		Wiring Harness		
15a	000013971	Control Box Wiring Harness - 230V/60 Hz/1 Ph		
15b	000013970	Control Box Wiring Harness - 230V/50 Hz/1 Ph		
16	000011182	Wiring Harness - Compressor - Samsung		
17	000010724	Wiring Harness - Toggle Switch		
18	000010511	Wiring Harness - Float Switch to Control Box		
19	000007185	Wiring Harness - Compressor Compartment - Air-cooled		
20	000007177	Wiring Harness - Compressor Compartment - Water-cooled		
21	2006143	Terminal Block - 50 Hz - 3 Pole		[4]
22	000014323	PTCR - 12A		
22a	8505023	PTCR Mounting Bracket		
22b	5004129	Screw - #6 x 0.5"		
23	000014349	Overload Protector		
23a	000010853	Overload Protector - Bracket		

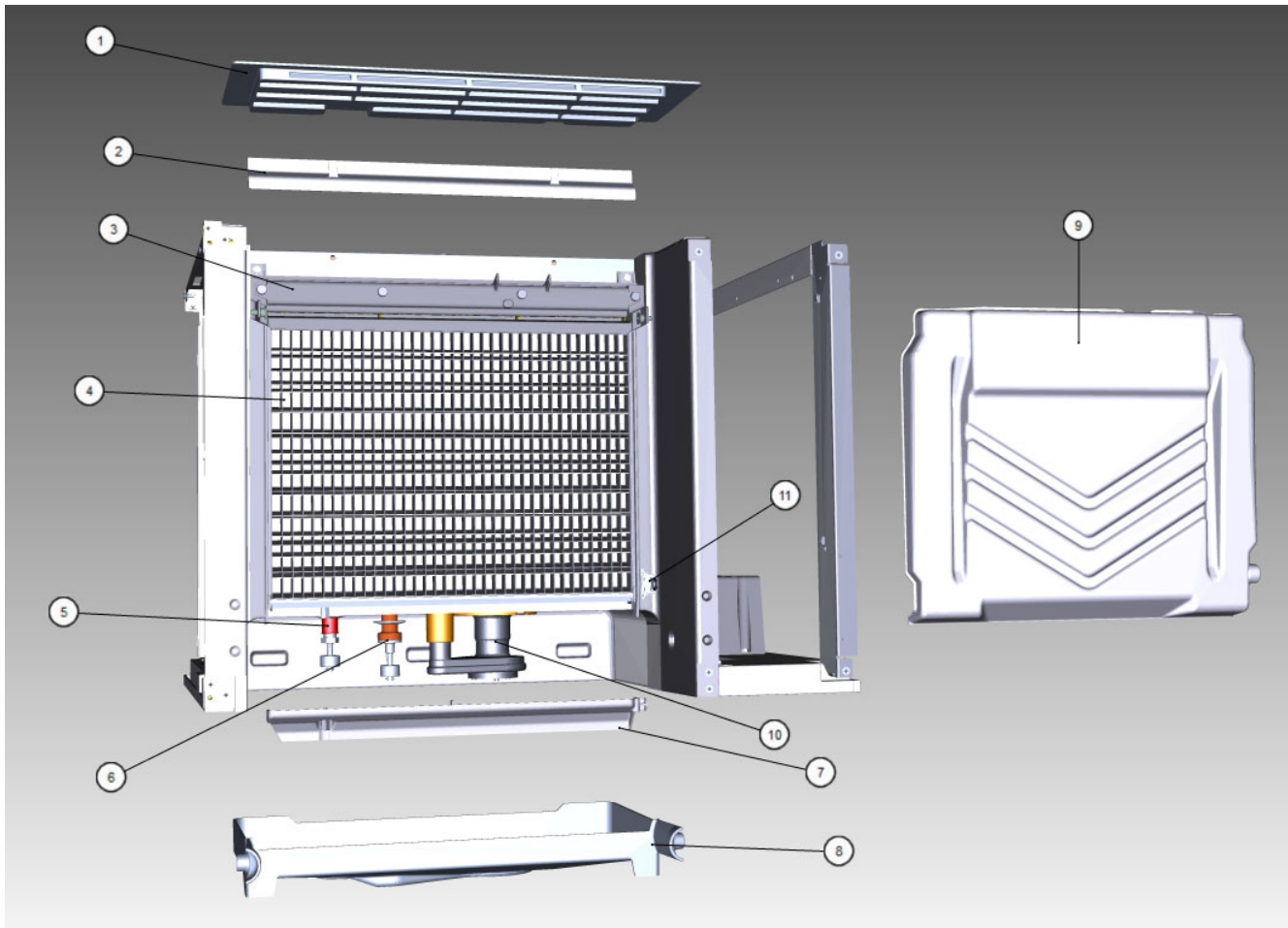
PART NOTES:

- [1] - Includes board and instructions.
- [2] - 230V/60 Hz
- [3] - 230V/50 Hz
- [4] - 50 Hz Only

KT0700 Control Box

KT0700

KT0700 Evaporator Compartment



KT0700 Evaporator Compartment

KT0700 Evap Comp

Manitowoc

KT0700

KT0700 Evaporator Compartment

#	PART #	DESCRIPTION	QTY	Note
1	000009055	Foodzone Seal Panel - 30"		[1]
2	4008469	Evaporator Top Filler Panel		[2]
2a	5202099	Screw - #10-24 x 0.5" PHIL		
3	7602193	Water Distribution Tube - 30"		
3a	5004799	Thumbscrew SS - #8-32 x 0.375"		
3b	5004649	O-Rings - 0.675"		
4		Evaporator Assembly		
4a	7602839	Evaporator - Dice Cube		
4b	7602849	Evaporator - Half Dice Cube		
4c	5004619	Screw - #12-16 x 0.687"		
5	000012651	Ice Thickness Float		
5a	000010630	Bracket - Ice Thickness Float		
6	000012649	Harvest Float		
6a	000010818	Bracket - Harvest Float		
7	7602213	Water Diverter - 30" Models		
7a	5305123	Thumbscrew SS - #8-32 x 0.44"		
8	000010828	Water Trough - 30"		
9	4010979	Water Curtain		
10		Water Pump - See Note for Usage		
10a	2007399	Water Pump - 230V/60 Hz		[3]
10b	8252109	Water Pump - 230V/50-60 Hz		[4]
10c	000010244	Water Pump Mount		
10d	5004659	Water Pump Base O-Ring - 4.00" ID		
10e	5004679	Water Pump Outlet O-Ring - 0.875" ID		
11	000010510	Magnetic Bin Switch		
12	7602203	Evaporator Top Frame Assembly - 30"		[5]
13	4009613	Evaporator Bottom Frame Assembly		
13a	5429139	Hex Nut - #8-32 Brass		

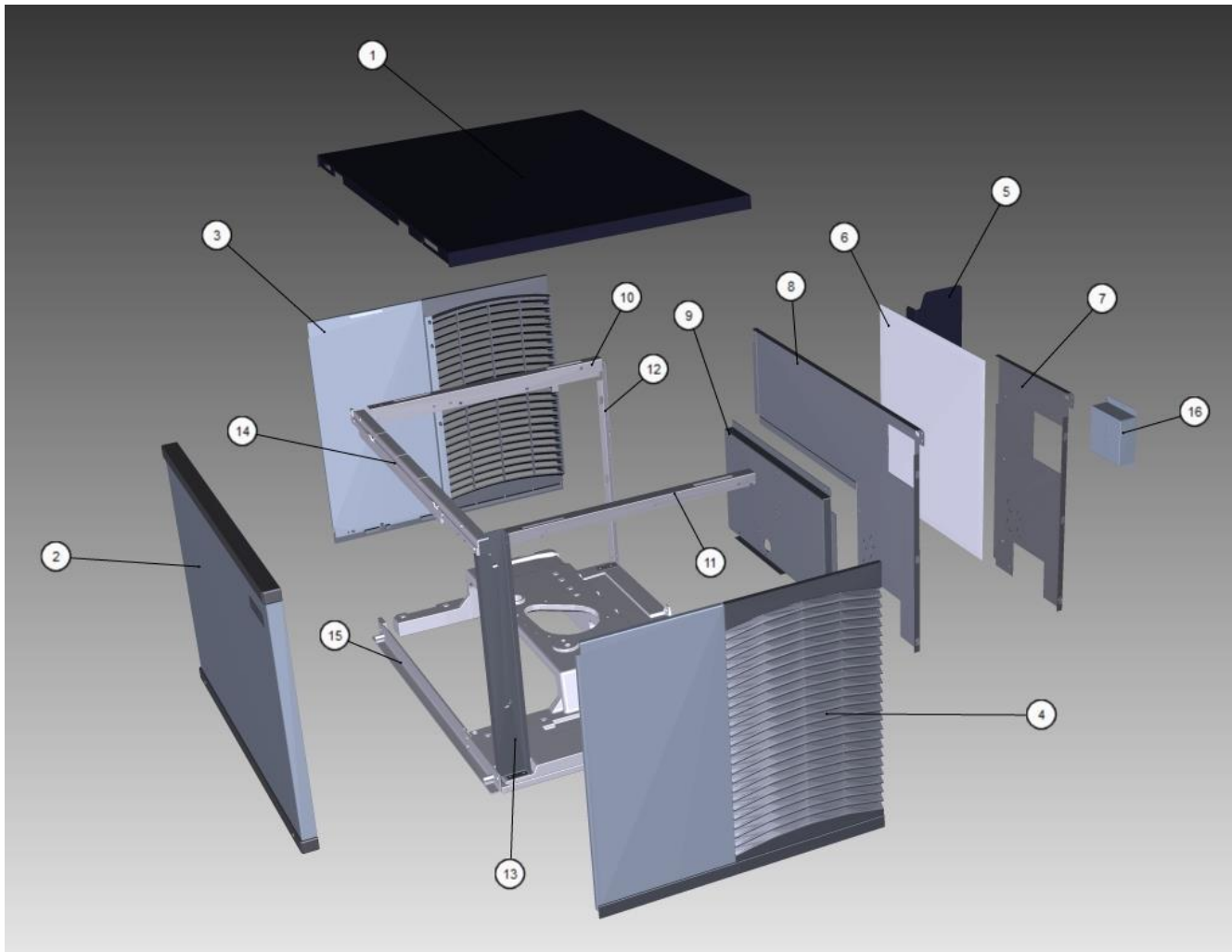
PART NOTES:

- [1] - Snaps into Place
- [2] - Includes Cover and Instructions
- [3] - Includes o-rings.
- [4] - Includes o-rings.
50Hz
- [5] - Includes top frame disks and hex nuts.

KT0700 Evaporator Compartment

KT0700

KT0700 Panels



KT0700 Panels

KT0700 Panels

Manitowoc

KT0700

KT0700 Panels

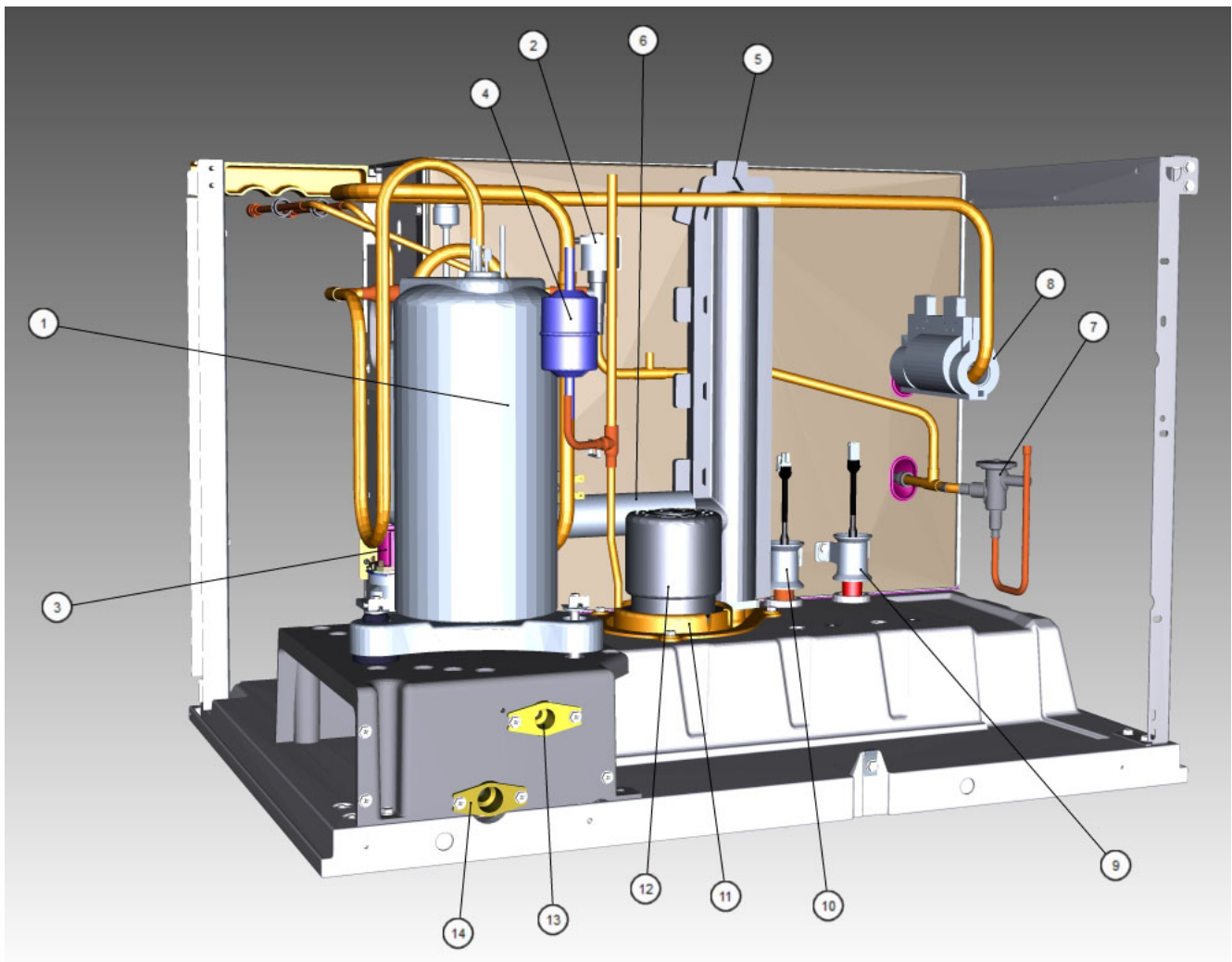
#	PART #	DESCRIPTION	QTY	Note
1	000010523	Top Cover		
2	000012139	Front Panel		
2a	000010294	Door Seal		
2b	000010600	Door - Drip Lip		
2c	000010293	Front Panel Mounting Brackets		
2d	000008023	Screw - #8-32 x 0.875"		
3	000011272	Left Side Panel		[1]
4	000011271	Right Side Panel		[2]
5	000007314	Air Baffle Assembly		
6	3005689	Air Filter - 18.88" x 17.19"		
7	000011039	Back Panel - Air-cooled		
8	000011092	Back Panel - Water-cooled and Remote Air-cooled		
9	000010603	Back Coupling Panel - Water-cooled/Remote		
10	6068649	Left Top Channel		
11	000011032	Right Top Channel		
12	000011100	Left Corner Post		
13	000011326	Right Corner Post		
14	000010269	Front Top Support		
15	000010268	Bottom Door Frame		
15a	000001127	Tapping Plate - Panel Hinge Screws		
16	6067289	Rear Connection Box		
16a	6067299	Cover - Rear Connection Box		
17	000012225	Cartoning		
18	000012003	Bulkhead Gasket		

PART NOTES:

- [1] - Includes panel louver, panel trim bottom, left side panel and dual lock-low profile fastener.
- [2] - Includes panel louver, panel trim bottom, right side panel and dual lock-low profile fastener.

KT0700

KT0700 Refrigeration Compartment - Common Components



KT0700 Refrigeration Compartment - Common Components

KT0700

KT0700 Refrigeration Compartment - Common Components

#	PART #	DESCRIPTION	QTY	Note
1		Compressor - See Note for Usage		
1a	000014179	Compressor - Samsung - 208-230V/60 Hz/1 Ph		
1b	040004801	Compressor - 220-240V/50 Hz/1 Ph		[1]
1c	000016231	Compressor - 220-240V/50 Hz/1 Ph		[2]
2		Harvest Valve		
2a	000007019	Solenoid Valve 0.375" x 0.375" Including 208-230V/50-60 Hz Electrical Coil		[3]
2b	000005157	Solenoid Valve Coil Only - 230V/50-60 Hz		
3		Water Dump Valve		
3a	000014063	Water Dump Valve - 208-230V/50-60 Hz		
3b	6058459	Mounting Bracket - Water Dump Valve		
3c	4420383	Clear Tubing - 0.625" ID		
4	000015361	Drier with Access Port - 0.25"		
5, 6	000015402	Insulated Tube		[4]
7		Expansion Valves - See Note for Usage		
7a	000015026	Expansion Valve		[5]
7b	000015291	Expansion Valve		[6]
7c	000012443	Valve Insulation Boot - Body - Danfoss		
8	000002719	Valve Insulation Boot - Bulb - Danfoss		
9	000012651	Ice Thickness Float		
9a	000010630	Bracket - Ice Thickness Float		
10	000012649	Harvest Float		
10a	000010818	Bracket - Harvest Float		
11	000010244	Water Pump Mount		
12		Water Pump - See Note for Usage		
12a	2007399	Water Pump - 230V/60 Hz		[7]
12b	8252109	Water Pump - 230V/50-60 Hz		[8]
13	8706093	Female Wing Adapter - Brass - 0.375"		[9]
14	000005423	Female Wing Adapter - 0.5"		
15	000009122	Water Inlet Valve - 208-230V/50-60 Hz		[10]
15a	4010439	Tubing - Water Inlet Valve		
16	5650609	Snap Clamp - 1.0" ID		
17	5650709	Snap Clamp - 0.8" x 0.9" ID		
18	000001382	Vinyl Tubing 0.625" ID		
18a	6038831	Insulation - 0.88" ID x 0.25" W x 13.5" L		
19	1360961	Male Connector - 0.375"		
19a	4420291	Tygon Tube - 0.25" OD		
20	5650529	Clamp - Expansion Valve Bulb		
21	3000833	Strap - Expansion Valve Bulb - 0.375"		
22	5202069	Screw - #10-24 x 0.5" HEX		
23	000008346	Compressor Base		
24	000010321	Terminal Cover		[6]
24a	000010319	Terminal Cover Gasket		[6]
25	000014348	Rubber Grommet		[11]

PART NOTES:

[1] - Used on Models Before SN 1120647228

KT0700 Refrigeration Compartment - Common Components

KT0700

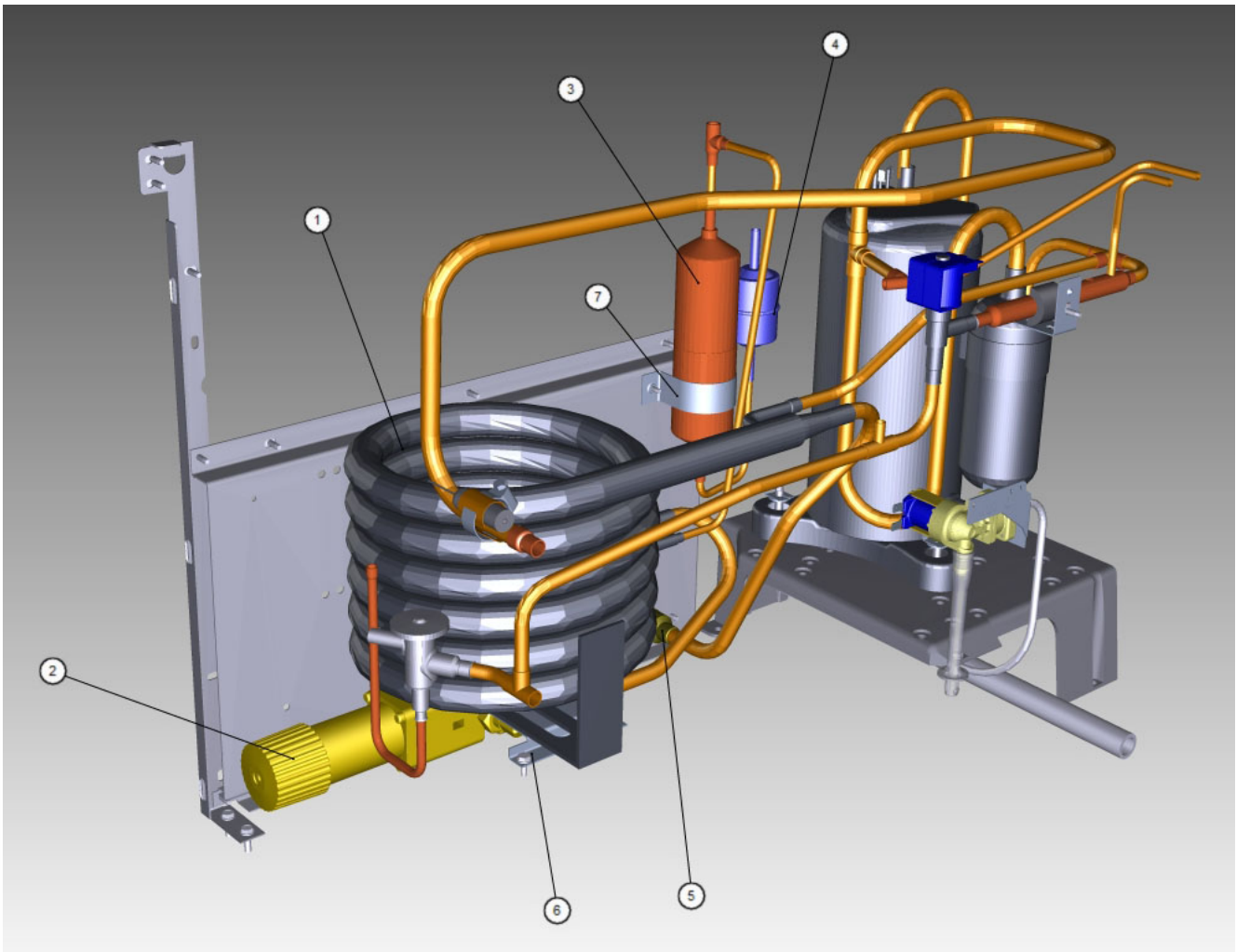
KT0700 Refrigeration Compartment - Common Components

#	PART #	DESCRIPTION	QTY	Note
[2]	-	Used on Models After SN 1120647228		
[3]	-	With Screen		
[4]	-	insulated vinyl tubing from distribution tube to water pump dump valve		
[5]	-	60 Hz Models		
[6]	-	50 Hz Models		
[7]	-	Includes o-rings.		
[8]	-	Includes o-rings. 230V/50 Hz		
[9]	-	Brass		
		If replacing a nylon fitting you must order 1360961		
[10]	-	0.78 gpm		
		Includes water valve inlet, bracket, screws, adapter, 0.375-18 NPT brass connector and locking clip.		
[11]	-	Samsung Compressors		

KT0700 Refrigeration Compartment - Common Components

KT0700

KT0700 Refrigeration Compartment - Water-cooled Components



KT0700 Refrigeration Compartment - Water-cooled Components

KT0700 Water-cooled Compartment

Manitowoc

KT0700

KT0700 Refrigeration Compartment - Water-cooled Components

#	PART #	DESCRIPTION	QTY	Note
1	8253039	Water-cooled Condenser		
2	000013475	Water Regulating Valve - 0.375"		
3	000008892	Receiver		
4	8930259	Drier without Access Port - 0.25"		
5	8706083	Female Wing Adapter - Brass - 0.5"		
6	000010604	Mounting Base - Water Condenser or ReceiverWater Condenser Mounting		
7	6000541	Receiver Strap		
8	5002249	Elbow - 0.5" MF x 0.375" MPT		
9	5202069	Screw - #10-24 x 0.5" HEX		
10	5573419	Washer		
11	5003883	Flare Nut - 0.5"		

KT0700 Refrigeration Compartment - Water-cooled Components