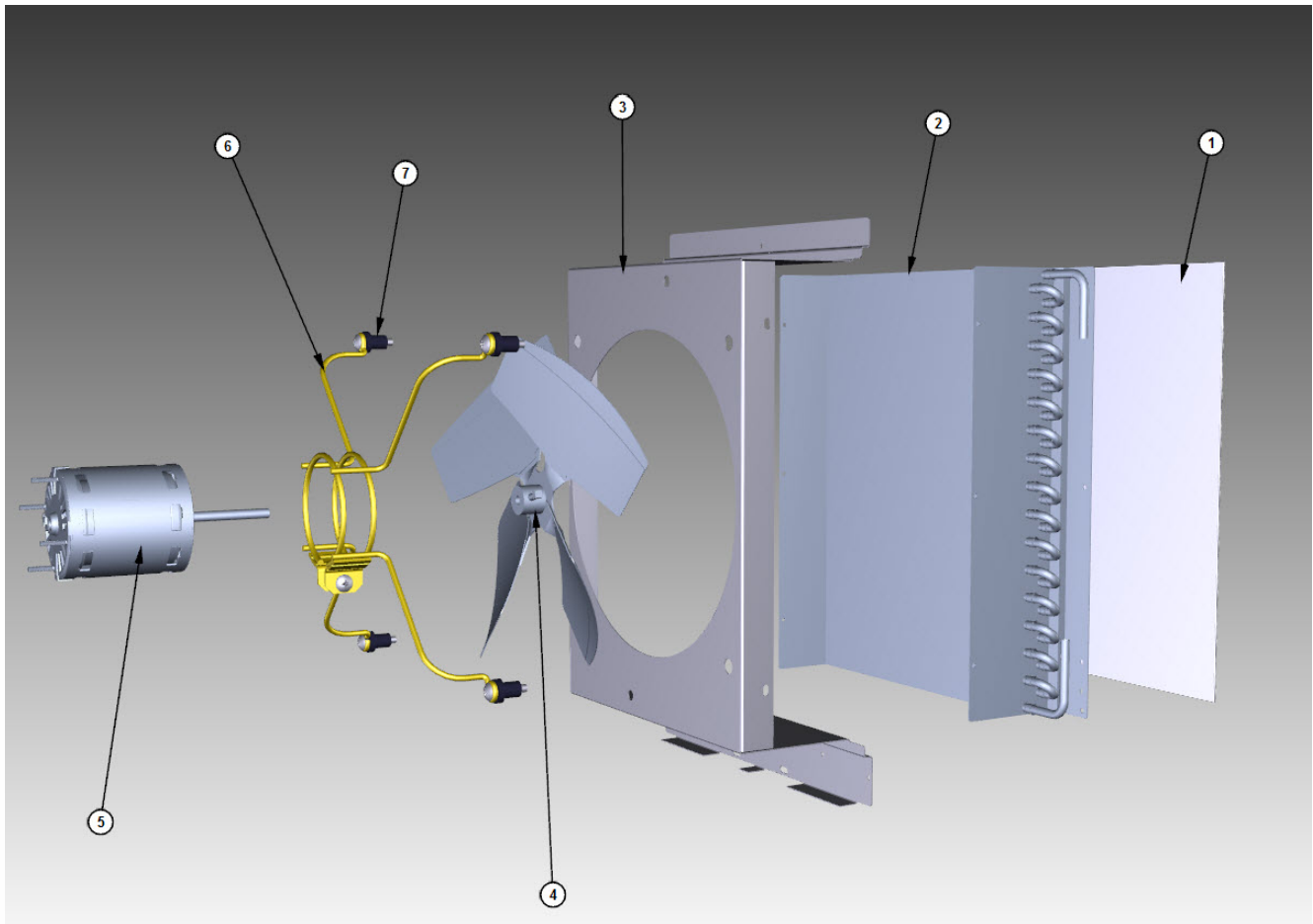


# KT0420

## KT0420 Refrigeration Compartment - Air-cooled Components



KT0420 Refrigeration Compartment - Air-cooled Components

# KT0420

## KT0420 Refrigeration Compartment - Air-cooled Components

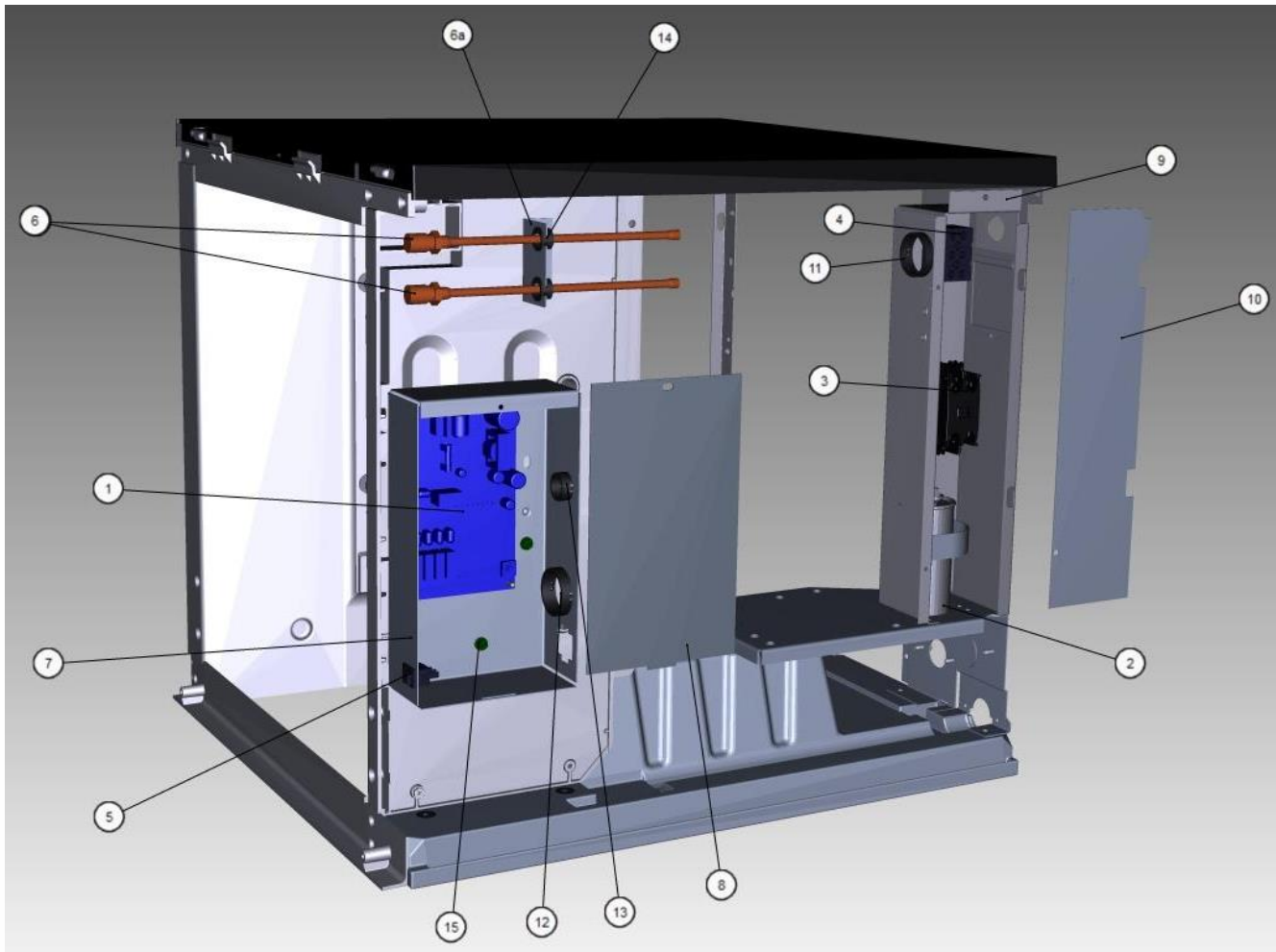
#	PART #	DESCRIPTION	QTY	Note
1	3005939	Air Filter - 16.8" x 12.81"		
2		Air Condenser - See Note for Usage		
2a	00008832	Air Condenser		[1]
2b	8252129	Air Condenser		[2]
3	000014015	Fan Shroud		
4	2416203	Fan Blade		
5		Fan Motor		
5a	2412929	Fan Motor - 115V/60 Hz/1 Ph		[3]
5b	2412939	Fan Motor - 208-230V/50-60 Hz		[4]
6	000014018	Fan Motor Bracket		
7		Fan Motor Mounting		
7a	5033589	Screw		
7b	5429559	Rubber WellnutMounting -		
7c	5429529	Mounting - Hexnut		

### PART NOTES:

- [1] - 60 Hz
- [2] - 50 Hz
- [3] - Includes Nuts
- [4] - Includes Nuts.

# KT0420

## KT0420 Control Box



KT0420 Control Box

KT0420 Control Box

# KT0420

## KT0420 Control Box

#	PART #	DESCRIPTION	QTY	Note
1	000015302	Control Board Assembly		[1]
1a	000015010	Fuse - 3.15A		
1b	4302253	Control Board Mounting Supports		
2		Run Capacitor - See Note for Usage		
2a	000010708	Run Capacitor - 115-230V/50-60 Hz/1 Ph		[2]
2b	000010715	Run Capacitor - 230V/50-60 Hz/1 Ph		[3]
2c	000011640	Run Capacitor - 230V/50-60 Hz/1 Ph		[4]
2d	000010711	Bracket - Run Capacitor		
3		Contactor		
3a	2006589	Contactor - 115V/60 Hz/1 Ph		
3b	2006599	Contactor - 230V/50-60 Hz/1 Ph		
4	2006143	Terminal Block - 50 Hz - 3 Pole		
5	2007939	Toggle Switch		
6	8373263	Access Valve - 7.25" L		[5]
6a	7626843	Valve Cores		
6b	000011548	Bracket - Refrigeration Service Valves		
6c	000012264	Refrigeration Service Valve Assembly - 0.3125"		[6]
7	000014565	Control Box		
8	000014566	Control Box - Cover		
9	000014572	Start Component Box		
10	000011479	Cover - Start Component Box		
11, 12	2500019	Bushing - 1.187"		
13	2501409	Bushing - 0.875"		
14	2502189	Bushing - 0.625"		
15	5202169	Screw - #10-24 x 0.5" Ground		
16	5202069	Screw - #10-24 x 0.5" HEX		
16a	5573209	Star Washer		
17	000011143	Overload Protector - 230V/60 Hz/1 Ph		
17a	000010853	Overload Protector - Bracket		
18		Wiring Harness - Control Box		
18a	000013974	Control Box Wiring Harness - 115V/60 Hz/1 Ph		
18b	000013973	Control Box Wiring Harness - 230V/60 Hz/1 Ph		
18c	000013972	Control Box Wiring Harness - 230V/50 Hz/1 Ph		
19	000011182	Wiring Harness - Compressor - Samsung		
20	000007185	Wiring Harness - Compressor Compartment - Air-cooled		
21	000007177	Wiring Harness - Compressor Compartment - Water-cooled		
22	000010511	Wiring Harness - Float Switch to Control Box		
23	000010724	Wiring Harness - Toggle Switch		
24	000011170	Manifold Strainer		
24a	000010699	Grommet - Manifold Strainer		
25	000013531	Fan Cycling Control - 335-275 psig		
26	000013576	High Pressure Cut-out 450-600 psig		
27	000014323	PTCR - 12A		
27a	8505013	PTCR Mounting Bracket		
27b	5004129	Screw - #6 x 0.5"		

KT0420 Control Box

# KT0420

## KT0420 Control Box

#	PART #	DESCRIPTION	QTY	Note
<b>PART NOTES:</b>				
[1]	-	Includes board and instructions.		
[2]	-	115V/60 Hz		
[3]	-	230V/60 Hz		
[4]	-	230V/50 Hz		
[5]	-	60 Hz		
[6]	-	50 Hz		

---

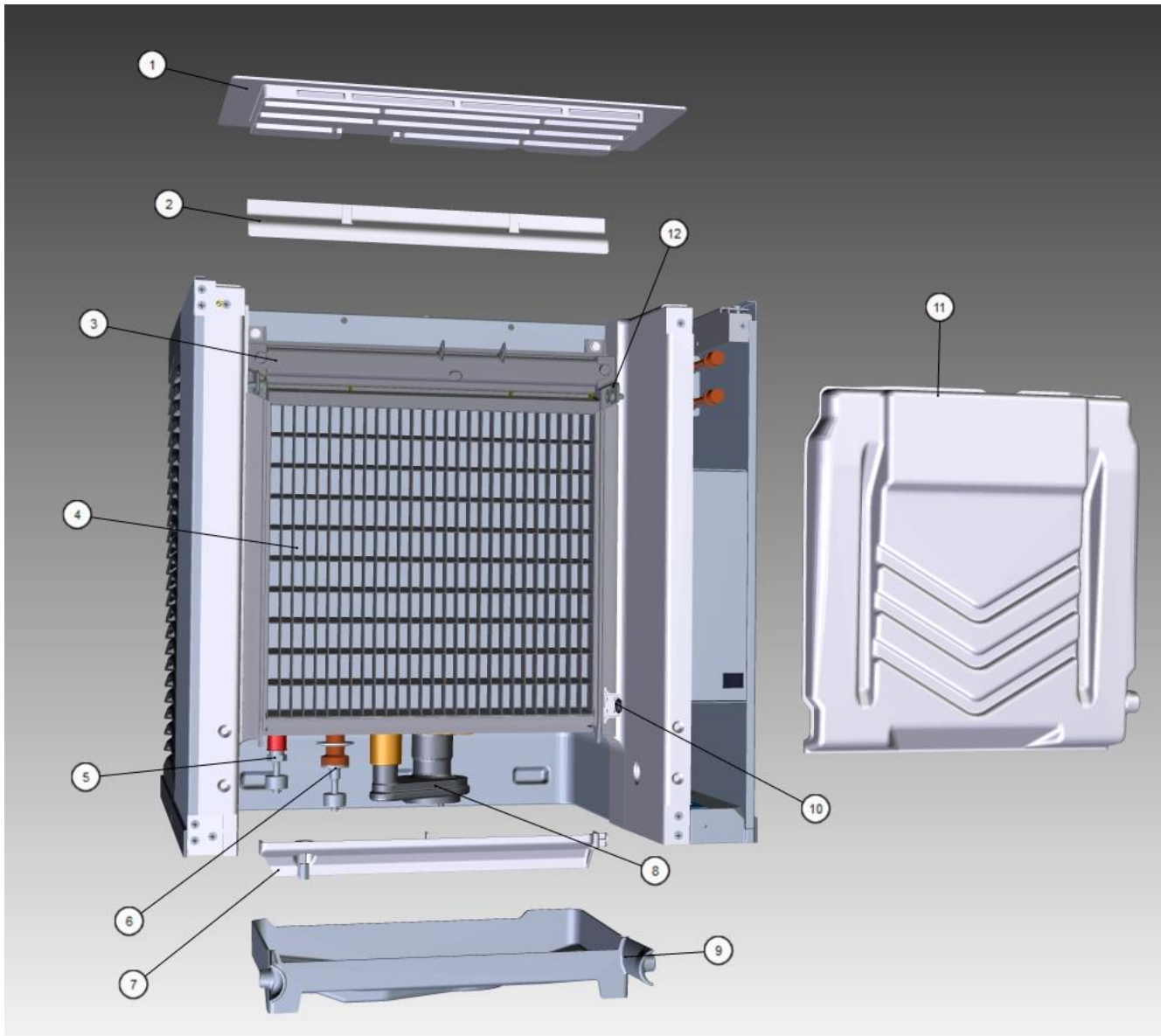
KT0420 Control Box

KT0420 Control Box



# KT0420

## KT0420 Evaporator Compartment



KT0420 Evaporator Compartment

KT0420 Evaporator Compartment

**Manitowoc**

# KT0420

## KT0420 Evaporator Compartment

#	PART #	DESCRIPTION	QTY	Note
1	000009188	Foodzone Seal Panel		
2	6065389	Evaporator Top Filler Panel		[1]
2a	5202099	Screw - #10-24 x 0.5" PHIL		
3	7602789	Water Distribution Tube - 22"		
3a	5004799	Thumbscrew SS - #8-32 x 0.375"		
3b	5004629	O-Ring - 0.125" ID		
4		Evaporator		
4a	7602769	Evaporator - Dice Cube		
4b	7602759	Evaporator - Half Dice Cube		
5	000012651	Ice Thickness Float		
5a	000010630	Bracket - Ice Thickness Float		
6	000012649	Harvest Float		
6a	000010818	Bracket - Harvest Float		
7	7602779	Water Diverter - 22" Models		
7a	5305123	Thumbscrew SS - #8-32 x 0.44"		
8		Water Pump		
8a	2008929-ORA	Water Pump - 115V/60 Hz		
8b	2008939	Water Pump - 230V/60 Hz		[2]
8c	2008949	Water Pump - 230V/50 Hz		[2]
8d	5004659	Water Pump Base O-Ring - 4.00" ID		
8e	5004679	Water Pump Outlet O-Ring - 0.875" ID		
8f	000010244	Water Pump Mount		
9	000011512	Water Trough - 22"		
10	000010510	Magnetic Bin Switch		
11	4011189	Water Curtain		
12	7602799	Evaporator Top Frame Assembly - 22"		[3]
13	4010463	Evaporator Bottom Frame Assembly		
13a	5429139	Hex Nut - #8-32 Brass		
14	5004619	Screw - #12-16 x 0.687"		

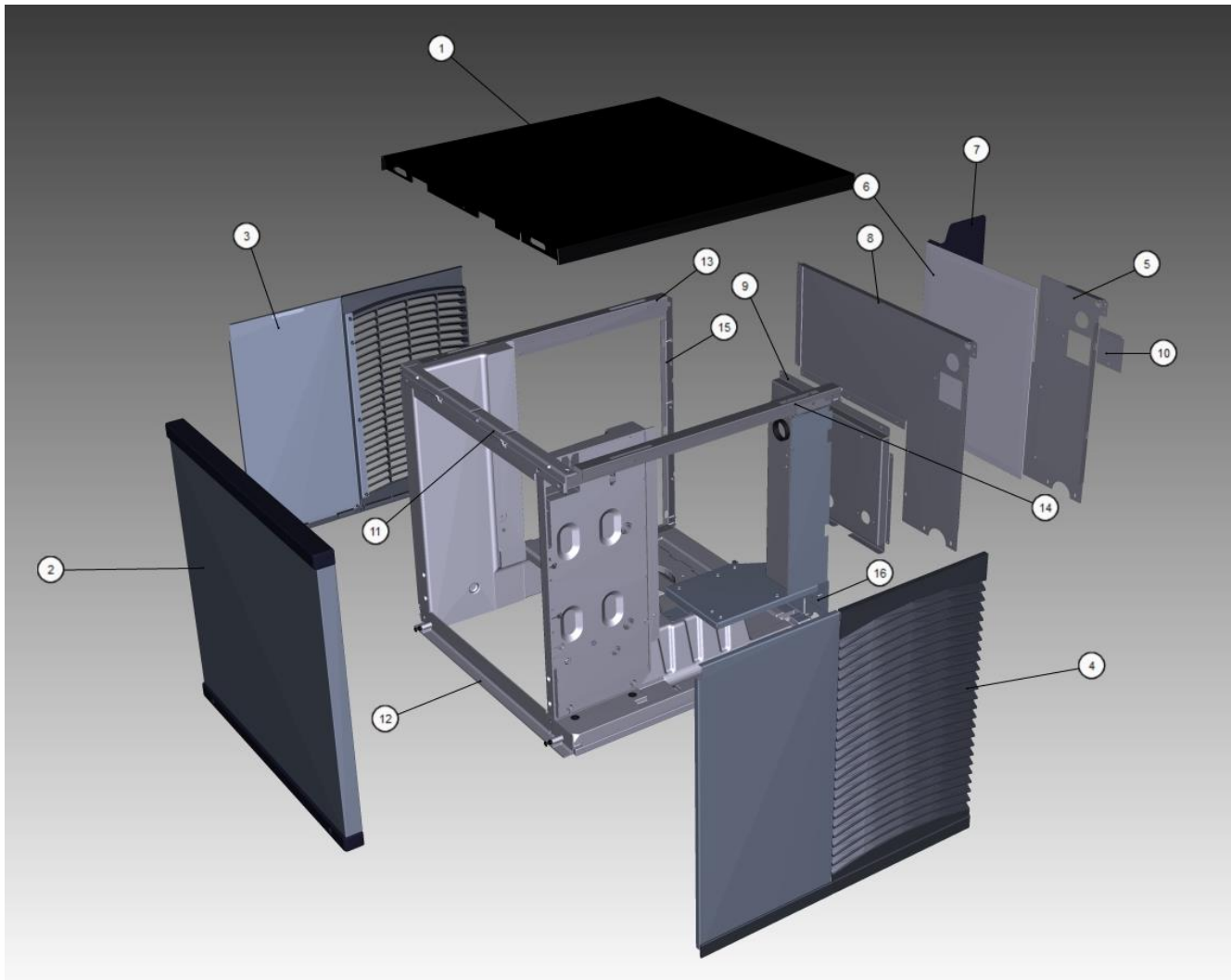
### PART NOTES:

- [1] - Includes Cover
- [2] - Includes O-Rings
- [3] - Includes top frame disks and hex nuts.

KT0420 Evaporator Compartment

# KT0420

## KT0420 Panels





# KT0420

## KT0420 Panels

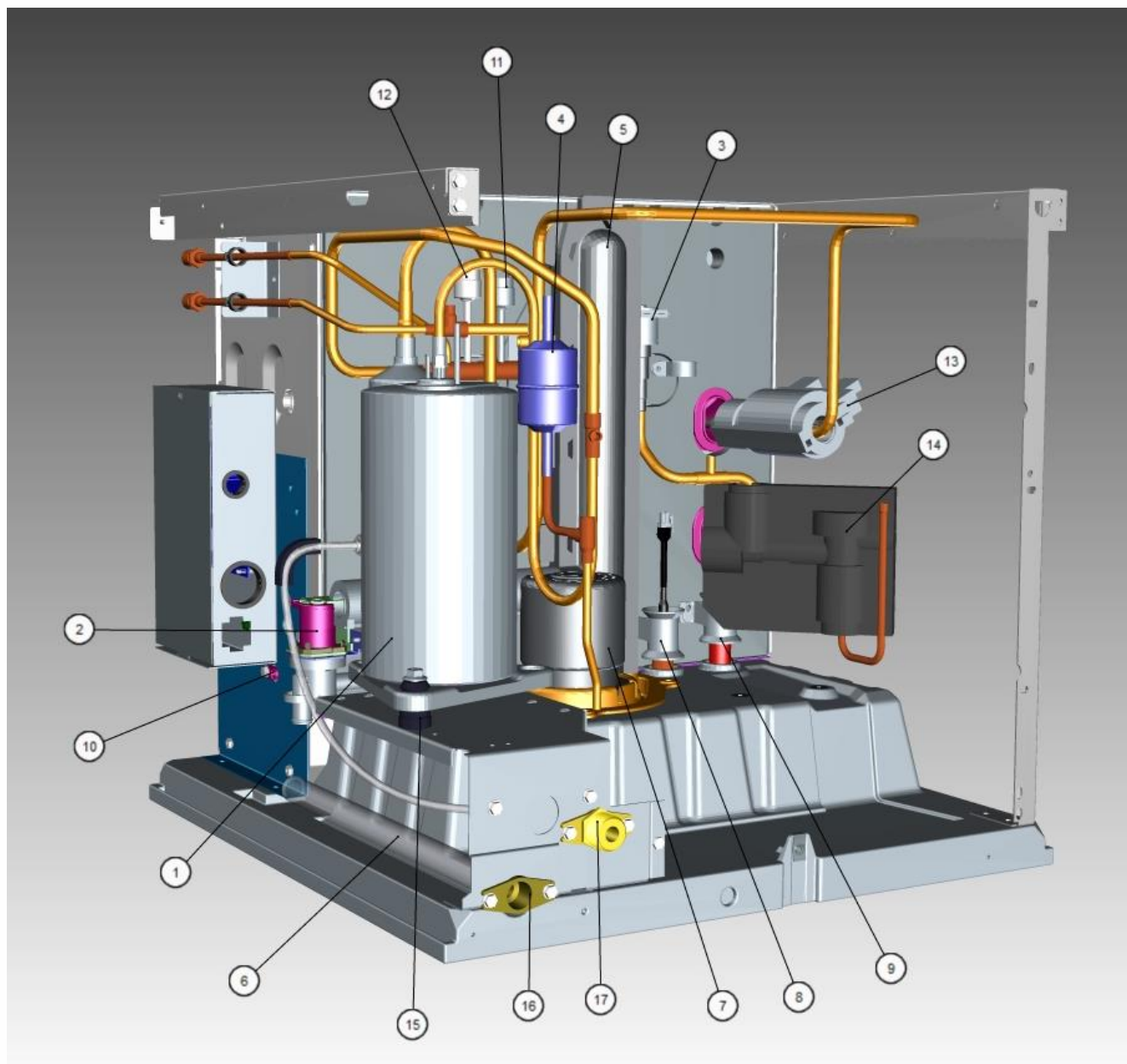
#	PART #	DESCRIPTION	QTY	Note
1	000011684	Top Cover		
2	000012465	Front Panel		[1]
2a	000010945	Door - Drip Lip		
2b	000010293	Front Panel Mounting Brackets		
2c	000008023	Screw - #8-32 x 0.875"		
2d	000010296	Door Seal		
3	000011272	Left Side Panel		[2]
4	000011271	Right Side Panel		[3]
5	000011501	Back Panel - Air-cooled		
6	3005939	Air Filter - 16.8" x 12.81"		
7	000007314	Air Baffle Assembly		
8	000011502	Back Panel - Water-cooled		
9	000011503	Coupling Panel - Water-cooled		
10	6063999	Electrical Connection Box Cover		
11	000010721	Front Top Support		
12	000010720	Bottom Door Frame		
12a	000001127	Tapping Plate - Panel Hinge Screws		
13	6068649	Left Top Channel		
14	000010981	Right Top Channel		
15	000011100	Left Corner Post		
16	000012417	Compressor Mounting Base		
17	000011478	Start Component Box		
17a	000011479	Cover - Start Component Box		
17b	2006143	Terminal Block - 50 Hz - 3 Pole		
17c	5202169	Screw - #10-24 x 0.5" Ground		
18	5005099	Screw - #10-16 x 0.625"		
19	8706083	Female Wing Adapter - Brass - 0.5"		
20	5202099	Screw - #10-24 x 0.5" PHIL		
21	000012468	Cartoning		

### PART NOTES:

- [1] - Includes front panel, shear front panel, screws, hook strap bracket, door seal and gasket drip lip.
- [2] - Includes panel louver, panel trim bottom, left side panel and dual lock-low profile fastener.
- [3] - Includes panel louver, panel trim bottom, right side panel and dual lock-low profile fastener.

# KT0420

## KT0420 Refrigeration Compartment - Common Components



## KT0420 Refrigeration Compartment - Common Components

# KT0420

## KT0420 Refrigeration Compartment - Common Components

#	PART #	DESCRIPTION	QTY	Note
1		Compressor		
1a	000010315	Compressor - Samsung - 115V/60 Hz/1 Ph		
1b	000010316	Compressor - Samsung - 208-230V/60 Hz/1 Ph		
1c	000010464	Compressor - Samsung - 230V/50 Hz/1 Ph		
2		Water Dump Valve		
2a	000014062	Water Dump Valve - 115V/60 Hz		
2b	000014063	Water Dump Valve - 208-230V/50-60 Hz		
2c	6058459	Mounting Bracket - Water Dump Valve		
3		Harvest Valves - See Notes for Details		
3a		Harvest Valve - Danfoss		[1]
3aa	000007029	Solenoid Valve 0.375" x 0.375" Including 115V/50-60 Hz Electrical Coil		[2]
3ab	000005156	Solenoid Valve Coil Only - 115V/60 Hz		
3ac	000007028	Solenoid Valve 0.375" x 0.375" Including 208-230V/50-60 Hz Electrical Coil		[2]
3ad	000005157	Solenoid Valve Coil Only - 230V/50-60 Hz		
3b		Harvest Valve - Sanhua		[3]
3ba	000017684	Solenoid Valve 0.375" x 0.375" Including 115V/60 Hz Electrical Coil		
3bb	000016625	Solenoid Valve Coil Only - 115V/60 Hz		
3bc	000017686	Solenoid Valve 0.375" x 0.375" Including 208-230V/50-60 Hz Electrical Coil		
3bd	000016626	Solenoid Valve Coil Only - 230V/50-60 Hz		
4	000015361	Drier with Access Port - 0.25"		
5	000015334	Insulated Tube		[4]
5a	5650609	Snap Clamp - 1.0" ID		
5b	5650709	Snap Clamp - 0.8" x 0.9" ID		
6	000001382	Vinyl Tubing 0.625" ID		
6a	6038831	Insulation - 0.88" ID x 0.25" W x 13.5" L		
6b	5650709	Snap Clamp - 0.8" x 0.9" ID		
7		Water Pump		
7a	2008929-ORA	Water Pump - 115V/60 Hz		
7b	2008939	Water Pump - 230V/60 Hz		[5]
7c	2008949	Water Pump - 230V/50 Hz		[5]
7d	000010244	Water Pump Mount		
8	000012649	Harvest Float		
8a	000010818	Bracket - Harvest Float		
9	000012651	Ice Thickness Float		
9a	000010630	Bracket - Ice Thickness Float		
10	000010510	Magnetic Bin Switch		
11	000013576	High Pressure Cut-out 450-600 psig		
12	000013531	Fan Cycling Control - 335-275 psig		
13	000002719	Valve Insulation Boot - Bulb - Danfoss		
13a	5650529	Clamp - Expansion Valve Bulb		
13b	3000833	Strap - Expansion Valve Bulb - 0.375"		
14		Expansion Valve - See Note for Usage		
14a	000015013	Expansion Valve - Danfoss		[6]
14b	000015011	Expansion Valve - Danfoss		[7]

## KT0420 Refrigeration Compartment - Common Components

# KT0420

## KT0420 Refrigeration Compartment - Common Components

#	PART #	DESCRIPTION	QTY	Note
14c	000012443	Valve Insulation Boot - Body - Danfoss		
14d	000017688	Expansion Valve - Sporlan - USE UP		[8]
14e	000016441	Valve Insulation Boot - Body - Sporlan		
15		Compressor Mounting		
15a	5005009	Compressor Mounting Nut		
15b	000014348	Rubber Grommet		
15c	5000109	Metal Sleeve		
15d	000012417	Compressor Mounting Base		
16	000005423	Female Wing Adapter - 0.5"		
17	8706093	Female Wing Adapter - Brass - 0.375"		[9]
17a	1360961	Male Connector - 0.375"		
18		Water Inlet Valve		
18a	000009120	Water Inlet Valve - 115V/60 Hz/1 Ph		[10]
18b	000009126	Water Inlet Valve - 208-230V/50-60 Hz		[10]
19	000011505	Terminal Cover		
19a	000011506	Terminal Cover Gasket		
19b	000010854	Terminal Cover Nut		
20	000014071	Heat Exchanger		

### PART NOTES:

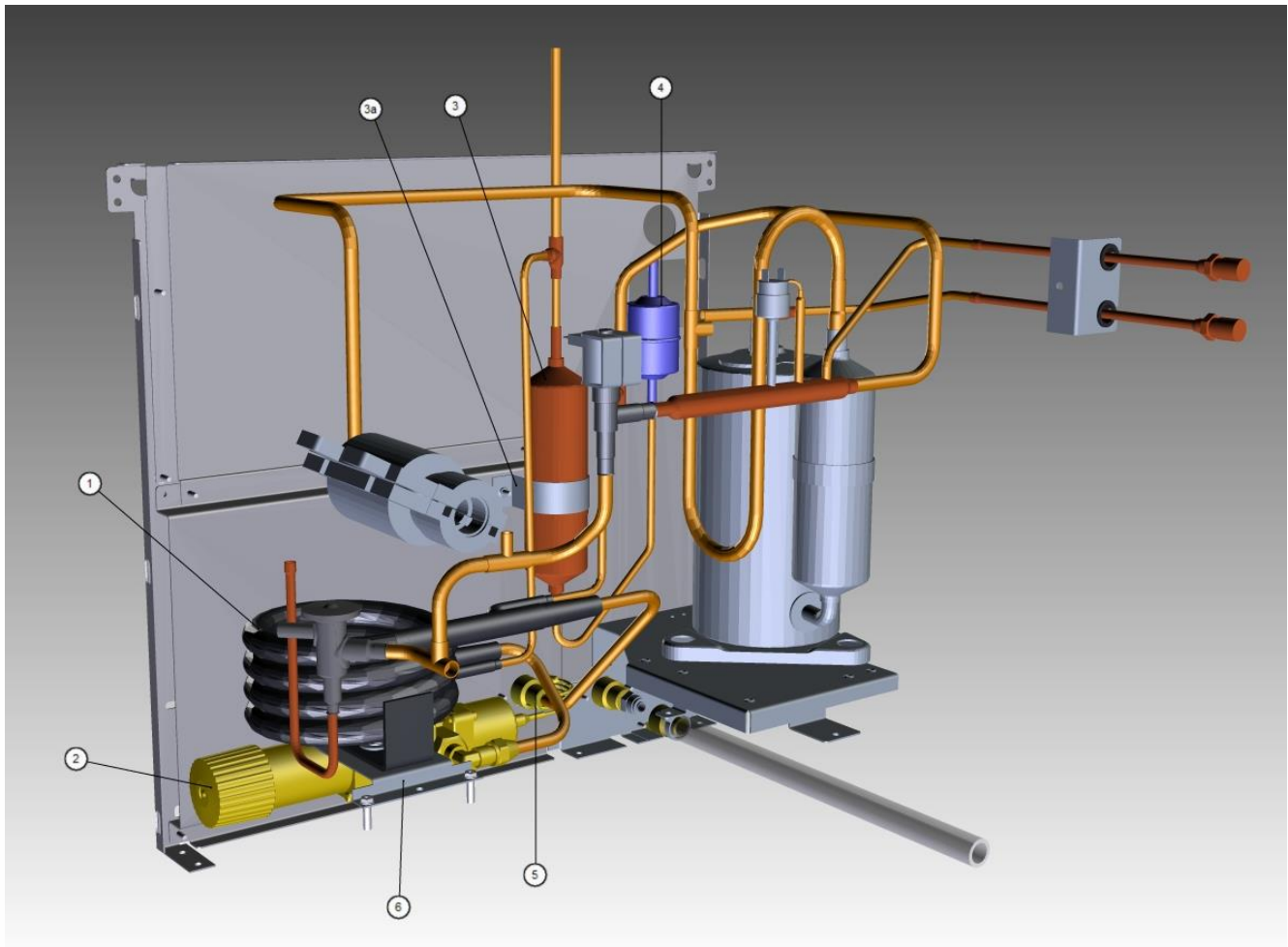
- [1] - Replace Danfoss Valves with Danfoss Valves.
- [2] - Without Screen
- [3] - Replace Sanhua Valves with Sanhua Valves.
- [4] - vinyl tubing from distribution tube to water pump dump valve
- [5] - Includes O-Rings
- [6] - Air-cooled  
Replace Danfoss and/or Sporlan Expansion Valves with Danfoss Expansion Valves.
- [7] - Water-cooled  
Replace Danfoss and/or Sporlan Expansion Valves with Danfoss Expansion Valves.
- [8] - No Longer Available  
Replace Sporlan Expansion Valves with Danfoss Expansion Valves.
- [9] - Brass  
  
If replacing a nylon fitting you must order 1360961
- [10] - 0.5 gpm  
  
Includes water valve inlet, bracket, screws, adapter and locking clip.

---

## KT0420 Refrigeration Compartment - Common Components

# KT0420

## KT0420 Refrigeration Compartment - Water-cooled Components



---

KT0420 Refrigeration Compartment - Water-cooled Components

# KT0420

## KT0420 Refrigeration Compartment - Water-cooled Components

#	PART #	DESCRIPTION	QTY	Note
1	000000045	Water-cooled Condenser		
2	000013475	Water Regulating Valve - 0.375"		
2a	5002159	Elbow - 0.375" MF x 0.375" MPT		
3	000008892	Receiver		
3a	6000541	Receiver Strap		
4	8930259	Drier without Access Port - 0.25"		
5	8706103	Female Wing Adapter - Brass - 0.5" NPT x 0.375" ODF		
6	000010604	Mounting Base - Water Condenser or Receiver		
6a	5012319	Screw - #12-16 x 0.75"		
6b	5202069	Screw - #10-24 x 0.5" HEX		
6c	5573419	Washer		
7	8706083	Female Wing Adapter - Brass - 0.5"		

---

KT0420 Refrigeration Compartment - Water-cooled Components