

# N0422, F0522, N0622, F0822, N0922, F1222, N1322, F1522

## Service Parts

This is the illustrated service parts list for the N0422, F0522, N0622, F0822, N0922, F1222, N1322 and F1522 air cooled, water cooled or remote air cooled ice machine heads.

Several models are listed together, be sure to select the correct part based on the complete model number, including voltage.

N0622 and F0822 compressor changed in 2011.

Water reservoir and related parts changed June 2012.

N0922 & F1222 compressor change in April, 2014.

F0522, N0422, F0822 and N0622 E Series water regulation valve setpoint changed to 230 PSI on water cooled units.

Prodigy Plus D Series began Dec 2014, E Series began in Aug of 2017

Voltage codes:

- -1 = 115/60/1
- -32 = 208-230/60/1
- -3 = 208-230/60/3
- -6 = 230/50/1

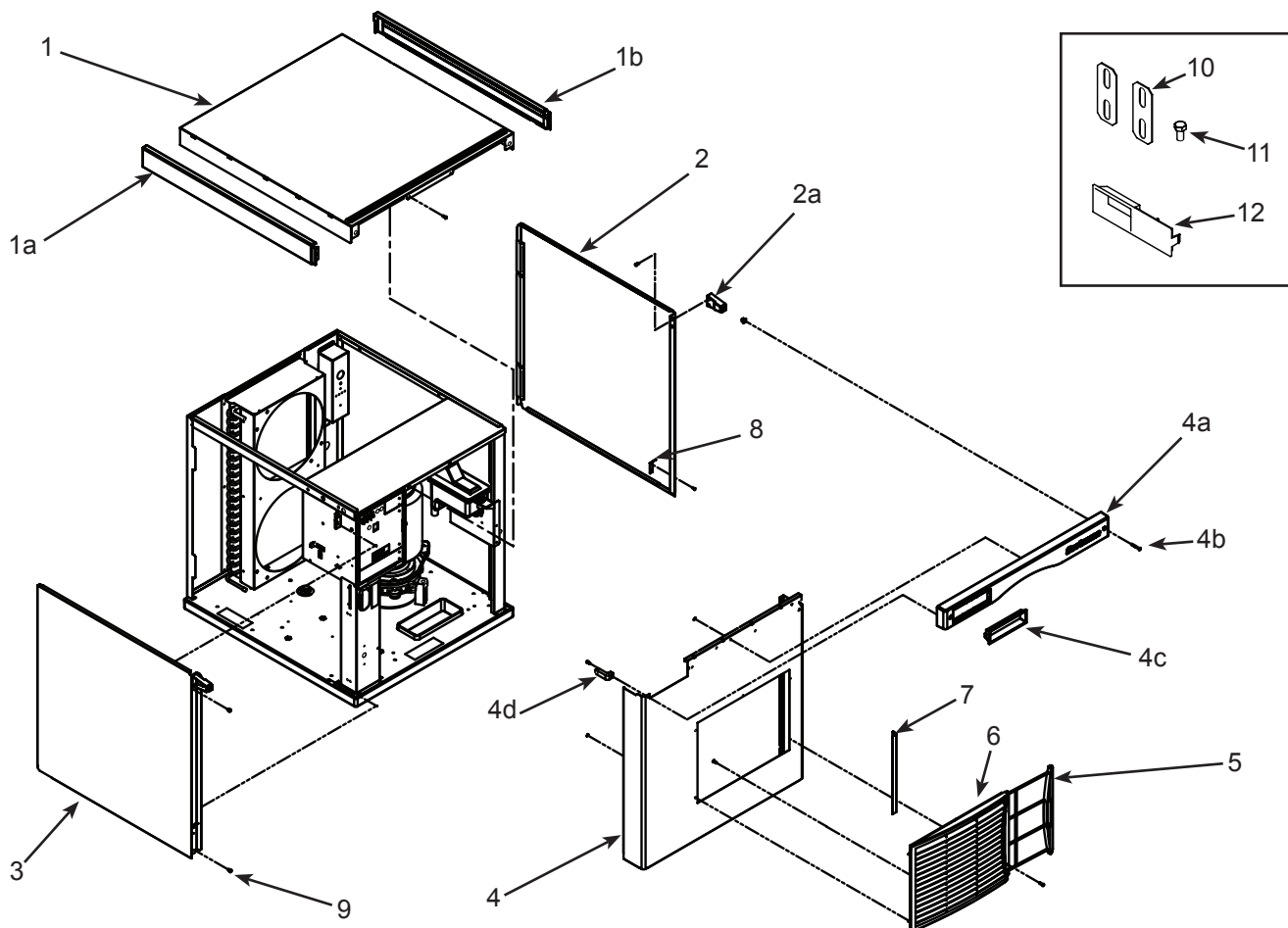
## Contents

Exterior, N0422, F0522, N0622, F0822 A or B Series .....	Page 2
Exterior, N0922, F1222, N1322, F1522 A or B Series .....	Page 3
Exterior, N0422, F0522, N0622, F0822 D or E Series .....	Page 4
Exterior, N0922, F1222, N1322, F1522 D or E Series .....	Page 5
Interior Cabinet, Water, and Chute Systems - Clear Reservoir Cover .....	Page 6
Interior Cabinet, Water, and Chute Systems - White Reservoir Cover & D or E Series .....	Page 7
Refrigeration Condensing, Air Cooled .....	Page 8
Condenser Fan Motor System - N0422, F0522, N0622, F0822 .....	Page 9
Condenser Fan Motor System, N0922, F1222, N1322, F1522 .....	Page 10
Refrigeration Condensing, Water Cooled .....	Page 11
Refrigeration Condensing, Remote Cooled .....	Page 12
Remote Condenser - ERC111 or ERC311 .....	Page 13
Nugget Evaporator System, N0422, N0622, N0922, N1322 .....	Page 14
Evaporator System, Flakers F0522, F0822, F1222, F1522 .....	Page 15
Gear Reducer and Motor .....	Page 16
Electrical & Control Box .....	Page 17
Compressors .....	Page 18
Compressor Mounting Hardware .....	Page 18
Crankcase Heaters .....	Page 18
Wiring Diagram N0422 and F0522 A Series .....	Page 19
Wiring Diagram N0422 and F0522 D Series .....	Page 30

# N0422, F0522, N0622, F0822, N0922, F1222, N1322, F1522

## Service Parts

Exterior, N0422, F0522, N0622, F0822 A or B Series



Item Number	Part Number	Description
1	A39579-021	Top panel
1a	<a href="#">02-4221-01</a>	Left trim strip*
1b	<a href="#">02-4221-02</a>	Right trim strip*
2	A39445-021	Right side panel
2a	<a href="#">02-4215-01</a>	Screw receptacle

side panel includes items 2a and 8

3	A39444-021	Left side panel, AC
	A39444-022	Left side panel, WC, RC

side panel includes items 2a and 8

4	A39443-021	Front panel, AC
---	------------	-----------------

front panel includes items 4a, 4b, 4c, 5, 6, 7

	A39443-022	Front panel, WC, RC
--	------------	---------------------

front panel includes 4a, 4b, 4c

4a	<a href="#">02-4214-01</a>	Trim strip
4b	<a href="#">03-1735-03</a>	Screw
4c	<a href="#">02-4284-01</a>	Bezel
4d	<a href="#">02-4216-01</a>	Gusset***
5	<a href="#">02-4212-01</a>	Air filter

6	<a href="#">02-4224-01</a>	Louver bracket
7	A39238-001	Filter bracket
8	A39571-001	Clip
9	<a href="#">03-1404-12</a>	Screw
10	A30911-015	Machine straps
11	<a href="#">03-1405-15</a>	Screw
12	<a href="#">02-4284-02</a>	Bezel, partial window**

\* Side trim strips discontinued mid 2011

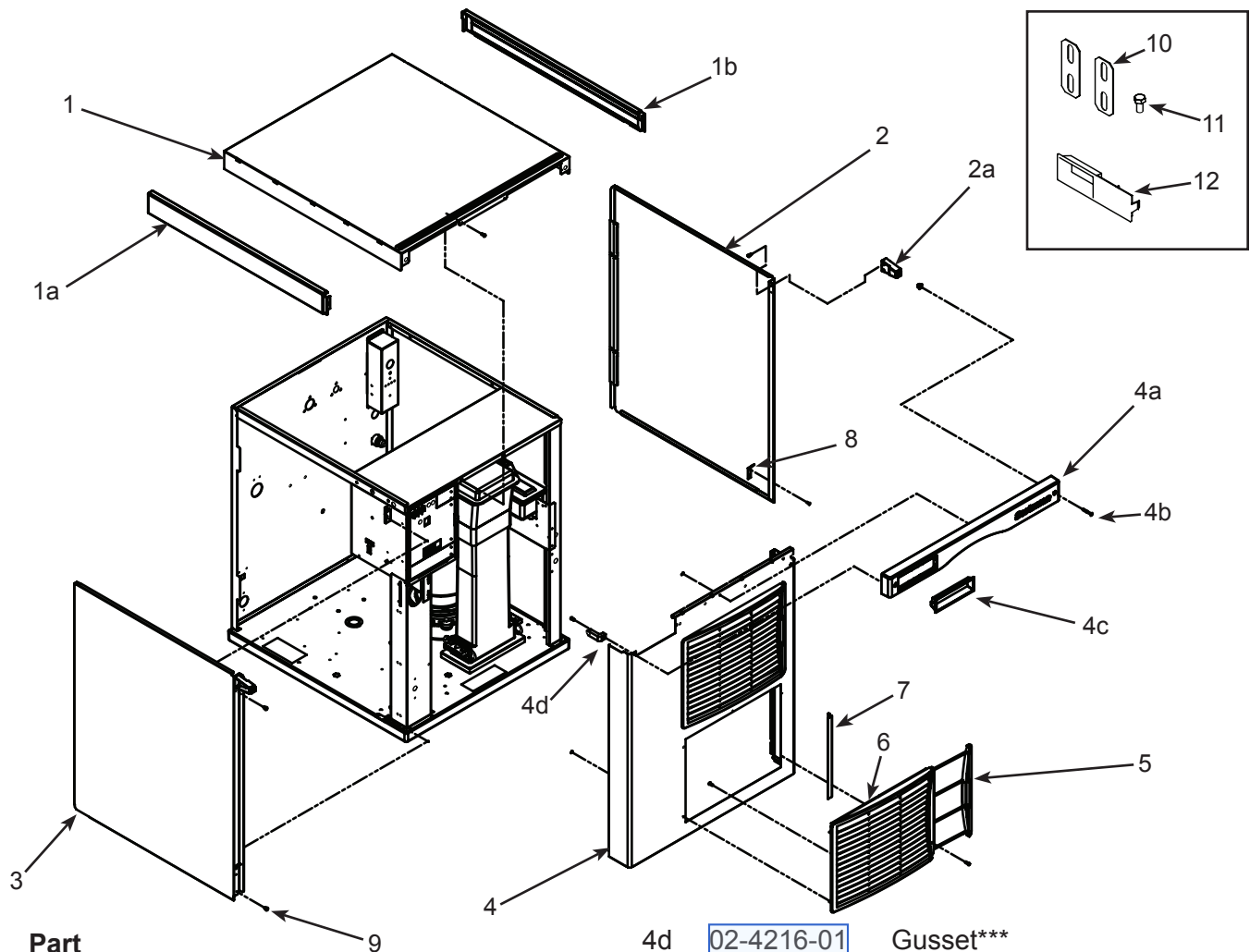
\*\* Item 12 discontinued from production 2/9/2012.

\*\*\*Gusset discontinued May 2013.

# N0422, F0522, N0622, F0822, N0922, F1222, N1322, F1522

## Service Parts

Exterior, N0922, F1222, N1322, F1522 A or B Series



Item Number	Part Number	Description
1	A39579-021	Top panel
1a	<a href="#">02-4221-01</a>	Left trim strip*
1b	<a href="#">02-4221-02</a>	Right trim strip*
2	A39445-022	Right side panel
2a	<a href="#">02-4215-01</a>	Screw receptacle
side panel includes items 2a and 8		
3	A39444-023	Left side panel, AC
	A39444-024	Left side panel, WC, RC
side panel includes items 2a and 8		
4	A39443-023	Front panel, AC
front panel includes items 4a, 4b, 4c, 5, 6, 7		
	A39443-024	Front panel, WC, RC
front panel includes 4a, 4b, 4c		
4a	<a href="#">02-4214-01</a>	Trim strip
4b	<a href="#">03-1735-03</a>	Screw
4c	<a href="#">02-4284-01</a>	Bezel

4d	<a href="#">02-4216-01</a>	Gusset***
5	<a href="#">02-4212-01</a>	Air filter
6	<a href="#">02-4224-01</a>	Louver bracket
7	A39238-001	Filter bracket
8	A39571-001	Clip
9	<a href="#">03-1404-12</a>	Screw
10	A30911-015	Machine straps
11	<a href="#">03-1405-15</a>	Screw
12	<a href="#">02-4284-02</a>	Bezel, partial window**

\* Side trim strips discontinued mid 2011

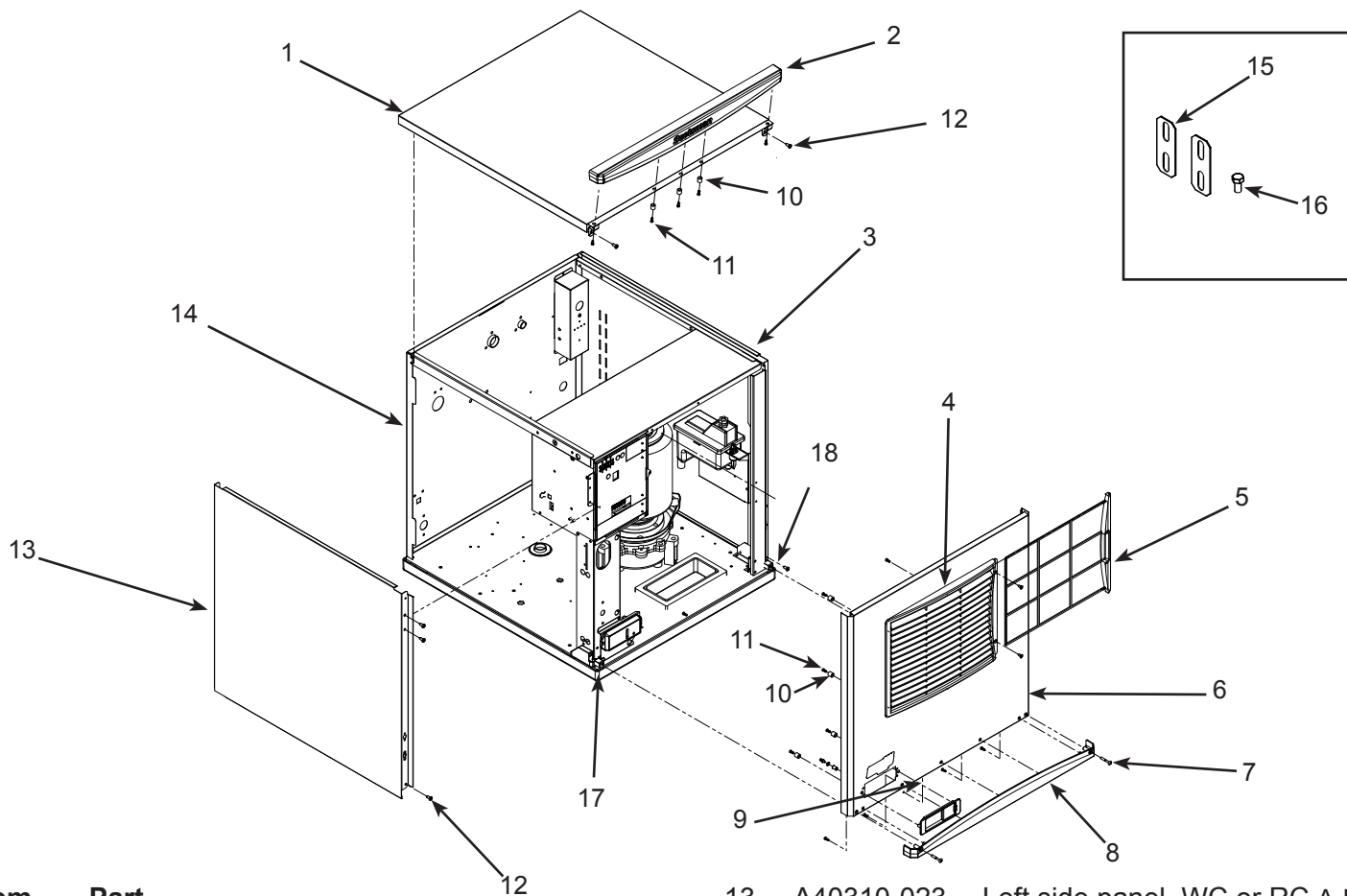
\*\* Item 12 discontinued from production 2/9/2012.

\*\*\* Gusset discontinued May 2013

# N0422, F0522, N0622, F0822, N0922, F1222, N1322, F1522

## Service Parts

Exterior, N0422, F0522, N0622, F0822 D or E Series

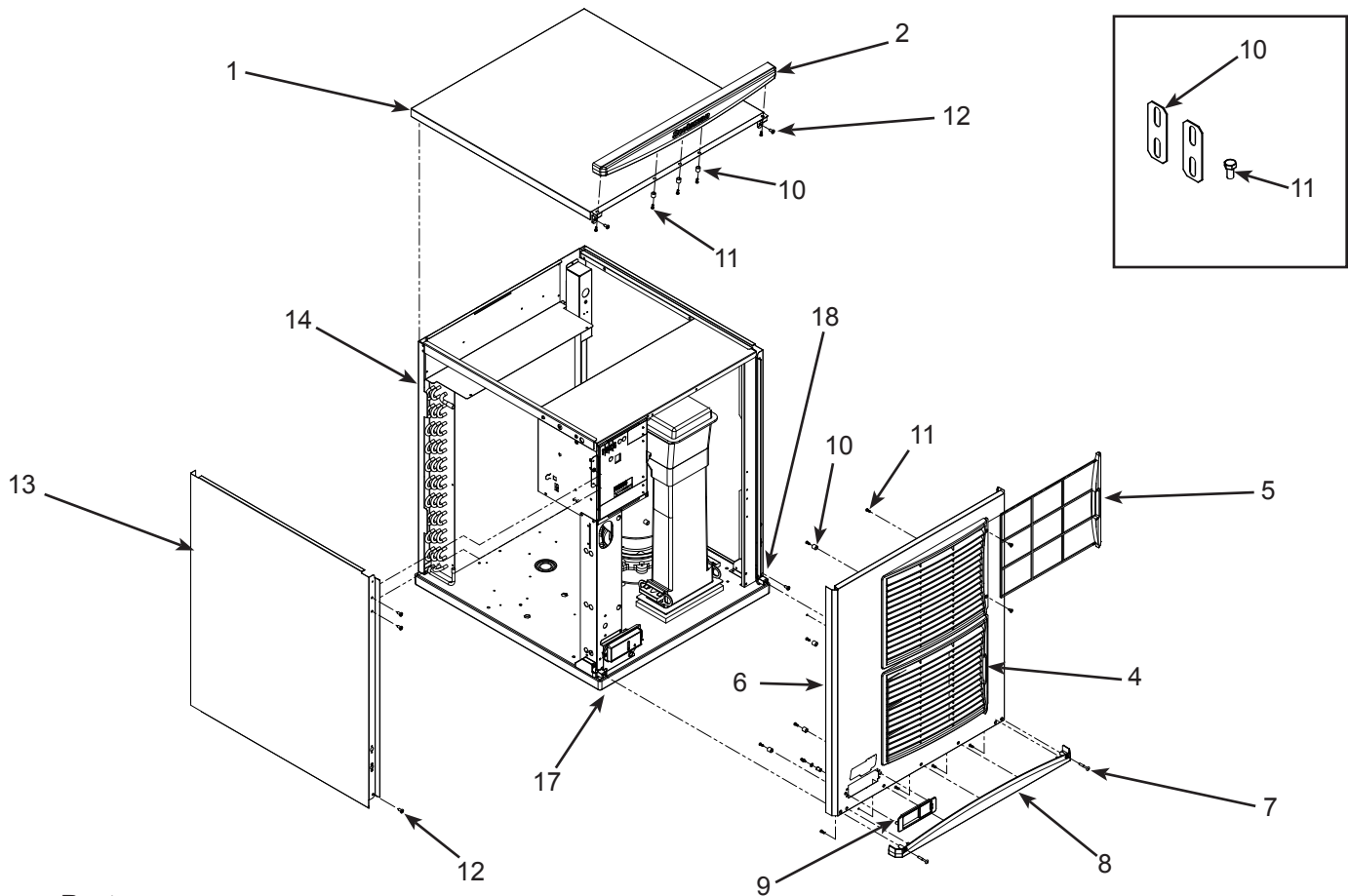


Item Number	Part Number	Description	Item Number	Part Number	Description
1	A40309-022	Top panel, includes item 2	13	A40310-023	Left side panel, WC or RC A-D series
2	<a href="#">02-4819-02</a>	Trim strip		A40310-021	Left side panel, WC or RC E series
3	A40335-021	Right side panel		A40310-021	Left side panel, AC A-D series,
4	<a href="#">02-4224-03</a>	Louvers		A40310-023	Left side panel, AC E series
5	<a href="#">02-4212-03</a>	Air filter	14	A39191-001	Back panel, WC or RC
6	A40308-025	Front panel, AC includes items 4, 5, 7, 8 and 9	15	A30911-015	Machine straps
6a	A40308-026	Front panel, WC or RC. Includes items 4, 5, 7, 8 and 9	16	<a href="#">03-1405-15</a>	Screw
7	<a href="#">03-1735-03</a>	Screw	17	<a href="#">02-4823-21</a>	*Panel mount kit, left
8	<a href="#">02-4820-02</a>	Tim strip	18	<a href="#">02-4823-22</a>	*Panel mount kit, right
9	<a href="#">02-4821-02</a>	Bezel, includes standard door	*Includes both screw receptacles		
9a	<a href="#">02-4822-01</a>	Door, bezel with handle			
9b	<a href="#">02-4822-02</a>	Door, bezel secure			
10	<a href="#">02-4824-01</a>	Spacer			
11	<a href="#">03-3836-02</a>	Screw			
12	<a href="#">03-1404-10</a>	Screw			

# N0422, F0522, N0622, F0822, N0922, F1222, N1322, F1522

## Service Parts

Exterior, N0922, F1222, N1322, F1522 D or E Series



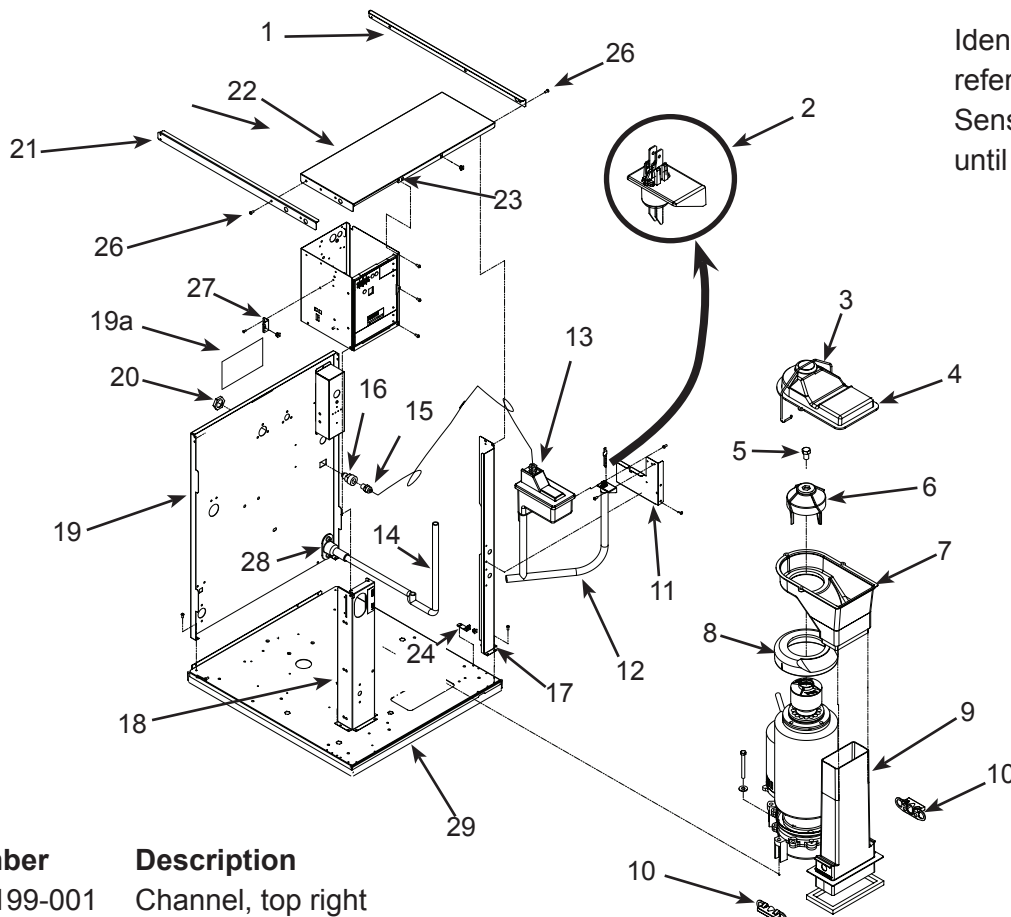
Item Number	Part Number	Description	
1	A40309-022	Top panel, includes item 2	
2	<a href="#">02-4819-02</a>	Trim strip	
3	A40335-022	Right side panel	
4	<a href="#">02-4224-03</a>	Louvers	
5	<a href="#">02-4212-03</a>	Air filter	
6	A40308-028	Front panel, AC includes items 4, 5, 7, 8 and 9	
6a	A40308-029	Front panel, WC or RC. Includes items 4, 5, 7, 8 & 9	
7	<a href="#">03-1735-03</a>	Screw	
8	<a href="#">02-4820-02</a>	Trim strip	
9	<a href="#">02-4821-02</a>	Bezel, includes standard door	
9a	<a href="#">02-4822-01</a>	Door, bezel with handle	
9b	<a href="#">02-4822-02</a>	Door, bezel secure	
10	<a href="#">02-4824-01</a>	Spacer	
11	<a href="#">03-3836-02</a>	Screw	
12	<a href="#">03-1404-10</a>	Screw	
13	A40310-025	Left side panel, AC	
	A40310-026	Left side panel, WC or RC	
14	A39194-001	Back panel, WC or RC	
15	A30911-015	Machine straps	
16	<a href="#">03-1405-15</a>	Screw	
17	<a href="#">02-4823-21</a>	*Panel mount kit, left	
18	<a href="#">02-4823-22</a>	*Panel mount kit, right	
		*Includes both screw receptacles	

# N0422, F0522, N0622, F0822, N0922, F1222, N1322, F1522

## Service Parts

Interior Cabinet, Water, and Chute Systems - **Clear Reservoir Cover**

Identification  
reference: Water  
Sensor in Hose. Used  
until June 2012.



Item Number	Part Number	Description	
1	A39199-001	Channel, top right	
2	<a href="#">02-4449-21</a>	Water sensor	
3	A34969-001	Bail clamp	
4	<a href="#">02-2930-04</a>	Chute cover	
5	<a href="#">03-1405-52</a>	Cap screw	
6	<a href="#">02-3001-01</a>	Ice sweep	
7	<a href="#">02-3841-01</a>	Ice chute	
8	<a href="#">13-0929-01</a>	Insulation collar, flakers	
	<a href="#">13-0929-02</a>	Insulation collar, nuggets	
9	<a href="#">02-2929-03</a>	Ice chute lower*	
	<a href="#">02-2929-04</a>	Ice chute lower**	
10	A37708-021	Bin control set (2)	
11	A39200-001	Reservoir bracket	
12	A39336-001	Evaporator inlet hose*	
	<a href="#">02-4338-01</a>	Evaporator inlet hose**	
13	<a href="#">02-3371-01</a>	Water reservoir & valve	
13a	<a href="#">02-3371-02</a>	Float and arm only	
13b	<a href="#">02-3266-03</a>	Plunger/seat only	
14	A39310-001	Drain hose*	
	<a href="#">02-4339-01</a>	Drain hose**	
15	<a href="#">16-1039-01</a>	Connector, male	
16	<a href="#">16-0835-01</a>	Flare fitting, male	
17	A39201-001	Post, right front *	
	A39182-001	Post, right front **	
18	A39196-001	Post, control box*	
	A39184-001	Post, control box**	
19	A39191-001	Back panel A-D series, WC, RC*	
	A40652-001	Back panel E series, WC, RC*	
	A39194-001	Back panel A-D series, WC, RC**	
19a	A40654-001	Back filler panel E series*	
20	<a href="#">03-1394-01</a>	Pal nut	
21	A39185-001	Channel, top left	
22	A39181-001	Control box cover	
23	<a href="#">03-3804-01</a>	Receptacle	
24	A38732-001	Panel mount	
25	<a href="#">13-0895-01</a>	Tubing, order 3	
25a	<a href="#">16-0871-01</a>	Brass insert, at float valve	
26	<a href="#">03-1531-01</a>	Screw	
27	A39025-001	Bracket	
28	<a href="#">02-3692-21</a>	Drain fitting	
29	<a href="#">02-4524-21</a>	Base, fits Tecumseh or Copeland RST - note RST used in B series	
	<a href="#">02-4524-22</a>	Base, fits Copeland CS	

\* for N0422, F0522, N0622, F0822

\*\* for N0922, F1222, N1322, F1522

September 2017

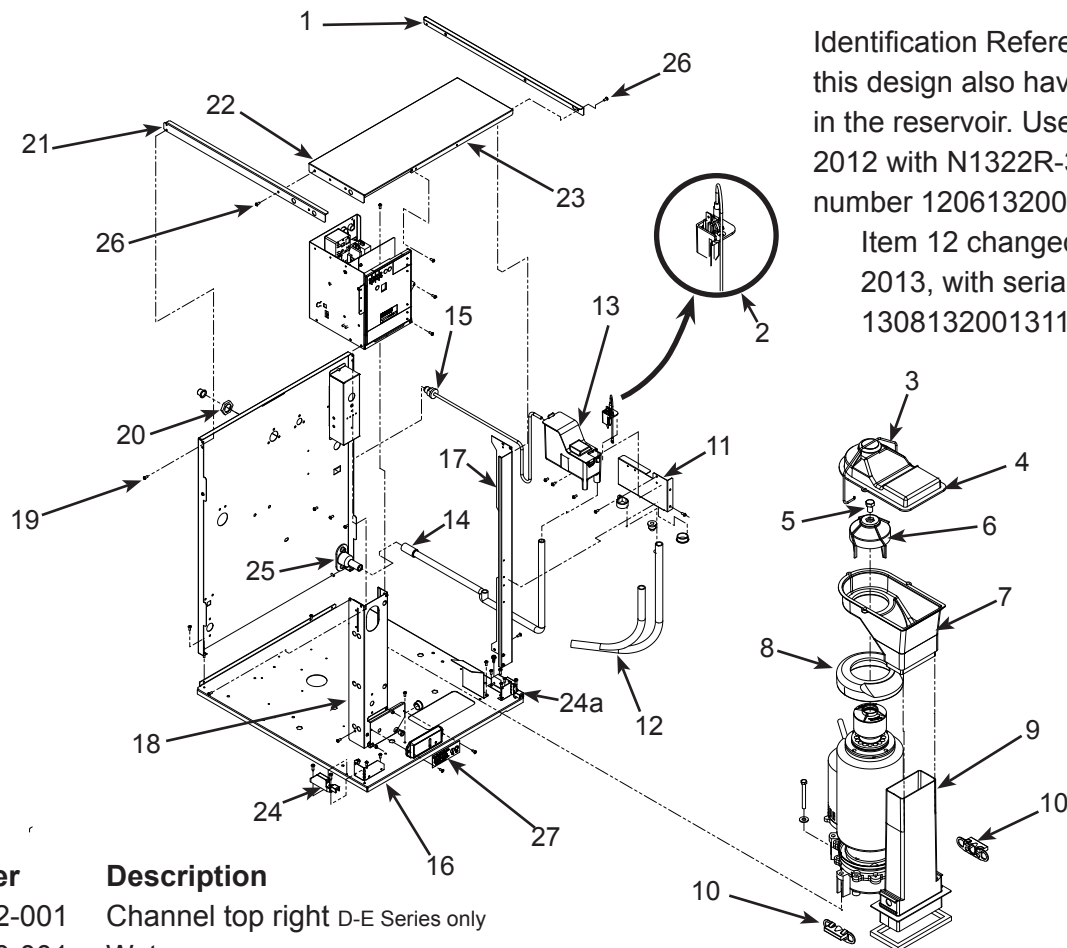
Page 6



# N0422, F0522, N0622, F0822, N0922, F1222, N1322, F1522

## Service Parts

### Interior Cabinet, Water, and Chute Systems - White Reservoir Cover & D or E Series



Identification Reference: Units with this design also have water sensor in the reservoir. Use began June 18, 2012 with N1322R-32A serial number 12061320013354.

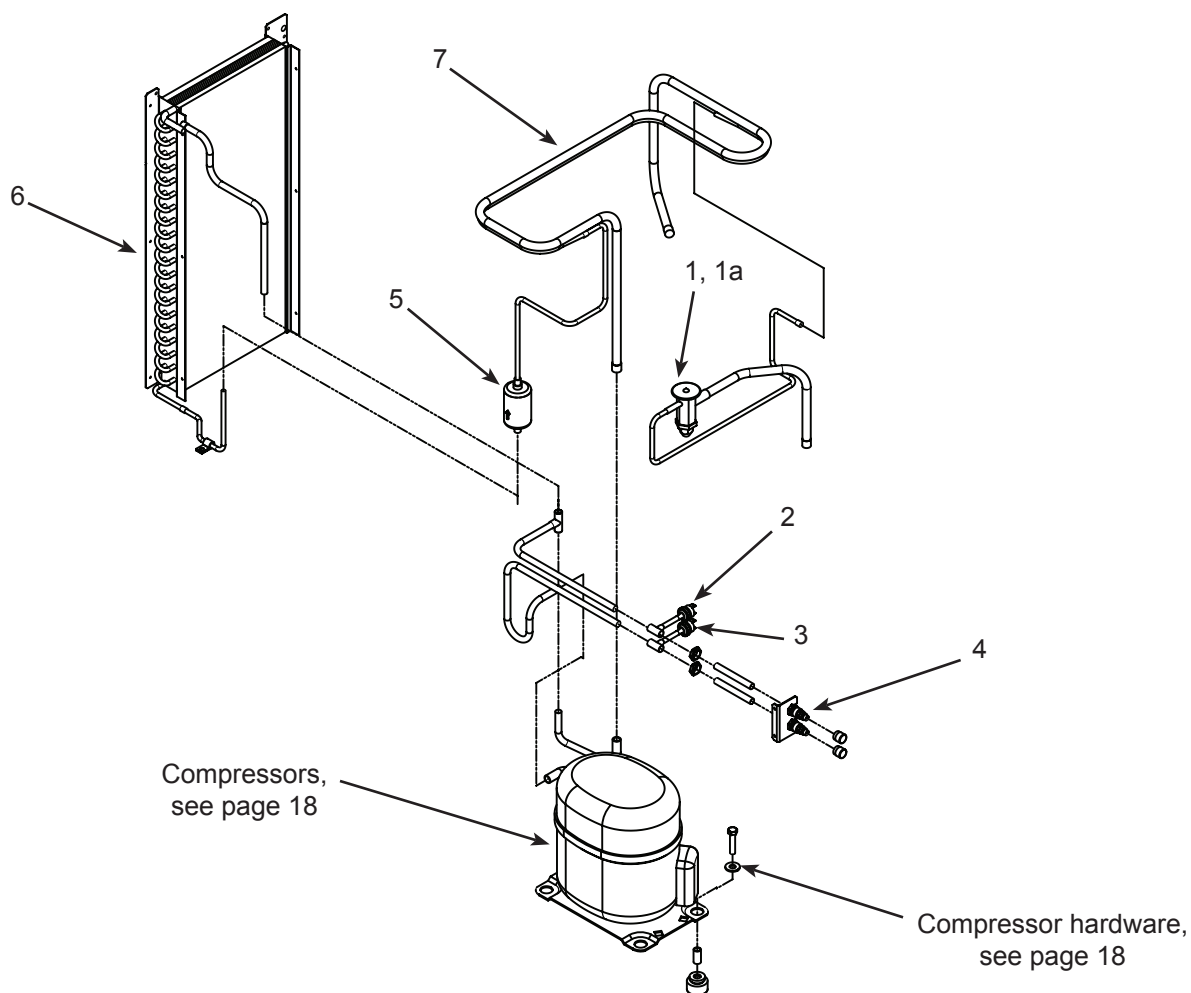
Item 12 changed August 2013, with serial number 13081320013114

Item Number	Part Number	Description	
1	A40362-001	Channel top right D-E Series only	
2	A39790-001	Water sensor	
3	A34969-001	Bail clamp	
4	<a href="#">02-2930-04</a>	Chute cover	
5	<a href="#">03-1405-52</a>	Cap screw	
6	<a href="#">02-3001-01</a>	Ice sweep	
7	<a href="#">02-3841-01</a>	Ice chute	
8	<a href="#">13-0929-01</a>	Insulation collar, flakers	
	<a href="#">13-0929-02</a>	Insulation collar, nuggets	
9	<a href="#">02-2929-03</a>	Ice chute lower*	
	<a href="#">02-2929-04</a>	Ice chute lower**	
10	A37708-021	Bin control set (2)	
11	A40029-001	Reservoir bracket	
12	A40189-001	Evaporator inlet hose*	
	<a href="#">02-4752-01</a>	Evaporator inlet hose**	
13	A39789-001	Water reservoir & valve	
13a	<a href="#">02-2217-02</a>	Float and arm only	
14	A40031-001	Drain hose*	
	<a href="#">02-4708-01</a>	Drain hose**	
15	<a href="#">16-1198-01</a>	Fitting only	
16	<a href="#">02-4524-21</a>	Base, fits Tecumseh or	
		Copeland RST - note RST used in B & D series	
16	<a href="#">02-4524-22</a>	Base, fits Copeland CS	
17	A39201-001	Post, right front *	
	A39182-001	Post, right front **	
18	A39196-001	Post, control box*	
	A39184-001	Post, control box**	
19	A39191-001	Back panel A-D series, WC, RC*	
	A40652-001	Back panel E series, WC, RC*	
	A39194-001	Back panel A-D series, WC, RC**	
19a	A40654-001	Back filler panel E series*	
	<a href="#">03-1394-01</a>	Pal nut	
20			
21	A40361-001	Channel, top left D Series only	
22	A39181-001	Control box cover	
23	<a href="#">03-3804-01</a>	Receptacle, use discontinued	
24	<a href="#">02-4823-21</a>	*Panel mount kit, left	
24a	<a href="#">02-4823-22</a>	*Panel mount kit, right	
		*Includes both screw receptacles	
25	<a href="#">02-3692-21</a>	Drain fitting	
26	<a href="#">03-1531-01</a>	Screw	
27	<a href="#">11-0622-21</a>	Lower light & sw panel	
		* for N0422, F0522, N0622, 22	
		** for N0922, F1222, N1322,	

# N0422, F0522, N0622, F0822, N0922, F1222, N1322, F1522

## Service Parts

Refrigeration Condensing, Air Cooled



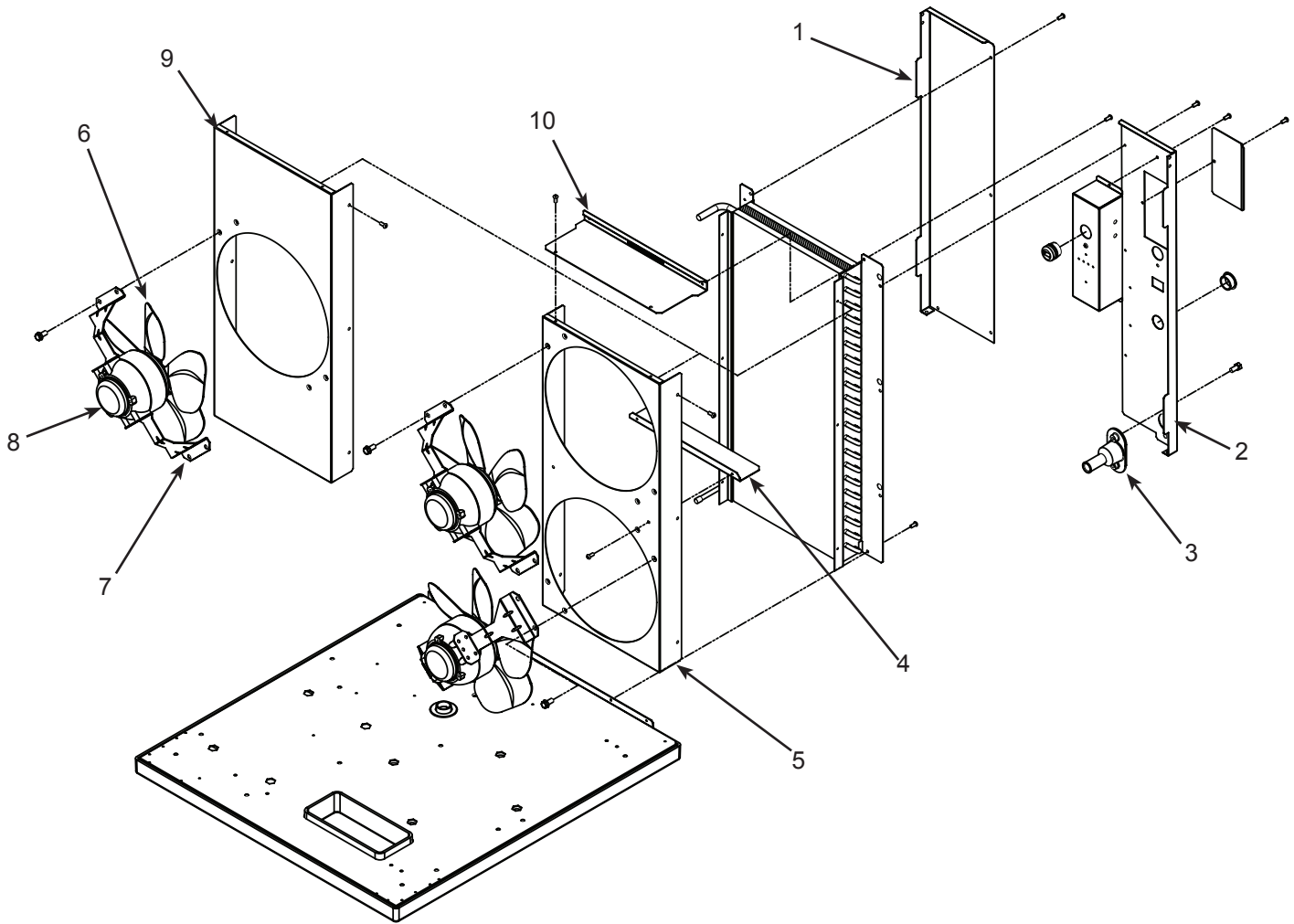
Item Number	Part Number	Description
1	<a href="#">16-1144-21</a>	TXV, N0422, F0522
	<a href="#">16-1144-22</a>	TXV, N0622, F0822
	<a href="#">16-1144-24</a>	TXV, N0922, F1222
	<a href="#">16-1144-23</a>	TXV, N1322, F1522
1a	<a href="#">02-4406-01</a>	Insulation, TXV
2	<a href="#">11-0501-22</a>	High pressure cut out sw
3	<a href="#">11-0502-21</a>	Low pressure cut out sw
4	<a href="#">16-1137-01</a>	Access valve seat
4a	<a href="#">16-1139-01</a>	Access valve core
4b	<a href="#">16-1140-01</a>	Access valve cap
5	<a href="#">02-3319-01</a>	Filter dryer
6	<a href="#">18-8890-01</a>	Air cooled condenser, fits N0422, F0522, N0622, F0822
	<a href="#">18-8935-01</a>	Air cooled condenser, fits N0922, F1222,
	<a href="#">18-8936-01</a>	Air cooled condenser, fits N1322, F1522
7	A39249-001	Suction line for Tecumseh
	A39249-002	Suction line for Copeland



# N0422, F0522, N0622, F0822, N0922, F1222, N1322, F1522

## Service Parts

Condenser Fan Motor System - N0422, F0522, N0622, F0822

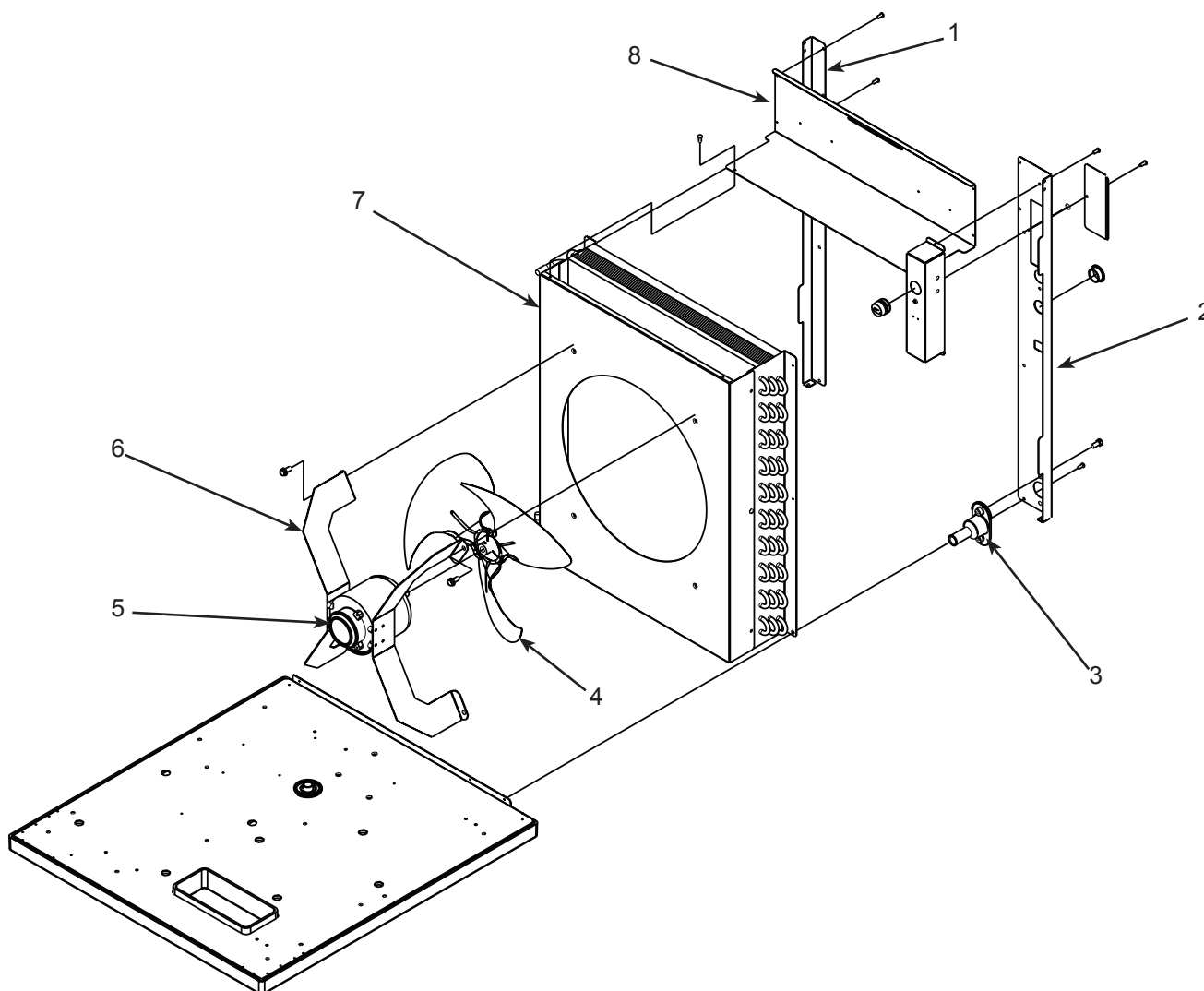


Item Number	Part Number	Description
1	A39186-001	Condenser flange A-D series
	A40651-001	Condenser flange E series
2	A39187-001	Condenser flange
3	<a href="#">02-3692-21</a>	Drain fitting
4	A38675-001	Shroud divider
5	A39351-001	Shroud, N0622, F0822
6	<a href="#">18-8836-01</a>	Fan blade
7	A38480-001	Bracket, fan motor
8	<a href="#">12-1681-23</a>	Fan motor, 115 volt
	<a href="#">12-1681-04</a>	Fan motor, 208-230 volt/50 or 60 Hz
9	A39350-001	Shroud, N0422, F0522
10	A39352-001	Shroud top

# N0422, F0522, N0622, F0822, N0922, F1222, N1322, F1522

## Service Parts

Condenser Fan Motor System, N0922, F1222, N1322, F1522

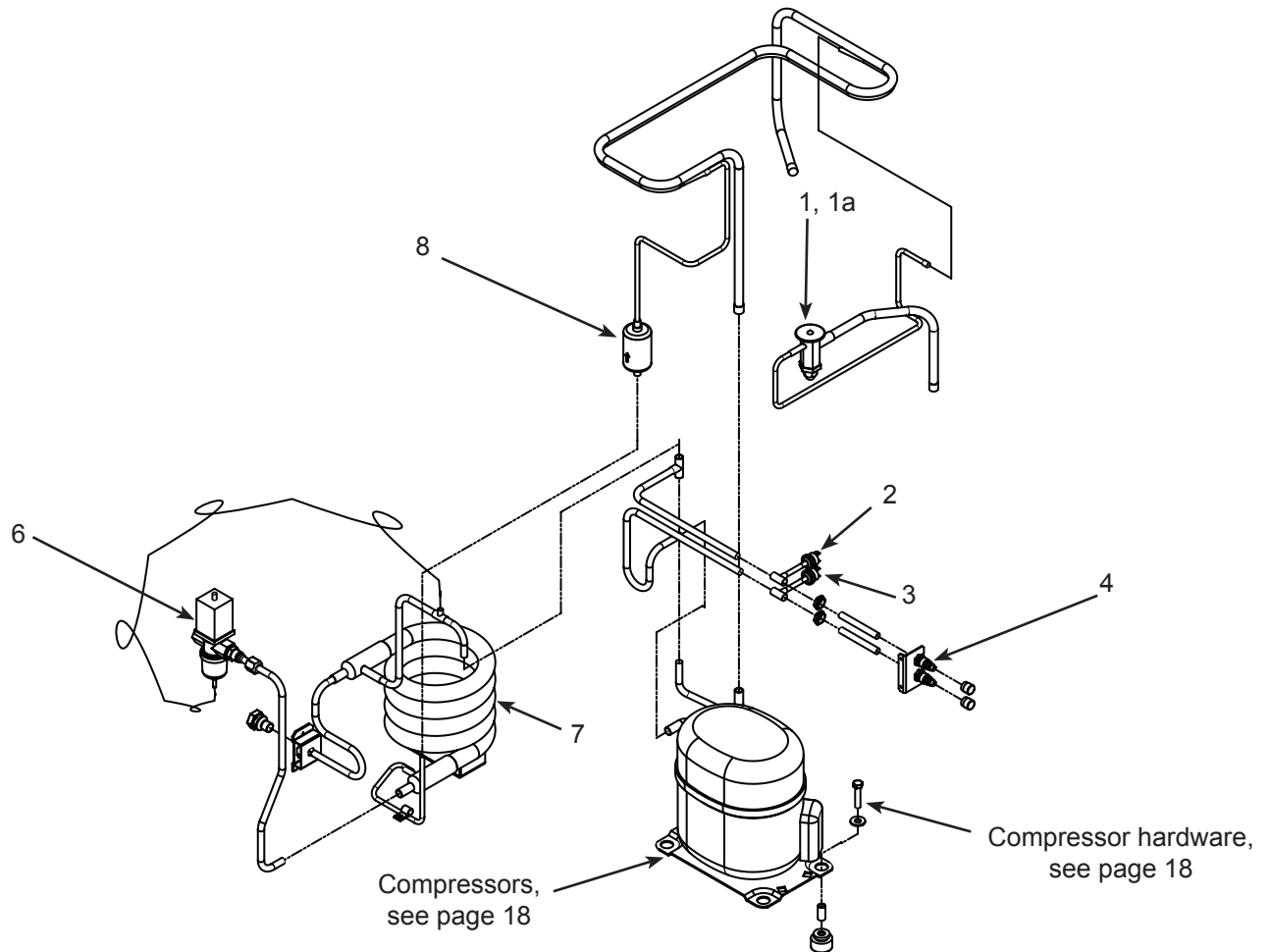


Item	Part	
Number	Number	Description
1	A39188-001	Condenser flange
2	A39189-001	Condenser flange
3	<a href="#">02-3692-21</a>	Drain fitting
4	<a href="#">18-8882-01</a>	Fan blade
5	<a href="#">18-8927-01</a>	Fan motor
6	A40156-001	Bracket, fan motor
7	A39193-001	Shroud
8	A39353-001	Shroud top

# N0422, F0522, N0622, F0822, N0922, F1222, N1322, F1522

## Service Parts

### Refrigeration Condensing, Water Cooled

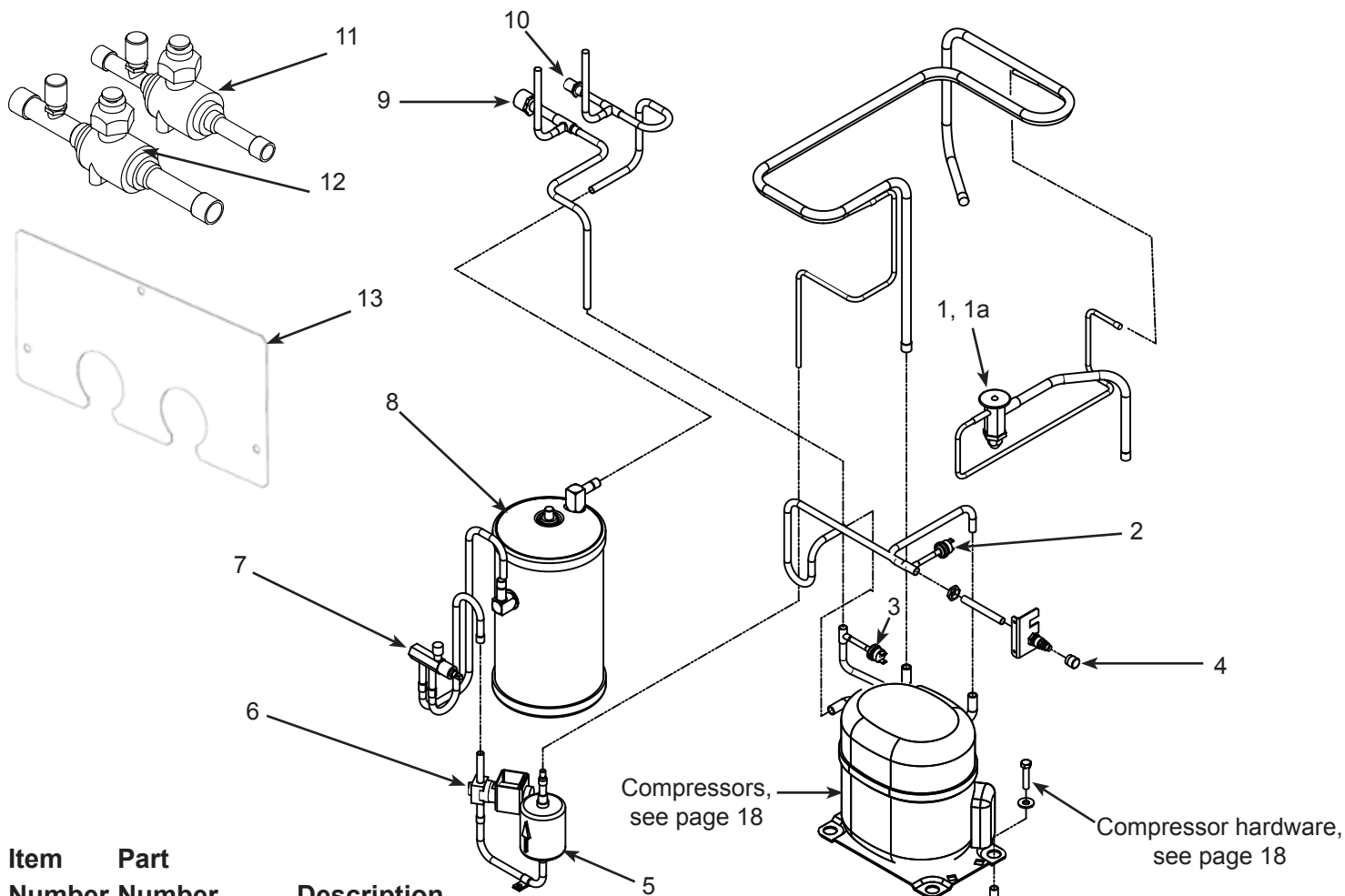


Item Number	Part Number	Description
1	<a href="#">16-1144-21</a>	TXV, N0422, F0522
	<a href="#">16-1144-22</a>	TXV, N0622, F0822
	<a href="#">16-1144-24</a>	TXV, N0922, F1222
	<a href="#">16-1144-23</a>	TXV, N1322, F1522
1a	<a href="#">02-4406-01</a>	Insulation, TXV
2	<a href="#">11-0501-22</a>	High pressure cut out sw
3	<a href="#">11-0502-21</a>	Low pressure cut out sw
4	<a href="#">16-1137-01</a>	Access valve seat
4a	<a href="#">16-1139-01</a>	Access valve core
4b	<a href="#">16-1140-01</a>	Access valve cap
5	<a href="#">16-1154-22</a>	Condenser drain fitting
6	<a href="#">11-0608-21</a>	Water regulating valve A-D Series
6a	<a href="#">11-0608-24</a>	Water regulating valve E Series
7	<a href="#">18-8871-21</a>	Condenser, water cooled fits N0422, F0522, N0622, F0822, N0922, F1222
	<a href="#">18-8893-21</a>	Condenser, water cooled fits N1322 and F1522
	<a href="#">16-0874-01</a>	Receiver, not shown, fits F1222W or N0922W

# N0422, F0522, N0622, F0822, N0922, F1222, N1322, F1522

## Service Parts

Refrigeration Condensing, Remote Cooled



Item Number Part Number

Description

1	<a href="#">16-1144-22</a>	TXV, N0622, F0822
	<a href="#">16-1144-24</a>	TXV, N0922, F1222
	<a href="#">16-1144-23</a>	TXV, N1322, F1522
1a	<a href="#">02-4406-01</a>	Insulation, TXV
2	<a href="#">11-0502-21</a>	Low pressure cut out sw
3	<a href="#">11-0501-22</a>	High pressure cut out sw
4	<a href="#">16-1137-01</a>	Access valve seat
4a	<a href="#">16-1139-01</a>	Access valve core
4b	<a href="#">16-1140-01</a>	Access valve cap
5	<a href="#">02-3319-02</a>	Filter dryer
6	<a href="#">11-0493-01</a>	Liquid line solenoid valve, 208-
		230 volt, 50/60 Hz
	<a href="#">12-2719-22</a>	230 volt coil
	<a href="#">11-0493-02</a>	Liquid line solenoid valve, 115
		volt
	<a href="#">12-2719-21</a>	115 volt coil
	<a href="#">12-2733-30</a>	LLV/HGV rebuild kit
7	<a href="#">16-1030-01</a>	Receiver outlet valve
8	<a href="#">16-1176-01</a>	Receiver

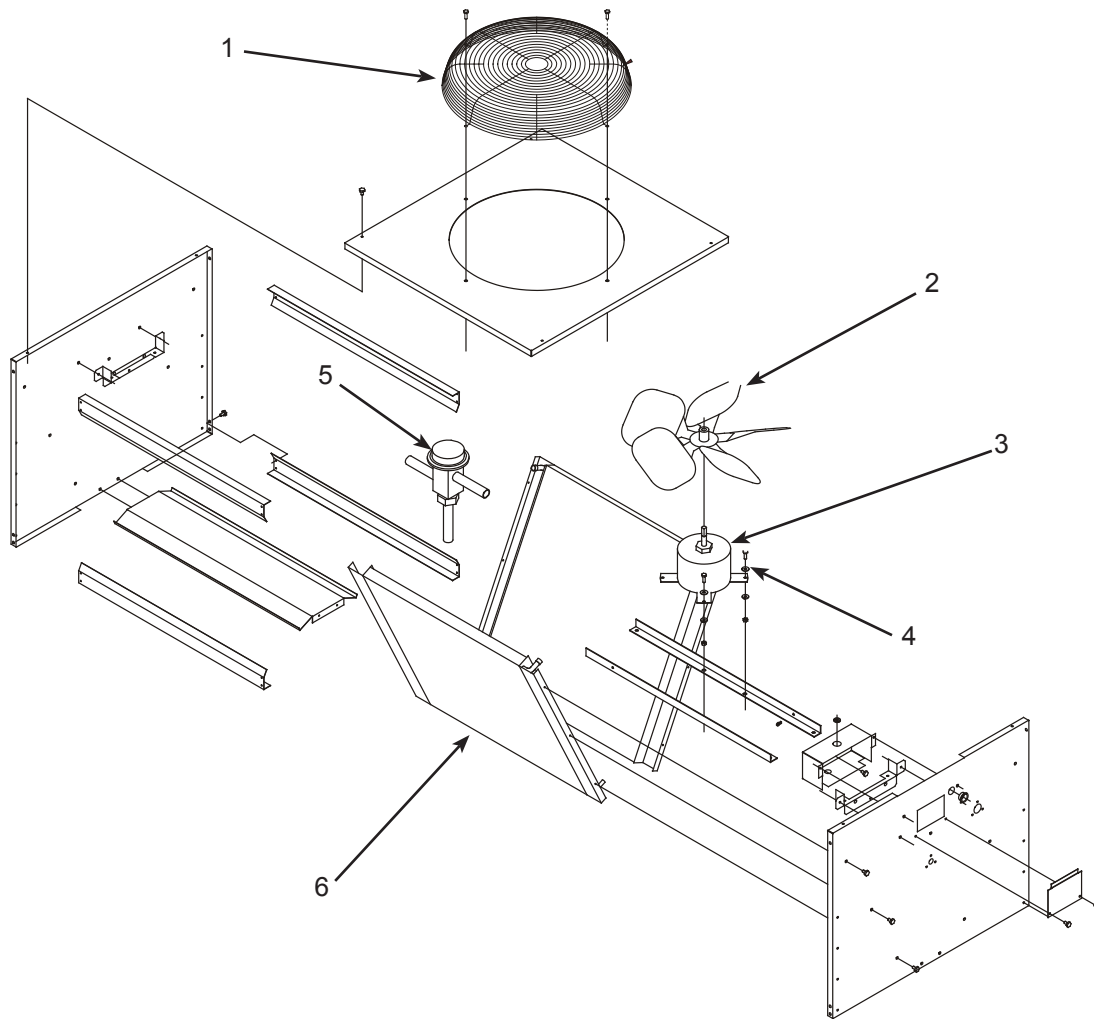
E Series

8a	A37211-001	Bracket, receiver top
8b	A37212-001	Bracket, receiver bottom
9	<a href="#">16-0850-01</a>	Discharge quick connect A-D Series
10	<a href="#">16-0850-03</a>	Liquid quick connect A-D Series
11	<a href="#">16-1208-01</a>	Isolation valve 3/8
12	<a href="#">16-1208-02</a>	Isolation valve 1/2
13	A40508-001	Isolation valves cover order 2
14	A40507-001	Isolation valves bracket

# N0422, F0522, N0622, F0822, N0922, F1222, N1322, F1522

## Service Parts

Remote Condenser - ERC111 or ERC311



Item Number	Part Number	Description
1	<a href="#">02-3575-01</a>	Fan guard
2	<a href="#">18-8816-01</a>	Fan blade
3	<a href="#">12-2651-01</a>	Fan motor - ERC311 (208-230 volt)
	<a href="#">12-2651-02</a>	Fan motor - ERC111 (115 volt)
4	<a href="#">03-1405-08</a>	Screw
5	<a href="#">11-0422-22</a>	Headmaster
6	<a href="#">18-8827-01</a>	Coil

Not shown:

NS1 A37169-001 Leg

NS2 A37170-001 Leg brace

NS3 [03-1645-01](#) Screw for legs

NS4 [16-0850-01](#) Quick disconnect, discharge A-D Series

NS5 [16-0850-03](#) Quick disconnect, liquid A-D Series

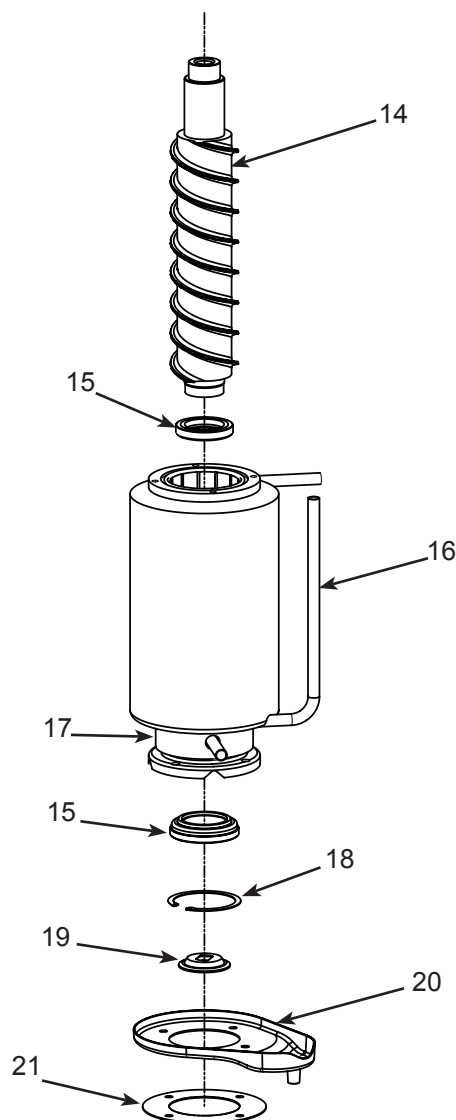
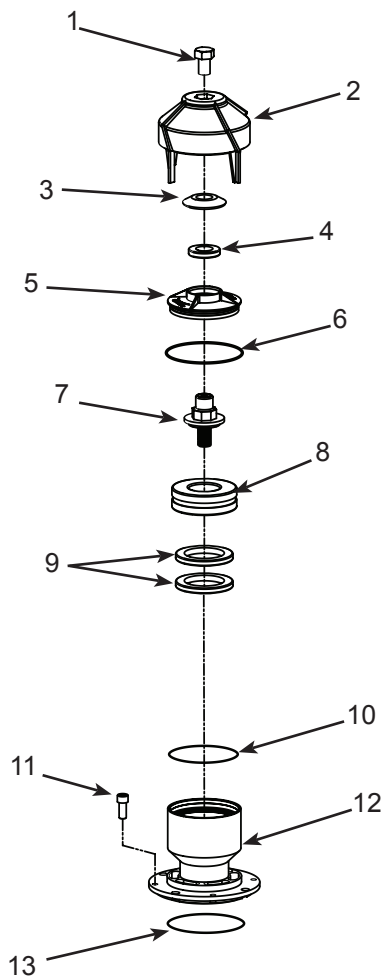
NS6 [16-1057-01](#) Line set tube end, discharge A-D Series

NS7 [16-1057-02](#) Line set tube end, liquid A-D Series

# N0422, F0522, N0622, F0822, N0922, F1222, N1322, F1522

## Service Parts

### Nugget Evaporator System, N0422, N0622, N0922, N1322



Item Number	Part Number	Description
1	<a href="#">03-1405-52</a>	Cap screw
2	<a href="#">02-3001-01</a>	Ice sweep
3	<a href="#">13-0871-01</a>	Water shed
4	<a href="#">02-2978-01</a>	Lip seal
5	<a href="#">02-3128-20</a>	Cover, includes item 4
6	<a href="#">13-0617-54</a>	O-ring
7	<a href="#">08-0660-01</a>	Auger stud
8	<a href="#">A34559-020</a>	Bearing
9	<a href="#">02-2977-01</a>	Lip seal
10	<a href="#">13-0617-52</a>	O-ring - to chute
11	<a href="#">03-1544-08</a>	Screw, socket head

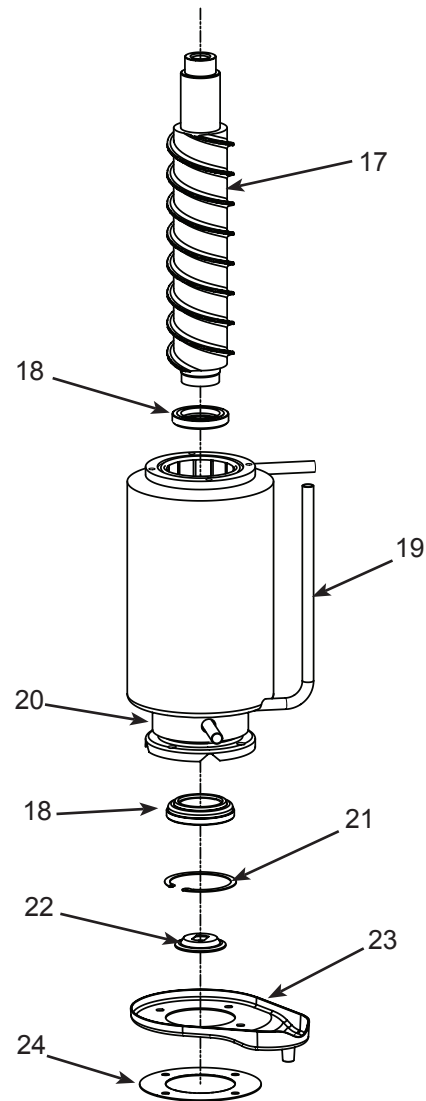
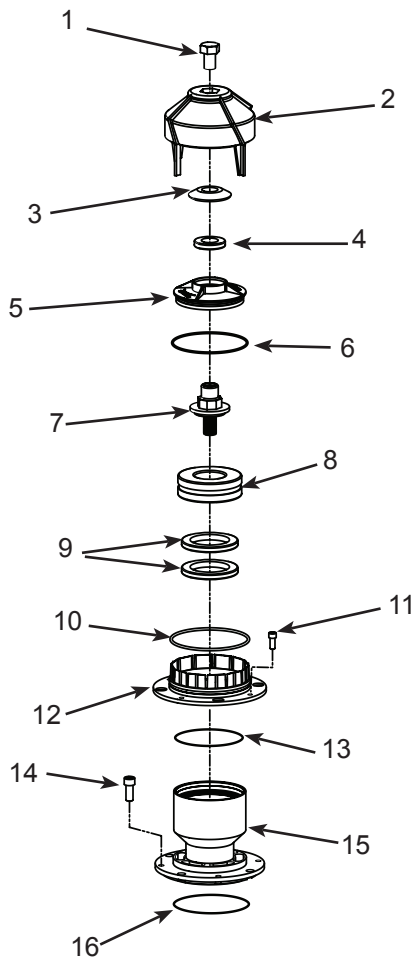
12	<a href="#">A32900-020</a>	Nugget breaker assembly, includes items 3,4,5,6,8,9 and 13
13	<a href="#">13-0617-45</a>	O-ring
14	<a href="#">A38071-021</a>	Auger, N0422, N0622
	<a href="#">A38071-022</a>	Auger, N0922, N1322
15	<a href="#">02-0929-23</a>	Water seal
16	<a href="#">02-4350-21</a>	Evaporator, N0422, N0622
	<a href="#">02-4352-21</a>	Evaporator, N0922, N1322
16a	<a href="#">03-1405-41</a>	Cap screw to gear box
17	<a href="#">02-4358-01</a>	Collar
18	<a href="#">A32777-001</a>	Retaining ring
19	<a href="#">02-4663-01</a>	Water shed
20	<a href="#">02-3837-01</a>	Drip pan
21	<a href="#">13-0704-00</a>	Gasket



# N0422, F0522, N0622, F0822, N0922, F1222, N1322, F1522

## Service Parts

### Evaporator System, Flakers F0522, F0822, F1222, F1522

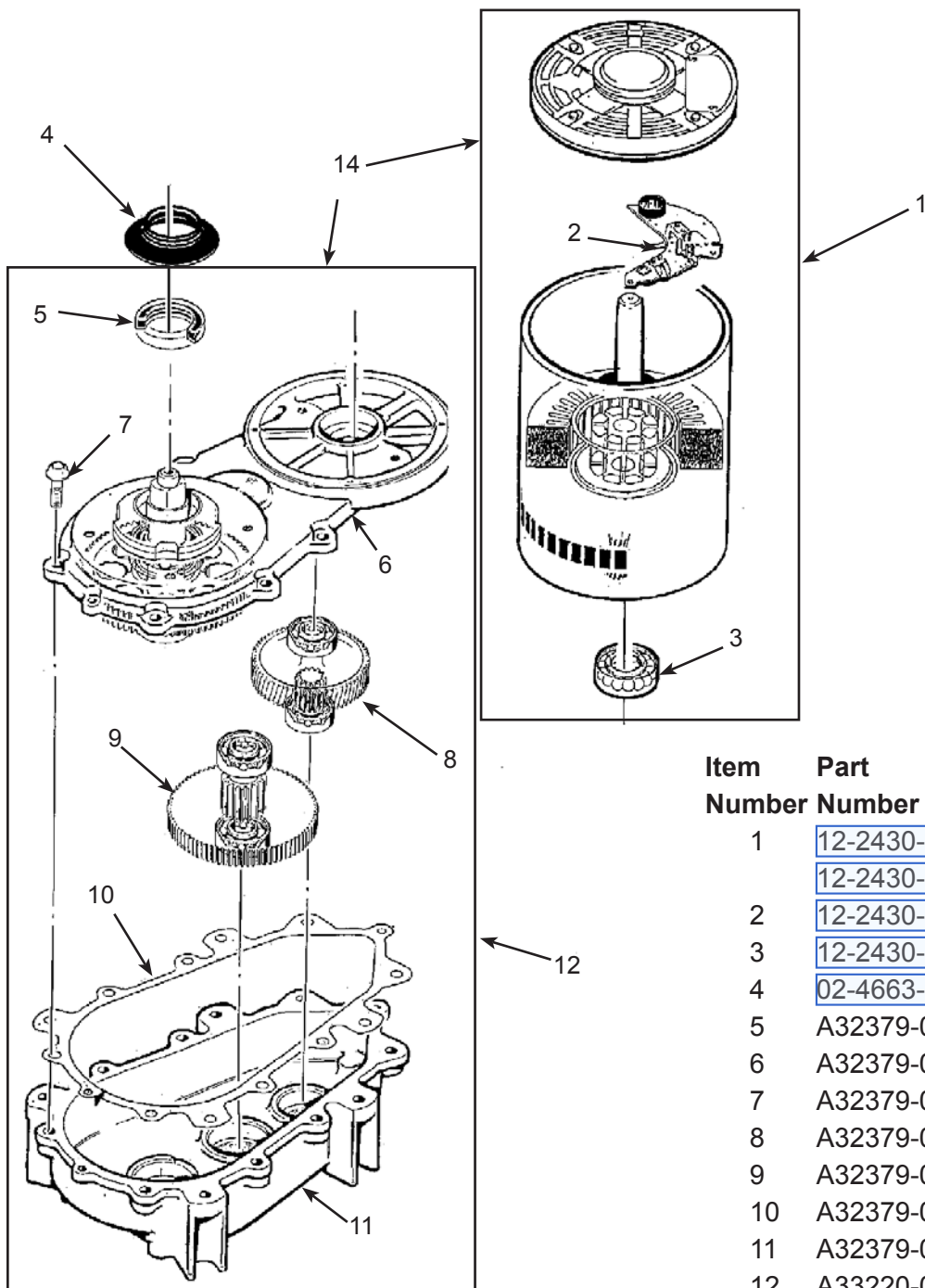


Item Number	Part Number	Description
1	<a href="#">03-1405-52</a>	Cap screw
2	<a href="#">02-3001-01</a>	Ice sweep
3	<a href="#">13-0871-01</a>	Water shed
4	<a href="#">02-2978-01</a>	Lip seal
5	<a href="#">02-3128-20</a>	Cover, includes item 4
6	<a href="#">13-0617-54</a>	O-ring
7	<a href="#">08-0660-01</a>	Auger stud
8	A34559-020	Bearing
9	<a href="#">02-2977-01</a>	Lip seal
10	<a href="#">13-0617-52</a>	O-ring, to chute
11	<a href="#">03-1403-27</a>	Screw
12	<a href="#">02-2916-01</a>	Slotted collar
13	<a href="#">13-0617-49</a>	O-ring, under slotted collar
14	<a href="#">03-1544-08</a>	Screw, socket head

15	A34505-020	Flaker breaker assembly, includes items 3,4,5,6,8,9, and 16
16	<a href="#">13-0617-45</a>	O-ring
17	A38071-021	Auger, F0522, F0822
	A38071-022	Auger, F1222, F1522
18	<a href="#">02-0929-23</a>	Water seal
19	<a href="#">02-4350-21</a>	Evaporator, F0522, F0822
	<a href="#">02-4352-21</a>	Evaporator, F1222, F1522
19a	<a href="#">03-1405-41</a>	Cap screw to gear box
20	<a href="#">02-4358-01</a>	Collar
21	A32777-001	Retaining ring
22	<a href="#">02-4663-01</a>	Water shed
23	<a href="#">02-3837-01</a>	Drip pan
24	<a href="#">13-0704-00</a>	Gasket

# N0422, F0522, N0622, F0822, N0922, F1222, N1322, F1522

## Service Parts Gear Reducer and Motor



Item Number	Part Number	Description
1	<a href="#">12-2430-21</a> +	Drive motor, 115 volt
	<a href="#">12-2430-22</a> +	Drive Motor, 208-230 volt
2	<a href="#">12-2430-44</a>	Start switch
3	<a href="#">12-2430-29</a>	Bearing
4	<a href="#">02-4663-01</a>	Water Shed
5	A32379-029*	Seal
6	A32379-022	Gearcase Cover*
7	A32379-026	Bolt
8	A32379-024	First Gear & Bearings
9	A32379-023	2nd Gear & Bearings
10	A32379-021	Gasket
11	A32379-020	Gear Case
12	A33220-030	Gearcase kit, assembled w/out motor, includes item 13
13	A32379-027	Oil, 1 Container
14	A33220-021**	Complete 115 volt
	A33220-022**	Complete 208-230 volt

\* Cover includes output shaft, seal, gear and bearings.

If water has flowed thru the seal, the gearcase cover assembly should be replaced, not just the seal.

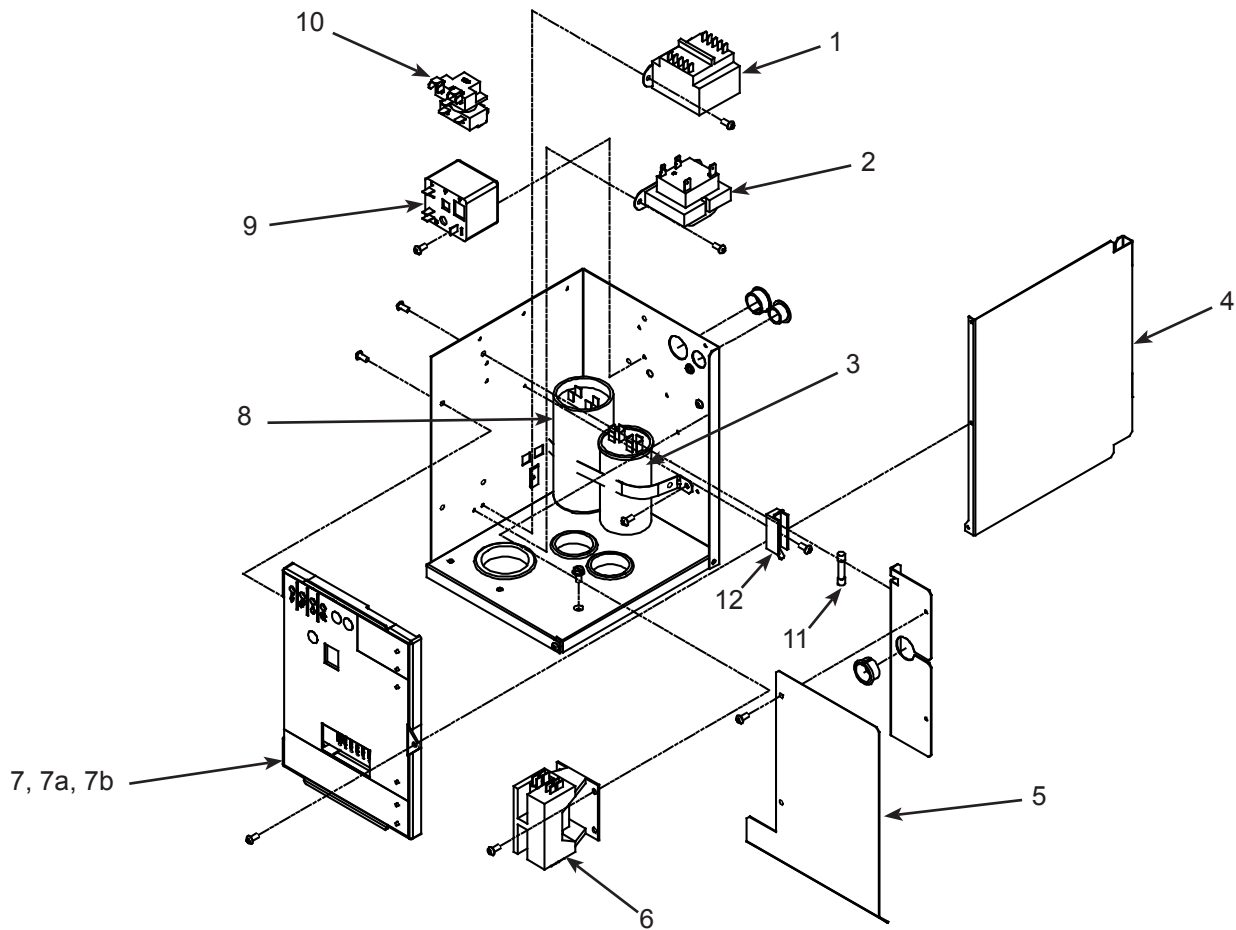
\*\* Includes items 1, 12, and is charged with gear oil.

Oil Charge is 14 Oz.



## Service Parts

### Electrical & Control Box



Item Number	Part Number	Description	Harnesses (not shown)
1	<a href="#">12-2639-01</a>	Transformer, 50 Hz	NS1 <a href="#">12-2976-01</a> Low voltage harness
2	<a href="#">12-2924-01</a>	Transformer, 115 v	NS2 <a href="#">12-2994-01</a> High voltage harness, AW
	<a href="#">12-2924-02</a>	Transformer, 208-230 60 Hz	NS3 <a href="#">12-2966-01</a> High voltage harness, Rem
3	see page 15	Run capacitor	
4	A39198-001	Side cover	
5	A39216-001	Shield	
6	<a href="#">12-2469-03</a>	Contactor, 115 volt	
	<a href="#">12-2469-02</a>	Contactor, 208-230 volt 60 Hz, single phase	
	<a href="#">12-2533-02</a>	Contactor, 3 phase	
7	<a href="#">11-0575-22</a>	Controller for A or B series.	
	<a href="#">11-0623-21</a>	Controller for Prodigy Plus D series and all prior	
7a	<a href="#">02-4407-01</a>	Graphic overlay	
7b	<a href="#">02-4076-01</a>	Control box door	
8	see next page	Start capacitor	
9	see next page	Potential relay	
10	see next page	Start relay	
11	<a href="#">12-2686-01</a>	Fuse, 50 Hz only	
12	<a href="#">12-2687-01</a>	Fuse block, 50 Hz only	

# N0422, F0522, N0622, F0822, N0922, F1222, N1322, F1522

## Service Parts

### Compressors

Model	Series	Electrical	Compressor	Overload	Relay	Start Cap	Run Cap
N0422, F0522 -1	A or D	115/60/1	<a href="#">18-8929-21</a>	<a href="#">18-8929-23</a>	<a href="#">18-1903-64</a>	<a href="#">18-1901-63</a>	not used
N0622, F0822 -1	A	115/60/1	<a href="#">18-8921-21</a>	<a href="#">18-8921-23</a>	<a href="#">18-1903-68</a>	<a href="#">18-1901-55</a>	<a href="#">18-1902-45</a>
N0622, F0822 -32	A	208-230/60/1	<a href="#">18-8921-22</a>	<a href="#">18-8774-28</a>	<a href="#">18-1903-67</a>	<a href="#">18-1901-56</a>	<a href="#">18-1902-68</a>
N0622, F0822 -6	A	230/50/1	<a href="#">18-8921-26</a>	<a href="#">18-8774-27</a>	<a href="#">18-1903-66</a>	<a href="#">18-1901-56</a>	<a href="#">18-1902-68</a>
N0622, F0822 -1	B* or D	115/60/1	<a href="#">18-8949-21</a>	<a href="#">18-8949-50</a>	<a href="#">18-1903-44</a>	<a href="#">18-1901-65</a>	<a href="#">18-1902-64</a>
N0622, F0822 -32	B* or D	208-230/60/1	<a href="#">18-8949-22</a>	<a href="#">18-8949-51</a>	<a href="#">18-1903-54</a>	<a href="#">18-1901-66</a>	<a href="#">18-1902-30</a>
N0622, F0822 -6	B* or D	230/50/1	<a href="#">18-8949-23</a>	<a href="#">18-8949-52</a>	<a href="#">18-1903-70</a>	<a href="#">18-1901-52</a>	<a href="#">18-1902-65</a>
N0922, F1222 -32	A	208-230/60/1	<a href="#">18-8922-22</a>	<a href="#">18-8922-27</a>	<a href="#">18-1903-44</a>	<a href="#">18-1901-66</a>	<a href="#">18-1902-45</a>
N0922, F1222 -3	A	208-230/60/3	<a href="#">18-8813-25</a>	Internal	-	-	-
N0922, F1222 -6	A	230/50/1	<a href="#">18-8922-26</a>	Internal	<a href="#">18-1903-69</a>	<a href="#">18-1901-66</a>	<a href="#">18-1902-71</a>
N0922, F1222 -32	B** or D	208-230/60/1	<a href="#">18-8955-22</a>	Internal	<a href="#">18-1903-54</a>	<a href="#">18-1901-20</a>	<a href="#">18-1902-67</a>
N0922, F1222 -3	B** or D	208-230/60/3	<a href="#">18-8955-23</a>	<a href="#">18-8955-53</a>	-	-	-
N0922, F1222 -6	B** or D	230/50/1	<a href="#">18-8955-26</a>	Internal	<a href="#">18-1903-71</a>	<a href="#">18-1901-66</a>	<a href="#">18-1902-63</a>
N1322, F1522 -32	A or D	208-230/60/1	<a href="#">18-8749-22</a>	Internal	<a href="#">18-1903-46</a>	<a href="#">18-1901-48</a>	<a href="#">18-1902-70</a>
N1322, F1522 -6	A or D	230/50/1	<a href="#">18-8749-27</a>	Internal	<a href="#">18-1903-33</a>	<a href="#">18-1901-48</a>	<a href="#">18-1902-70</a>

\* B series production began July 2011 \*\* B series production began April 2014

### Compressor Mounting Hardware

Model	Bolt	Grommet	Washer	Sleeve
N0422, F0522, N0622, F0822	<a href="#">03-1405-20</a>	<a href="#">18-4700-28</a>	<a href="#">03-1407-07</a>	<a href="#">18-0108-41</a>
N0622, F0822 B	<a href="#">03-1405-20</a>	<a href="#">18-2200-28</a>	<a href="#">03-1407-07</a>	<a href="#">18-2200-27</a>
N0922, F1222 -32	<a href="#">03-1405-20</a>	<a href="#">18-4700-28</a>	<a href="#">03-1407-07</a>	<a href="#">18-0108-41</a>
N0922, F1222 -3	<a href="#">03-1405-20</a>	<a href="#">18-2300-27</a>	<a href="#">03-1407-07</a>	<a href="#">18-2300-26</a>
N1322, F1522 -32	<a href="#">03-1405-20</a>	<a href="#">18-2300-27</a>	<a href="#">03-1407-07</a>	<a href="#">18-2300-26</a>

### Crankcase Heaters

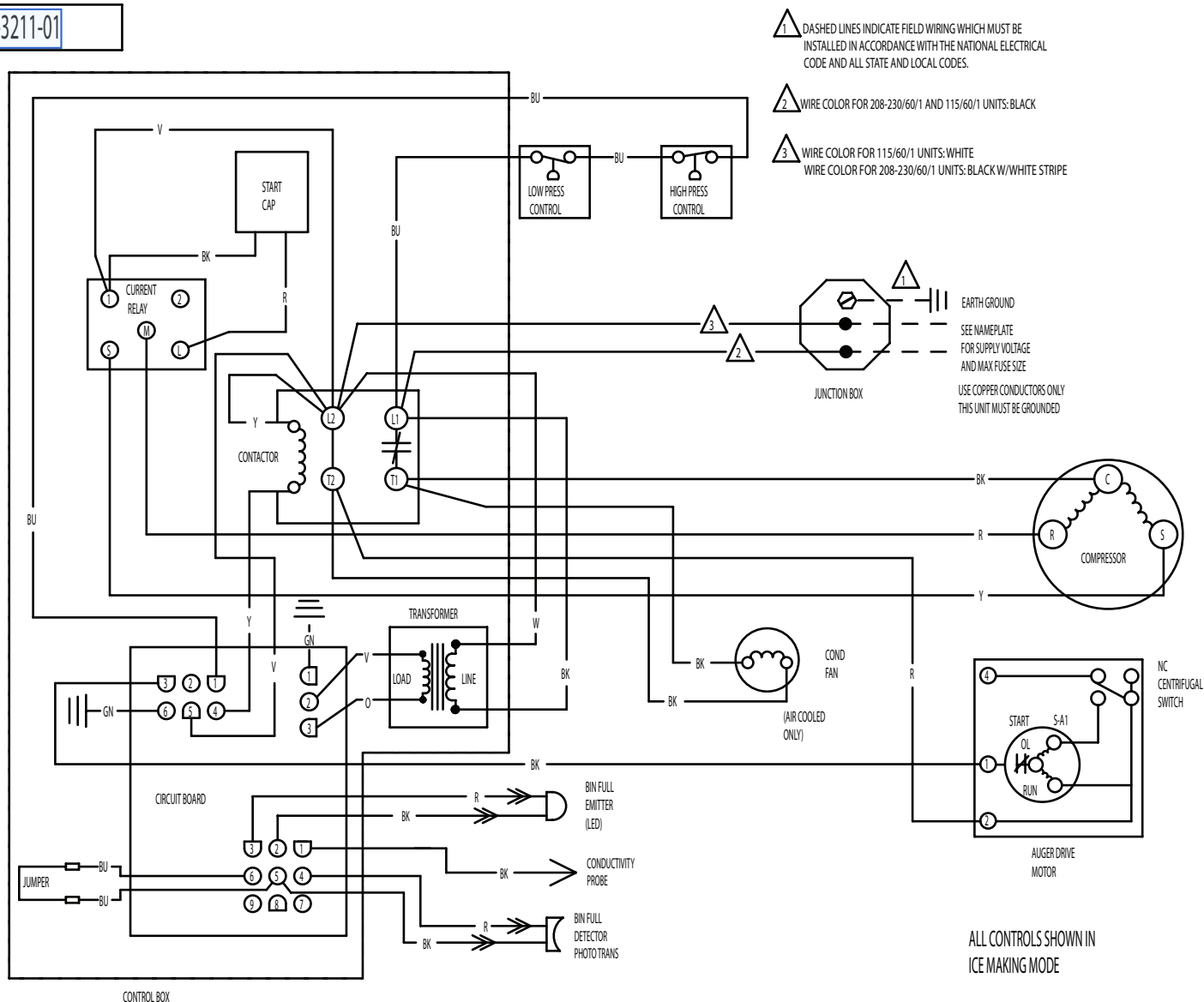
Model	Series	Voltage	Heater
N0622R-1, F0822R-1	A	115	<a href="#">12-2942-01</a>
N0622R-32, F0822R-32	A	230	<a href="#">12-2942-02</a>
N0622R-1, F0822R-1	B or D	115	<a href="#">12-3043-01</a>
N0622R-32, F0822R-32, N0922R, F1222R -3 or -32	B or D	230	<a href="#">12-3043-02</a>
N0922R-32, F1222R-32	A	230	<a href="#">12-2942-02</a>
N0922R-3, F1222R-3	A	230, 3 phase	<a href="#">12-3043-03</a>
N1322R -32, -3, F1522R-32, -3	A or D	230	<a href="#">12-3043-03</a>

# N0422, F0522, N0622, F0822, N0922, F1222, N1322, F1522

## Service Parts

### Wiring Diagram N0422 and F0522 A Series

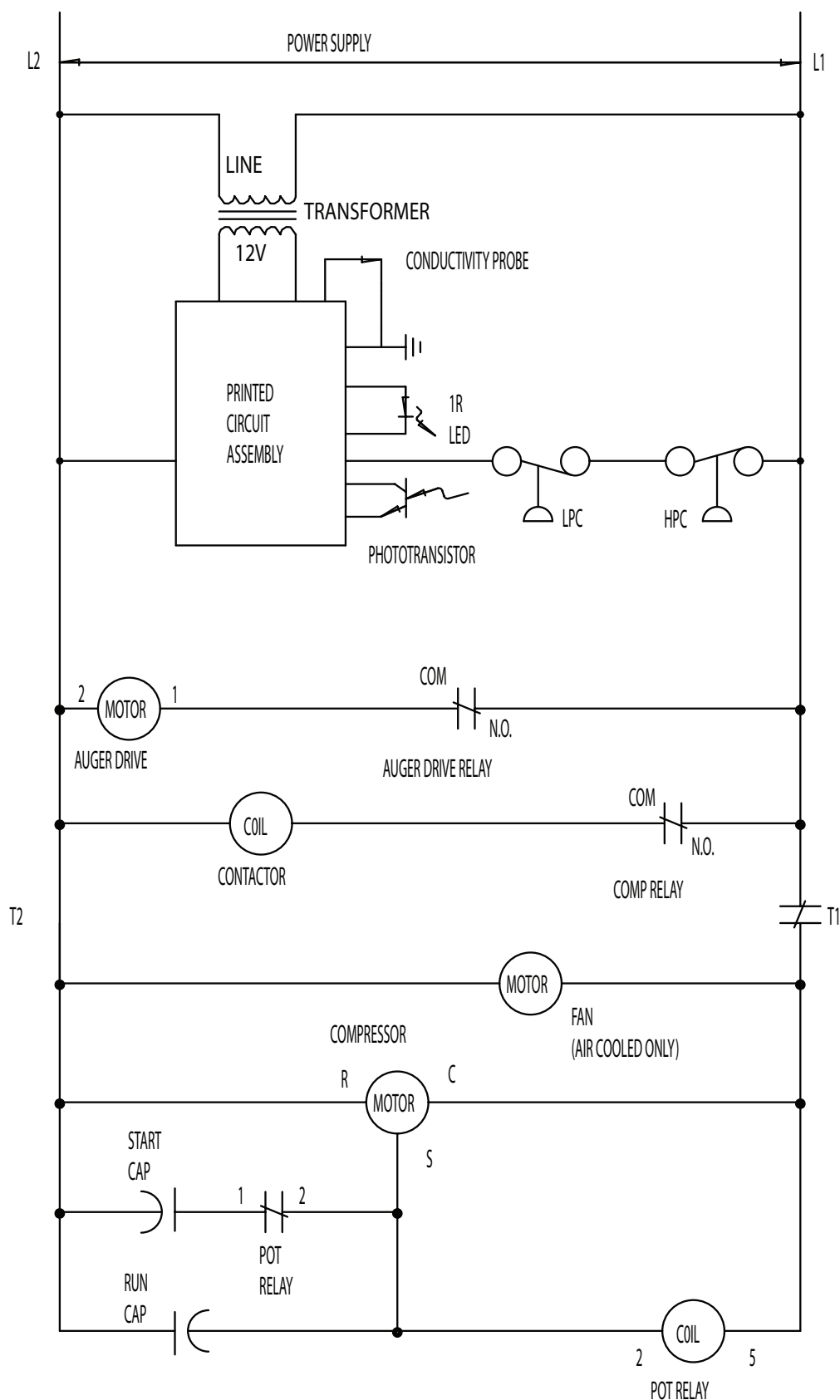
17-3211-01



# N0422, F0522, N0622, F0822, N0922, F1222, N1322, F1522

## Service Parts

### Schematic Diagram N0422 or F0522 A Series





# N0422, F0522, N0622, F0822, N0922, F1222, N1322, F1522

## Service Parts

### Wiring Diagram N0622, F0822, N0922, F1222, N1322 or F1522 Single Phase A or B Series

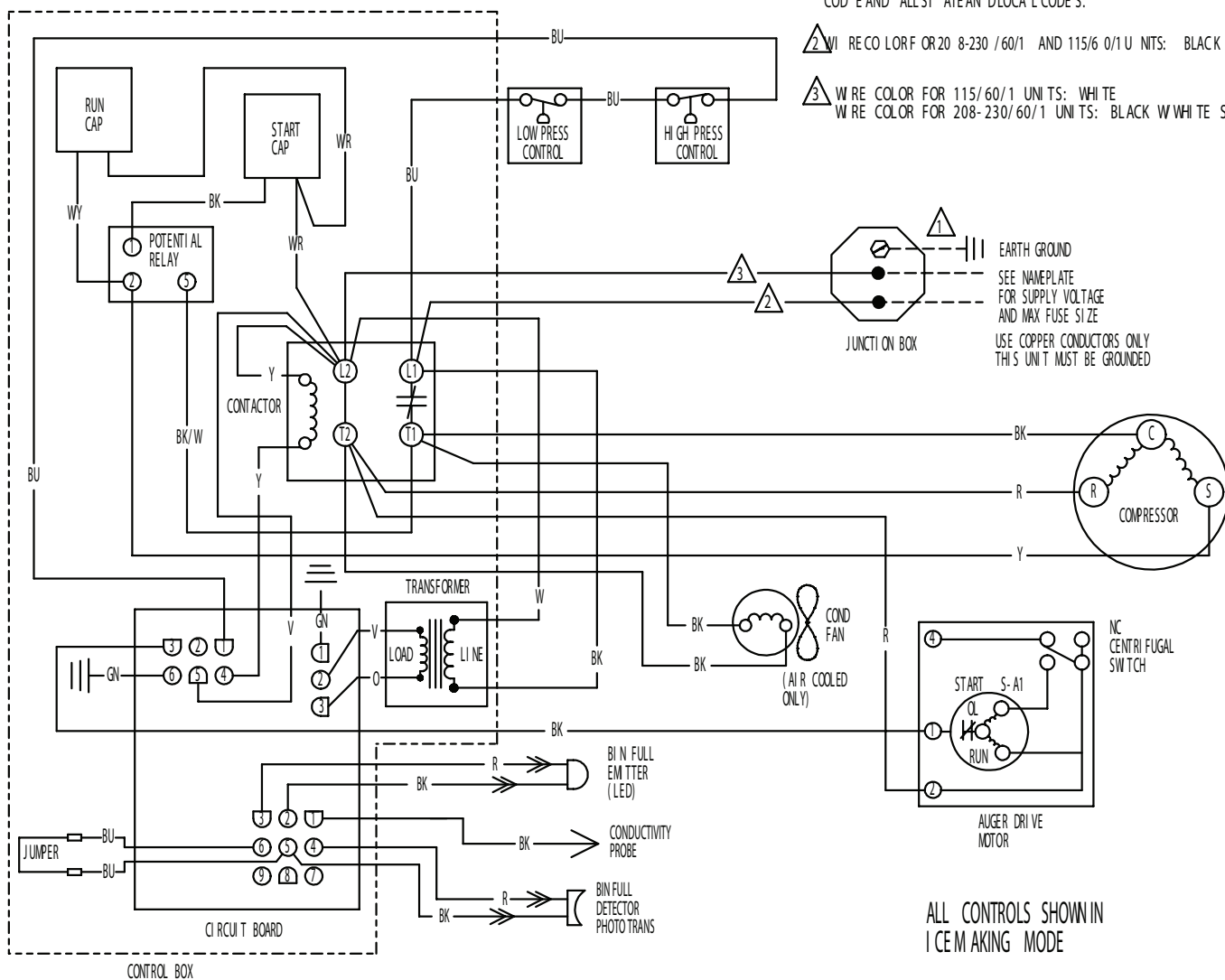
17-31 99-01

CAUTION:  
MORE THAN ONE DISCONNECT MEANS MAY BE  
REQUIRED TO DISCONNECT ALL POWER TO THIS UNIT.

1. WIRE COLORS INDICATE FIELD WIRING WHICH MUST BE  
INSTALLED IN ACCORDANCE WITH THE NATIONAL ELECTRICAL  
CODE AND ALL STATE AND LOCAL CODES.

2. WIRE COLOR FOR 208-230/60/1 AND 115/60/1 UNITS: BLACK

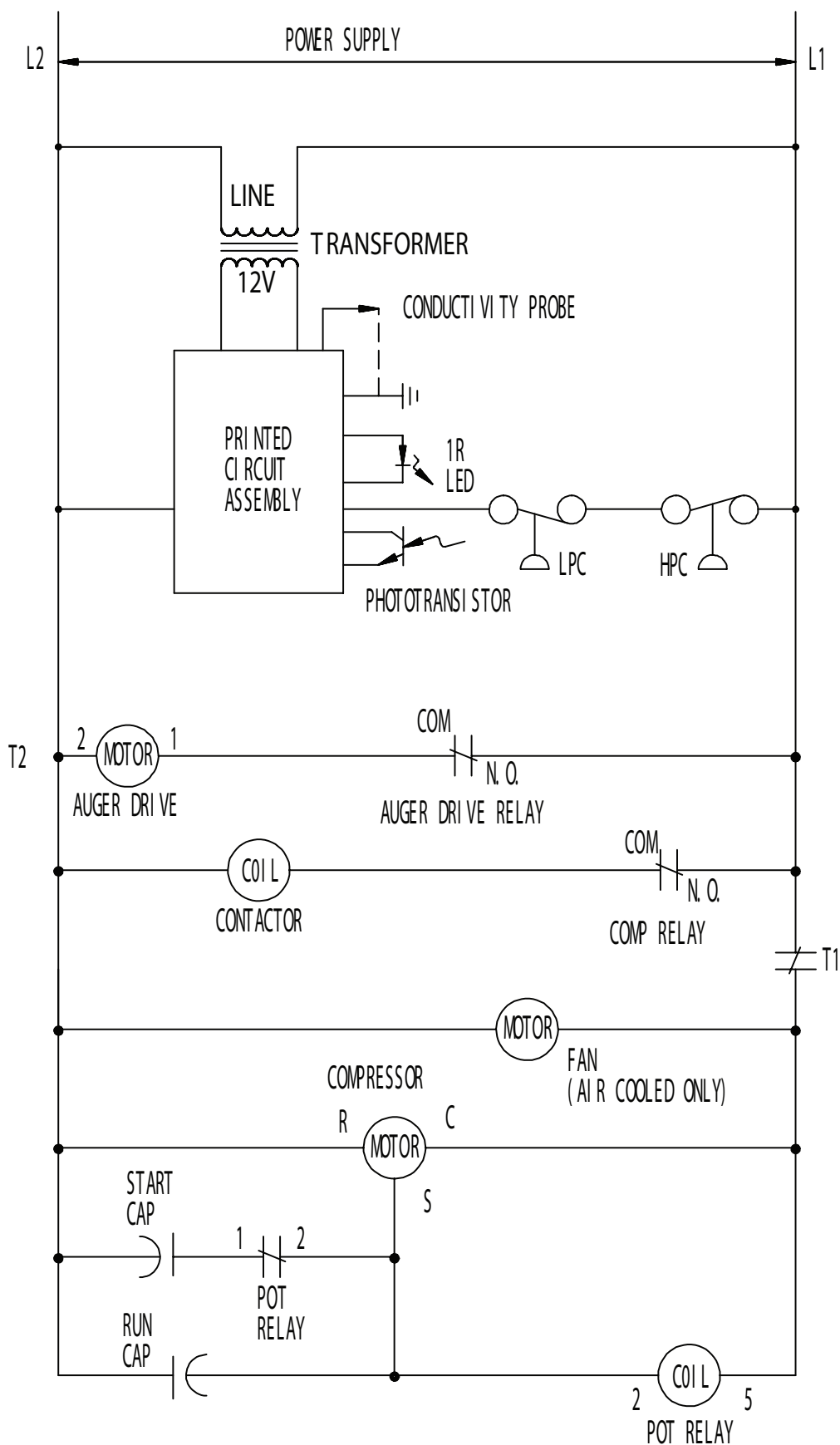
3. WIRE COLOR FOR 115/60/1 UNITS: WHITE  
WIRE COLOR FOR 208-230/60/1 UNITS: BLACK WITH WHITE STRIPE



# N0422, F0522, N0622, F0822, N0922, F1222, N1322, F1522

## Service Parts

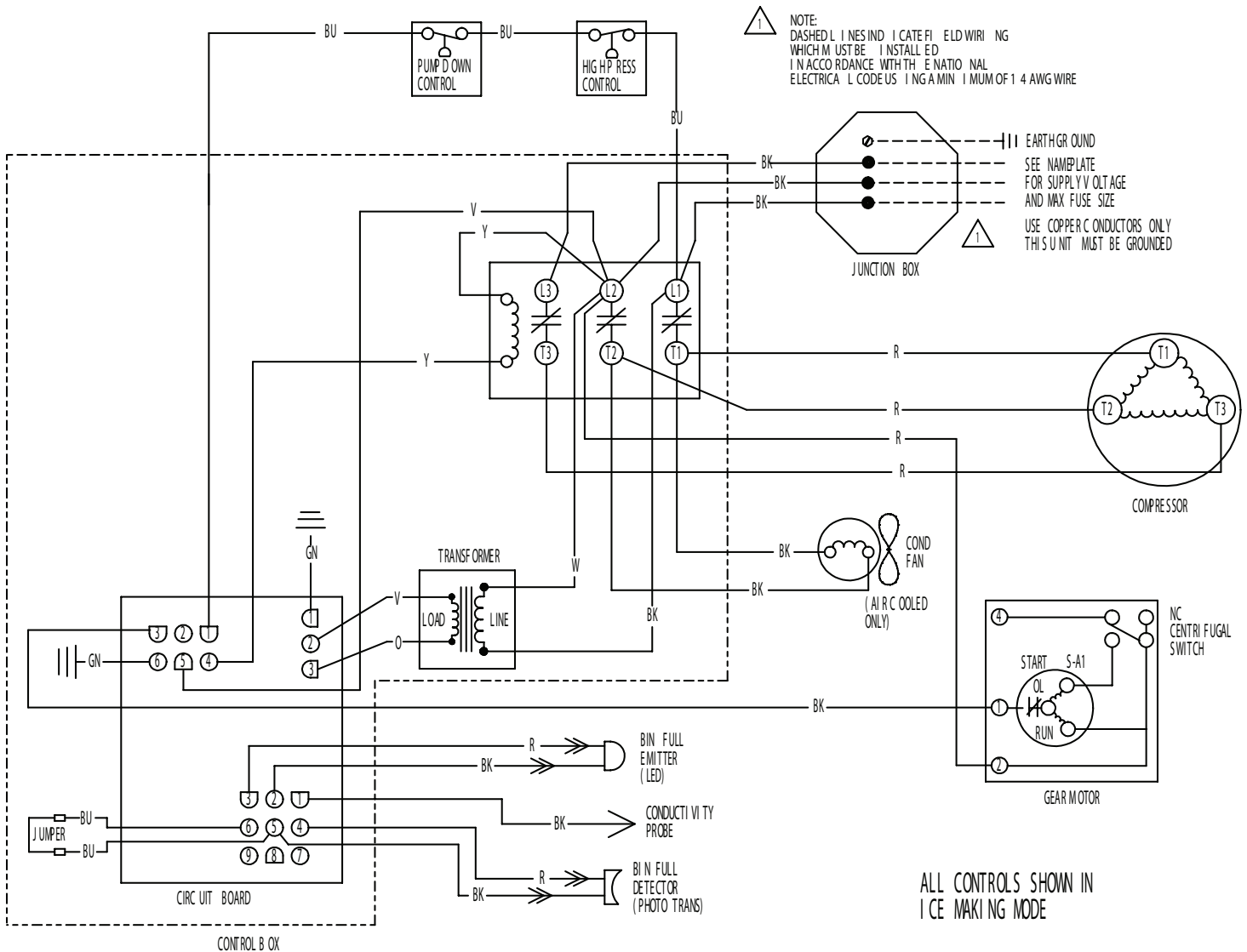
Schematic Diagram N0622, F0822, N0922, F1222, N1322 or F1522 Single Phase A or B Series



# N0422, F0522, N0622, F0822, N0922, F1222, N1322, F1522

## Service Parts

### Wiring Diagram N0922, F1222, N1322 or F1522 Three Phase A or B Series

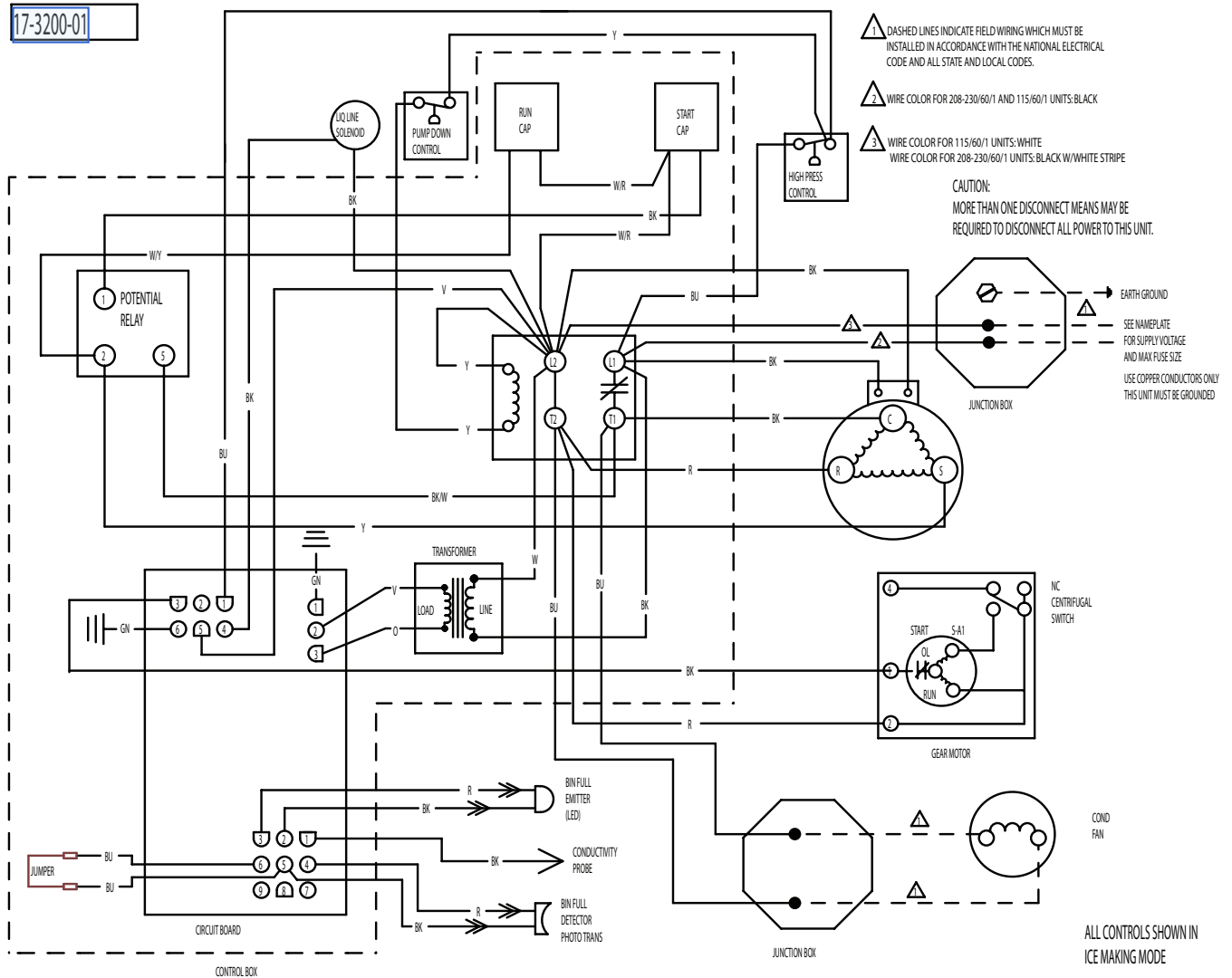




# N0422, F0522, N0622, F0822, N0922, F1222, N1322, F1522

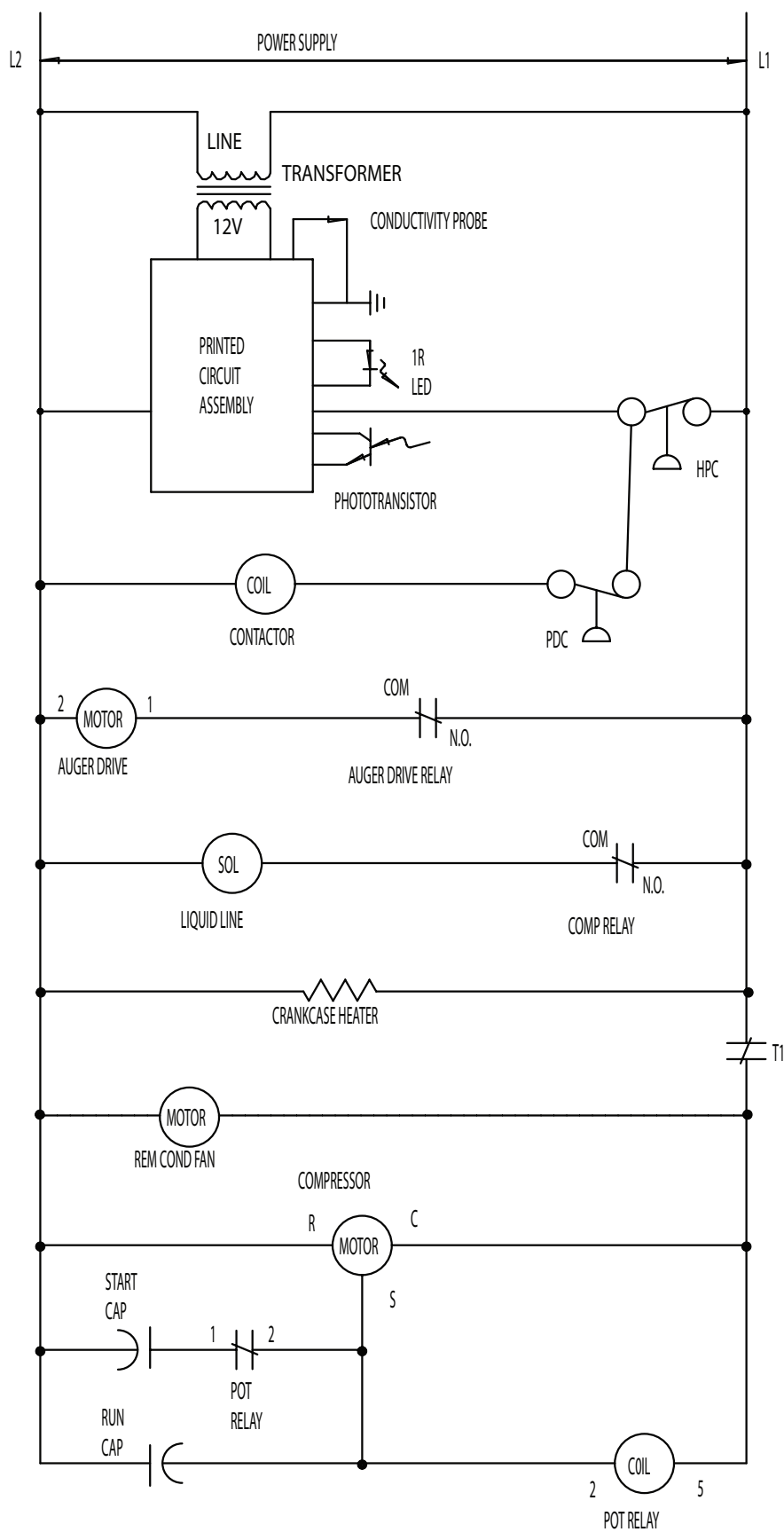
## Service Parts

### Wiring Diagram N0622, F0822, N0922, F1222, N1322, F1522 Remote Single Phase A or B Series



## Service Parts

### Schematic N0622, F0822, N0922, F1222, N1322, F1522 Remote Single Phase A or B Series



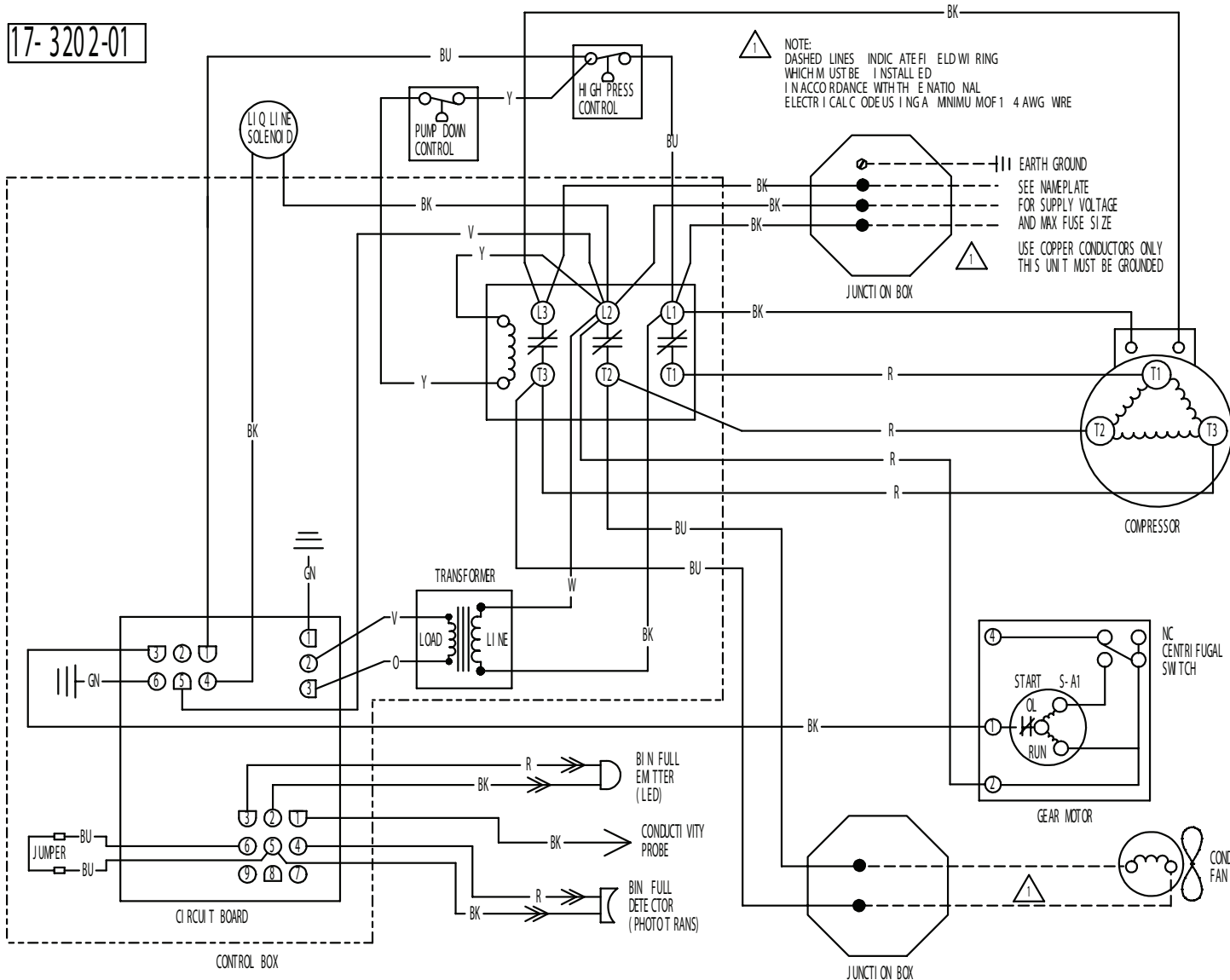


# N0422, F0522, N0622, F0822, N0922, F1222, N1322, F1522

## Service Parts

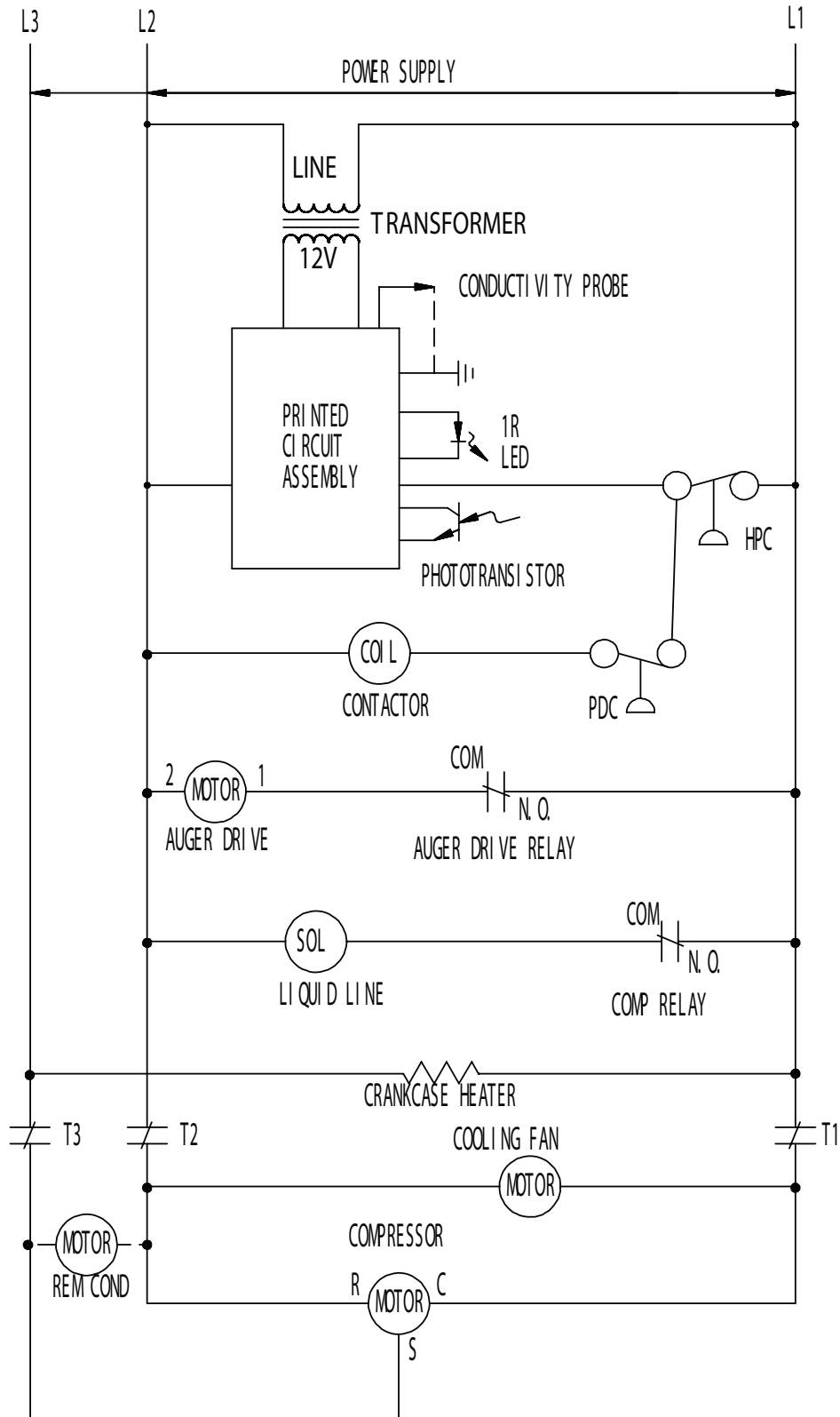
### Wiring Diagram N0922, F1222, N1322 or F1522 Remote Three Phase A or B Series

17-3202-01



## Service Parts

### Schematic Diagram N0922, F1222, N1322 or F1522 Remote Three Phase A or B Series

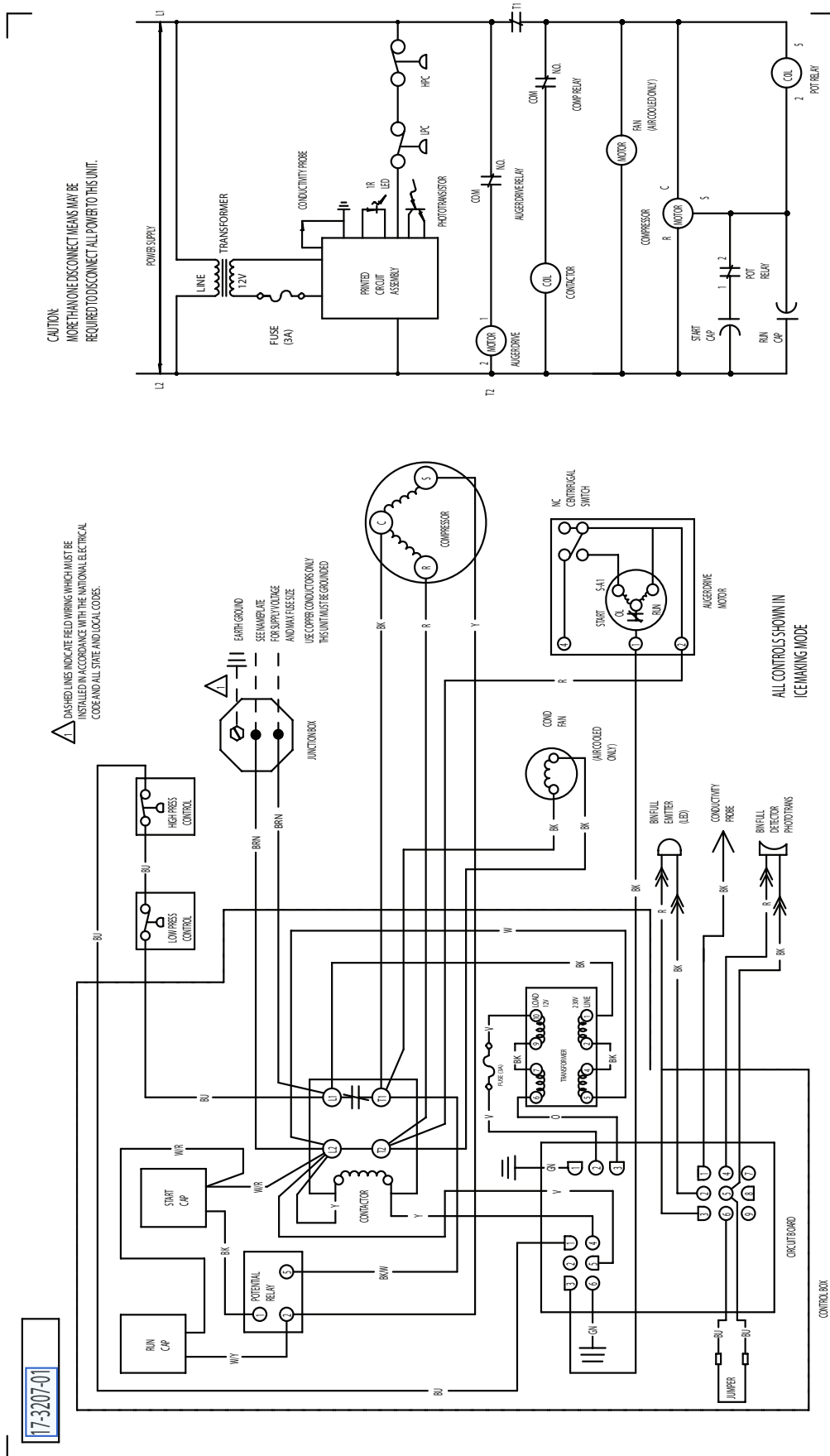


ALL CONTROLS SHOWN IN  
ICE MAKING MODE

# N0422, F0522, N0622, F0822, N0922, F1222, N1322, F1522

## Service Parts

### N0622, F0822, N0922 or F1222 50 Hz Wiring Diagram A or B Series



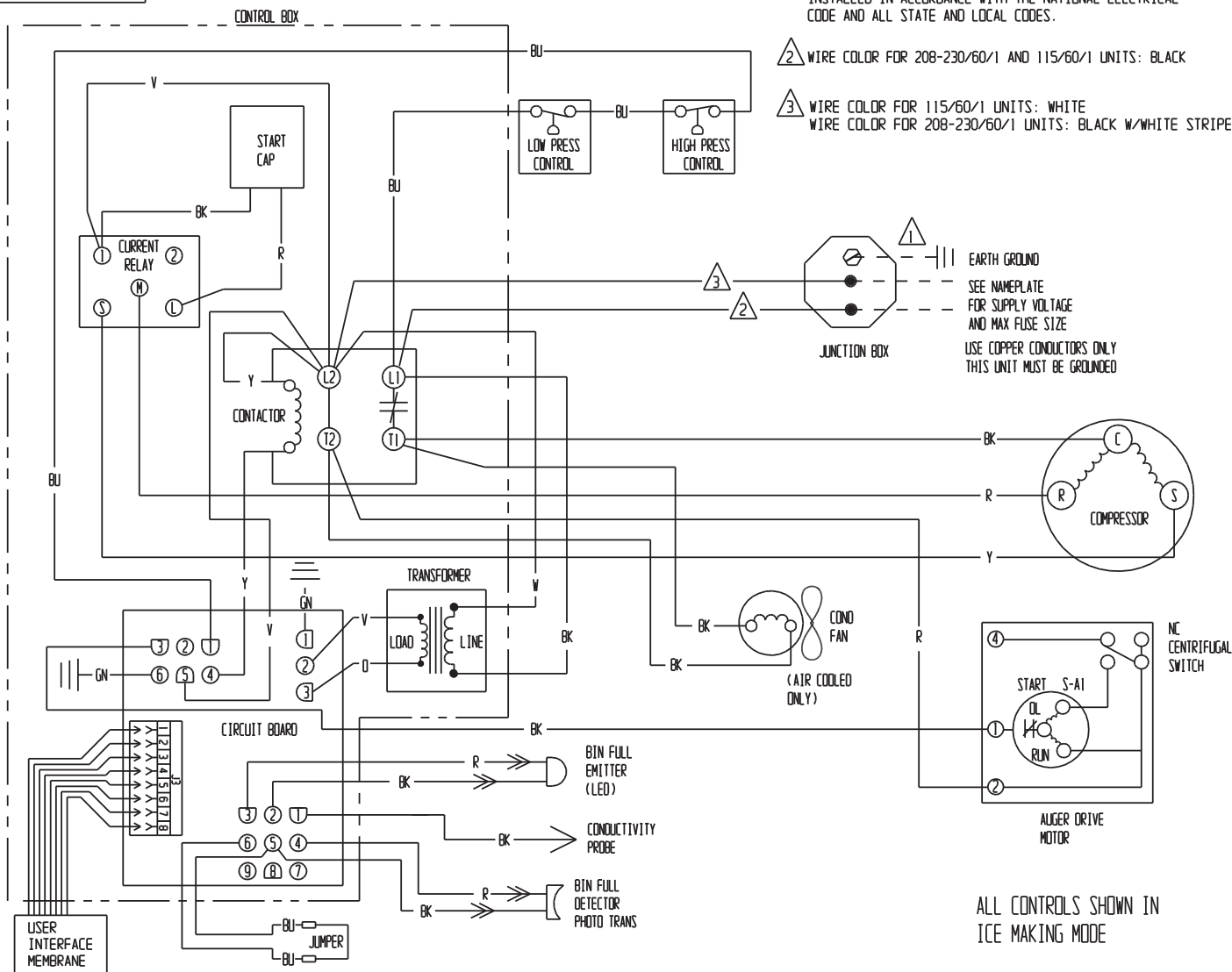
# N0422, F0522, N0622, F0822, N0922, F1222, N1322, F1522

## Service Parts

### Wiring Diagram N0422 and F0522 D Series

17-3541-01

- 1 DASHED LINES INDICATE FIELD WIRING WHICH MUST BE INSTALLED IN ACCORDANCE WITH THE NATIONAL ELECTRICAL CODE AND ALL STATE AND LOCAL CODES.
- 2 WIRE COLOR FOR 208-230/60/1 AND 115/60/1 UNITS: BLACK
- 3 WIRE COLOR FOR 115/60/1 UNITS: WHITE  
WIRE COLOR FOR 208-230/60/1 UNITS: BLACK W/WHITE STRIPE



### Schematic Diagram N0422 or F0522 D Series

MORE THAN ONE DISCONNECT MEANS MAY BE  
REQUIRED TO DISCONNECT ALL POWER TO THIS UNIT.



## Wiring Diagram N0622, F0822, N0922, F1222, N1322 or F1522 Single Phase D Series

CAUTION:  
MORE THAN ONE DISCONNECT MEANS MAY BE  
REQUIRED TO DISCONNECT ALL POWER TO THIS UNIT.

3 WIRE COLOR FOR 115/60/1 UNITS: WHITE  
WIRE COLOR FOR 208-230/60/1 UNITS: BLACK W/WHITE STRIPE





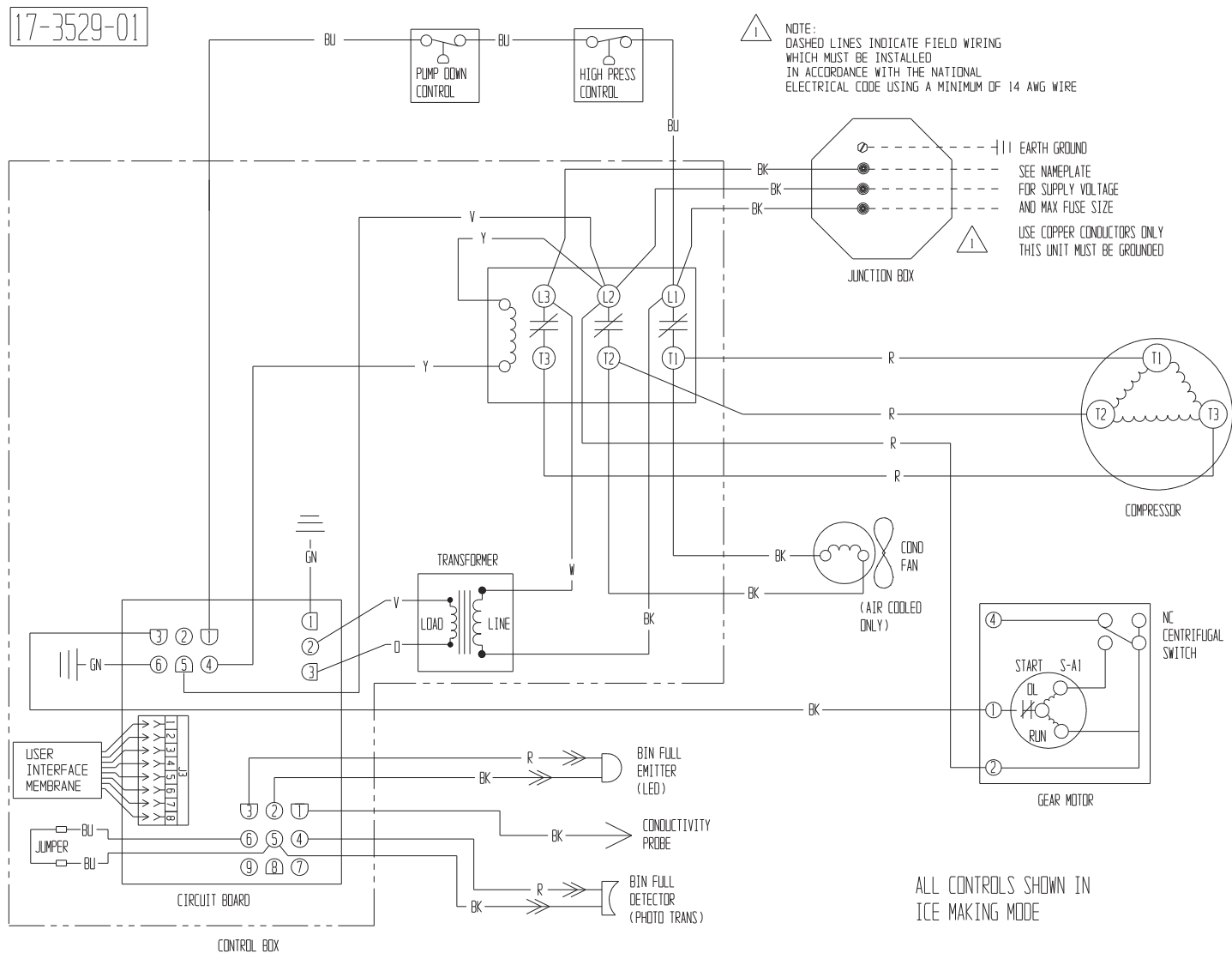
### Schematic Diagram N0622, F0822, N0922, F1222, N1322 or F1522 Single Phase D Series



# N0422, F0522, N0622, F0822, N0922, F1222, N1322, F1522

## Service Parts

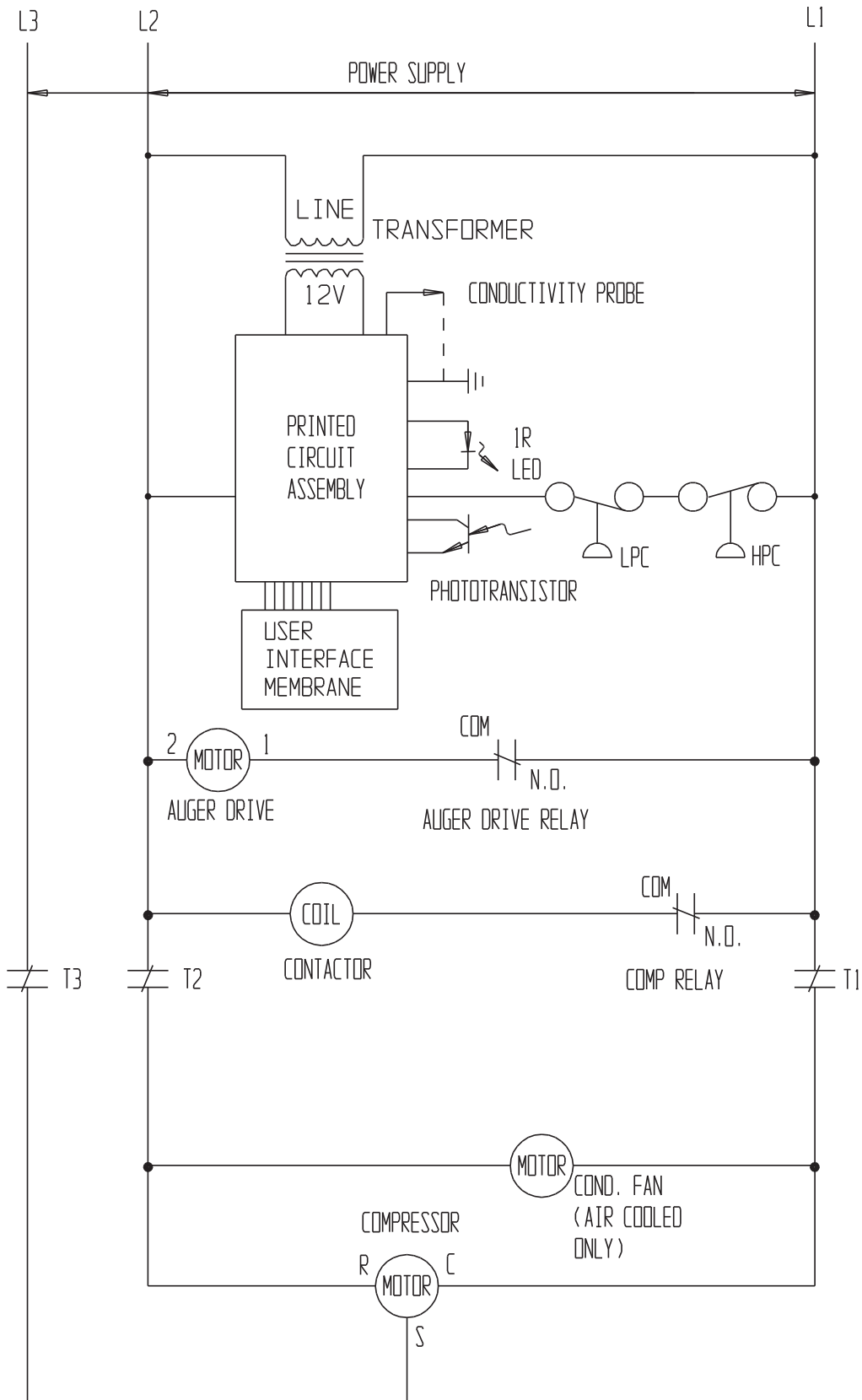
### Wiring Diagram F1222, N1322 Three Phase D Series



# N0422, F0522, N0622, F0822, N0922, F1222, N1322, F1522

## Service Parts

### Schematic Diagram F1222, N1322 Three Phase D Series

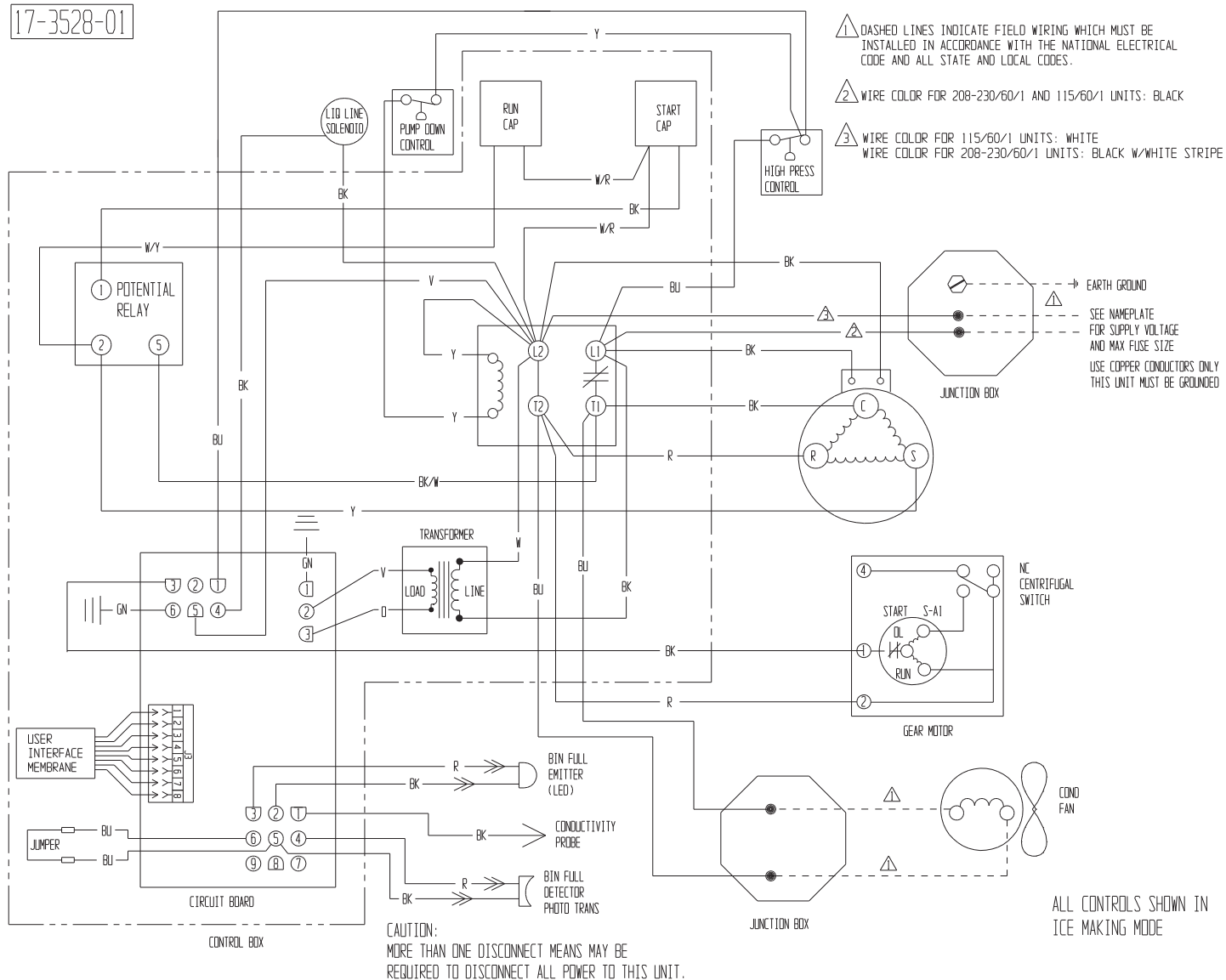


# N0422, F0522, N0622, F0822, N0922, F1222, N1322, F1522

## Service Parts

### Wiring Diagram N0622, F0822, N0922, F1222, N1322 Remote Single Phase D Series

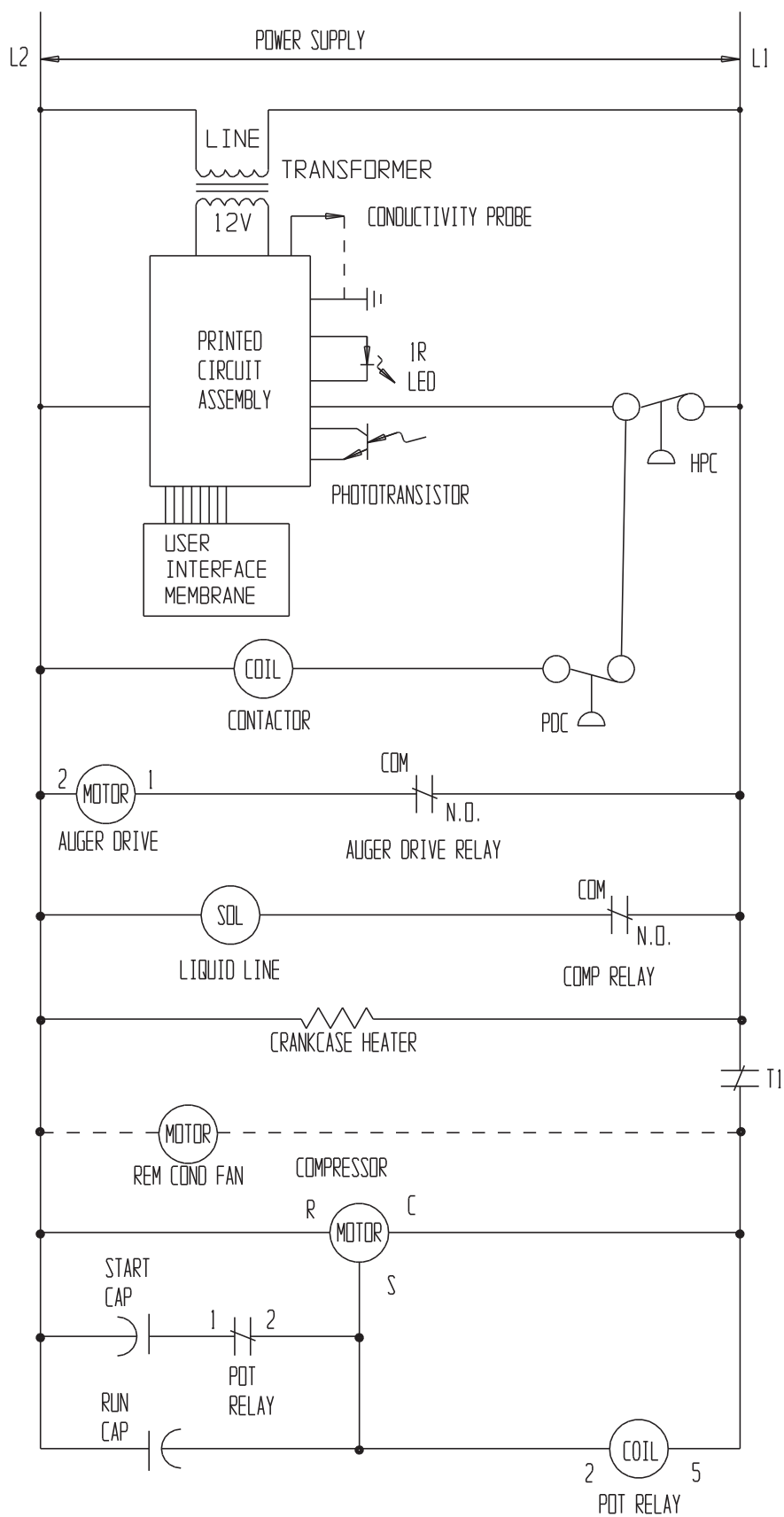
17-3528-01



# N0422, F0522, N0622, F0822, N0922, F1222, N1322, F1522

## Service Parts

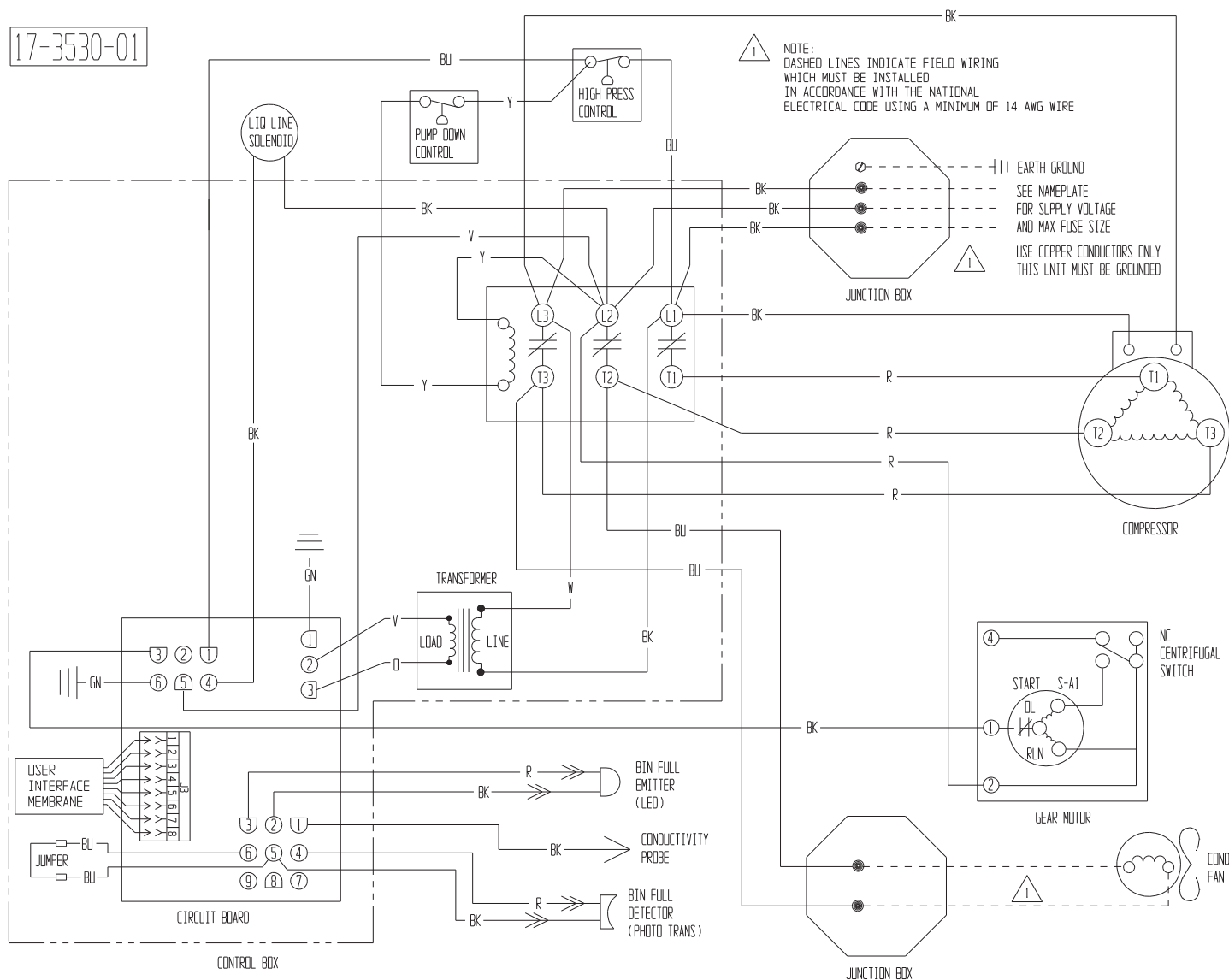
### Schematic Diagram N0622, F0822, N0922, F1222, N1322 Remote Single Phase D Series



# N0422, F0522, N0622, F0822, N0922, F1222, N1322, F1522

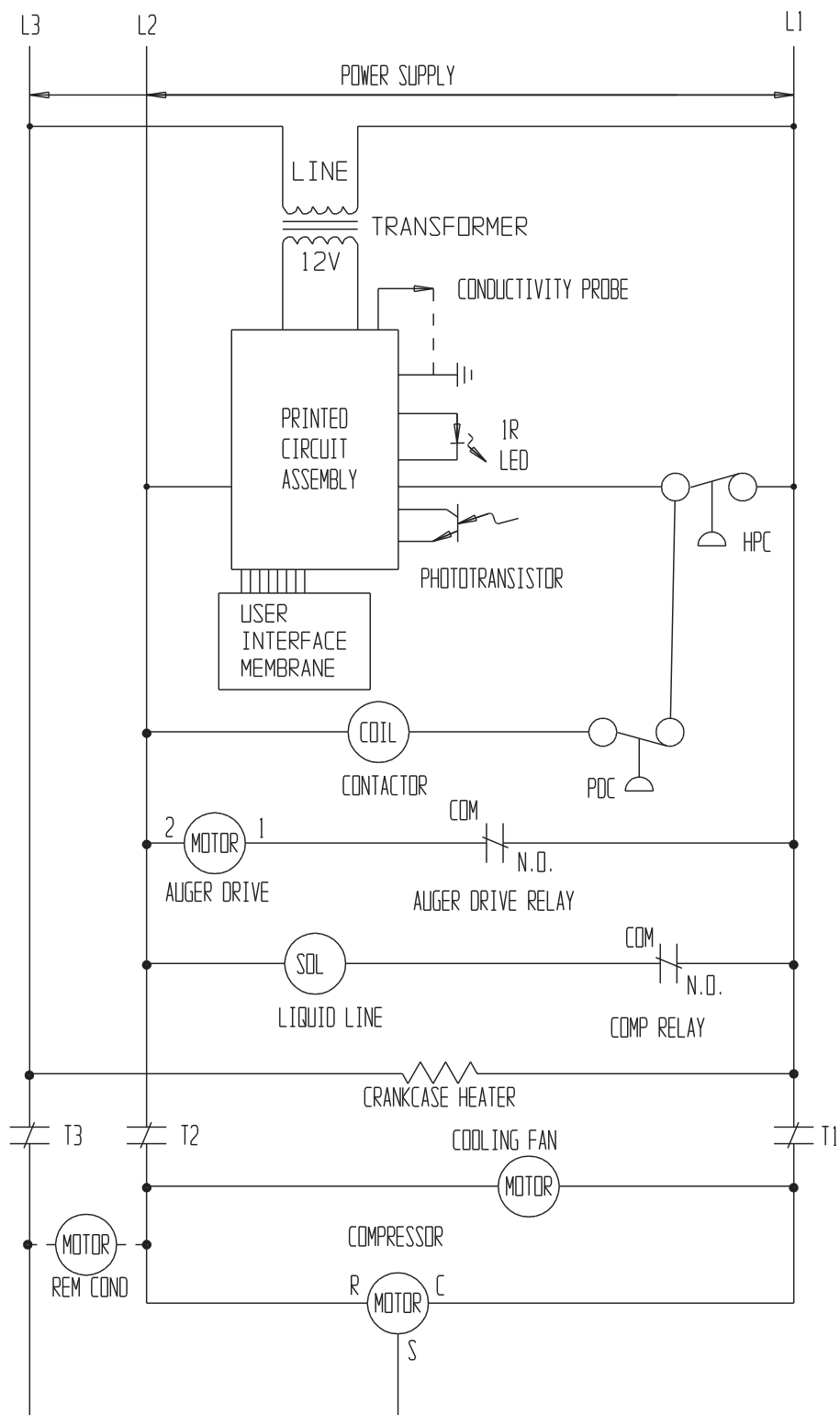
## Service Parts

### Wiring Diagram F1222 Remote Three Phase D Series



## Service Parts

### Schematic Diagram F1222 Remote Three Phase D Series



ALL CONTROLS SHOWN IN  
ICE MAKING MODE

## N0622, N0922 or F1222 50 Hz Wiring Diagram D Series

