

# NDE754 SERVICE PARTS

This parts list contains the service parts and wiring diagrams for this model. Check the model number of the machine needing parts to be sure that this is the correct parts list.

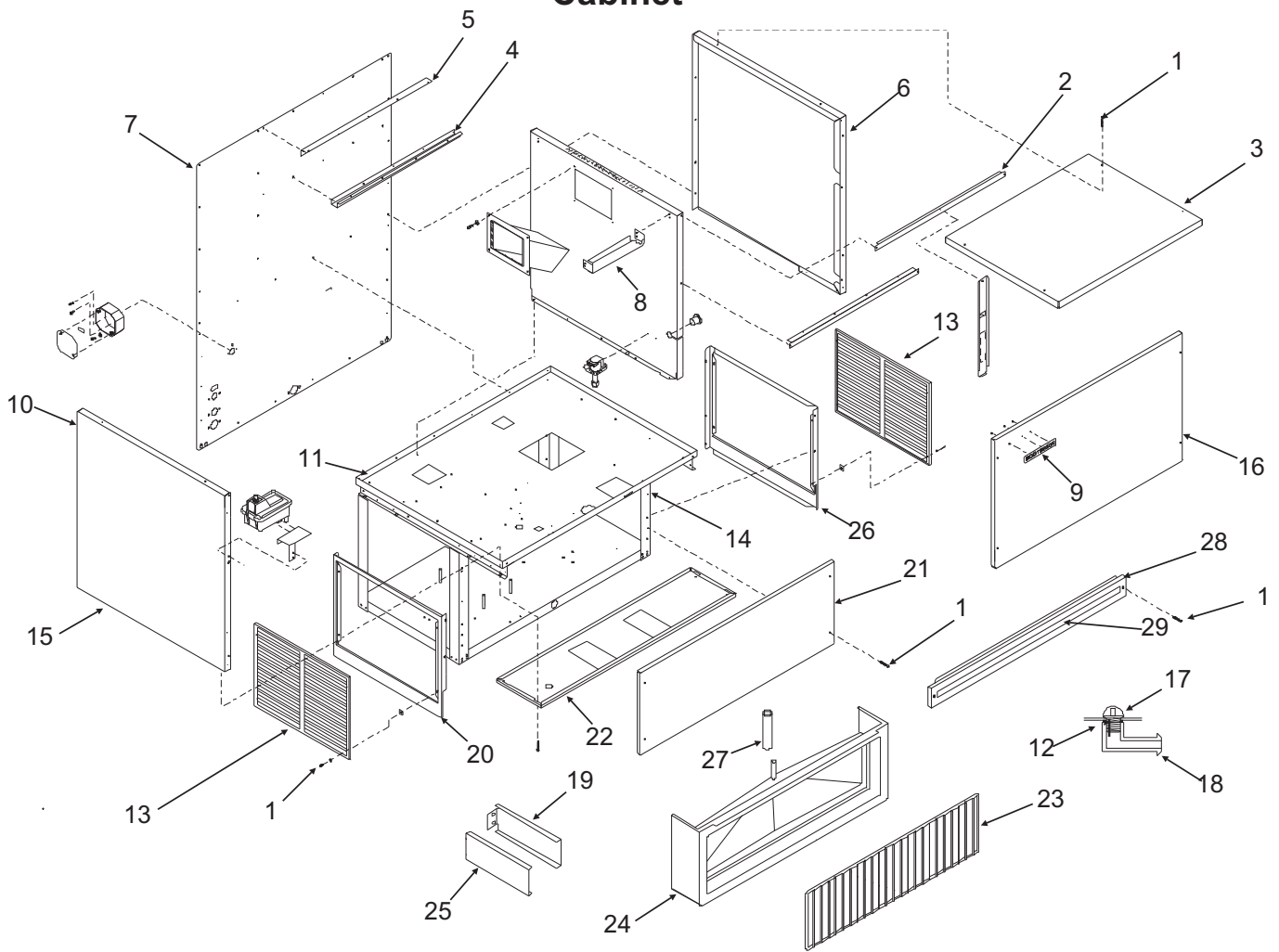
**Note: The liquid line filter drier listed in this parts list is designed for this refrigeration system. Premature failure may result if the wrong drier is used.**

## Table Of Contents

|                                      |         |
|--------------------------------------|---------|
| Cabinet . . . . .                    | page 2  |
| Hopper . . . . .                     | page 3  |
| Vend Assembly . . . . .              | page 4  |
| Ice Chute and Dispensing . . . . .   | page 5  |
| Air Cooled Refrigeration . . . . .   | page 6  |
| Water Cooled Refrigeration . . . . . | page 7  |
| Water System . . . . .               | page 8  |
| Evaporator . . . . .                 | page 9  |
| Gearmotor . . . . .                  | page 10 |
| Control Box . . . . .                | page 11 |
| Wiring Diagram . . . . .             | page 12 |
| Schematic Diagram . . . . .          | page 13 |

# NDE754 SERVICE PARTS

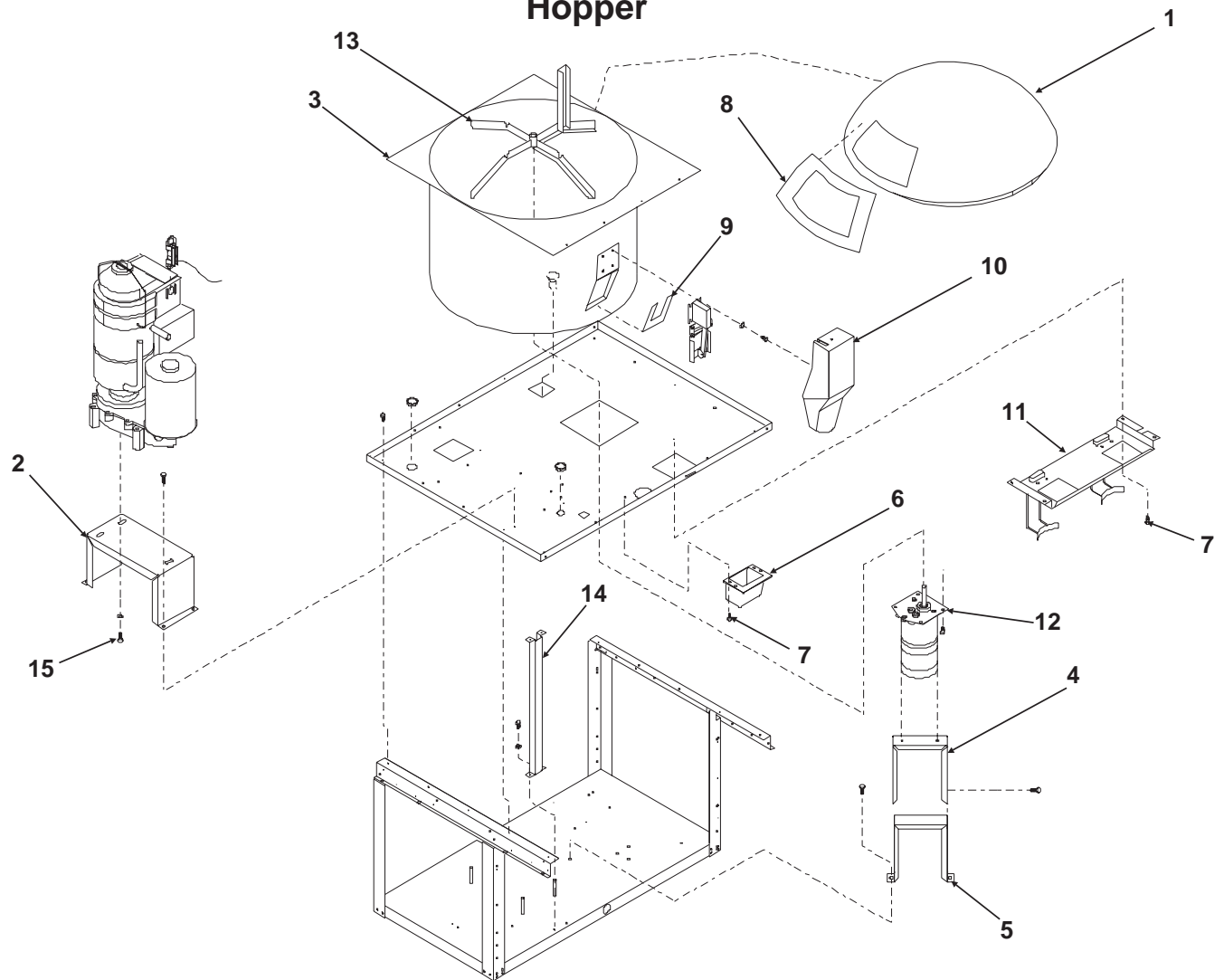
## Cabinet



| ITEM<br>NUMBER | PART<br>NUMBER             | DESCRIPTION              |    |                            |  |
|----------------|----------------------------|--------------------------|----|----------------------------|--|
| 1              | <a href="#">03-1419-22</a> | S.S. Screw               | 16 | A34441-001                 | Upper front panel, s s                   |
| 2              | A34563-001                 | Upper Brace              |    | A34561-001                 | Front pnl, ss, gov't mod                 |
| 3              | A33282-002                 | Top panel, stainless     | 17 | <a href="#">02-2809-01</a> | Drain top                                |
| 4              | A34625-015                 | Bin support              | 18 | <a href="#">02-1742-00</a> | Drain btm                                |
| 5              | A33270-015                 | Bin support brace        | 19 | A34401-016                 | Right sink support                       |
| 6              | A34414-002                 | Rt. side upper panel     |    | <a href="#">03-1645-01</a> | Screw $\frac{1}{4}$ 20 x $\frac{1}{2}$ " |
| 7              | A33276-002                 | Back panel, stainless    | 20 | A33284-002                 | Lower left side panel                    |
| 8              | A33269-015                 | Upper brace              | 21 | A34477-001                 | Splash panel                             |
| 9              | <a href="#">15-0808-01</a> | Emblem                   | 22 | A34443-002                 | Ice chute panel, s. s.                   |
| 10             | <a href="#">03-1531-01</a> | Screw                    | 23 | <a href="#">02-2582-01</a> | Grill                                    |
| 11             | A33285-015                 | Upper Plate              | 24 | A31047-032                 | Sink, gray                               |
| 12             | <a href="#">13-0617-11</a> | O-ring                   | 25 | A34401-015                 | Sink support left                        |
| 13             | A33281-002                 | Service Panel, stainless |    | <a href="#">03-1645-01</a> | Screw $\frac{1}{4}$ 20 x $\frac{1}{2}$ " |
| 14             | A33280-001                 | Lower frame assy         | 26 | A33284-004                 | Rt. side lower panel                     |
| 15             | A33283-002                 | Left side panel, upper   | 27 | A20250-003                 | Tube                                     |
|                |                            |                          | 28 | A34573-001                 | Spout cover s s                          |
|                |                            |                          | 29 | <a href="#">15-0747-01</a> | Decal                                    |

# NDE754 SERVICE PARTS

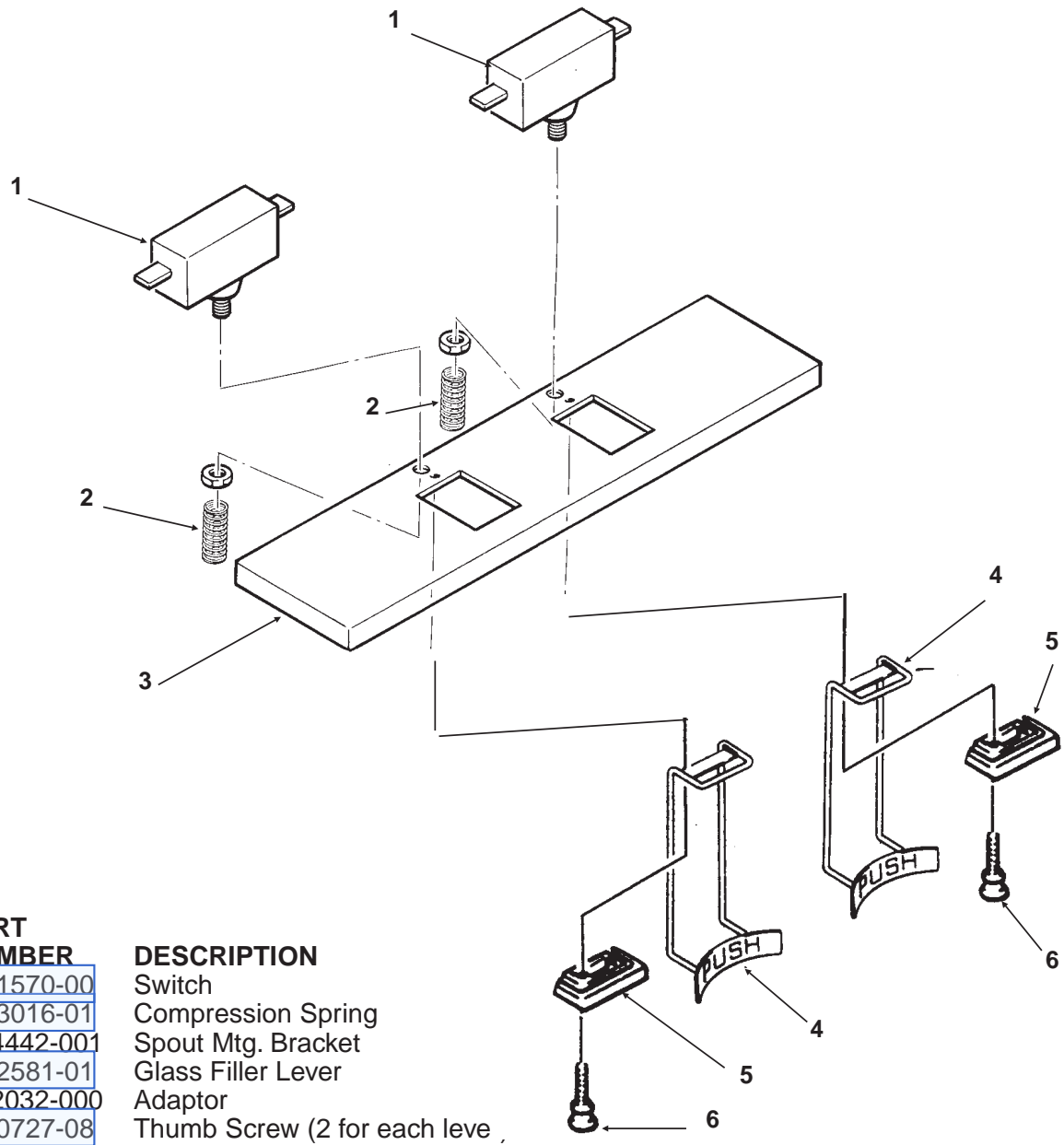
## Hopper



| ITEM<br>NUMBER | PART<br>NUMBER             | DESCRIPTION                    |
|----------------|----------------------------|--------------------------------|
| 1              | A34957-001                 | Ice bin cover                  |
| 2              | A33287-015                 | Evap. support bracket          |
| 3              | A34016-001                 | Ice Storage Bin                |
| 4              | A34508-001                 | Agit mtr support, upper        |
| 5              | A34509-001                 | Agit mtr support, lower        |
| 6              | A34578-002                 | Water Chute                    |
| 7              | <a href="#">03-1531-01</a> | Screw                          |
| 8              | <a href="#">13-0875-01</a> | Grommet                        |
| 9              | <a href="#">02-3233-01</a> | Door gasket                    |
| 10             | A35321-001                 | Ice chute                      |
| 11             | see next page              |                                |
| 12             | <a href="#">12-2368-01</a> | Dispense motor assembly        |
|                | <a href="#">A32672-001</a> | Heater for dispense gear motor |
| 13             | <a href="#">02-3116-01</a> | Agitator                       |
| 14             | <a href="#">A33271-015</a> | Brace                          |
| 15             | <a href="#">03-1405-17</a> | Screw                          |

# NDE754 SERVICE PARTS

## Vend Assembly



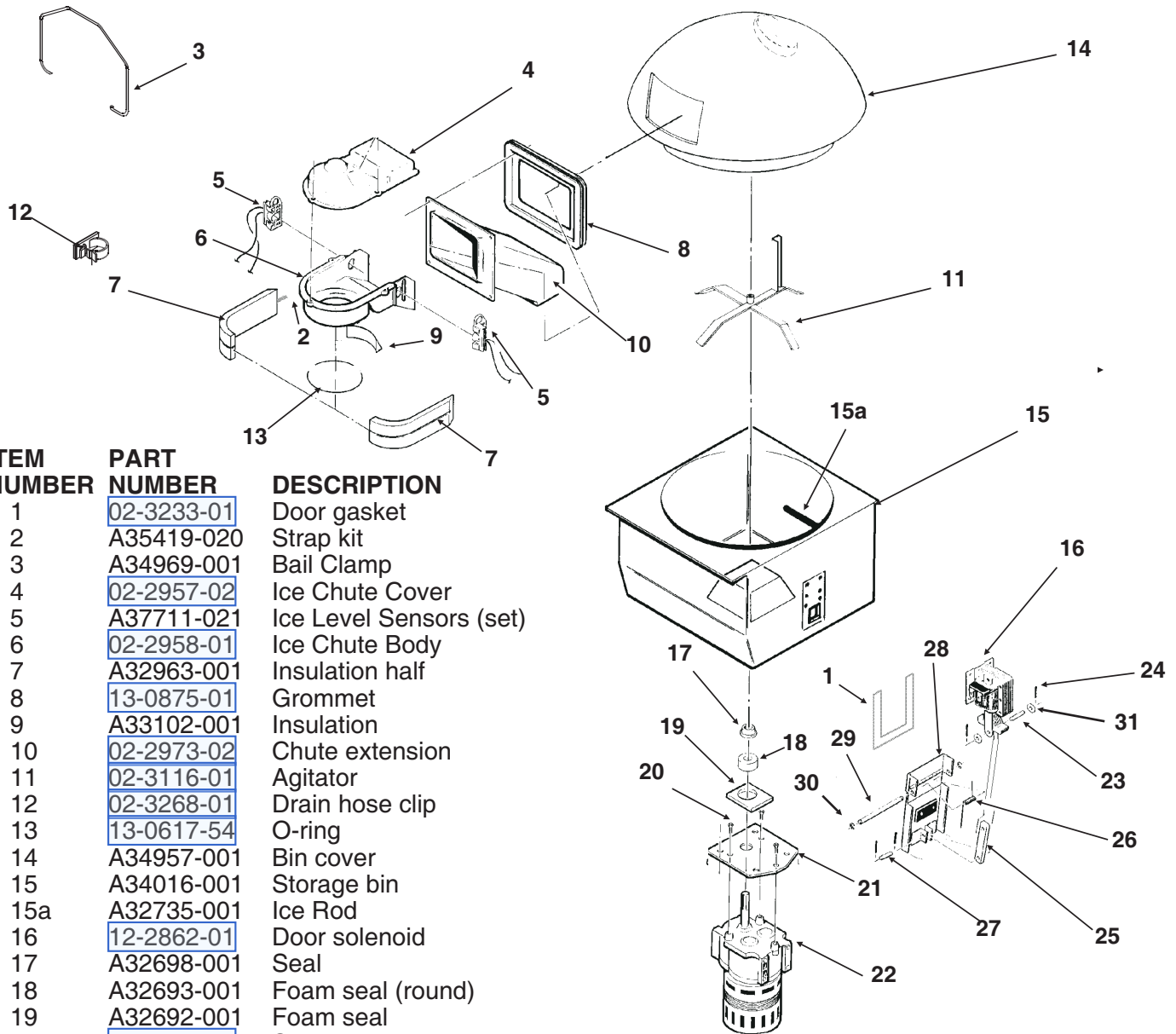
| ITEM<br>NUMBER | PART<br>NUMBER | DESCRIPTION                  |
|----------------|----------------|------------------------------|
| 1              | 12-1570-00     | Switch                       |
| 2              | 02-3016-01     | Compression Spring           |
| 3              | A34442-001     | Spout Mtg. Bracket           |
| 4              | 02-2581-01     | Glass Filler Lever           |
| 5              | A22032-000     | Adaptor                      |
| 6              | 03-0727-08     | Thumb Screw (2 for each leve |

### KPC750 Portion Control Kit Service Parts - Not Illustrated

| ITEM<br>NUMBER | PART<br>NUMBER | DESCRIPTION      |
|----------------|----------------|------------------|
| 1              | 12-2360-01     | Time Delay Relay |
| 2              | A24258-002     | Potentiometer    |
| 3              | 02-1810-00     | Knob             |

# NDE754 SERVICE PARTS

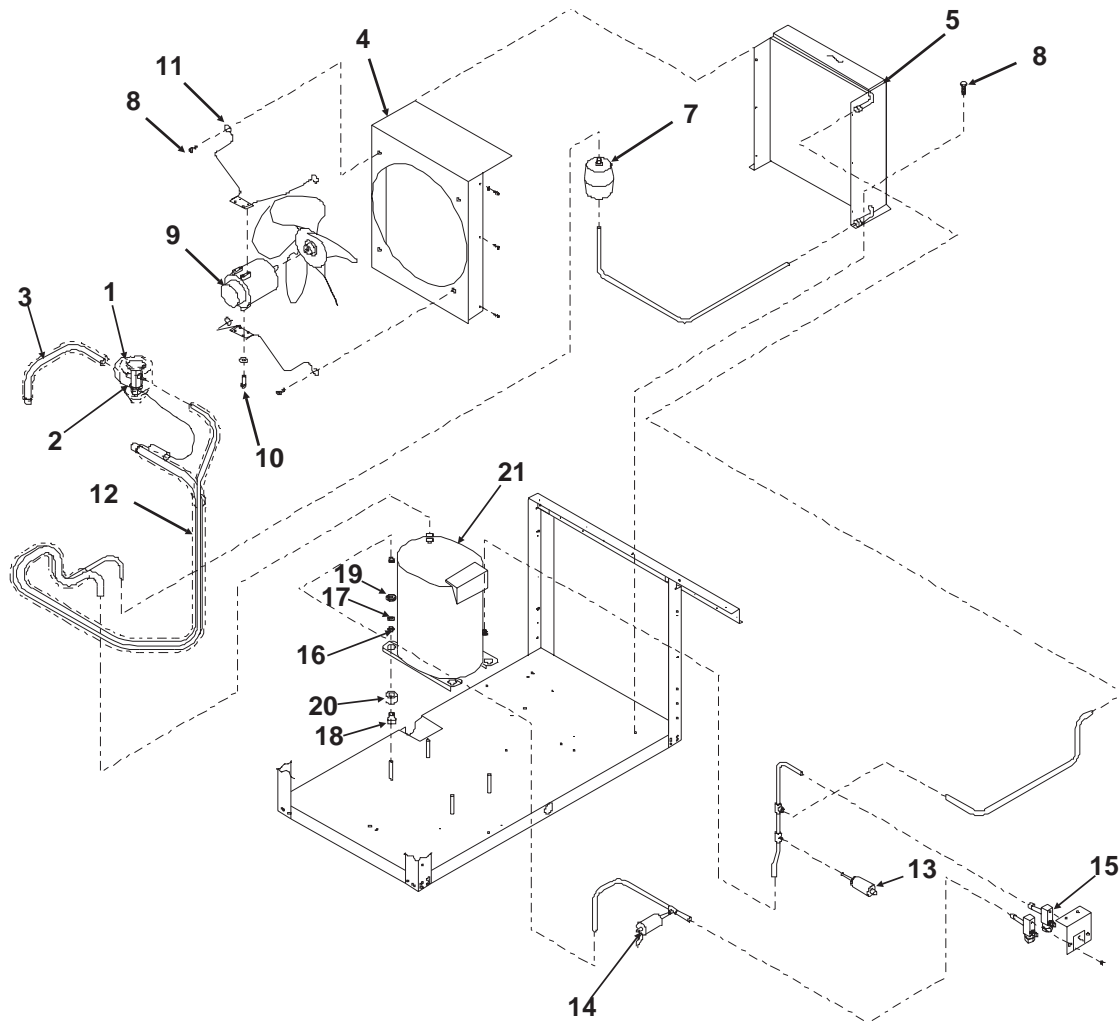
## Ice Chute and Dispensing



| ITEM<br>NUMBER | PART<br>NUMBER | DESCRIPTION             |
|----------------|----------------|-------------------------|
| 1              | 02-3233-01     | Door gasket             |
| 2              | A35419-020     | Strap kit               |
| 3              | A34969-001     | Bail Clamp              |
| 4              | 02-2957-02     | Ice Chute Cover         |
| 5              | A37711-021     | Ice Level Sensors (set) |
| 6              | 02-2958-01     | Ice Chute Body          |
| 7              | A32963-001     | Insulation half         |
| 8              | 13-0875-01     | Grommet                 |
| 9              | A33102-001     | Insulation              |
| 10             | 02-2973-02     | Chute extension         |
| 11             | 02-3116-01     | Agitator                |
| 12             | 02-3268-01     | Drain hose clip         |
| 13             | 13-0617-54     | O-ring                  |
| 14             | A34957-001     | Bin cover               |
| 15             | A34016-001     | Storage bin             |
| 15a            | A32735-001     | Ice Rod                 |
| 16             | 12-2862-01     | Door solenoid           |
| 17             | A32698-001     | Seal                    |
| 18             | A32693-001     | Foam seal (round)       |
| 19             | A32692-001     | Foam seal               |
| 20             | 03-1418-15     | Screw                   |
| 21             | A34017-001     | Plate                   |
| 22             | 12-2368-01     | Gearmotor Assy          |
|                | A32672-001     | Heater for gearmotor    |
| 23             | A32685-001     | Linkage pins, med.      |
| 24             | 03-0396-01     | Cotter pin              |
| 25             | 02-3206-01     | Solenoid linkage        |
| 26             | A32690-001     | Door spring             |
| 27             | A32687-001     | Linkage pins, small     |
| 28             | A32787-001     | Door                    |
| 29             | A32684-001     | Long Axle               |
| 30             | 03-1539-09     | "C" Clip                |
| 31             | 03-1407-02     | Washer                  |

# NDE754 SERVICE PARTS

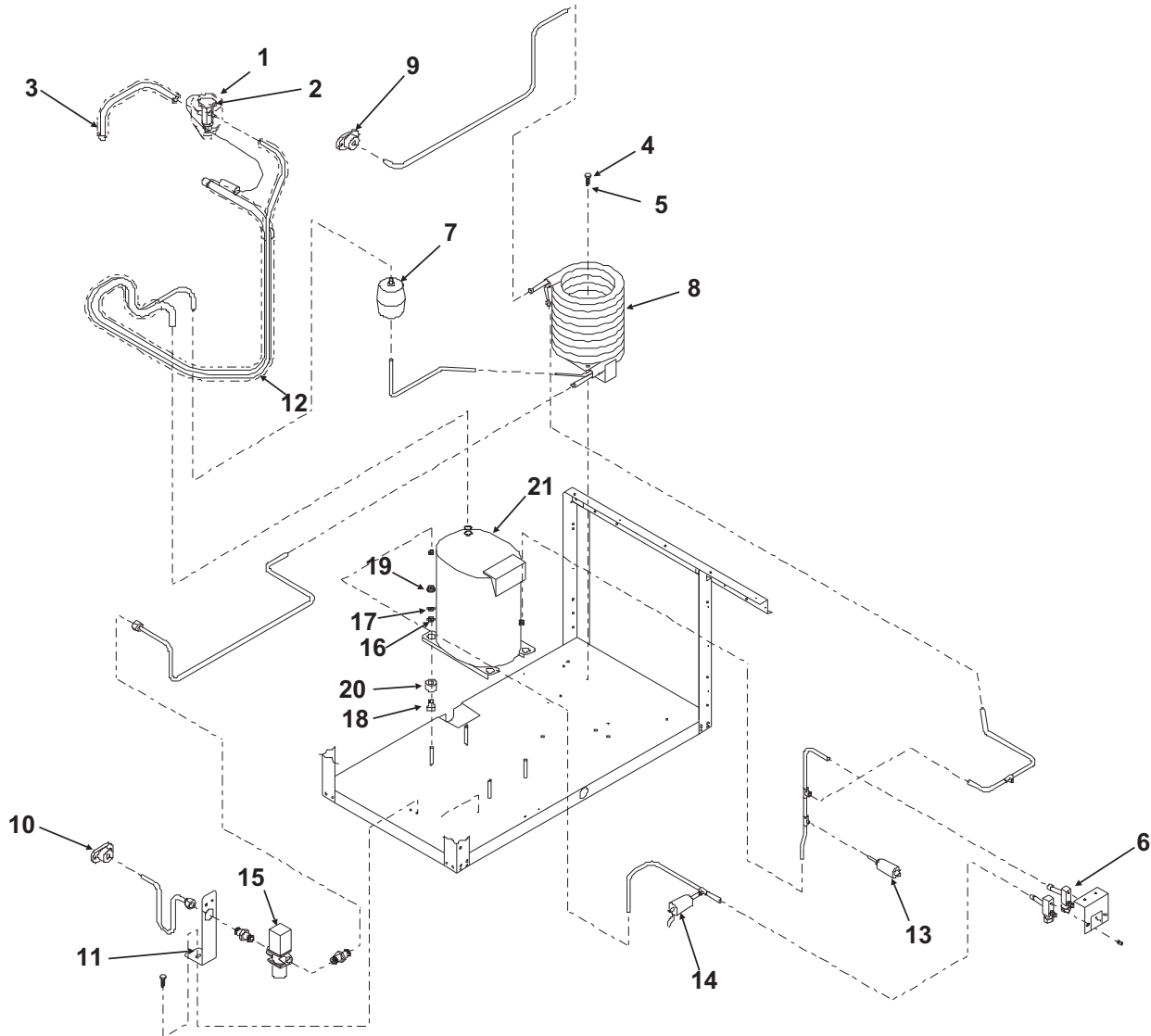
## Air Cooled Refrigeration



| ITEM<br>NUMBER | PART<br>NUMBER | DESCRIPTION             | ITEM<br>NUMBER | PART<br>NUMBER | DESCRIPTION             |
|----------------|----------------|-------------------------|----------------|----------------|-------------------------|
| 1              | A32961-020     | Insulation kit, 3 piece | 12             | A35949-001     | Suction line            |
| 2              | 11-0488-21     | Thermo expansion valve  | 13             | 11-0501-22     | Hi press. cut out       |
| 3              | ref only       | Evaporator inlet        | 14             | 11-0502-21     | Low press. cut out      |
| 4              | A35911-001     | Fan shroud              | 15             | 16-0832-20     | Access Valve            |
| 5              | 18-8732-01     | Condenser               |                | 16-0832-02     | Stem cap                |
| 6              | 18-3732-01     | Fan blade               |                | 16-0832-03     | Core cap                |
| 7              | 02-3319-02     | Dryer                   | 16             | 03-1407-07     | Washer                  |
| 8              | 03-1645-01     | Screw                   | 17             | 03-1410-04     | Lockwasher              |
| 9              | 18-5105-11     | Fan Motor               | 18             | 18-2200-28     | Grommet                 |
| 10             | 03-1531-08     | Screw                   | 19             | 03-1406-10     | Hex nut                 |
| 11             | 02-3333-01     | Fan motor bracket       | 20             | 18-2200-27     | Metal sleeve            |
|                |                |                         | 21             | 18-8721-21     | Compressor              |
|                |                |                         |                | 18-8711-50     | Overload for compressor |

# NDE754 SERVICE PARTS

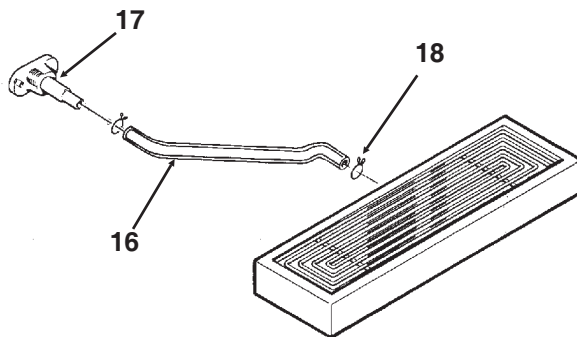
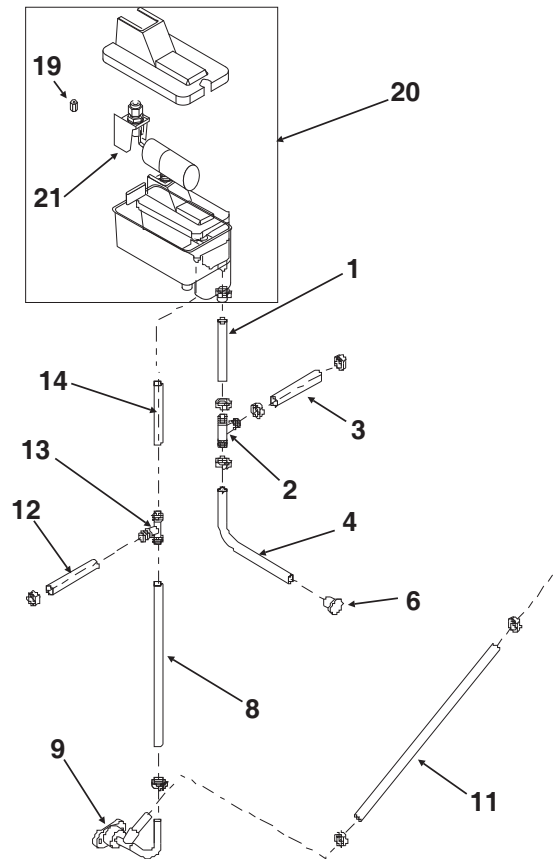
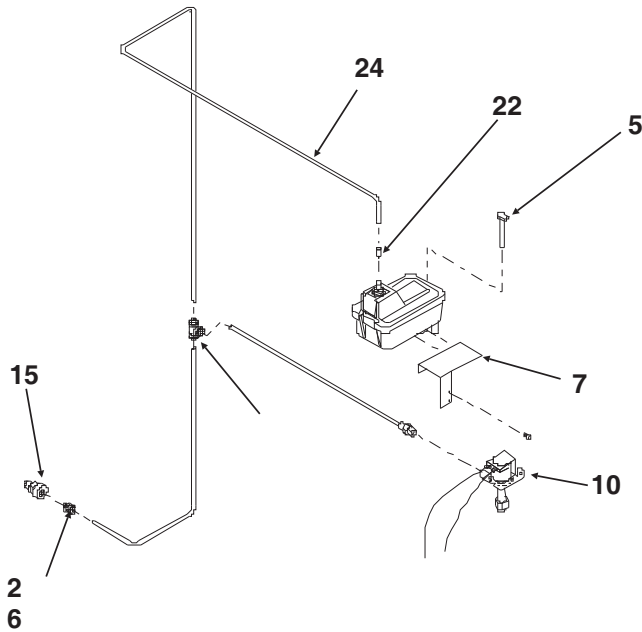
## Water Cooled Refrigeration



| ITEM<br>NUMBER | PART<br>NUMBER             | DESCRIPTION             | ITEM<br>NUMBER | PART<br>NUMBER             | DESCRIPTION             |
|----------------|----------------------------|-------------------------|----------------|----------------------------|-------------------------|
| 1              | A32961-020                 | Insulation kit, 3 piece | 12             | A35949-001                 | Suction line            |
| 2              | <a href="#">11-0488-21</a> | Thermo expansion valve  | 13             | <a href="#">11-0501-22</a> | Hi press. cut out       |
| 3              | no number                  | Evap inlet tube         | 14             | <a href="#">11-0502-21</a> | Low press. cut out      |
| 4              | <a href="#">03-1645-01</a> | Screw                   | 15             | <a href="#">11-0608-21</a> | Water reg. valve        |
| 5              | <a href="#">03-1407-05</a> | Washer                  | 16             | <a href="#">03-1407-07</a> | Washer                  |
| 6              | <a href="#">16-0832-20</a> | Access Valve            | 17             | <a href="#">03-1410-04</a> | Lockwasher              |
|                | <a href="#">16-0832-02</a> | Stem cap                | 18             | <a href="#">18-2200-28</a> | Grommet                 |
|                | <a href="#">16-0832-03</a> | Core cap                | 19             | <a href="#">03-1406-10</a> | Hex nut                 |
| 7              | <a href="#">02-3319-02</a> | Dryer                   | 20             | <a href="#">18-2200-27</a> | Metal sleeve            |
| 8              | <a href="#">18-3306-25</a> | Condenser               | 21             | <a href="#">18-8721-21</a> | Compressor              |
| 9              | A31828-002                 | Adaptor flange          |                | <a href="#">18-8711-50</a> | Overload for compressor |
| 10             | A31828-001                 | Adaptor flange          |                |                            |                         |
| 11             | A33990-015                 | Bracket                 |                |                            |                         |

# NDE754 SERVICE PARTS

## Water System



| ITEM<br>NUMBER | PART<br>NUMBER             | DESCRIPTION                        |
|----------------|----------------------------|------------------------------------|
| 1              | <a href="#">13-0674-06</a> | Tubing, 11" req.                   |
| 2              | <a href="#">02-2814-07</a> | Hose clamp                         |
| 3              | <a href="#">05-0501-01</a> | Evap. inlet tubing (preformed)     |
| 4              | <a href="#">13-0674-06</a> | Tubing, 11" req.                   |
| 5              | <a href="#">12-2760-21</a> | Water sensor                       |
| 6              | <a href="#">13-0840-01</a> | Rubber plug                        |
| 7              | <a href="#">A35952-001</a> | Reservoir bracket                  |
| 8              | <a href="#">13-0079-03</a> | Drain tubing, 25" req.             |
| 9              | <a href="#">A31757-001</a> | Drain assy                         |
| 10             | <a href="#">12-1646-05</a> | Inlet water valve                  |
| 11             | <a href="#">13-0674-06</a> | Drain tubing 24" req.              |
| 12             | <a href="#">13-0079-03</a> | Drain tubing 4" req.               |
| 13             | <a href="#">16-0670-02</a> | Tee                                |
| 14             | <a href="#">13-0079-03</a> | Drain tubing 24" req.              |
| 15             | <a href="#">16-0835-01</a> | Water inlet fitting                |
| 16             | <a href="#">13-0674-07</a> | Sink drain tube 33" req.           |
| 17             | <a href="#">02-3692-21</a> | Drain casting                      |
| 18             | <a href="#">02-2814-10</a> | Hose clamp                         |
| 19             | <a href="#">02-3266-03</a> | Plunger/seat                       |
| 20             | <a href="#">02-3266-02</a> | Float valve                        |
| 21             | <a href="#">02-3266-20</a> | Reservoir Assy,<br>includes 19, 20 |
| 22             | <a href="#">16-0871-01</a> | Insert                             |

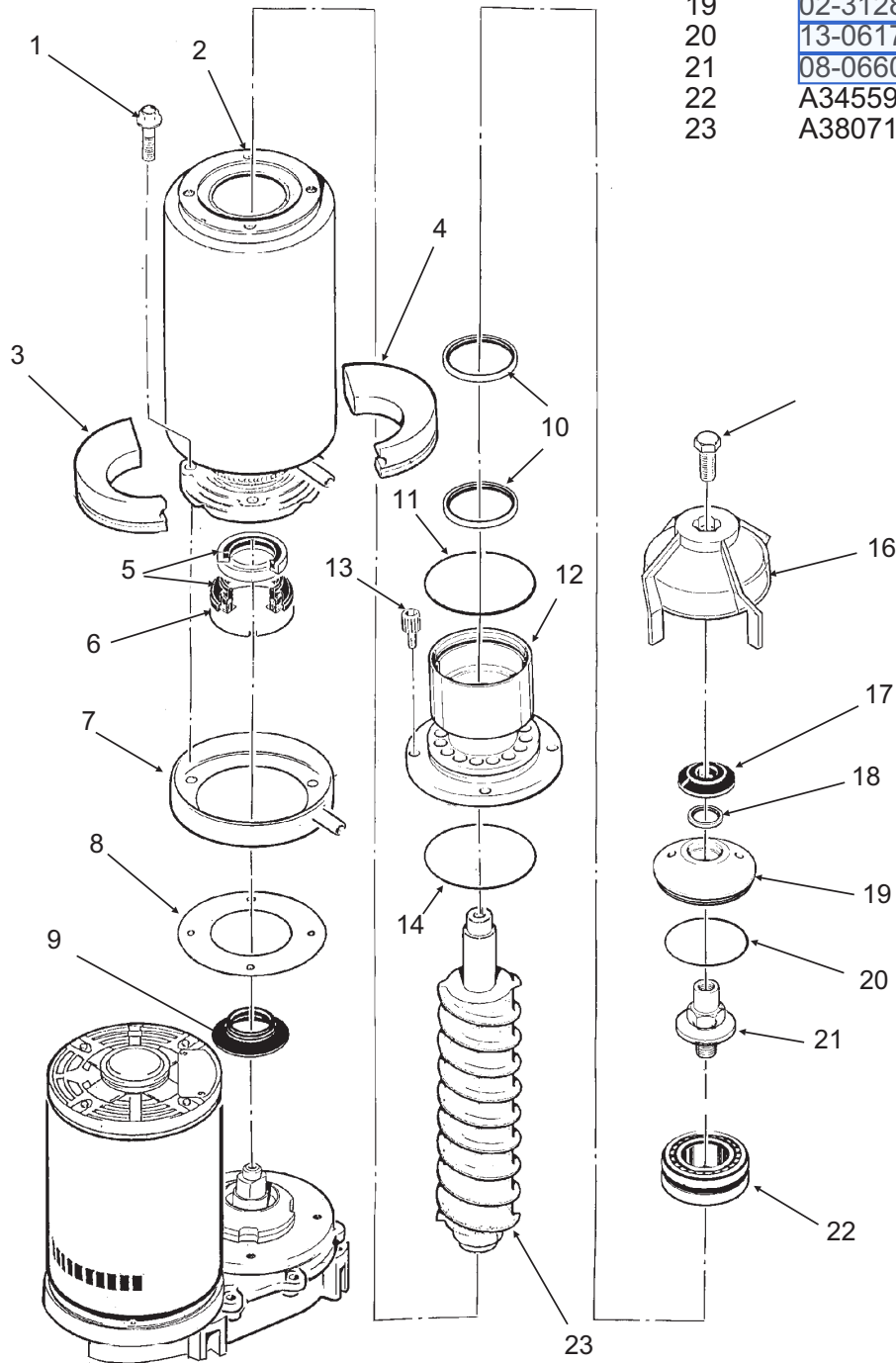


# NDE754 SERVICE PARTS

## Evaporator

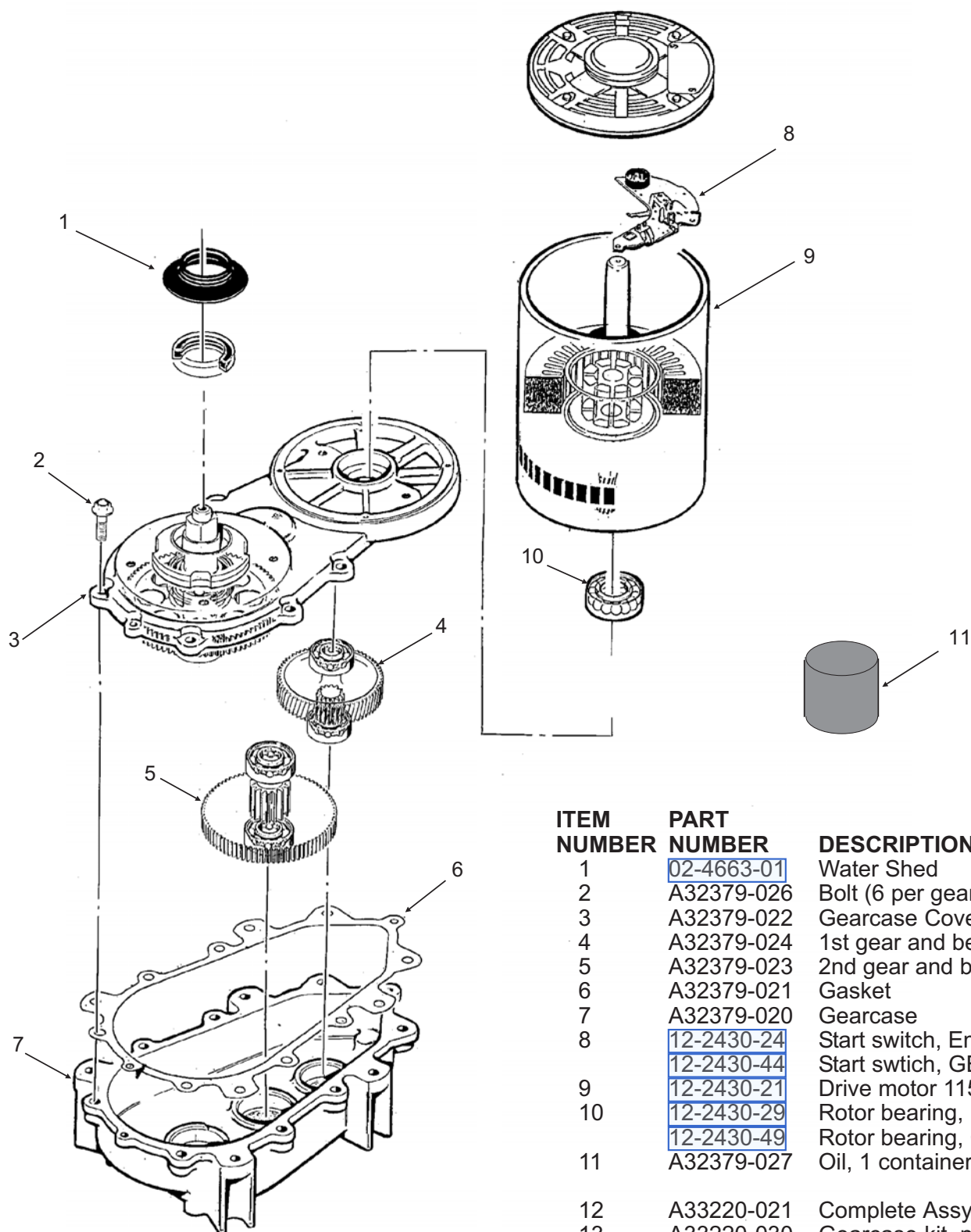
| ITEM<br>NUMBER | PART<br>NUMBER | DESCRIPTION             |
|----------------|----------------|-------------------------|
| 1              | 03-1420-03     | Cap Screw               |
|                | 03-1417-13     | Lockwasher              |
| 2              | A33194-020     | Evaporator              |
| 3              | 02-4358-01     | Insulation              |
| 4              | no number      | Included in item 3      |
| 5              | 02-0929-23     | Water seal              |
| 6              | A32777-001     | Retaining ring for seal |
| 7              | 02-3837-01     | Drip pan                |

| ITEM<br>NUMBER | PART<br>NUMBER | DESCRIPTION              |
|----------------|----------------|--------------------------|
| 8              | 13-0704-00     | Gasket                   |
| 9              | 02-4663-01     | Water shed               |
| 10             | 02-2977-01     | Lip Seal                 |
| 11             | 13-0617-54     | O-Ring                   |
| 12             | A32900-020     | Breaker (incl. 10,14,22) |
| 13             | 03-1544-08     | Soc. head screw          |
| 14             | 13-0617-45     | O-ring                   |
| 15             | 03-1405-52     | Hex cap screw            |
| 16             | 02-3001-01     | Ice sweep                |
| 17             | 13-0871-01     | Water shed               |
| 18             | 02-2978-01     | Lip seal                 |
| 19             | 02-3128-20     | Breaker cover            |
| 20             | 13-0617-52     | O-ring                   |
| 21             | 08-0660-01     | Auger stud               |
| 22             | A34559-020     | Bearing                  |
| 23             | A38071-021     | Auger                    |



# NDE754 SERVICE PARTS

## Gearmotor

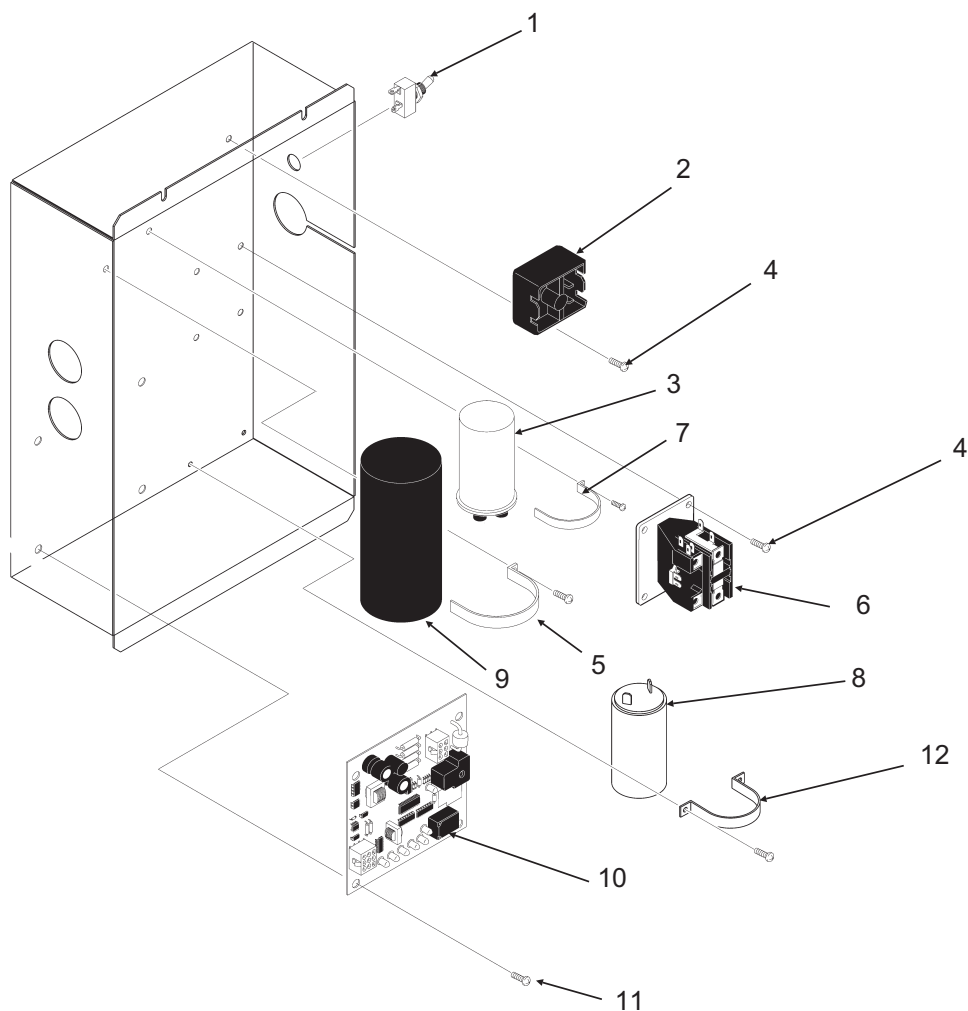


| ITEM<br>NUMBER | PART<br>NUMBER             | DESCRIPTION                   |
|----------------|----------------------------|-------------------------------|
| 1              | <a href="#">02-4663-01</a> | Water Shed                    |
| 2              | A32379-026                 | Bolt (6 per gear box)         |
| 3              | A32379-022                 | Gearcase Cover*               |
| 4              | A32379-024                 | 1st gear and bearings         |
| 5              | A32379-023                 | 2nd gear and bearings         |
| 6              | A32379-021                 | Gasket                        |
| 7              | A32379-020                 | Gearcase                      |
| 8              | <a href="#">12-2430-24</a> | Start switch, Emerson         |
|                | <a href="#">12-2430-44</a> | Start switch, GE split phase  |
| 9              | <a href="#">12-2430-21</a> | Drive motor 115v              |
| 10             | <a href="#">12-2430-29</a> | Rotor bearing, Emerson        |
|                | <a href="#">12-2430-49</a> | Rotor bearing, GE split phase |
| 11             | A32379-027                 | Oil, 1 container              |
| 12             | A33220-021                 | Complete Assy, 115v           |
| 13             | A33220-030                 | Gearcase kit, no motor        |

\* Note: Gearcase cover includes cover, output shaft, key, output gear, bearings and seal.

# NDE754 SERVICE PARTS

## Control Box

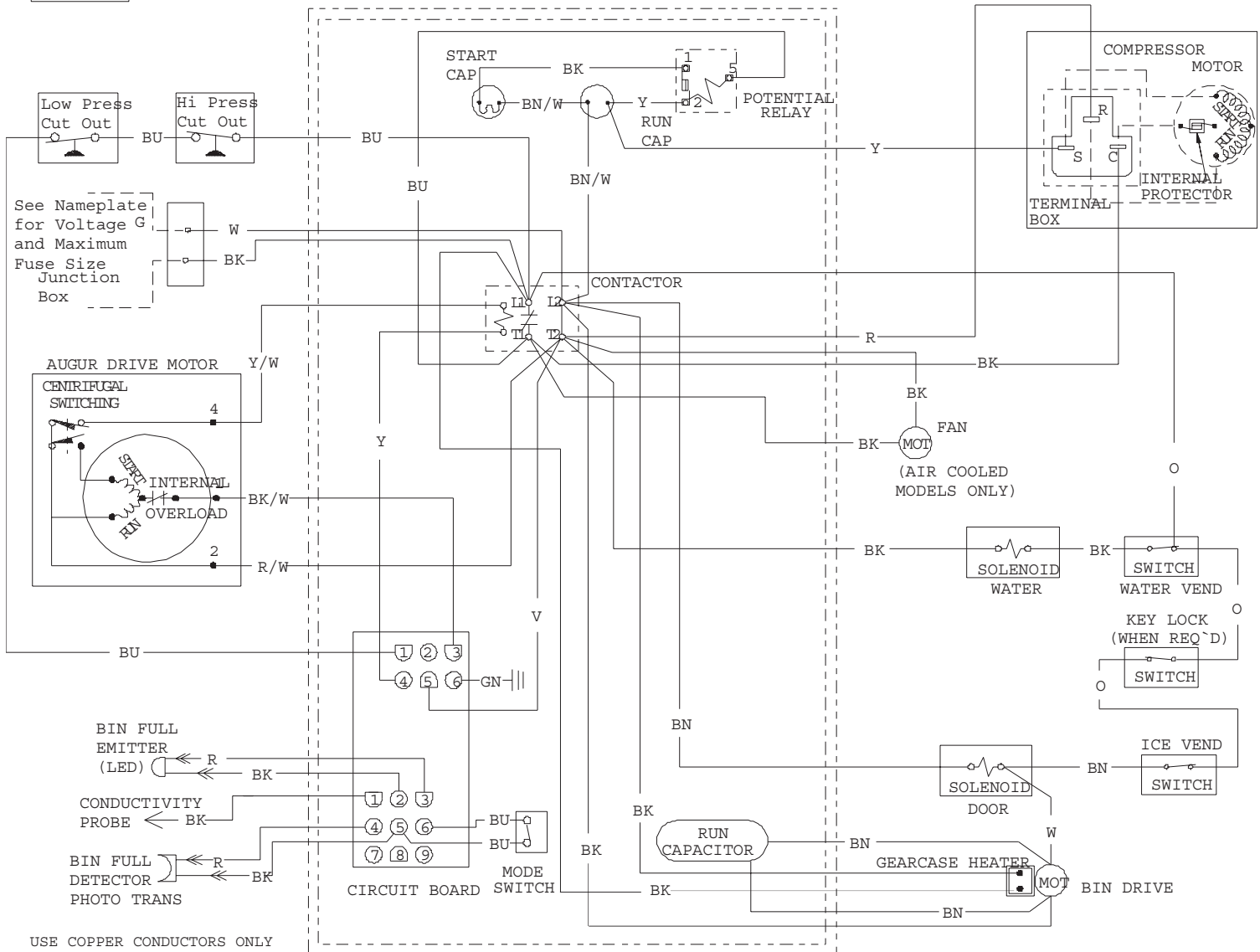


| ITEM<br>NUMBER  | PART<br>NUMBER | DESCRIPTION                        |
|-----------------|----------------|------------------------------------|
| 1               | 12-2637-01     | Mode switch                        |
| 2               | 18-1903-50     | Potential Relay                    |
| 3               | 18-1902-45     | Run capacitor for compressor       |
| 4               | 03-1531-01     | Screw                              |
| 5               | A35971-001     | Capacitor bracket                  |
| 6               | 12-2469-03     | Contactor 115v                     |
| 7               | A35971-002     | Capacitor bracket                  |
| 8               | 18-3701-01     | Run capacitor-bin drive motor      |
| 9               | 18-1901-03     | Start capacitor                    |
| 10              | 12-2835-01     | Circuit board                      |
| 11              | A33219-001     | Standoff                           |
| 12              | A35971-001     | Capacitor bracket                  |
| NOT ILLUSTRATED |                |                                    |
| 13              | A34528-015     | Control box cover                  |
| 14              | 12-2360-01     | Time delay relay (portion control) |
| 15              | A24258-002     | Potentiometer                      |

# NDE754 SERVICE PARTS

## Wiring Diagram

17-2861-01



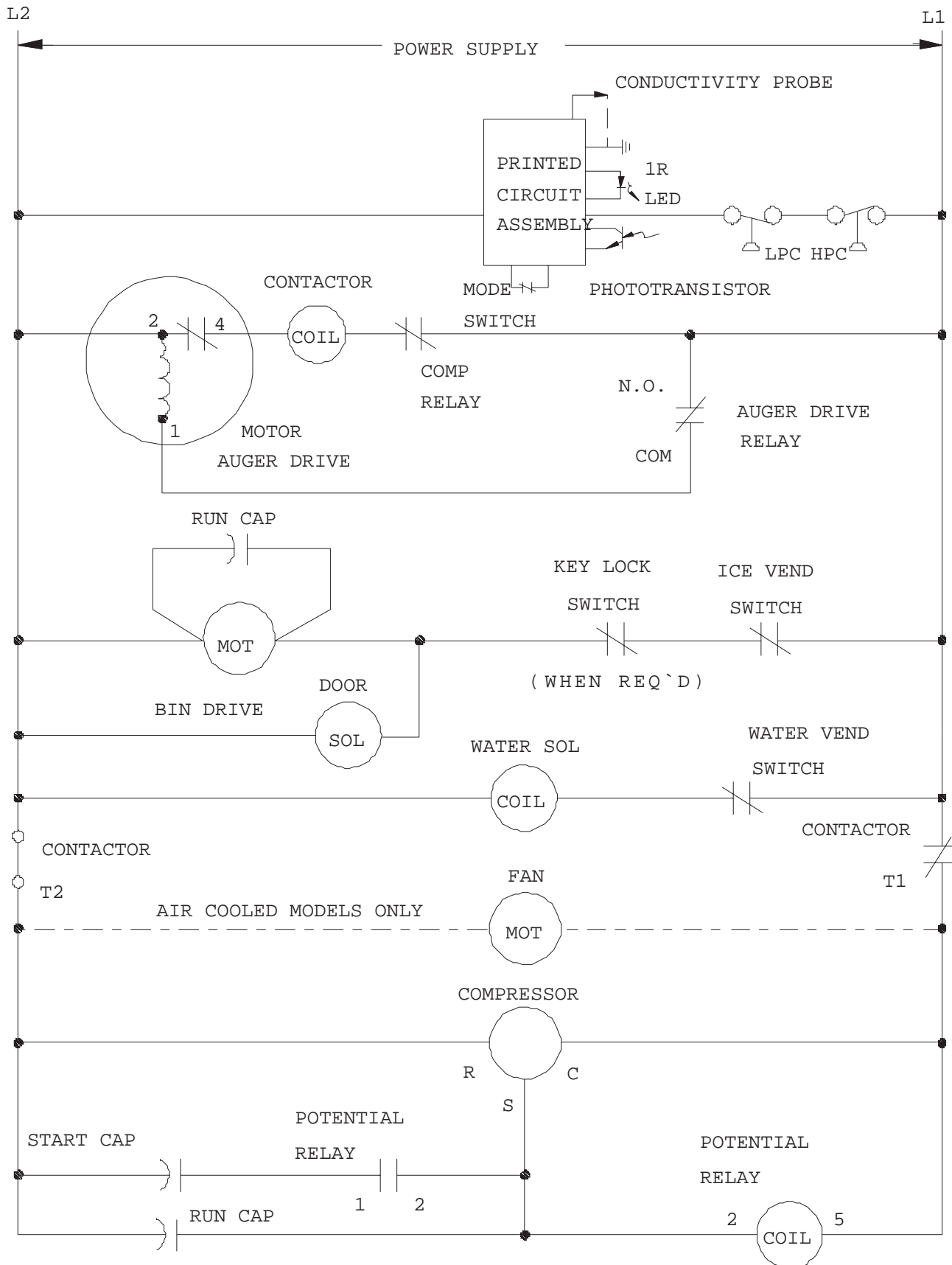
USE COPPER CONDUCTORS ONLY

THIS UNIT MUST BE GROUNDED

CONTROL BOX

# NDE754 SERVICE PARTS

## Schematic Diagram



ALL CONTROLS SHOWN IN NORMAL ICE MAKING MODE

WITH ALL DISPENSING SYSTEMS IN OPERATION.

# SERVICE BULLETIN

## Subject: NME, FME, NSE, NDE and TDE550/650 Top Bearing Lubrication

Two parts have been made available as helpful aids to use when lubricating the top bearing.

1. **02-3559-01** is a needle that snaps onto a standard grease gun fitting. Use it to insert and deeply pack the proper lubricant into the top bearing.
2. **A36808-001** is a tube of the proper lubricant, also designed to fit a standard grease gun.

Both numbers are in the parts price list.

Needle, shown inserted into bearing

