

NM650 SERVICE PARTS

This parts list contains the service parts and wiring diagrams for this model. Check the model number in question to be sure that it is applicable to this parts list.

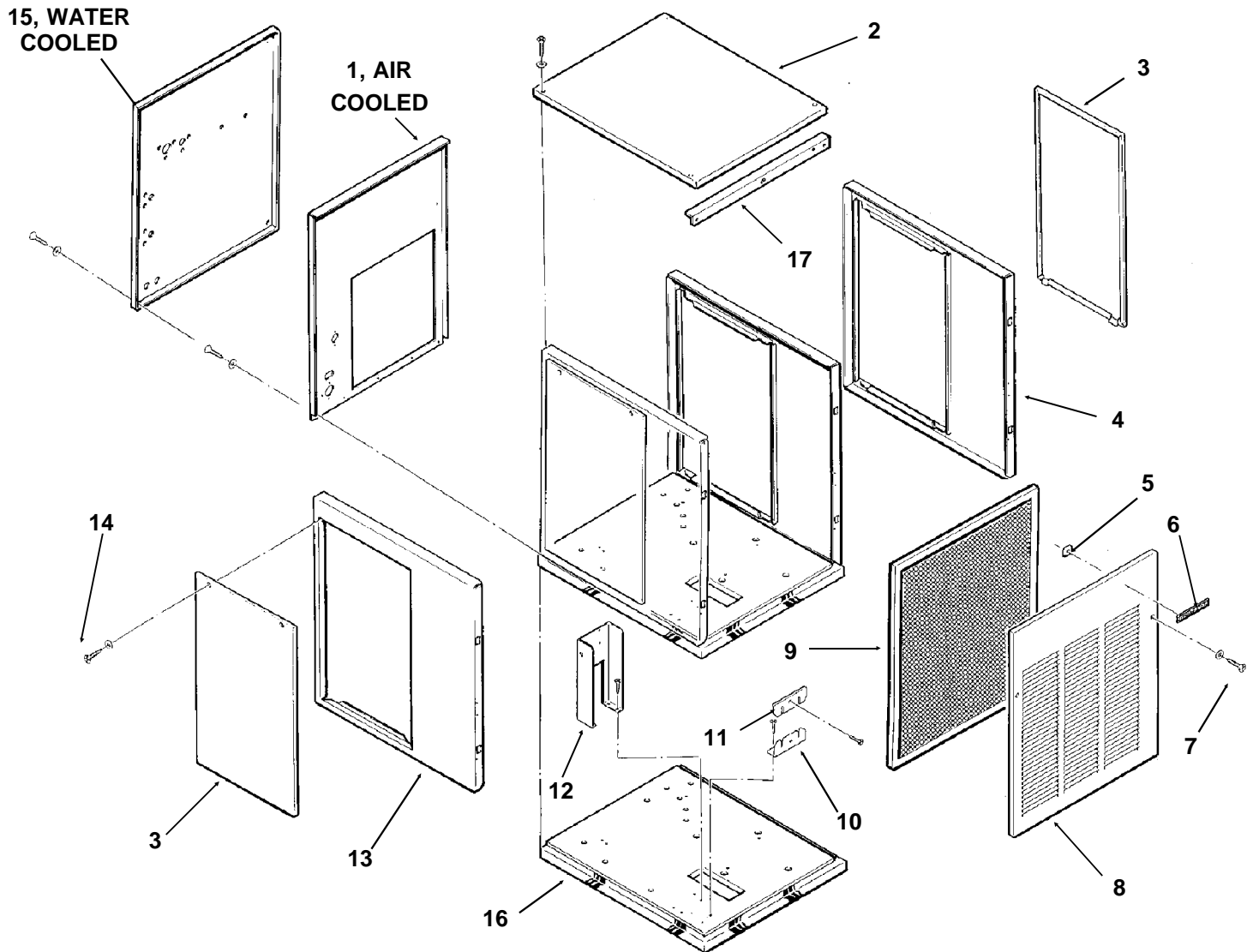
Caution: This model ice maker has been manufactured in two voltages, for electrical components, check to be certain that the part is the correct voltage for the machine.

TABLE OF CONTENTS

Cabinet.....	2
Air Cooled Refrigeration	3
Water Cooled Refrigeration	4
Water System	5
Gearmotor	6
Evaporator.....	7
Control Box	8
Wiring Diagrams	9
Product Update	12

NM650 SERVICE PARTS

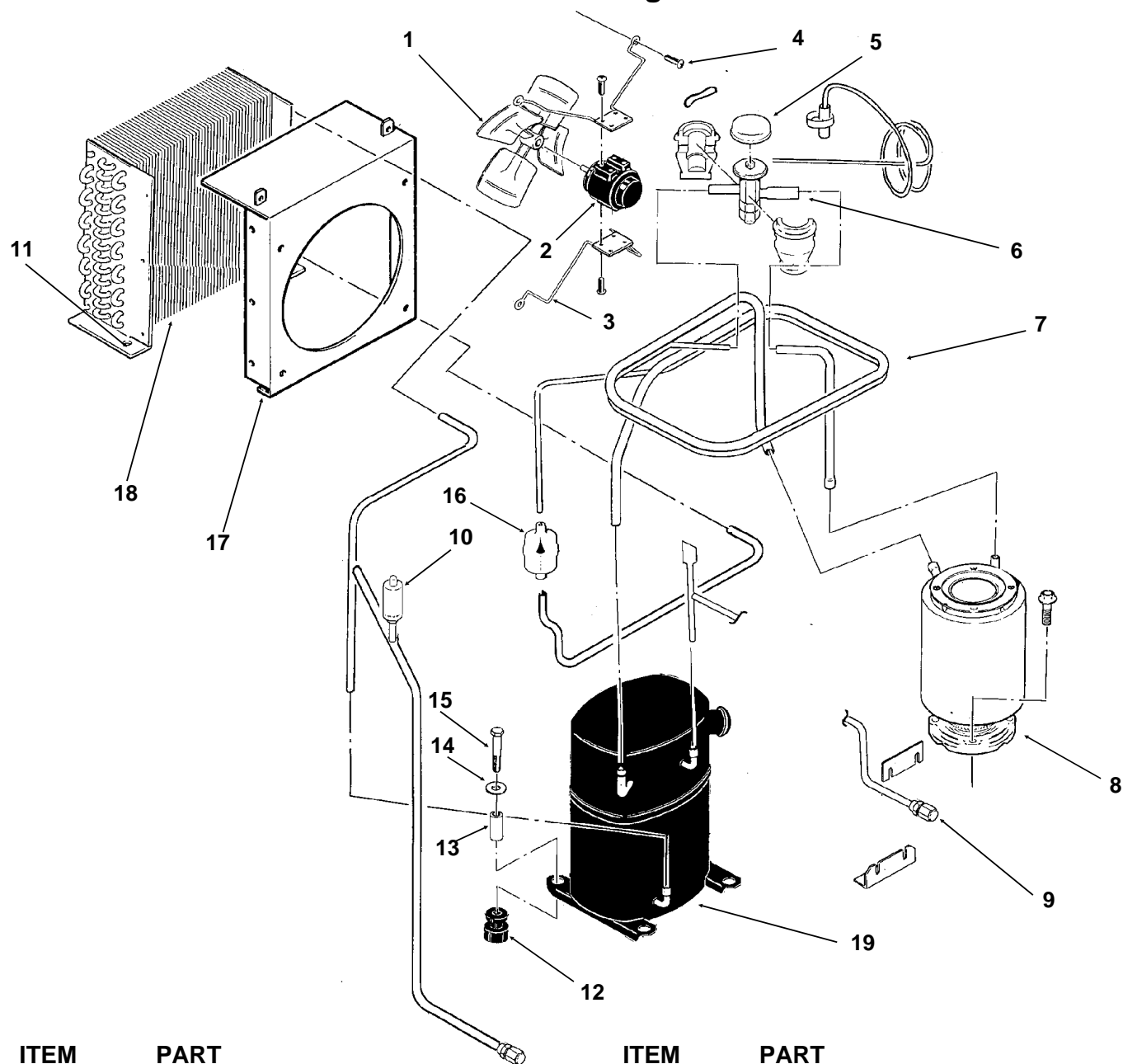
Cabinet Assembly



ITEM NUMBER	PART NUMBER	DESCRIPTION	ITEM NUMBER	PART NUMBER	DESCRIPTION
1	A34544-001	Back Panel, Air Cooled	9	<u>02-2976-01</u>	Air Filter
2	A33256-001	Top Panel, Painted	10	A31462-001	Tube Bracket
	A33256-002	Top Panel, S.S.	11	A31461-001	Tube Bracket
3	A34038-001	Service Panel, Painted	12	A34039-001	Control Box Support
	A34038-002	Service Panel, S.S.	13	A32435-001	Left Side Panel, Painted
4	A33292-001	Right Side Panel, Painted		A32435-002	Left Side Panel, S.S.
	A33292-002	Right Side Panel, S.S.	14	<u>03-1404-12</u>	Screw
5	<u>03-0271-00</u>	Speed Clip	15	A33252-001	Rear Panel, Water Cooled Painted Only
6	<u>15-0711-01</u>	Emblem			
7	<u>03-1419-08</u>	Screw	16.	A34042-001	Base
8	A33255-001	Front Panel, Painted	17	A34348-001	Front Brace, Air Cooled
	A33255-002	Front Panel, S.S.			

NM650 SERVICE PARTS

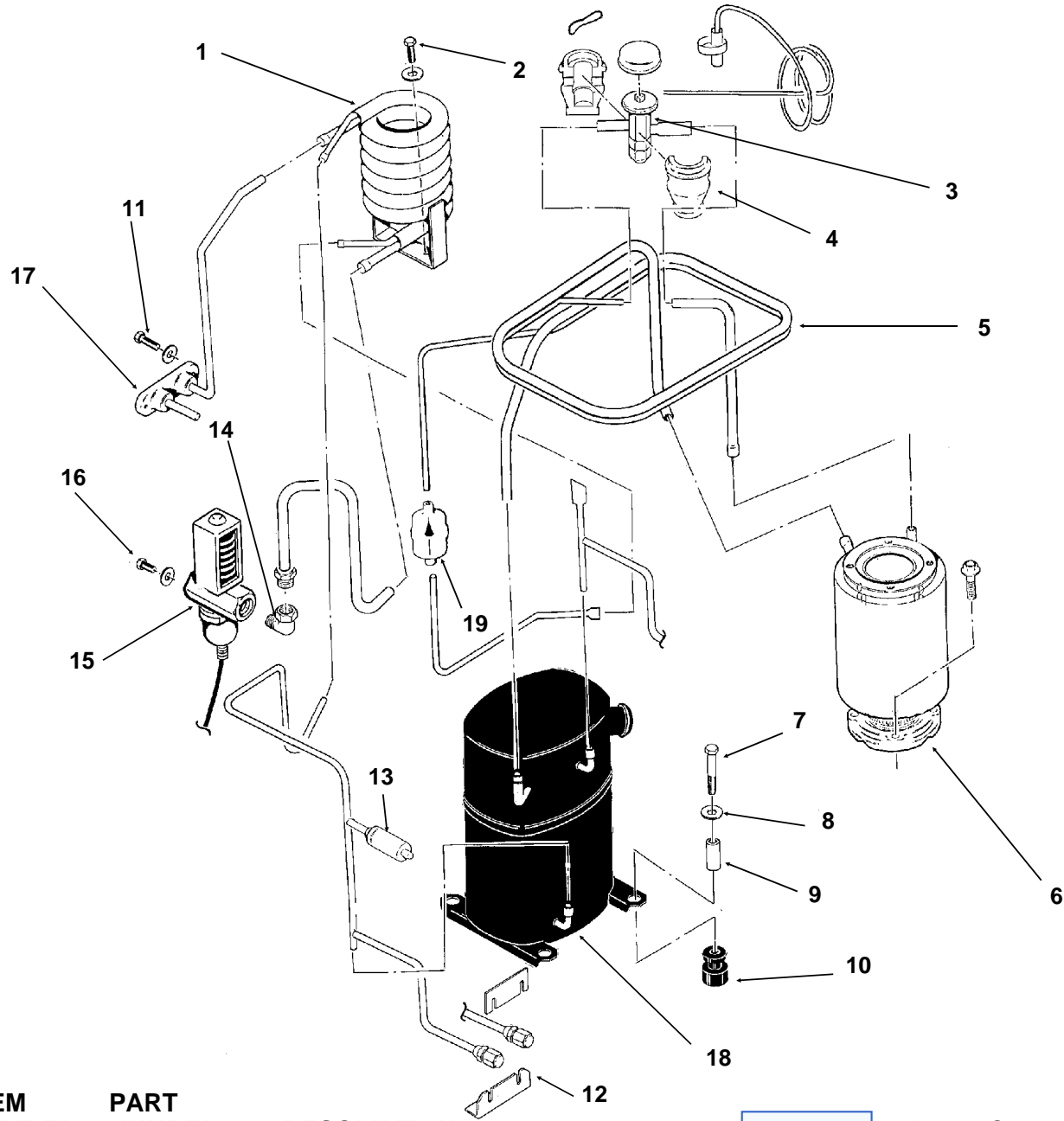
Air Cooled Refrigeration



ITEM NUMBER	PART NUMBER	DESCRIPTION	ITEM NUMBER	PART NUMBER	DESCRIPTION
1	18-3815-01	Fan Blade	12	18-2200-28	Grommet
2	12-1576-02	Fan Motor 208-230 v	13	18-2200-27	Sleeve
	12-1576-01	Fan Motor 115 v	14	03-1407-07	Washer
3	02-2378-01	Fan Bracket	15	03-1405-20	Cap Screw
4	03-1531-01	Screw	16	02-3319-02	Dryer
5	A32961-020	Insulation Kit (3 piece)	17	A34618-001	Fan Shroud
6	16-0780-21	Thermo Expansion Valve		A34617-001	Fan shroud cover
7	A34536-001	Suction Line	18	18-7800-01	Condenser
8	A33194-020	Evaporator	19	18-6100-02	Compressor 208-230 v
9	16-0560-00	Valve Core		18-6100-51	Overload for 208-230 v
	16-0563-00	Valve Cap		18-6100-01	Compressor 115 v
10	11-0446-22	Hi Pressure Cut Out		18-6100-50	Overload for 115 v
11	03-1645-01	Screw			

NM650 SERVICE PARTS

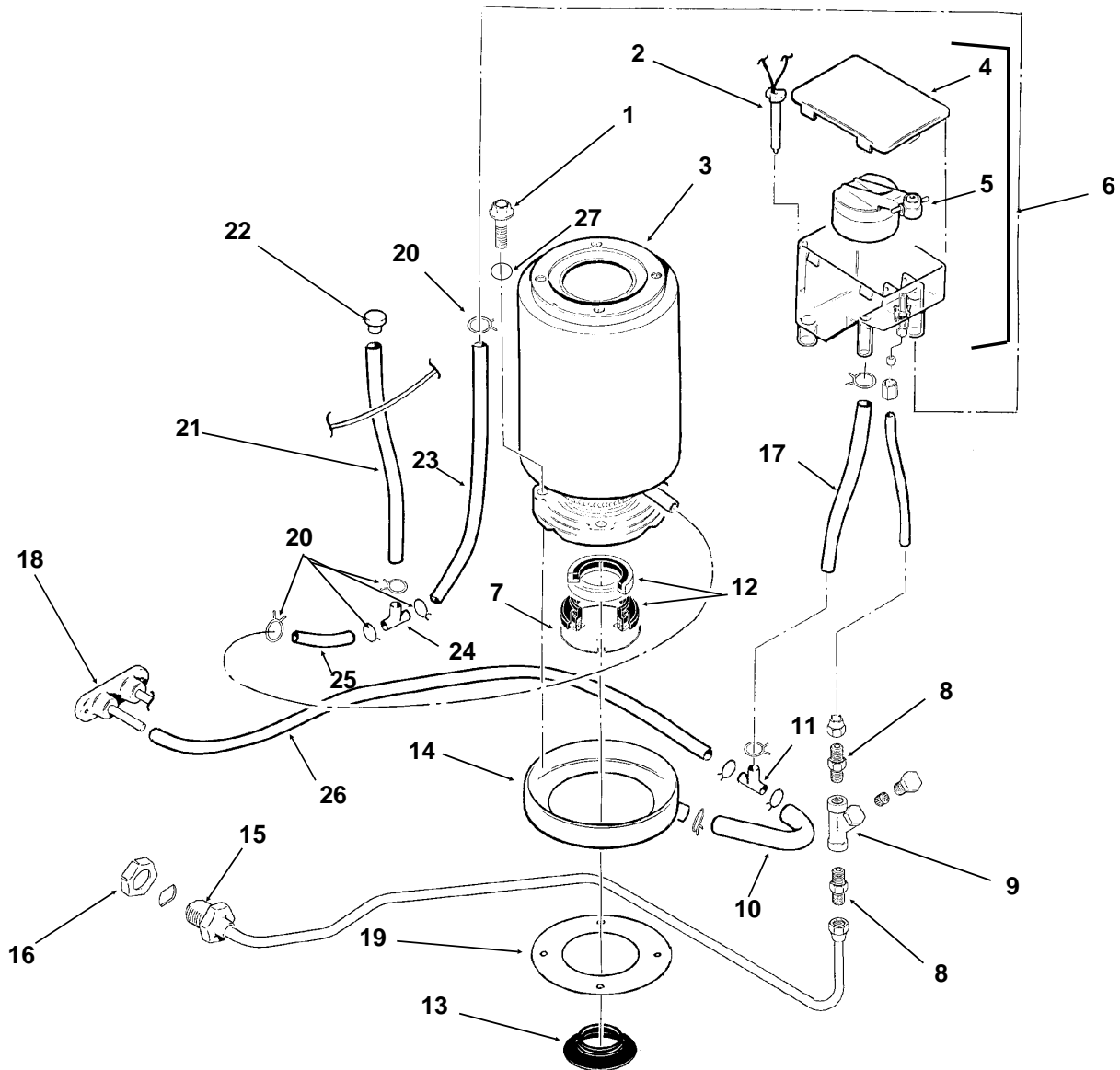
Water Cooled Refrigeration



ITEM NUMBER	PART NUMBER	DESCRIPTION			
1	18-3306-25	Condenser	12	16-0560-00	Valve Core
2	03-1645-01	Screw	13	16-0563-00	Valve Cap
3	16-0780-21	Thermo Expansion Valve	14	11-0446-22	Hi Pressure Cut Out
4	A32961-020	Insulation Kit (3 piece)	15	16-0401-02	Elbow
5	A34536-001	Suction Line	16	11-0424-01	Water Reg. Valve
6	A33194-020	Evaporator	17	03-1403-14	Screw
7	03-1405-20	Cap Screw	18	A34543-001	Drain Assembly
8	03-1407-07	Washer		18-6100-01	Compressor 115/60/1
9	18-2200-27	Sleeve		18-6100-50	Overload 115v
10	18-2200-28	Grommet		18-6200-02	Compressor
11	03-1645-01	Screw			208-230/60/1
			19	18-6100-51	Overload 208-220v
				02-3319-02	Dryer

NM650 SERVICE PARTS

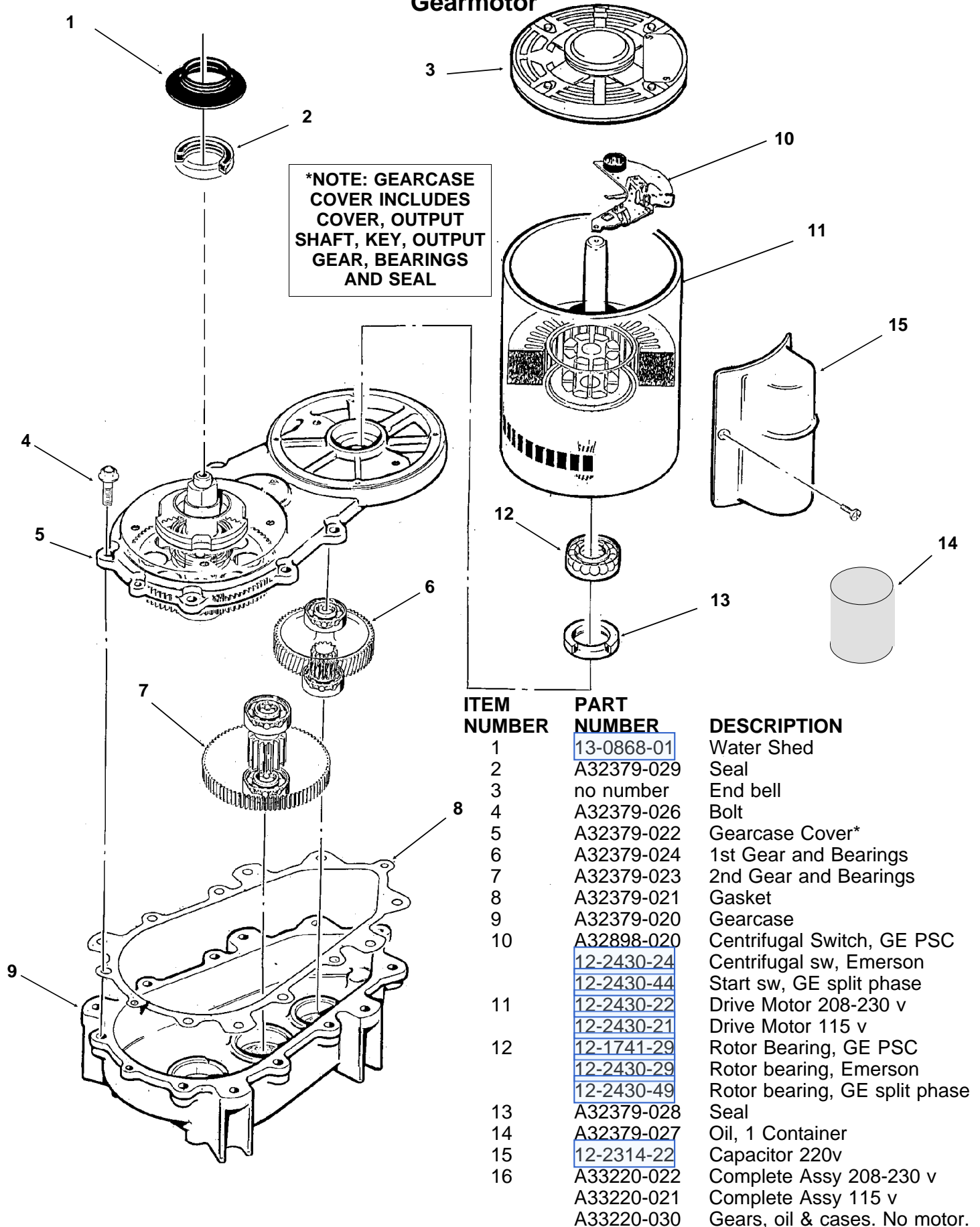
Water System



ITEM NUMBER	PART NUMBER	DESCRIPTION	ITEM NUMBER	PART NUMBER	DESCRIPTION
1	03-1420-03	Cap Screw	14	A32050-001	Drip Pan
2	A33101-021	Water Level Sensor	15	A27318-001	Water Inlet Fitting
3	A33194-020	Evaporator	16	03-1394-01	Pal Nut
4	02-2936-01	Res. Cover	17	13-0079-03	Res. Overflow, 8" req.
5	A32907-001	Float Assembly with pin housing seal, rubber seal, insert & float	18	A32282-004	Drain Casting, air cooled
6	A32929-020	Reservoir Assy Complete	19	13-0704-00	Gasket
7	A32777-001	Retaining Ring for seal	20	02-2814-08	Clamps
8	16-0791-01	Half Union	21	13-0674-06	Evap. Drain, 14" req.
9	16-0162-00	Strainer	22	A33205-001	Plug
10	13-0079-03	Tube, 3.2" req.	23	13-0674-06	Evap. Inlet Tube, 5" req.
11	16-0670-02	Tee	24	16-0670-01	Tee
12	02-0929-23	Water Seal	25	A33203-001	Tube, Preformed
13	13-0868-01	Water Shed	26	13-0079-03	Drain Tube, 24" req.
			27.	03-1417-13	Lockwasher

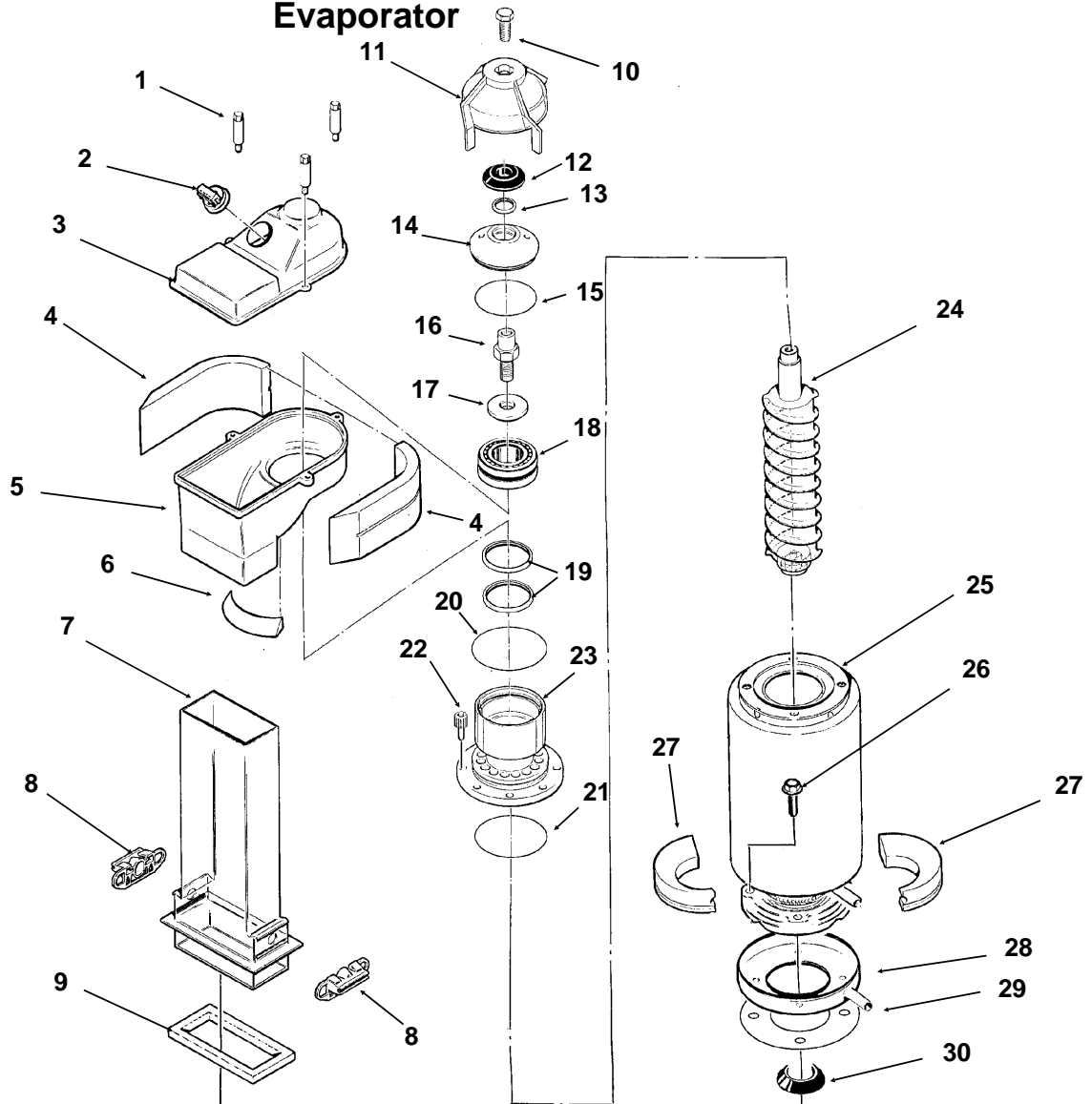
NM650 SERVICE PARTS

Gearmotor



NM650 SERVICE PARTS

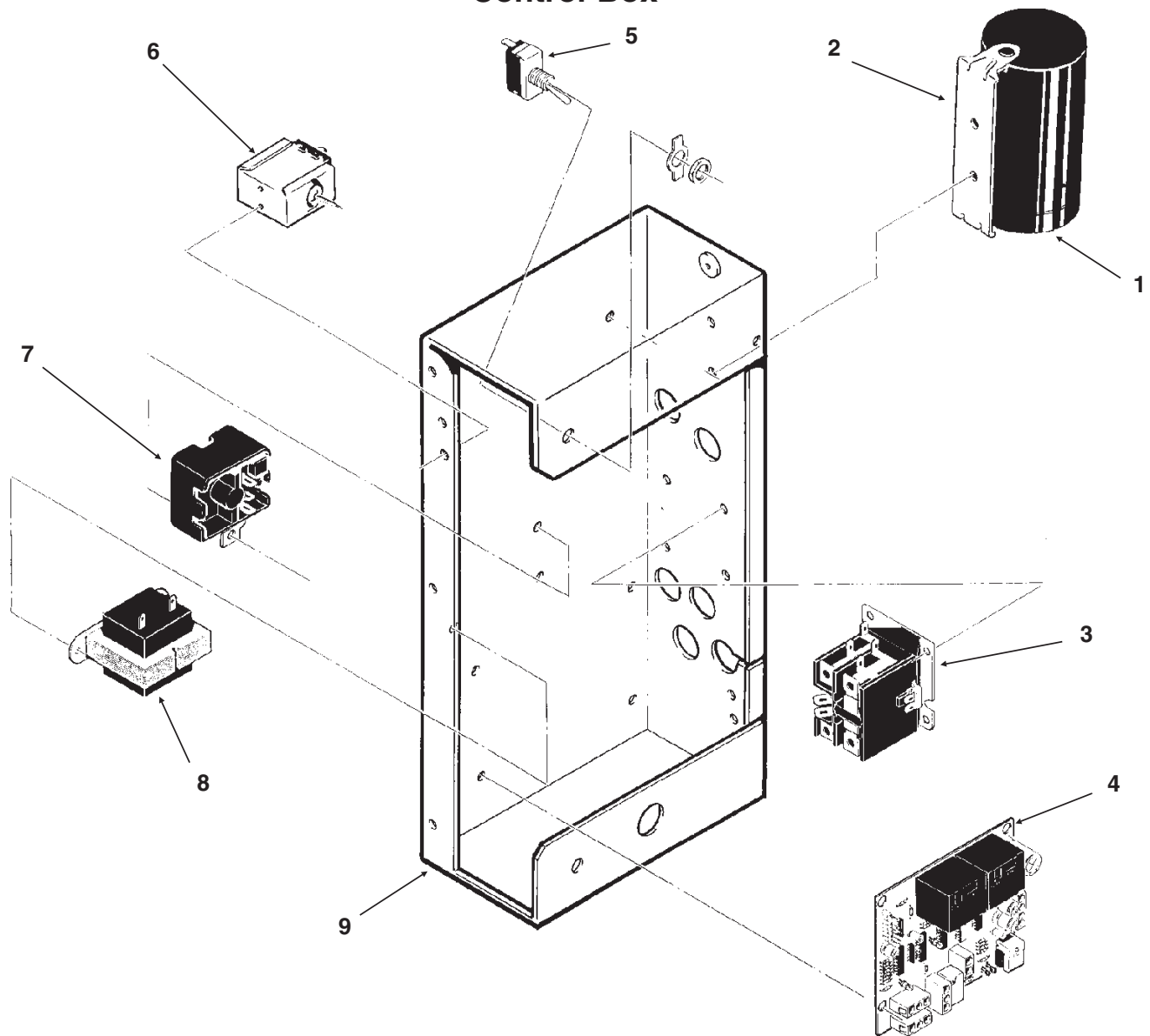
Evaporator



ITEM NUMBER	PART NUMBER	DESCRIPTION		
1.	02-2933-01	Hex Stud	16.	08-0660-01 Auger Stud
2.	A32891-020	Switch & housing assy	17.	part of item 16 Thrust Washer
3.	02-2930-01	Ice Chute Cover	18.	A34559-020 Bearing
4.	A32963-001	Insulation Top (half)	19.	02-2977-01 Lip Seal
5.	02-2926-01	Ice Chute Body	20.	13-0617-52 O-Ring
6.	A33102-001	Insulation Collar Inside	21.	13-0617-45 O-Ring
7.	A33210-001	Rubber Band	22.	03-1544-08 Soc. Head Screw
8.	02-2929-03	Ice Chute Lower	23.	A32900-020 Breaker
9.	A37708-021	Bin Controls Assy. (set of 2)	24.	A38071-021 Auger
10.	A32930-001	Chute Gasket	25.	A33194-020 Evaporator
11.	03-1405-52	Hex Cap Screw	26.	03-1405-41 Cap Screw
12.	02-3001-01	Ice Sweep	27.	A32962-001 Insulation Bot. (half)
13.	13-0871-01	Water Shed		A32962-002 Insulation half
14.	02-2978-01	Lip Seal	28.	A32050-001 Drip Pan
15.	02-3128-20	Breaker Cover	29.	13-0704-00 Drip Pan Gasket
	13-0617-54	O-Ring	30.	13-0868-01 Water Shed

NM650 SERVICE PARTS

Control Box

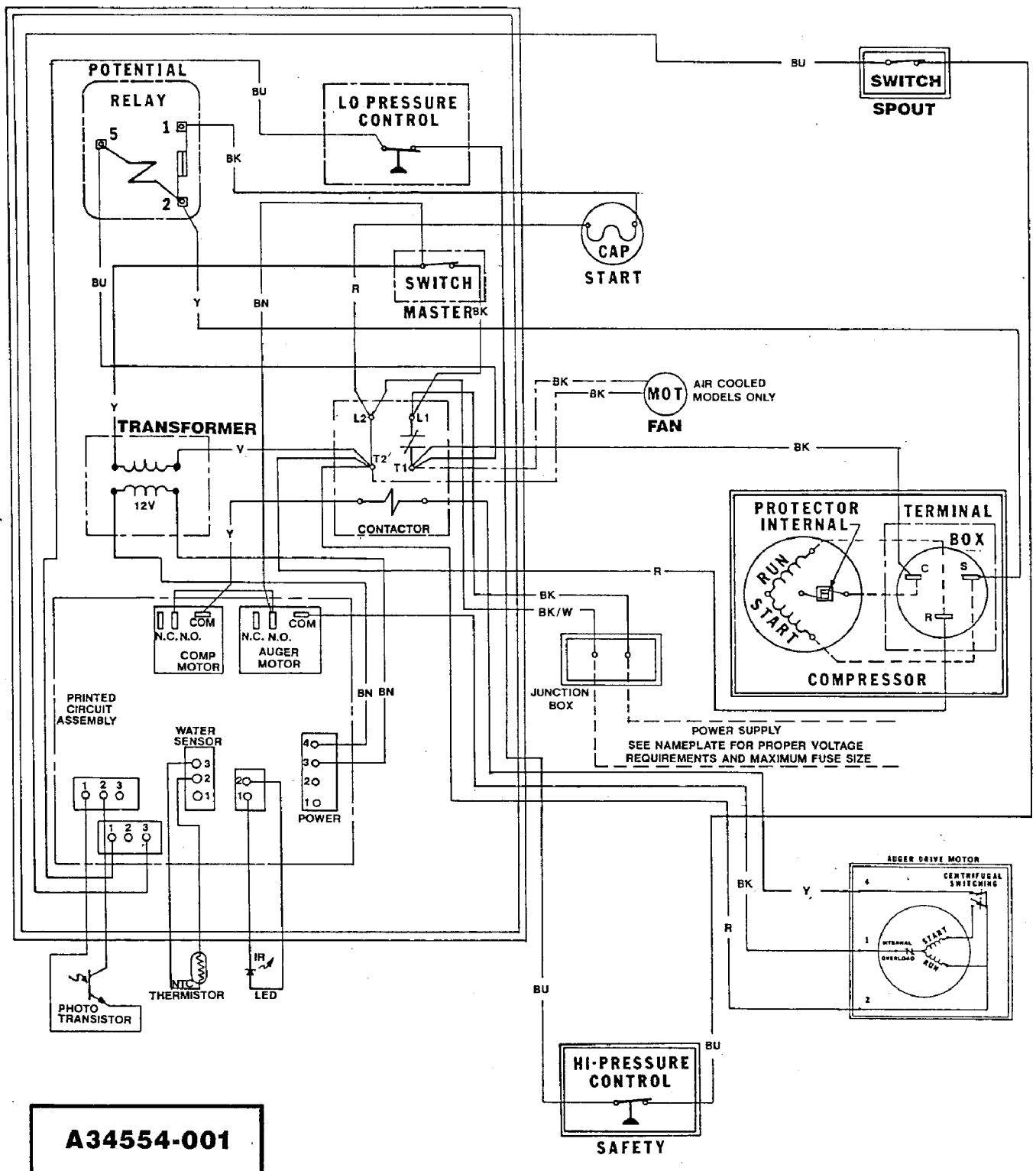


ITEM NUMBER	PART NUMBER	DESCRIPTION
1	18-1901-40	Start Cap 208-230 v
	18-1901-42	Start Capacitor 115 v
	18-2200-38	Start Capacitor Cap.
2.	18-2200-39	Start Capacitor Bracket
	03-1638-04	Screw
	03-1417-15	Lockwasher
3.	12-2469-02	Contactor 208-230 v
	12-2469-03	Contactor 115 v
4	A37750-021	Circuit Board
5.	12-0426-01	Master Switch
6.	11-0447-20	Low Pressure Control

ITEM NUMBER	PART NUMBER	DESCRIPTION
7	18-1903-33	Potential Relay 208-230 volt
	18-1903-44	Potential Relay 115 volt
8.	12-2285-21	Transformer 115v
	12-2285-22	Transformer 220v
9	no number	Control Box
NOT ILLUSTRATED		
10.	12-2337-02	3 Pin Plug Assy (Safety Circuit to Circuit Board)
11.	12-2340-01	4 Pin Plug Assy (Transformer to Circuit Board)
12.	A34055-001	Control Box Cover

NM650 SERVICE PARTS

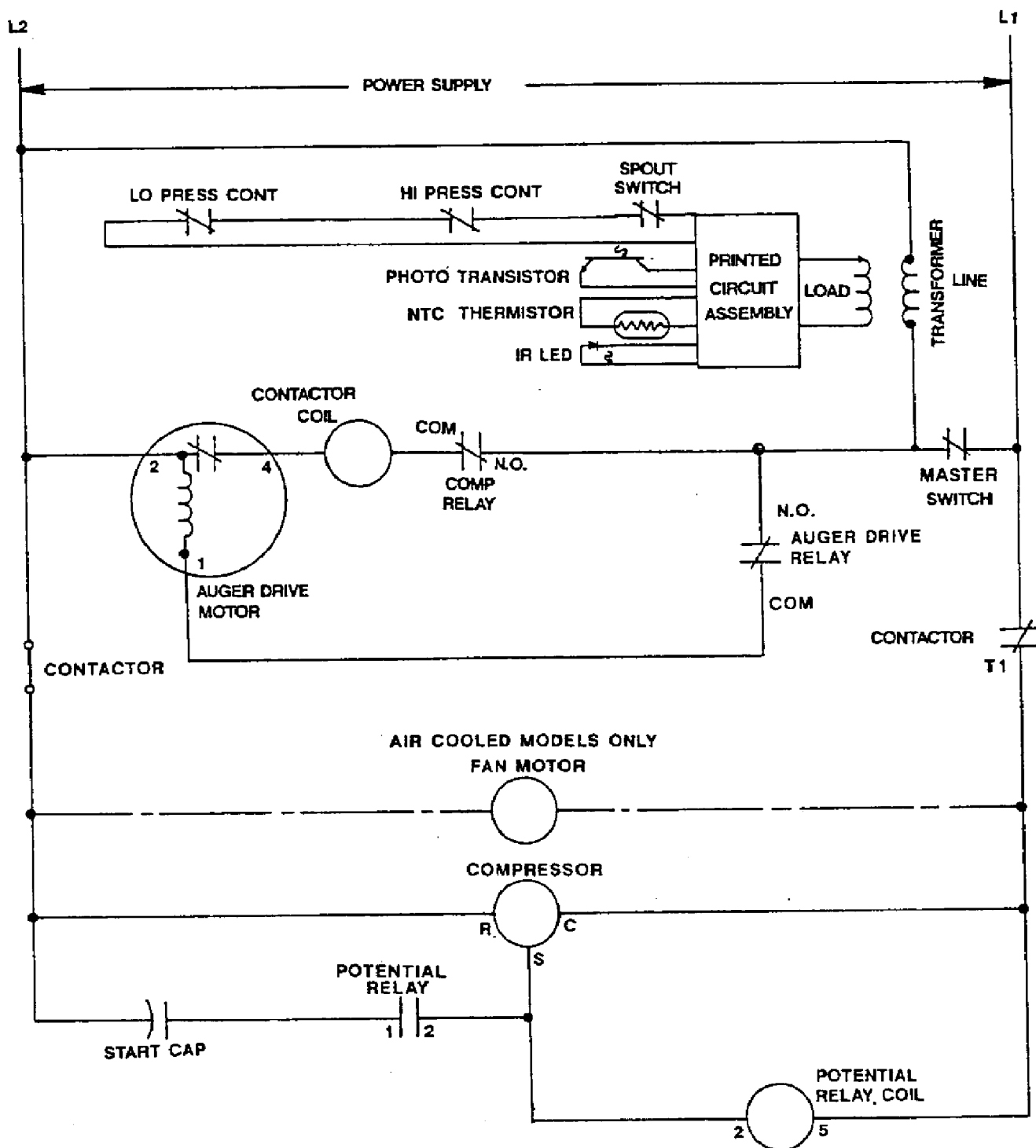
Component Layout Diagram



A34554-001

NM650 SERVICE PARTS

Schematic Diagram



USE COPPER CONDUCTORS ONLY THIS UNIT MUST BE GROUNDED

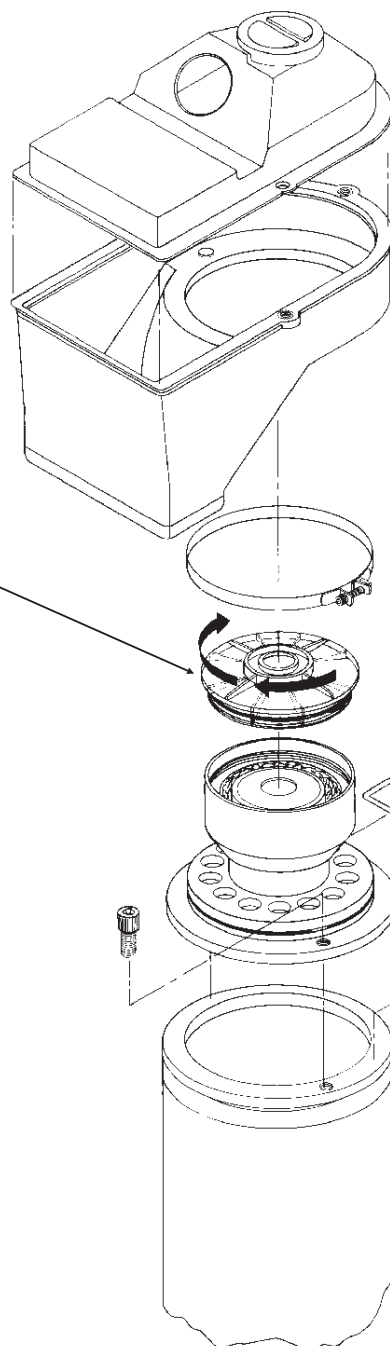
All Controls Shown in Normal Ice Making Mode.

Note: Dashed lines indicate field wiring which must be installed in accordance with the National Electric Code Using a Minimum of 14 ga. awg. wire.

NM650 SERVICE PARTS

ICE CHUTE UPDATE

Breaker Cover
Part Number
02-3128-20



Bail
Part Number
A34969-001

Product change began with January
1991 production.