

# SCCG30 & SCCP30 Service Parts

This is the illustrated parts list for the SCCG30 and the SCCP30 Residential Ice Machines

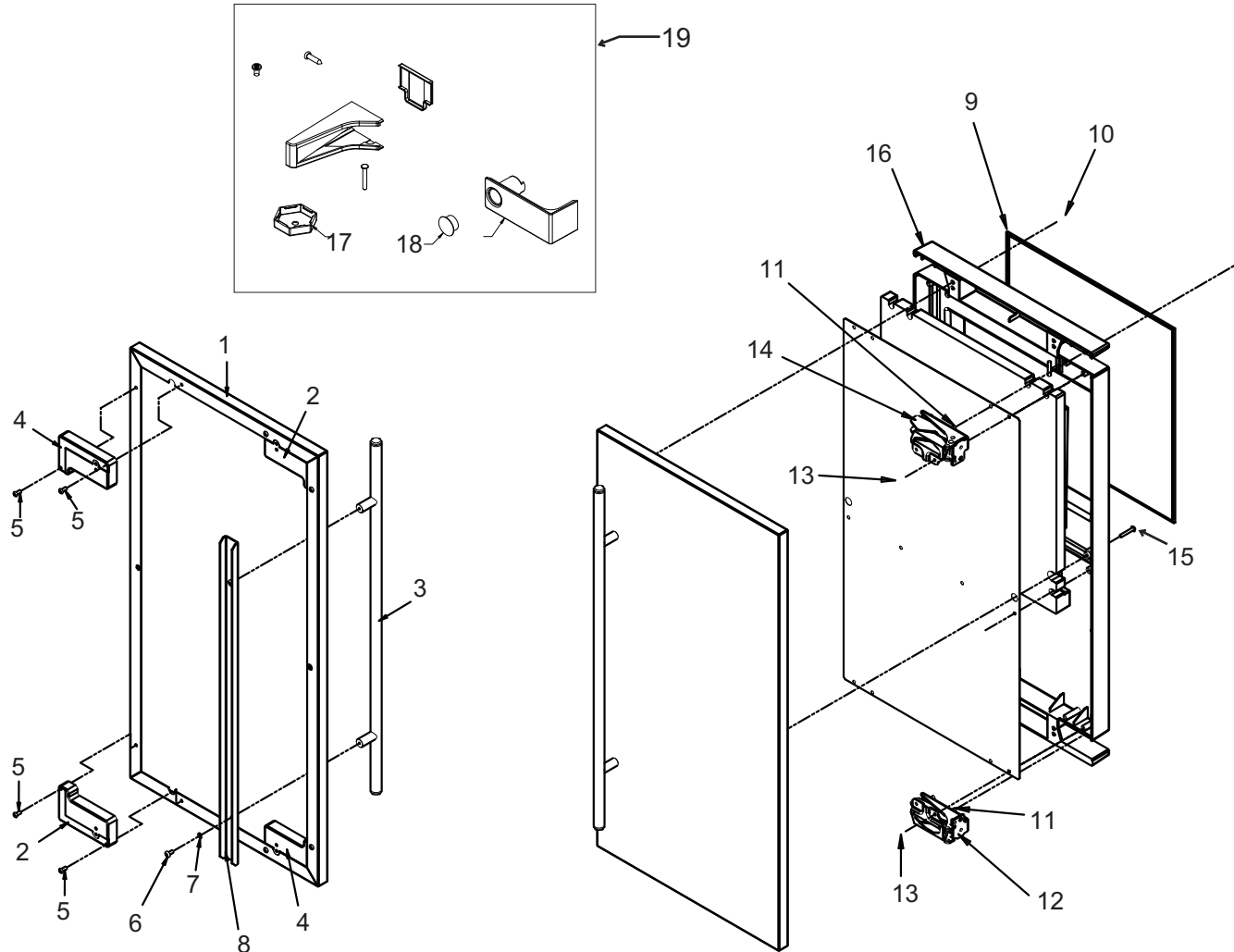
When ordering a service part, always refer to the complete model number of the equipment being repaired to be sure of obtaining the correct part. Many times there are slight differences between models, and having the complete model number will aide in selecting the correct part.

## Table of Contents

Door . . . . .	Page 2
Cabinet . . . . .	Page 3
Reservoir and Spray Pump . . . . .	Page 4
Under Bin Parts . . . . .	Page 6
Control System . . . . .	Page 7
Schematic Diagram . . . . .	Page 8
Wiring Diagram . . . . .	Page 9

# SCCG30 & SCCP30 Service Parts

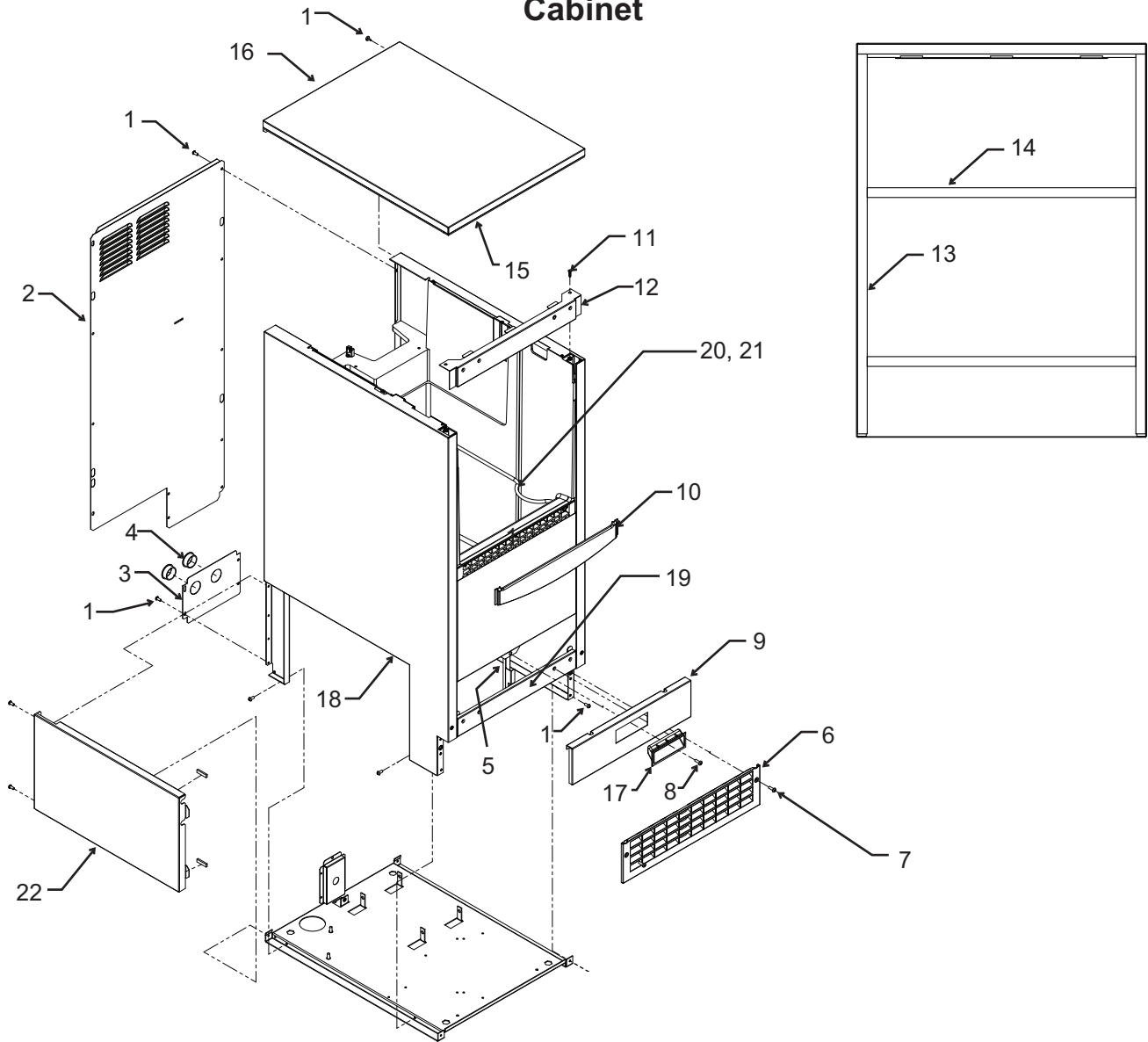
## Door



Item Number	Part Number	Description	Item Number	Part Number	Description
1	KDFS	Door panel kit. Kit includes items 1 thru 8.	12	<a href="#">02-3866-04</a>	Hinge - top left/bottom right
2	<a href="#">02-4433-01</a>	Corner block, RH	13	<a href="#">03-1404-24</a>	Screw - hinge to door
3	<a href="#">02-4430-01</a>	Handle, SS	14	<a href="#">02-3866-03</a>	Hinge
4	<a href="#">02-4433-02</a>	Corner block, LH	15	<a href="#">03-1403-67</a>	Screw
5	<a href="#">03-1531-01</a>	Screw	16	A39513-001	Door assembly, does not include door panel or hinges
6	<a href="#">03-3811-01</a>	Screw	17	<a href="#">02-4415-20</a>	Leg cap, pack of 4
7	<a href="#">03-1410-07</a>	Lockwasher	18	<a href="#">02-1875-07</a>	Hole plug
8	A39390-001	Support bracket	19	<a href="#">02-4474-01</a>	Hinge package
9	<a href="#">13-0949-03</a>	Door gasket			
10	<a href="#">03-1404-40</a>	Screw			
11	<a href="#">03-3818-01</a>	Screw - hinge to cabinet			

# SCCG30 & SCCP30 Service Parts

## Cabinet

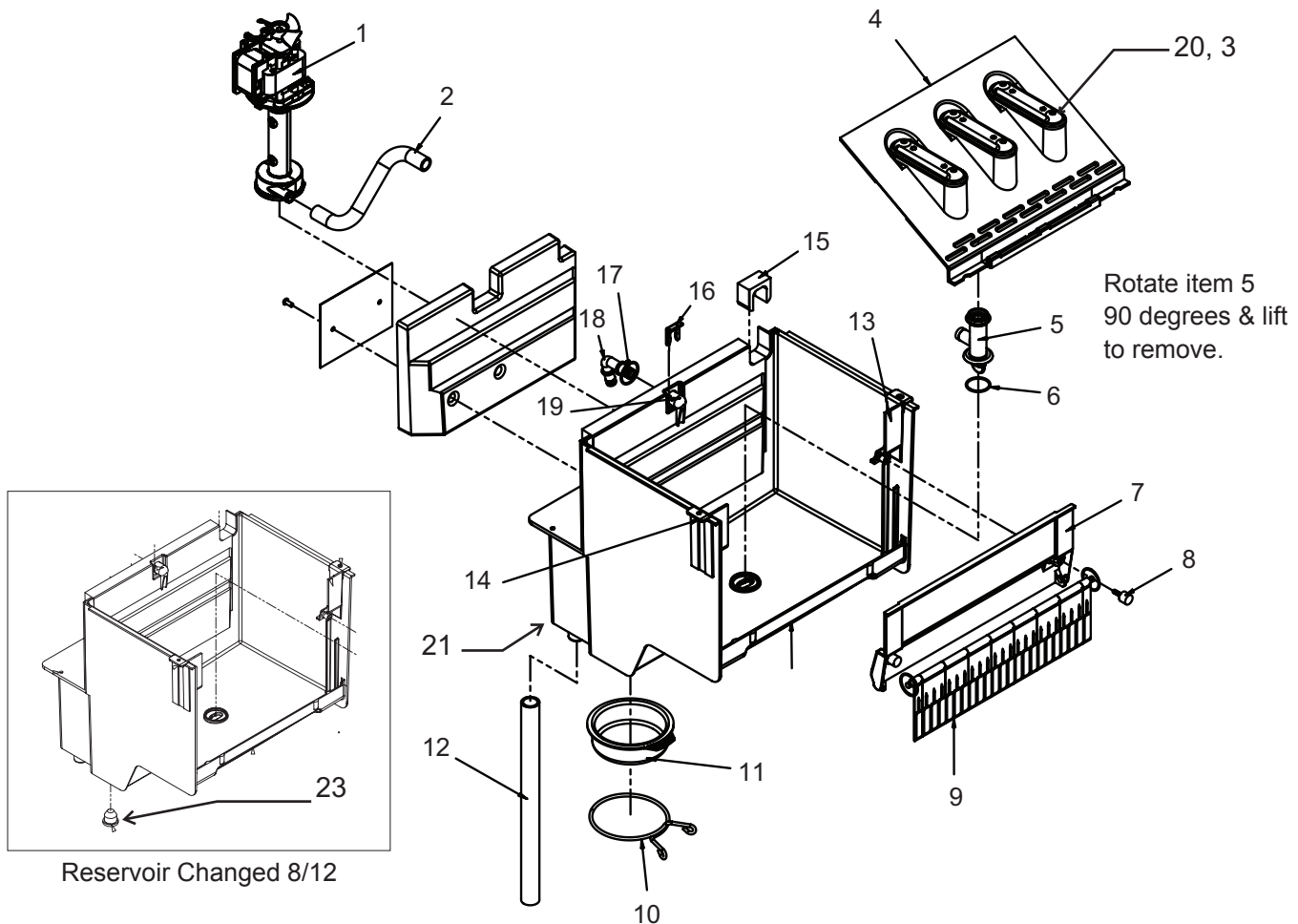


Item Number	Part Number	Description		
1	<a href="#">03-1404-10</a>	Screw	12	A39364-003 Top hinge brkt, RH SS
2	A39363-001	Back panel		A39364-007 Top hinge brkt, L & R SS*
3	A39389-001	Utility routing bracket	12a	<a href="#">03-3813-01</a> Screw to fill holes
4	<a href="#">12-1213-11</a>	Snap bushing	13	<a href="#">13-0943-05</a> Gasket
5	A39392-001	Srv panel mntg bracket	14	<a href="#">13-0943-03</a> Gasket strip
6	<a href="#">02-4390-01</a>	Kickplate	15	<a href="#">02-4426-01</a> Insulation pad
7	<a href="#">03-1403-86</a>	Screw	16	A39362-003 Top panel, SS
8	<a href="#">02-4441-01</a>	Panel handle	17	<a href="#">03-1403-86</a> Screw
9	A39381-003	Service panel, SS	18	A39618-001 SS cabinet & bin
10	<a href="#">02-4392-01</a>	Bin edging	19	A39385-003 Btm hinge brkt, L & R SS**
11	<a href="#">03-3836-03</a>	Screw	20	A34816-001 Bin stat bracket/scoop hldr
			21	<a href="#">02-4391-03</a> Scoop
			22	A39615-001 Service panel

\* changed 1/12 to add left and right hinge mounting.  
Painted parts no longer available.

# SCCG30 & SCCP30 Service Parts

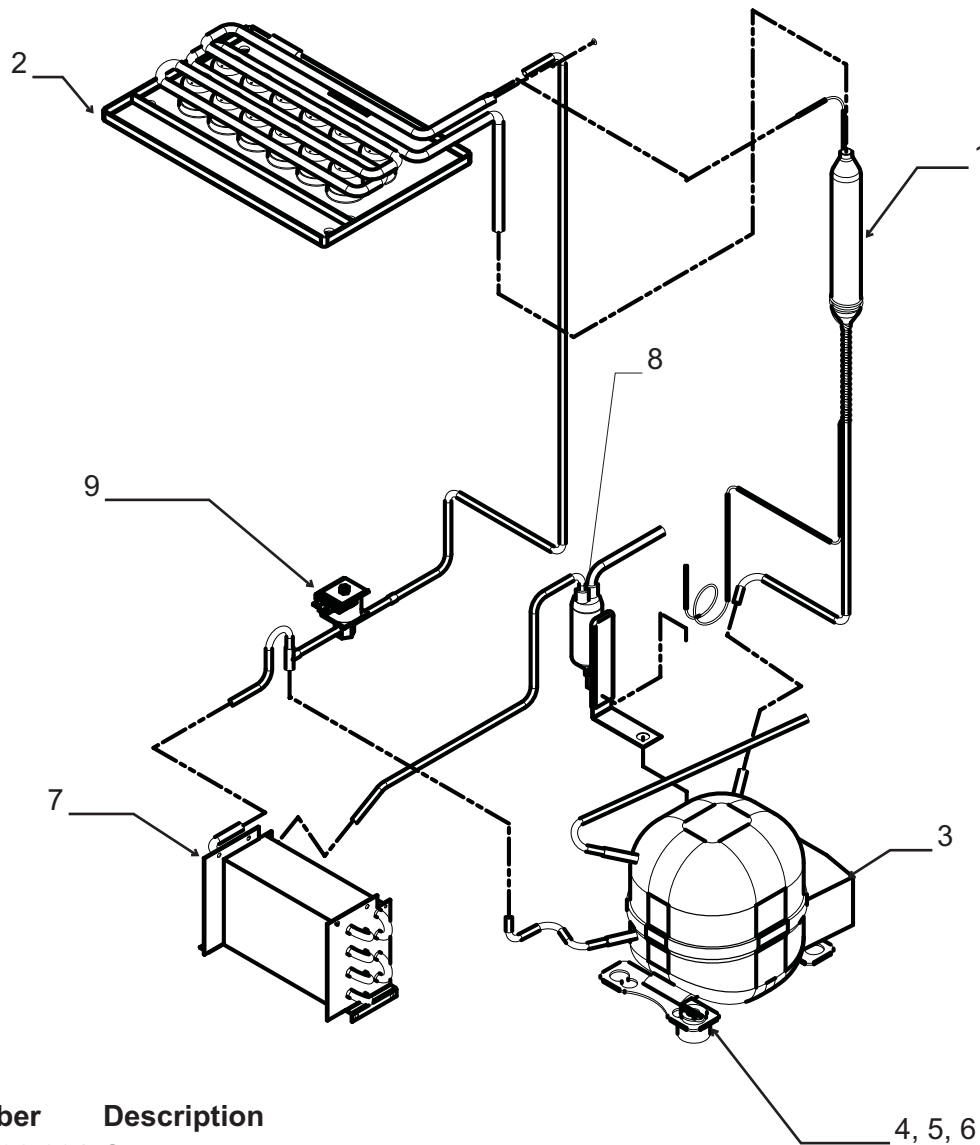
## Reservoir and Spray Pump



Item Number	Part Number	Description	Item Number	Part Number	Description
1	<a href="#">12-2986-21</a>	Water pump, incl item 1a	15	<a href="#">02-4475-01</a>	Grommet
1a	<a href="#">02-1719-00</a>	Fan blade for pump	16	<a href="#">02-4475-01</a>	Clip
2	<a href="#">02-4379-01</a>	Pump discharge hose	17	<a href="#">13-0617-04</a>	O-ring
3	<a href="#">02-4370-21</a>	Spray nozzle, kit. Set of 3 nozzles, o-rings, screws and nuts.	18	<a href="#">02-4381-01</a>	Barbed fitting
4	<a href="#">02-4371-03</a>	Spray platform	19	<a href="#">02-4381-02</a>	Spout
5	<a href="#">02-4368-01</a>	Water Tee	20	<a href="#">02-4373-01</a>	O-ring
6	<a href="#">13-0617-11</a>	O-ring	21	<a href="#">02-4427-02</a>	Reservoir
7	<a href="#">02-4365-01</a>	Front bracket	Item 22 is a plastic cover that goes over the evaporator tubing and cups. It was added in 2013. It is not shown.		
8	<a href="#">03-3892-01</a>	Thumb screw	22	<a href="#">02-4726-01</a>	Evaporator cover
9	<a href="#">A39357-001</a>	Curtain	23	<a href="#">13-0840-01</a>	Drain plug
10	<a href="#">02-4383-01</a>	Clamp			
11	<a href="#">02-4508-01</a>	Drain cap, not used after 8/12			
12	<a href="#">02-4428-01</a>	Drain tube			
13	<a href="#">02-4375-02</a>	Evap bracket, left			
14	<a href="#">02-4375-01</a>	Evap bracket, right			

# SCCG30 & SCCP30 Service Parts

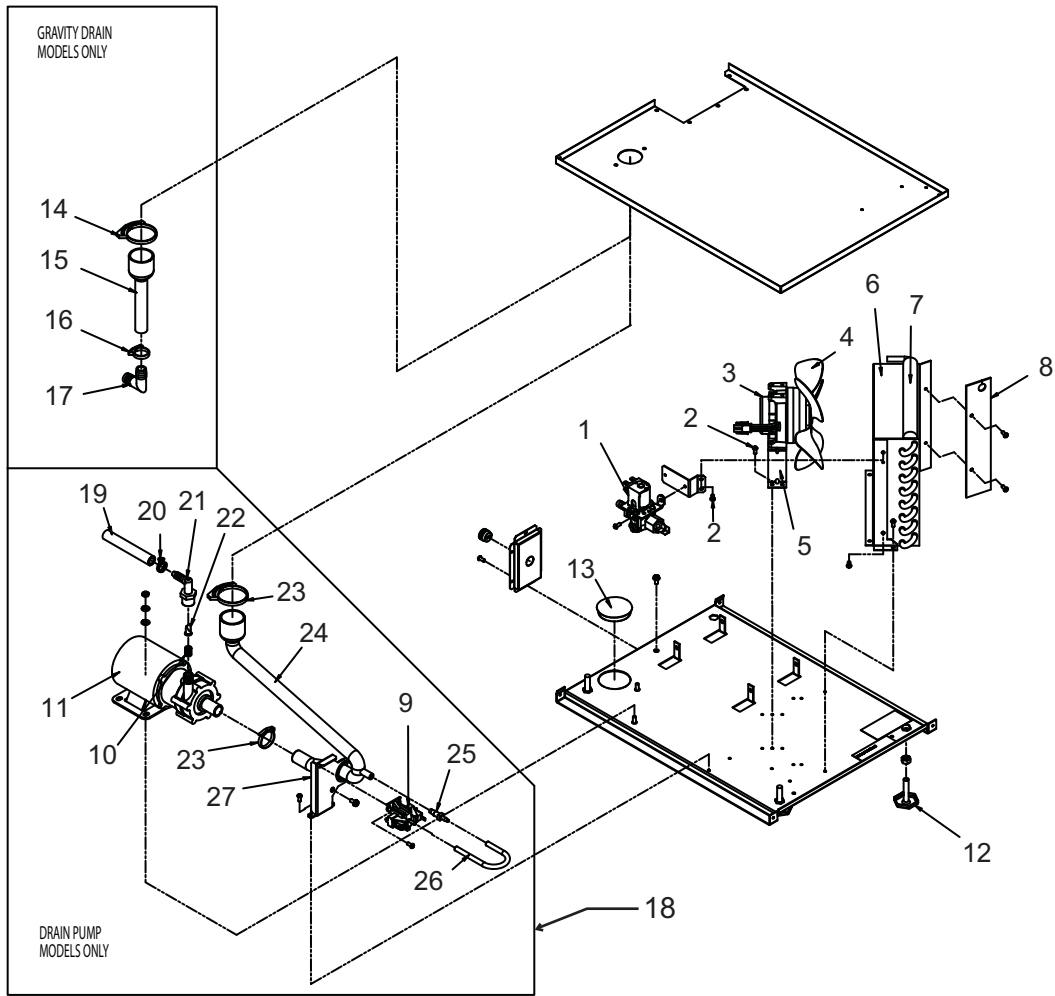
## Refrigeration System



Item Number	Part Number	Description
1	A39396-001	Suction line accumulator assy
2	<a href="#">02-4376-02</a>	Evaporator
3	<a href="#">18-8776-21</a>	Compressor
Compressor includes overload, relay and drier		
3a	<a href="#">18-8776-52</a>	Overload
3b	<a href="#">18-8776-51</a>	Relay
4	<a href="#">03-3821-01</a>	Clip
5	<a href="#">03-1407-08</a>	Washer
6	<a href="#">18-4700-28</a>	Grommet
7	<a href="#">18-8940-01</a>	Condenser
8	<a href="#">02-3490-01</a>	Drier
9	<a href="#">11-0562-21</a>	Hot gas valve
9a	<a href="#">11-0562-22</a>	HGV coil

# SCCG30 & SCCP30 Service Parts

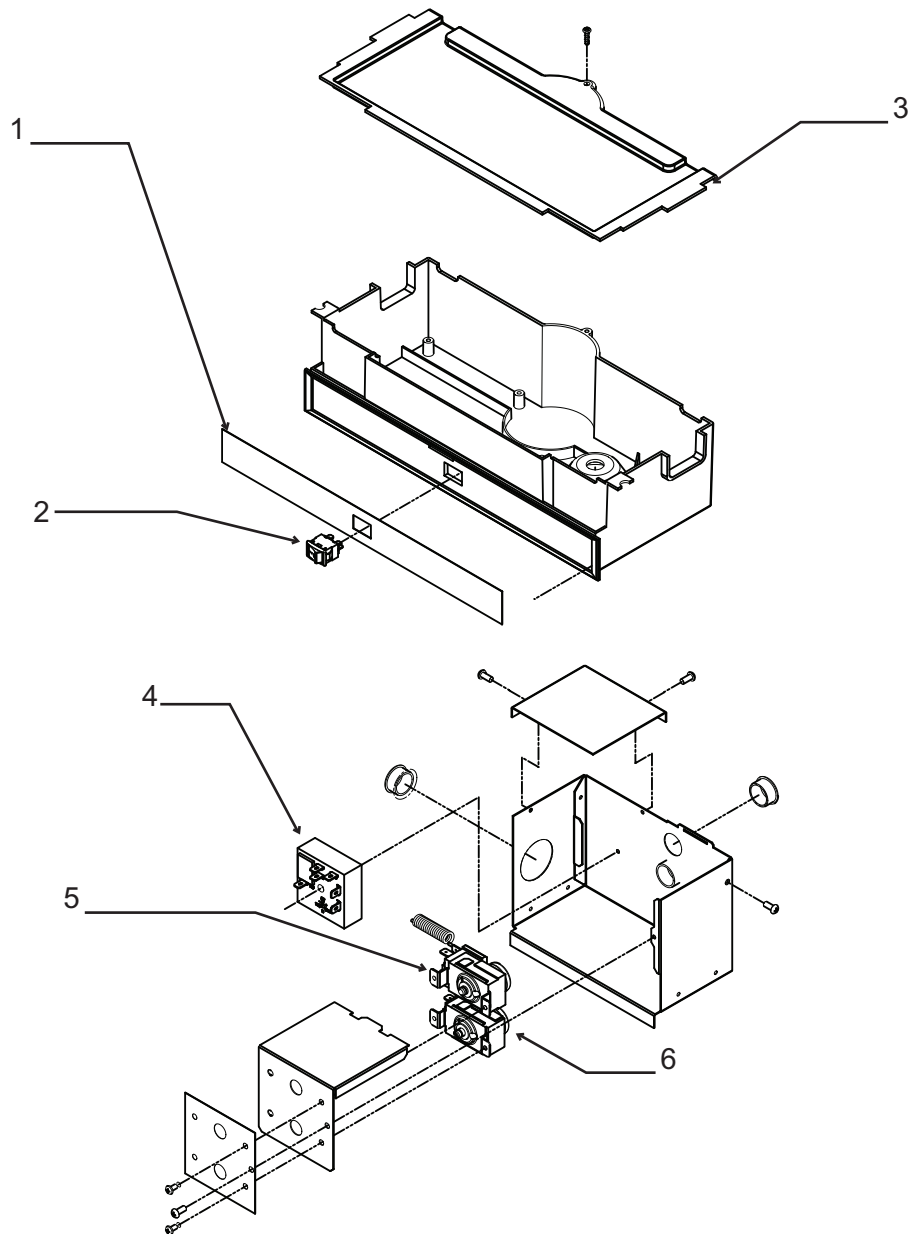
## Under Bin Parts



Item Number	Part Number	Description
1	<a href="#">12-2990-01</a>	Inlet water sol valve
2	<a href="#">03-1531-01</a>	Screw
3	<a href="#">12-3024-01</a>	Fan motor
4	<a href="#">02-4197-01</a>	Fan blade
5	A39556-001	Fan motor bracket
6	A39460-001	Fan shroud
7	<a href="#">13-0909-01</a>	Gasket, order 1 & cut to fit
8	<a href="#">02-4450-01</a>	Air baffle
9	<a href="#">11-0504-01</a>	Pressure switch
10	<a href="#">03-3904-01</a>	Spring
11	<a href="#">12-2503-21</a>	Pump & motor only
12	<a href="#">03-1608-01</a>	Leg leveler
13	<a href="#">02-1875-18</a>	Hole plug
14	<a href="#">02-2814-13</a>	Hose clamp
15	<a href="#">02-4412-01</a>	Drain hose
16	<a href="#">02-2814-08</a>	Hose clamp
17	<a href="#">16-0671-01</a>	Elbow
18	A39462-021	Pump kit
19	A37334-001	Discharge hose
20	<a href="#">02-0534-02</a>	Hose clamp
21	<a href="#">02-3522-01</a>	Elbow
22	<a href="#">02-3374-01</a>	Check valve
23	<a href="#">02-2814-13</a>	Hose clamp
24	<a href="#">02-4413-01</a>	Drain tube
25	<a href="#">02-3406-01</a>	Barbed connector
26	<a href="#">05-0591-01</a>	Switch hose
27	A39370-001	Switch bracket

# SCCG30 & SCCP30 Service Parts

## Control System



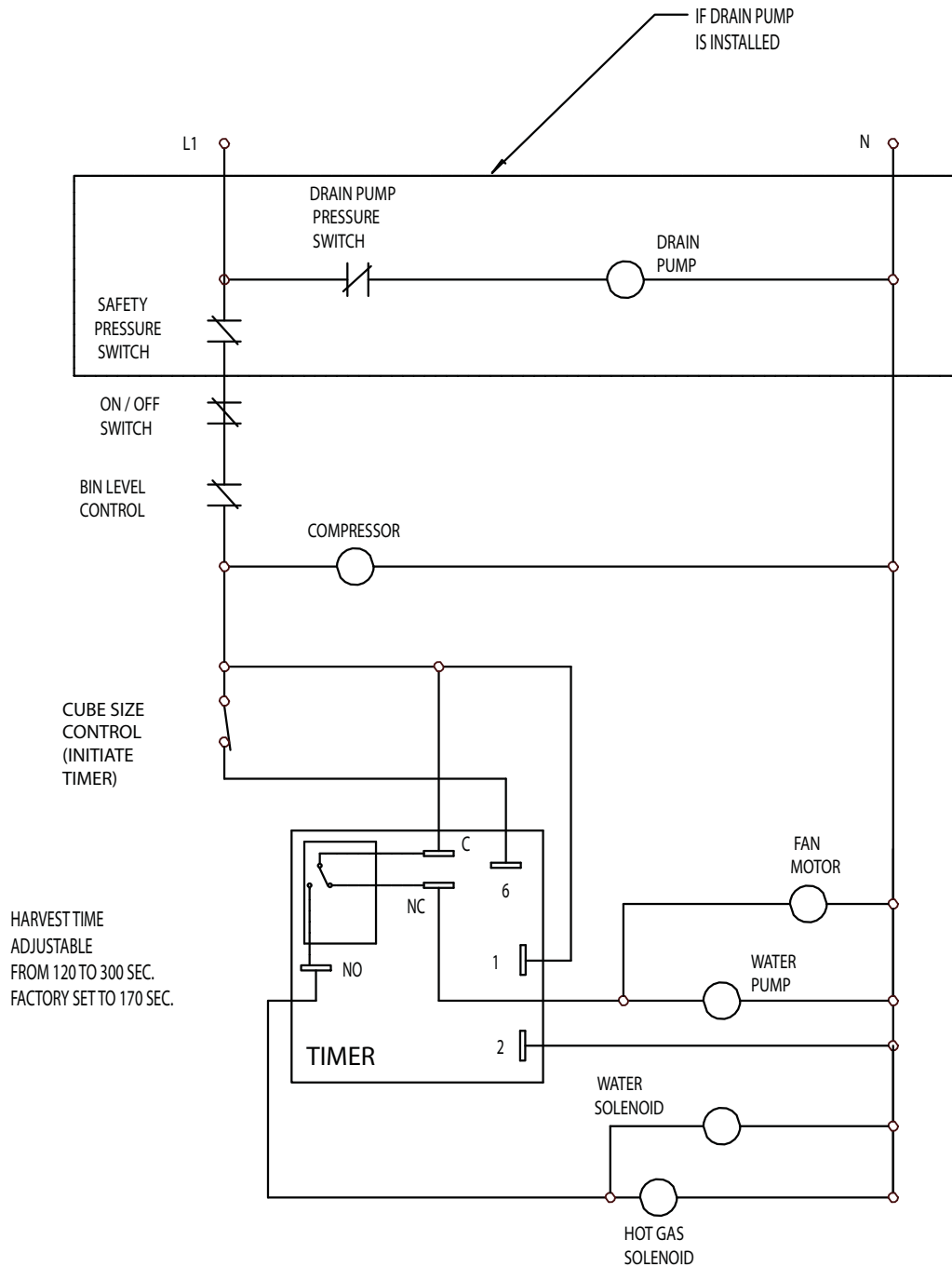
Item	Part	
Number	Number	Description
1	<a href="#">02-4436-01</a>	Graphic overlay
2	<a href="#">12-2991-01</a>	Power switch
3	<a href="#">02-4386-01</a>	Cover
4	<a href="#">12-2985-01</a>	Timer
5	<a href="#">11-0620-21</a>	Cube size thermostat
6	<a href="#">11-0617-21</a>	Bin thermostat

### Not Shown:

NS1	<a href="#">12-3005-02</a>	Hi voltage harness, lower
NS2	<a href="#">12-3005-01</a>	Hi voltage harness, upper
<b>Note: If replacing the lower harness always replace the upper one too.</b>		
NS3	<a href="#">12-1638-21</a>	Power cord

# SCCG30 & SCCP30 Service Parts

## Schematic Diagram

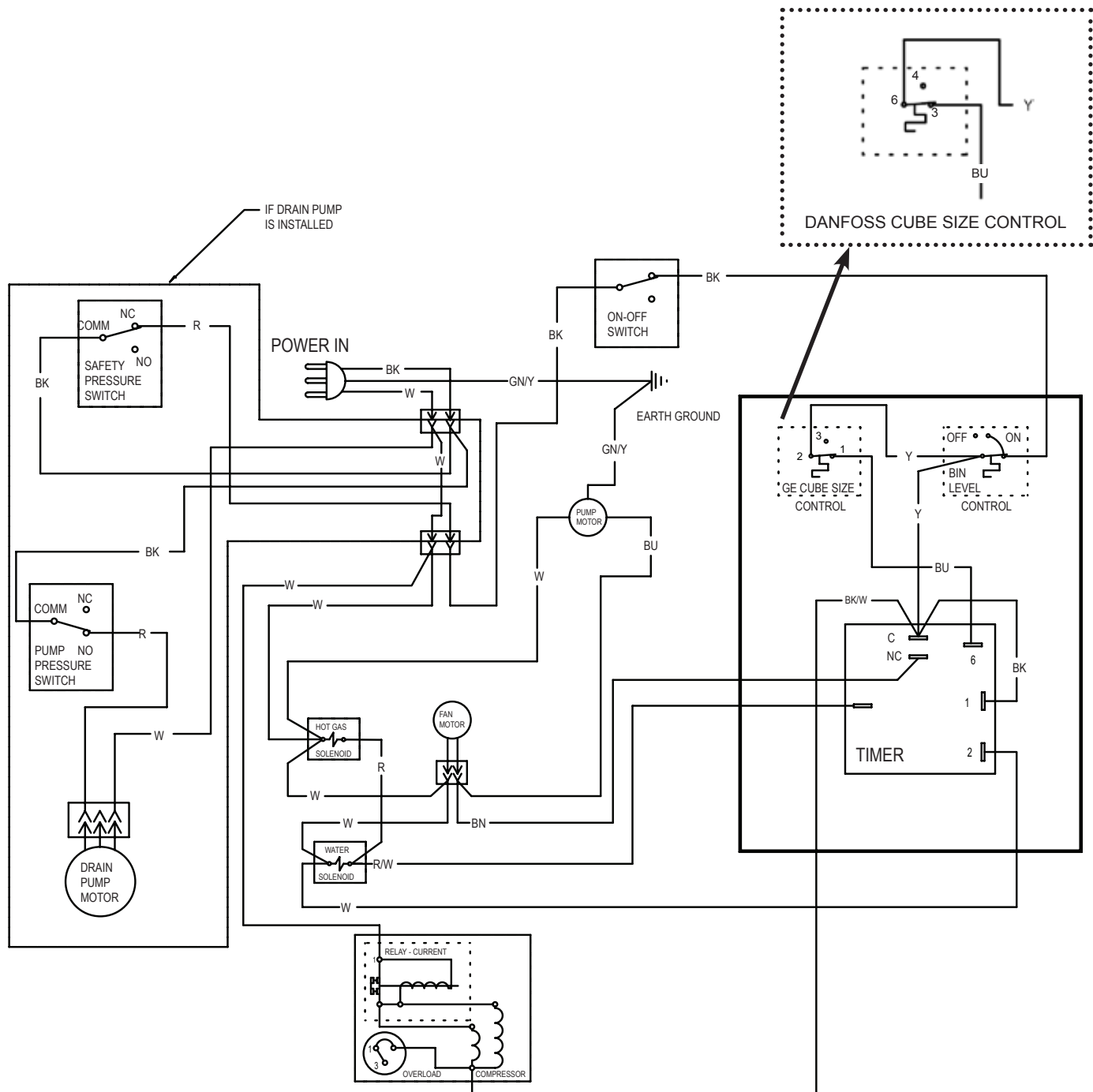


SWITCHES ON THIS UNIT  
SHOWN IN TIMED PORTION  
OF THE FREEZE CYCLE  
WITH DRAIN PUMP IN OPERATION



## SCCG30 & SCCP30 Service Parts

## Wiring Diagram



---

SCOTSMAN ICE SYSTEMS

775 Corporate Woods Parkway, Vernon Hills, IL 60061

800-533-6006

[www.scotsman-ice.com](http://www.scotsman-ice.com)

17-3264-02