

# SCE275 Service Parts

This is the service parts list for the SCE275. This product was manufactured in both 60 Hz and 50 Hz models. The model number is different for each voltage. 60 Hz are designated with a -1 or -32 at the end, for example: SCE275A-1A or SCE275A-32G. 50 Hz models use a -6 at the end, such as SCE275A-6A.

Electrical parts that belong to the different voltages are described as 115/60, 208-230/60 or 50 Hz.

Changes between the A and D series relate to the compressor's starting components.

The E series changes were to the electrical system of the 50 Hz model.

The F series water cooled models began the use of a different water cooled condenser.

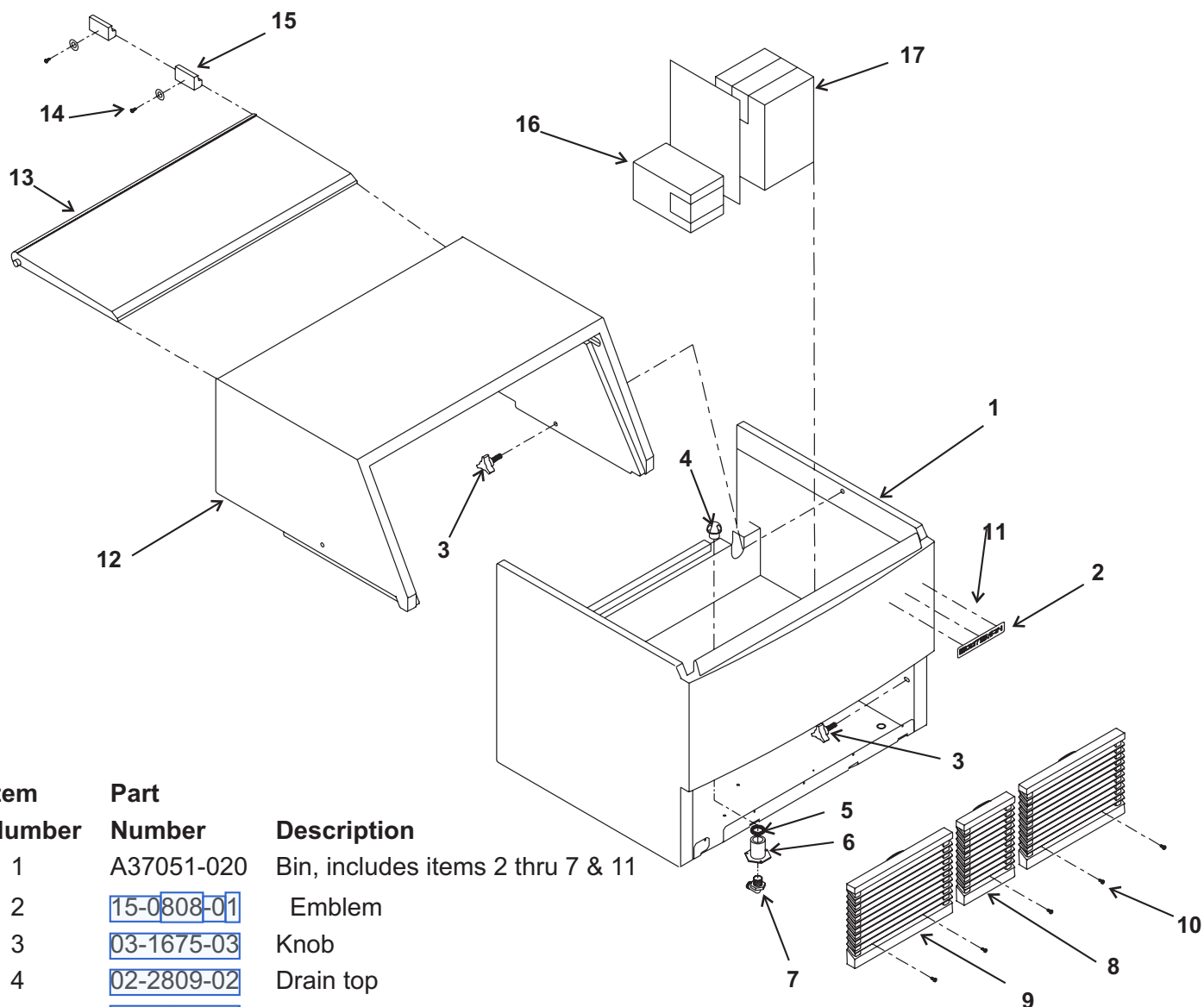
The G series moved the controller to the left side of the chassis.

## Table of Contents

Cabinet . . . . .	Page 2
Air Cooled . . . . .	Page 3
Water Cooled . . . . .	Page 4
Refrigeration Components . . . . .	Page 5
Water System . . . . .	Page 6
Compressor, Controller, Water Valve . . . . .	Page 7
Electrical Box . . . . .	Page 8
Wire Harnesses . . . . .	Page 9
Wiring Diagram, A series . . . . .	Page 10
Schematic Diagram . . . . .	Page 11
60 Hz Wiring Diagram: D, E, F and G Series . . . . .	Page 12
50 Hz Wiring Diagram: - 6E, -6F, and -6G . . . . .	Page 13

# SCE275 Service Parts

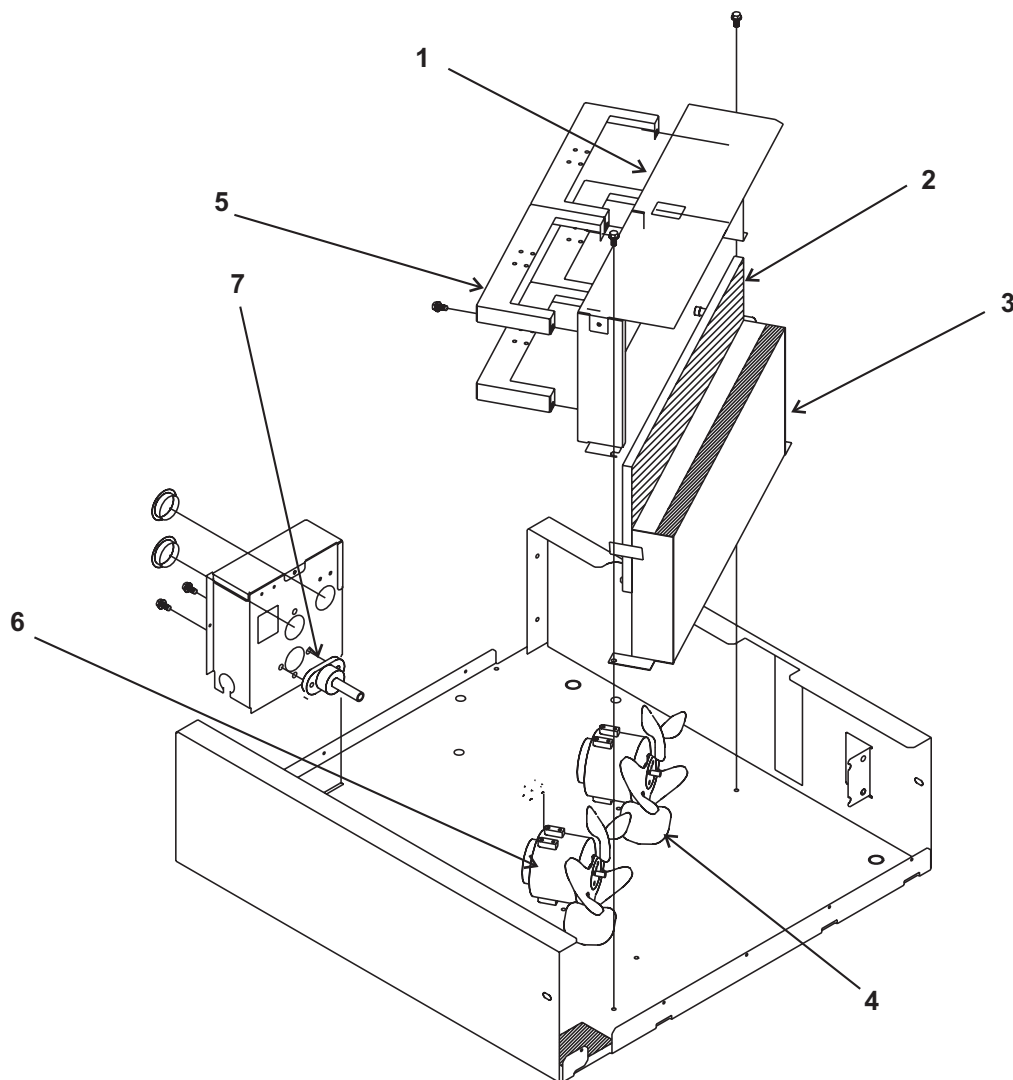
## Cabinet



Item Number	Part Number	Description
1	A37051-020	Bin, includes items 2 thru 7 & 11
2	<a href="#">15-0808-01</a>	Emblem
3	<a href="#">03-1675-03</a>	Knob
4	<a href="#">02-2809-02</a>	Drain top
5	<a href="#">02-4193-01</a>	Flat washer
6	<a href="#">02-3108-01</a>	Drain fitting
7	<a href="#">16-0822-01</a>	Elbow
8	<a href="#">02-3458-31</a>	Center grill
9	<a href="#">02-3153-31</a>	Grill
10	<a href="#">03-1638-03</a>	Screw
11	<a href="#">03-1562-01</a>	Speed clip
12	A37050-021	Hood, includes items 3, 14, and 15
13	<a href="#">02-3439-31</a>	Door
14	<a href="#">03-1419-22</a>	Screw
15	<a href="#">19-0629-02</a>	Door stop
16	KLP2	Leg kit
17	<a href="#">02-3253-01</a>	Scoop

# SCE275 Service Parts

## Air Cooled

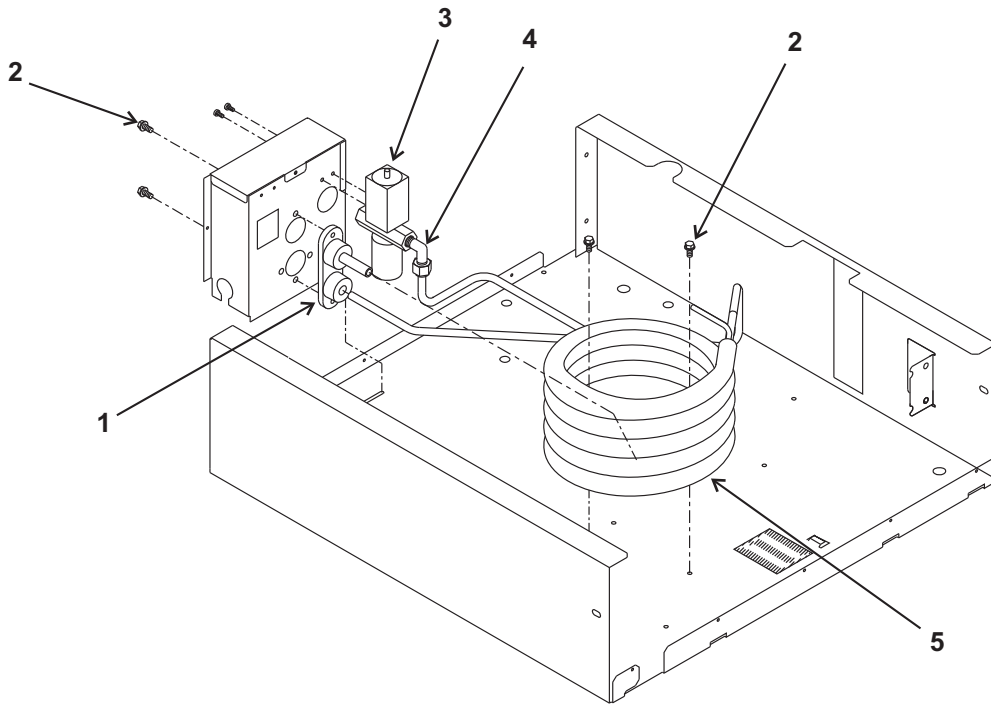


Item Number	Part Number	Description
1	A36742-001	Fan shroud
2	<a href="#">02-3193-01</a>	Air filter
3	<a href="#">18-8782-01</a>	Condenser
4	<a href="#">18-8773-01</a>	Fan blade
5	A37320-001	Fan motor bracket
6	<a href="#">12-1681-23</a>	Fan motor, 115/60 Hz
	<a href="#">12-1681-04</a>	Fan motor, 50 Hz
	<a href="#">12-1681-04</a>	Fan motor, 208-230/60
7	<a href="#">02-3692-23</a>	Drain fitting



# SCE275 Service Parts

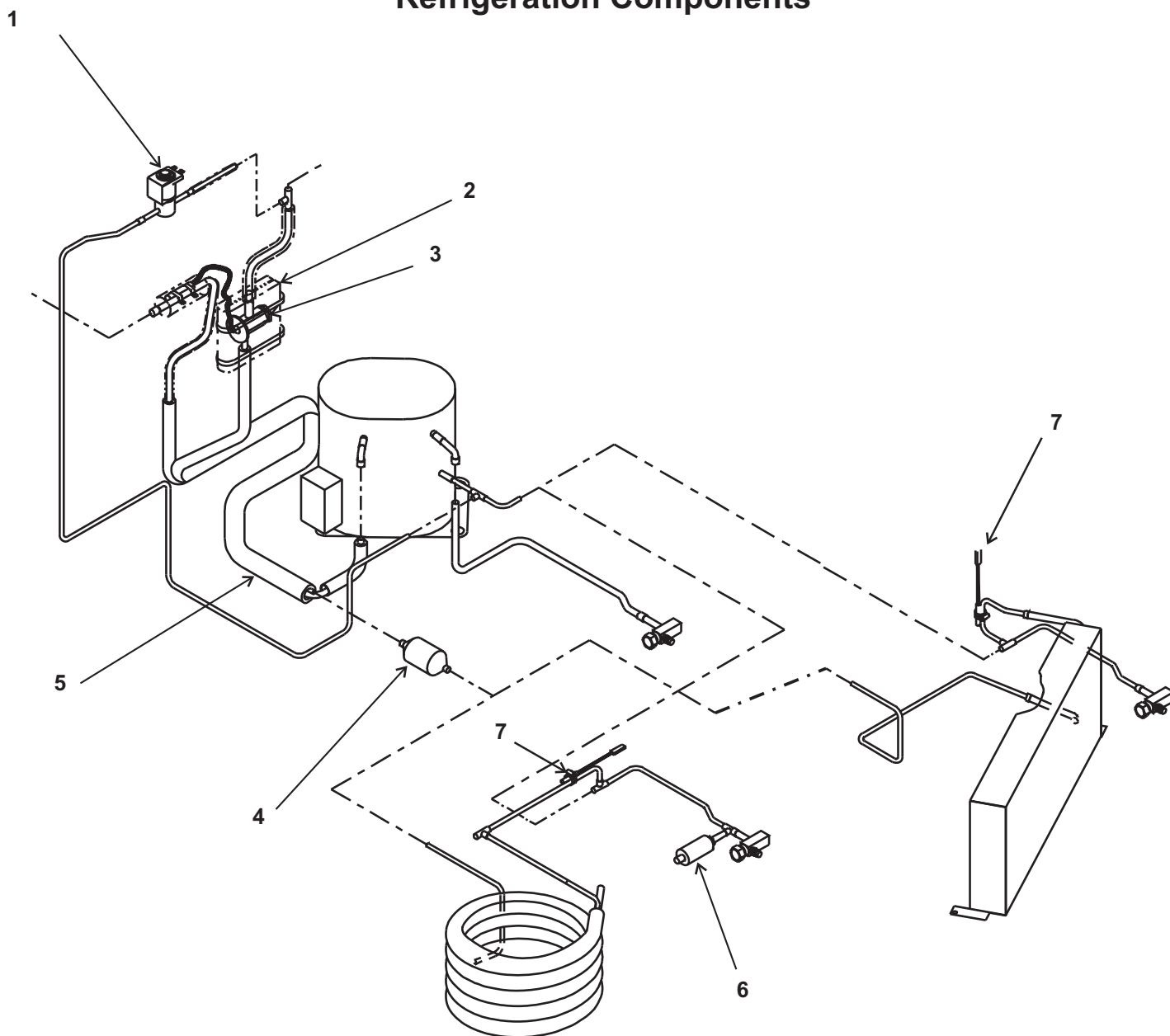
## Water Cooled



Item	Part	
Number	Number	Description
1	A31878-001	Drain fitting
2	<a href="#">03-1645-02</a>	Screw
3	<a href="#">11-0608-21</a>	Water regulating valve
4	<a href="#">16-0401-00</a>	Elbow
5	<a href="#">18-8803-25</a>	A - E series water cooled condenser
	<a href="#">18-8871-01</a>	F & higher series water cooled condenser

# SCE275 Service Parts

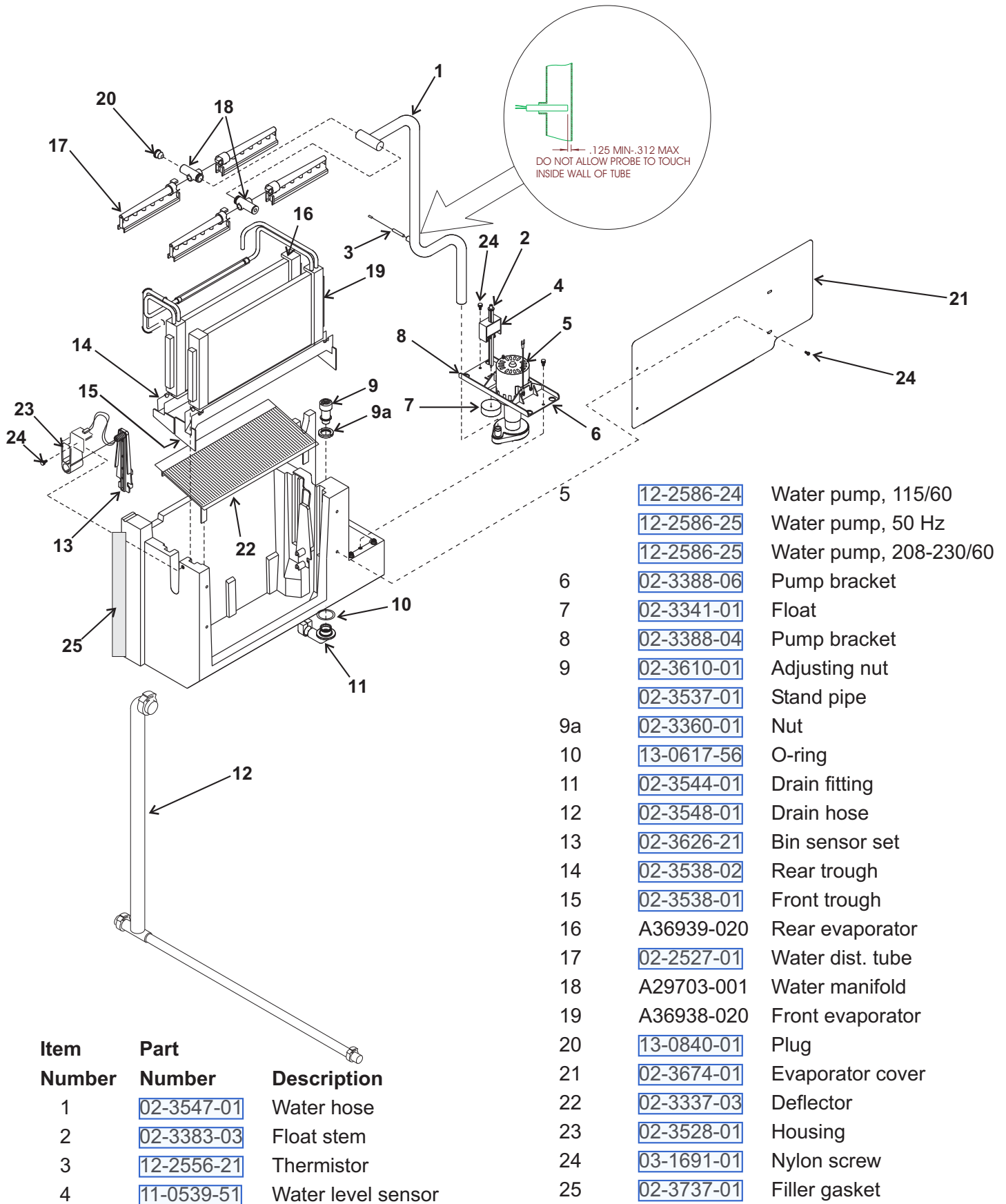
## Refrigeration Components



Item Number	Part Number	Description
1	<a href="#">12-2471-01</a>	Hot gas valve w/coil
	<a href="#">12-2719-23</a>	Coil for hot gas valve
2	<a href="#">02-3792-02</a>	Insulation
3	<a href="#">16-1009-22</a>	TXV
4	<a href="#">02-3319-01</a>	Drier
5	A36637-001	Suction line
6	<a href="#">11-0501-21</a>	Hi pressure cut out (WC)
	<a href="#">11-0501-05</a>	Hi pressure cut out (AC)
7	<a href="#">12-2556-21</a>	Thermistor

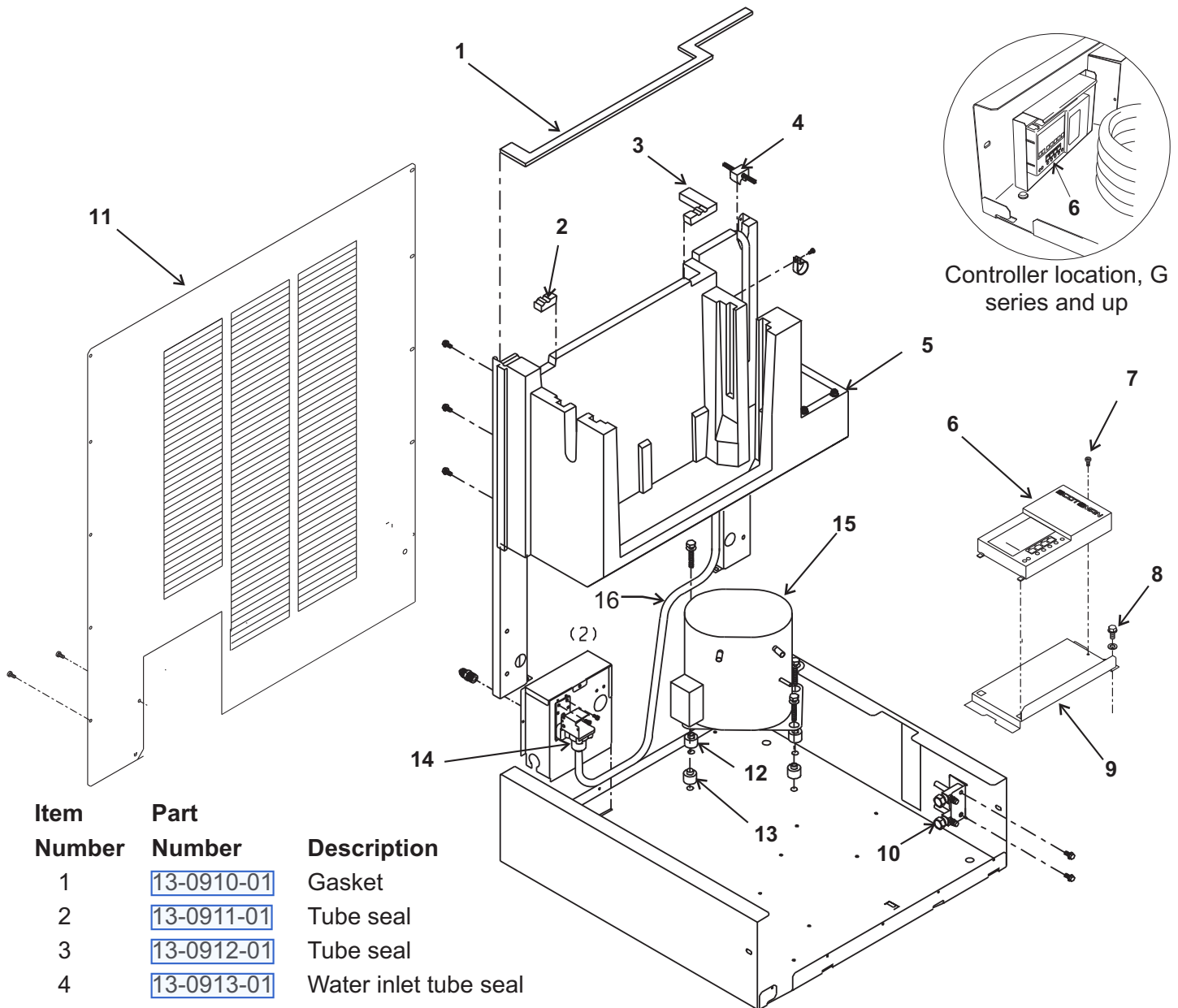
# SCE275 Service Parts

## Water System



# SCE275 Service Parts

## Compressor, Controller, Water Valve

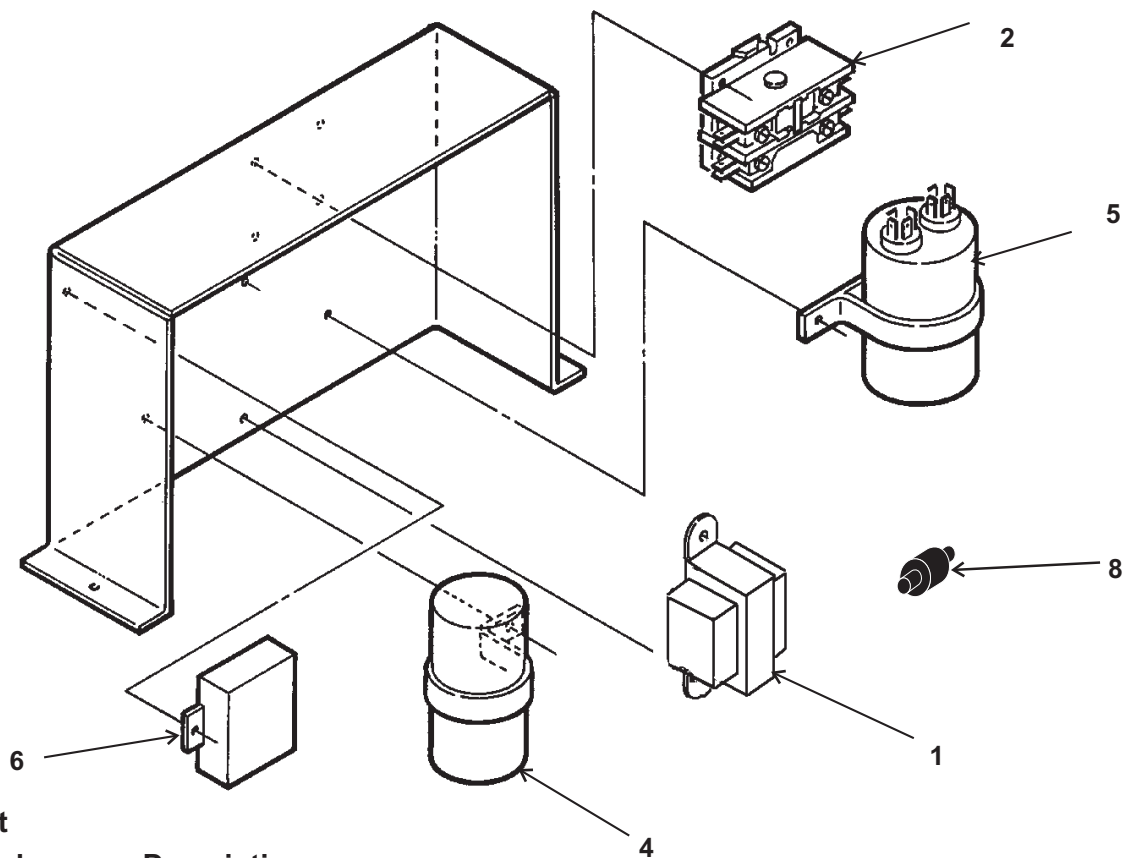


Controller location, G series and up

Item Number	Part Number	Description			
1	<a href="#">13-0910-01</a>	Gasket			
2	<a href="#">13-0911-01</a>	Tube seal			
3	<a href="#">13-0912-01</a>	Tube seal			
4	<a href="#">13-0913-01</a>	Water inlet tube seal			
5	A36784-001	Evaporator housing			
6	<a href="#">12-2838-24</a>	Controller	13	<a href="#">18-0108-41</a>	Mounting sleeve
7	<a href="#">03-1638-03</a>	Screw		<a href="#">18-2300-27</a>	Grommet
8	<a href="#">03-1645-02</a>	Screw	14	<a href="#">12-2548-01</a>	Inlet water valve
9	obsolete	Bracket	15	<a href="#">18-8774-21</a>	Compressor, 115/60
10	<a href="#">16-0832-21</a>	Service valve		<a href="#">18-8774-23</a>	Overload for 115/60
10a	<a href="#">16-0832-03</a>	Port cap		<a href="#">18-8774-26</a>	Compressor, 230/50/1
10b	<a href="#">16-0832-02</a>	Stem cap		<a href="#">18-8774-27</a>	Overload for 50 Hz
11	A36608-001	Back panel		<a href="#">18-8774-22</a>	Compressor 208-230/60
12	<a href="#">03-1677-01</a>	Screw - inserts from below		<a href="#">18-8774-28</a>	Overload for 208-230/60
	<a href="#">03-1406-01</a>	Hex nut	16	<a href="#">02-3461-01</a>	Inlet water hose
	<a href="#">03-1407-07</a>	Washer			

# SCE275 Service Parts

## Electrical Box



Item Number	Part Number	Description
1	<a href="#">12-2836-01</a>	Transformer, 115/60
	<a href="#">12-2836-02</a>	Transformer, 230/60 or 50 Hz
2.	<a href="#">12-2469-01</a>	Contactor
3	<a href="#">12-2563-01</a>	Control box harness
4	<a href="#">18-1901-55</a>	Start capacitor, 115/60 Hz
	<a href="#">18-1901-56</a>	Start capacitor, 50 Hz
5	<a href="#">18-1902-45</a>	Run capacitor, 115/60 Hz
	<a href="#">18-1902-68</a>	Run capacitor, 50 Hz
	<a href="#">18-1902-68</a>	Run capacitor 208-230/60
6	<a href="#">18-1903-52</a>	Potential Relay, 115/60 Hz
	<a href="#">18-1903-53</a>	Potential Relay, 50 Hz
7	<a href="#">12-1638-14</a>	Power cord, 115/60 Hz
	<a href="#">12-1638-18</a>	Power cord, 208-230 60 or 50 Hz
8.	<a href="#">18-8835-01</a>	PTCR
9.	A36855-001	Cover for control box



# SCE275 Service Parts

## Wire Harnesses

Wire Harnesses are NOT ILLUSTRATED, select by model number and description

A through F series models have single harnesses

G series 60 Hz have single harnesses

G series 50 Hz have split harnesses

Part Number	Description
-------------	-------------

<a href="#">12-2620-01</a>	Main wire harness WC for A - F series
----------------------------	---------------------------------------

<a href="#">12-2619-01</a>	Main wire harness AC for A - F series
----------------------------	---------------------------------------

<a href="#">12-2900-01</a>	Main wire harness AC for G series 60 Hz
----------------------------	---

<a href="#">12-2901-01</a>	Main wire harness WC for G series 60 Hz
----------------------------	---

<a href="#">12-2894-01</a>	24 volt wire harness, AC for G series 50 Hz
----------------------------	---

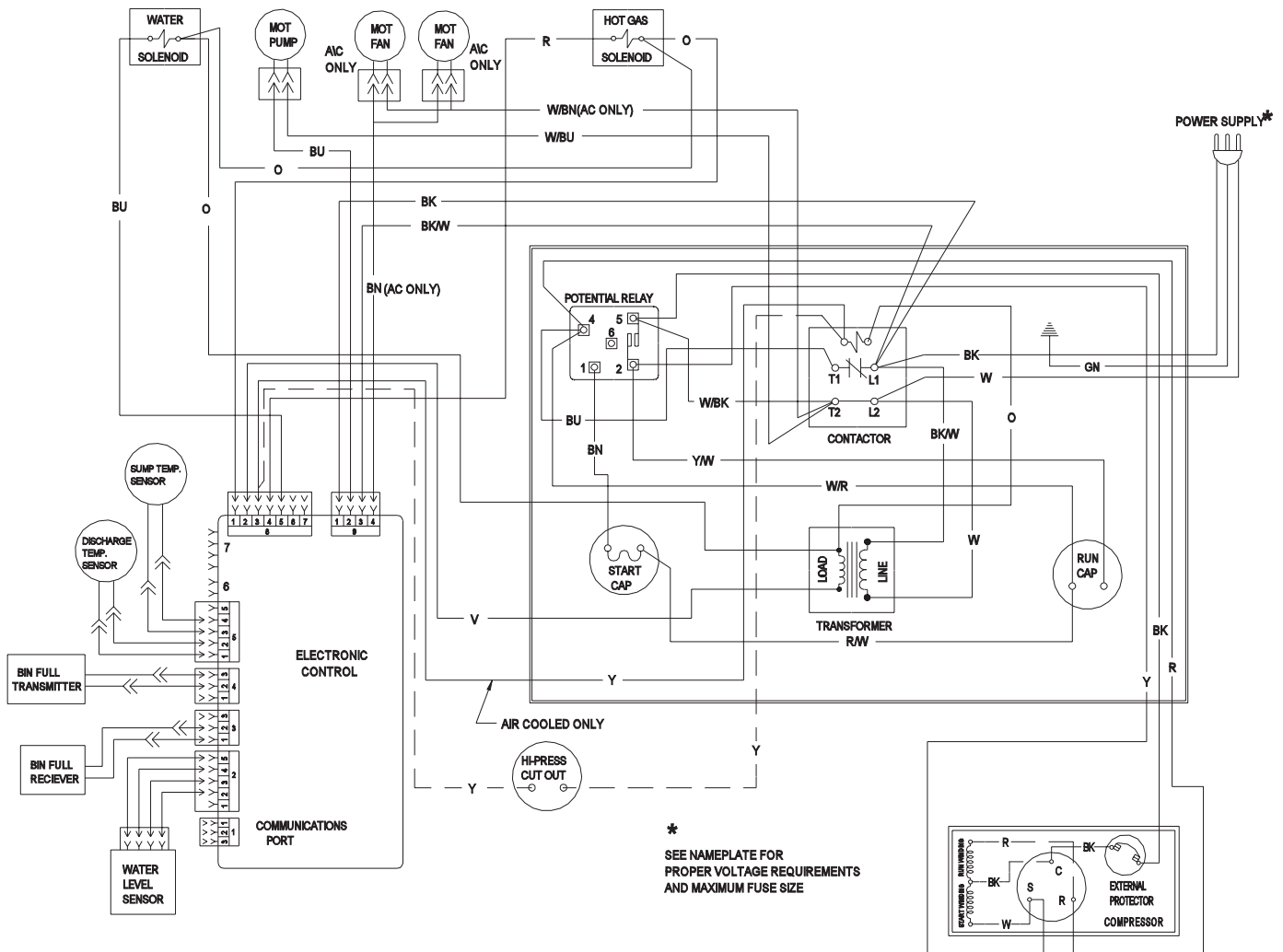
<a href="#">12-2893-01</a>	Pump wire harness, WC for G series 50 Hz
----------------------------	--

<a href="#">12-2895-01</a>	Pump and fan wire harness, AC for G series 50 Hz
----------------------------	--

<a href="#">12-2892-01</a>	24 volt wire harness, WC for G series 50 Hz
----------------------------	---

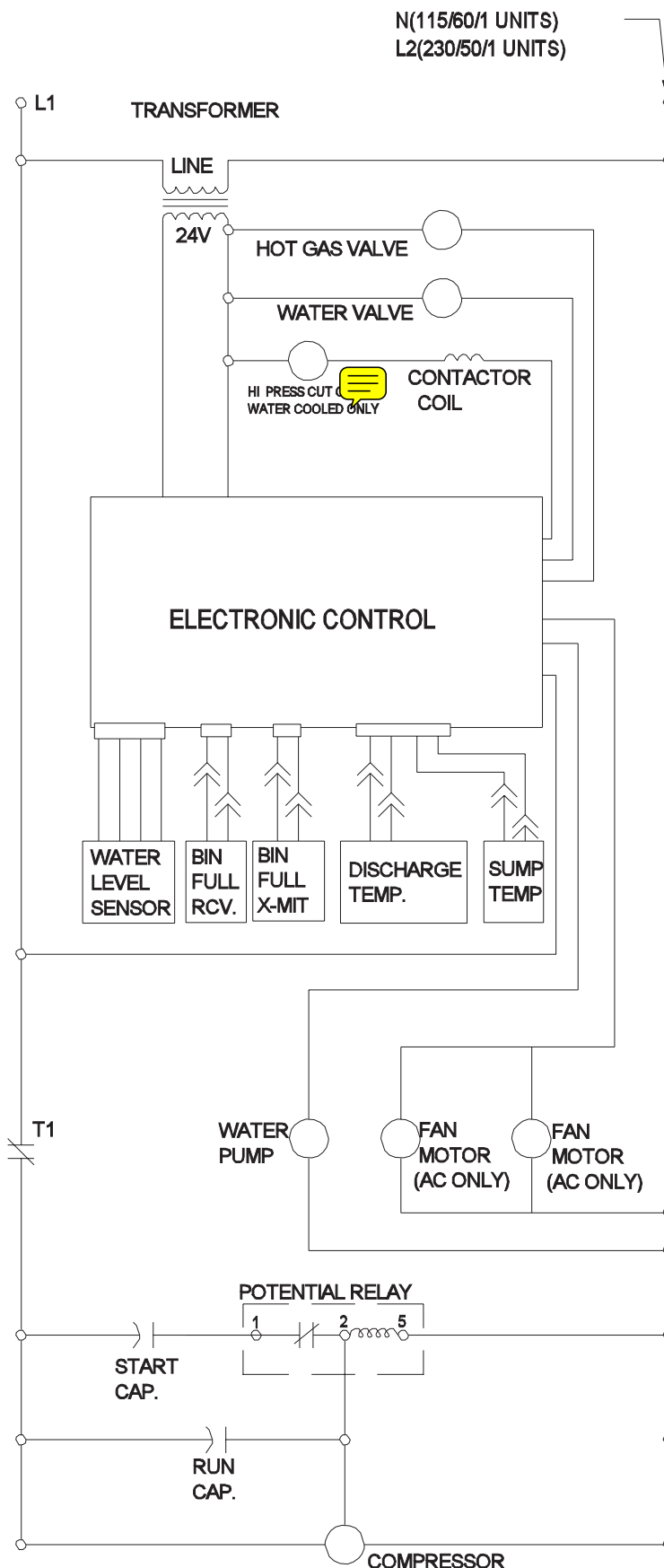
# SCE275 Service Parts

## Wiring Diagram, A series



# SCE275 Service Parts

## Schematic Diagram



## 60 Hz Wiring Diagram: D, E, F, G and H Series



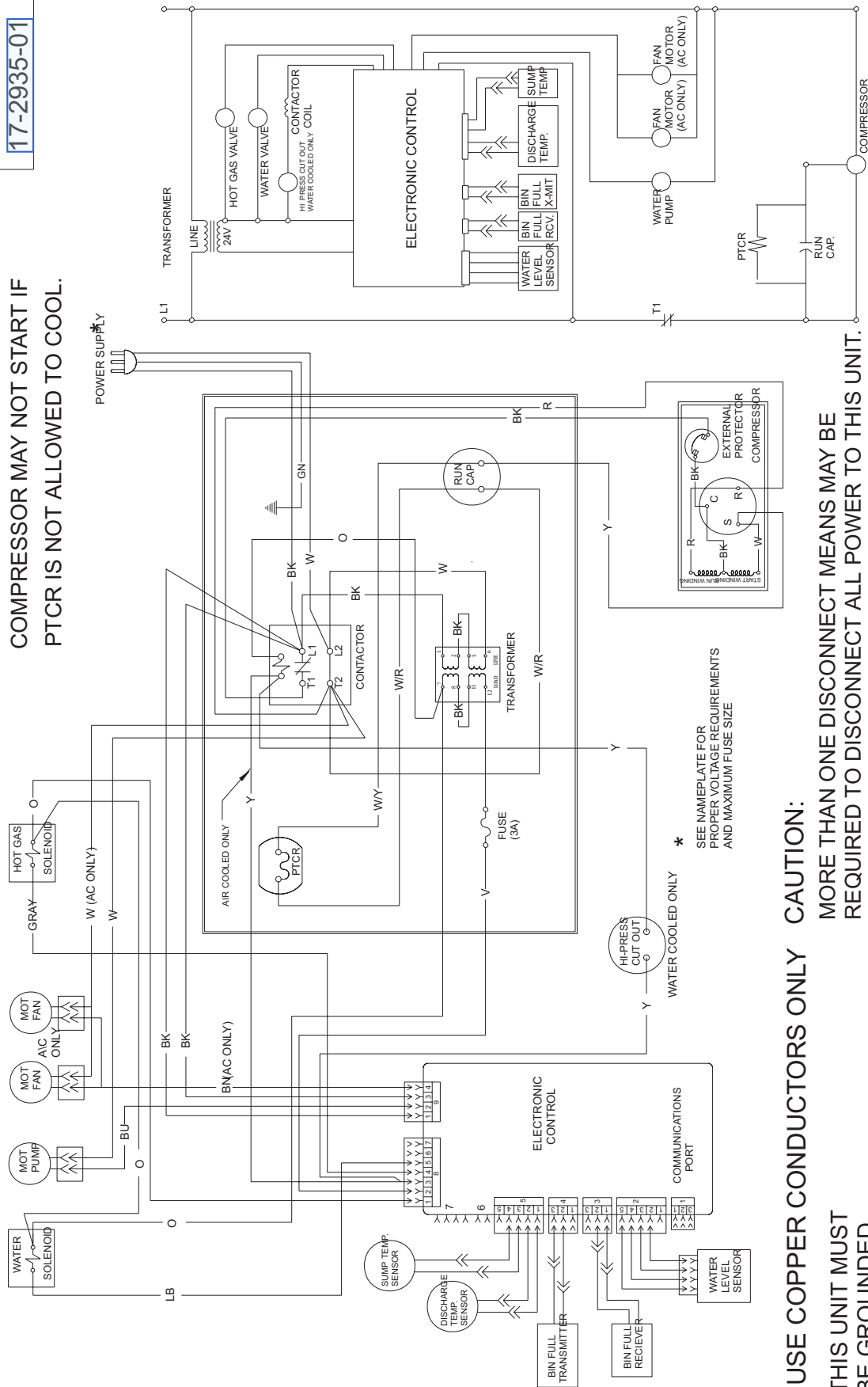
**CAUTION:**  
MORE THAN ONE DISCONNECT MEANS MAY BE  
REQUIRED TO DISCONNECT ALL POWER TO THIS UNIT.

# SCE275 Service Parts

## 50 Hz Wiring Diagram: - 6E, -6F, and -6G

17-2935-01

**CAUTION: PTCR WILL BE HOT.**  
**COMPRESSOR MAY NOT START IF**  
**PTCR IS NOT ALLOWED TO COOL.**



---

# SERVICE BULLETIN

---

## Subject: SCE275 Model Series Change

The SCE275 is now being manufactured as a G series. G series and higher SCE275s have their AutoIQ controller on the left side wall of the chassis, instead of the right side chassis floor. The new location provides improved protection from water and debris.

Although the controller's buttons and lights are somewhat out of sight in the new location, they can be easily seen by flashlight.

Because of the controller move, the wire harnesses have also changed.

[12-2900-01](#) Main wire harness AC for G series 60 Hz

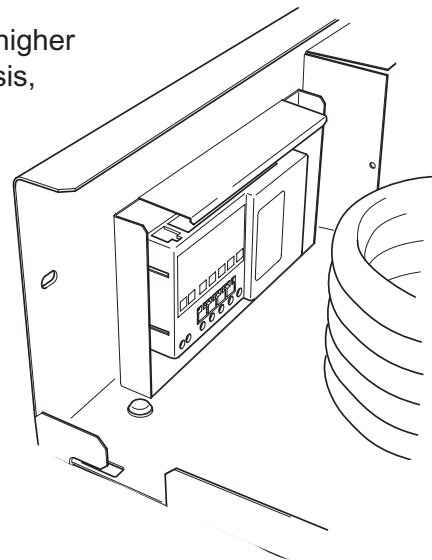
[12-2901-01](#) Main wire harness WC for G series 60 Hz

[12-2894-01](#) 24 volt wire harness, AC for G series 50 Hz

[12-2895-01](#) Pump wire harness, WC for G series 50 Hz

[12-2895-01](#) Pump and fan wire harness, AC for G series 50 Hz

[12-2892-01](#) 24 volt wire harness, WC for G series 50 Hz



*New Location for Controller*