

Service Parts for models UF424 and UN324

This is the illustrated parts list for Scotsman ice maker models UF424 and UF324.

They were manufactured as either air or water cooled models, plus the air cooled models were made in 2 voltages. Please confirm the complete model number before ordering a part.

Complete models are:

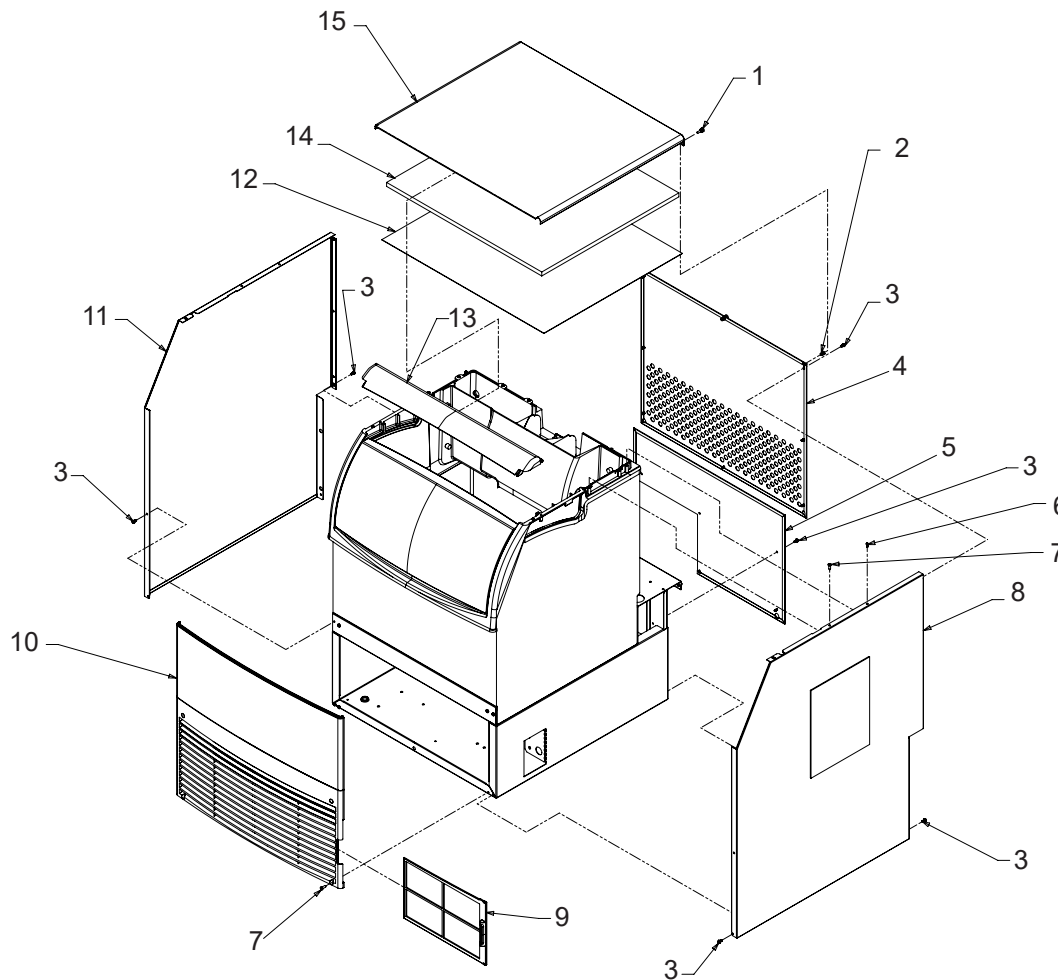
- UF424A-1A, flaked ice, air cooled 115 volt, 60 Hz
- UN324A-6A, nugget ice, air cooled, 115 volt, 60 Hz
- UF424W-1A, flaked ice, water cooled, 115 volt, 60 Hz
- UN324W-1A, nugget ice, water cooled, 115 volt, 60 Hz
- UF424A-6A, flaked ice, air cooled, 230 volt 50 Hz
- UN324A-6A, nugget ice, air cooled, 230 volt 50 Hz

Contents

Outer Cabinet	Page 2
Inner Cabinet, Water Tubing and Reservoir	Page 3
Refrigeration and Water Cooled Condensing	Page 4
Drains and Ice Making Components	Page 5
Base Top and Air Cooled Condensing.	Page 6
Auger, Water Seal, Gear Reducer, Bearings.	Page 7
Control Box	Page 8
Wiring Diagram	Page 9

Model UF424 and UN324 Service Parts

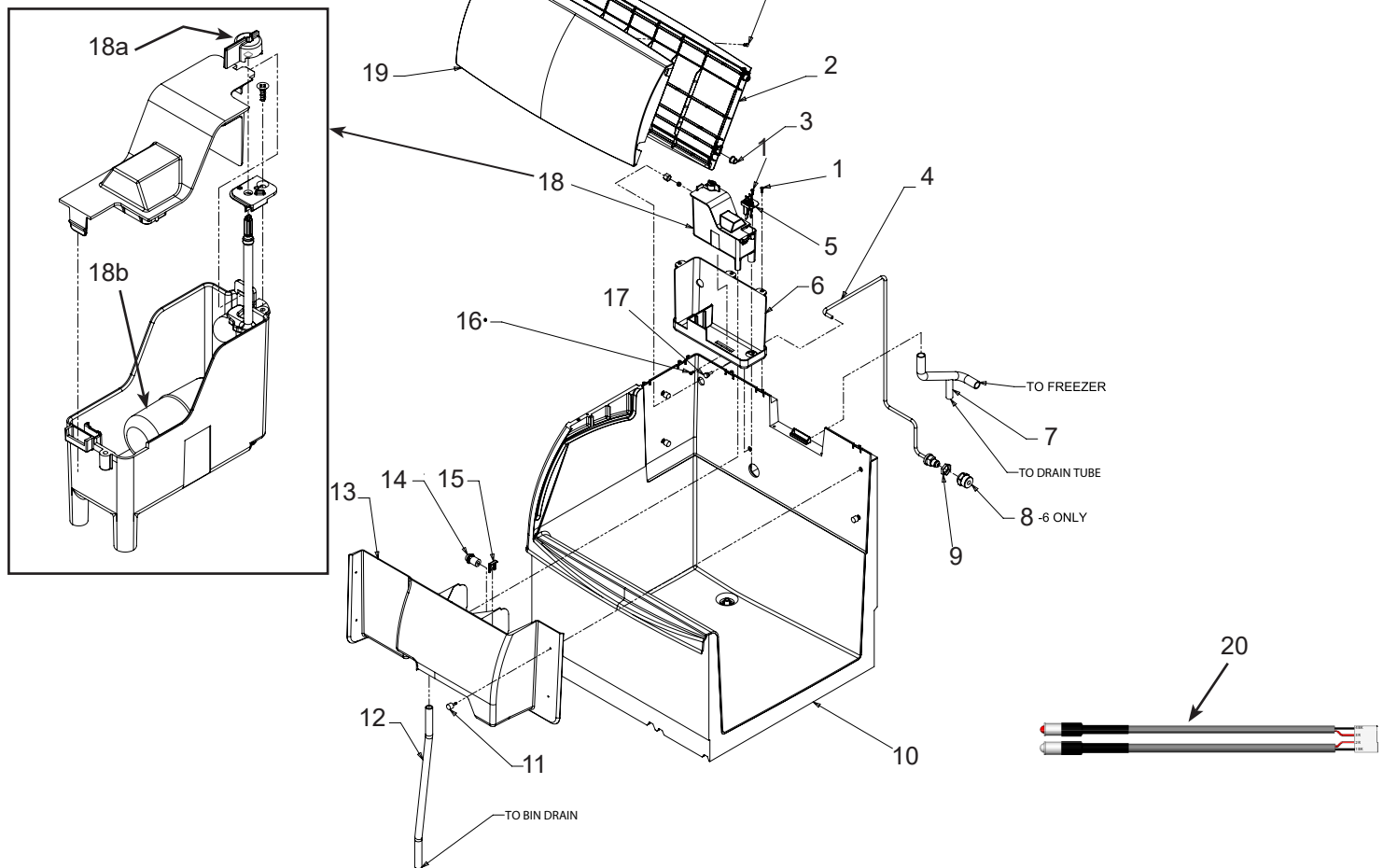
Outer Cabinet



Item	Part Number	Description
1	03-0727-05	Thumbscrew
2	03-1642-08	Hex insert
3	03-3943-01	Screw, #8
4	A40584-021	Back panel
5	A40585-001	Lower back panel
6	03-3836-03	Screw
7	03-1404-12	Screw
8	A40589-001	Right side panel
9	02-4952-01	Air filter
10	02-4951-01	Louvered grill
11	A40589-002	Left side panel
12	02-4962-01	Inner top panel
13	02-4948-01	Top frame
14	02-4963-01	Insulation
15	A40593-021	Top panel

Model UF424 and UN324 Service Parts

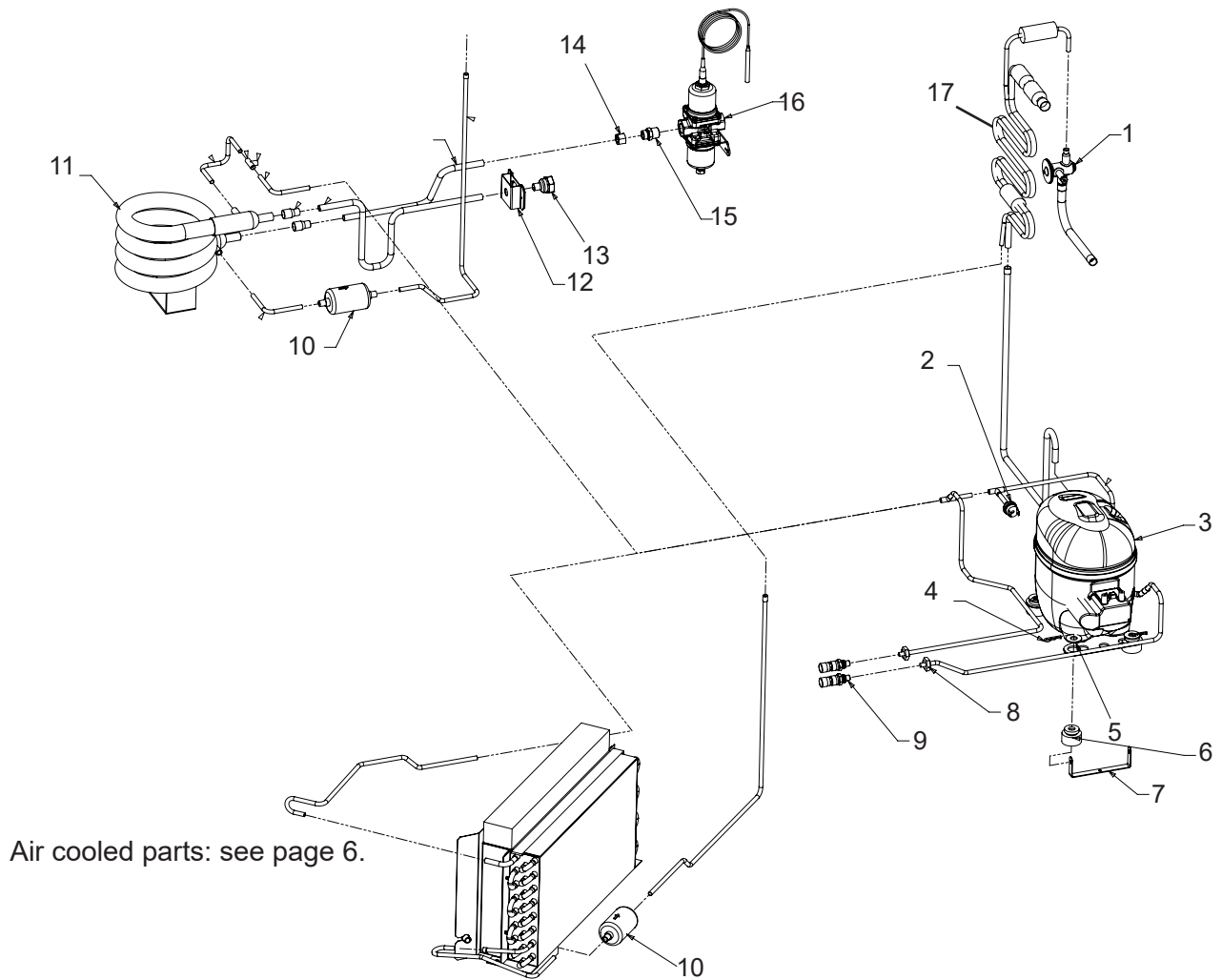
Inner Cabinet, Water Tubing and Reservoir



Item	Part Number	Description	Item	Part Number	Description
1	03-3870-01	Screw	18	A40664-001	Reservoir
2	no number	Inner door, see item 19	18a	02-4955-01	Knob
3	03-3941-01	Bushing	18b	02-2217-02	Float valve only, part of item 18
4	A40665-001	Water inlet tube assembly	19	A40908-021	Door assembly, includes items 1
5	A40666-001	Water sensor	and 2		
6	02-4953-01	Reservoir bracket	20	12-3128-01	Bin sensors with wire harness
7	02-4961-01	Evap water inlet tubing			
8	16-1150-01	Water inlet, 50 Hz only			
9	03-1394-01	Pal nut			
10	A40668-001	Foamed bin			
11	03-3892-01	Thumb screw			
12	02-4997-01	Overflow tube			
13	02-4949-01	Compartment cover			
14	13-0964-01	Bin sensor grommet			
15	02-4381-03	Retaining clip			
16	03-3836-04	Screw			
17	03-0727-05	Screw			

Model UF424 and UN324 Service Parts

Refrigeration and Water Cooled Condensing

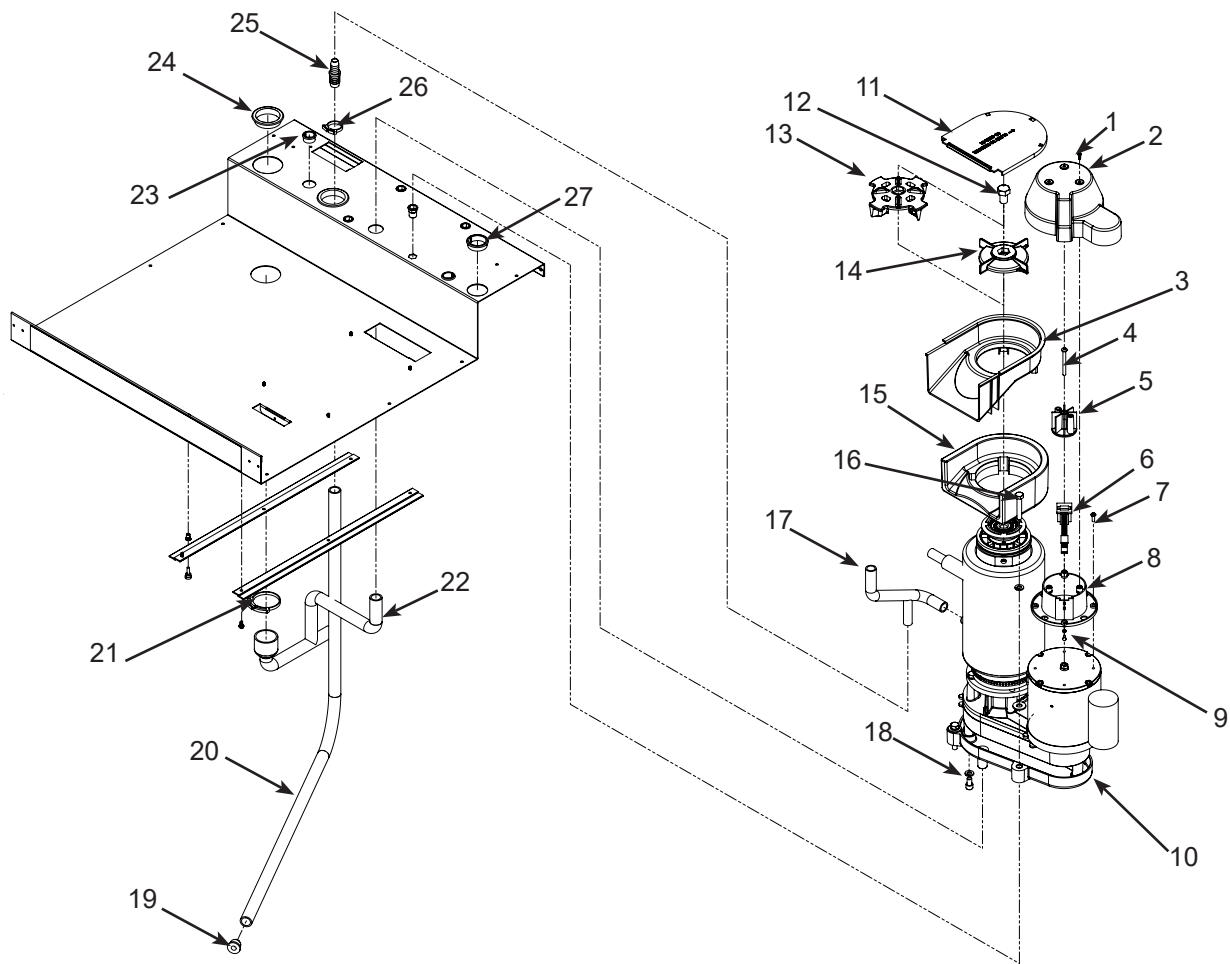


Air cooled parts: see page 6.

Item	Part Number	Description	Item	Part Number	Description
1	16-1214-02	Thermostatic expansion valve	11	18-8869-01	Water cooled condenser
	19-0599-06	Insulation for TXV	12	A39550-002	Drain bracket
2	11-0501-24	Hi pressure cut out (260 PSIG)	13	16-1154-02	Condenser drain fitting
3	18-8979-21	Compressor, 115 volt, 60 Hz*	14	16-1217-01	Nut
	18-8979-26	Compressor, 230 volt, 50 Hz*	15	16-1215-01	Fitting
3a	18-8979-41	Overload for 115 volt, 60 Hz	16	11-0608-02	Water regulating valve
	18-8979-51	Overload for 230 volt, 50 Hz	17	A40600-001	Heat exchanger
4	03-3821-01	Clip	* Compressor kits include starting components.		
5	03-1407-08	Washer			
6	18-4700-28	Grommet			
7	A40002-001	Comp mounting bracket			
8	03-3905-01	Jam nut			
9	16-1138-01	Valve body			
	16-1139-01	Valve core			
	16-1140-01	Valve cap			
10	02-3319-01	Dryer			

Model UF424 and UN324 Service Parts

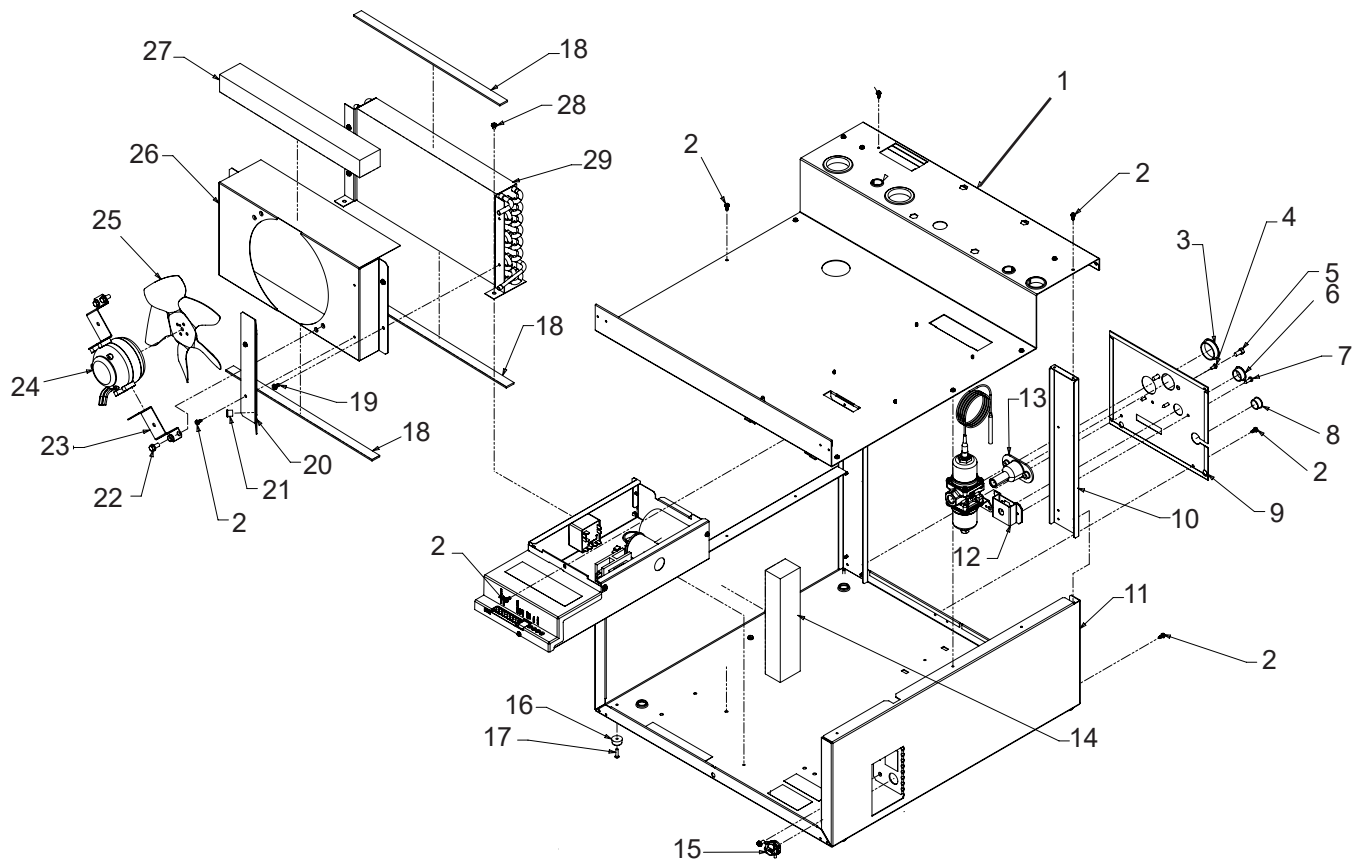
Drains and Ice Making Components



Item	Part Number	Description	Item	Part Number	Description
1	03-3836-04	Screw	18	03-1544-09	Screw, socket head
2	02-4797-01	Motor cover	19	13-0840-01	Drain plug
3	02-4760-01	Chute	20	02-4954-01	Drain tube
4	03-1403-70	Bolt*	21	02-2814-13	Hose clamp
5	02-4791-02	Magnet holder	22	02-4954-01	Bin drain tube
6	12-3089-02	Rotation sensor with harness	23	12-1213-10	Snap bushing
7	03-1403-29	Screw	24	12-1213-15	Snap bushing
8	02-4791-01	Sensor holder	25	16-1213-02	Barbed adapter
9	03-1410-01	Lockwasher	26	02-2814-09	Hose clamp
10	03-3889-02	Screw	27	12-1213-20	Snap bushing
11	02-4804-01	Drain pan	28	02-4873-01	Wrench to hold motor shaft
12	02-4802-01	Ice chute cover	when removing item 4		
13	03-1405-52	Bolt	*A cordless impact driver can be used to remove or tighten the #4 retaining screw. #28 is an optional thin wrench to hold motor shaft.		
14	02-4985-01	Ice sweep, flaker (UF)			
15	02-4745-01	Ice sweep, nugget (UN)			
16	02-4760-01	Chute body			
17	02-4761-01	Chute insulation			
18	03-1405-40	Mounting bolt			
19	02-4961-01	Evaporator water inlet tube			

Model UF424 and UN324 Service Parts

Base Top and Air Cooled Condensing



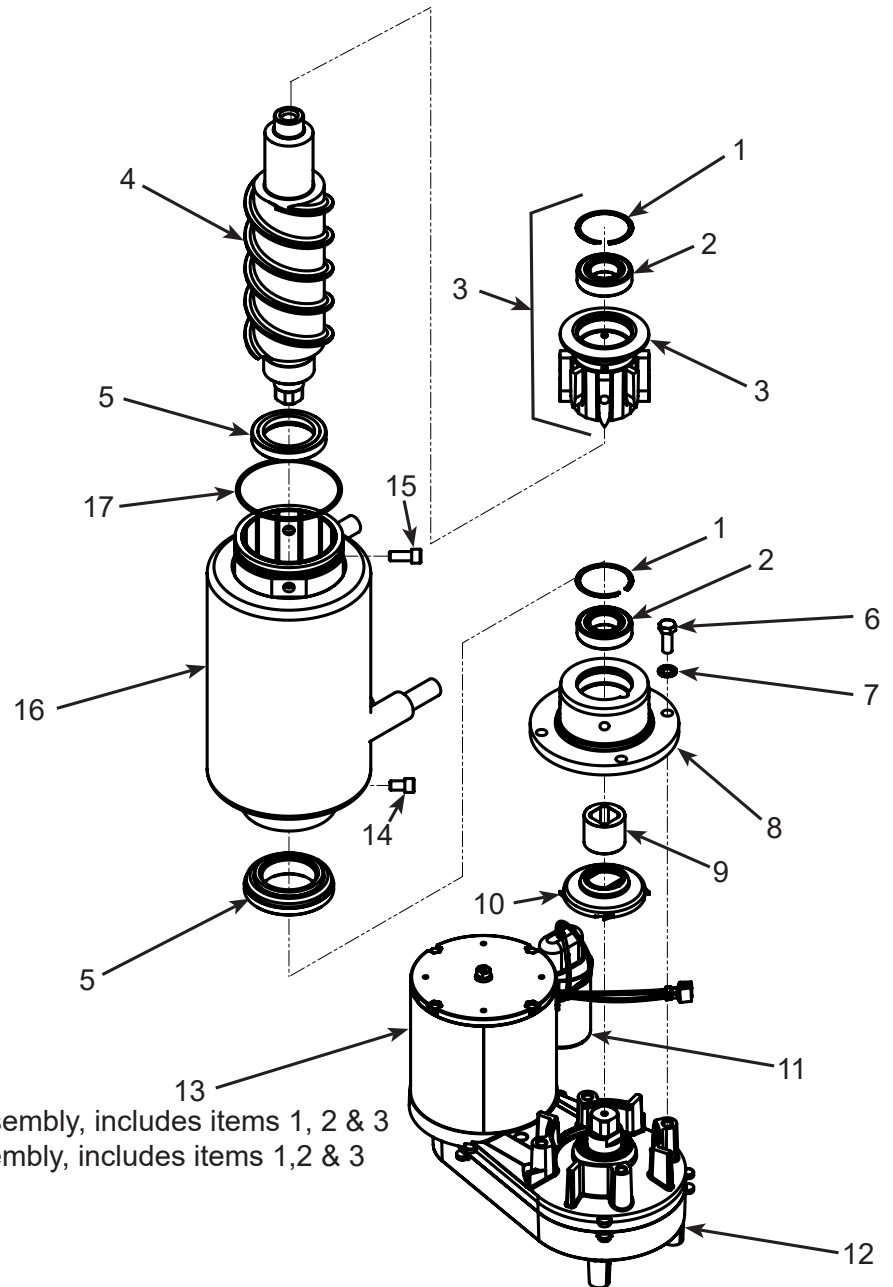
Item	Part Number	Description	Item	Part Number	Description
1	A40583-001	Base top	19	03-3943-02	Screw
2	03-3943-01	Screw	20	A40750-001	Air flow barrier
3	02-1875-25	Hole plug	21	12-1213-04	Snap bushing
4	03-1403-16	Screw	22	03-1645-01	Cap screw
5	03-0571-00	Screw	23	A40323-002	Motor bracket
6	03-1875-21	Hole plug	24	12-2989-01	Fan motor, 115 volt, 60 Hz
7	03-1404-12	Screw		12-2989-02	Fan motor, 230 volt, 50 Hz
8	12-1213-10	Snap bushing	25	18-8708-01	Fan blade
9	A40587-001	Utility panel	26	A40592-001	Fan shroud
10	A40586-001	Gear box support	27	19-0655-03	Shroud tape
11	A40582-001	Base pan	28	03-3963-02	Screw
12	A39550-002	Drain bracket	29	18-8942-01	Air cooled condenser
13	02-3692-01	Drain adapter			
14	16-0655-03	Gasket tape, each per foot			
15	12-0350-00	Strain relief			
16	03-3940-01	Plastic glide			
17	03-1531-08	Screw			
18	13-0609-00	Shroud tape, 15" req.			

September 2017

Page 6

Model UF424 and UN324 Service Parts

Auger, Water Seal, Gear Reducer, Bearings



Item	Part Number	Description
1	03-3953-01	Retaining ring
2	02-4843-23	Bearing
3	A40173-001	Nugget Extruder assembly, includes items 1, 2 & 3
	A40173-002	Flaker extruder assembly, includes items 1, 2 & 3
4	02-4840-21	Auger
5	02-0929-23	Water seal
6	03-1405-38	Cap screw
7	03-1417-13	Lockwasher
8	A40174-001	Adapter, includes items 1, 2 and 8
9	02-4838-01	Coupling
10	02-4786-01	Water shed
11	12-3083-24	Capacitor, 115 volt models
	12-3083-25	Capacitor, 50 Hz models
12	12-3083-21	Gear reducer complete, for 115 volt models
	12-3083-22	Gear reducer complete, for 50 Hz models
12a	12-3083-23	Gear reducer, no motor
13	12-3083-31	Auger drive motor, for 115 volt models
	12-3083-32	Auger drive motor, for 50 Hz models
14	03-1544-09	Socket hd cap screw, 1/2 inch long
15	03-1544-08	Socket hd cap screw, 3/4 inch long
16	02-4758-21	Evaporator
17	13-0617-52	O-ring

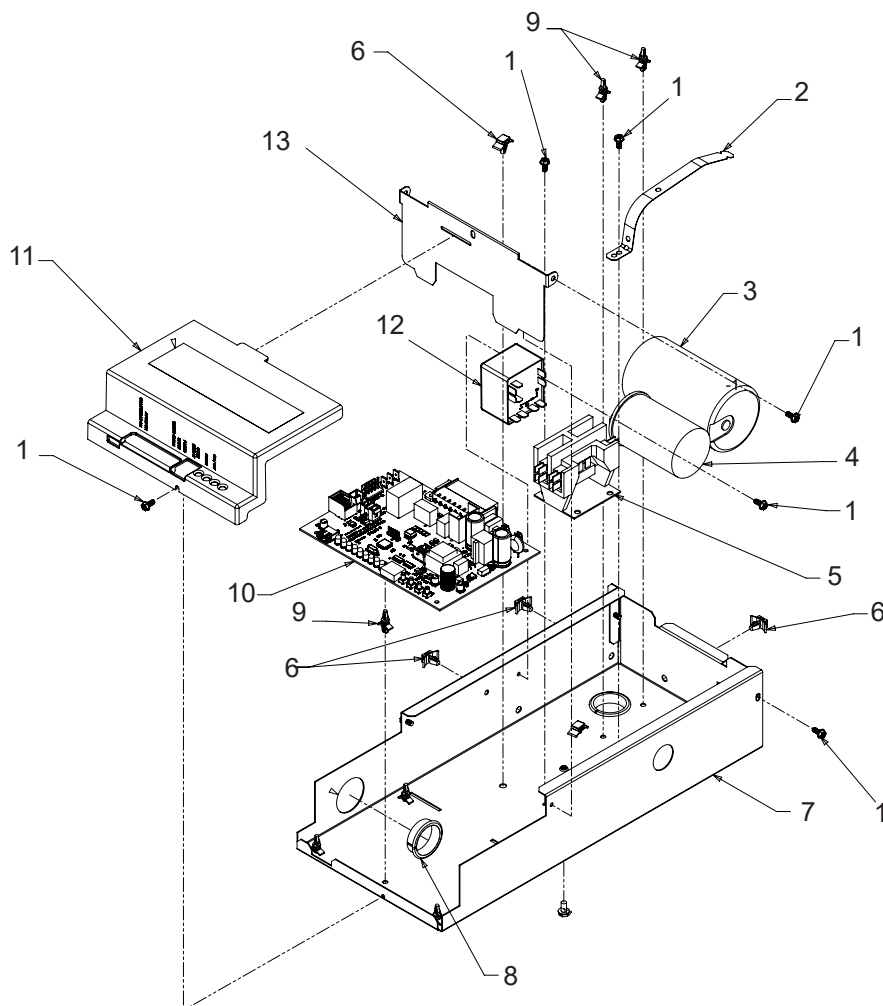
Note: Bearings and water seal should be replaced as a set. Do not substitute non-OEM bearings. Do not lubricate bearings. Bearings may be pushed out of their retainer.

Remove extruder first to remove auger. Attach ice sweep to lift auger. Auger motor note: Motor shipped attached to gear reducer cover. Cover not intended for replacement, used only for shipment. Remove motor from cover and discard cover.

12a ships with separate 11 oz oil charge.

Model UF424 and UN324 Service Parts

Control Box



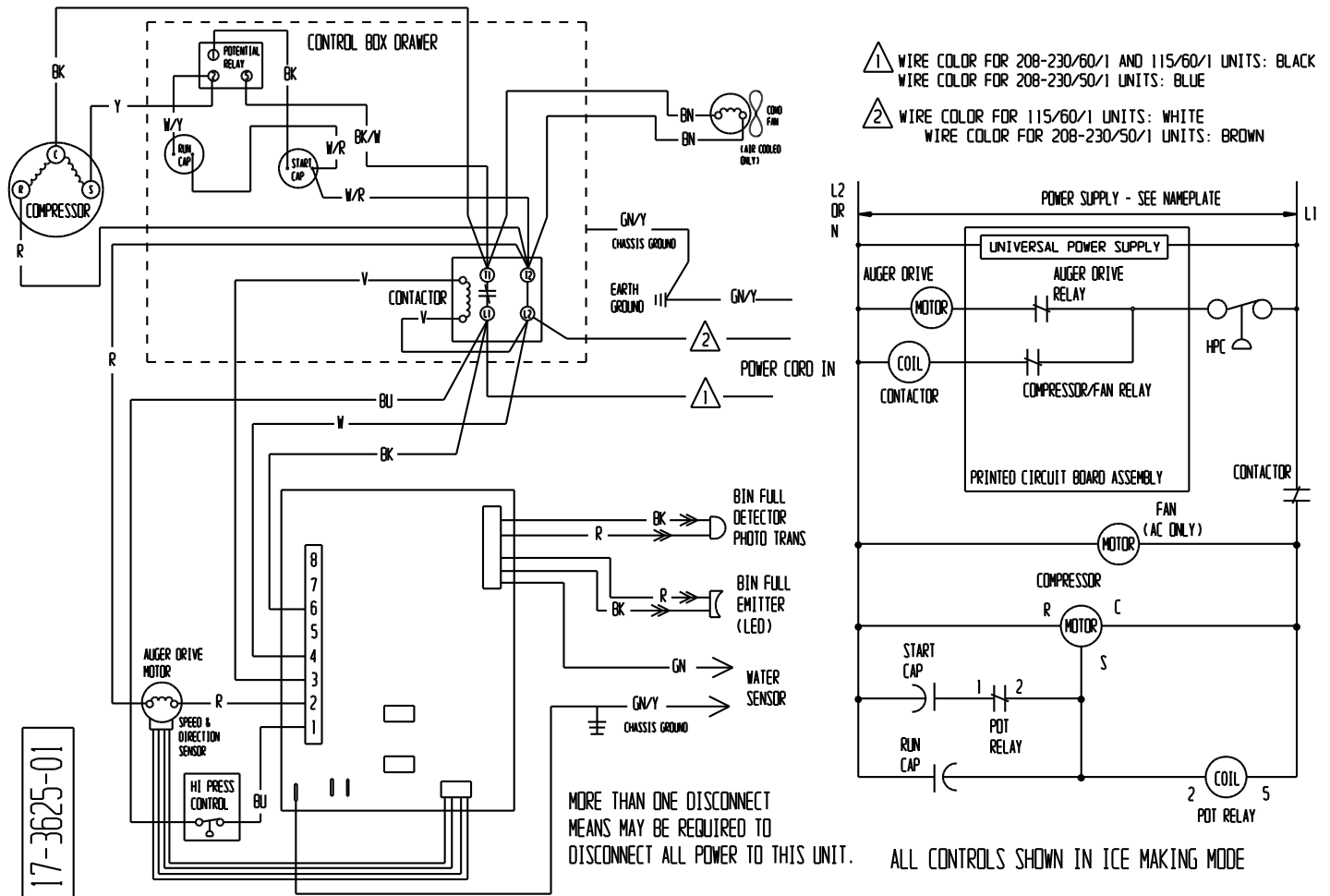
Item	Part Number	Description
1	03-3943-01	Screw
2	A37366-001	Strap
3	18-1901-42	Start capacitor, for 115/60
	18-1901-56	Start capacitor for 230/50
4	18-1902-69	Run capacitor for 115/60
	18-1902-72	Run capacitor for 230/50
5	12-2469-03	Contactor for 115/60
	12-2469-02	Contactor for 230/50
6	02-3112-01	Wire mount
7	A40612-001	Control box, box only
8	12-1213-20	Snap bushing
9	03-1727-02	Stand off
10	11-0612-52	Controller
11	02-4830-02	Cover
12	18-1903-73	Potential relay, for 115/60
	18-1903-74	Potential relay, for 230/50
13	A40618-001	Barrier

Wire Harnesses (not illustrated)

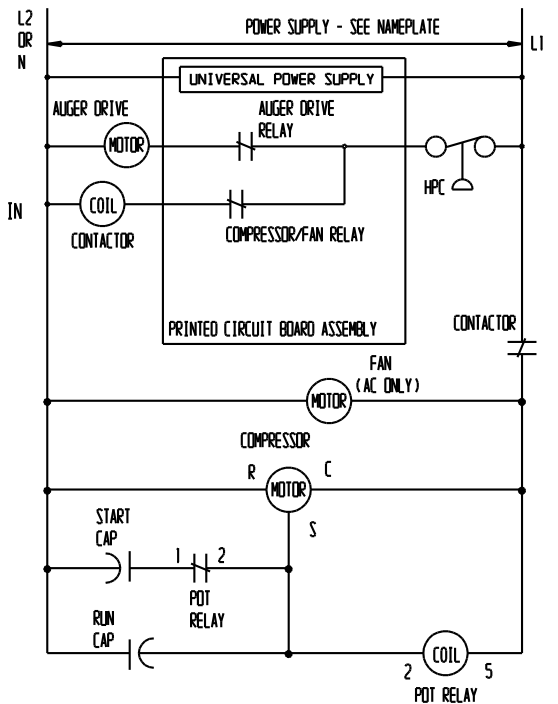
12-1638-30	Power cord, 115 volt, 60 Hz
12-1638-31	Power cord, 230 volt, 50 Hz
12-3127-01	Fan harness
12-3089-02	Rotation sensor with harness
12-3129-01	Hi voltage harness
12-3128-02	Bin and water sensor harness

Model UF424 and UN324 Service Parts

Wiring Diagram



- 1 WIRE COLOR FOR 208-230/60/1 AND 115/60/1 UNITS: BLACK
WIRE COLOR FOR 208-230/50/1 UNITS: BLUE
- 2 WIRE COLOR FOR 115/60/1 UNITS: WHITE
WIRE COLOR FOR 208-230/50/1 UNITS: BROWN



MORE THAN ONE DISCONNECT
MEANS MAY BE REQUIRED TO
DISCONNECT ALL POWER TO THIS UNIT.

ALL CONTROLS SHOWN IN ICE MAKING MODE